

German Medical Association



Prepared : Rakhimzyanova A.S.

Plan



- About the German Medical Association
- The role of the German Medical Association
- Organizational structure
- List of references



About the German Medical Association



- The German Medical Association (Bundesärztekammer) is the central organisation in the system of medical self-administration in Germany.
- As the joint association of the State Chambers of Physicians (*Landesärztekammer*), it represents the interests of 470,422 physicians (status: 31/12/2013) in matters relating to professional policy, and plays an active role in opinion-forming processes with regard to health and social policy and in legislative procedures.

It founded in 1947 and based
in Berlin



Purpose



- The purpose of the GMA is to protect, promote and maintain the health and safety of the patient and the community by ensuring proper standards in the practice of medicine.
- It regulates :
 - ethical and professional obligations of doctors,
 - postgraduate training,
 - continuous medical education and professional development,
 - quality assurance and quality promotion in healthcare.

Organizational structure

- The headquarters of the German Medical Association are located in Berlin.
- The main structures of the organisation include the Office of the Secretary General, the Department for International Affairs, the Press Office and seven additional departments, each with a specific focus on certain aspects of healthcare or the medical profession.



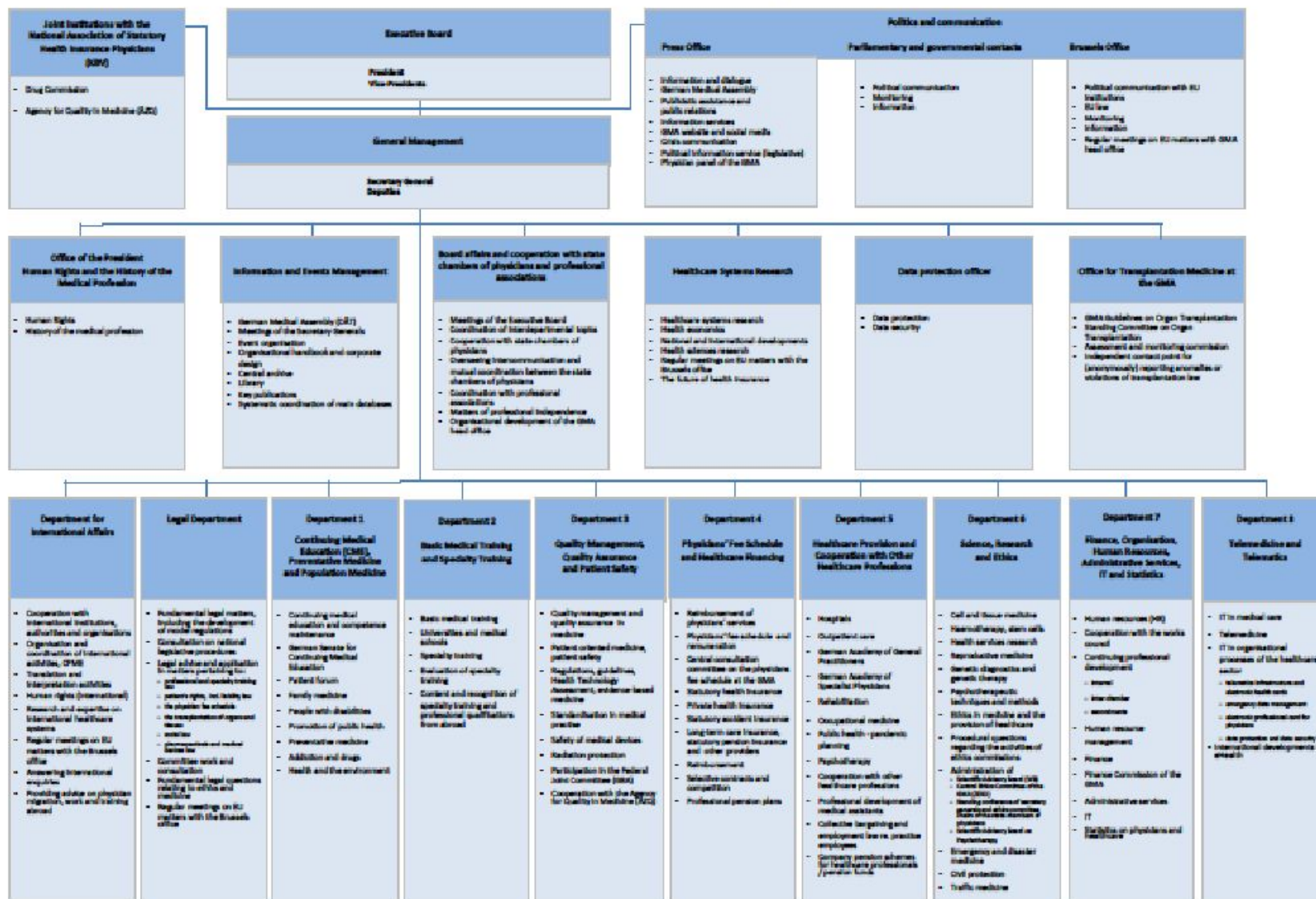
Continue



- In addition to this, separate bodies such as the Scientific Advisory Board and the Drug Commission have their own statutes and rules of procedure. Their members are elected by the Executive Board of the German Medical Association or the German Medical Assembly.



Organisational Chart of the German Medical Association Federation of the German Chambers of Physicians



List of references



- <https://en.wikipedia.org/>
- <http://www.bundesaerztekammer.de/>



Thank you for your
attention !