

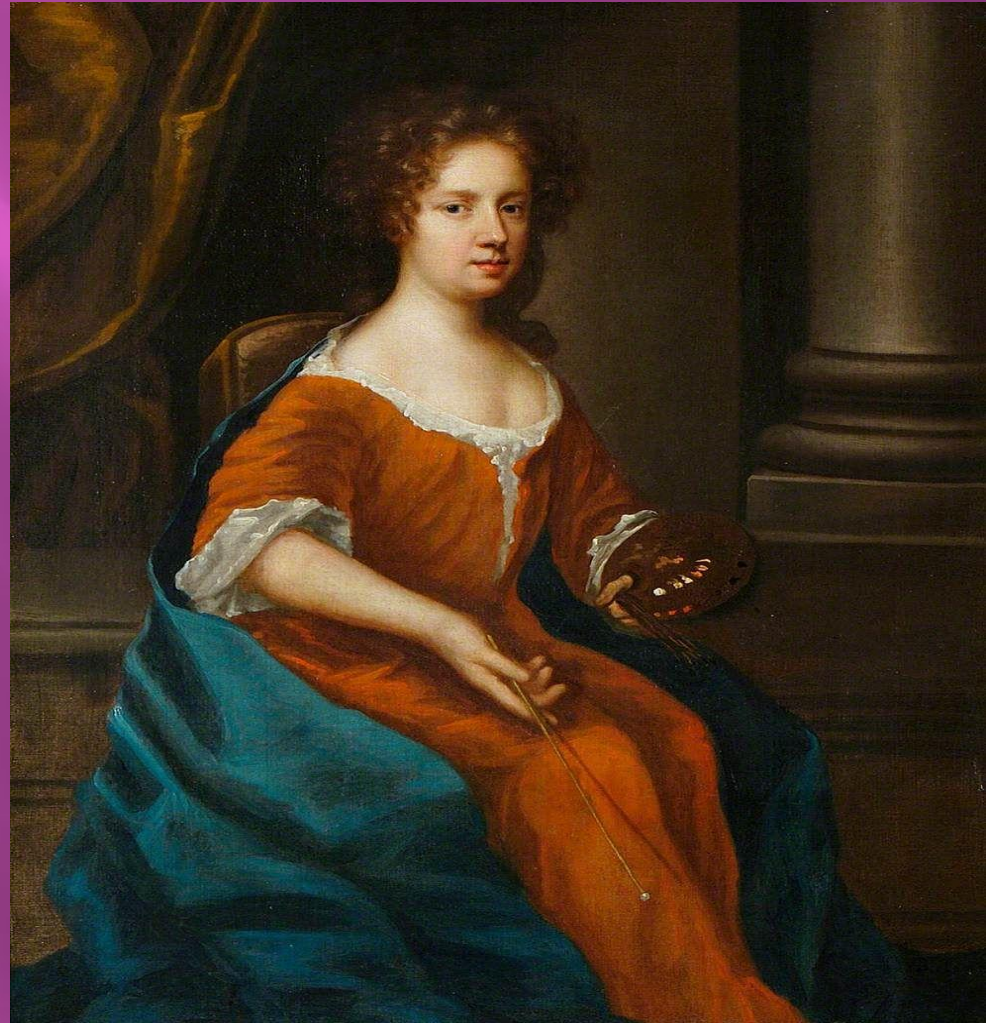
Mary Beale (late March 1633 – 8 October 1699) was one of the most successful professional female Baroque-era portrait painters of the late 17th century due to her perseverance of her business.

Mary
Beale



In 1650-1660-ies Mary Beale painted to order in a home Studio, which was first in the area of Covent garden, and then fleet street.

She was highly appreciated by contemporaries, but despite this, after the death of the artist, her paintings quickly went out of fashion and were forgotten





Thomas Tenison
(engraving from a
portrait by Mary Beale,
national portrait
gallery, London)

Frances Dutches of
Newcastle



Mary Beale.
Portrait of Frans
Pierpont,
Countess of
Newcastle



Mary Beale.
Portrait Of
Mary Wiesel,
Endwell