

| | |
|----------------------------|--|
| Model | SMD-80D doner box machine |
| Speed | 70-80 pcs/min |
| Cup size | Top Diameter:175 mm(max) Bottom Diameter: 95 mm(max) Height: 130 mm(max) |
| Raw material | 135-450 GRAM |
| Configuration | ULTRASONIC & HOT AIR SYSTEM |
| Output | 380V/220V,60HZ/50HZ, 14KW |
| Air compressor | 0.4 M ³ /Min 0.5MPA |
| Net weight | 3.4 TONS |
| Dimension of machine | 2500×1800 ×1700 MM |
| Dimension of cup collector | 900 ×900 ×1760 MM |

Paper Cup Sample

NOODLE BOXES ROUND BASE 圓底面条盒系列



Quotation

Remarks:

1. Price term: FOB ShangHai Port, China

2. Payment term: T/T (30% as deposit, 70% balance before delivery) or L/C

3. Delivery term: 30-35 working days after received deposit and confirmed cup size

4. After sale service:

- The CD and service& support guide booklet will be sent with machine to guide the installation process works, adjust the whole machine,production,avoid or solve the problem which the buyer will face.

- We will adjust the machine well for one week before the delivery, ensure the machine has the perfect performance!

- We supply the free training of buyer, the training won't stop until the buyer control the whole lesson. The cost of air ticket, boarding and lodging should provided by buyer.

5. Warranty

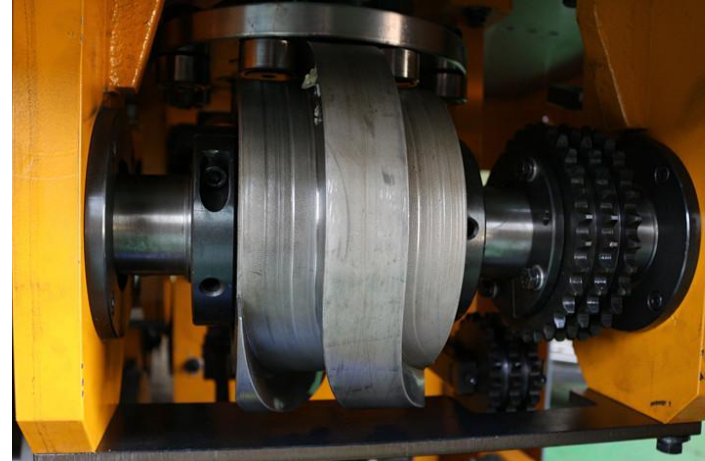
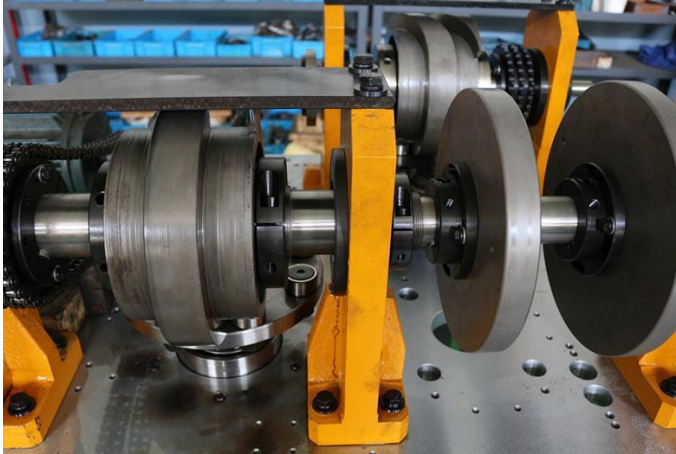
- one year for electronic parts from the shipment date

- three years for mechanical parts from the shipment date

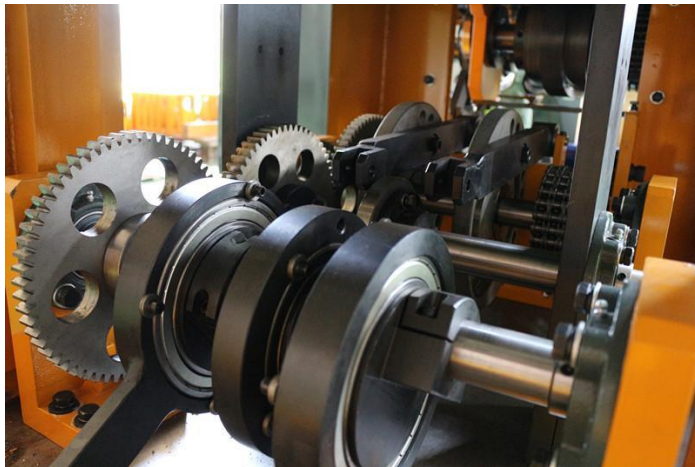
Machine detail

Open cylindrical cam: Our factory is the first one using two cam systems, this design more costly, but can let the top curling and bottom knurling more accuracy, stable and low noise.

Cam adopts high strength Japan-SKD11 with quenching treatment, resistant to wear. Before set up on the machine, our factory will test running one week, to ensure each bearing at the suitable station.



Gear drive: This system ensure the machine runs with high speed with low noise, smoothly running and high precision. Instead of chain drive.



Machine detail

Hot air system and protect system: 2 set of hot air systems can decrease the rate of leakage. Our factory using the whole set of Leister hot air system with protection system. And our system sets up on the fixed plate, do not moving during production. Almost impossible to damage. Also the only one have the protect system that hot parts will go down, keep the distance with paper cup and cup mould when the machine stop.



Bottom rolling: special design for bowl cup, the rolling of bottom will be more smoothly.



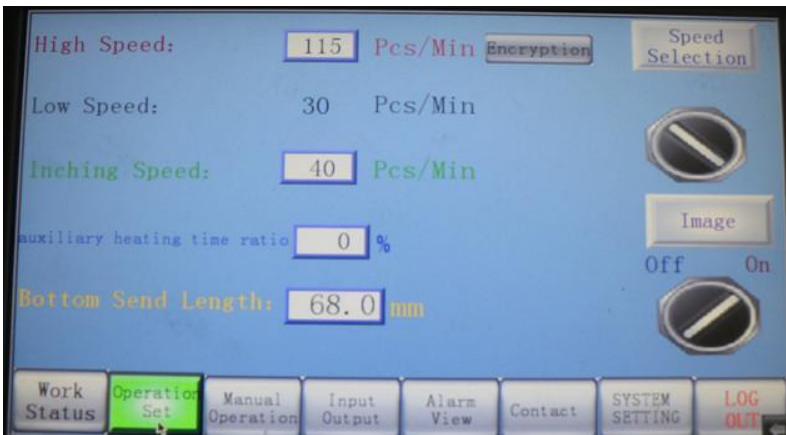
Machine detail

Oil lubrication system: Adopts forced lubrication system to ensure main driving oil supply regularly and reduce friction and prolong the machine life. The oil circuit adds a clear the oil and filtering system

to clean the oil automaticly. Our factory is the first one to using double layer plate to avoid the scraps of pa

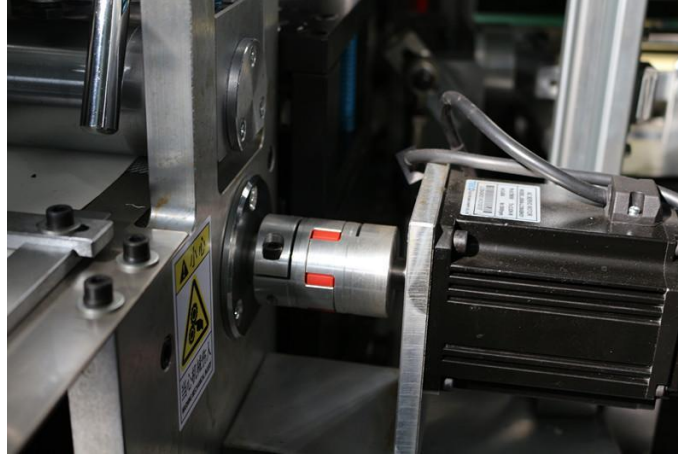


PLC control system: controlled by simple and efficient PLC system.



Machine detail

Servo motor: Service for bottom paper feeding. The feature of runs more stable and accuracy, reduce the waste of bottom paper. Servo motor is made in Japan by MITSUBISHI.



Bottom paper cutted mould: Unique design for bottom paper cutted as a piece of paper, easy to pack.



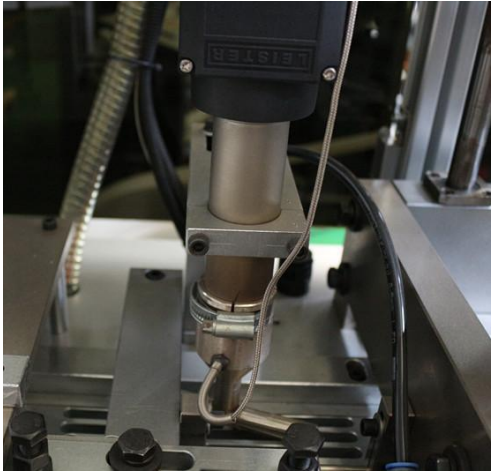
Our factory set up length>>>>>>>>>>>>Easy to package as tube

Too long

Too short

Machine detail

Paper fan side seal: Hot air system for preheating, using ultrasonic for side seal. Ensure no water leakage during high speed running. Especially for double PE coated paper fan, have two side hot air system. Ultrasonic is made in Taiwan by EVEN GREEN.



Photoelectric detection: each production step have camera. Any step have problem will be showed on PLC. Such as the stock of paper fan less than standard, will be alarming. If do not add paper fan, will finish paper fan in machine firstly, then, stop the machine automatically.



Machine detail

Air controller: our factory also the one have air controller, and the only one set up two air blowers

on the m

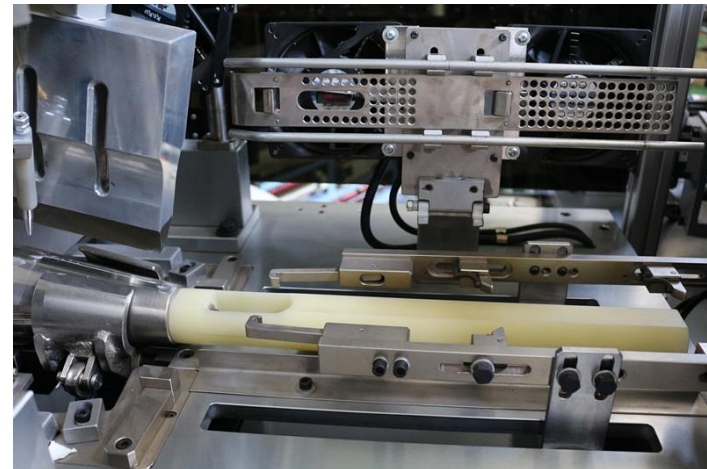


ed an



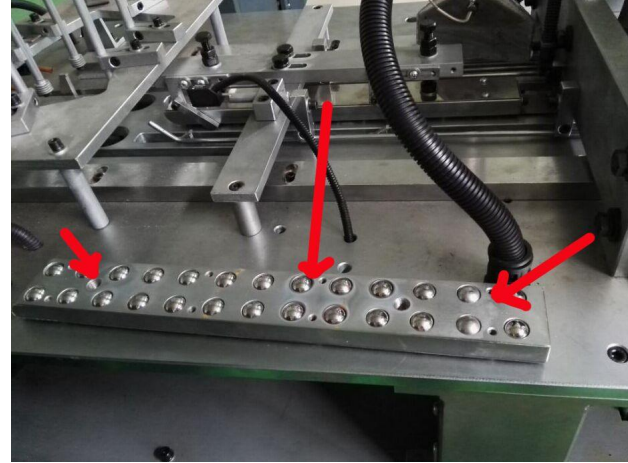
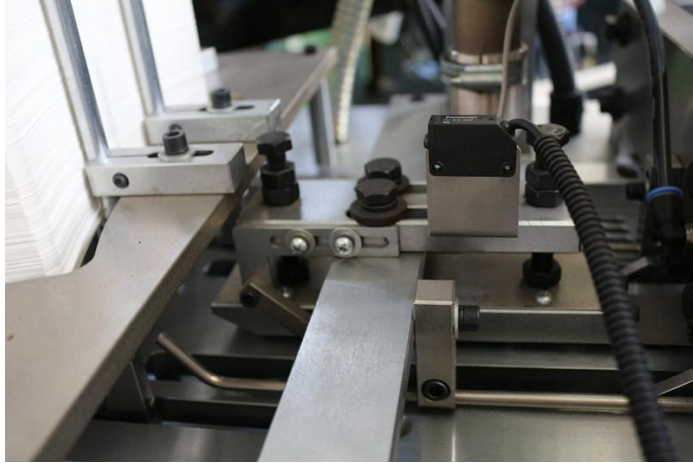
ction.

Rubber tube: set up after the side sealing, when the cups finished cup side sealing, can fix the cup position. And the fans are foldable, when you change the paper fan thickness and adjustment, it is easy to take the cups out.

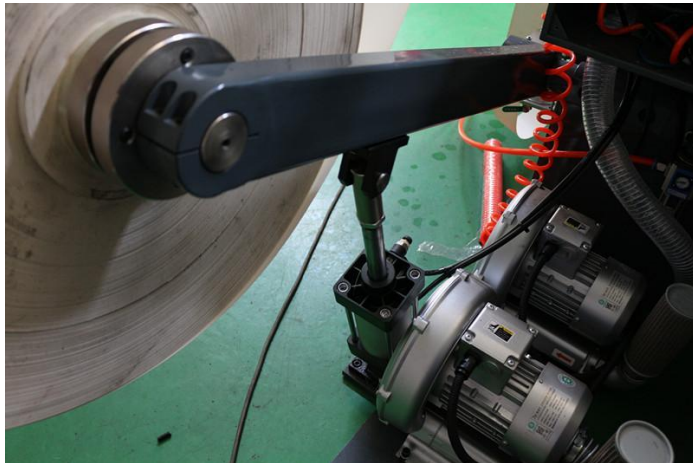


Machine detail

Paper fan delivery: our factory special design for paper fan delivery. A lot of small ball at the bottom, instead of chain or block, can efficient avoid paper fan jam.



Bottom paper roller holder: add the air cylinder at this parts, have control panel. When worker change the roller, just need to adjustment the height of holder, do not need to move the roller up. As a woman, also easy to change the roller.

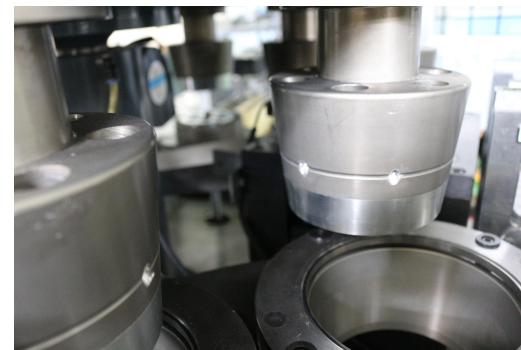
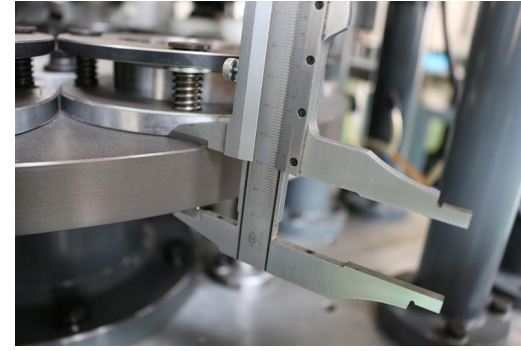


Machine detail

Safe door: Set up safe door and security button. Keep safe. Two type of design can be selected.



Material: Our machine material all very strong, all use the best material.



Electrical Parts

| Model | STD-80D | Country |
|------------------------------------|----------------|----------------|
| PLC /Transducer/Servo motor | MITSUBISHI | Japan |
| Inspection system/Photo electrical | PANASONIC | Japan |
| Hot air system | LEISTER | Switzerland |
| Contactor/Button | SHLINORDE | France |
| Relay | IDEC | Japan |
| Temperature controller | OMRON | Japan |
| Encoder | KOYO | Japan |
| Needle bearing | IKO | Japan |
| Ultrasonic | EVENGREEN | Taiwan |
| Touch panel | WEINVIEW | Taiwan |
| Pneumatic element | AIRTAC | Taiwan |
| Switching power supply | MEAN WELL | Taiwan |
| Oil pump | HYDROMAX | Taiwan |