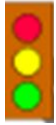
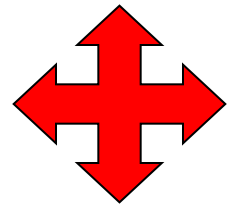
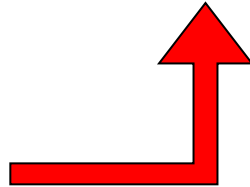
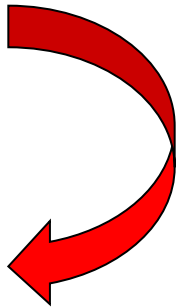


Asking for and giving directions

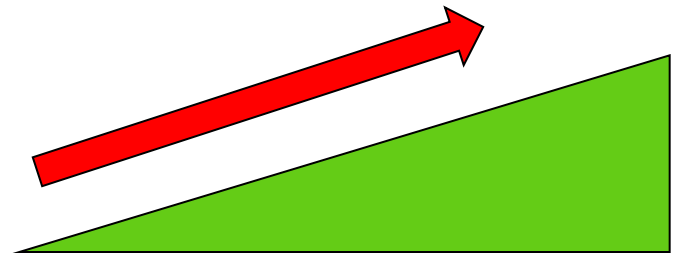
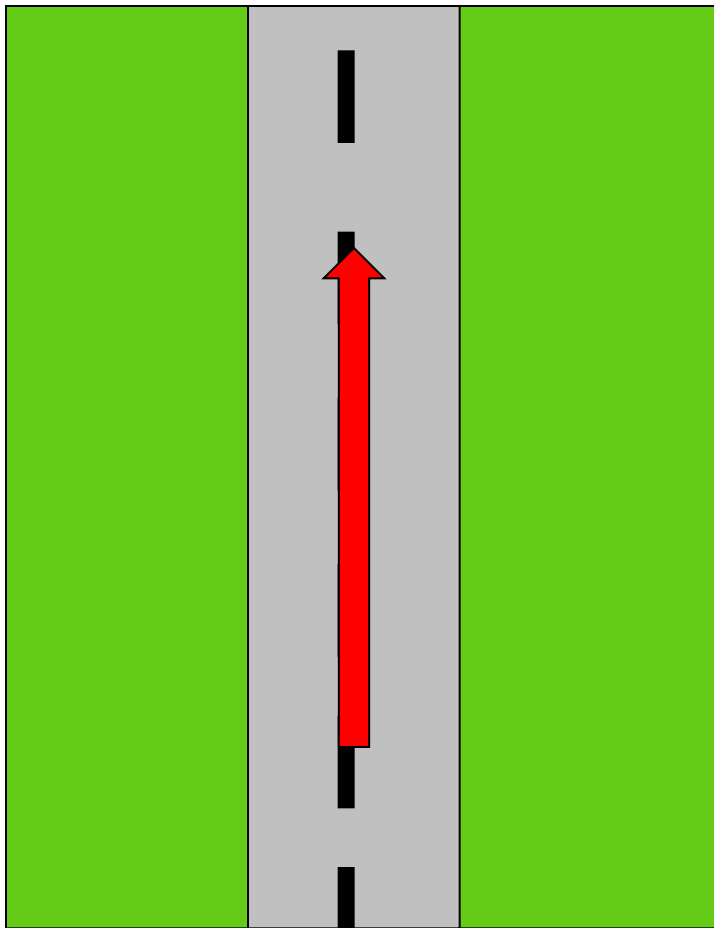


How do I get to....?

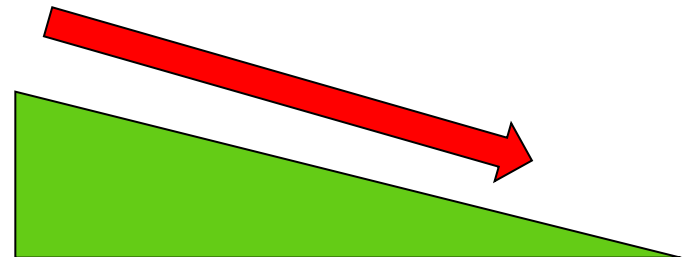
Ho do I go to ...?



Go along
Go on / ahead
Go straight on } the street



Go up the street

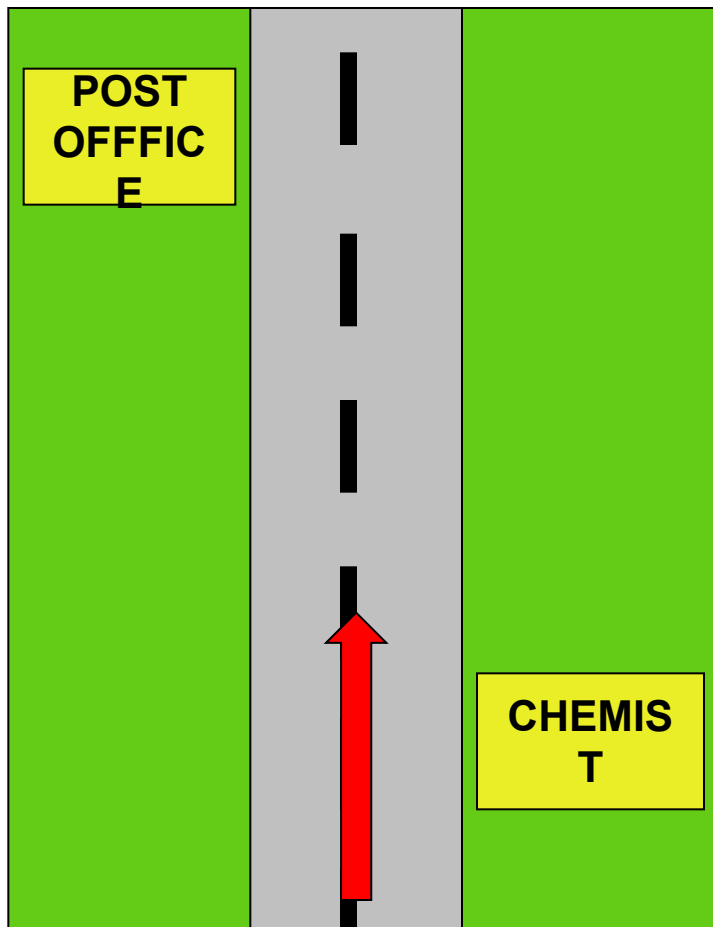


Go down the street

Go past

Pass by

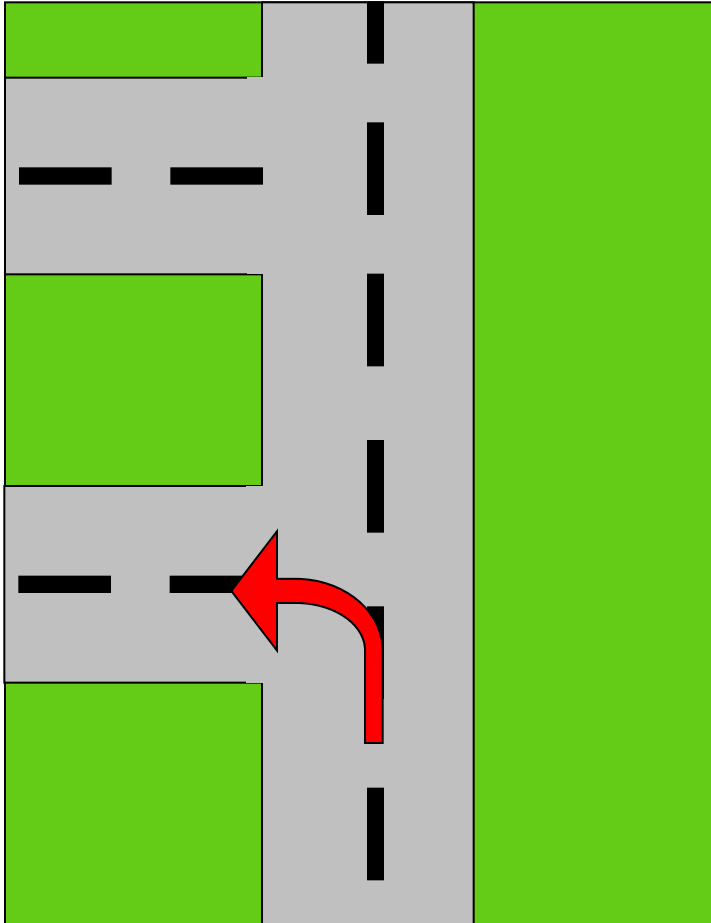
the Chemist



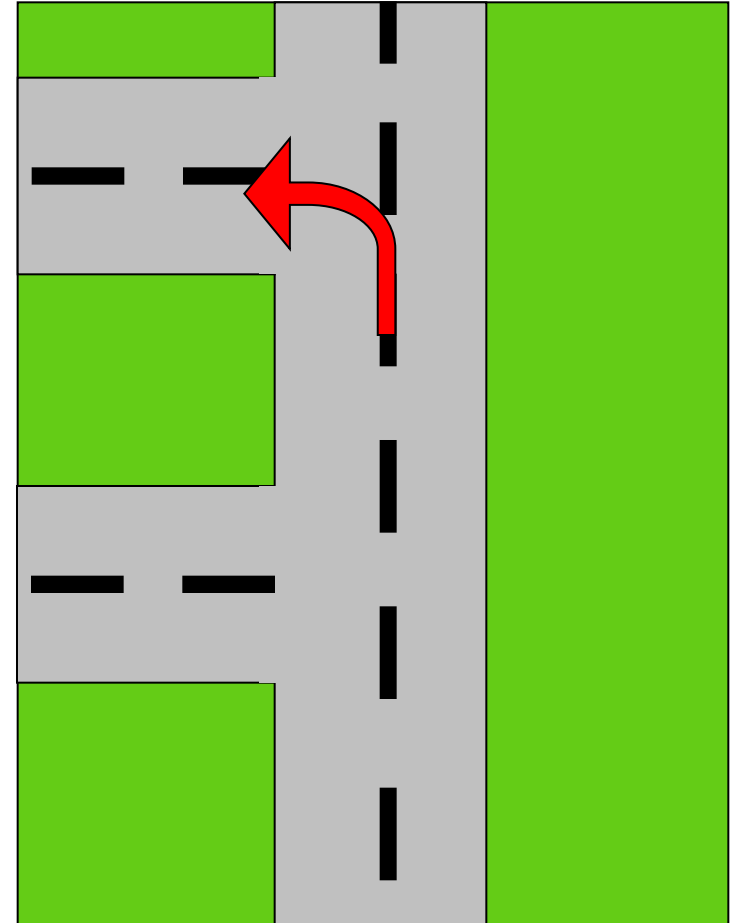
The Chemist is on
the/your right

The Post Office is on
the/your left

Turn Left

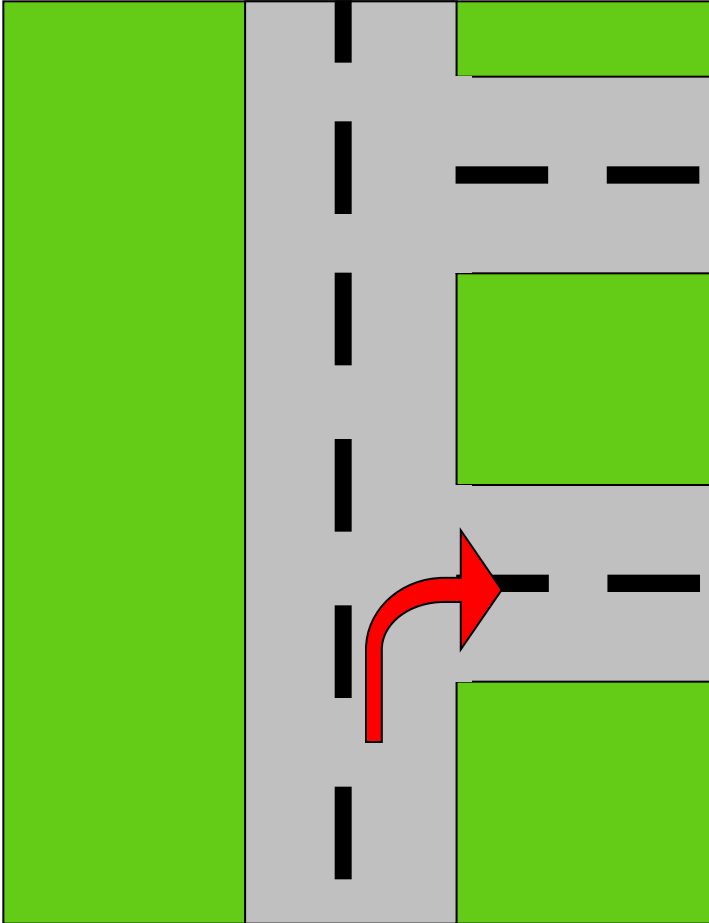


Take the first turning on the left

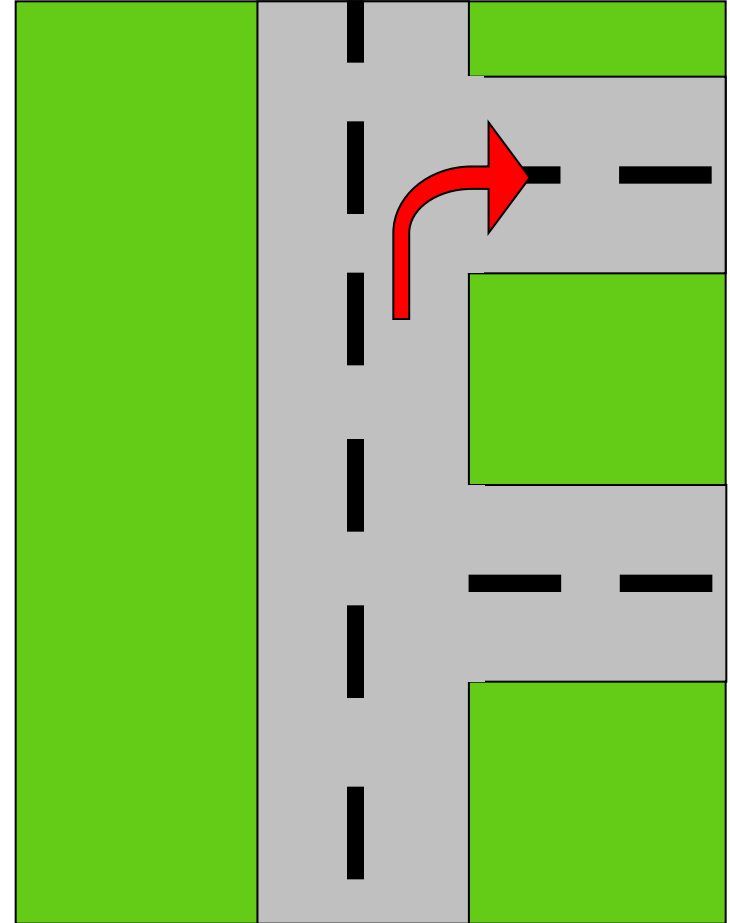


Take the second turning on the left

Turn Right

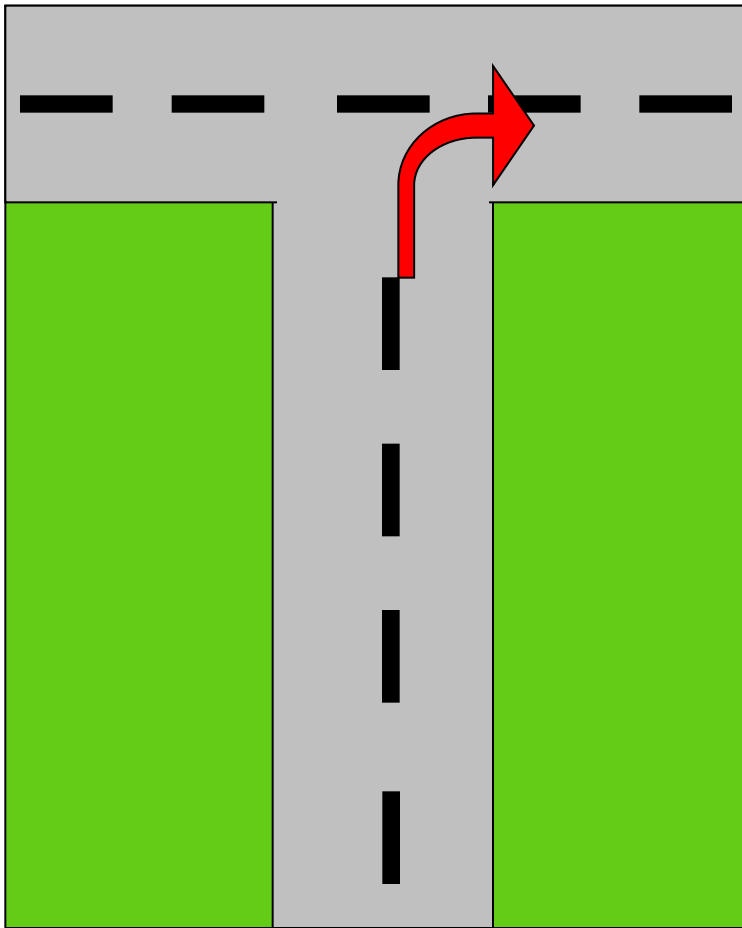


Take the first
turning on the right

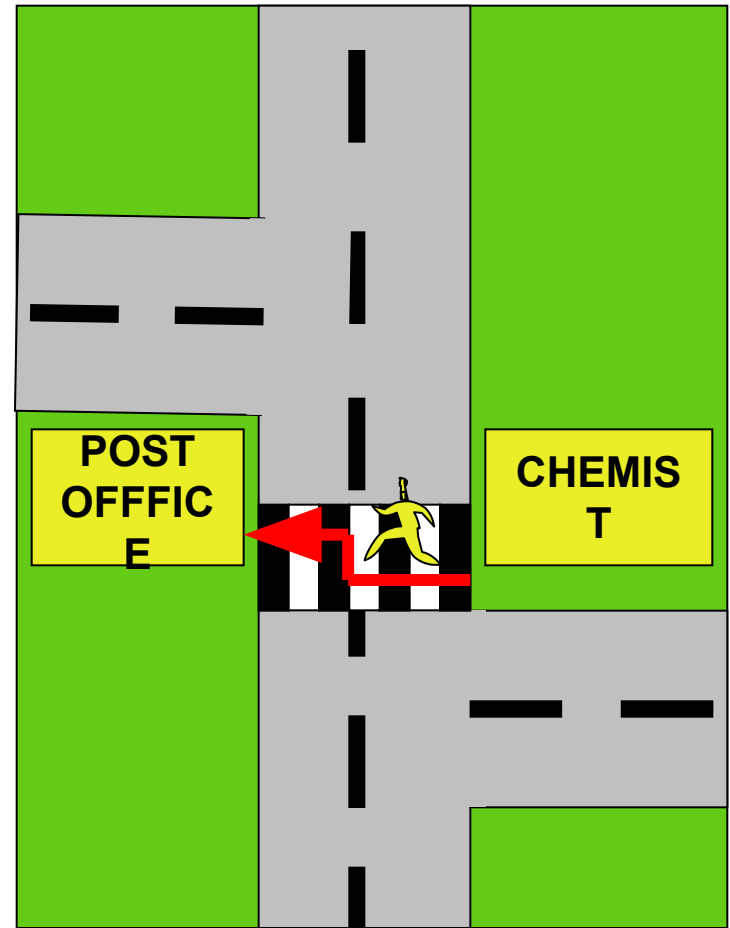


Take the second
turning on the right

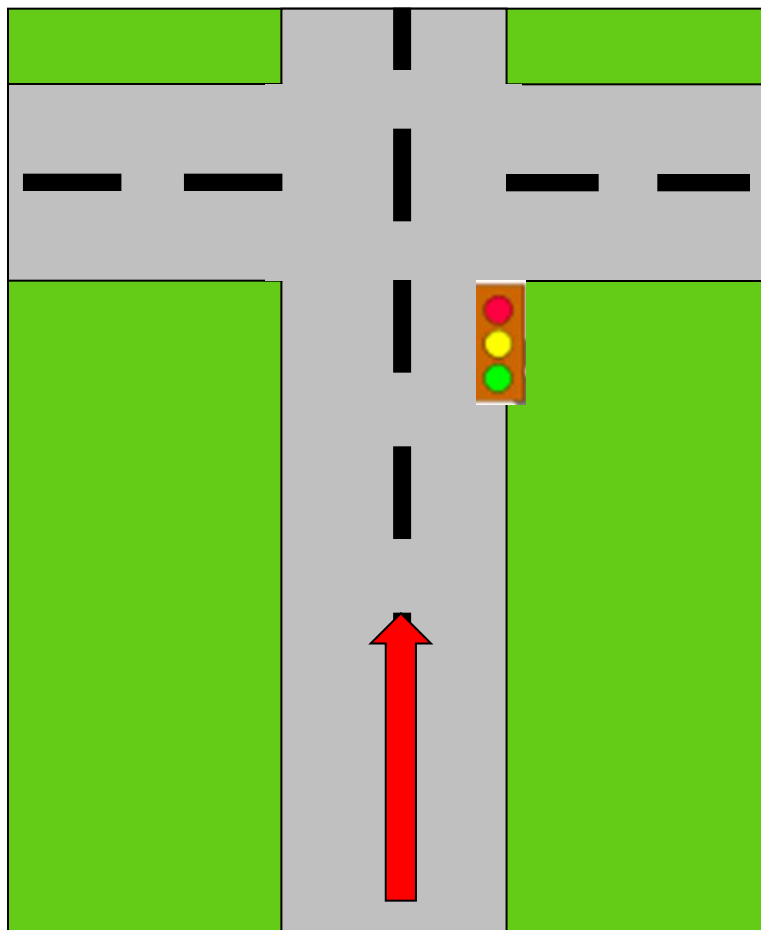
**Turn Right at
the end** of the street



Cross the street

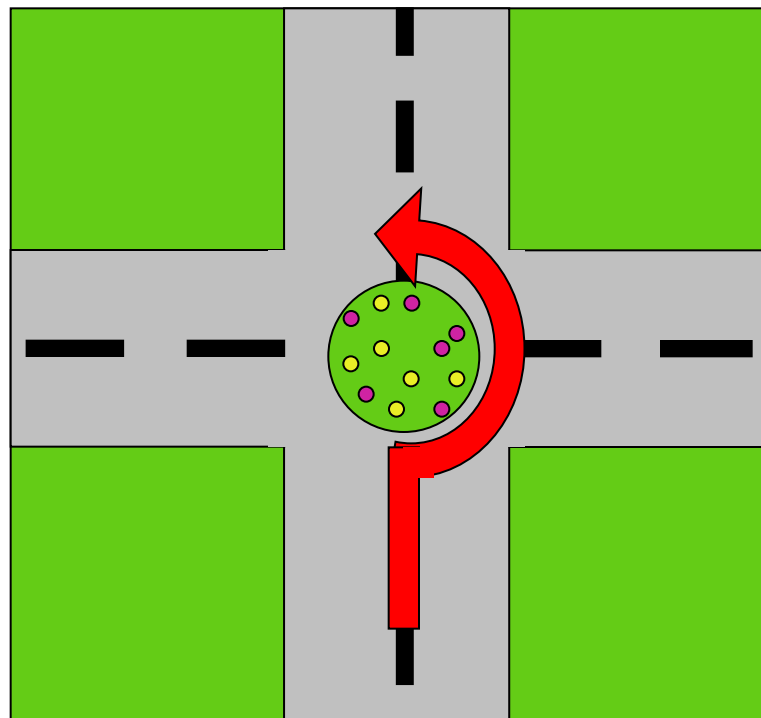


Go to the Traffic Lights



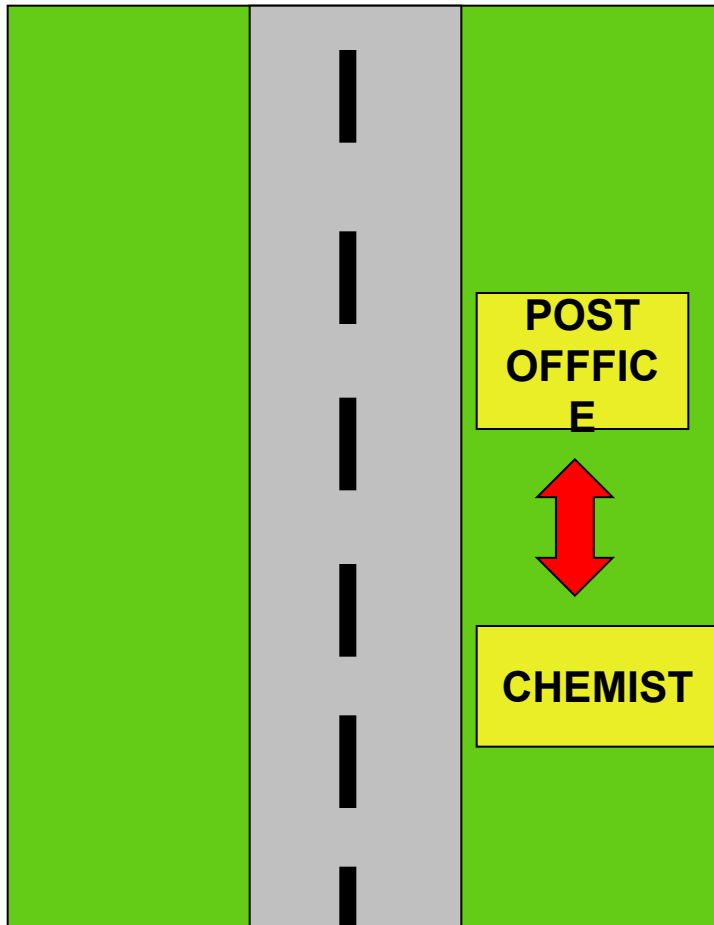
Go straight until you
come to the *traffic lights*

Roundabout



Go straight until you
come to a *roundabout*
and turn left / take the
third exit

The Chemist is
next to
the Post Office



The Post Office is
opposite
the Chemist

