

# ОТКРЫТИЕ СУШИЛЬНОЙ МАШИНЫ НА МОНДИ СЛПК

ВЫПОЛНИЛ СТУДЕНТ ЦБ-31  
ГИРУЕШЕВ ЕВГЕНИЙ

## **content:**

1. Opening
2. Dryer
3. cellulose Brand
4. Exterior features
  
5. scheme
6. Plans
7. Workplaces
8. Safety and qualification
9. About Mondi

- "Mondi Syktyvkar" The new drying machine worth 30 million euros officially opened on November 19 at the AO.



# Dryer Mondri



- ▣ It will allow the mill to produce bleached softwood market pulp a European quality «KOMICELL» brand. The production capacity of the machine is more than one hundred thousand tons of pulp per year.

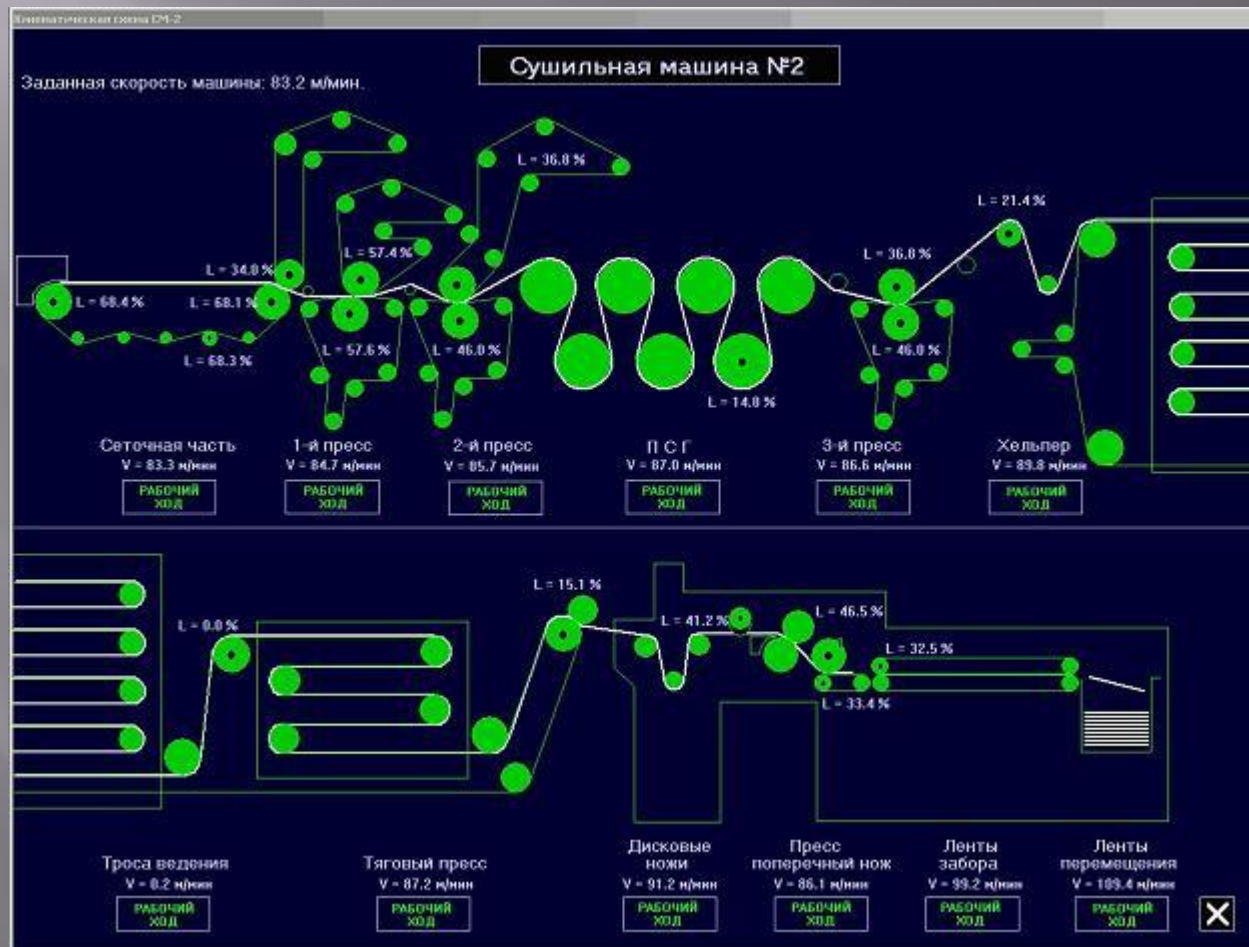




The dryer is a complex technological line of maximum capacity of 250 tons per day. It comprises a twin wire dewatering filter belt type dryer section for drying the web on the "air cushion" and the line forming and packing bales of cellulose.



# scheme



- ▣ In 2016 on the drying line is planned to produce 90 thousand tons of bleached softwood market pulp, certified according to FSC standards. She will be in demand by domestic and foreign enterprises for the production of sanitary, newsprint and packaging paper.





The new  
dryer  
"Mondi"  
provides  
jobs for 80  
people





The new dryer has the most modern facilities that meet all safety parameters requiring skilled workers

- ▣ JSC "Mondi Syktyvkar" is a division of Mondi Uncoated Fine Paper (uncoated fine paper Mondi Group). Syktyvkar Mill specializes in producing office and offset papers, also produces newsprint, cardboard for flat layers of corrugated cardboard "top-liner". The most famous brand of the company - office paper, "The Snow Maiden".



Thank you for  
attention 😊