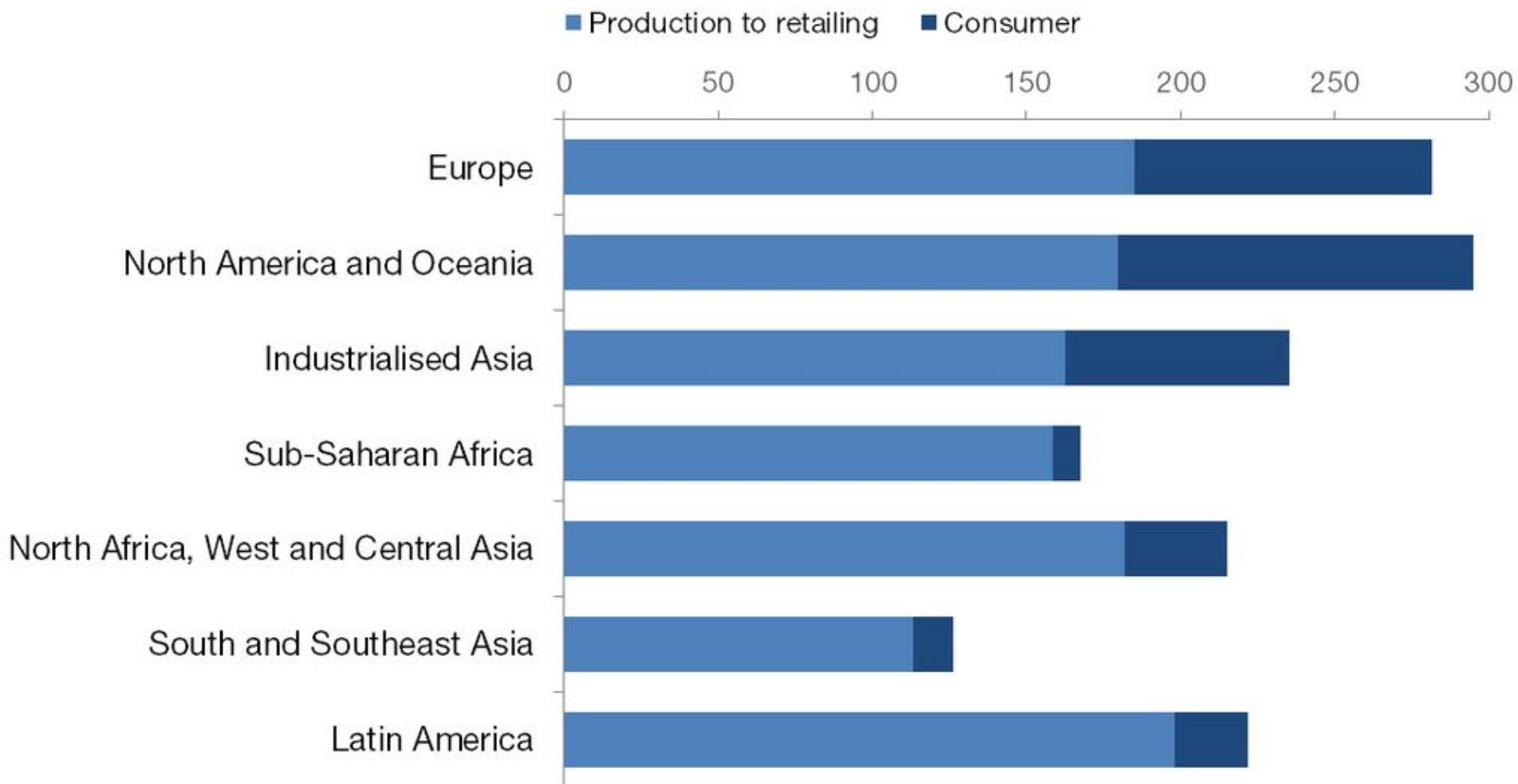


A conceptual image featuring a transparent globe held by two black silhouettes of hands. Inside the globe is a lush green tree. The background is a bright blue sky with a sun or moon creating a lens flare effect. The text "Global problems" is centered over the globe in a white, sans-serif font.

Global problems

# Which regions waste the most food?

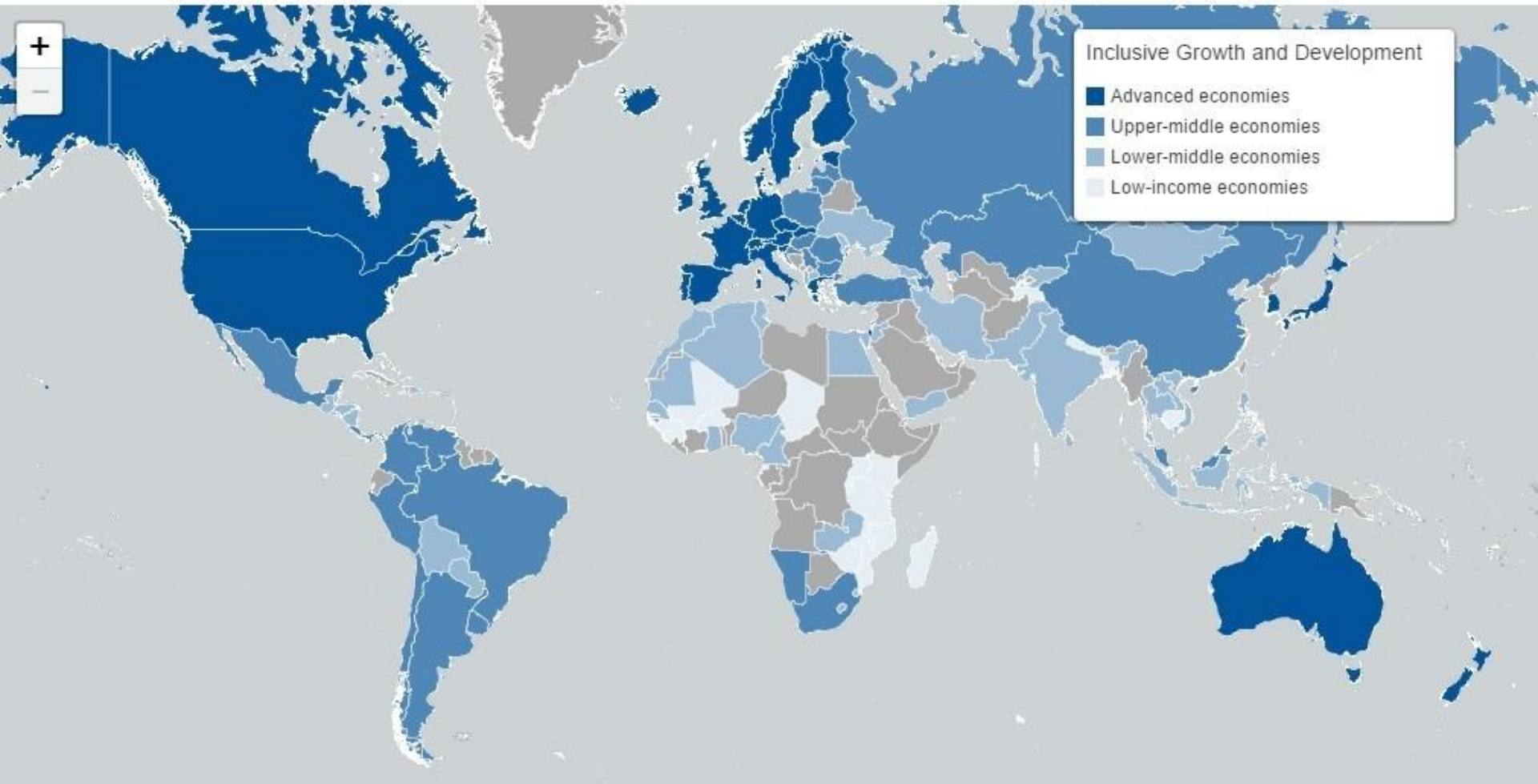
Per capita food losses and waste, kg/year



Source: The Food and Agriculture Organization of the United Nations (FAO)

## The Inclusive Growth and Development Report 2015

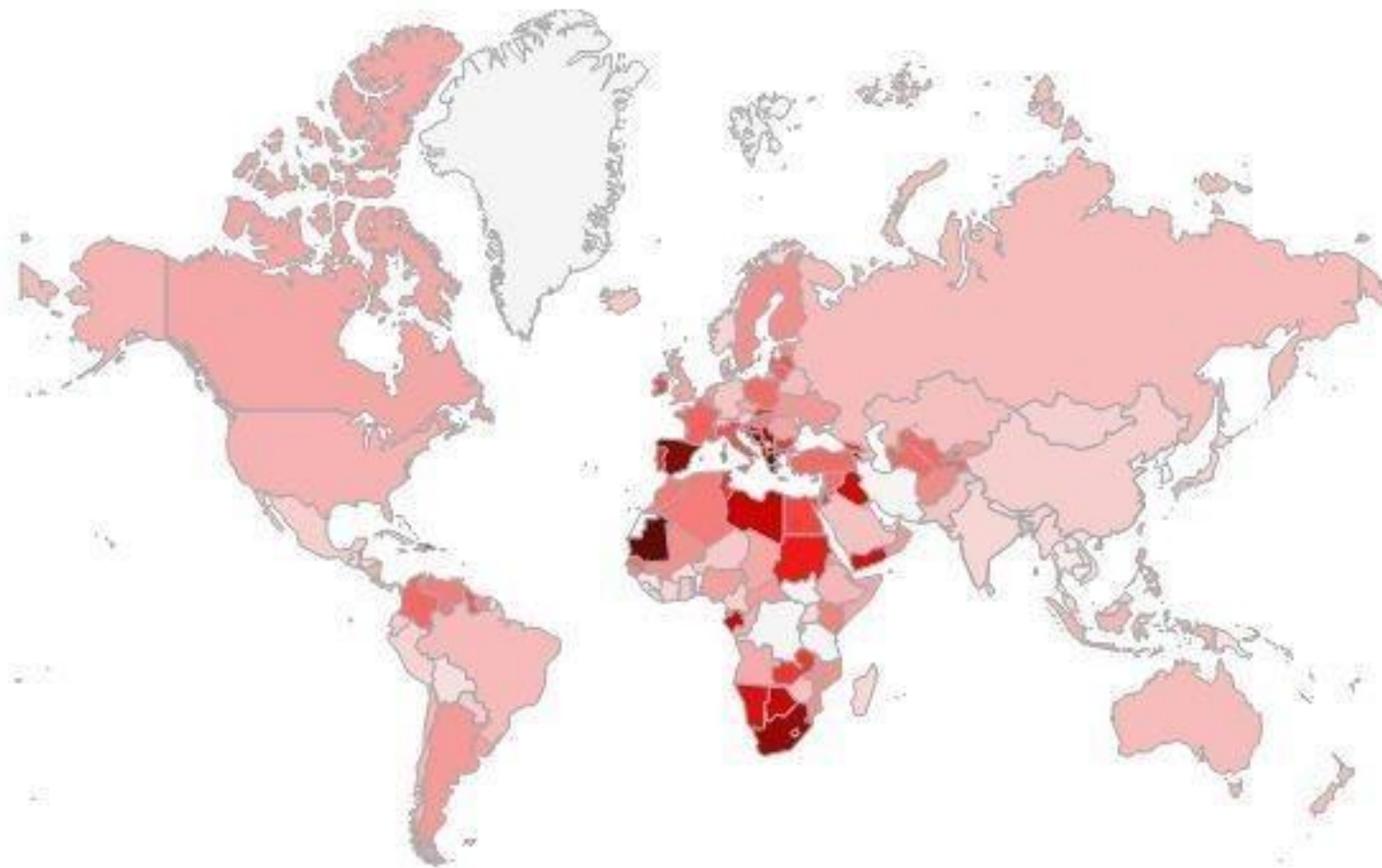
The Inclusive Growth and Development Report 2015 presents a framework and a corresponding set of indicators in seven principal policy domains (pillars) and fifteen sub-domains (sub-pillars) for 112 countries.





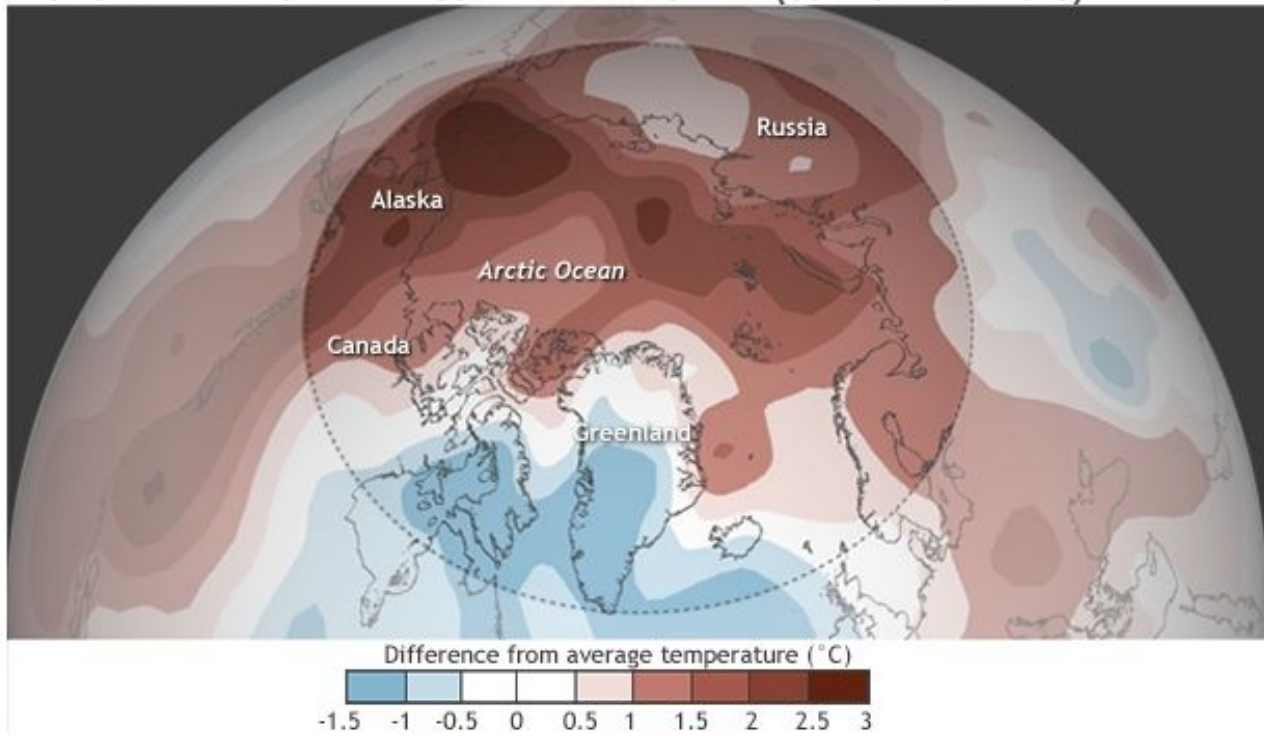
# Unemployment rate per country (%) \*

Year  ▼

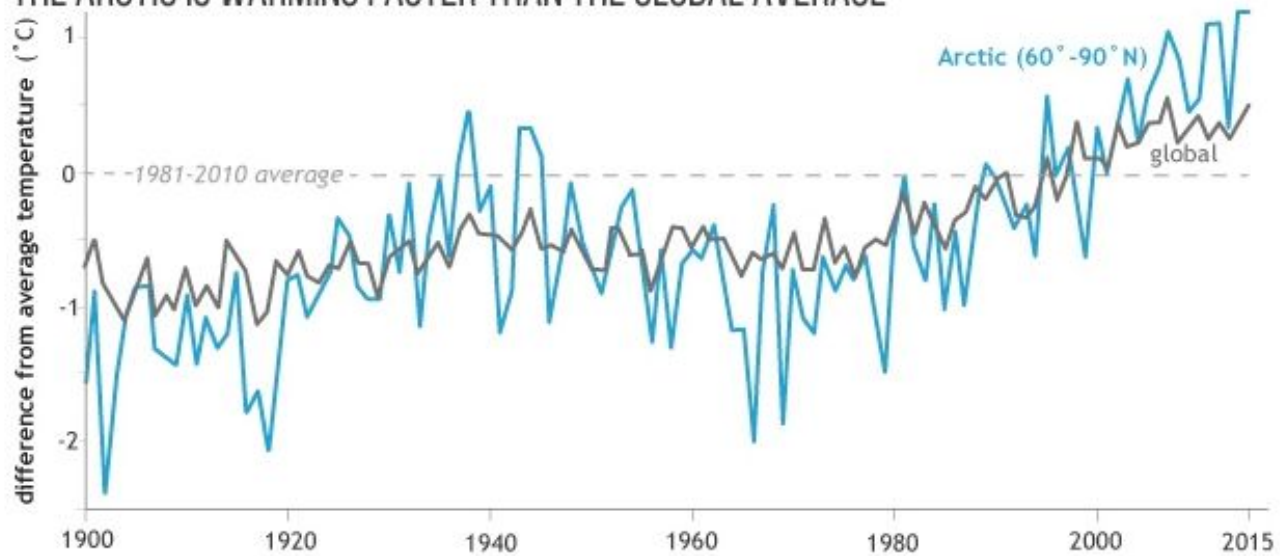


0.46  30.82

# ARCTIC LAND AREAS WERE RECORD WARM THIS YEAR (OCT 2014-SEP 2015)

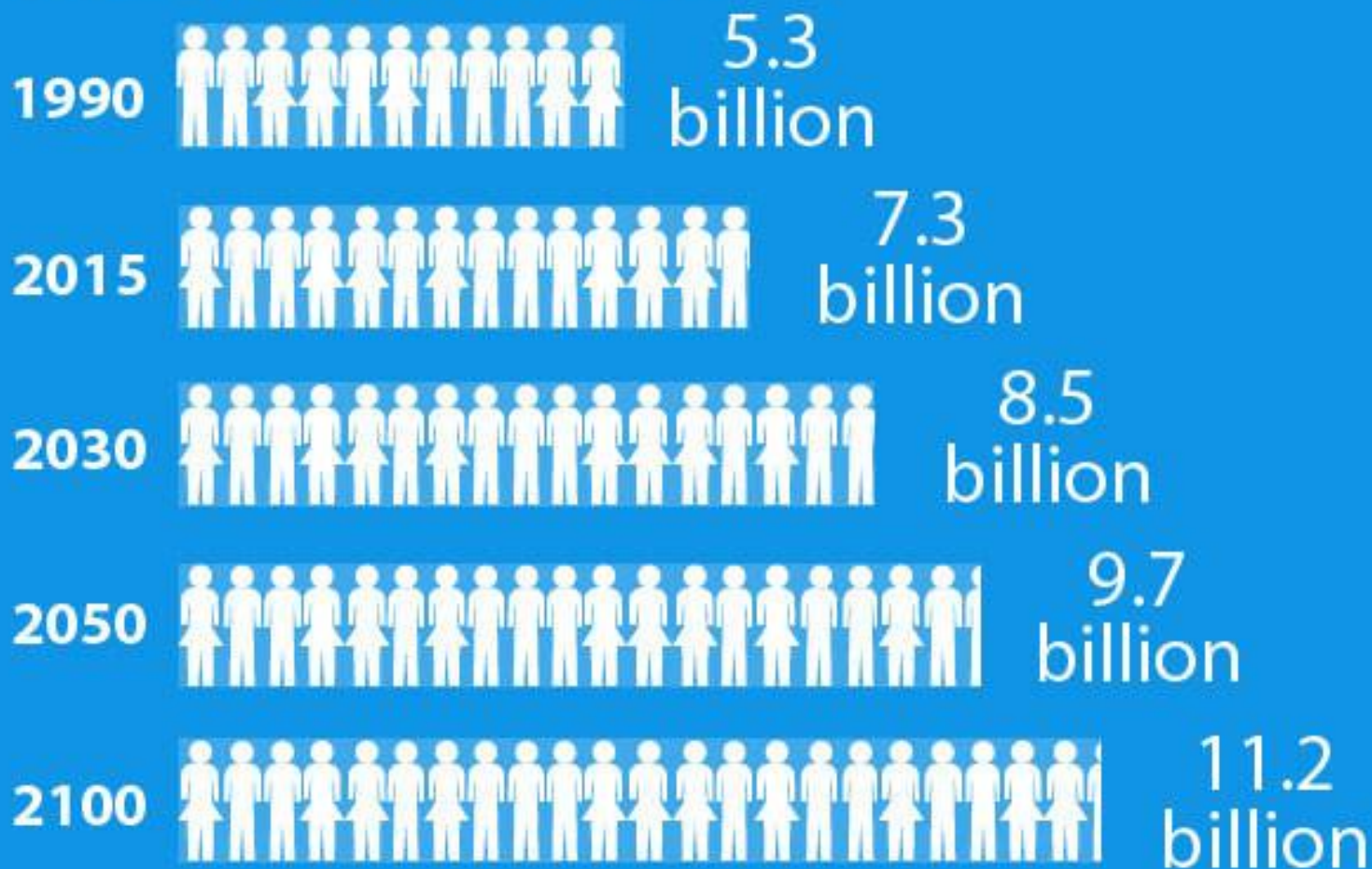


## THE ARCTIC IS WARMING FASTER THAN THE GLOBAL AVERAGE



# World Population

*Projected world population until 2100*



Source: United Nations Department of Economic and Social Affairs,  
Population Division, *World Population Prospects: The 2015 Revision*  
Produced by: United Nations Department of Public Information



2015  
TIME FOR  
GLOBAL ACTION  
SUSTAINABLE DEVELOPMENT GOALS