

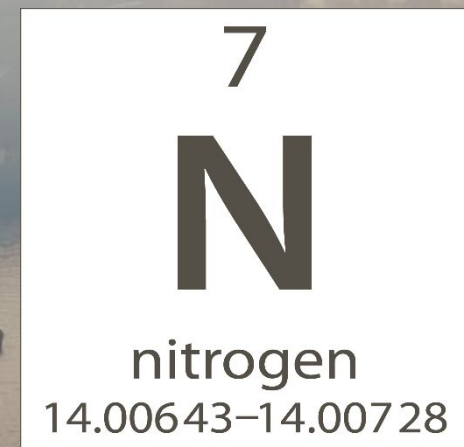
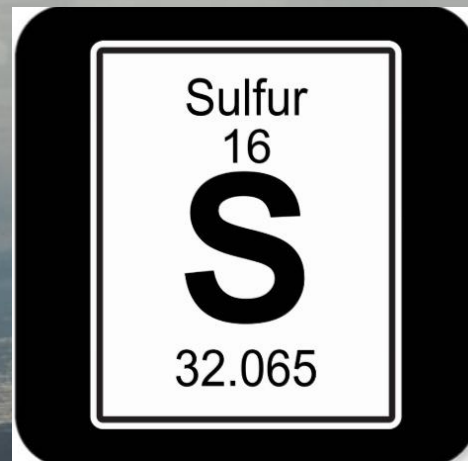
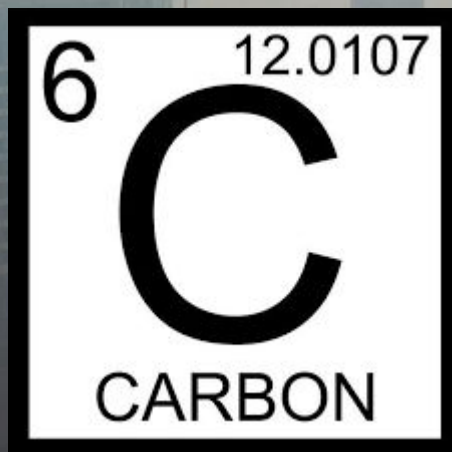
# AIR POLLUTION

A photograph of an industrial facility, likely a port or refinery, with two prominent black smokestacks. The left stack is emitting a thick, billowing plume of white and yellowish smoke that rises into the sky. The right stack is also emitting a plume of smoke, though it is less dense. The background shows a hazy, orange-tinted sky, suggesting a sunset or sunrise. In the foreground and middle ground, there are silhouettes of industrial structures, including cranes and a body of water. The overall scene conveys a sense of heavy industrial activity and environmental impact.

# WHAT IS AIR POLLUTION?

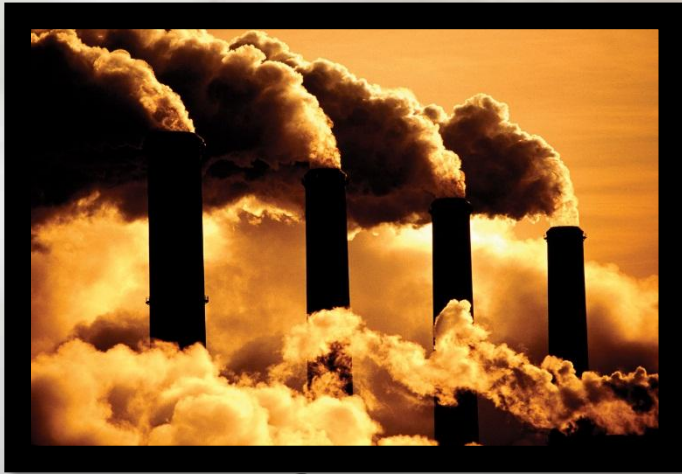
Air Pollution – A type of environmental problem, that affects the air.

Caused by :



# AIR POLLUTION CLASSIFICATION

POLLUTION CAN BE:



Gas



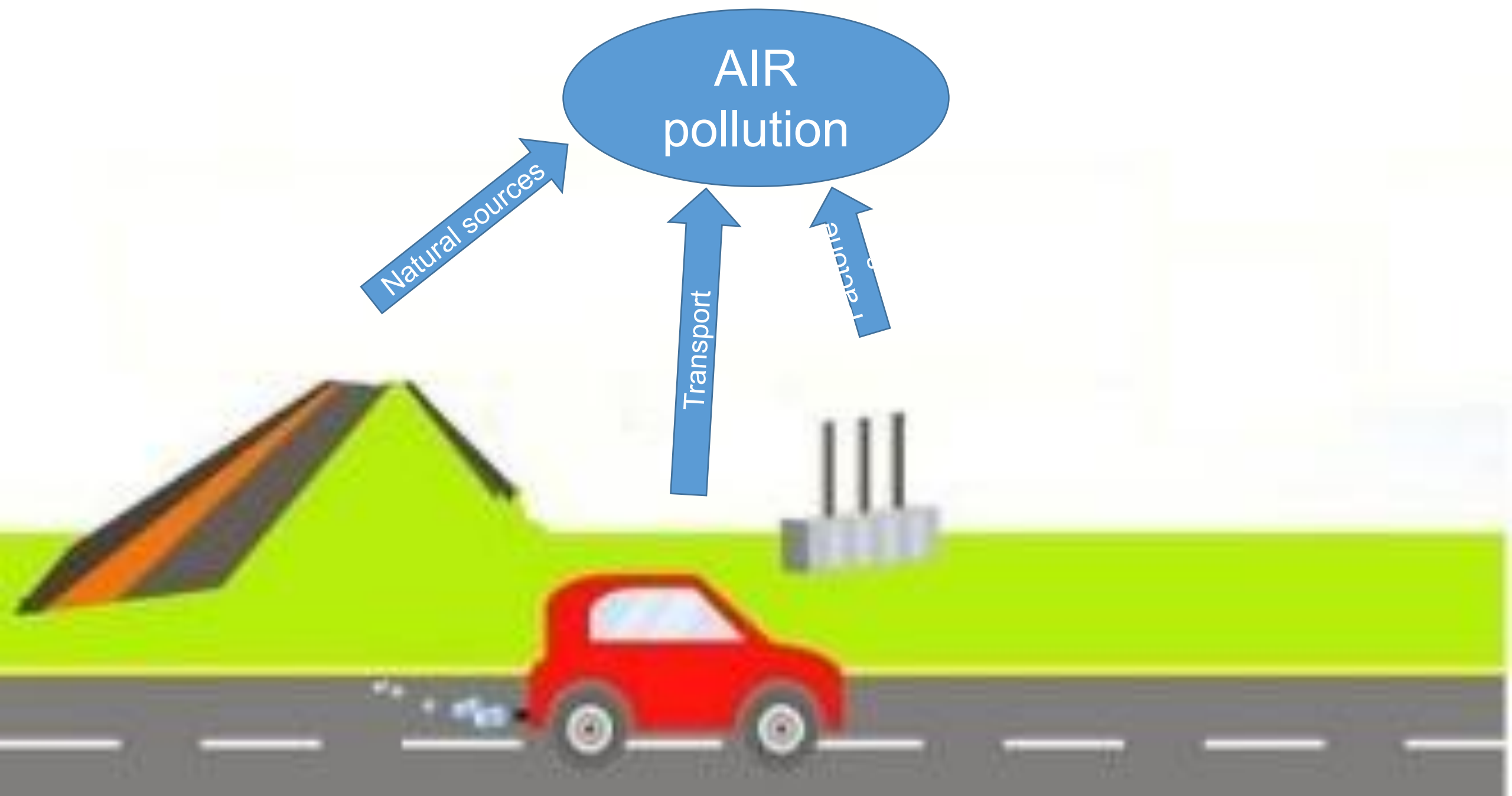
Liquid



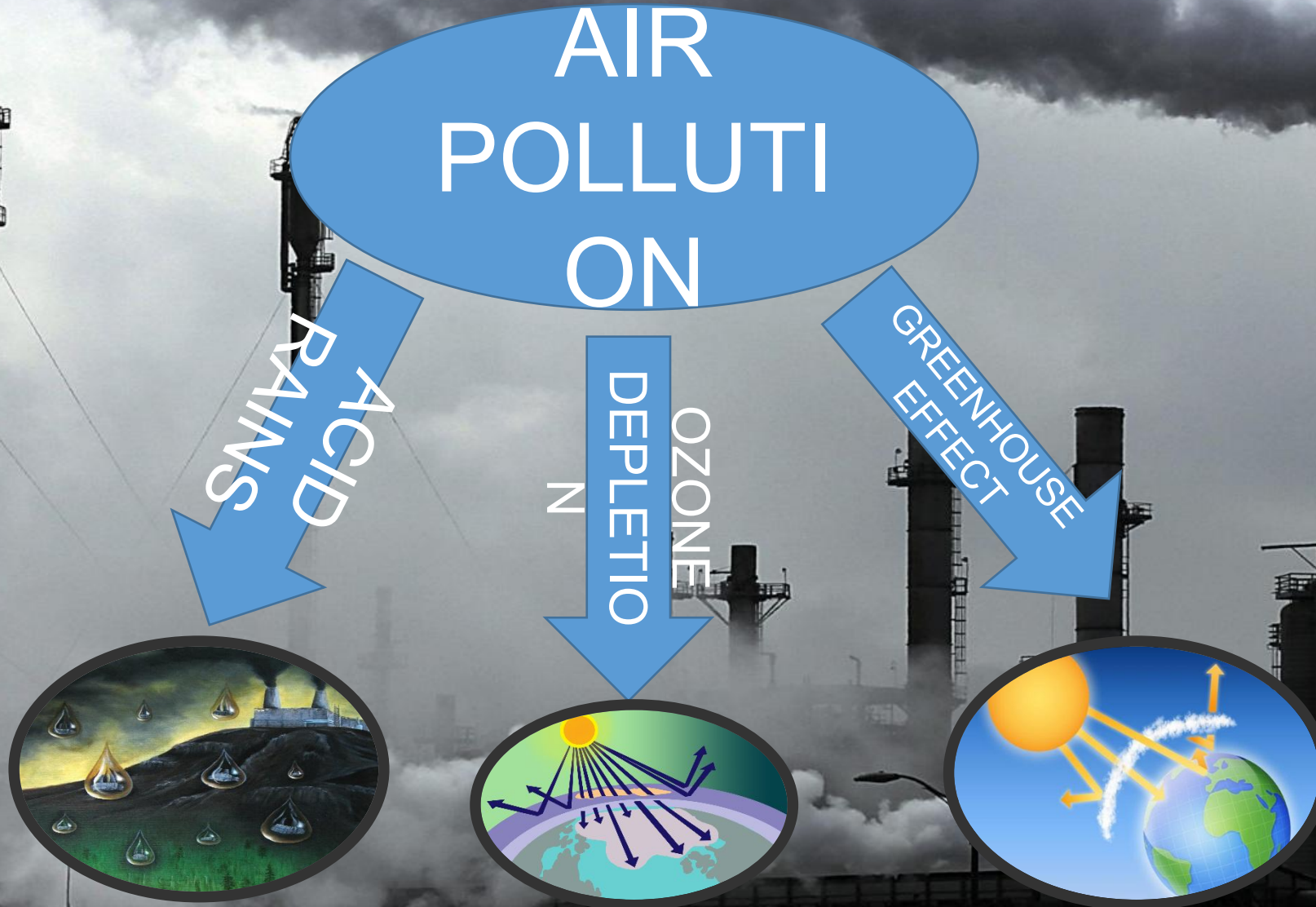
Solid



# Where does air pollution come from?



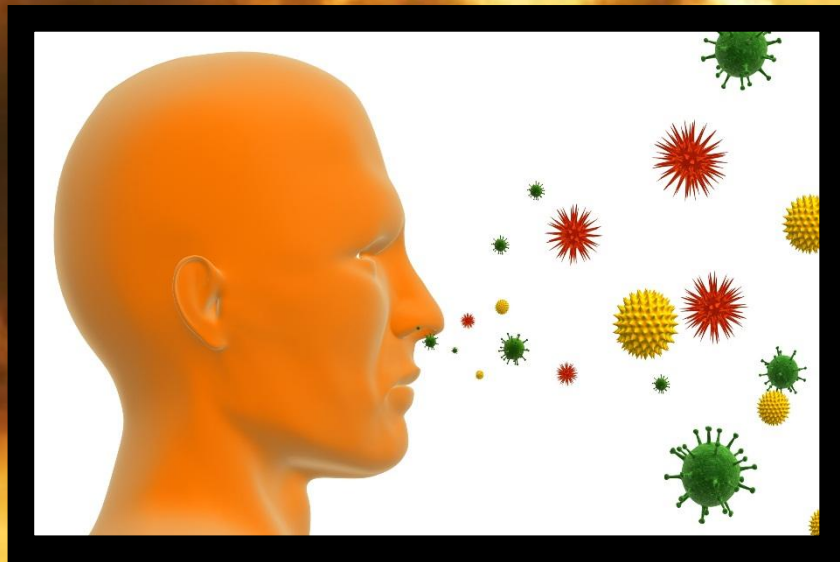
# WHAT DISASTERS DOES AIR POLLUTION CAUSE?





# WHY AIR POLLUTION IS BAD FOR OUR HEALTH?

AIR POLLUTION CAUSES SUCH ILLNESSES AS:



Allergy



Bronchitis



# HOW TO REDUCE AIR POLLUTION?

Walk or ride a bike when it is possible



Take public transportation. More vehicles mean more air pollution.



Drive less.





## IN CONCLUSION

Air pollution is a serious problem that you need to get rid of right now, otherwise there will be serious consequences from this. So people need to take care of the earth.



A wide-angle, high-angle photograph of a sprawling industrial complex, likely a steel mill or refinery. The scene is dominated by numerous tall, cylindrical smokestacks, many of which are emitting thick, billowing plumes of white steam or smoke that rise into a heavy, overcast sky. The industrial buildings below are dark, with complex piping and structural elements visible. The overall atmosphere is one of intense industrial activity and environmental impact.

THANK YOU FOR YOUR ATTENTION !