

Service Guide

Model	G4 Series
Revision	Revision 8.0
Date	24th Dec 2015

Revision History

No	Date	Revision	Country / buyer	Contents	Target	Type	Issue	Page
1	12 th Nov 2015	1.0	Global /All (Except USA, Canada, Puerto Rico)	Service Guide	Service Center	S/W	G4 series MSM Big core disable tool Guide	Page 2
2	20 th Nov 2015	2.0	Global /All (Except USA, Canada, Puerto Rico)	Service Guide	Service Center	S/W	(Modify) G4 series MSM Big Core disable tool Guide	Page 6
3	26 th Nov 2015	3.0	Global /All (Except USA, Puerto Rico)	Service Guide	Service Center	S/W	(Add) G4 series MSM Big Core disable tool Guide	Page 10
4	08 th Dec 2015	4.0	Global /All (Except USA, Puerto Rico)	Service Guide	Service Center	S/W	(Add) G4 series MSM Big Core disable tool Guide	Page 11
5	11 th Dec 2015	5.0	Global /All (Except USA)	Service Guide	Service Center	S/W	(Add) G4 series MSM Big Core disable tool Guide	Page 12
6	18 th Dec 2015	6.0	Global /All (Except USA, Canada, Puerto Rico, Chile, China, Japan)	Service Guide	Service Center	S/W	(MOS Add) G4 series MSM Big Core disable tool Guide	Page 13
7	23 th Dec 2015	7.0	Global /All	Service Guide	BRC	H/W	G4 series MSM Ball crack repair Guide	Page 16
8	23 th Dec 2015	7.1	Global /All	Service Guide	BRC	H/W	(Modify) G4 series MSM Ball crack repair Guide	Page 17
6	24 th Dec 2015	8.0	Global /All (Except USA, Canada, Chile, China, Japan)	Service Guide	Service Center	S/W	(MOS Add) G4 series MSM Big Core disable tool Guide	Page 13

Service Guide

G4 series MSM Big core disable tool Guide

Model	G4 series	Revision	Rev 1.0	Date	12 th Nov 2015	Country	Global	Buyer	All(Except USA, Canada, Puertorico)	Type	S/W
Contents	<input checked="" type="checkbox"/> Service Information <input type="checkbox"/> Guide <input type="checkbox"/> Notification					Target	<input type="checkbox"/> BRC <input checked="" type="checkbox"/> DSC <input checked="" type="checkbox"/> ASC <input type="checkbox"/> CIC				
Information Guide											

※ This document must be translated to language of each country

1. Purpose

- Sometimes G4 series phone happens “Infinite loop Auto power off” issue.
- if phone’s symptom is “Infinite loop Auto power off”, you should Change a Main board.
- if customer wants to Data Back-up, you should use this Recovery tool.
- Please Data Back-up proceed after Recovery complete.
- This Phone (Recovery was completed) is abnormal Main Board.
- Please don't reuse the Main Board.

2. Installation Produre

- G4 series MSM Big core disable tool Install_V1.0.zip file unzip on C Drive.
- LGUP_install_Ver**.msi file installed on the C drive.
- LGUP_8994_DLL_Ver_**.msi file installed on the C drive.
- Check the G4 series MSM Big core disable tool File folder. (C Drive)
- tot files must be selected according to the tot file series model.

3. Notice

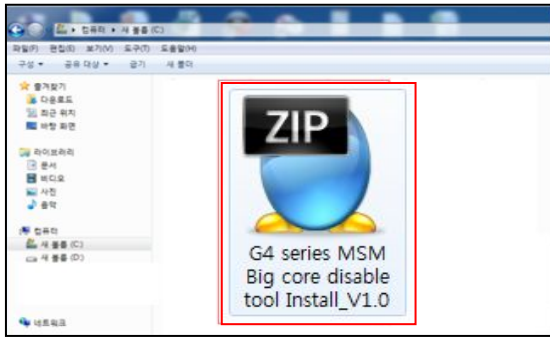
- if you have checked the other symptom Power Problem (Except “Infinite loop Auto power off”), shouldn’t use this tool.
- This tool is support from Only L OS.
- **GSFS Customer Symptom code : “Auto Power off”**



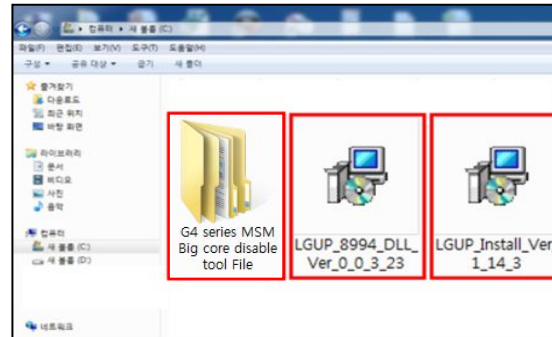
Tot file series	Model name
H815XX Series	LGH815
	LGH815AR
	LGH815K
	LGH815L
	LGH815P
	LGH815PX
	LGH815T
H818XX Series	LGH818
	LGH818P
	LGH818N
H819XX Series	LGH819
V32 Series	LGV32
H810XX Series	LGH810PR
H820XX Series	LGH820

※ Please refer more detail Install & User Guide on the Next page.

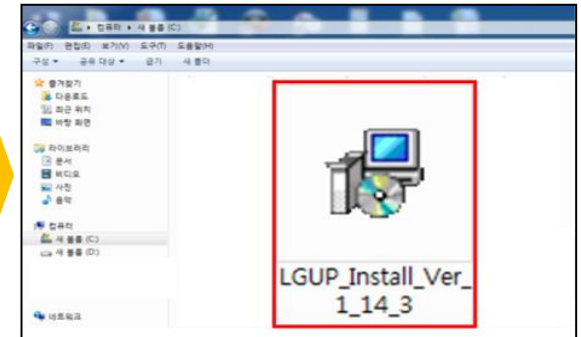
◆ G4 series MSM Big core disable tool Install Procedure



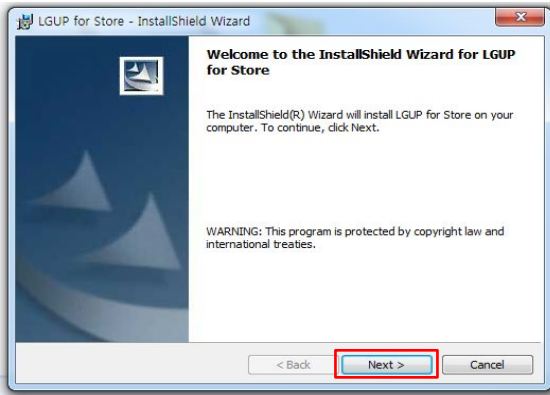
Install zipfile



Unzip on C drive



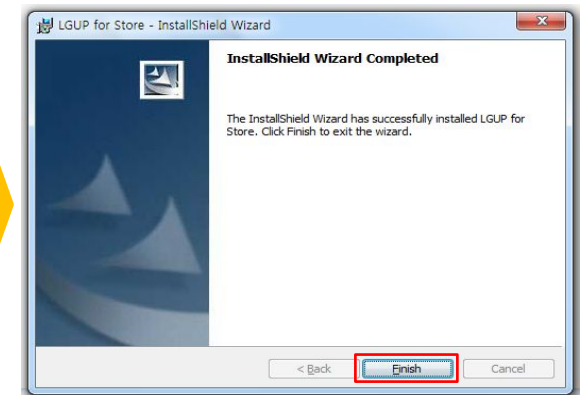
Recovery tool Install file Double click.



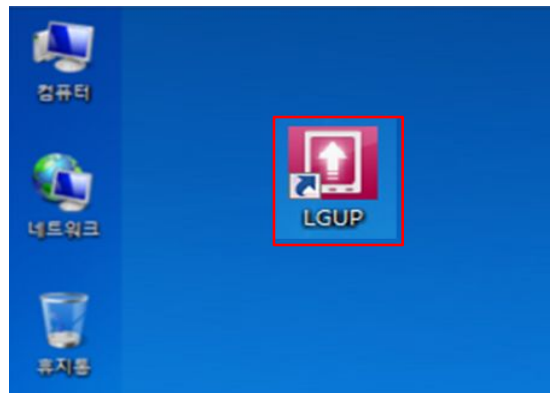
"Next" Click.



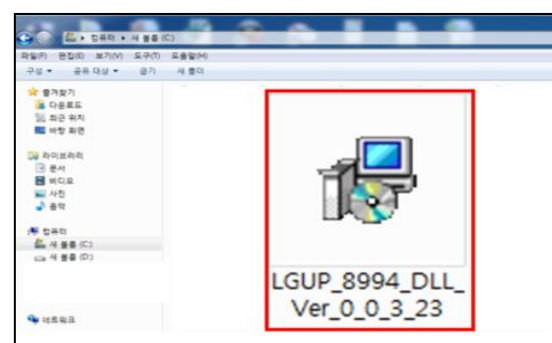
I accept~ Click & "Next" Click.



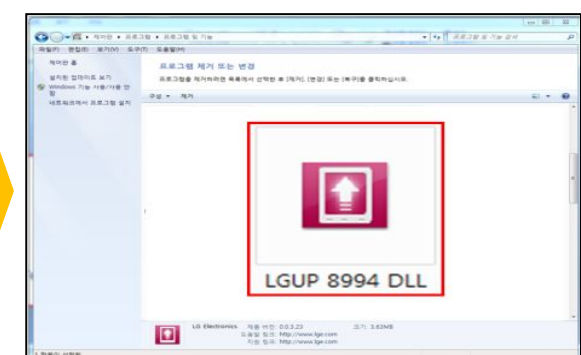
"Finish" Click



LGUP Program Install Complete.

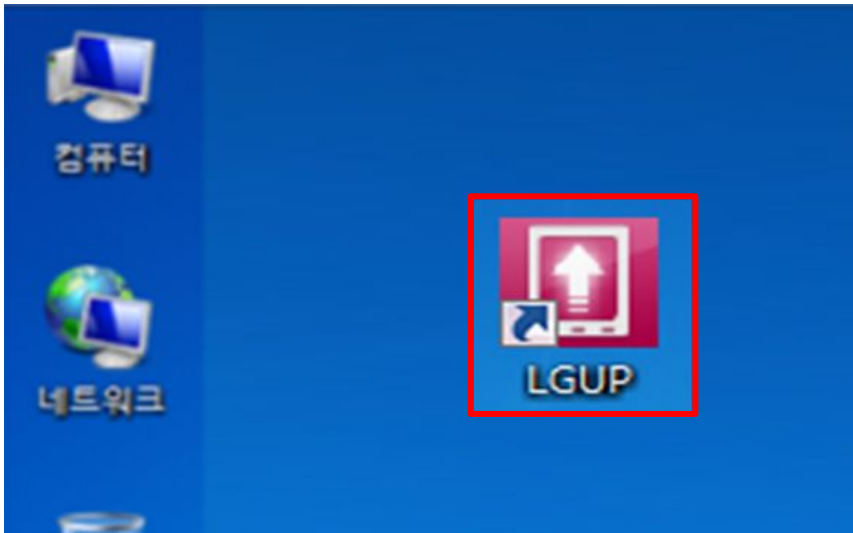


DLL Install file Double click.

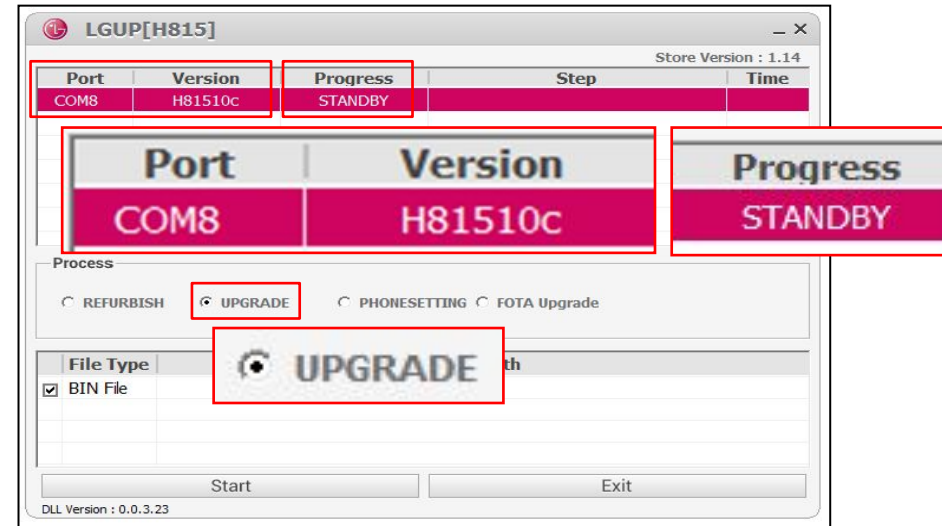


DLL file Install Complete.
(You can check "Control Panel")

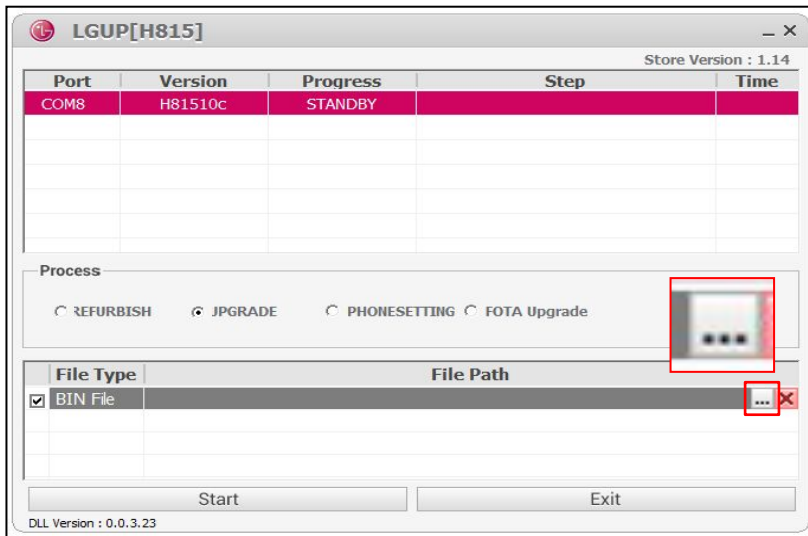
◆ G4 series MSM Big core disable tool Procedure



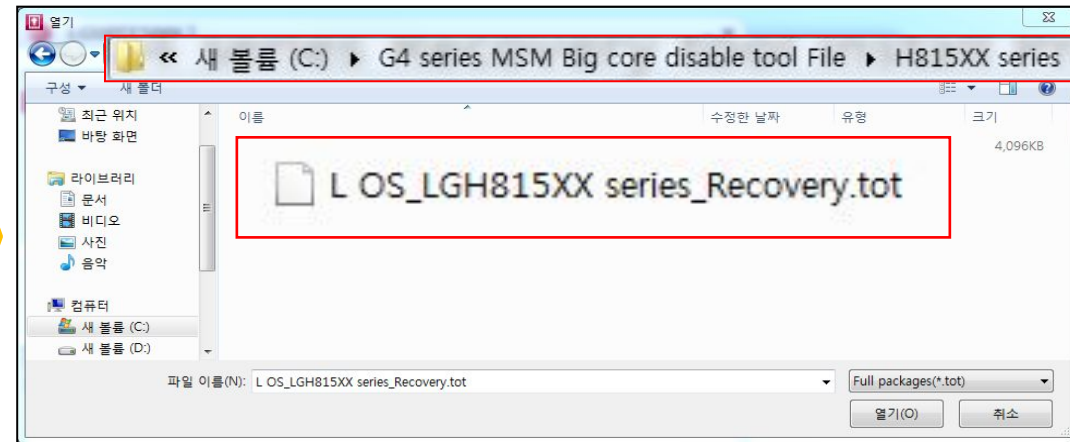
- 910K D/L Cable connect.
- LGUP icon Double click.



- Check the Port & Phone Model.
- Check the Progress "STANDBY"
- Check the Process "UPGRADE"

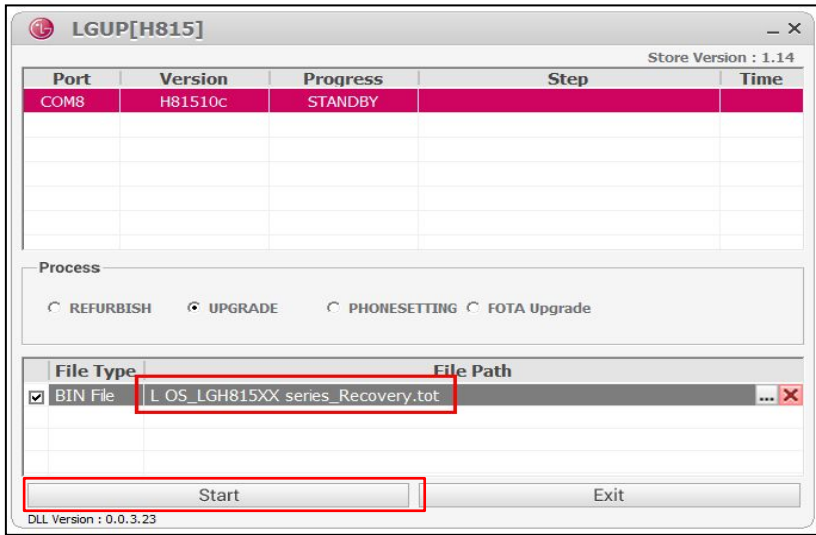


Select the Bin File (*.tot).

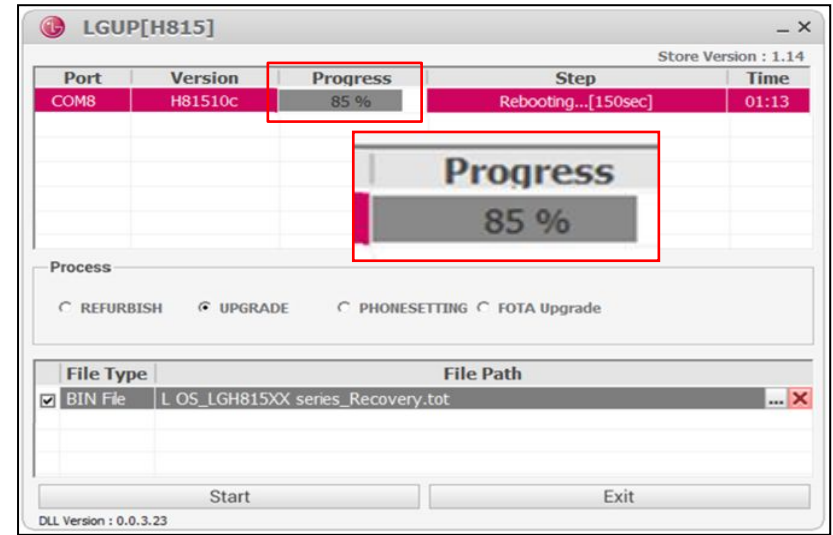


- Check the Bin file (*.tot).
- "Open" Button click.

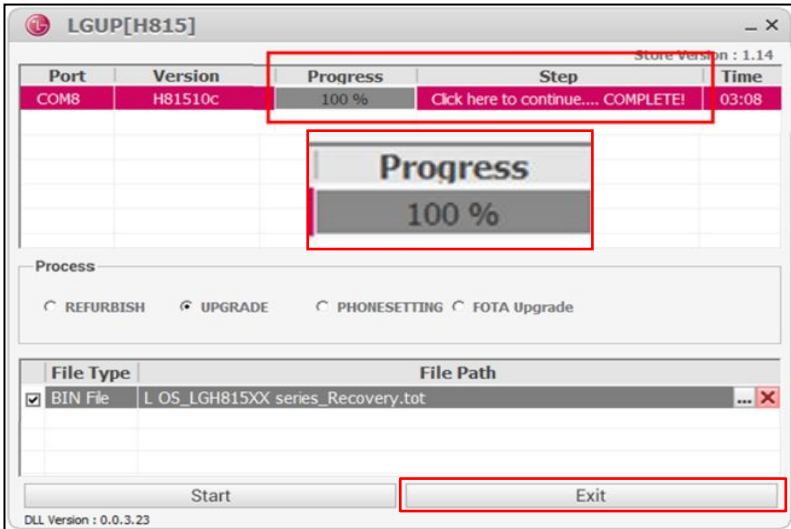
◆ G4 series MSM Big core disable tool Procedure



- Check the file Path.
- “Start” Button click.



- Check the Progress “0~99%”



- Recovery is complete.
- “Exit” Button click.



You can customer's user Data Back-up !!!

(Modify) G4 series MSM Big core disable tool Guide

Model	G4 series	Revision	Rev 2.0	Date	20 th Nov 2015	Country	Global	Buyer	All(Except USA, Canada, Puertorico)	Type	S/W
Contents	<input checked="" type="checkbox"/> Service Information <input type="checkbox"/> Guide <input type="checkbox"/> Notification					Target	<input type="checkbox"/> BRC <input checked="" type="checkbox"/> DSC <input checked="" type="checkbox"/> ASC <input type="checkbox"/> CIC				
Information Guide											

✳ This document must be translated to language of each country

1. Purpose

- Sometimes G4 series phone happens “Infinite loop Auto power off” issue.
- if phone’s symptom is “Infinite loop Auto power off”, you should Change a Main board.
- if customer wants to Data Back-up, you should use this Recovery tool.
- Please Data Back-up proceed after Recovery complete.
- This Phone (Recovery was completed) is abnormal Main Board.
- Please don't reuse the Main Board.

2. Installation Produre

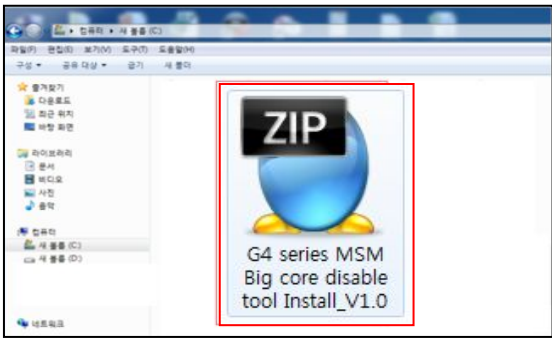
- if you had a v1.0 tot file folder, you should remove v1.0 tot file folder on C drive.
- you should check v2.0 tot file folder on C driver.
- if you use the LGUP tool, you should check “Model name” & “tot file name”. (Please refer right side table)
- **LGUP, DLL file is not changed.**

3. Notice

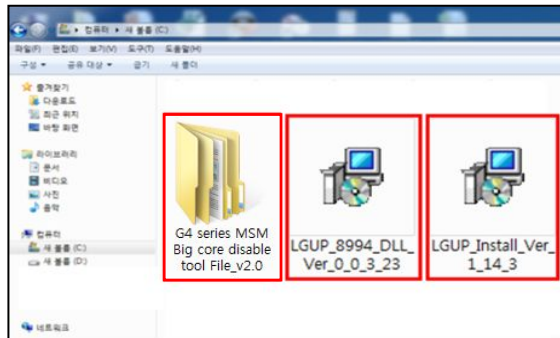
- if you have checked the other symptom Power Problem (Except “Infinite loop Auto power off”), shouldn’t use this tool.
- This tool is support from Only L OS.
- **GSFS Customer Symptom code : “Auto Power off”**

Model name	tot file Name
LGH815	LGH815AT-00-V10g-GLOBAL-COM-NOV-18-2015+0_RECOVERY_5.1
LGH815K	LGH815AT-00-V10g-GLOBAL-COM-NOV-18-2015+0_RECOVERY_5.1
LGH815TR	LGH815AT-00-V10g-GLOBAL-COM-NOV-18-2015+0_RECOVERY_5.1
LGH818	H81810c_RECOVERY_5.1
LGH818P	LGH818AT-00-V10c-GLOBAL-COM-NOV-17-2015+0_RECOVERY_5.1
LGH818N	LGH818AT-00-V10c-GLOBAL-COM-NOV-17-2015+0_RECOVERY_5.1
LGH819	H81910c_RECOVERY_5.1
LGV32	LGV3210o_RECOVERY_5.1

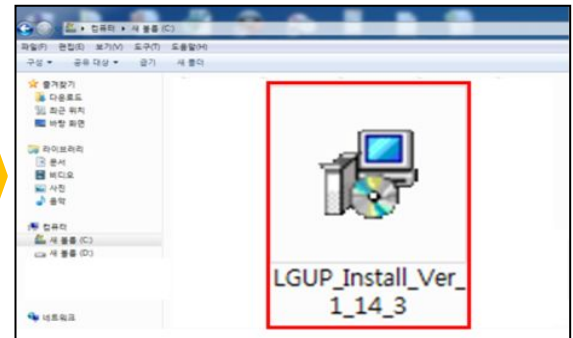
◆ G4 series MSM Big core disable tool Install Procedure



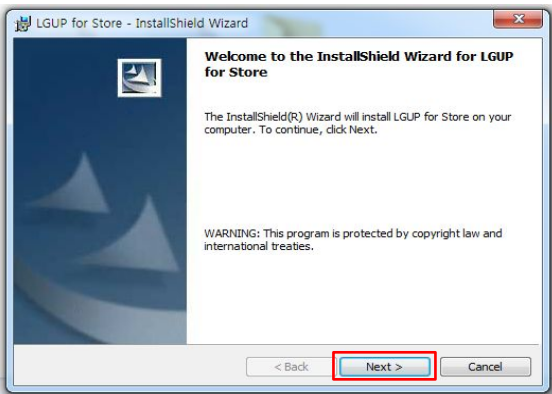
• Install zip file



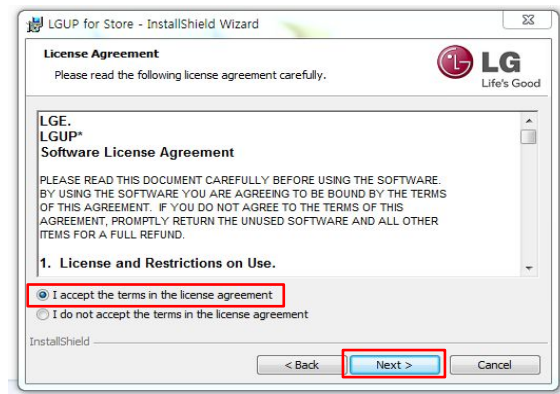
• Unzip on C rive



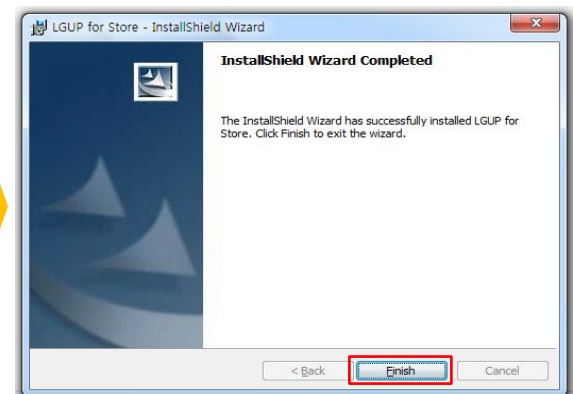
• Recovery tool Install file click.



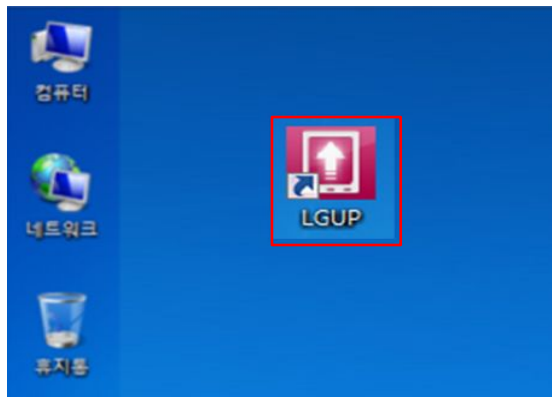
• "Next" Click.



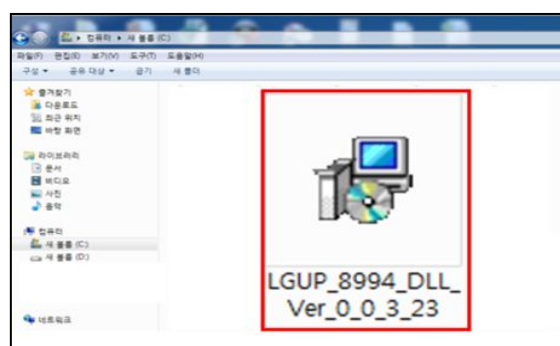
• I accept~ Click & "Next" Click.



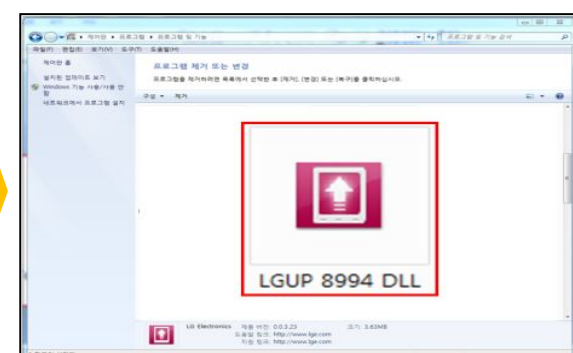
• "Finish" Click



• LGUP Program Install Complete.

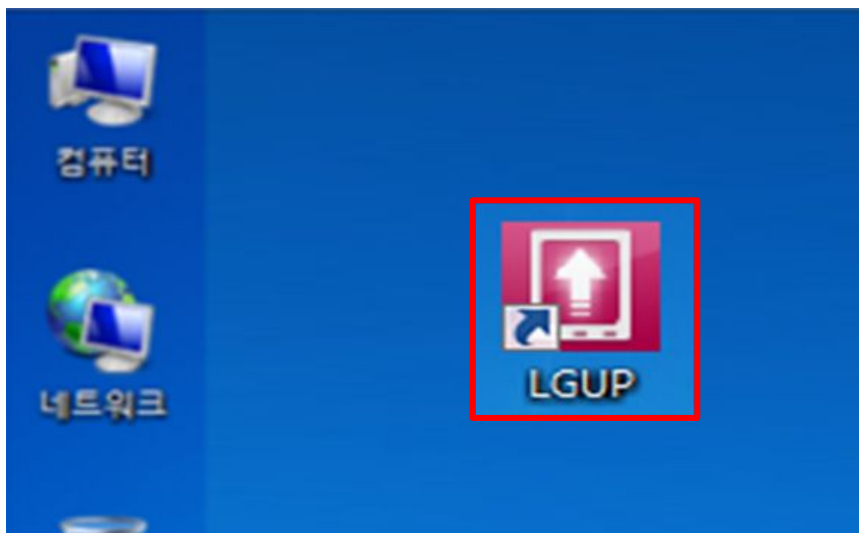


• DLL Install file Double click.

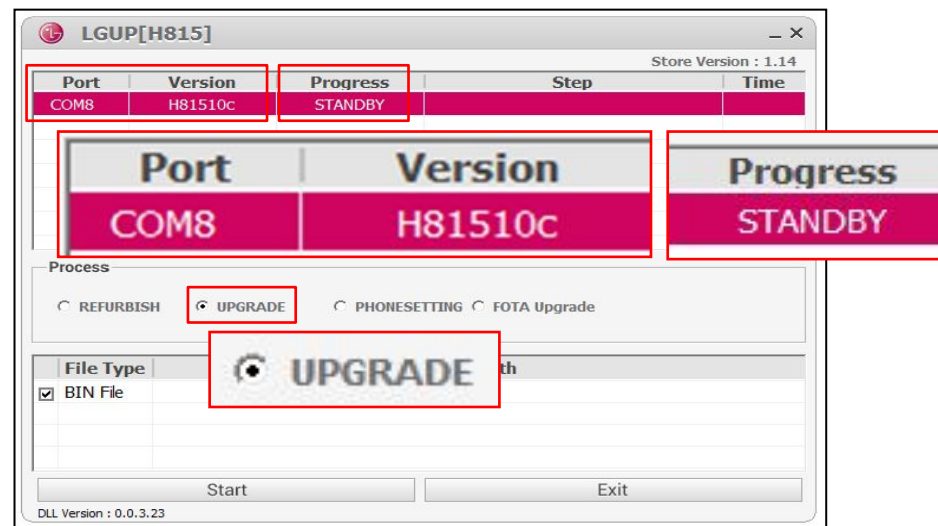


• DLL file Install Complete.
(You can check "Control Panel")

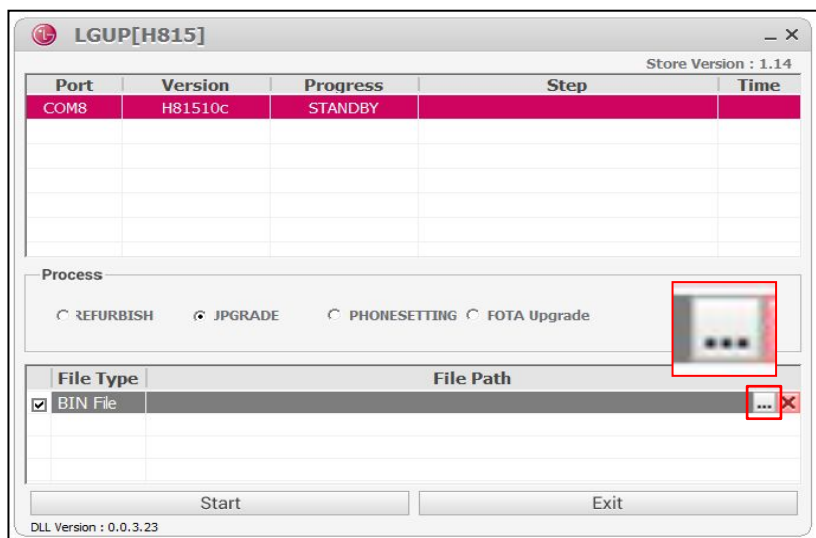
◆ G4 series MSM Big core disable tool Procedure



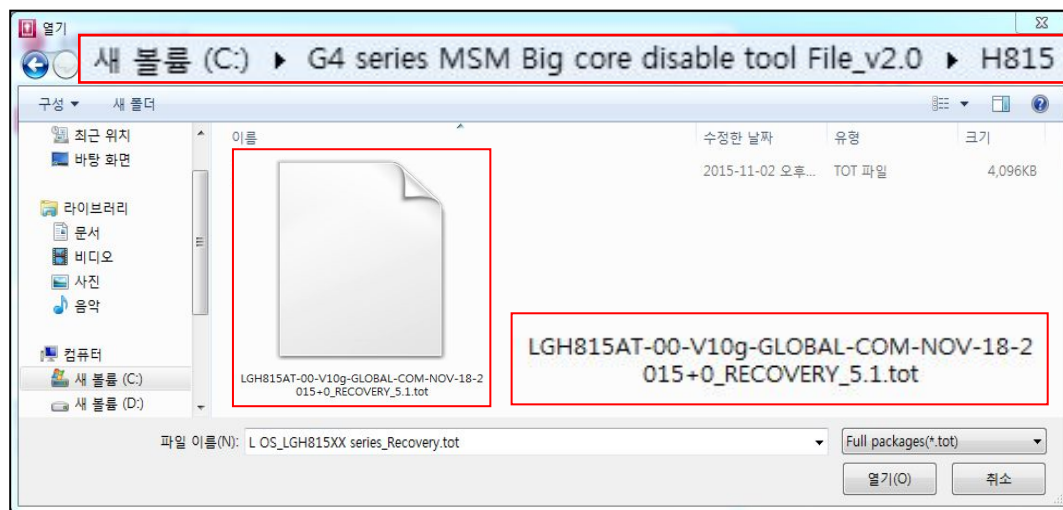
- 910K D/L Cable connect.
- LGUP icon Double click.



- Check the Port & Phone Model.
- Check the Progress "STANDBY"
- Check the Process "UPGRADE"

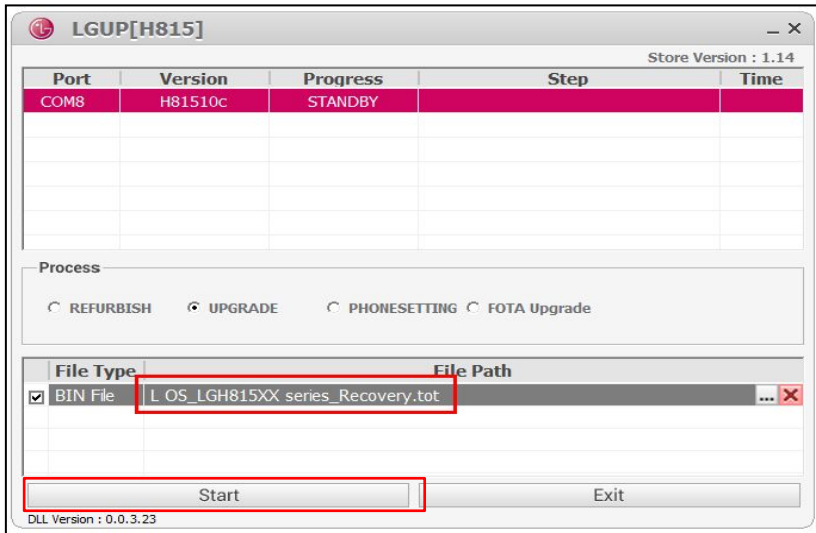


- Select the Bin File (*.tot).

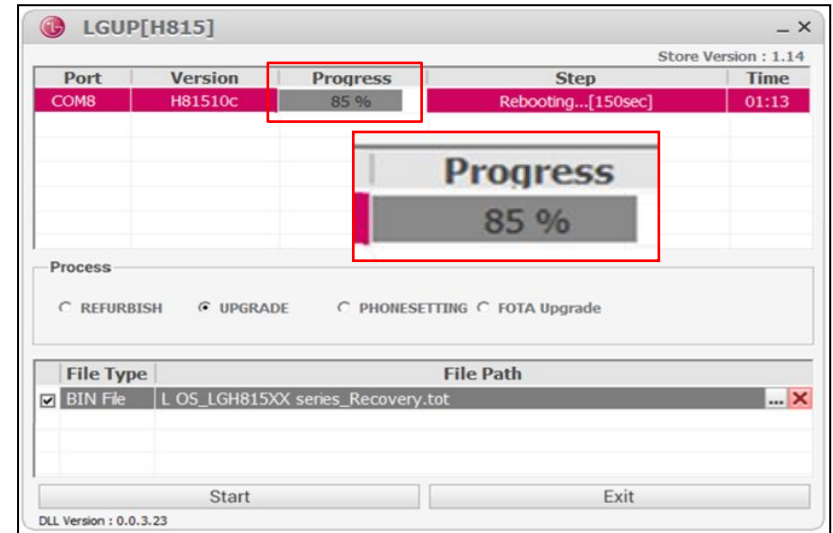


- Check the Bin file (*.tot).
- "Open" Button click.

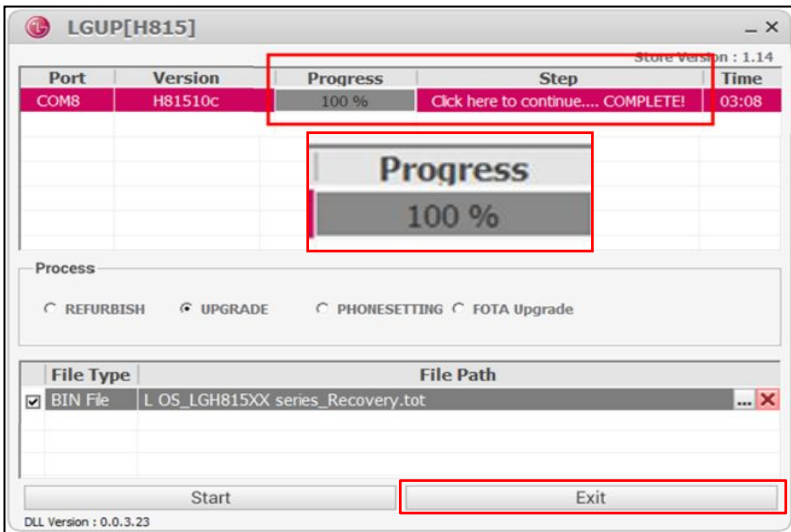
◆ G4 series MSM Big core disable tool Procedure



- Check the file Path.
- “Start” Button click.



- Check the Progress “0~99%”



You can customer's user Data Back-up !!!



- Recovery is complete.
- “Exit” Button click.

(Add) G4 series MSM Big core disable tool Guide

Model	G4 series	Revision	Rev 3.0	Date	26 th Nov 2015	Country	Global	Buyer	All(Except USA, Puertorico)	Type	S/W
Contents	<input checked="" type="checkbox"/> Service Information <input type="checkbox"/> Guide <input type="checkbox"/> Notification					Target	<input type="checkbox"/> BRC <input checked="" type="checkbox"/> DSC <input checked="" type="checkbox"/> ASC <input type="checkbox"/> CIC				
Information Guide											

❖ This document must be translated to language of each country

1. Purpose

- Sometimes G4 series phone happens “Infinite loop Auto power off” issue.
- if phone’s symptom is “Infinite loop Auto power off”, you should Change a Main board.
- if customer wants to Data Back-up, you should use this Recovery tool.
- Please Data Back-up proceed after Recovery complete.
- This Phone (Recovery was completed) is abnormal Main Board.
- Please don't reuse the Main Board.

2. Installation Produre

- **if you had a v1.0 tot file folder, you should remove v1.0 tot file folder on C drive.**
- **you should check v2.0 tot file folder on C driver.**
- if you use the LGUP tool, you should check “Model name” & “tot file name”. (Please refer right side table)
- **LGUP, DLL file is not changed.**

3. Notice

- if you have checked the other symptom Power Problem (Except “Infinite loop Auto power off”), shouldn’t use this tool.
- This tool is support from Only L OS.
- **GSFS Customer Symptom code : “Auto Power off”**

Model name	tot file Name
LGH812	H81210h_recovery_RECOVERY_5.1
LGH815	LGH815AT-00-V10g-GLOBAL-COM-NOV-18-2015+0_RECOVERY_5.1
LGH815K	LGH815AT-00-V10g-GLOBAL-COM-NOV-18-2015+0_RECOVERY_5.1
LGH815TR	LGH815AT-00-V10g-GLOBAL-COM-NOV-18-2015+0_RECOVERY_5.1
LGH818	H81810c_RECOVERY_5.1
LGH818P	LGH818AT-00-V10c-GLOBAL-COM-NOV-17-2015+0_RECOVERY_5.1
LGH818N	LGH818AT-00-V10c-GLOBAL-COM-NOV-17-2015+0_RECOVERY_5.1
LGH819	H81910c_RECOVERY_5.1
LGV32	LGV3210o_RECOVERY_5.1

(Add) G4 series MSM Big core disable tool Guide

Model	G4 series	Revision	Rev 4.0	Date	08 th Dec 2015	Country	Global	Buyer	All(Except USA, Puertorico)	Type	S/W
Contents	<input checked="" type="checkbox"/> Service Information <input type="checkbox"/> Guide <input type="checkbox"/> Notification					Target	<input type="checkbox"/> BRC <input checked="" type="checkbox"/> DSC <input checked="" type="checkbox"/> ASC <input type="checkbox"/> CIC				
Information Guide											

❖ This document must be translated to language of each country

1. Purpose

- Sometimes G4 series phone happens “Infinite loop Auto power off” issue.
- if phone’s symptom is “Infinite loop Auto power off”, you should Change a Main board.
- if customer wants to Data Back-up, you should use this Recovery tool.
- Please Data Back-up proceed after Recovery complete.
- This Phone (Recovery was completed) is abnormal Main Board.
- Please don't reuse the Main Board.

2. Installation Produre

- if you had a v1.0 tot file folder, you should remove v1.0 tot file folder on C drive.
- you should check v2.0 tot file folder on C driver.
- if you use the LGUP tool, you should check “Model name” & “tot file name”. (Please refer right side table)
- LGUP, DLL file is not changed.

3. Notice

- if you have checked the other symptom Power Problem (Except “Infinite loop Auto power off”), shouldn’t use this tool.
- This tool is support from Only L OS.
- **GSFS Customer Symptom code : “Auto Power off”**

Model	tot file Name
LGH812	H81210h_recovery_RECOVERY_5.1
LGH815	LGH815AT-00-V10g-GLOBAL-COM-NOV-18-2015+0_RECOVERY_5.1
LGH815AR	LGH815AT-00-V10g-GLOBAL-COM-NOV-18-2015+0_RECOVERY_5.1
LGH815K	LGH815AT-00-V10g-GLOBAL-COM-NOV-18-2015+0_RECOVERY_5.1
LGH815L	LGH815AT-00-V10g-GLOBAL-COM-NOV-18-2015+0_RECOVERY_5.1
LGH815P	LGH815AT-00-V10g-GLOBAL-COM-NOV-18-2015+0_RECOVERY_5.1
LGH815PX	LGH815AT-00-V10g-GLOBAL-COM-NOV-18-2015+0_RECOVERY_5.1
LGH815T	LGH815AT-00-V10g-GLOBAL-COM-NOV-18-2015+0_RECOVERY_5.1
LGH815TR	LGH815AT-00-V10g-GLOBAL-COM-NOV-18-2015+0_RECOVERY_5.1
LGH818	H81810c_RECOVERY_5.1
LGH818N	LGH818AT-00-V10c-GLOBAL-COM-NOV-17-2015+0_RECOVERY_5.1
LGH818P	LGH818AT-00-V10c-GLOBAL-COM-NOV-17-2015+0_RECOVERY_5.1
LGH819	H81910c_RECOVERY_5.1
LGV32	LGV3210o_RECOVERY_5.1

(Add) G4 series MSM Big core disable tool Guide

Model	G4 series	Revision	Rev 5.0	Date	11 th Dec 2015	Country	Global	Buyer	All (Except USA)	Type	S/W	
Contents	<input checked="" type="checkbox"/> Service Information <input type="checkbox"/> Guide <input type="checkbox"/> Notification					Target	<input type="checkbox"/> BRC <input checked="" type="checkbox"/> DSC <input checked="" type="checkbox"/> ASC <input type="checkbox"/> CIC					
Information Guide												

※ This document must be translated to language of each country

1. Purpose

- Sometimes G4 series phone happens “Infinite loop Auto power off” issue.
- if phone’s symptom is “Infinite loop Auto power off”, you should Change a Main board.
- if customer wants to Data Back-up, you should use this Recovery tool.
- Please Data Back-up proceed after Recovery complete.
- This Phone (Recovery was completed) is abnormal Main Board.
- Please don't reuse the Main Board.

2. Installation Produre

- if you had a v1.0 tot file folder, you should remove v1.0 tot file folder on C drive.
- you should check v2.0 tot file folder on C driver.
- if you use the LGUP tool, you should check “Model name” & “tot file name”. (Please refer right side table)
- **LGUP, DLL file is not changed.**

3. Notice

- if you have checked the other symptom Power Problem (Except “Infinite loop Auto power off”), shouldn’t use this tool.
- This tool is support from Only L OS.
- **GSFS Customer Symptom code : “Auto Power off”**

Model	tot file Name
LGH810PR	LGH810AT-00-V10a-GLOBAL-COM-DEC-08-2015+0_RECOVERY_5.1
LGH812	H81210h_recovery_RECOVERY_5.1
LGH815	LGH815AT-00-V10g-GLOBAL-COM-NOV-18-2015+0_RECOVERY_5.1
LGH815AR	LGH815AT-00-V10g-GLOBAL-COM-NOV-18-2015+0_RECOVERY_5.1
LGH815K	LGH815AT-00-V10g-GLOBAL-COM-NOV-18-2015+0_RECOVERY_5.1
LGH815L	LGH815AT-00-V10g-GLOBAL-COM-NOV-18-2015+0_RECOVERY_5.1
LGH815P	LGH815AT-00-V10g-GLOBAL-COM-NOV-18-2015+0_RECOVERY_5.1
LGH815PX	LGH815AT-00-V10g-GLOBAL-COM-NOV-18-2015+0_RECOVERY_5.1
LGH815T	LGH815AT-00-V10g-GLOBAL-COM-NOV-18-2015+0_RECOVERY_5.1
LGH815TR	LGH815AT-00-V10g-GLOBAL-COM-NOV-18-2015+0_RECOVERY_5.1
LGH818	H81810c_RECOVERY_5.1
LGH818N	LGH818AT-00-V10c-GLOBAL-COM-NOV-17-2015+0_RECOVERY_5.1
LGH818P	LGH818AT-00-V10c-GLOBAL-COM-NOV-17-2015+0_RECOVERY_5.1
LGH819	H81910c_RECOVERY_5.1
LGV32	LGV3210o_RECOVERY_5.1

(MOS Add) G4 series MSM Big core disable tool Guide

Model	G4 series ✓	Revision	Rev 6.0	Date	18 th Dec 2015	Country	Global	Buyer	All (Except USA, Canada, Chile,China, Japan) ✓	Type	S/W
Contents	<input type="checkbox"/> Service Information <input type="checkbox"/> Guide <input type="checkbox"/> Notification					Target	<input type="checkbox"/> BRC <input type="checkbox"/> DSC <input type="checkbox"/> ASC <input type="checkbox"/> CIC				

Information Guide

* This document must be translated to language of each country

1. Purpose

- Sometimes G4 series phone happens “Infinite loop Auto power off” issue.
- if phone’s symptom is “Infinite loop Auto power off”, you should Change a Main board.
- if customer wants to Data Back-up, you should use this Recovery tool.
- Please Data Back-up proceed after Recovery complete.
- This Phone (Recovery was completed) is abnormal Main Board.
- Please don't reuse the Main Board.

2. Installation Prodre

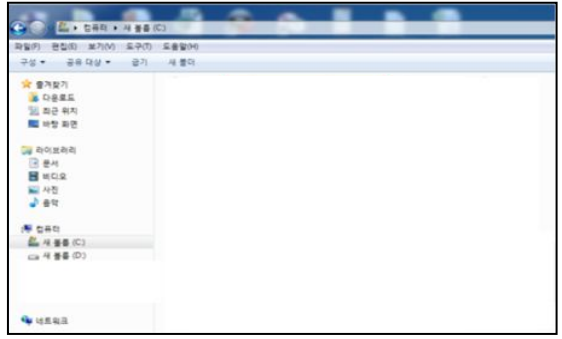
- [Case 1] if there is Previously tot file folder.
: Delete old tot file folder, Download New tot file folder on C drive
- [Case 2] if there is no a Previously tot file folder.
: Download New tot file folder on C drive
- if you use the LGUP tool, you should check “Model name” “Android OS version & “tot file name” .
 (Please refer right side table)
- LGUP, DLL file is not changed.

3. Notice

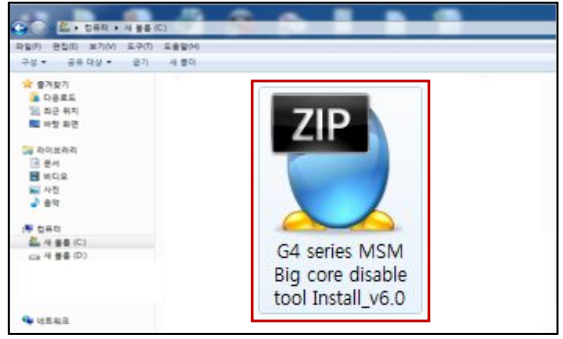
- if you have checked the other symptom Power Problem (Except “Infinite loop Auto power off”), shouldn't use this tool.
- GSFS Customer Symptom code : “Auto Power off”

Model	tot file Name	
	Android OS : LOS	Android OS : MOS
LGH810PR	LGH810AT-00-V10a-GLOBAL-COM-DEC-08-2015+0_RECOVERY_5.1	
LGH812	H81210h_recovery_RECOVERY_5.1	
LGH815	LGH815AT-00-V10g-GLOBAL-COM-NOV-18-2015+0_RECOVERY_5.1	LGH815AT-00-V20a-GLOBAL-COM-NOV-02-2015+00_RECOVERY_6.0
LGH815AR	LGH815AT-00-V10g-GLOBAL-COM-NOV-18-2015+0_RECOVERY_5.1	LGH815AT-00-V20a-GLOBAL-COM-NOV-18-2015+0_RECOVERY_6.0
LGH815K	LGH815AT-00-V10g-GLOBAL-COM-NOV-18-2015+0_RECOVERY_5.1	LGH815AT-00-V20a-GLOBAL-COM-NOV-02-2015+00_RECOVERY_6.0
LGH815L	LGH815AT-00-V10g-GLOBAL-COM-NOV-18-2015+0_RECOVERY_5.1	LGH815AT-00-V20a-GLOBAL-COM-NOV-02-2015+00_RECOVERY_6.0
LGH815P	LGH815AT-00-V10g-GLOBAL-COM-NOV-18-2015+0_RECOVERY_5.1	LGH815AT-00-V20a-GLOBAL-COM-NOV-18-2015+0_RECOVERY_6.0
LGH815PX	LGH815AT-00-V10g-GLOBAL-COM-NOV-18-2015+0_RECOVERY_5.1	
LGH815T	LGH815AT-00-V10g-GLOBAL-COM-NOV-18-2015+0_RECOVERY_5.1	LGH815AT-00-V20a-GLOBAL-COM-NOV-02-2015+00_RECOVERY_6.0
LGH815TR	LGH815AT-00-V10g-GLOBAL-COM-NOV-18-2015+0_RECOVERY_5.1	LGH815AT-00-V20a-GLOBAL-COM-NOV-02-2015+00_RECOVERY_6.0
LGH818	H81810c_RECOVERY_5.1	
LGH818N	LGH818AT-00-V10c-GLOBAL-COM-NOV-17-2015+0_RECOVERY_5.1	LGH818AT-00-V20a-GLOBAL-COM-DEC-08-2015+0_RECOVERY_6.0
LGH818P	LGH818AT-00-V10c-GLOBAL-COM-NOV-17-2015+0_RECOVERY_5.1	LGH818AT-00-V20a-GLOBAL-COM-DEC-08-2015+0_RECOVERY_6.0
LGH819	H81910c_RECOVERY_5.1	
LGV32	LGV3210o_RECOVERY_5.1	

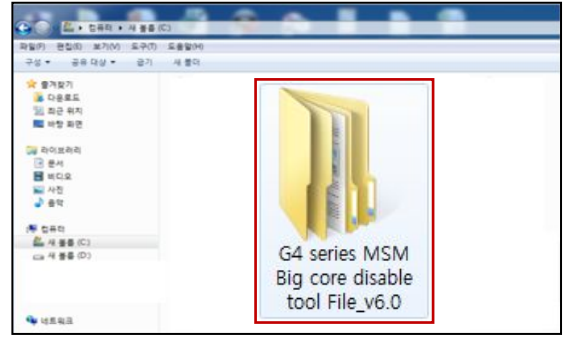
◆ G4 series MSM Big core disable tool Install Procedure [Case 1]



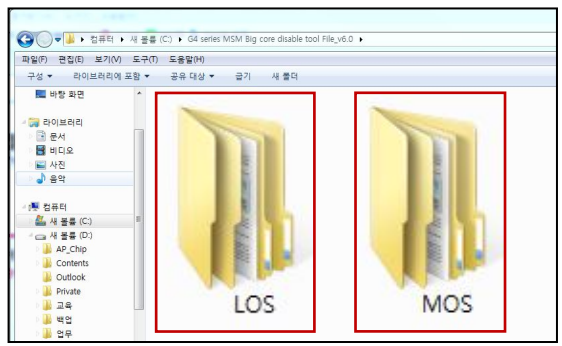
• Delete the tot file folder on C drive



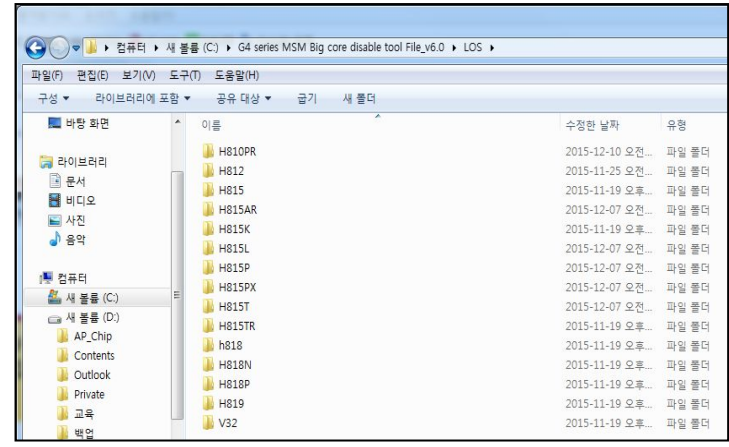
• Install Only tot file folder



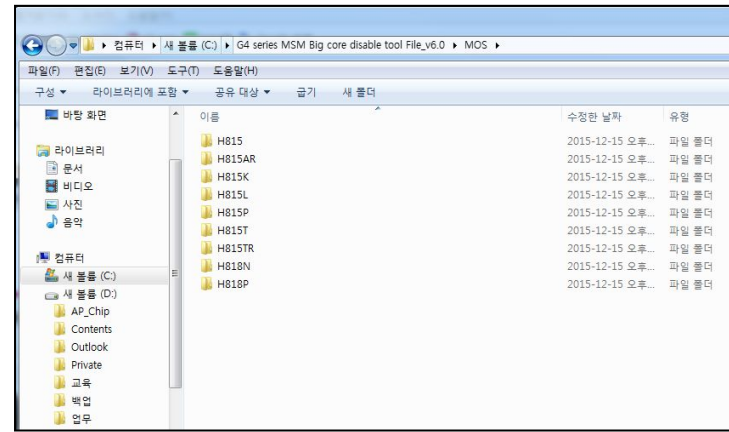
• New tot file folder



• LOS & MOS folder



• LOS tot file

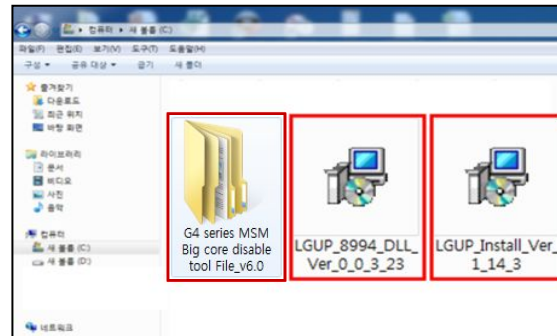


• MOS tot file

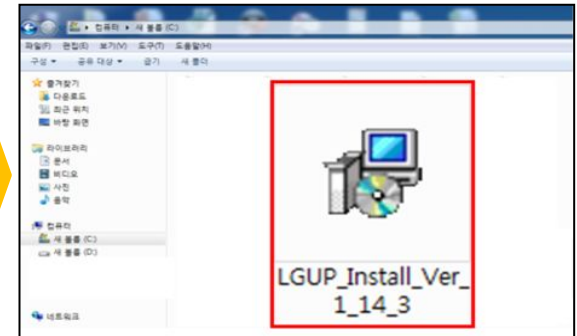
◆ G4 series MSM Big core disable tool Install Procedure [Case 2]



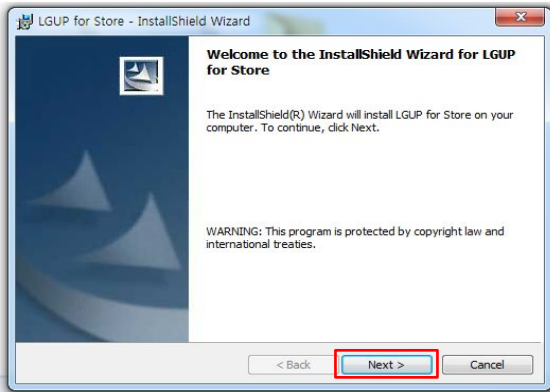
• Install zip file



• Unzip on C drive



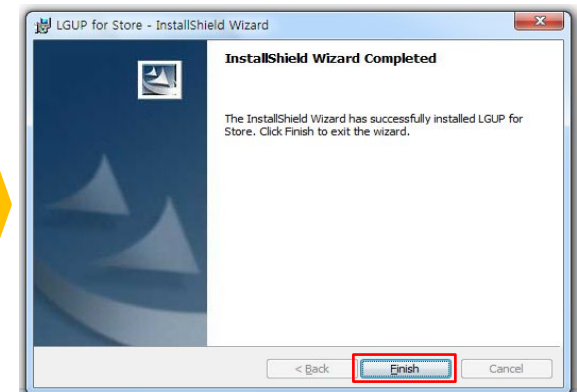
• Recovery tool Install file click.



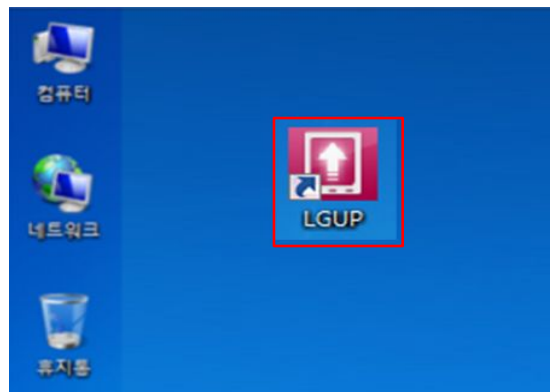
• "Next" Click.



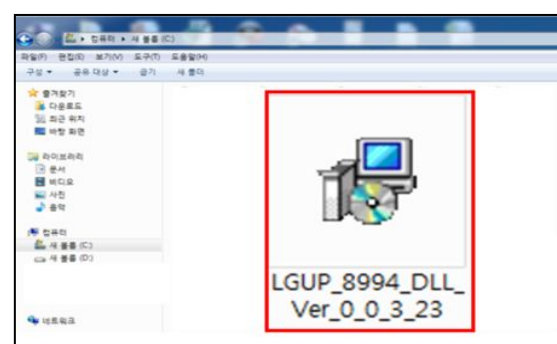
• I accept~ Click & "Next" Click.



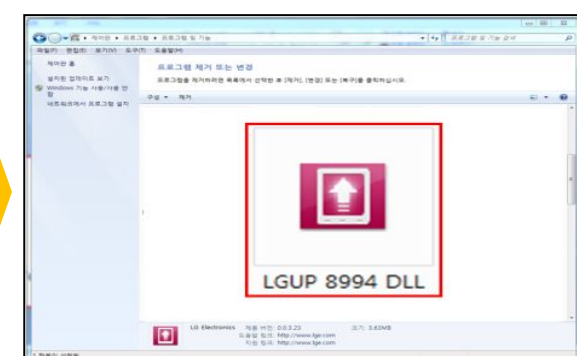
• "Finish" Click



• LGUP Program Install Complete.



• DLL Install file Double click.



• DLL file Install Complete.
(You can check "Control Panel")

Service Guide

G4 series MSM Ball crack repair Guide

Model	G4 series	Revision	Rev 7.0	Date	23 th Dec 2015	Country	Global	Buyer	All	Type	H/W
Contents	<input type="checkbox"/> Service Information <input checked="" type="checkbox"/> Guide <input type="checkbox"/> Notification					Target	<input checked="" type="checkbox"/> BRC <input type="checkbox"/> DSC <input type="checkbox"/> ASC <input type="checkbox"/> CIC				

Information Guide

※ This document must be translated to language of each country

1. Customer Symptom

- In case of Auto Power off symptom, please check either this is related with Ball crack issue or not in advance. (refer to "How to know Ball Crack")

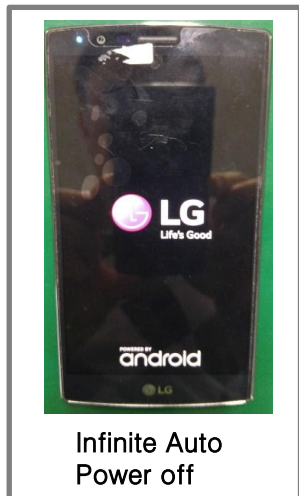
2. Repair Guide

- In case of Ball Crack issue, please replace eMMC, MSM with new Parts.

3. Notice

- Please add "MSM Ball crack" in the remarks column.

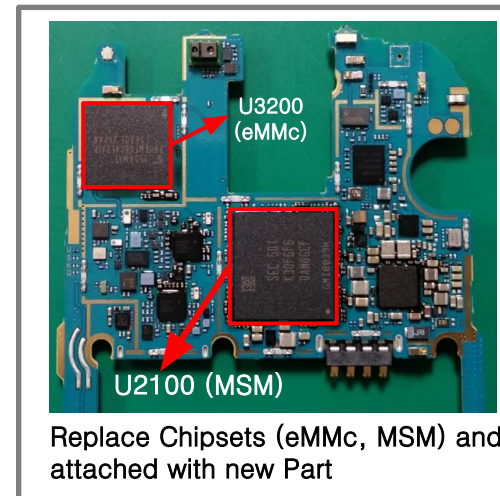
Detail Symptom



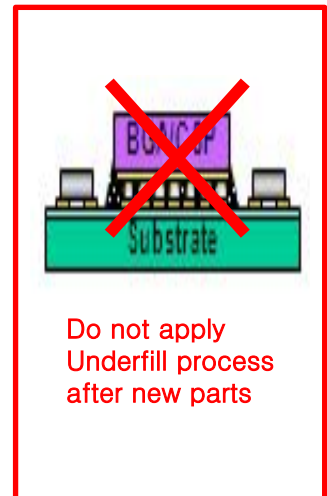
How to know Ball Crack



Repair method



※ Important



Service Guide

(modify) G4 series MSM Ball crack repair Guide

Model	G4 series	Revision	Rev 7.1	Date	23 th Dec 2015	Country	Global	Buyer	All	Type	H/W
Contents	<input type="checkbox"/> Service Information <input checked="" type="checkbox"/> Guide <input type="checkbox"/> Notification					Target	<input checked="" type="checkbox"/> BRC <input type="checkbox"/> DSC <input type="checkbox"/> ASC <input type="checkbox"/> CIC				
Information Guide											

※ This document must be translated to language of each country

1. Customer Symptom

- In case of Auto Power off symptom, please check either this is related with Ball crack issue or not in advance. (refer to "How to know Ball Crack")

2. Repair Guide

- In case of Ball Crack issue, please replace eMMC, MSM with new Parts.

3. Notice

- Please add "MSM Ball crack" in the remarks column.

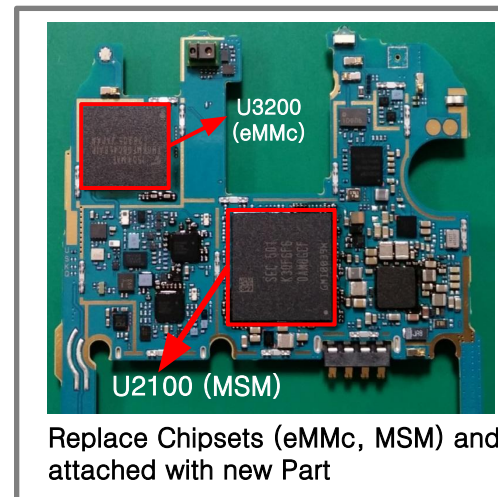
Detail Symptom



How to know Ball Crack



Repair method



※ Important



(MOS Add) G4 series MSM Big core disable tool Guide

Model	G4 series	Revision	Rev 8.0	Date	24 th Dec 2015	Country	Global	Buyer	All (Except USA)	Type	S/W
Contents	<input checked="" type="checkbox"/> Service Information <input type="checkbox"/> Guide <input type="checkbox"/> Notification					Target	<input type="checkbox"/> BRC <input checked="" type="checkbox"/> DSC <input checked="" type="checkbox"/> ASC <input type="checkbox"/> CIC				
Information Guide											

✳ This document must be translated to language of each country

1. Purpose

- Sometimes G4 series phone happens "Infinite loop Auto power off" issue.
- if phone's symptom is "Infinite loop Auto power off", you should Change a Main board.
- if customer wants to Data Back-up, you should use this Recovery tool.
- Please Data Back-up proceed after Recovery complete.
- This Phone (Recovery was completed) is abnormal Main Board.
- Please don't reuse the Main Board.

2. Installation Prodre

- [Case 1] if there is Previously tot file folder.
: Delete old tot file folder, Download New tot file folder on C drive
- [Case 2] if there is no a Previously tot file folder.
: Download New tot file folder on C drive
- if you use the LGUP tool, you should check "Model name" "Android OS version & "tot file name".
(Please refer right side table)
- LGUP, DLL file is not changed.

3. Notice

- if you have checked the other symptom Power Problem (Except "Infinite loop Auto power off"), shouldn't use this tool.
- GSFS Customer Symptom code : "Auto Power off"

Model	tot file Name	
	Android OS : LOS	Android OS : MOS
LGH810PR	LGH810AT-00-V10a-GLOBAL-COM-DEC-08-2015+0_RECOVERY_5.1	LGH810AT-00-V19t-GLOBAL-COM-DEC-15-2015+7
LGH812	H81210h_recovery_RECOVERY_5.1	
LGH815	LGH815AT-00-V10g-GLOBAL-COM-NOV-18-2015+0_RECOVERY_5.1	LGH815AT-00-V20a-GLOBAL-COM-NOV-02-2015+00_RECOVERY_6.0
LGH815AR	LGH815AT-00-V10g-GLOBAL-COM-NOV-18-2015+0_RECOVERY_5.1	LGH815AT-00-V20a-GLOBAL-COM-NOV-18-2015+0_RECOVERY_6.0
LGH815K	LGH815AT-00-V10g-GLOBAL-COM-NOV-18-2015+0_RECOVERY_5.1	LGH815AT-00-V20a-GLOBAL-COM-NOV-02-2015+00_RECOVERY_6.0
LGH815L	LGH815AT-00-V10g-GLOBAL-COM-NOV-18-2015+0_RECOVERY_5.1	LGH815AT-00-V20a-GLOBAL-COM-NOV-02-2015+00_RECOVERY_6.0
LGH815P	LGH815AT-00-V10g-GLOBAL-COM-NOV-18-2015+0_RECOVERY_5.1	LGH815AT-00-V20a-GLOBAL-COM-NOV-18-2015+0_RECOVERY_6.0
LGH815PX	LGH815AT-00-V10g-GLOBAL-COM-NOV-18-2015+0_RECOVERY_5.1	
LGH815T	LGH815AT-00-V10g-GLOBAL-COM-NOV-18-2015+0_RECOVERY_5.1	LGH815AT-00-V20a-GLOBAL-COM-NOV-02-2015+00_RECOVERY_6.0
LGH815TR	LGH815AT-00-V10g-GLOBAL-COM-NOV-18-2015+0_RECOVERY_5.1	LGH815AT-00-V20a-GLOBAL-COM-NOV-02-2015+00_RECOVERY_6.0
LGH818	H81810c_RECOVERY_5.1	
LGH818N	LGH818AT-00-V10c-GLOBAL-COM-NOV-17-2015+0_RECOVERY_5.1	LGH818AT-00-V20a-GLOBAL-COM-DEC-08-2015+0_RECOVERY_6.0
LGH818P	LGH818AT-00-V10c-GLOBAL-COM-NOV-17-2015+0_RECOVERY_5.1	LGH818AT-00-V20a-GLOBAL-COM-DEC-08-2015+0_RECOVERY_6.0
LGH819	H81910c_RECOVERY_5.1	
LGV32	LGV3210o_RECOVERY_5.1	