

Borehole geophysics

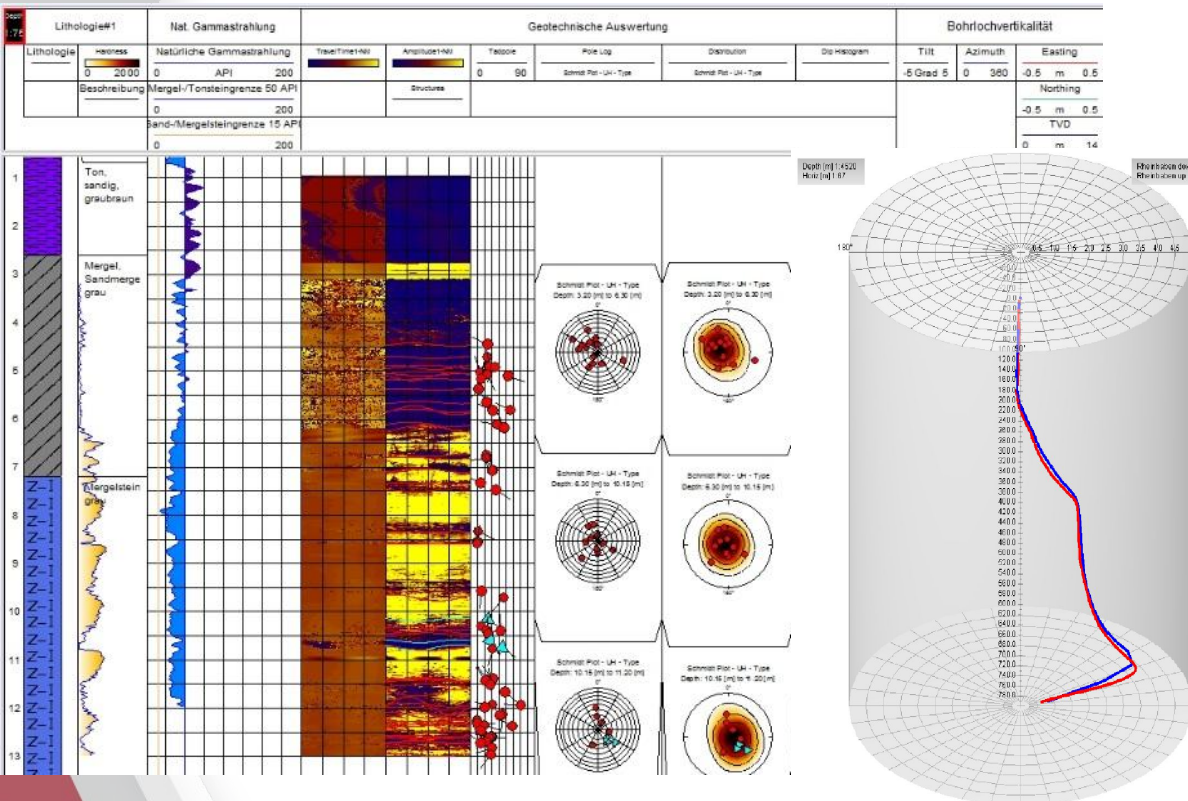
- Wire line
- Exploration
- Geotechnical investigations
- Hydrogeology
- Mining
- Inspection of old mining
- Inspection of radioactive waste repositories



Geotechnical Investigations

- Caliper Log (3 arm, 4 arm, 3D acoustic)
- **Natural Gamma-Ray Logging (GR)**
- Spectral Gamma-Ray Logging (GR.S)
- Pulsed Neutron-Neutron (INN)
- Density Log (GG.D)
- Full Wave Sonic Log (FWS)
- **Conventional and Focused Resistivity Log (FEL, DLL)**
- Self Potential (SP)
- Induction Log (DIL)
- **Acoustic Borehole Scanner (ABI 40, FAC)**
- **Optic Borehole Scanner (OBI, OPTV)**
- Magnetic Suszeptibility (Mag Sus)
- **Deviation of Boreholes (Magnetic or Gyro Sensors)**
- **2D, 3D RADAR and RADAR Tomography**

Geotechnical Investigations



- Borehole deviation
- Dip and dip direction of bedding, joints, fault zones and outbursts
- Assignment of joint structures
- Lithological assignment
- Mechanical parameters of rocks
- Field stress orientation
- Rock mass rating
- Redevelopment of old mining fields
- Repository exploration

Work Stages

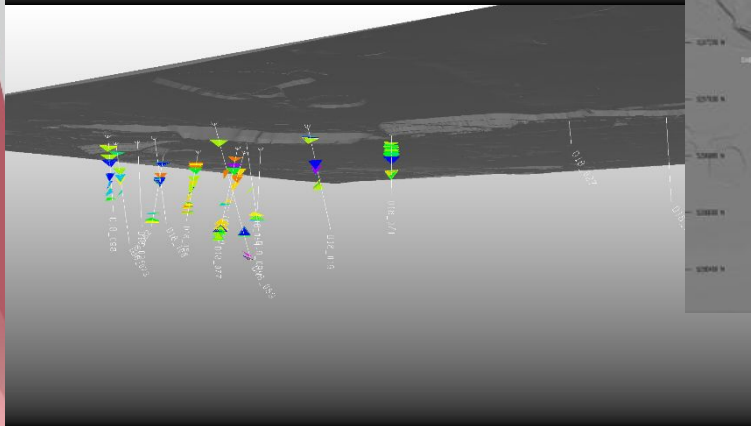
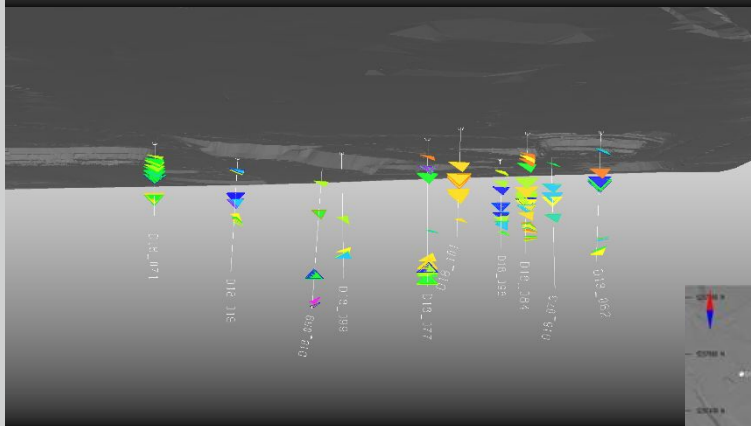
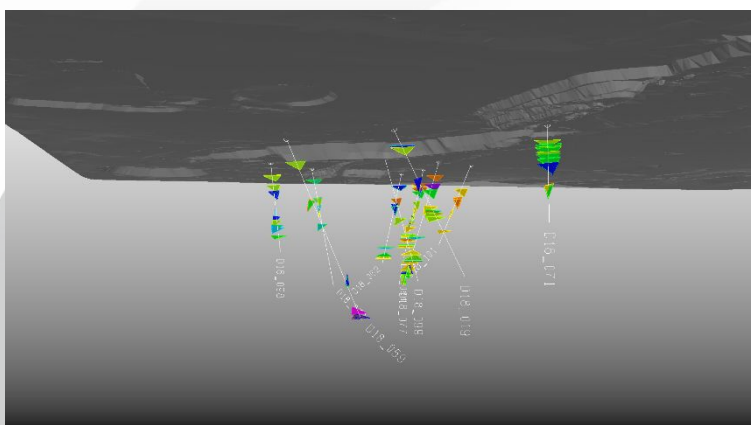
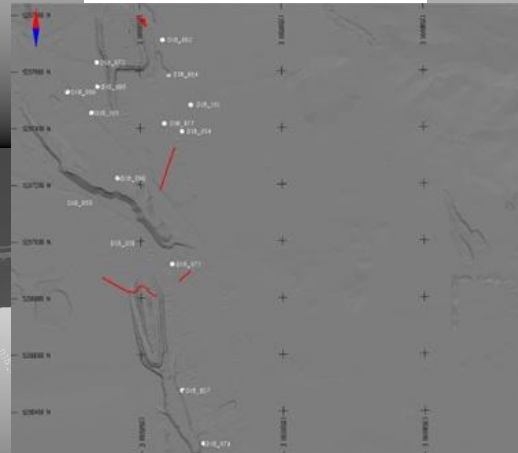
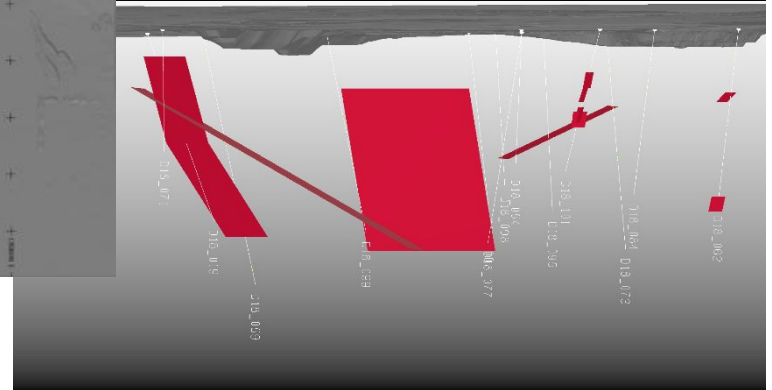
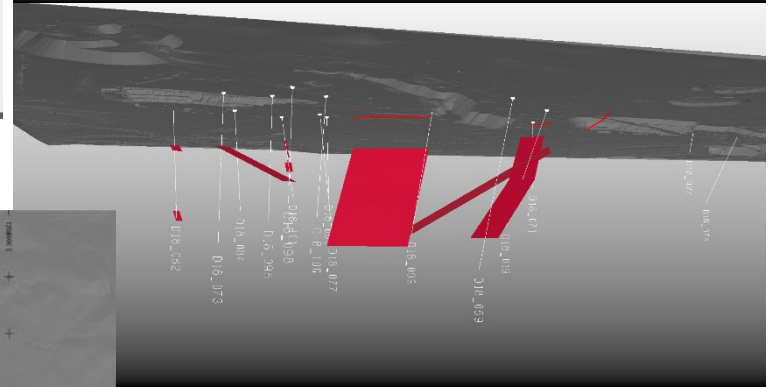
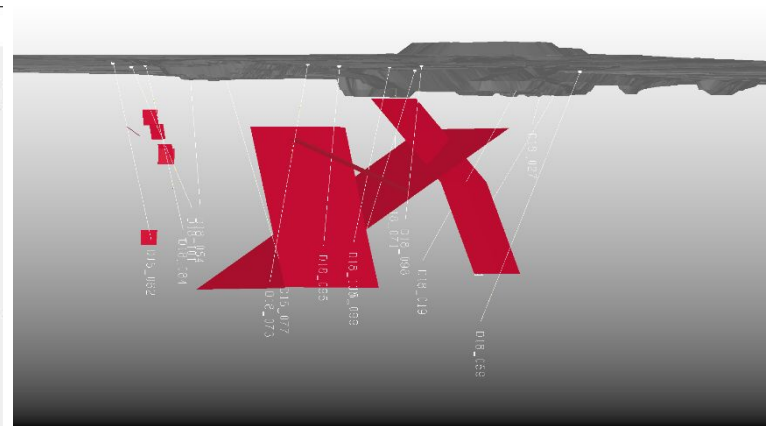
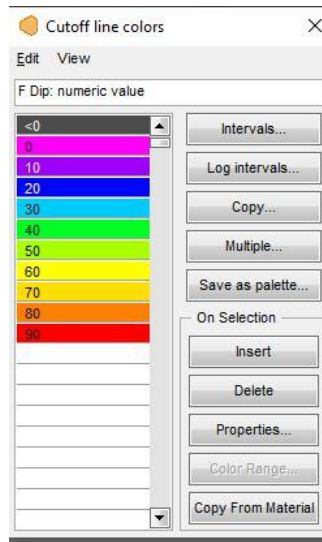
- Data from the client: counter maps, coordinates of the drill holes, lithological core logs, core fotos.
- Survey of several boreholes with: acoustic and optic scanner, gamma ray and dual latero log.
- Analysis and interpretation of:
 - Orientation of the structures,
 - Classification of the structures (bedding, joints, faults),
 - Classification of the rock mass (RQD),
 - Deviation of the boreholes,
 - Lithological assignment
- Modelling of the general structures and local weakness zones
- Report

Field Survey

- One month in the field
- One or two DMT staff on site
- Mostly central Asia



Structural Modelling



Thank you for your attention

Dr. Godrat Rafat, Prof. Vladimir Mansurov, Ivo Kerošević M. Sc., Dipl. Geol. Ming Han Tse

Geophysikalische Bohrlochmessungen, Strahlenschutz, Exploration

+49 201 172 – 1769; Mob.: +49 171 225 80 35

Ivo.Kerosevic@dmt-group.com

RAKGEO-Rafat@t-online.de

DMT GmbH & Co. KG, Am TÜV 1, 45307 Essen