



拆卸原厂支架安装专用支架，使用专用螺丝固定(左右方法相同)

Disassemble the original bracket to install the special bracket, use special screws to fix (the left and right methods are the same)



拆卸原厂支架安装专用支架，使用专用螺丝固定(左右方法相同)

Disassemble the original bracket to install the special bracket, use special screws to fix (the left and right methods are the same)



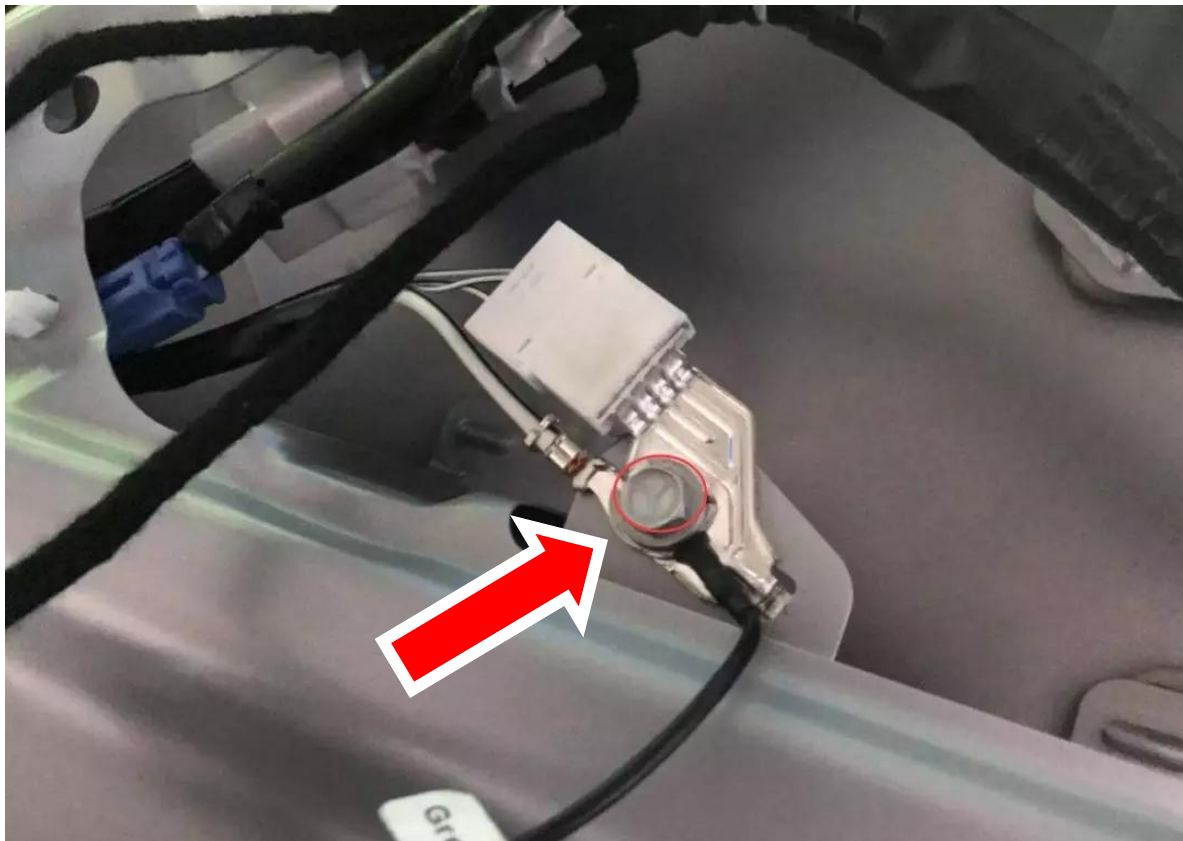
霍尔线从此处进入后门

The Hall line enters the back door from here



在驾驶位置控制面板下方连接电源

Connect power under driver position control panel



接地线在后门螺丝处连接

The ground wire is connected at the back door screw

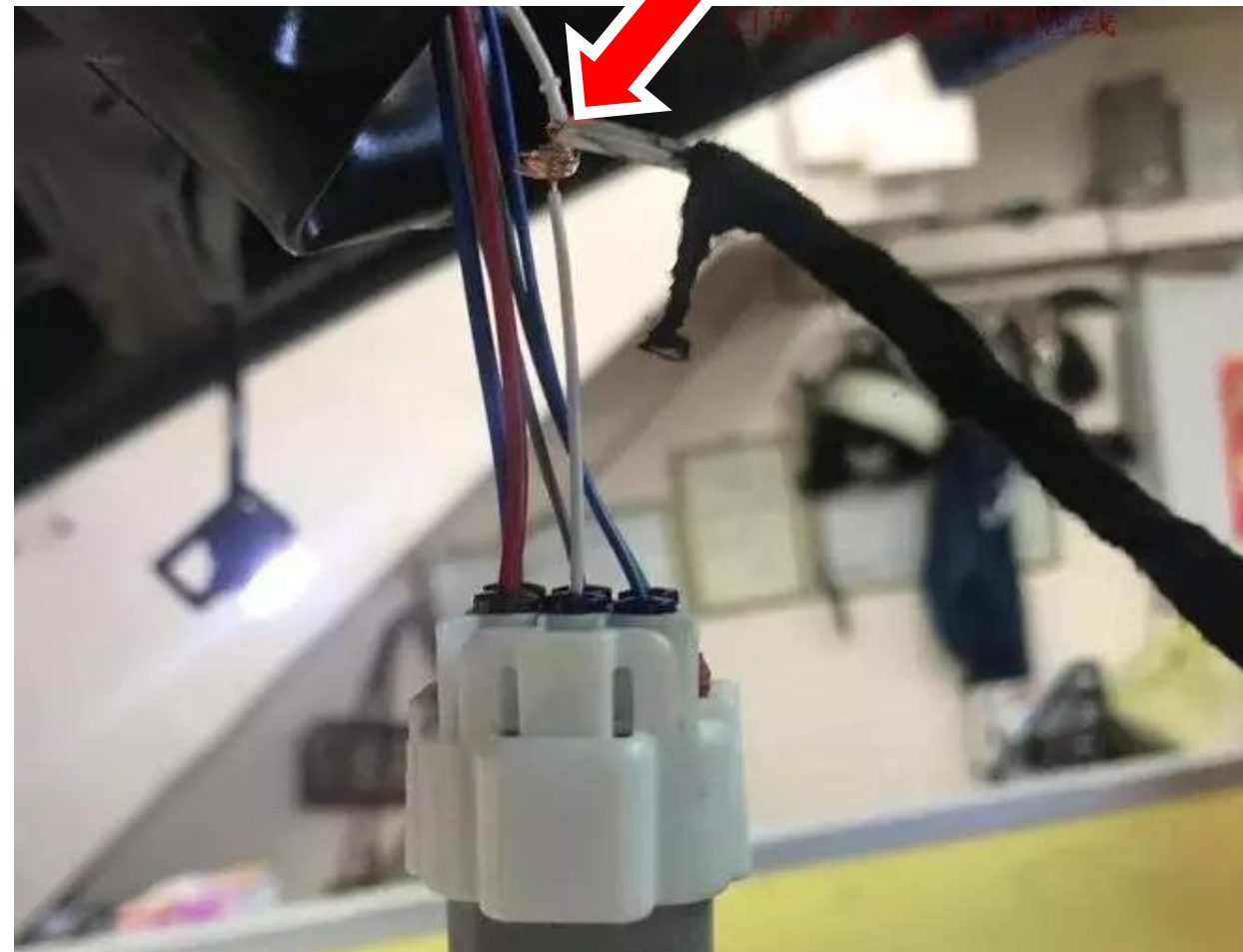


三通转换连接插头与原车插头连接

Three-way conversion connection plug and original car plug connection



寻找到个这个插头
Find this plug



电动尾门的到位线连接这个插头的白色线
The in place line of the electric tailgate is connected to the white line of this plug



拆卸原车锁

Remove the original car lock



拆下原车钢丝，安装电动尾门专用钢丝
Remove the original car wire and install electric tailgate wire



在原车锁上面安装电动尾门专用钢丝，钢丝卡入锁内
Install special wire for electric tailgate on the original car lock, and the wire locks into the lock



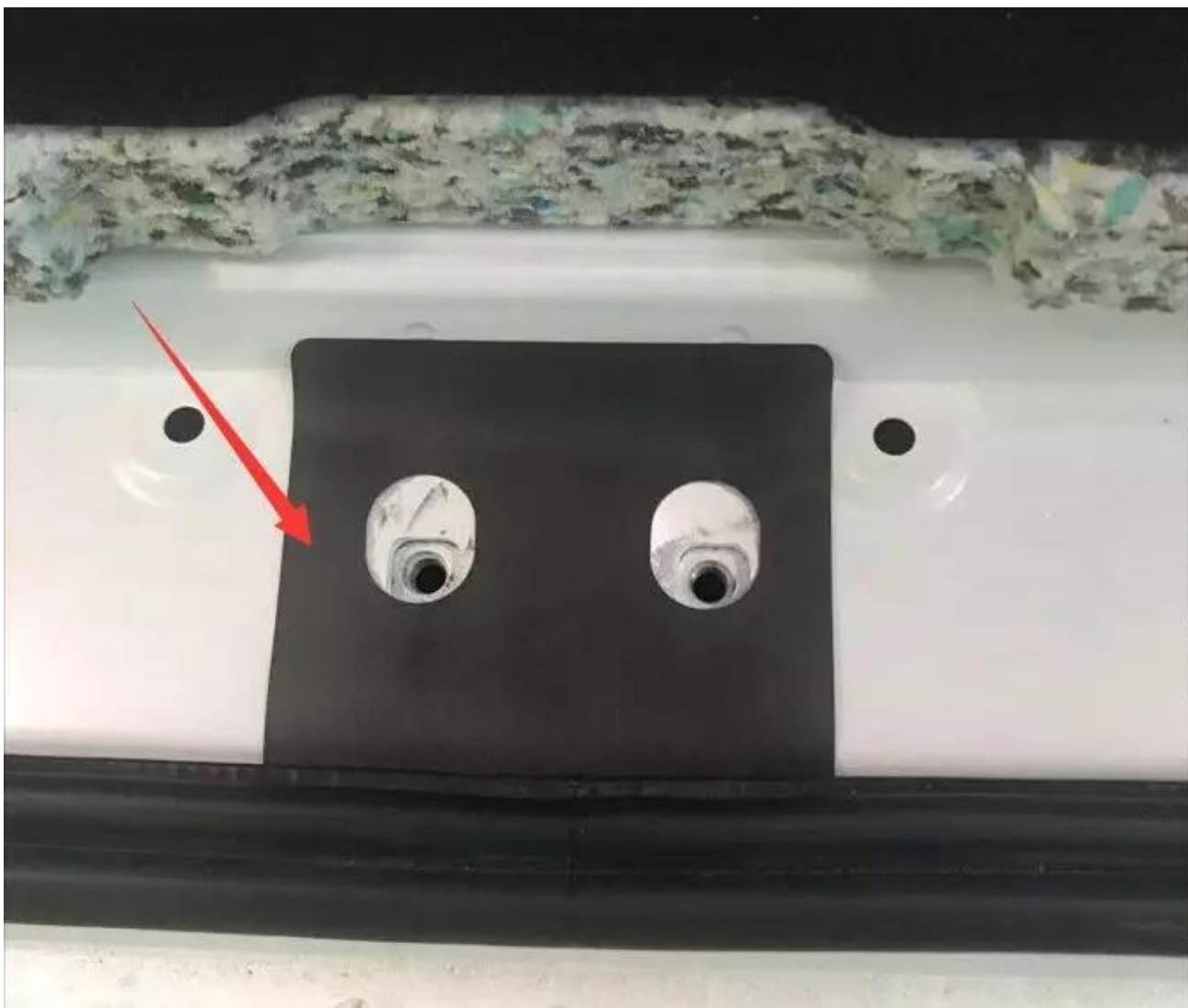
另一边在原车孔位固定执行器支架用螺丝固定
The other side fixes the actuator bracket in the original car hole with screws



安装好钢丝后，把原车锁安装到原位置，用专用螺丝固定
After installing the wire, install the original car lock to the original position and fix it with special screws



在后门此处焊接电动尾门专用把手开关，螺丝固定
Weld the electric tailgate handle switch here on the back door and fix it with screws



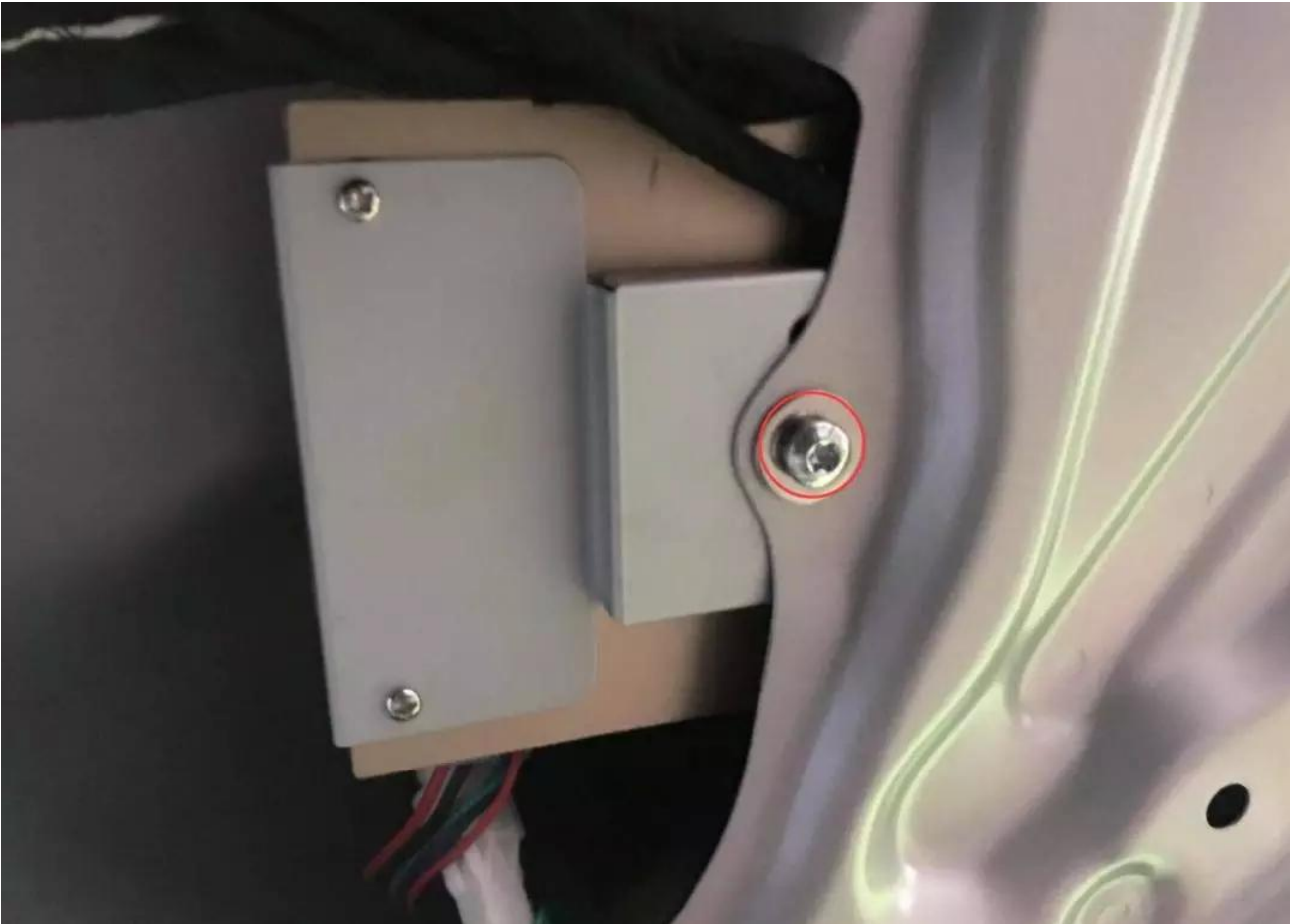
把原车的下锁环拆卸, 贴上贴纸

Remove the lower lock ring of the original car and attach a sticker



安装专用下锁环, 用螺丝固定

Install special lower locking ring and fix with screws



控制盒固定在此处
Control box is fixed here



安装前开关按钮
Switch button before installation



后门安装电动尾门关闭按钮
Install electric tailgate close button on back door



测试后, 复原
After testing, recover

Height Setting Method of Electric Tail Door 电动尾门的高度设定方法



Manually push the tailgate to the desired height, press the button installed inside the tailgate, and the “DI” will sound for 3-5 seconds, then press the tailgate button again, the tailgate will automatically close and let the tailgate The door is closed and a “DI” sound appears, indicating that the rear door height setting is completed.

手动将后挡板推至所需的高度，按下后挡板内安装的按钮，“DI”将响起3-5秒，然后再次按后挡板按钮，后挡板将自动关闭并让后挡板关闭并出现“DI”声，表示后门高度设置已完成。

**It is necessary to check before the plastic plate of the tailgate is restored.
恢复后挡板的塑料板之前，必须进行检查。**

- | | |
|---|------------------------------------|
| 1. Is it replaced with a special screw as required? | 1. 是否根据需要用专用螺丝代替了？ |
| 2. Is the screw installed correctly? | 2. 螺丝是否正确安装？ |
| 3. Is the plug fully connected? | 3. 插头是否已完全连接？ |
| 4. Whether the electric suction lock can work normally | 4. 电吸锁是否可以正常工作 |
| 5. Whether the wire is scratched when it is inserted | 5. 电线插入时是否被划伤 |
| 6. Whether the remote control, front switch button, and rear door button can control the electric tailgate to open or close | 6. 遥控器，前开关按钮和后门按钮是否可以控制电动后挡板的打开或关闭 |