



DEUTSCH
ALPHABET

Aa *Aa*

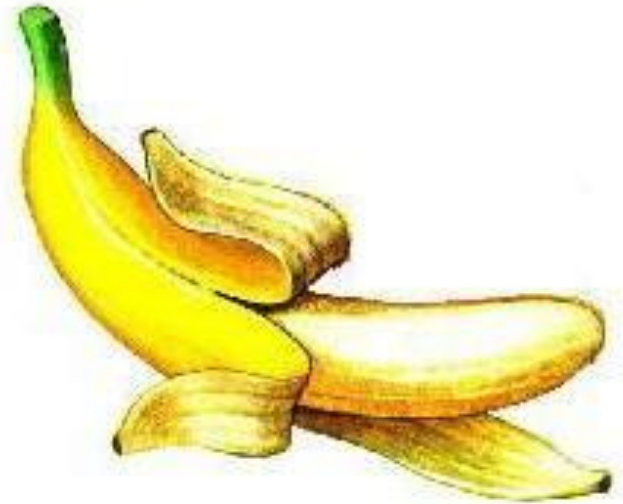
[a] [a:]



Auto, Ananas, Aquarium

Bb Bb

[a] [a:]



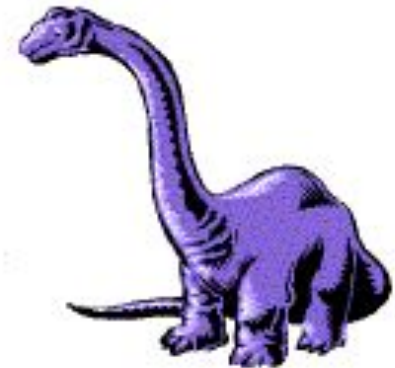
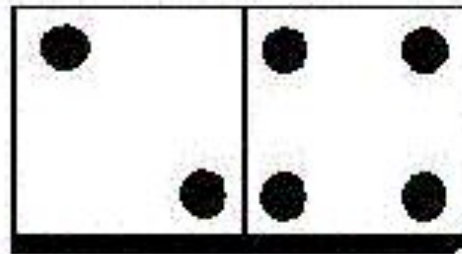
*Burantino, Barometer,
Banane*

Cc Cc



Vitamin C

Dd *Dd*



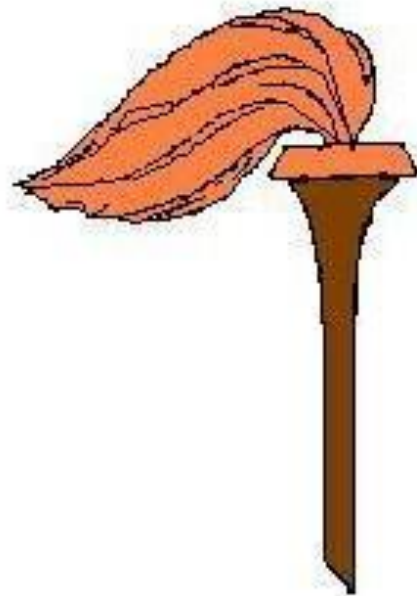
*Delfin, Domino,
Dinosaurier*

Ee *Ee*



Etagere

Ff **Ff**



Fotoapparat, Fackel

Gg Gg



Gitarre, Globus

Hh *Hh*



Hockey

li Ji



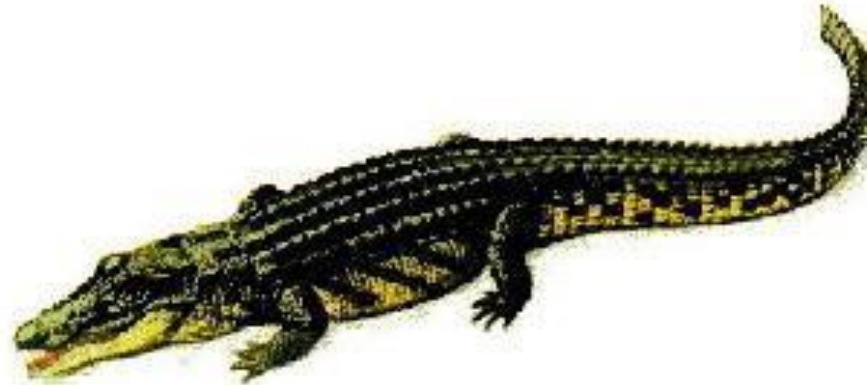
Instrument, Indianer

Jj *Jj*



Joghurt

Kk *Kk*



Karlsson, Karte, Krokodil

Ll *Ll*



Lampe, Löwe

Mm Mm



*Maske, Matrjoschka,
Mikrofon*

Nn

Nn



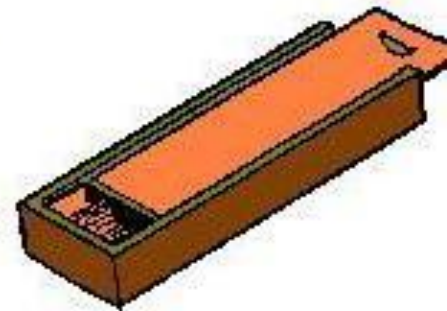
Note, Neger

Ob Oo



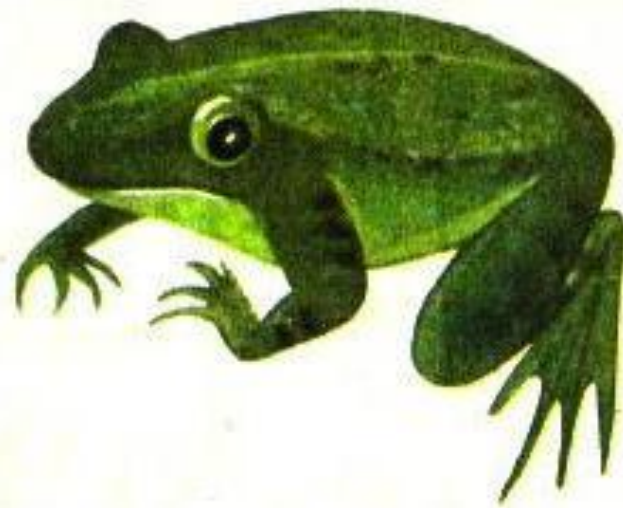
Obelisk, Orden

Pp Pp



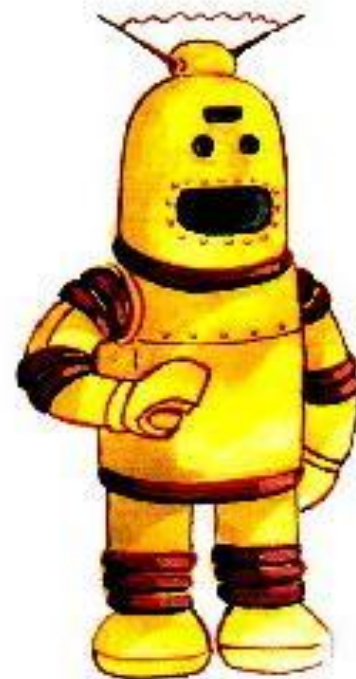
*Papagei, Palme, Paket,
Penal*

Qq Qq



Quadrat, quak

Rr Rr



***Radio, Rakete, Rose,
Roboter***

Ss Ss



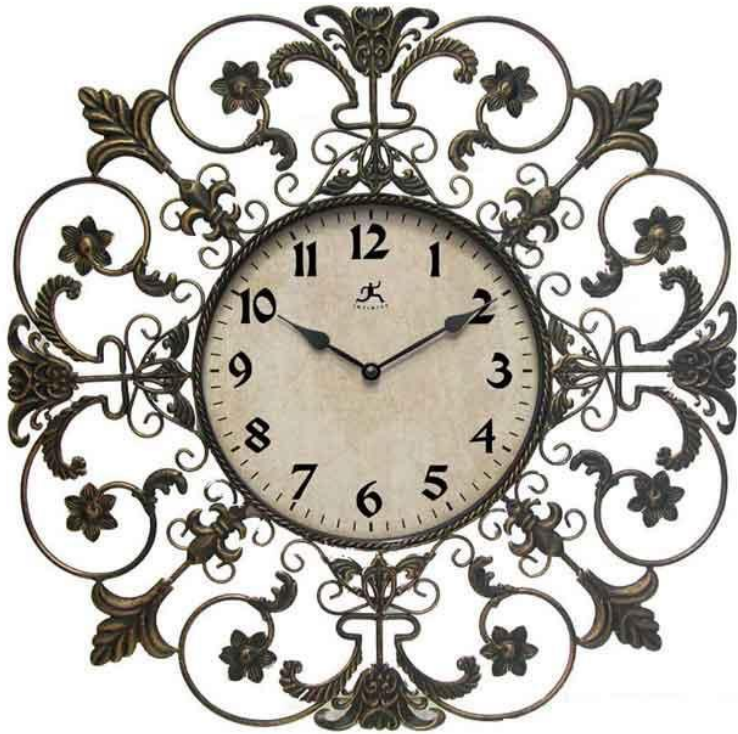
Skelett

Tt Tt



*Telefon, Thermometer,
Torte*

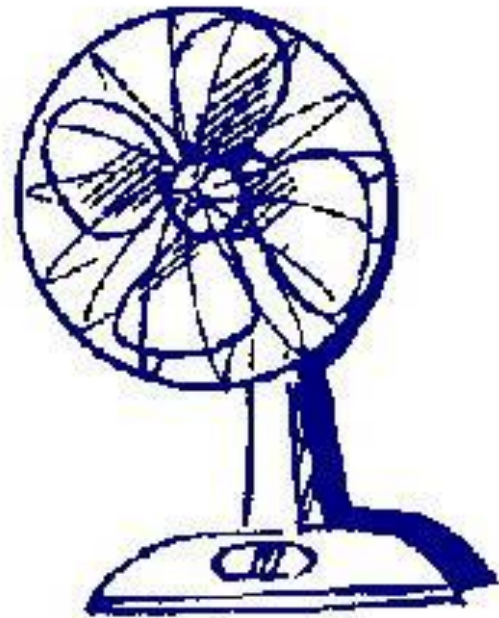
Uu *Uu*



Uhr

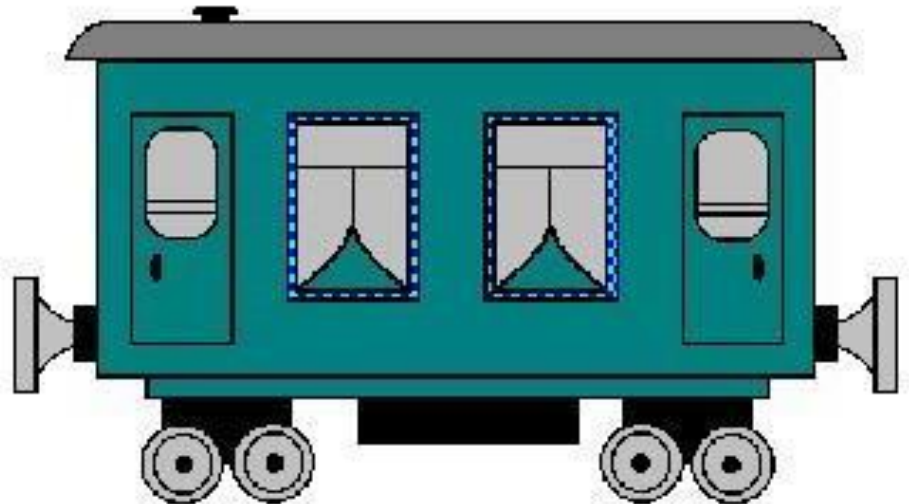
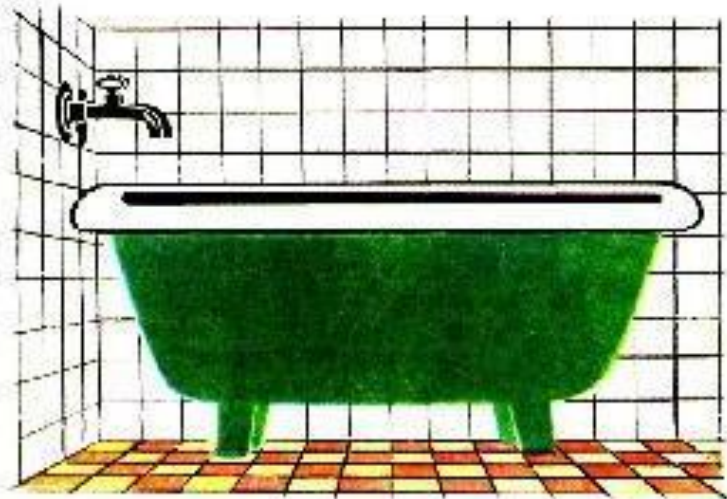
Vv Vv

4



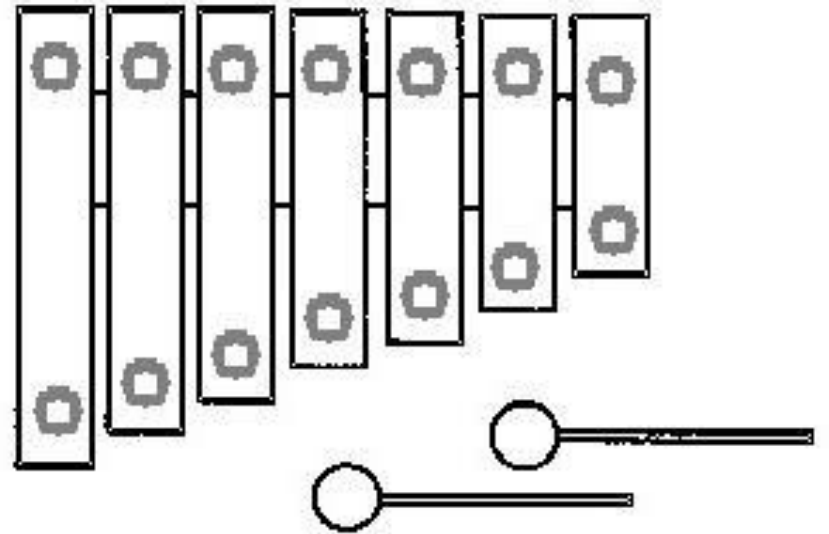
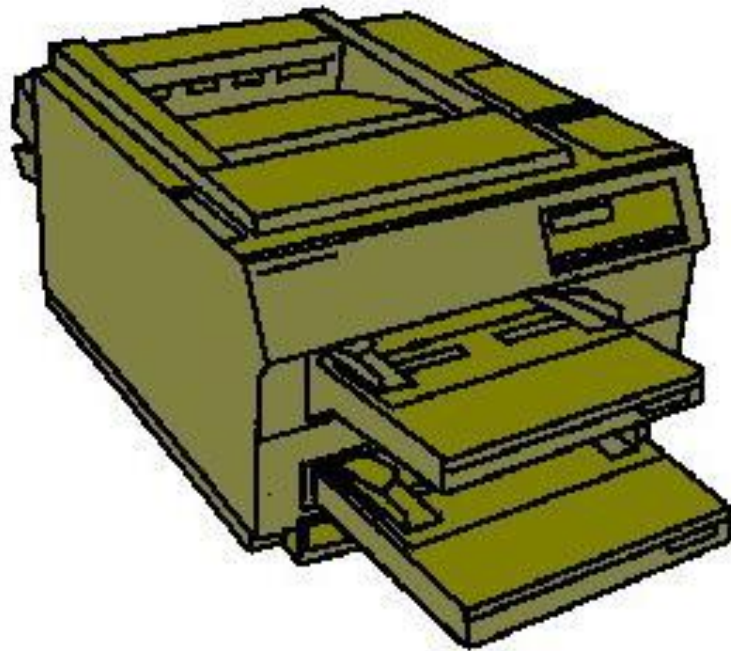
vier, Vase, Ventilator

Ww *Ww*



Wanne, Waggon

Xx Xx



Xerox, Xylofon

Yy *Yy*

Zz *Zz*



Zirkel