

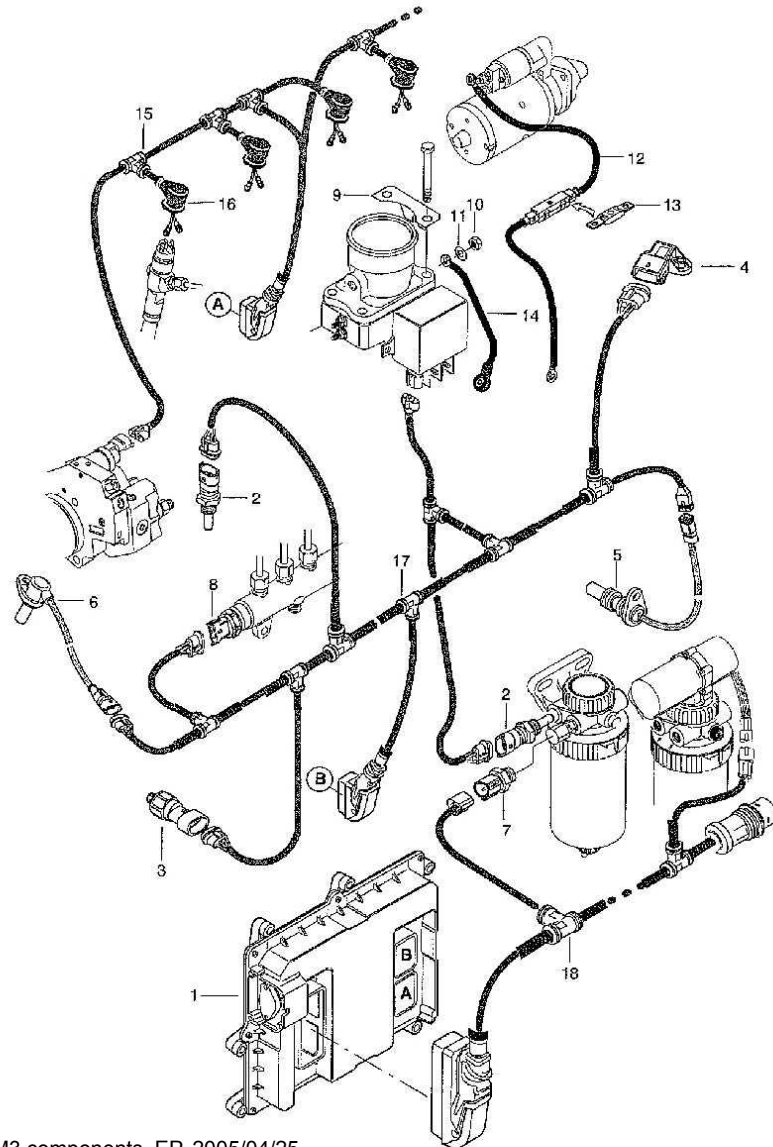
# Sisu Diesel's Engine training

## CONFIDENTIAL INFORMATION

Information in this material can change without notice  
from Sisu Diesel



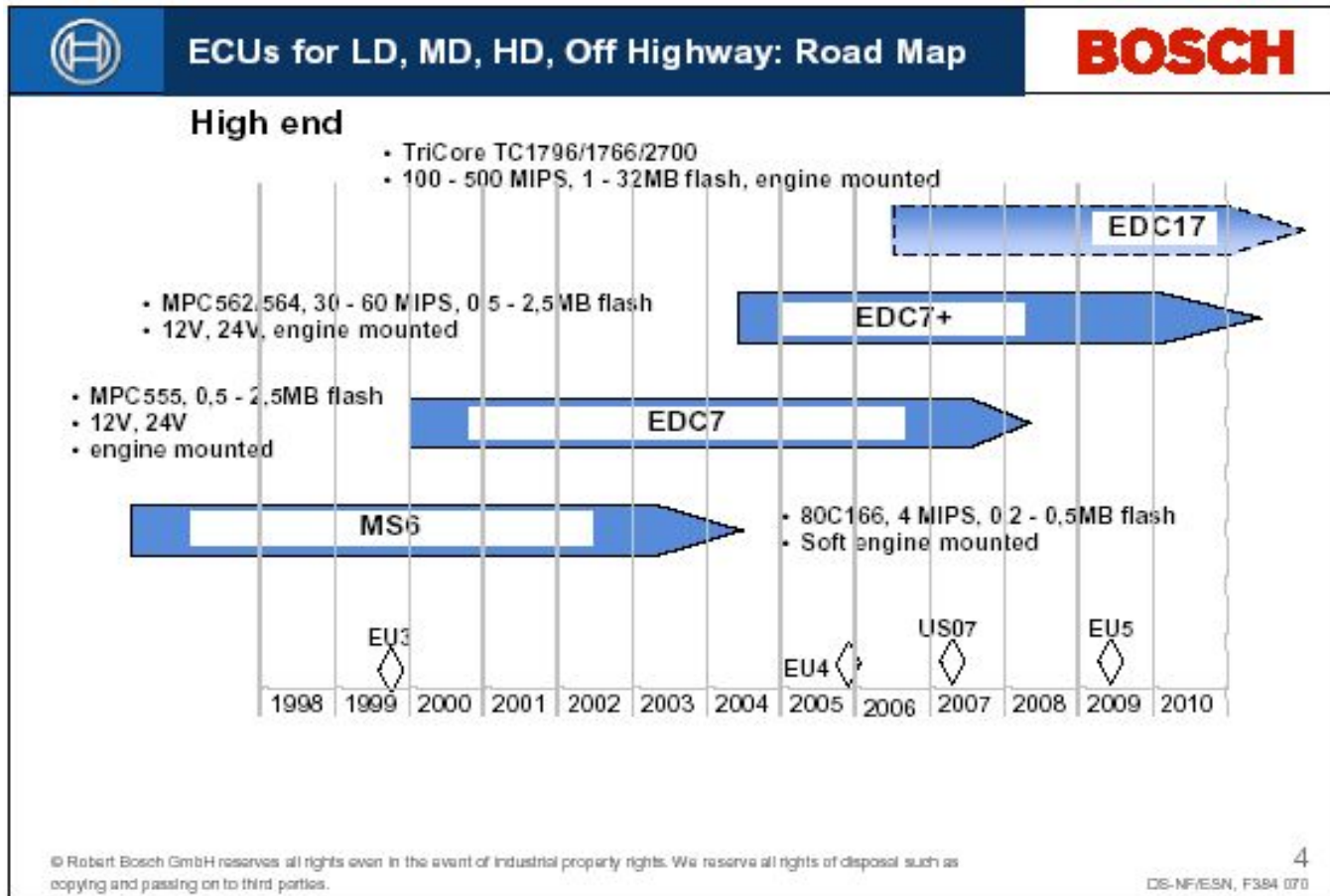
# EEM3 components



1. Control unit
2. Temperature sensor
3. Oil pressure sensor
4. Boost pressure sensor
5. Speed sensor (crankshaft)
6. Speed sensor (camshaft)
7. Feed pressure switch
8. High pressure sensor'
9. Earth wire
13. Fuse
15. Wiring set

# Electronic Control Unit EEM3

# Bosch EDC7UC31 ECU



# Temperature sensor



## KT- and KTY-Series Temperature Sensors

**Stainless Steel Housing,  
BSS303 (equiv. DIN 1.4305)**

**KTY 19-6M/Z**

Plug-in socket

SW17

SW17

12

17

5

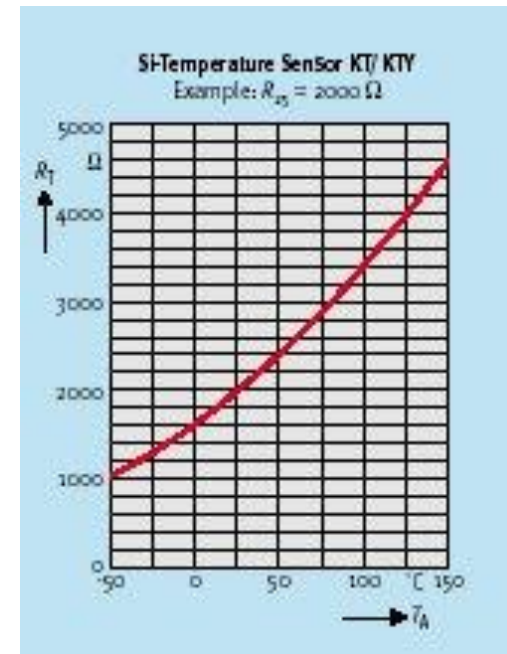
Spade terminals  
A2.8x0.8  
DIN 46244  
without hole

GMX05639

Weight approx. 20 g

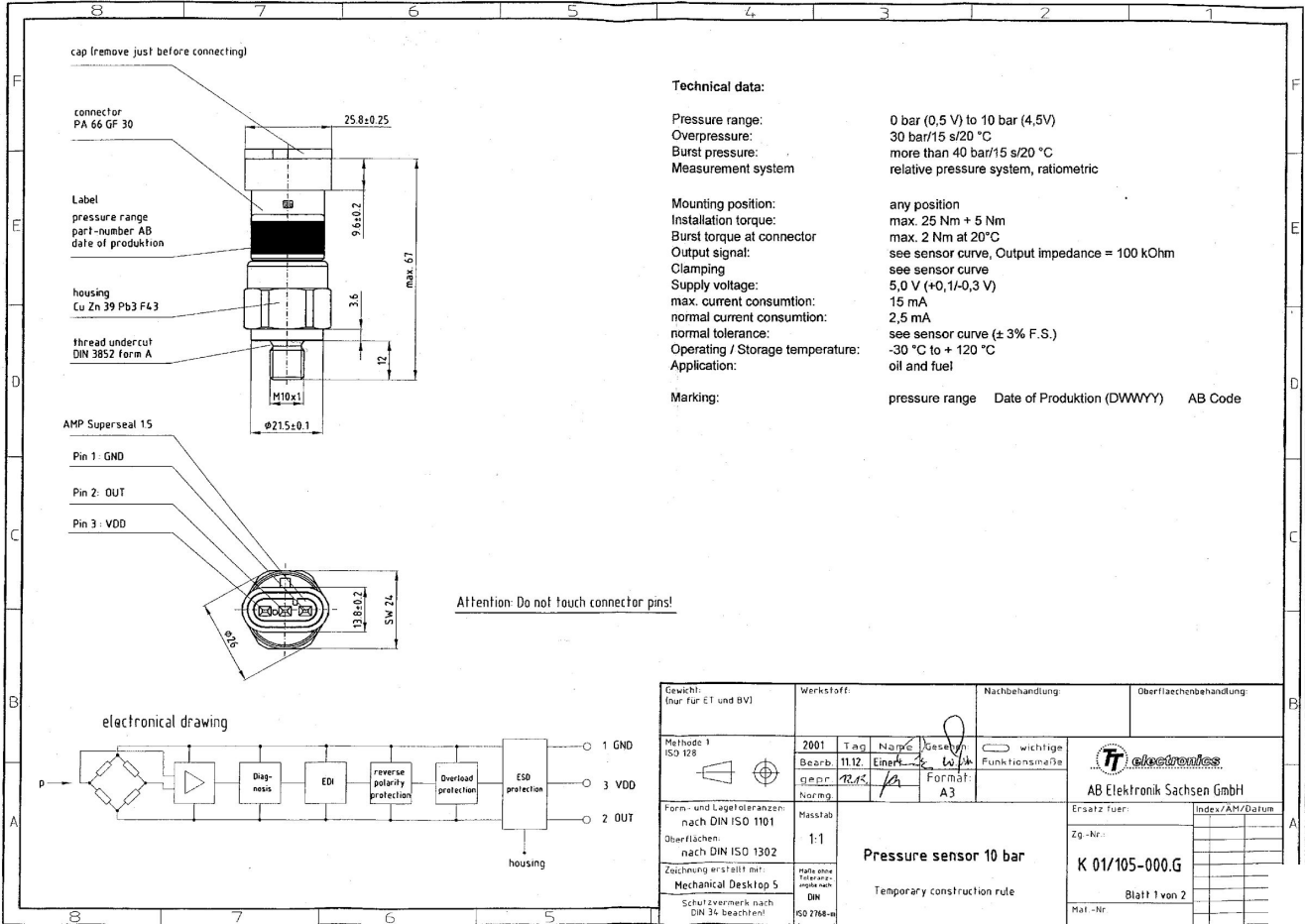
EEM3 components, EP. 2005/05/03

Same sensor in EEM2/ EEM3



**SisuDiesel**

# Oil pressure sensor

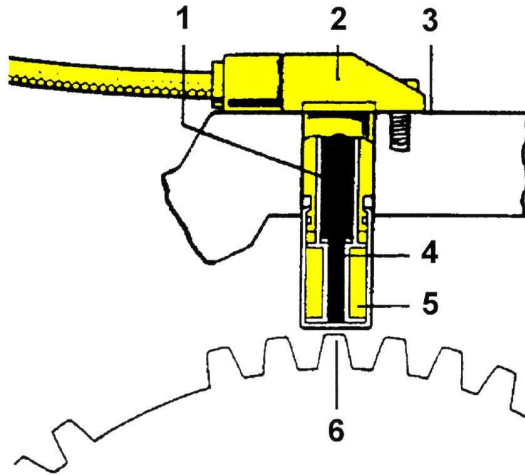


- 5 Vdc supply voltage
- Same in EEM2 / EEM3



# Boost pressure sensor

## Speed sensor (crankshaft)



- Sensor identify crankshafts rotation speed and position
- When crankshaft is rotating, teeth in trigger wheel induces alternating voltage to speed sensor and ECU define the rotation speed. The front end of tooth cause positive voltage and the rear end cause negative voltage
- 60-2 teeth on wheel. One tooth is  $3^\circ$  in crankshaft

1. Permanent magnet
2. Rotation speed- / position sensor
3. Cylinder block
4. Soft-iron core
5. Pick-up coil
6. Trigger wheel





# Speed sensor (camshaft)

- Located in timing gear housing
- 6+1 teeth in 6-cylinder engine
- 4+1 teeth in 4-cylinder engine
- Cause one signal in one work rotation

