

# FELTING

Nosyreva Anastasia

# History

8,000 years ago, people discovered the ability of wool to fall off. They used the found remains of animal hair for felting. After the domestication of small cattle, people began to use sheared animal hair for making clothes.

The first felt workshops appeared in the 16th century.

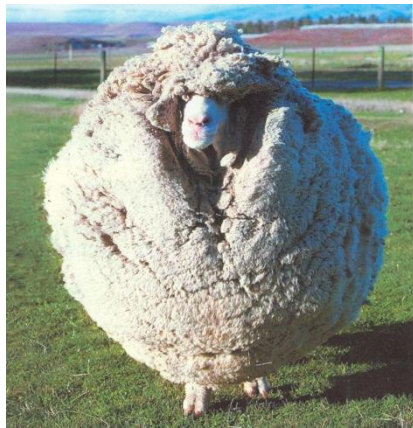
In the 19th century, people invented felting presses and felting machines. The felling occurred by squeezing and rolling the wool or by mechanical action of special needles that tangled the wool fibers.

# Wool

Wool - the hairline of animals (sheep, goats, camels, etc.). Sheep's wool is used in mass production.



# Sheeps



# Types of wool for felting

- Woolen wool(used for felting coarse products, boots, bags, ankle boots)
- Sliver (comb wool, unpainted, used to pack toys or the basis of products)
- Oches (small hairs, felting wool)
- Bleached (white wool)
- Camel
- Angora
- Alpaca

# Sheep's wool

Outer wool



Sliver



Tow



Bleached





# Technics

## Dry felting

special needle with serrations of various sizes and thicknesses



## Wet felting

felting with soap and warm water









**Thanks for attention!**

