

Backhoe Loaders

Oct 2012



Issue Date: 01-Oct-2012

Model: All BHL

Language: English (en)

Revision No. 1.0

Original Instruction

Training Material Copyright ©

For further information on the subject matter detailed within this training book, please refer to Terex United Kingdom Limited, Workshop Manuals, Operators Manuals and Product Parts Books.

Alternatively, please contact:

Customer Service Department
Terex United Kingdom Limited
ProLogis Park
Coventry, CV6 4BX
Tel; +44(0) 2476 339 660
Email. cov.servicedesk@terex.com

The Illustrations, technical information, data and descriptive text in this manual, to the best of our knowledge, were correct at the time of print. The right to change specifications, equipment and maintenance instructions at any time without notice, is reserved as part of the Terex United Kingdom Limited policy of continuous development and improvement of the product.

No part of this publication may be reproduced, transmitted in any form – electronic, mechanical, photocopying, recording, translating or by any other means without prior permission of Customer Support Department – Terex United Kingdom Limited.

Please refer to TEREX Specification Sheets or consult Factory Representatives to ensure that information is current.

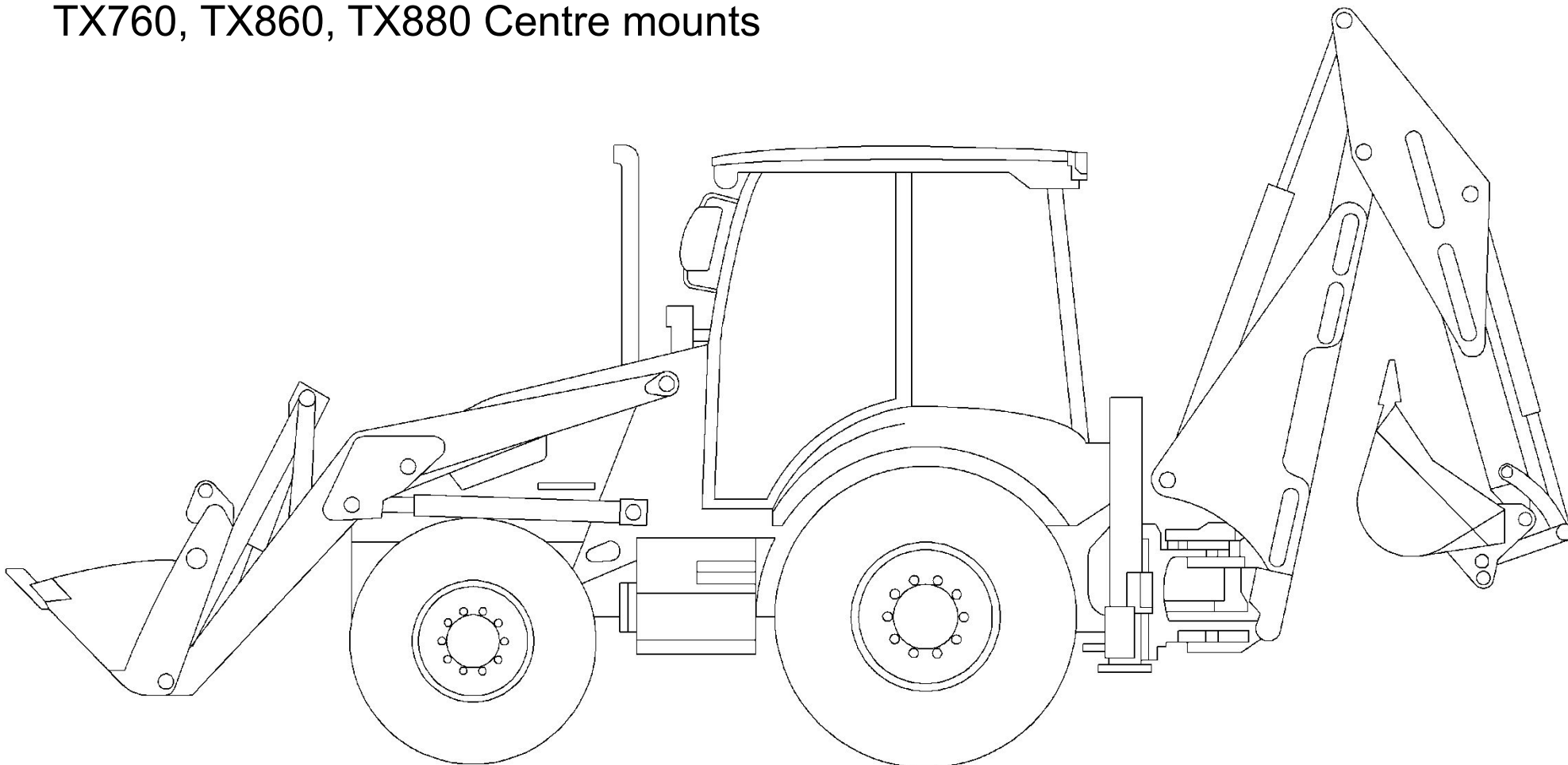
Section 1. Machine Identification

- H200 Models
- TLB840 Range Identification
- TLB890 Range Identification
- VIN Numbers – What's its all about
- Model Range Configurations

H200 Series Backhoe Loaders

820, 860, 880, 970, 980 Side shift models

TX760, TX860, TX880 Centre mounts

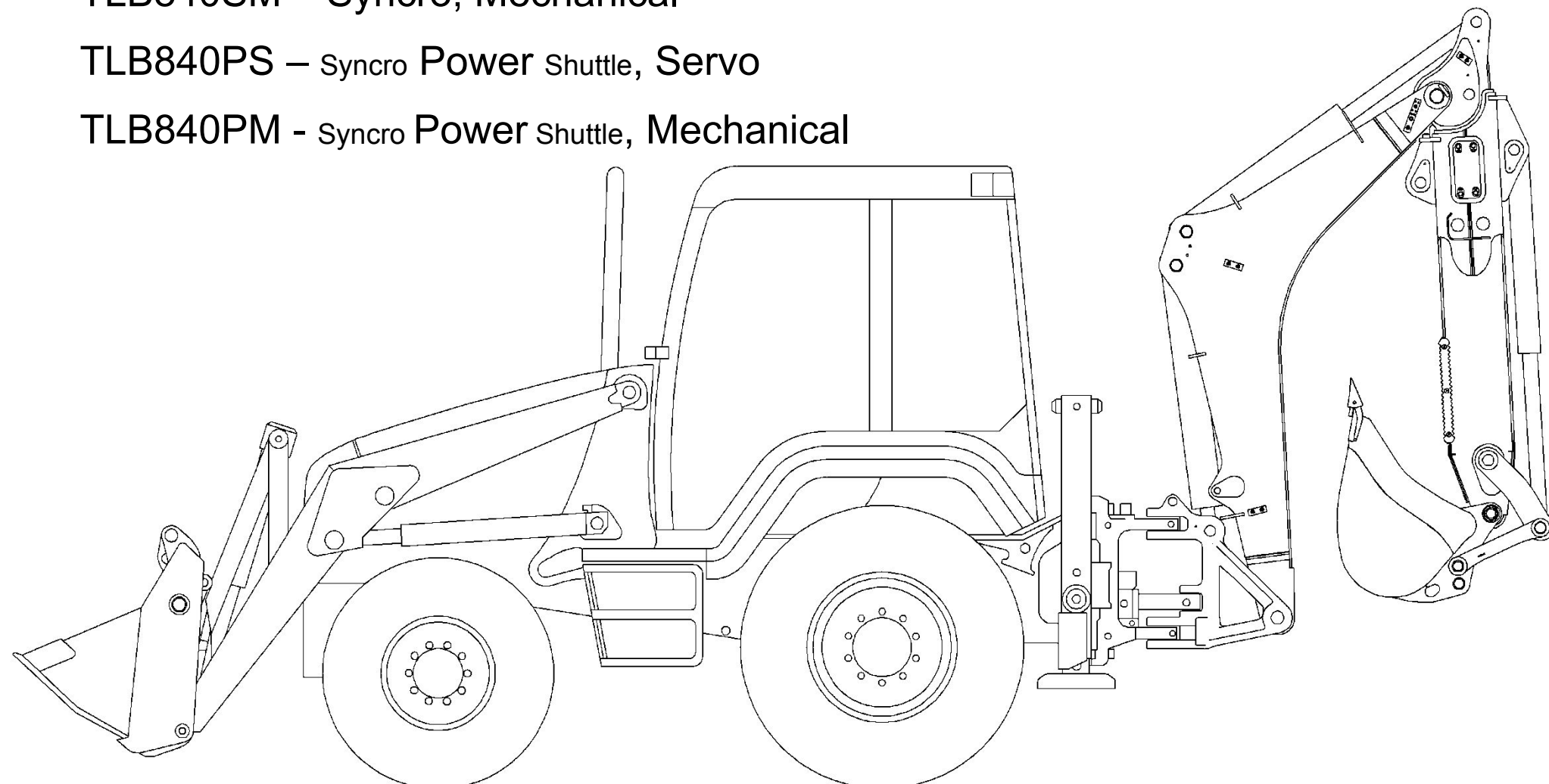


TLB840 Series Backhoe Loaders

TLB840SM – Syncro, Mechanical

TLB840PS – Syncro Power Shuttle, Servo

TLB840PM - Syncro Power Shuttle, Mechanical



TLB840 Series Backhoe Loaders

The difference from a H200 Series

90hp Perkins Engine – Charge air induction

Different front end styling

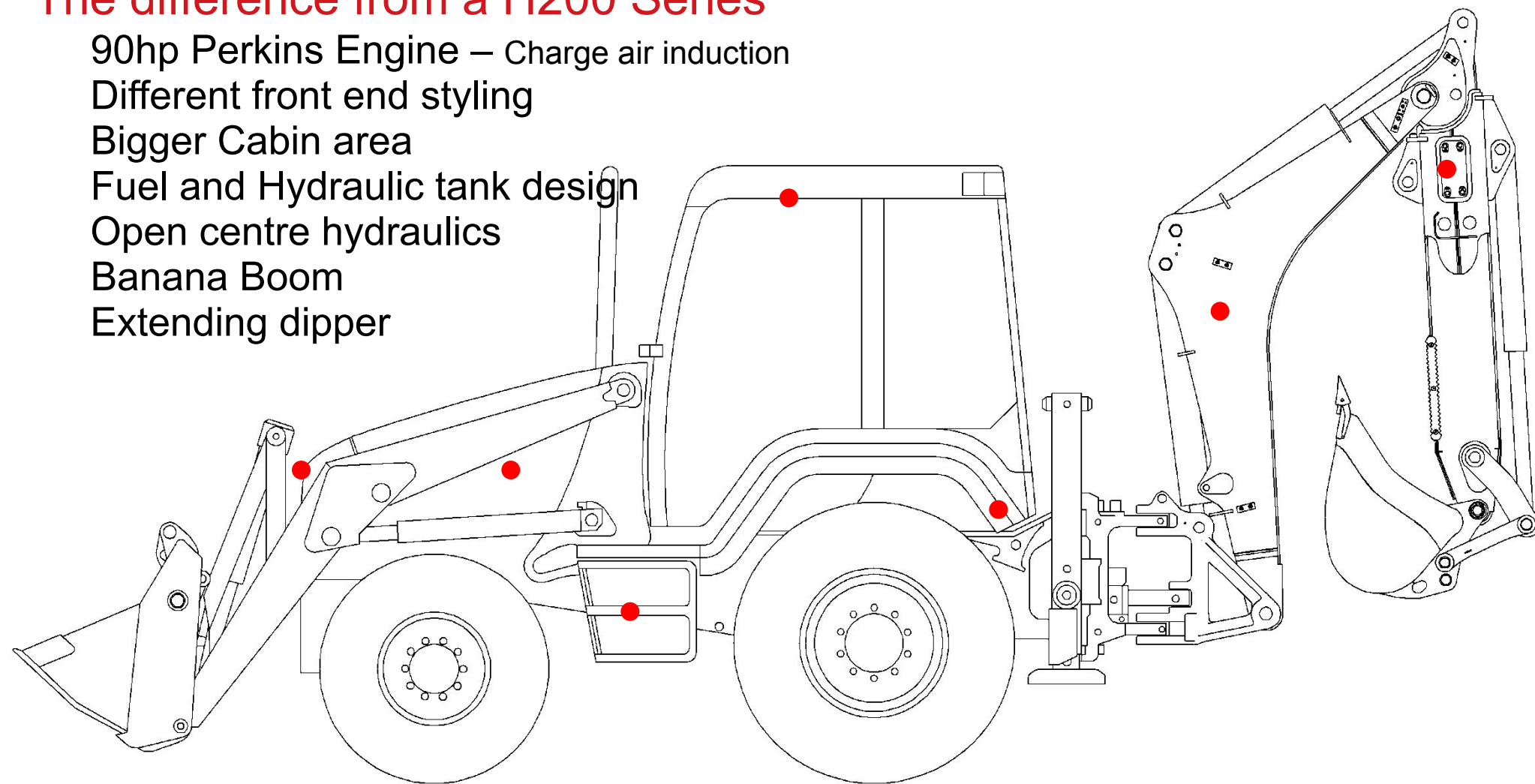
Bigger Cabin area

Fuel and Hydraulic tank design

Open centre hydraulics

Banana Boom

Extending dipper

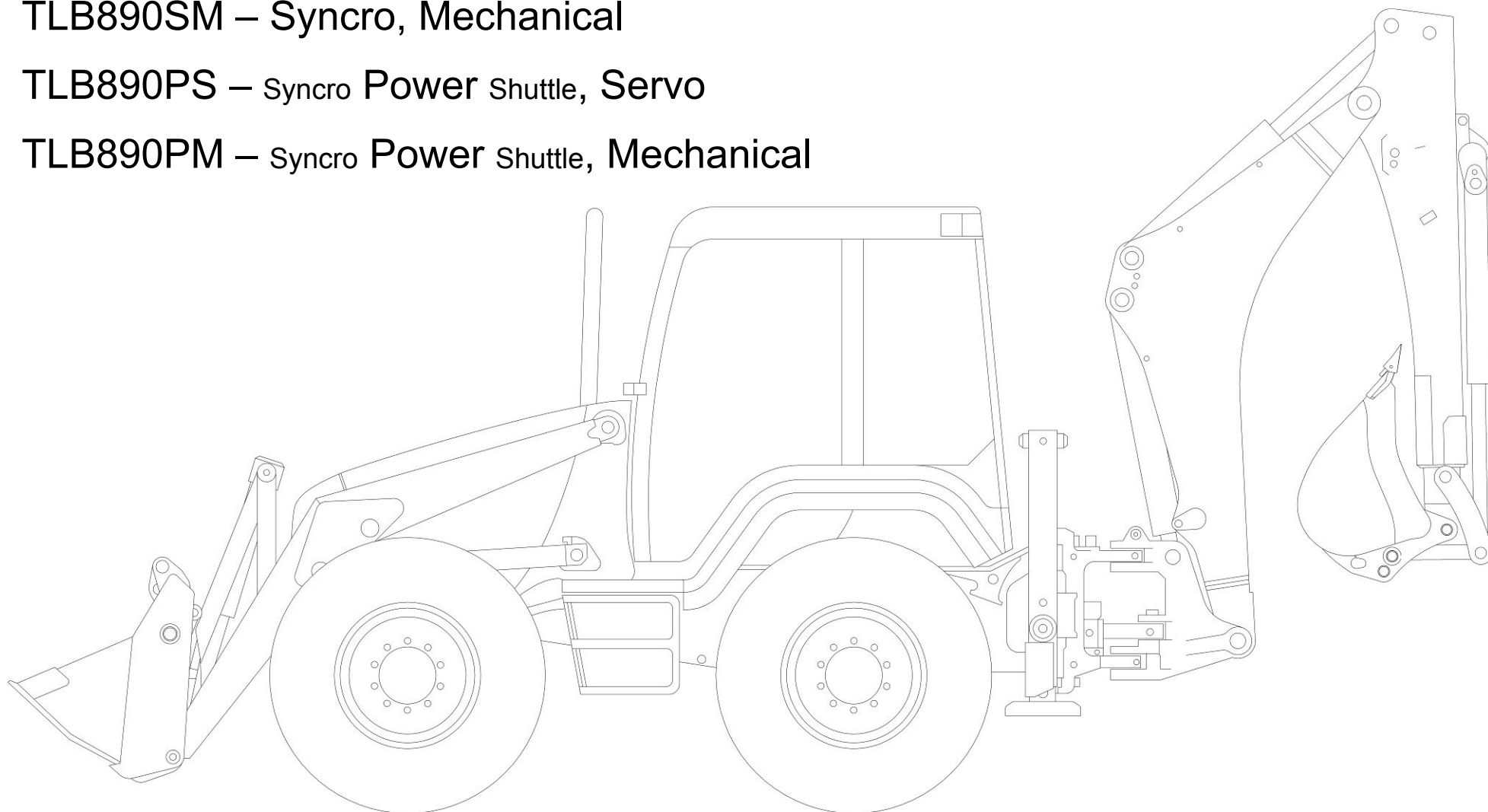


TLB890 Series Backhoe Loaders

TLB890SM – Syncro, Mechanical

TLB890PS – Syncro **Power** Shuttle, **Servo**

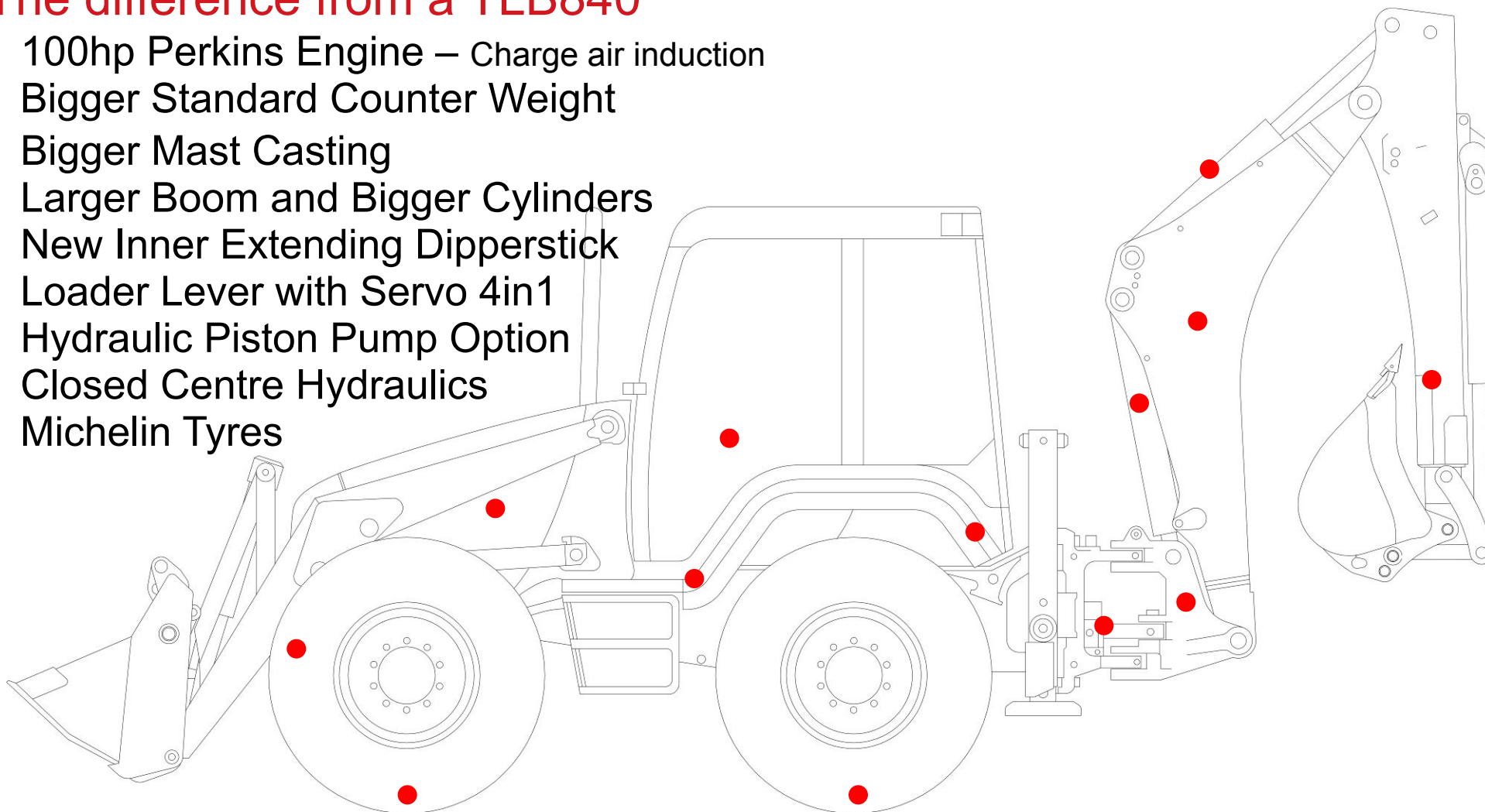
TLB890PM – Syncro **Power** Shuttle, **Mechanical**



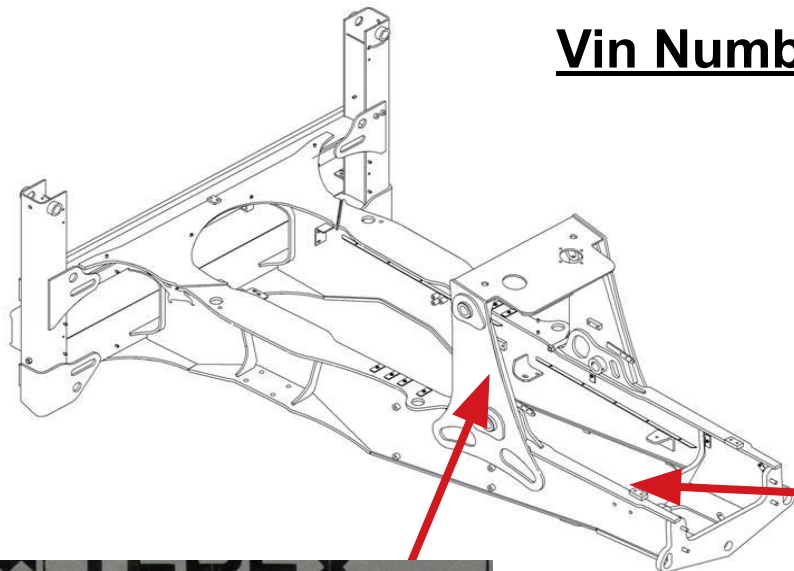
TLB890 Series Backhoe Loaders

The difference from a TLB840

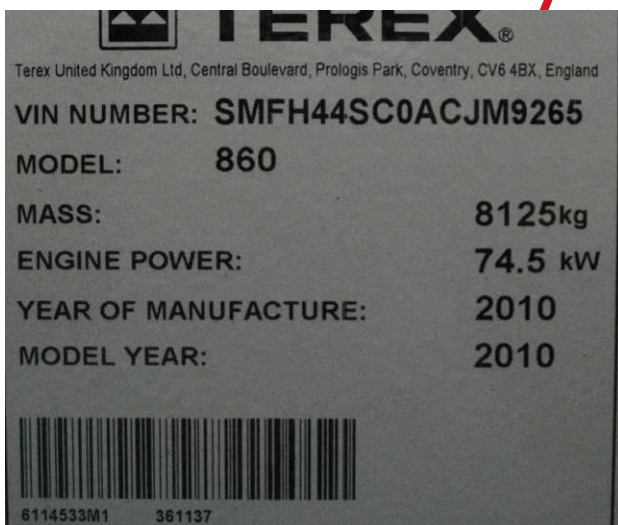
- 100hp Perkins Engine – Charge air induction
- Bigger Standard Counter Weight
- Bigger Mast Casting
- Larger Boom and Bigger Cylinders
- New Inner Extending Dipperstick
- Loader Lever with Servo 4in1
- Hydraulic Piston Pump Option
- Closed Centre Hydraulics
- Michelin Tyres



Vin Number Location



Chassis Stamped



External Vin Number Plate

H200 - Vin Number Definition Tier 2

Position	Item	Digit	Description / Values	Example
1	Manufacturer ID	S	Registered with BSI	S
2		M		M
3		F		F
4	Product Variants	X	H= Terex/TCE G= Ferrec	H
5	Transmission	X	4= 4 Speed Synchro Shuttle 3= 3 Speed Synchro Shuttle 6= 4 Speed Power Shift 5= 3 Speed Power Shift	5
6	Drive	X	4= 4 WD 2= 2 WD	4
7	Digging Length	X	S= 4.5 Std T= 4.5 Ext L= 4.9 Std E= 4.9 Ext N= None	T
8	Operator Compartment	X	C= Cab R= ROPS	C
9	Loader Element Function	X	0= Mechanical N= None	0
10	Production Year	X	See Table 1 - BSAU 175 Model Year	4
11	Chassis Type	X	See Table 2	C
12	Engine Type	X	F= 68.5 kW (92HP) G= 74.5 kW (100HP)	G
13	Digging Element Function	X	M= Mechanical N= None S= Servo	M
14	Serial Number	X	Machine Serial Number	3
15		X		6
16		X		5
17		X		7

Table 1 - Production Year

Digit	Year	Digit	Year
P	1993	1	2001
R	1994	2	2002
S	1995	3	2003
T	1996	4	2004
V	1997	5	2005
W	1998	6	2006
X	1999	7	2007
Y	2000	8	2008

Table 2 - Chassis Type

Digit	Machine Type
A	2 WS/Base/Side Shift (820)
B	2 WS/Base/Centre Mount (820)
C	2 WS/Main/Side Shift (860-880)
D	2 WS/Main/Centre Mount (860-880)
E	4 WS/Side Shift (970-980)
F	4 WS/Centre Mount (970-980)



TEREX®

WORKS FOR YOU.™

H200 - Vin Number Definition Tier 3

Position	Item	Digit	Description / Values
1	Manufacturer ID	S	Registered with BSI
2		M	
3		F	
4	Product Variants	X	H = Terex/TCE G = FERMec
5	Transmission	X	4 = 4 Speed Synchro Shuttle 3 = 3 Speed Synchro Shuttle 6 = 4 Speed Power Shift 5 = 3 Speed Power Shift
6	Drive	X	4 = 4 WD 2 = 2 WD
7	Digging Length	X	S = 4.5 Std T = 4.5 Ext L = 4.9 Std E = 4.9 Ext N = None
8	Operator Compartment	X	C = Cab R = ROPS
9	Loader Element Function	X	0 = Mechanical N = None
10	Production Year	X	See Table 1 - BSAU 175 Model Year
11	Chassis Type	X	See Table 2
12	Engine Type	X	H = 70.0 kW (90HP) J = 74.5 kW (100HP)
13	Digging Element Function	X	M = Mechanical N = None S = Servo
14	Serial Number	X	Machine Serial Number
15		X	
16		X	
17		X	

Example
S
M
F
H
5
4
T
C
0
4
C
J
M
3
6
5
7

Table 1 - Production Year

Digit	Year	Digit	Year
P	1993	1	2001
R	1994	2	2002
S	1995	3	2003
T	1996	4	2004
V	1997	5	2005
W	1998	6	2006
X	1999	7	2007
Y	2000	8	2008

Table 2 - Chassis Type

Digit	Machine Type
A	2 WS/Base/Side Shift (820)
B	2 WS/Base/Centre Mount (820)
C	2 WS/Main/Side Shift (860-880)
D	2 WS/Main/Centre Mount (860-880)
E	4 WS/Side Shift (970-980)
F	4 WS/Centre Mount (970-980)



TEREX®

WORKS FOR YOU.™

80 Series - Vin Number Definition T3

Position	Item	Digit	Description / Values	Example
1	Manufacturer ID	S	Registered with BSI	S
2		M		M
3		F		F
4	Product Variants	J	Terex 80 Series	J
5	Transmission	X	A= 3 Speed Synchro Shuttle B= 4 Speed Syncro Shuttle C= 3 Speed Power Shift D= 4 Speed Power Shift	B
6	Drive	X	4= 4 WD	4
7	Digging Length	X	See Table 2	B
8	Operator Compartment	X	C= Cab R= Canopy without windscreen S= Canopy with windscreen	C
9	Loader Element Function	X	O= Mechanical N= None	O
10	Production Year	X	See Table 1 - BSAU 175 Model Year	A
11	Chassis Type	X	See Table 3	H
12	Engine Type	X	K= 70.0 kW (90HP) Turbo aftercooled L= 74.5 kW (100HP) Electronic M= 75.4 kW (turbo aftercooled)	M
13	Digging Element Function	X	M= Mechanical N= None S= Servo	3
14	Serial Number	X	Machine Serial Number	6
15		X		5
16		X		7
17		X		

Table 1 - Production Year

Year	Code
2010	A
2011	B
2012	C
2013	D
2014	E
2015	F

Table 2 - Digging Depth

Digit	Dipper Type
A	Standard dipper - std dig
B	Extendable dipper - std dig
C	Standard dipper - deep dig
D	Extendable dipper - deep dig
N	None

Table 3- Chassis Type

Digit	Machine Type
G	840 2WS SS - short drop
H	840 2WS SS - long drop
J	840 2WS CM - short drop
K	840 2WS CM - long drop

H200 Current Models

Series	Name		Model	Engine	Transmission	Pump Flow	Hydraulics	Front Axle	Rear Axle	Cab	Servo
H200			820	1100 Turbo Gr. Tier2	Tumer/Carraro	80+60	Rexroth SX 14	Carraro	Carraro	Curved Glass	No
			860 SX	1100 Turbo Gr. Tier2	Tumer/Carraro	80+80	Rexroth SX 14	Carraro	Carraro	Curved Glass	No
	Fermec -Terex		860 PS	1100 Turbo Gr. Tier2	Clark 16000/Carraro	80+80	Rexroth SX 14	Carraro	Carraro	Curved Glass	No
	From 3 0001		880 SX	1100 Turbo Gr. Tier2	Tumer/Carraro	80+80	Rexroth SX 14	Carraro	Carraro	Curved Glass	Hydraulic
	To 8 5645		880 PS	1100 Turbo Gr. Tier2	Clark 16000/Carraro	80+80	Rexroth SX 14	Carraro	Carraro	Curved Glass	Hydraulic
	New VIN Nbr (SMFH...)		970	1100 Turbo Gr. Tier2	Clark 16000	80+80	Rexroth SX 14	Carraro	Carraro	Curved Glass	No
			980	1100 Turbo Gr. Tier2	Clark 16000	80+80	Rexroth SX 14	Carraro	Carraro	Curved Glass	Hydraulic
H200 T3			820	1104 Turbo Gr. Tier3	Tumer/Carraro	80+80	Rexroth SX 14	Carraro	Carraro	Curved Glass	No
	Terex		860 SX	1104 Turbo Gr. Tier3	Tumer/Carraro	80+80	Rexroth SX 14	Carraro	Carraro	Curved Glass	No
	100hp		860 PS	1104 Turbo Gr. Tier3	Clark 16000/Carraro	80+80	Rexroth SX 14	Carraro	Carraro	Curved Glass	No
	From 8 5645 onwards		880 SX	1104 Turbo Gr. Tier3	Tumer/Carraro	80+80	Rexroth SX 14	Carraro	Carraro	Curved Glass	Hydraulic
	90hp		880 PS	1104 Turbo Gr. Tier3	Clark 16000/Carraro	80+80	Rexroth SX 14	Carraro	Carraro	Curved Glass	Hydraulic
	From 8 6019 onwards		970	1104 Turbo Gr. Tier3	Clark 16000 / TBL1SPS	80+80	Rexroth SX 14	Carraro	Carraro	Curved Glass	No
	Apr-08		980	1104 Turbo Gr. Tier3	Clark 16000 / TBL1SPS	80+80	Rexroth SX 14	Carraro	Carraro	Curved Glass	Hydraulic
Series	Name		Model	Engine	Transmission	Pump Flow	Hydraulics	Front Axle	Rear Axle	Cab	Servo
80 Series	Terex	Oct-10	840SM	1104 Turbo Gr. Tier3	Carraro TBL1	80+60	Walvoil	Carraro	Carraro	Green House	No
	94hp or 840		840PS	1104 Turbo Gr. Tier3	Carraro TBL1 SPS	80+60	Walvoil	Carraro	Carraro	Green House	Hydraulic
	From A 1001 onwards		840PM	1104 Turbo Gr. Tier3	Carraro TBL1 SPS	80+60	Walvoil	Carraro	Carraro	Green House	No
	Oct-11		890PM	1104 Turbo Gr. Tier3	Carraro TBL1 SPS	80+80	Rexroth SX 14S	Carraro	Carraro	Green House	No
	100hp or 890		890SM	1104 Turbo Gr. Tier3	Carraro TBL1	80+80	Rexroth SX 14S	Carraro	Carraro	Green House	No
	From		890PS	1104 Turbo Gr. Tier3	Carraro TBL1 SPS	20-160	Rexroth SX 14S	Carraro	Carraro	Green House	Hydraulic

80 Series Models

TLB890PS uses a Casappa Variable Displacement Piston Pump

820 - 860



970 - 980



TLB840



TLB890

**October 2012****TEREX®****WORKS FOR YOU.™**