

*msi*TM

**BIOS FW SOP
For win8**

USB Bootable Flash disk: The disk can boot to DOS mode.

Step 1



1. Prepare one USB disk.
2. Find HPUSBFW as below link and download it to desktop.

<http://www.msi.com/service/download/firmware-23301.html>

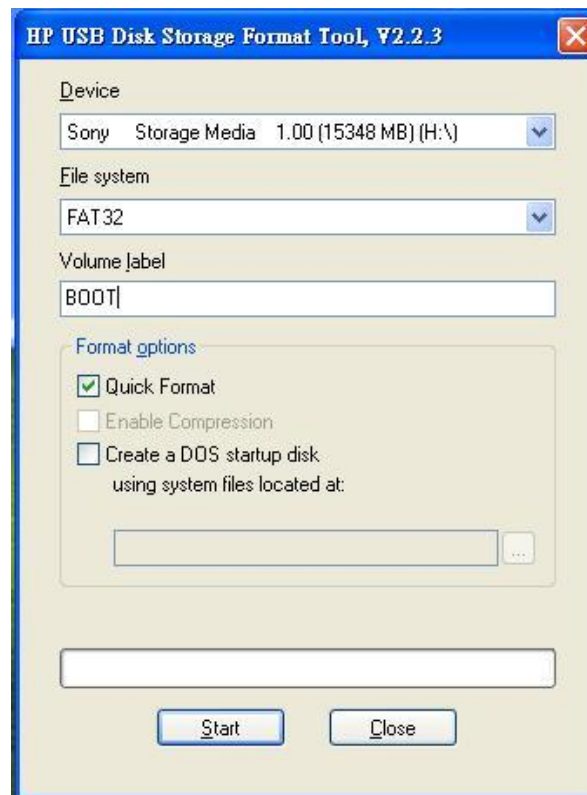
Step 2

- You can see HPUSBFW.rar under desktop and please extract it.
- It must have 2 files in HPUSBFW folder.



Step 3

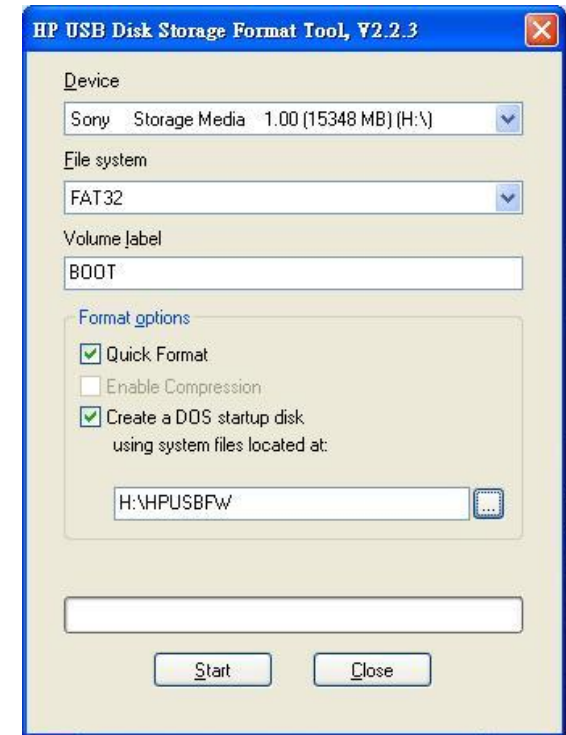
- Connect your USB disk with system.
- Execute HPUSBFW.EXE and then you can see the status as below.



Step 4



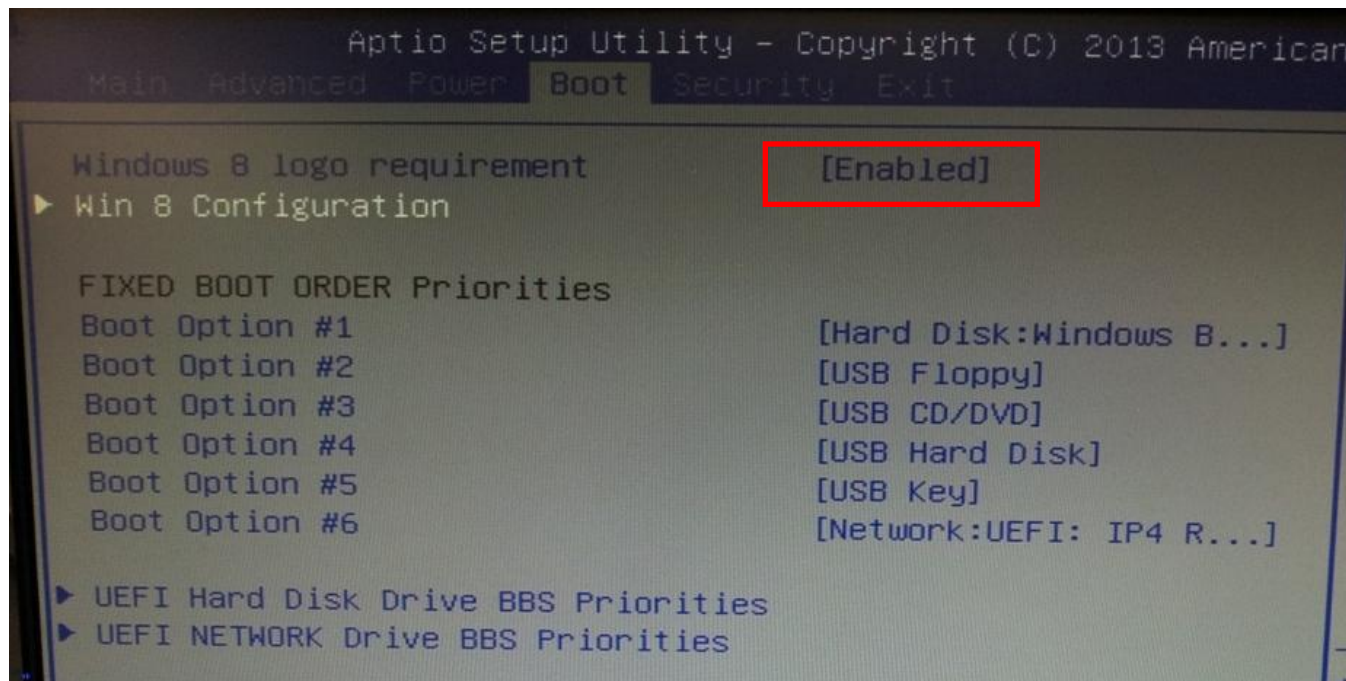
- Checking Device whether show your USB disk .
- Select FAT 32 on “File system”.
- Name the volume label like picture.
- Select “Quick Format” and “create a DOS startup disk”.
- Choose the HPUSBFW folder and then press start button to create it.



Test 1



- power on the system and press "Del" to boot into BIOS.
- Go to Boot option. Please "Disable" windows 8 logo requirement and then save it. (Set up to Legacy mode)



Test 2



- Plug in USB bootable disk to your system, and then power on the system.
- Press "F11" key.



Test 3



- Select USB bootable disk and let system boot to DOS mode.



Test 4

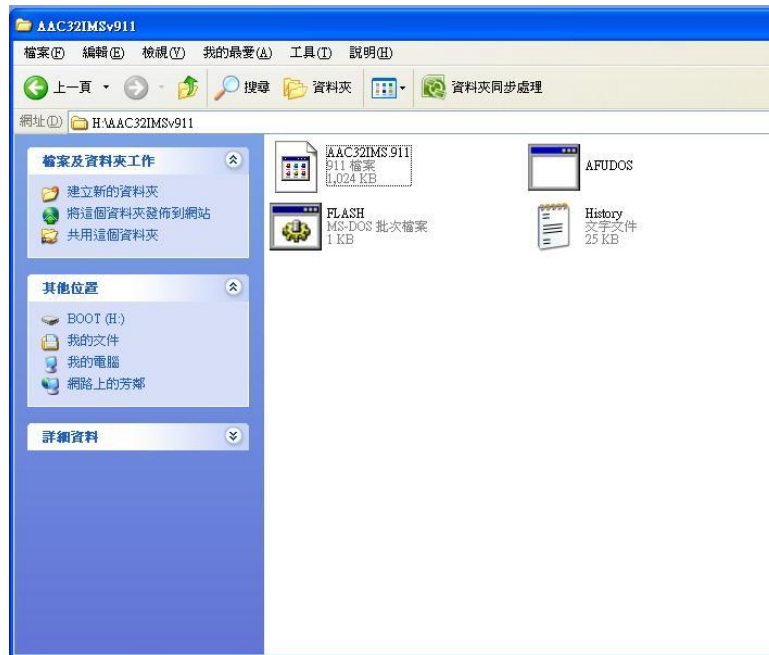


- If you see the status as picture, it means successfully.



The latest BIOS file for the model you want to flash.

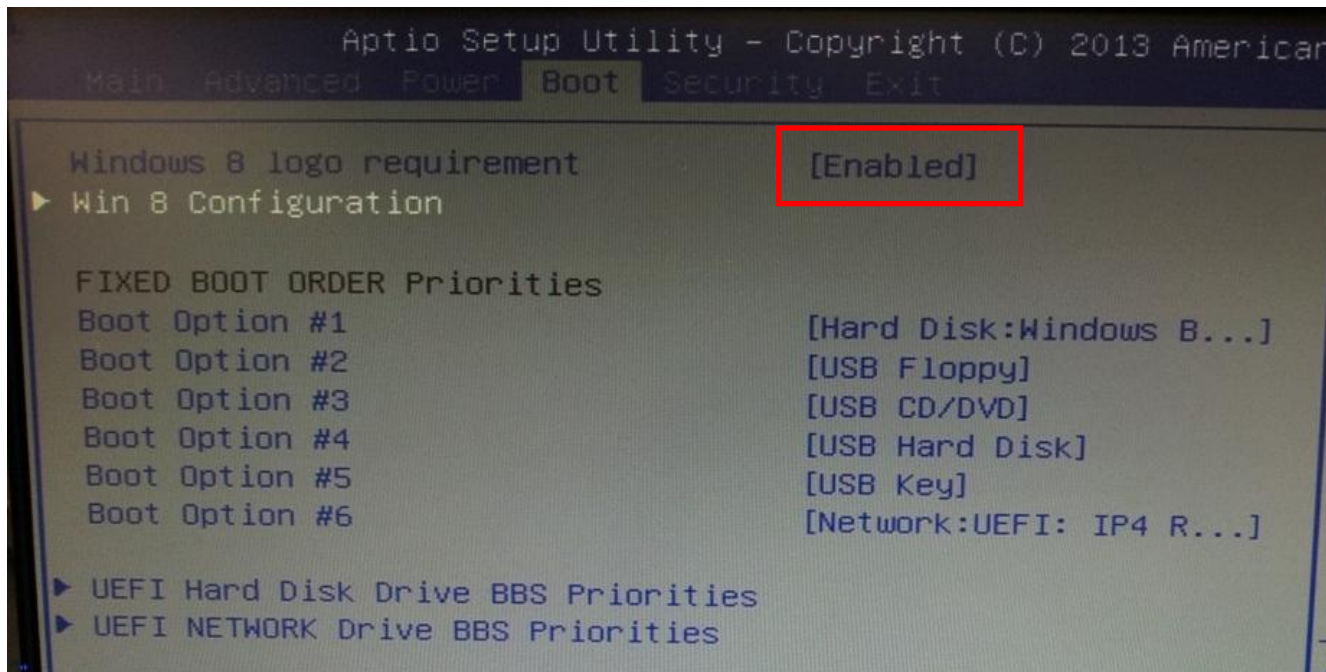
◎ Copy the latest BIOS to the USB bootable disk, and then power off the system.



STEP2



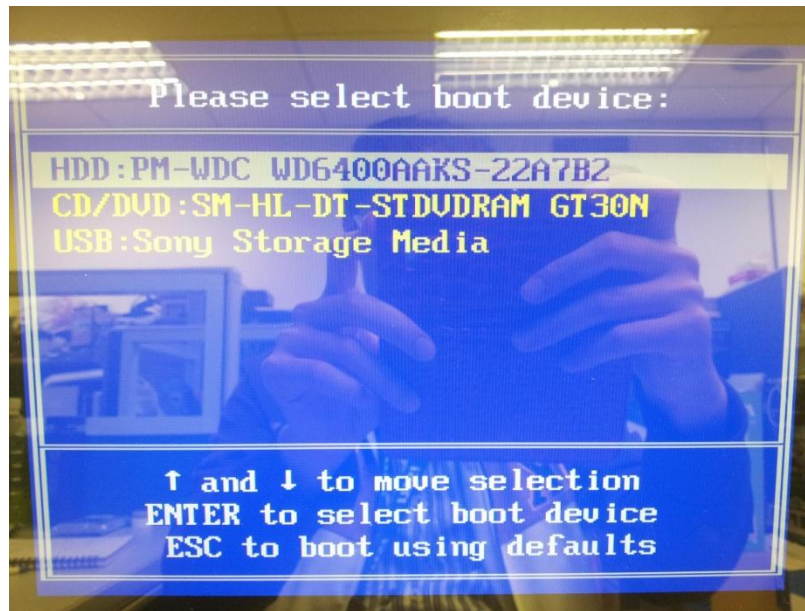
- power on the system and press "Del" to boot into BIOS.
- Go to Boot option. Please "Disable" windows 8 logo requirement and then save it. (Set up to Legacy mode)



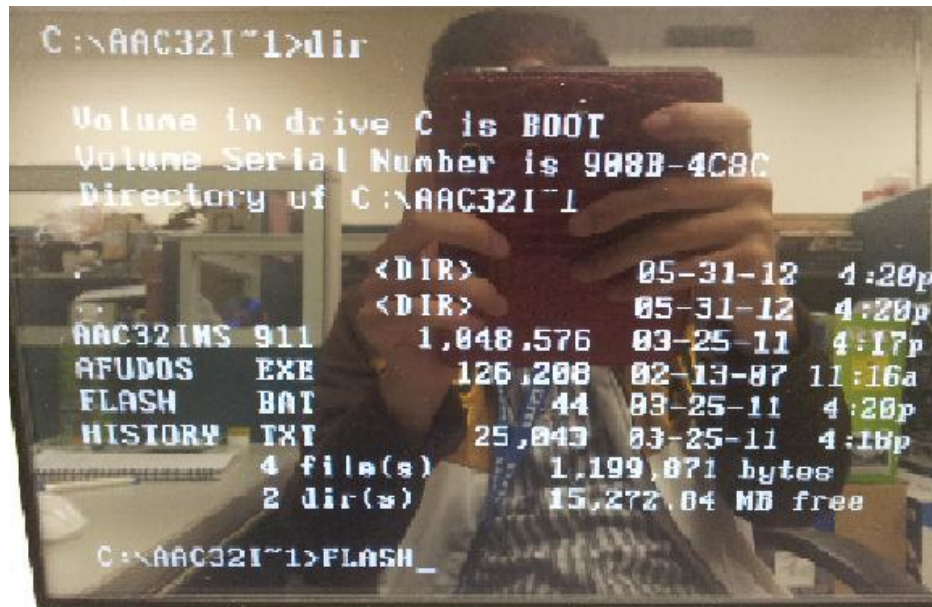
- © Plug in USB bootable disk to your system, and then power on the system.



- © Press **"F11"** to select USB boot device during the POST.
- © Select USB bootable disk and let system boot to DOS mode.



- © As system boot into DOS mode, go to the BIOS folder.
- © Execute "FLASH.BAT" to flash BIOS.



MS-AC32 MVT Frank 09

NOTE.

Do not remove the power cable or power off the system during BIOS Flash process.

- © If BIOS flash successfully, **please remove all powers of this system,** and power on again.

STEP 7



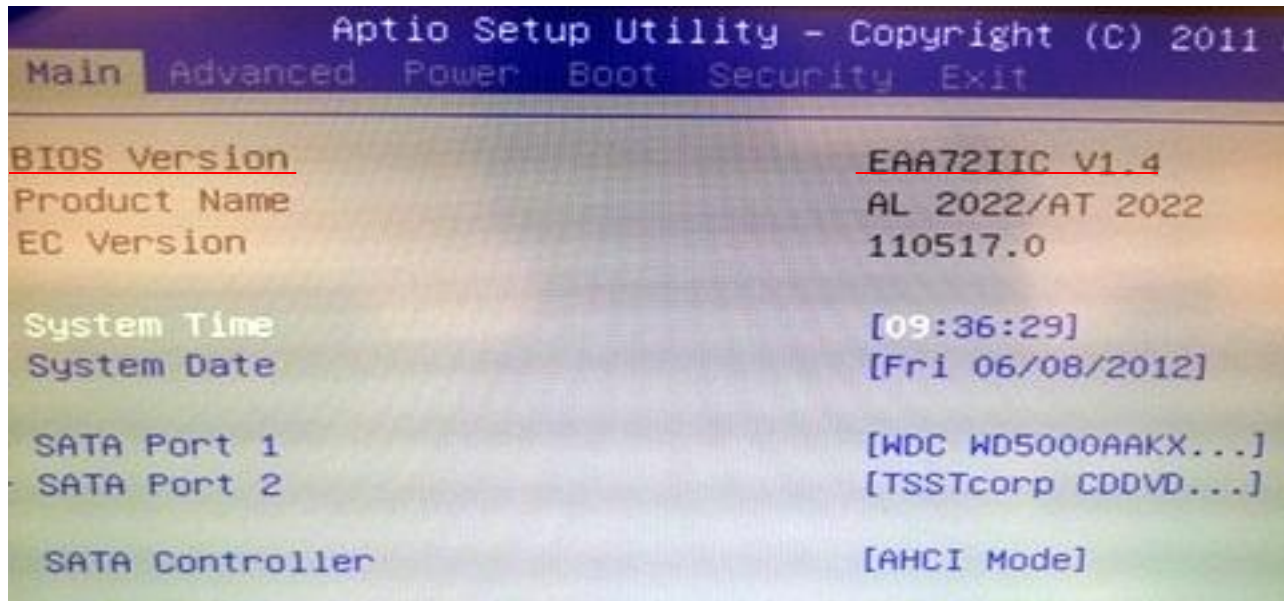
- © Power on the system and press **"DEL"** key to enter BIOS SETUP Menu during POST.



STEP 8



- © You can check BIOS Version whether it's the same as you want in the BIOS SETUP Menu.



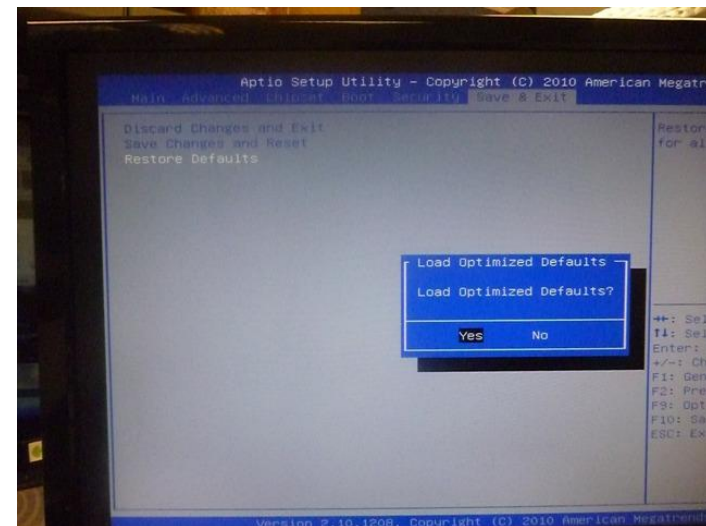
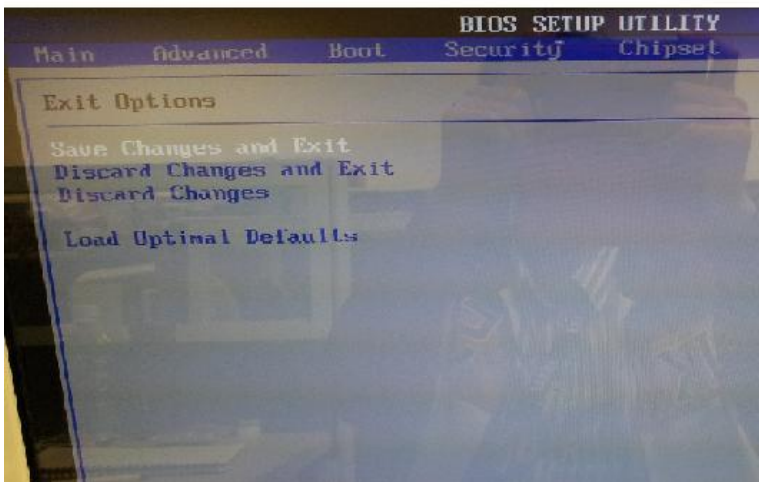
The screenshot shows the Aptio Setup Utility interface. At the top, it reads 'Aptio Setup Utility - Copyright (C) 2011'. Below this is a navigation bar with 'Main' highlighted, followed by 'Advanced', 'Power', 'Boot', 'Security', and 'Exit'. The main display area shows the following information:

<u>BIOS Version</u>	<u>EAA72IIC V1.4</u>
Product Name	AL 2022/AT 2022
EC Version	110517.0
System Time	[09:36:29]
System Date	[Fri 06/08/2012]
SATA Port 1	[WDC WD5000AAKX...]
SATA Port 2	[TSSSTcorp CDDVD...]
SATA Controller	[AHCI Mode]

STEP 9



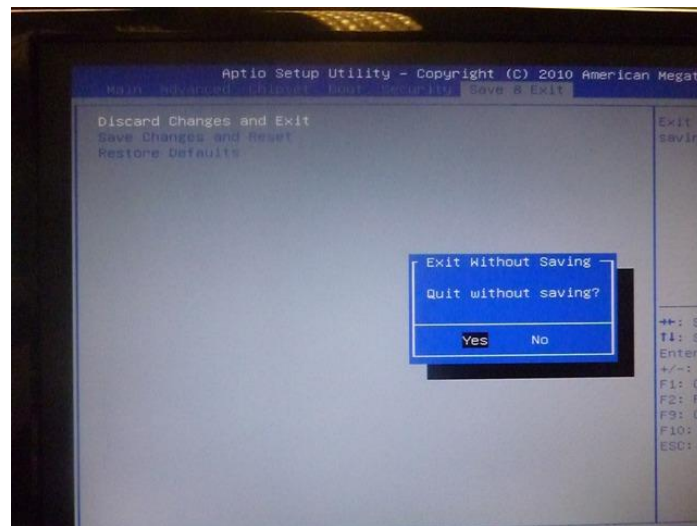
- © Go to "BIOS / Save & Exit / Load Optimal Defaults" , and then select Load Optimal Defaults
- © select "YES" to Load Optimal Defaults.



STEP 10



- © Go to "BIOS / Exit / Save Change and Reboot"
- © Select "YES" to Save Change and Reboot, then system will reboot and the flash process is done.



**Thanks for
your attention**

msi[™]