

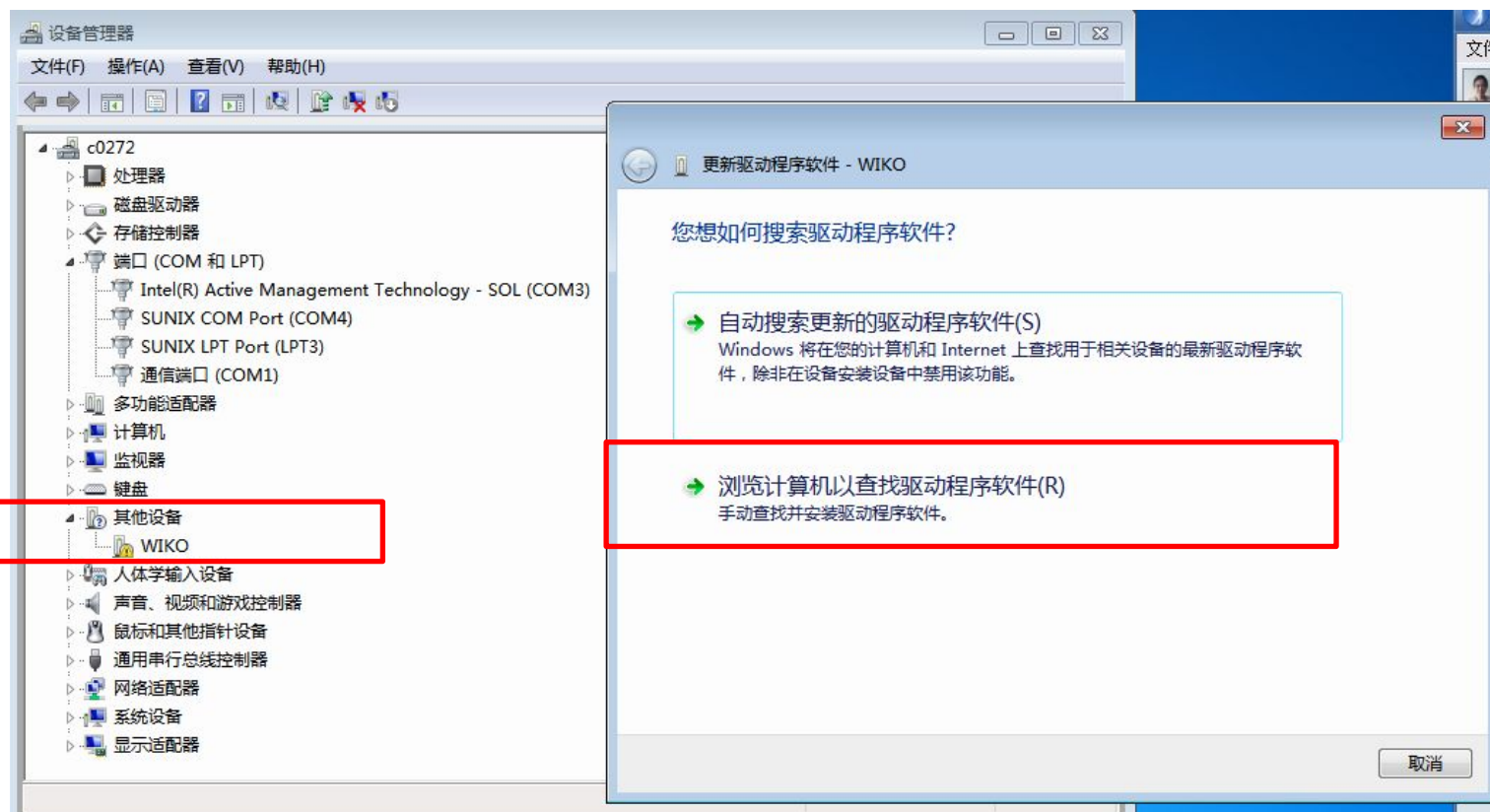
# Quick Guide for Downloading S/W and IMEI

# Tool & Requirements

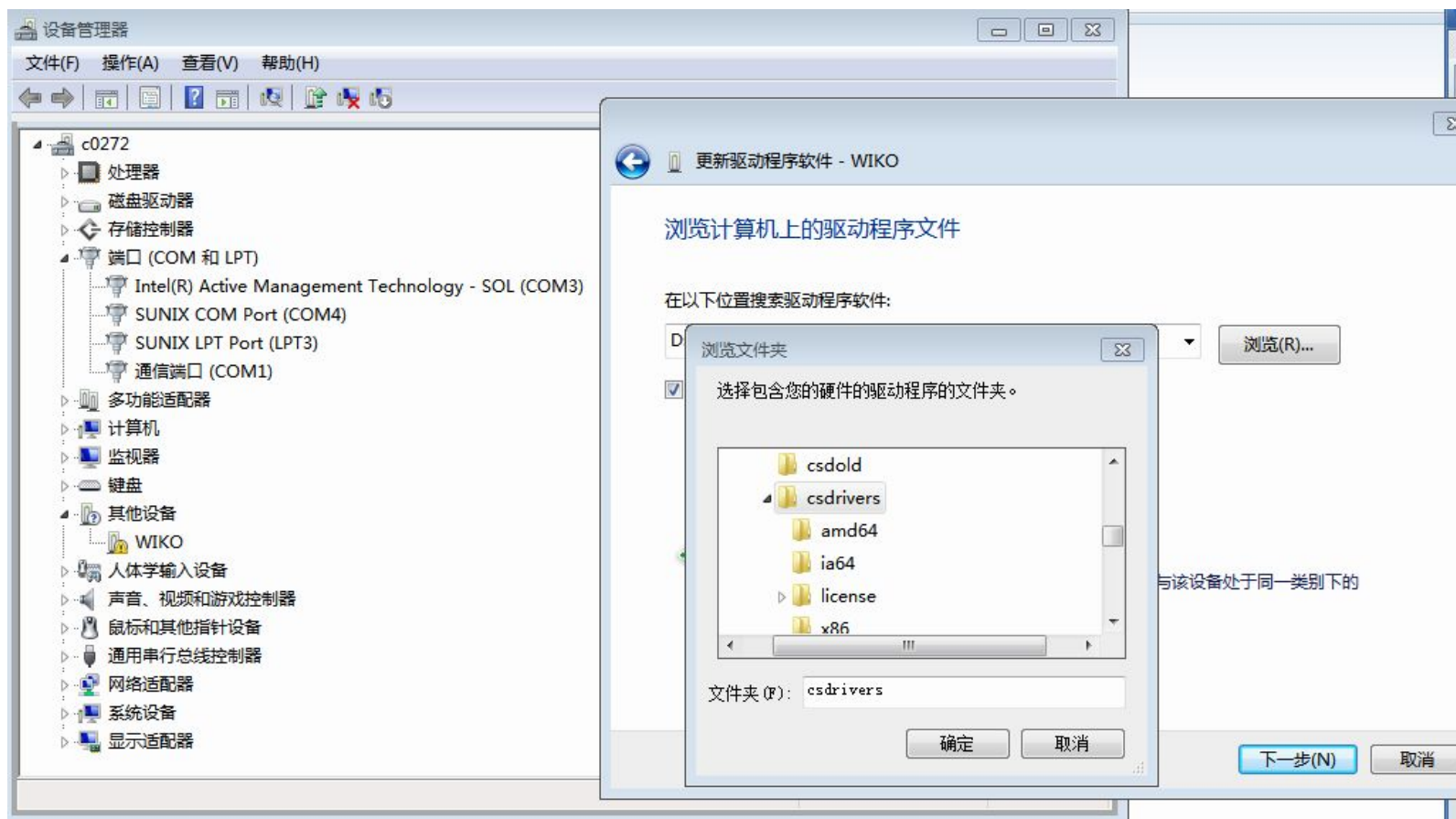
- 1. USB Cable
- 2. Support USB 2.0 with PC
- 3. Only support windows XP

# Install USB Driver

1. Before downloading S/W and IMEI number, you must install USB Driver in the PC firstly. Enter Device Manager-> Other device, click the mouse on the right side, choose to update driver, then manually check and install driver software (See screenshot below). 在您的电脑进入面板控制, 然后找到设备管理器, 再找到其他设备, 点击鼠标右键, 选择更新驱动程序, 会弹出一个对话框, 选择手动查找并安装驱动程序软件。

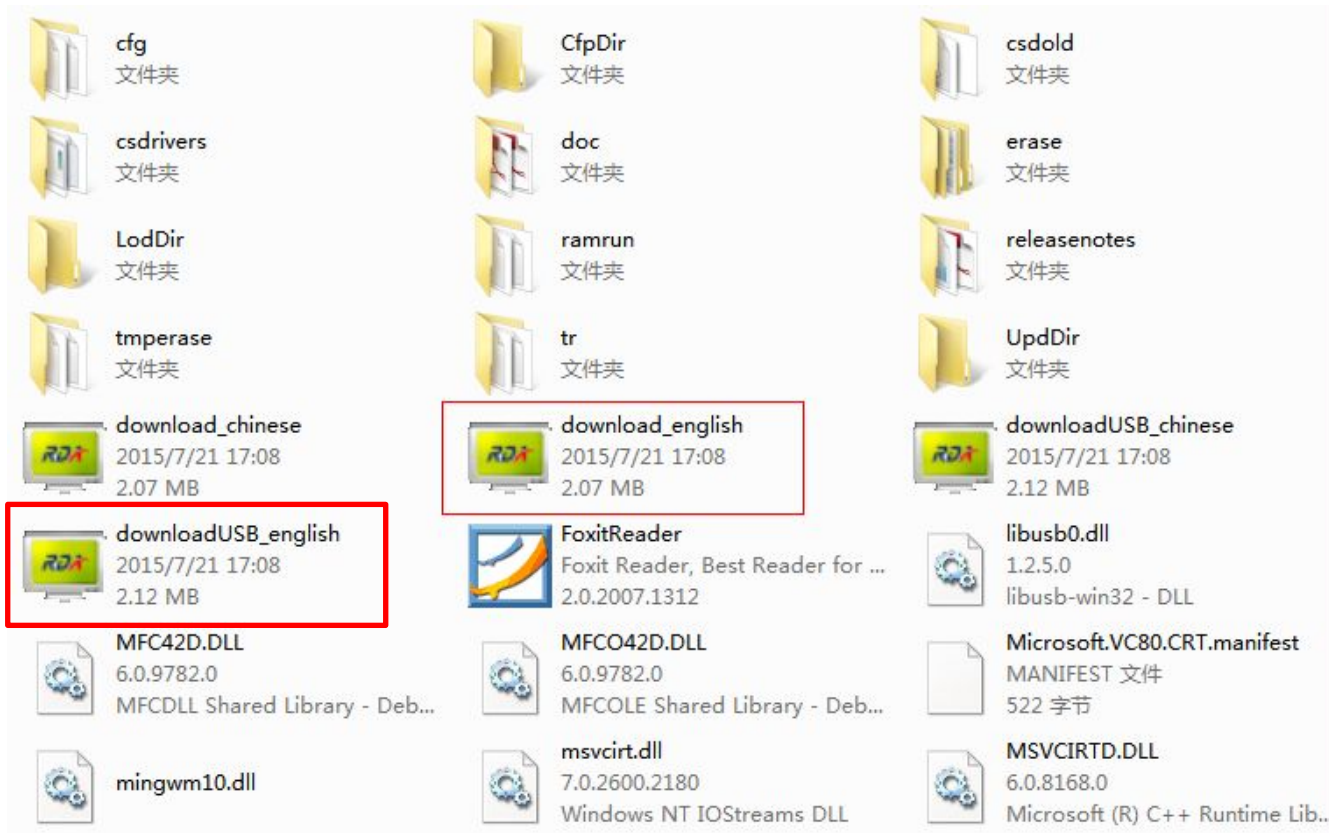


2. After you choose “manually check and install driver software”, click “Browser” then you must find a file named csdrivers in “ProductLineToolV8.00.14\_20140703”, and click it and then click “OK”. 点击手动查找并安装驱动程序以后，会弹出一个对话框，然后选择浏览，在“ProductLineToolV8.00.14\_20140703”这个文件夹，找到csdrivers这个驱动文件，点确定。

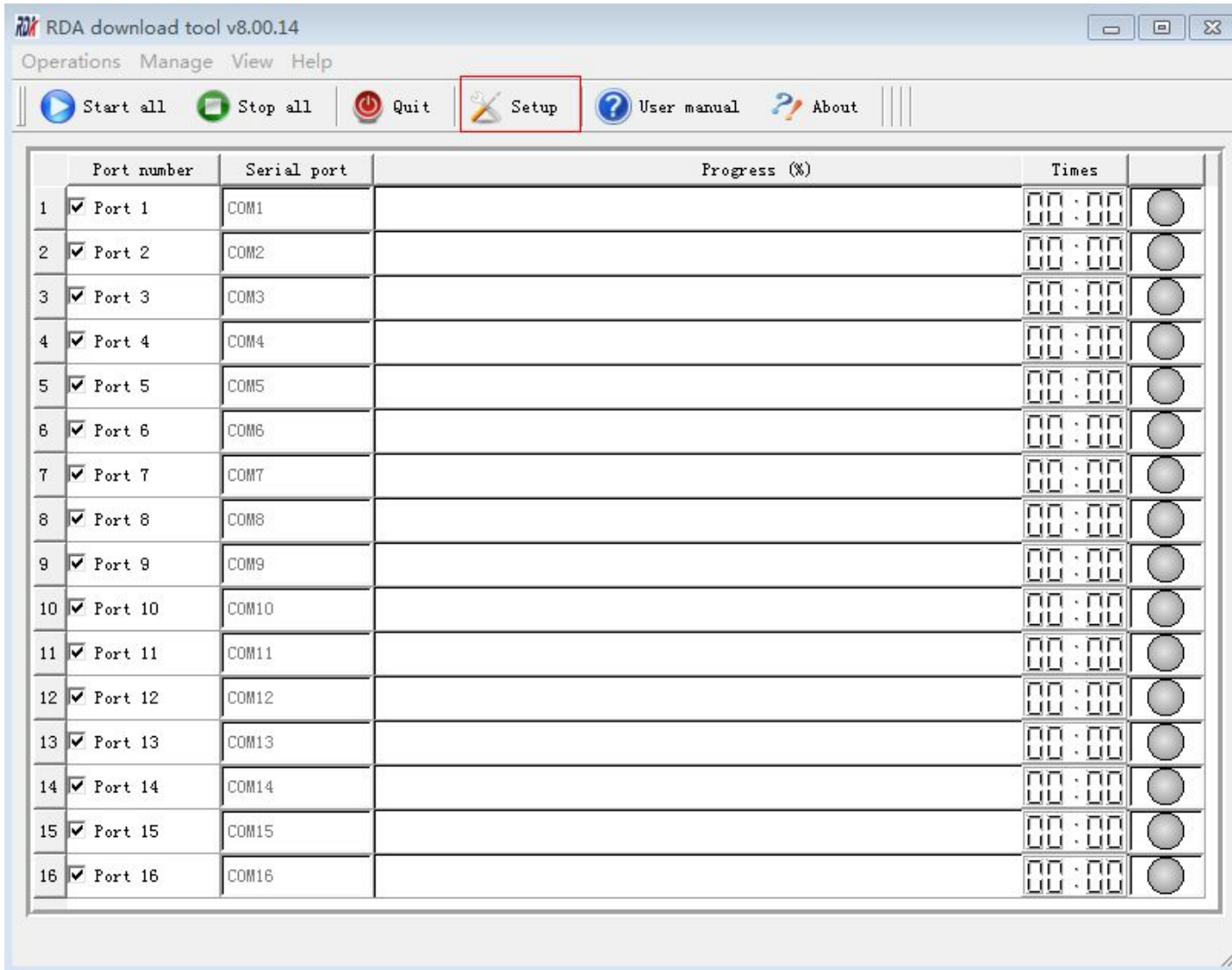


# Start to Download S/W

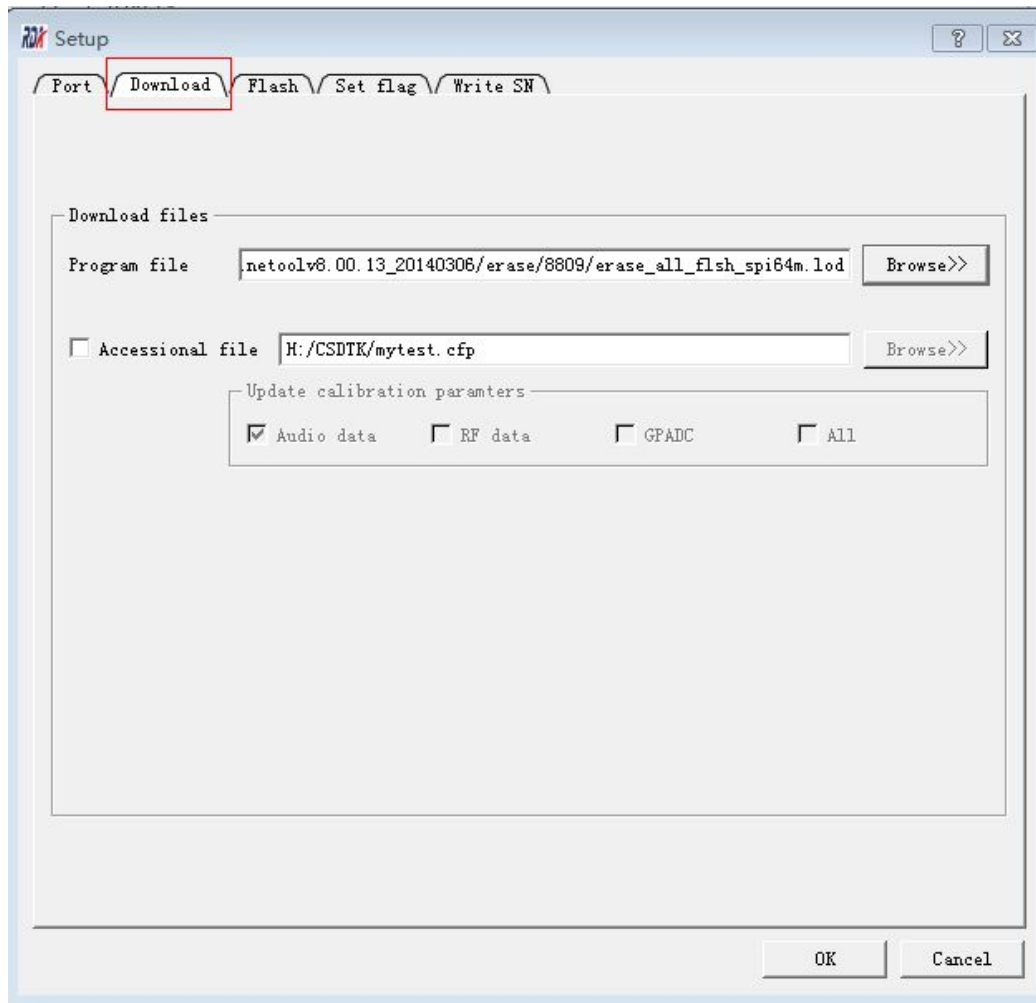
1. Open the file “ProductLineToolV8.00.14\_20140703”
2. Click the program of “DownloadUSB\_English”, please see the screenshot below:



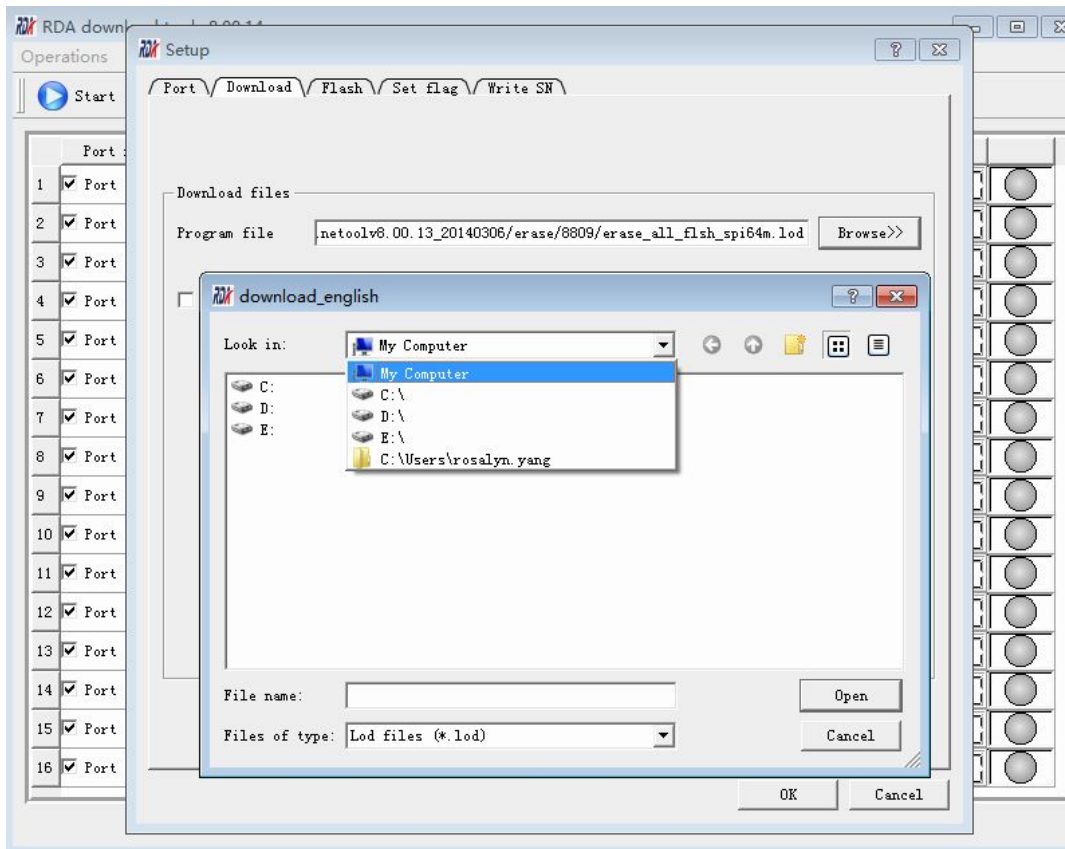
- 3. Enter the interface and then click “Setup” as highlighted in Red color as below:



## □ 4. Click “Download”.

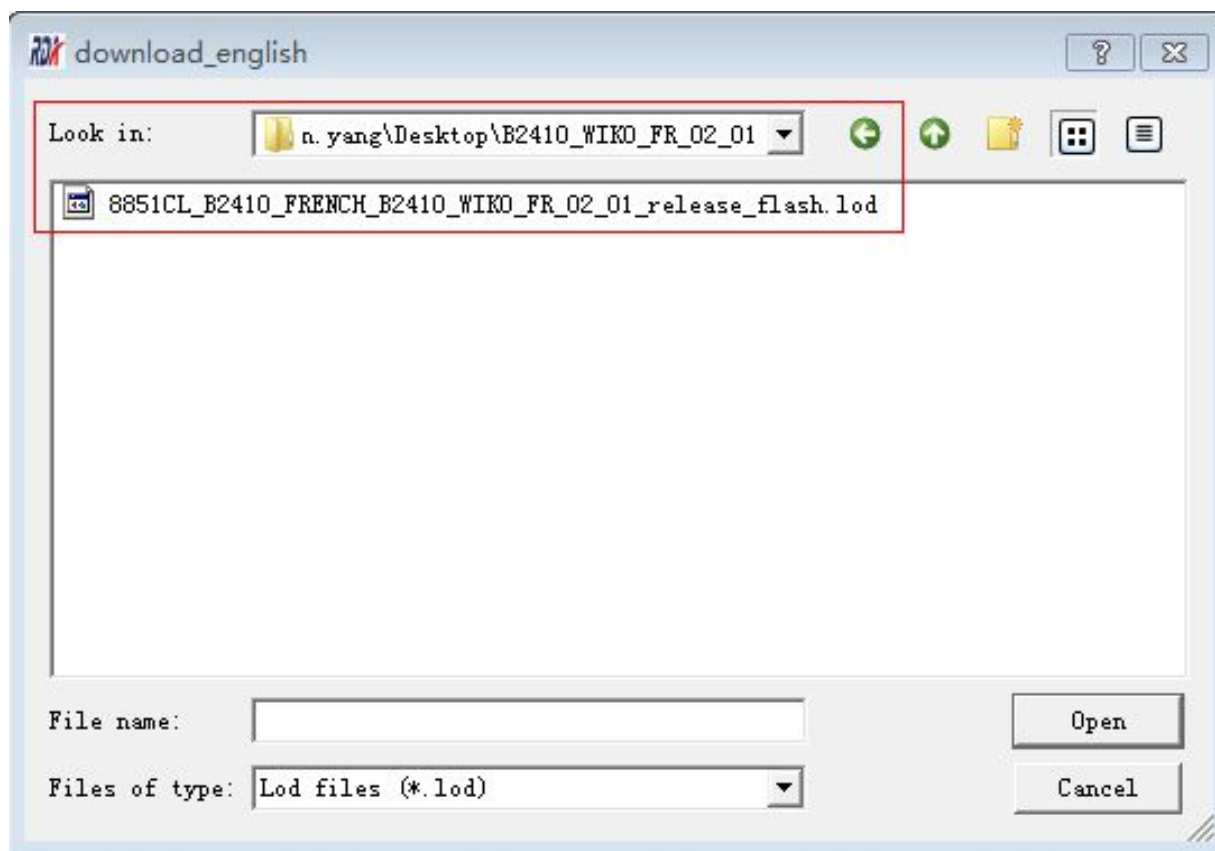


- 5. Click “Browser” and find the s/w package from PC. For example, now I am trying to download S/W of B2410, and I put the S/W in “C:\users\rosalyn.yang\Desktop”, I will find the S/W there.

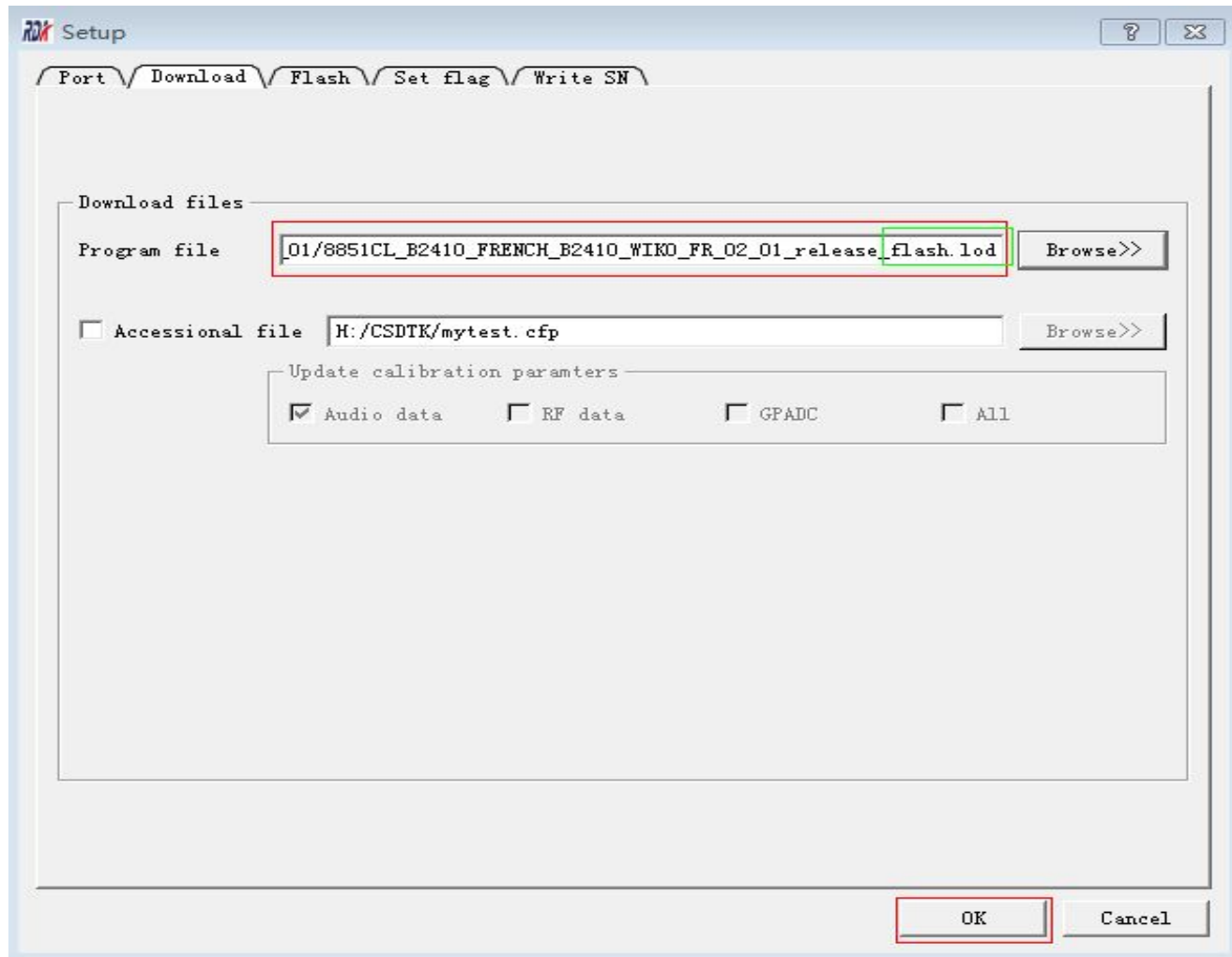




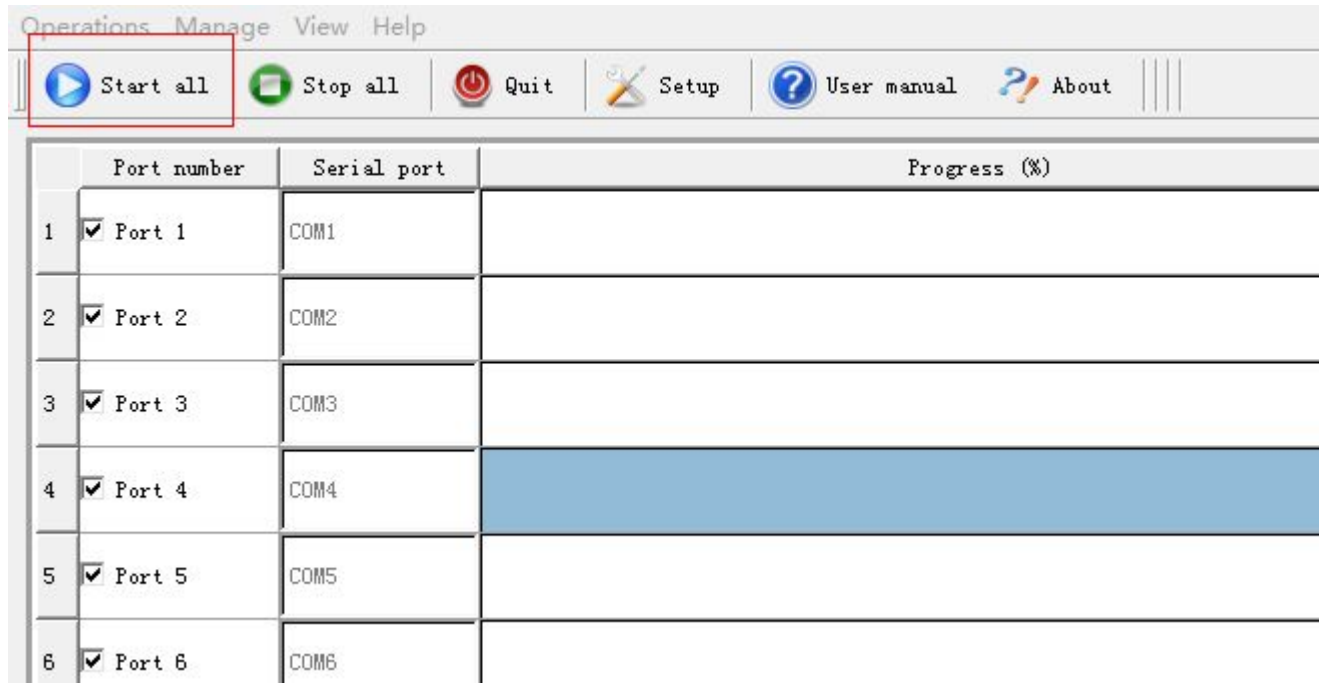
- 6. After you find the S/W package in your PC, find a .lod file, then double click.



□ 7. Click OK.

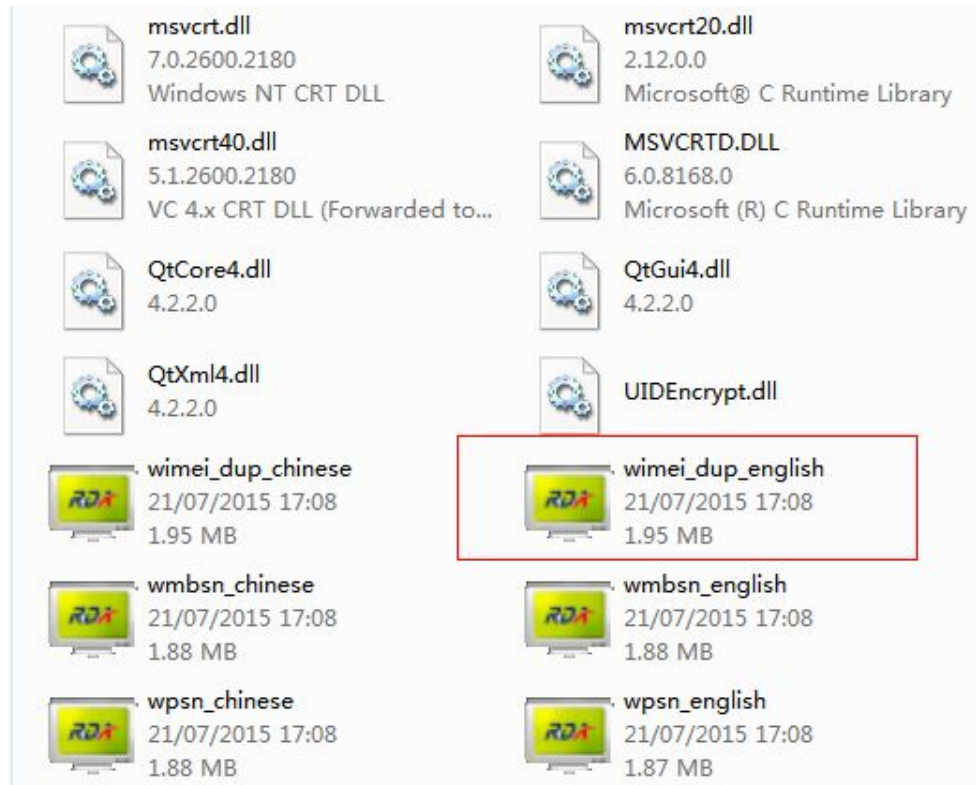


- 8. Power on the mobile phone, then connect it with PC by using a USB cable. Press and hold 0 key. Then click “Start all”.



# Start to Write IMEI number

- 1. Open the file “ProductLineToolV8.00.14\_20140703”
- 2. Click the program of “wimei\_dup\_english”, please see the screenshot below:



- 2. Enter IMEI interface and then click setup, you need to set up USB port, Flash type (Flash\_spi32m) and SIM card number as highlighted in Red color as below, then click ok.

Setup

Port setting

Host port

Port number: COM1

Baud(bps): 921600

Usb port

Chipset

Flash type: flsh\_spi32m

SIM card number

One IMEI  Two IMEI  Three IMEI  Four IMEI

IMEI source

Manual input  validate

From data file: E:/zygwork/singleIMEI/DTK/cfg/imei20091225\_2.xls

Custom number

Initial number: 1000000000000000 Mask: 1000000030\*\*\*\*\*  Add 1 by the order

Max limited number: 100000  Verify the IMEI Number

Flag bit setting

Check former worksite: The 1st worksite

Set self worksite flag: The 2nd worksite

Set power on mode: Normal mode

OK Cancel

- 3. Input IMEI number in the blank highlighted in red color below. Power on the mobile phone, then connect it with PC by using a USB cable. When the phone shows up “Mass storage”, then press and hold 0 key. Then click “Start”.

