

SBCT Organization & Capabilities

FM 3-90.6, August 2006
FM 3-21.31, March 2003
FM 3-21.21, April 2003
FM 3-21.11, January 2003

12/17/06





Agenda



- Vehicles and capabilities
- SBCT capabilities and composition
- BN capabilities and composition
- Co composition
- Support
- questions



Even Rambo had a Montage





Stryker Family of Vehicles

FIGHTING VEHICLE? NO
CAPABILITIES PLATFORM? YES

PROTECTED MOBILITY
ARMOR PROTECTION FOR HMG
CARRIES 9-MAN SQUAD TO 60 MPH; 330 MILES RANGE

FIREPOWER
KONGSBERG REMOTE WEAPONS SYSTEM (RWS) - M2 .50 CAL OR MK-19

SITUATIONAL AWARENESS/COP
UTILIZES C4ISR SYSTEMS

RECONNAISSANCE/RESUPPLY/CASEVAC



Infantry Carrier Vehicle (ICV) - 128



Commander's Vehicle (CV) - 27



Fire Support Vehicle (FSV) - 13



Recon Vehicle (RV) - 51



Medical Evacuation Vehicle (MEV) - 16



Engineer Squad Vehicle (ESV) - 12



Mobile Gun System (MGS) - 27



NBC Recon Veh (NBCRV) - 3



120mm Mounted Mortar Carrier (MC-B) - 36



Anti Tank Guided Missile (ATGM) - 9

Commonality

- Common Operating Picture
- Common Chassis & Drive Train
- Common Key Perf Parameters
- Common Survivability
- TMDE, Spare Parts, Tools & Skills

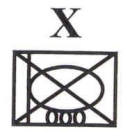
Key Characteristics

Configuration	Combat (in.)	Shipping (in.)
Height:	122.88	103.62
Width:	116.43	112.80
Length:	286.30	286.50
Weight:	38,000 lbs (target)	
Engine:	350 hp JP-8/Diesel (Caterpillar) (vs. LAV III 275hp)	
Transmission:	Allison	
Brakes:	5 inch ABS (Common with FMTV 5-Ton)	
Other:	8 Wheel Drive; 4 Wheel Steering	
Crew:	2 + 9-man Squad	

322 Strykers
 + RTNs
 + TACP
 + EN PLs
 + EN Cdr



The Stryker Family



ICV



MGS

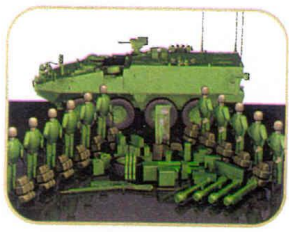


Infantry Carrier Vehicle (ICV)

- LAV III Chassis
- 8x8 Wheeled w/CTIS & Run Flat
- High Hard Steel Structure
- Remote Weapon Station with cal .50 MG or MK19 40mm

Mobile Gun System (MGS)

- LAV III Chassis
- Low Profile Turret
- M68A1 Cannon w/Autoloader
- Full Solution Fire Control



Brigade Configuration

	Qty Per Bde	ORF
ICV	128	2
ATGM	9	1
MC-B	36	1
RV	51	1
FSV	13	1
ESV	12	1
CV	27	1
MEV	16	0
NBCRV	3	0
MGS	27	2
	322	10

322
 + RTNs
 + TACP
 + EN PLs
 + EN Cdr

RV MC CV FSV

ESV MEV ATGM NBCRV



INFANTRY CARRIER VEHICLE



Armament
RWS (50 Cal or MK 19)
Smoke

Mobility
Top Speed – 60 mph
50m Dash – 9 sec.
Wheel Clearance – 21 in
Vertical Climb – 23 in
Gap Crossing – 78 in
Range – 330 miles (Cbt Ops)
Winch: Self Recovery

Survivability
High Hard Steel Structure
Protection: 14.5mm
RPG w/ add on armor
Spall Liner

C2
SINGARS
FBCB2
EPLRS
GPS
VIS/VIC

Deployability
C-130 – 1 ea
C-17 – 3 ea
C-5 – 4 ea

Key Characteristics

Configuration:	Combat (inches)	Shipping (inches)	Common STRYKER Characteristics:
Height:	122.88	103.6	Engine: 350 hp JP-8/Diesel
Width:	116.43	112.8	Transmission: Allison; Six FWD
Speeds, One Reverse			Brakes: Full Air, Wedge Actuated
Length:	286.3	286.5	Drivetrain/Suspension: 4&8 Wheel Drive; 4 Wheel Steer
w/ABS on 2&3 Axles			Driver
Manufactured by: General Dynamics Land Systems			Integrated
s Vision Enhancement (DVE) – Night IR Camera			Embedded Training Module
Crew: 2			Remot
Electronic Technical Manual			
Squad: 9-man			

Weapon Station: Day and Night (IR) Cameras



COMMANDER'S VEHICLE



Armament
 RWS (50 Cal)
 Smoke

Mobility
 Top Speed – 60 mph
 50m Dash – 9 sec.
 Wheel Clearance – 21 in
 Vertical Climb – 23 in
 Gap Crossing – 78 in
 Range – 330 miles (Cbt Ops)
 Winch: Self Recovery

Survivability
 High Hard Steel Structure
 Protection: 14.5mm
 RPG w/ add on armor
 Spall Liner

C2
 ABCS (MCS, AFATDS, ASAS)
 SINCGARS, EPLRS
 FBCB2
 GPS
 NTRD
 VIS/VIC
 SATCOM w/SOTM, HF Radio

Deployability
 C-130 – 1 ea
 C-17 – 3 ea
 C-5 – 4 ea

Key Characteristics

Configuration:	Combat (inches)	Shipping (inches)
Height:	122.88	103.65
Width:	116.43	112.8
Length:	290	290
Crew:	2 + 3	

The Upper Tactical Internet (TI) provides connectivity between SBCT Battalion/Squadron TOCs, mobile CMD nodes, and Brigade TOCs. The NTRD network provides link between Upper and Lower TI facilitating the exchange of ABCS (ASAS and MCS) information between TOCs at all levels.

The Lower TI digital backbone connects all FBCB2 equipped platforms and local unit TOCs via EPLRS and SINCGARS networks.

ABCS Upper TI systems include:

- **All Source Analysis System (ASAS):** ASAS receives processes large volumes of combat information, and sensor reports, including external sources. Provides targeting information, intelligence products and threat alerts.
- **Maneuver Control System (MCS):** MCS provides commanders ability to control OPS and develop/distribute plans, orders, and estimates for future OPS.
- **Advanced Field Artillery Tactical Data System (AFATDS):** AFATDS provides fully integrated FS C2 System that gives the Brigade Effects Coordination Officer (ECOORD) automated support for planning, coordinating, control, and execution of close support, counterfire, interdiction, and Joint Suppression of Enemy Air Defense (JSEAD) fires and effects.

MEDICAL EVACUATION VEHICLE



Armament

Smoke

Mobility

Top Speed – 60 mph
 50m Dash – 9 sec.
 Wheel Clearance – 21 in
 Vertical Climb – 23 in
 Gap Crossing – 78 in
 Range – 330 miles (Cbt Ops)
 Winch: Self Recovery

Survivability

High Hard Steel Structure
 Protection: 14.5mm
 Spall Liner

C2

SINGARS
 FBCB2
 EPLRS
 GPS
 VIS/MIC

Deployability

C-130 – 1 ea
 C-17 – 3 ea
 C-5 – 4 ea

Key Characteristics

Configuration:	Combat (inches)	Shipping (inches)	4 Litter Patients with Litter Lift System
Height:	101.65	93.78	6 Ambulatory Patients
Width:	114.39	106.39	Patient stability, life support and
monitoring systems:			
Length:	275.83	275.83	On board O₂
Crew: 3			MC4 – Hand Held
Medics Aide			
r LED dome and task lights			Interio

Conditioning kit being applied

roof for easier access to patients

Air

High deck



ENGINEER SQUAD VEHICLE



Armament
 RWS (50 Cal)
 Smoke

Mobility / Mobility w/ MEP
 Top Speed – 60 mph / 60 mph
 50m Dash – 9 sec. / 9 sec.
 Wheel Clearance – 21 in / 21 in
 Vertical Climb – 23 in / 18 in
 Gap Crossing – 78 in / 42 in
 Range – 330 miles / 325 miles
 Winch: Self Recovery



Survivability
 High Hard Steel Structure
 Protection: 14.5mm
 Spall Liner

C2
 SINCGARS
 FBCB2
 EPLRS
 GPS
 VIS/VIC

Deployability
 C-130 – 1 ea
 C-17 – 3 ea
 C-5 – 4 ea

Key Characteristics

Configuration:	Combat (inches)	Shipping (inches)	Mission Equipment Package:
Height:	125.1	105.7	SMP-Surface Mine Plow
Width:	153.6	112.0	MR-Mine Roller
Length:	298.5 (w/o MEP)	287.9	SOB - Straight Obstacle Blade
			AMP –
	Angled Mine Plow		MSD - Magnetic Signature
Crew: 2 + 6			LMS - Lane
Duplicator (Stand off = +/- 2 m)			Lane Width
Marking System for proofed lane identification			
113 in / 126 in / Clearing Speed: 8-10 mph			



RECONNAISSANCE VEHICLE



Armament
 50 Cal or Mk 19 on
 Power Assist Cupola
 Smoke

Mobility
 Top Speed – 60 mph
 50m Dash – 9 sec.
 Wheel Clearance – 21 in
 Vertical Climb – 23 in
 Gap Crossing – 78 in
 Range – 330 miles (Cbt Ops)
 Winch: Self Recovery

Survivability
 High Hard Steel Structure
 Protection: 14.5mm
 RPG w/ add on armor
 Spall Liner

C2
 SINGARS
 FBCB2
 GPS
 VIS/VIC

Deployability
 C-130 – 1 ea
 C-17 – 3 ea
 C-5 – 4 ea

Key Characteristics

Configuration:	Combat (inches)	Shipping (inches)	Long Range Advanced Scout Surveillance System
(LRAS3)			
Height: detection	128.4	103.8	Provides long range infrared target
Width:	153.6	112.0	and identification.
Length: SPOT reporting	287.9	287.9	Uses serial connectivity to FBCB2 for
			Common

LRAS3 sensor across Army for reconnaissance

RSTA Squad: 4
 Crew: 2
 Intel Augmentee: 1



FIRE SUPPORT VEHICLE



Armament

50 Cal on Power Assist Cupola
Smoke

Mobility

Top Speed – 60 mph
50m Dash – 9 sec.
Wheel Clearance – 21 in
Vertical Climb – 23 in
Gap Crossing – 78 in
Range – 330 miles (Cbt Ops)
Winch: Self Recovery

Survivability

High Hard Steel Structure
Protection: 14.5mm
RPG w/ add on armor
Spall Liner

C2

SINGARS
FBCB2
GPS
VIS/VIC

Deployability

C-130 – 1 ea
C-17 – 3 ea
C-5 – 4 ea

Key Characteristics

Configuration:	Combat (inches)	Shipping (inches)	Automated FIST C2 functions for Fire Support
planning,			
Height:	128.4	103.8	processing and executing.
Width:	153.6	112.0	Far target recognition, location, and
identification			
Length:	287.9	287.9	FS3 consists of the LRAS3 w/ Laser
Designation Module			(LDM)
and is common sensor with RV.			

Mission Equipment Package

Crew: 4
between FBCB2 and AFATDS

M707 Knight

SCU provides connectivity



ANTI TANK GUIDED MISSILE



Armament
 TOW Family of Missiles
 M240B MG on folding mount
 Smoke

Mobility
 Top Speed – 60 mph
 50m Dash – 9 sec.
 Wheel Clearance – 21 in
 Vertical Climb – 23 in
 Gap Crossing – 78 in
 Range – 330 miles (Cbt Ops)
 Winch: Self Recovery

Lethality
 Family of TOW Missiles
 Target Acquisition: Day
 Camera or Second Generation FLIR

Survivability
 High Hard Steel Structure
 Protection: 14.5mm
 RPG w/ add on armor
 Spall Liner

C2
 SINGARS, FBCB2, EPLRS
 GPS, VIS / VIC

Deployability
 C-130 – 1 ea
 C-17 – 3 ea
 C-5 – 4 ea

Key Characteristics

Configuration:	Combat (inches)	Shipping (inches)	Carries 10 TOW Missiles plus 2 Ready Rounds
Height:	137	106	Fires from under armor with
	minimal crew exposure at reload		
Width:	153	113	Mounts M240B with folding
	mount for TOW firing		
Length:	287	287	Uses Modified Improved Target
	Acquisition System		(MITAS) with

common sight picture to ITAS.

Crew: 4
Antenna design

STRYKER Unique folding



MORTAR CARRIER



Armament

120mm RMS / M240B MG
Smoke

Mobility

Top Speed – 60 mph
50m Dash – 9 sec.
Wheel Clearance – 21 in
Vertical Climb – 23 in
Gap Crossing – 78 in
Range – 330 miles (Cbt Ops)
Winch: Self Recovery

Lethality

RSTA, BTLN, and CO: Mounted 120mm Mortar
BTLN: Adds dismounted 81mm mortar
CO: Adds dismounted 60mm mortar

Survivability

High Hard Steel Structure
Protection: 14.5mm
Spall Liner

C2

SINGARS, FBCB2, EPLRS
GPS, VIS / VIC, MFCS

Deployability

C-130 – 1 ea
C-17 – 3 ea
C-5 – 4 ea

Ammunition Stowage

RSTA 120: 60
BTLN: 120/81 – 48/35
CO: 120/60 – 48/77

Key Characteristics

Configuration:	Combat (inches)	Shipping (inches)	120 mm Recoil Mortar System; mounted with soft recoil
Height:	125	106	Mounts Mortar Fire Control
Width:	153	107 (boxes removed)	digital fire missions and provides
Length:	297	287	Fires all US 120 mm Mortar
System computer; Receives gun as FDC capability.			

Fire rate - 16 Rounds per minute
Crew: 5
4 Rounds per minute (up to 60 rnd)

Initial
Sustained Fire Rate –

NBC RECONNAISSANCE VEHICLE



Key Characteristics: (NBCRV Configuration)

Configuration	Combat (inches)	Shipping (inches)
Height:	126.4 in	103.6 in
Width:	134.1 in	109 in
Length:	290.6 in	289 in

Engine: 350 hp JP-8/ Diesel (Caterpillar)
Transmission: Allison, 6 Speed Automatic
Brakes: 5 inch ABS
Other: 8 Wheel Drive; 4 Wheel Steering
Crew: 4



Design: GDLS

Assembly: EMD- GDLS
Sterling/ Prod'n - ANAD

HULL

Lower: LONDON

Upper: LIMA

C2

SINGARS
EPLRS
GPS
FBCB2

Deployability

C 130 – 1 ea
C 17 – 3 ea
C - 5 – 4 ea

Armament

RWS (50 Cal)
Smoke

Mobility

Top Speed – 60 mph
50m Dash – 9 sec.
Wheel Clearance – 21 in
Vertical Climb – 23 in
Gap Crossing – 78 in
Range – 330 miles (Cbt Ops)
Winch: Self Recovery

Survivability

High Hard Steel Structure
Protection: 14.5mm
Spall Liner
RPG w/add on SLAT

NBC Sensor Components

Chemical Biological Mass Spectrometer (CBMS)
Joint Biological Point Detection System (JBPDS)
Joint Service Lightweight Standoff Chemical Agent Detector (JSLSCAD)
NBC Sensor Processing Group (including METSMAN)
Chemical Vapor Sampling System (CVSS)
Automatic Chemical Agent Detection Alarm (ACADA)
Radiation, Detection, Identification and Computation (RADIAC)



MGS Stryker Capability

- 1 x Vehicle Commander
- 1 x Driver
- 1 x Gunner



ARMAMENT

- 105mm Main Gun
- 1 x M2 MG on VC station
- 1 x M240 7.62mm MG (coax)
- 2 x M6 Smoke Grenade Launchers
- Stowed Ammo: 18 105mm MG rounds, 3400 x 7.62 rnds, 400 x .50 cal rnds, 16 x 66mm Smoke Grenades

PERFORMANCE

- 4 types of 105mm tactical ammunition
 - HE (high explosive) to destroy hardened enemy bunkers, MG and sniper positions, and to create openings in walls for dismounted infantry
 - KE (kinetic energy) to destroy a variety of Level II armoured vehicles
 - HEAT (high explosive anti-tank) to destroy a variety of thin-skinned vehicles and provide fragmentation effects
 - AP (anti-personnel canister) to defeat attacking dismounted infantry in the open
- Maximum speed 60 MPH
- Maximum range 330 KM (40 MPH)
- Tires Central Tire Inflation System with run flats
- Hydraulic self recovery winch
- NBC detectors and ventilated face mask system

SURVIVABILITY

- High hard steel structure
- MEXAS ceramic layer
- IBD passive RPG add-on

AIR TRANSPORTABLE

- C-130 (1 x Stryker)
- C-17 (2 x Stryker)
- C-5A (3 x Stryker)

COMMUNICATIONS

- FBCB2/EPLRS
- GPS PLGR
- SINCGARS radio

OPTICS

- Main Gun FLIR
- Commander's Panoramic Viewer (CPV)
- Driver Vehicle Enhancement (DVE) Screen
- 15 M45 Periscopes (3 Driver, 4 Gunner, 8 VC)



Combat Vehicle Lift Comparisons

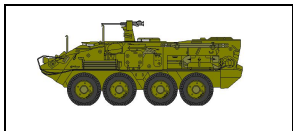


H - 290ea / J - 65ea

C-130 H/J*

480" long
119" wide
108" high

"H" MAX: 40,500 lbs
"J" MAX: 42,000 lbs



C-17* 157ea

784" long
216" wide
148" high fwd of wing
162" high aft of wing

MAX: 150,000 lbs



C-5* 111ea

1,454" long
216" wide
156" high

MAX: 264,000 lbs

3,200 NM Critical Deployment Leg
Payload 130,000 lbs

OR

OR

OR

3,200 NM Critical Deployment Leg
Payload 180,000 lbs

OR

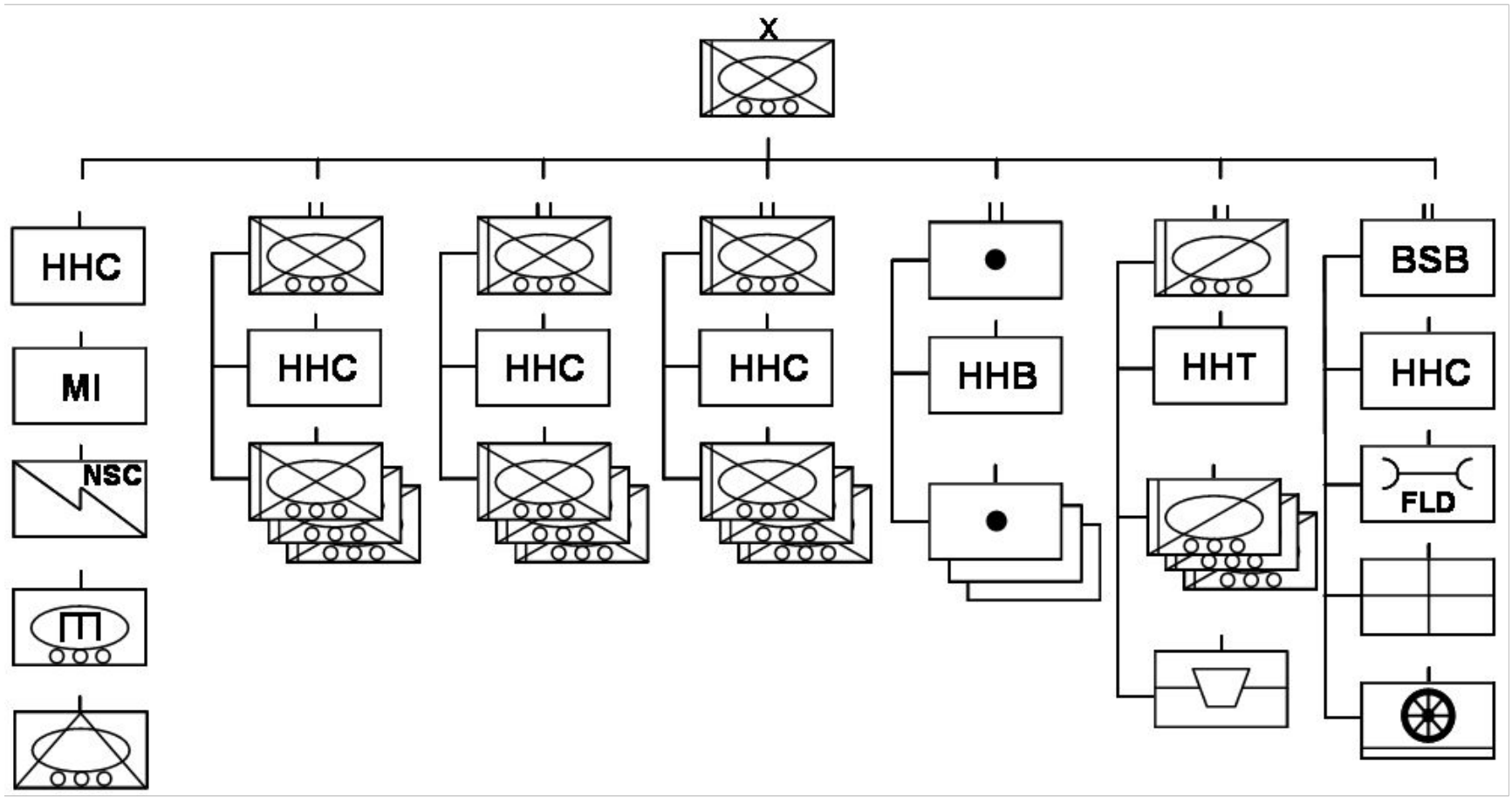
OR

OR

All dimensions are actual physical limits. Six inches of clearance is needed between vehicles and aircraft structure

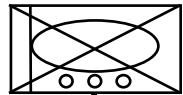


SBCT Organization

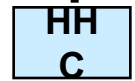




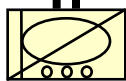
Stryker Brigade Combat Team



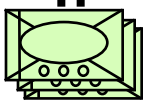
~4K Soldiers



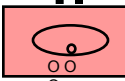
Headquarters



RSTA



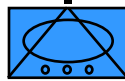
Infantry Battalions



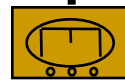
Fires Battalion



Support Battalion



Anti-Tank Company



Engineer Company

<p>Stryker HQs</p> <ul style="list-style-type: none"> - Increased Staff - C2 Enhancements - Deputy Commander - PSYOPS/Civil Affairs - Aviation & Air Defense 	<p>Recon Squadron</p> <ul style="list-style-type: none"> 3 x Recce Troops * 3 x Recce PLTs Stryker-RV - LRAS3 - CHATS / Recce HUMINT ITRT * 3 x Mortar Sect (1) 20n 5 x TACT 	<p>Infantry Battalions (x 3)</p> <ul style="list-style-type: none"> 3 x ICV Companies 3 x MGS Platoons 1 x Mortar Platoon 1 x Scout Platoon Over 127 Infantry Carrier Vehicles     <p>14 X 120mm Mortar Carriers 27 X Mobile Gun System Snipers: SQDs at BN / TMs at CO</p>			<p>Fires Battalion</p> <ul style="list-style-type: none"> Joint Fires Cell 5 x Joint Tactical Air Control Parties (Infantry, Recon Battalions and Brigades) 18 x 155mm Howitzer (3 Batteries) 	<p>Anti-Tank Company</p> <ul style="list-style-type: none"> 9 Stryker Anti-Tank vehicles 	<p>Engineer Company</p> <ul style="list-style-type: none"> 9 Engineer Squads 3 Mobility Squads w/ Various Equipment 
<p>HHC</p> <ul style="list-style-type: none"> - Military Police C2 Cell 	<p>1 x Surveillance Troop * 1 x TUAV PLT - 4 x</p> <p>Shadow 200 * 1 x MS PLT - 4 x</p> <p>PR * 1 x GSR - 3 x GSR</p>	<p>Military Intel CO</p> <ul style="list-style-type: none"> * Integration & Analysis PLT <ul style="list-style-type: none"> - Trojan Spirit - Common Ground Station * HUMINT PLT <ul style="list-style-type: none"> - TACHUMINT Teams - Operational Mgt Teams 	<p>Target Acquisition</p> <ul style="list-style-type: none"> Counterfire and Counter-Mortar Radars Target Acquisition Platoon 			<p>Support Battalion</p> <ul style="list-style-type: none"> Medical Company 	<p>Distribution Company</p> <ul style="list-style-type: none"> Maintenance Company  

/ REMBASS * 1 x NBC Recon



SBCT Capabilities



- Three infantry battalions for maneuver (vs. only two in the HBCT and IBCT)
- Infantry battalions contain organic armor in their MGS platoons
- In-theater mobility
- Lower usage rate of class III supplies than the HBCT, with nearly the same mobility
- Greater survivability than an IBCT
- Ability to conduct forced entry or early entry operations.
- RS with organic HUMINT Soldiers.

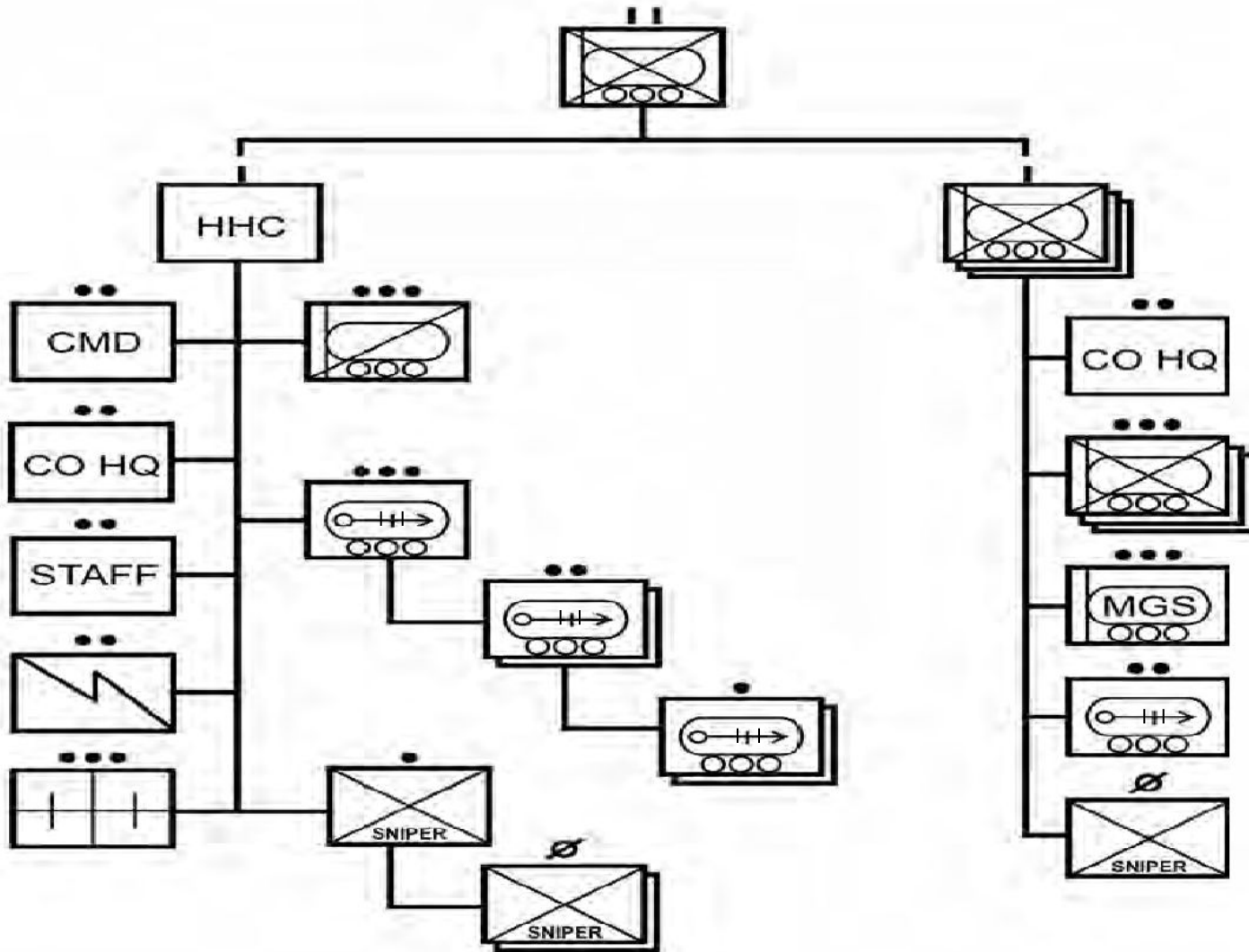


SBCT Limitations



- The SBCT does not have the firepower or inherent protection of HBCTs
- The SBCT requires more aircraft to deploy than an IBCT
- The BSB does not have FSCs for each maneuver battalion
- Possesses no organic gap crossing capability
- There is no BSTB for C2 of brigade troops

SBCT Battalion Organization





SBCT IN Battalion Capabilities



- Conduct offensive, defensive, stability, and support operations in all environments across the spectrum of conflict.
- Screen and guard friendly units.
- Exploit success and pursue a defeated enemy as part of a larger formation.
- Tactically mobile.
- Seize, secure, occupy, and retain terrain.
- Destroy, neutralize, suppress, interdict, disrupt, block, canalize, and fix enemy forces.
- Breach enemy obstacles.
- Feint and demonstrate to deceive the enemy.
- Reconnoiter, deny, bypass, clear, contain, and isolate (terrain or enemy).
- Operate in conjunction with IBCT/HBCT, joint, coalition, interagency, multinational, or special operating forces.
- Conduct small-scale operations in all types of environments.
- Conduct amphibious and air assault operations.
- Conduct sustained combat operations for 72 hours in all environments.

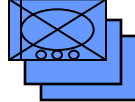
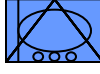
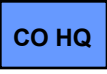
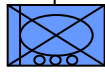


SBCT Battalion Limitations



- Vulnerable to enemy direct fires, NBC, and enemy air.
- Austere CSS structure may require external support for full-spectrum operations.
- Dense jungles and forests, very steep and rugged terrain, and significant water obstacles.
- Vehicles are designed for transport more than direct fires engagement against conventional forces.
- Reduced C2 during dismounted operations.
- Consumption of supply items is high, especially Classes III, V, and IX.

Rifle Company Task Organization



WEAPON SYSTEMS

M4 x 156 M9 M2 x 20
 x 20 M14 MK19 x 6 60mm
 x 9 M24 x 1 x 2 120mm x 2
 M203 x 19 M249 PEQ-2A - 104
 x 18 M107 x 1 PAC-4 - 66
 M240 x 11 AN/PVS-14 - 83
 Javelin x 9 AN/PVS-7B - 83

PERSONNEL

CO CDR XO RIFLEMAN x 18
 1SG PL MORTAR MAN x 10
 (IN) X 3 PL MGS x 11 SNIPERS
 (AR) X 1 PSG x x 3 FSO
 4 SQD LDR x FO x 3 NBC
 13 FIRE TL x 18 NCO SUPPLY NCO
 AUTO RIFLE x 18 ARMORER
 GRENADEIER x 18

MORTAR SECTION



DVR

STRYKER MC-B W/ M121 120mm
 SULTAN MTR (MOUNTED)

M224 60mm MTR (DISMOUNTED)



SECTION GN AG AG
 LDR R



DVR

STRYKER MC-B W/ M121 120mm
 SULTAN MTR (MOUNTED)

M224 60mm MTR (DISMOUNTED)



SECTION GN AG AG
 LDR R

RIFLE PLATOON (x 3)



STRYKER ICV (M2)



DVR VC



STRYKER ICV (MK19)



DVR VC



STRYKER ICV (M2)



DVR VC



STRYKER ICV (MK19)



DVR VC

PLT HQ
 PL PSG RTO FO

SNIPER TEAM

SNIPER XM107 SNIPER M24 SNIPER M203

CO HQ SECTION

CO CDR'S STRYKER ICV (M2)

DVR VC

CO XO'S STRYKER ICV (M2)

DVR VC XO

STRYKER FSV

DVR FSO FSNCO RTO

STRYKER MEV

DVR VC ME ME

CO CDR

1SG SUPPLY SGT COMM O SGT NB C SGT ARMORER

MGS PLATOON



STRYKER ATGM



PL DVR GN AG
 R



STRYKER ATGM



PSG DVR GN AG
 R



STRYKER ATGM



SL DVR GN AG
 R

RIFLE SQD'S (x3)

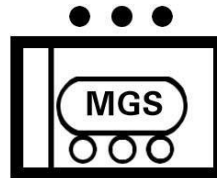
SL TL G AR R/A TL G AR D
 M4 M4 M203 M249 T M4 M4 M203 M249 M
 M4

WPNS SQD

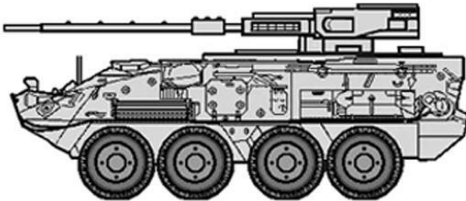
SL MG AG A MG AG A
 M4 M240 M4 B M240 M4 B
 M4



SBCT MGS Platoon Organization

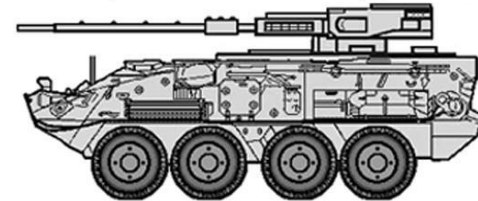


105MM MAIN GUN
.50 CAL MACHINE GUN
7.62MM MACHINE GUN



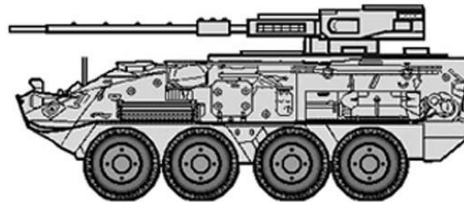
MGS 1
PLATOON LEADER
GUNNER
DRIVER

105MM MAIN GUN
.50 CAL MACHINE GUN
7.62MM MACHINE GUN



MGS 2
VEHICLE COMMANDER
GUNNER
DRIVER

105MM MAIN GUN
.50 CAL MACHINE GUN
7.62MM MACHINE GUN



MGS 3
PLATOON SERGEANT
GUNNER
DRIVER



HHC Composition



- 1 x Mortar Platoon
 - 4 x Mortar Carrier Strykers (MCV-B Variant)
 - 4 x 81mm mortars, 4 x 120mm mortars
- 1 x Recon Platoon
 - 4 x Recon Strykers – LRAS equipped
- 1 x Medical Platoon
 - 1 x MEV (3x MEVs detached – 1 MEV to each IN company)
- 1 x Sniper Squad (2 x 3-man sniper teams)
- 1 x TAC (2x Command Variant Strykers – BC, S3)
- 1 x JTAC Team with Stryker
- 1 x ORF Stryker (FSV)



Shoot

- **Combined Arms down to the company level**
 - **MGS PLT equipped with ITAS and TOW-2B missiles**
 - **2 M2 .50 cal MG and 2 MK-19 per infantry platoon**
 - **1 Javelin anti-armor missile per rifle squad**
 - **Snipers at Company level**
 - **Company sniper teams**
 - **Squad Designated marksman**
 - **Organic FIST teams**
 - **Mortars at company level**
 - **120 mm x 2**
 - **60 mm x 2**





Move



Stryker Data:

- **Height: 2.64 m (8.72 ft)**
- **Width: 2.72 m (8.97 ft)**
- **Combat Weight: 22 tons**
- **Cruising range: 330 miles**
- **Top speed: 60-70 mph**
- **Fuel capacity: 50 gal.**
- **Mileage: 6.6 mpg**
- **Central Tire Inflation System (CTIS) allows vehicle to keep moving with up to four tires destroyed**





Communicate

- TOC: ABCS based, FBCB2 / MCS centric ***unable to message to or from BFT / 4ID FBCB2 systems due to incompatible software versions and database issues,** SATCOM, HF voice / chat, FM, SIPR, NIPR
- TAC: SATCOM on the move, HF, FBCB2, SIPR over Near-Term Digital Radio (NTDR), MCS
- STRYKER C4ISR equipment



FBCB2
PM FBCB2
On Hand



SINGARS ASIP
With INC
PM TRCS
On Hand



PLGR
PM GPS
On Hand



EPLRS
PM TRCS
On Hand



Combat Service & Support



CL1: Stryker BN carries 3DOS MREs and 3DOS Water Bottles to the fight. Planning factor of 700 personnel.

CL3b:

- **Capacity:** Stryker tank is 53 gallons of JP8, in addition we carry (2) fuel cans for a maximum capacity of 63 gallons per Stryker.
- **Consumption:** approx 5mpg while moving with full combat load under normal driving conditions.
- **Range:** 265 miles on a full tank; 315 miles on a full tank and (2) fuel cans, or approx 3 days when idling with minimal movement.
- **BN re-supply:** A Stryker BN (75 Strykers) requires 4,000 gallons to refuel all Strykers or 4,750 gallons to fill all Strykers and fuel cans.

CL3p: The Stryker 3DOS basic load is as follows:

STRYKER ABL			Stryker (ea)	Company (20)	Battalion (75)
NOUN	TYPE	NSN	UI	UI	UI
ENGINE	15W40	9150-01-438-6076	6 QT	120	450
TRANSMISSION	DEXTRON III	9150-01-353-4799	2 QT	40	150
HYDRAULICS:	MIL 5606	9150-00-252-6383	2 QT	40	150
GEAR OIL:	80W90	9150-01-035-5392	1QT	20	75
COOLANT	ANTI-FREEZE	6850-01-464-9125	1 Gallon	80	75

- **Rate of CL3p Consumption:** The Stryker will consume 1.5 quarts of 1540 per day under normal operations. This equals about 30 gallons of 1540 per day consumed by a BN.
- **Contingencies:** We maintain an additional 3 DOS of 1540 engine oil, coolant, and 5606 hydraulic fluid on our LHS for contingencies; these are the fluids that most likely require mass replacement.

CL4: Carried on Strykers

CL5: ABL carried on Strykers

QUESTIONS?

