

PHRASAL VERBS

FIND THE CORRECT PARTICLE



OUR HOUSE WAS BROKEN **INTO** _____
LAST NIGHT.

PHRASAL VERBS

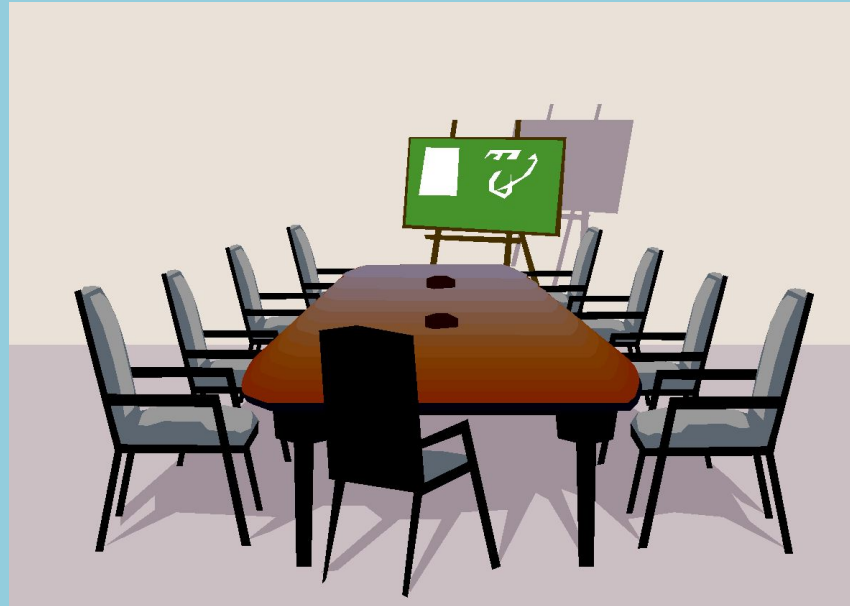
FIND THE CORRECT PARTICLE



THE HOUSE BURNT **DOWN** IN
NEXT TO NO TIME.

PHRASAL VERBS

FIND THE CORRECT PARTICLE



THE MEETING WAS CALLED ~~OFF~~
----- AT THE LAST MINUTE.

PHRASAL VERBS

FIND THE CORRECT PARTICLE



I WISH YOU WOULD TRY TO CALM
DOWN _____, IT'S NOT THAT BAD!

PHRASAL VERBS

FIND THE CORRECT PARTICLE



**DON'T STOP NOW, CARRY ON
WITH THE PROJECT, IT'S GOOD!**

PHRASAL VERBS

FIND THE CORRECT PARTICLE



**TRY TO CHEER UP BEFORE
YOUR PARENTS GET HERE.**

PHRASAL VERBS

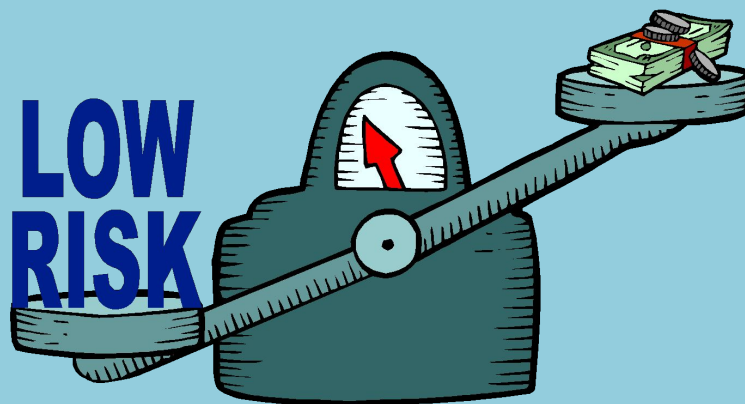
FIND THE CORRECT PARTICLE



THE FACTORY CLOSED **DOWN _____**
LAST YEAR.

PHRASAL VERBS

FIND THE CORRECT PARTICLE



**YOU CAN COUNT ME OUT! IT'S
TOO RISKY!**

PHRASAL VERBS

FIND THE CORRECT PARTICLE



**JUST CROSS ~~OUT~~ THE WORDS
WHICH ARE NOT CORRECT.**

PHRASAL VERBS

FIND THE CORRECT PARTICLE



THEIR ELECTRICITY WAS CUT OFF
----- BECAUSE THEY COULDN'T
PAY THE BILL

PHRASAL VERBS

FIND THE CORRECT PARTICLE



**THEY HAD TO CUT DOWN A
LOT OF TREES TO MAKE THE NEW
ROAD.**

PHRASAL VERBS

FIND THE CORRECT PARTICLE



I USED TO LOVE DRESSING **UP** _____
WHEN I WAS A CHILD.

PHRASAL VERBS

FIND THE CORRECT PARTICLE



**My PARENTS MADE US EAT ALL
OUR FOOD **UP** _____ BEFORE LEAVING
THE TABLE.**

PHRASAL VERBS

FIND THE CORRECT PARTICLE



I COULDN'T FIGURE **OUT**
WHAT HE MEANT TO SAY.

PHRASAL VERBS

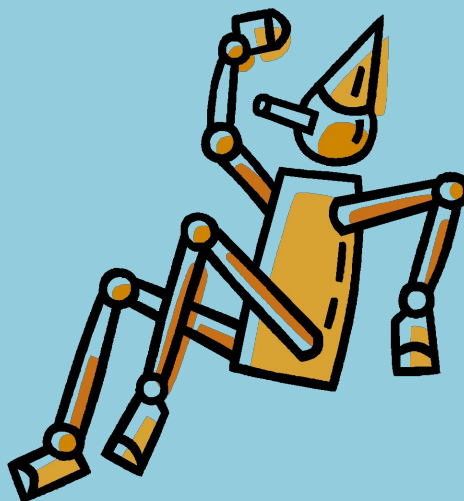
FIND THE CORRECT PARTICLE



THE POLICE SOON FOUND OUT
WHERE THE ROBBERS WERE
HIDING.

PHRASAL VERBS

FIND THE CORRECT PARTICLE



I TOLD HER TO GIVE THE TOY
_____ **BACK** _____ TO THE OTHER CHILD.

PHRASAL VERBS

FIND THE CORRECT PARTICLE



I DON'T KNOW THE ANSWER, I
GIVE **UP** -----!

PHRASAL VERBS

FIND THE CORRECT PARTICLE



**MAKE SURE NOT TO LEAVE
ANYONE WHEN YOU
SEND THE INVITATIONS.**

PHRASAL VERBS

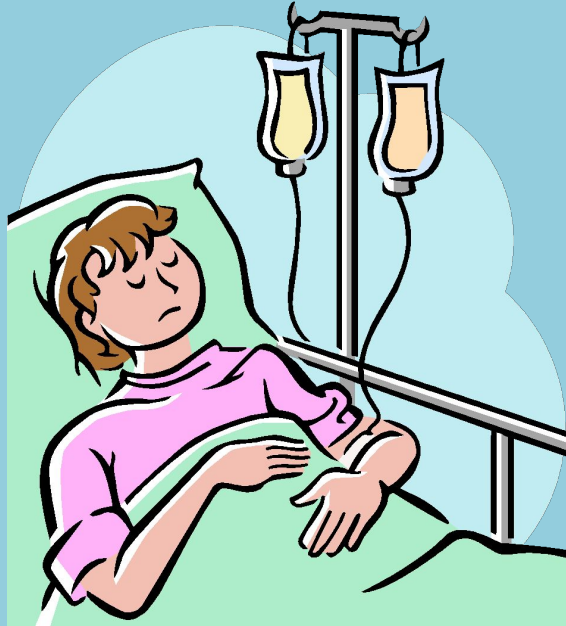
FIND THE CORRECT PARTICLE



**SHE'LL BE SO UPSET IF YOU
LET HER **DOWN**_____**

PHRASAL VERBS

FIND THE CORRECT PARTICLE



**SHE WENT WHITE AND THEN
PASSED **OUT****

PHRASAL VERBS

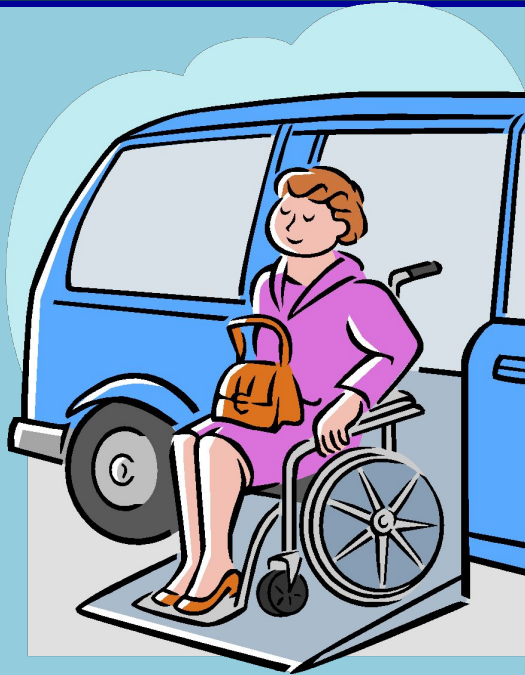
FIND THE CORRECT PARTICLE



**THANKS FOR THE MONEY! I'LL
PAY YOU ~~BACK~~ TOMORROW.**

PHRASAL VERBS

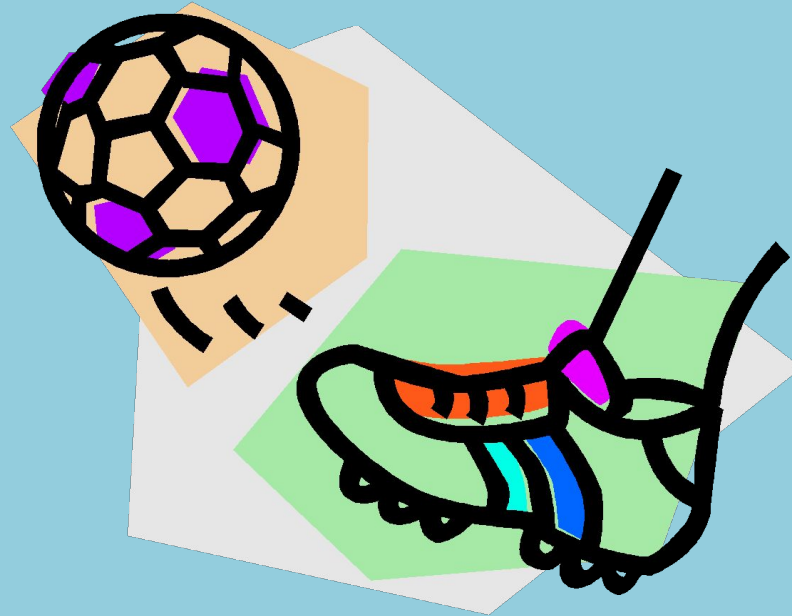
FIND THE CORRECT PARTICLE



I'LL PICK YOU **UP** AT 8 P.M.

PHRASAL VERBS

FIND THE CORRECT PARTICLE



THE FOOTBALL MATCH WAS PUT
___**OFF**___ BECAUSE OF THE RAIN.

PHRASAL VERBS

FIND THE CORRECT PARTICLE



SHE PUT A NICE DRESS **ON.....**
AND WENT OUT.