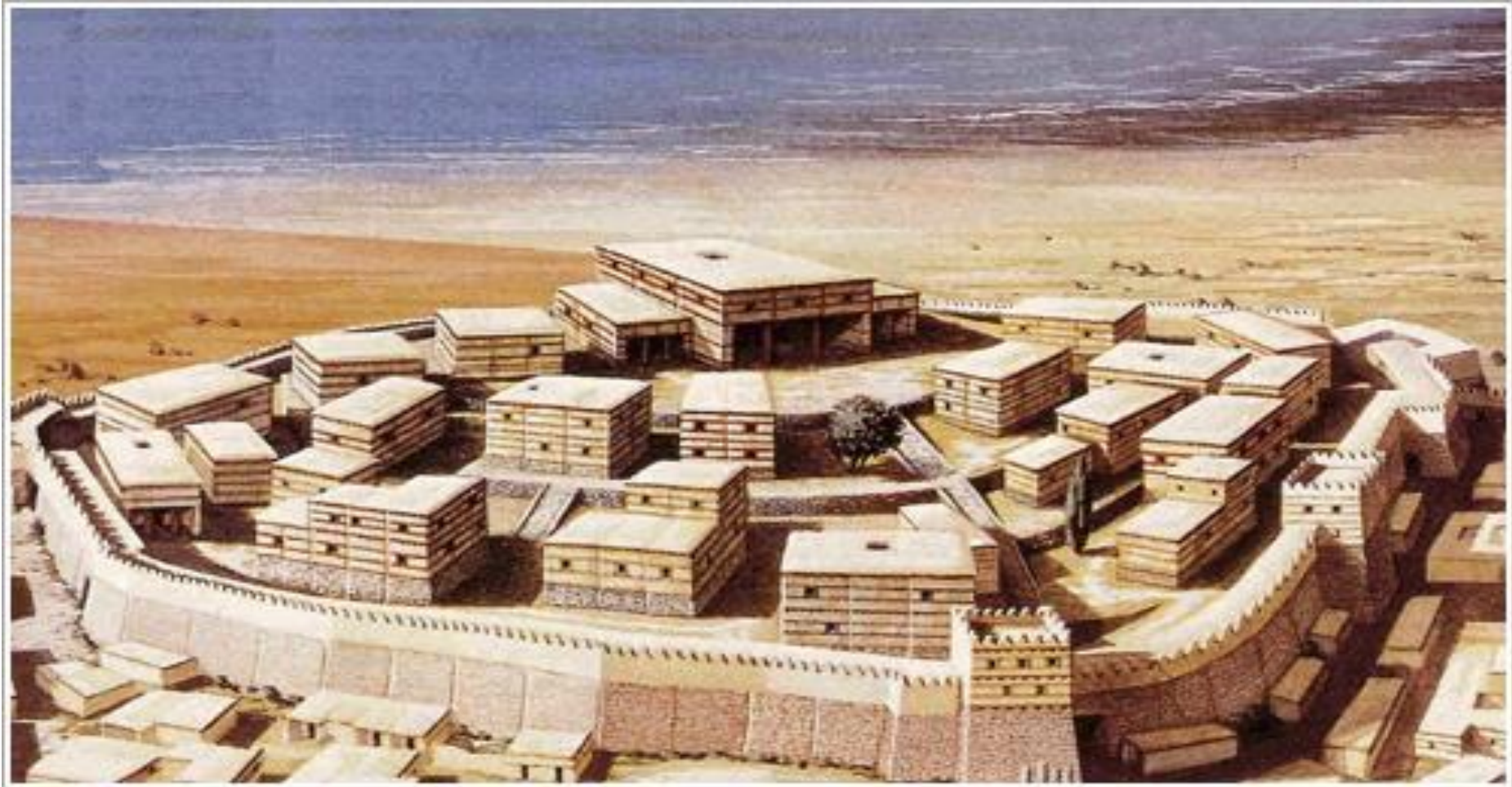
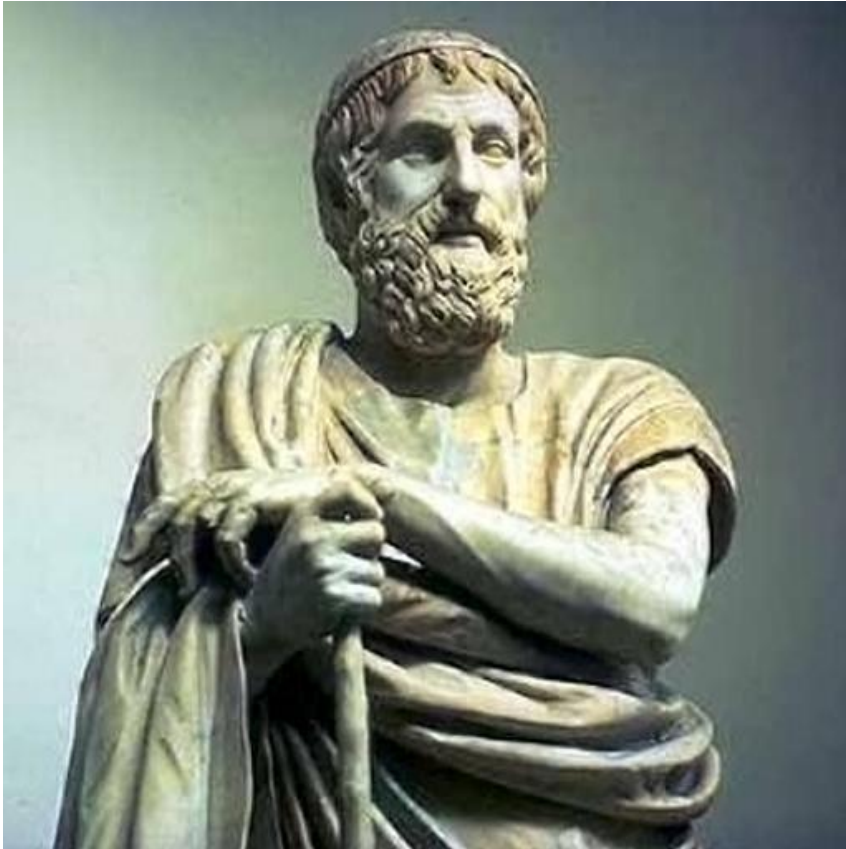


# Excavations in Troy



# «The Iliad» of Homer



- Troy is a mythical city, celebrated in the poem "Iliad" by Homer. A long time Troy was considered a myth, a figment of the imagination of the great Homer, the first who mentioned about it in the Iliad and Odyssey.

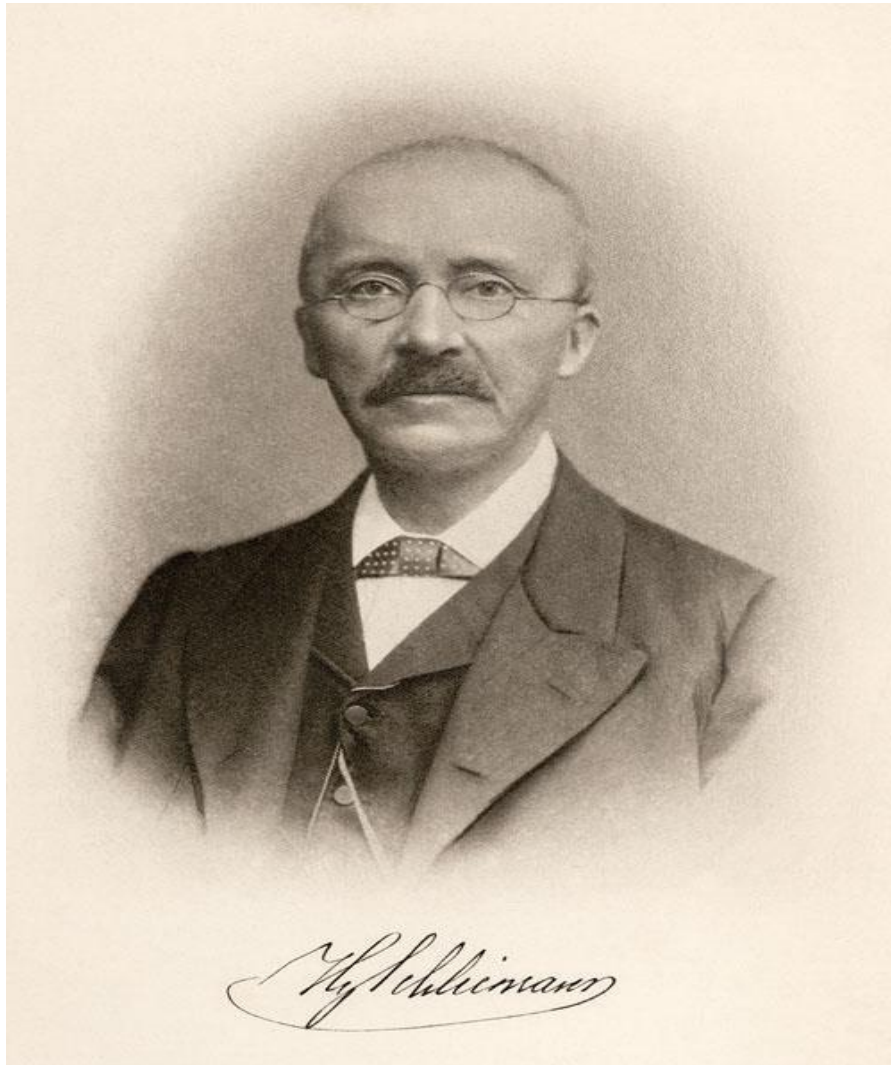


# The geographic location of Troy



- Troy, also called Ilion, the ancient fortified settlement in Asia Minor on the Peninsula of Troas on the coast of the Aegean sea, near the entrance to the Dardanelles in the Turkish province of Canakkale.

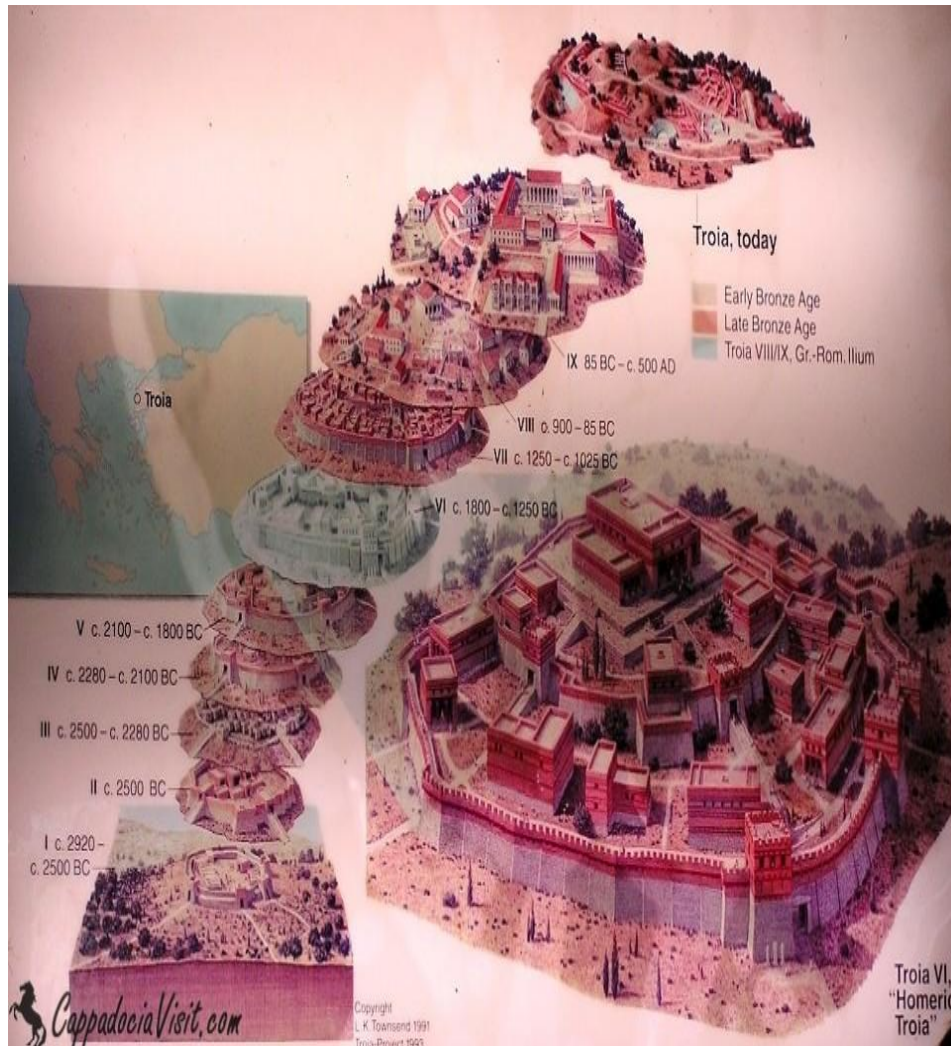
# Johann Ludwig Heinrich Julius Schliemann



- The most famous of archaeologists is Heinrich Schliemann , 140 years ago, he discovered the ancient city of Troy and found the famous "treasure of Priam".

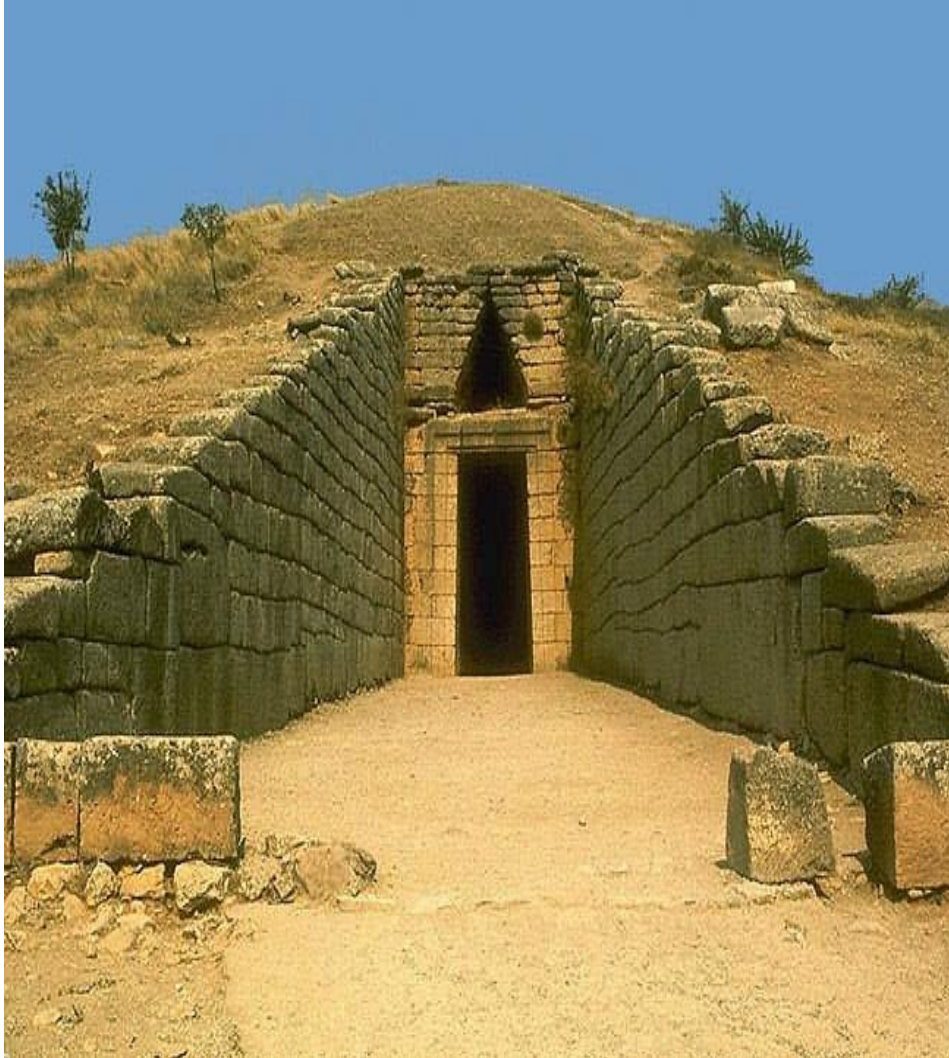
2900 г. до н. э. - 400 г. н. э.

- Scientists have counted 9 layers of Troy development from 2900 BC to 400 AD. I would like to focus on the period 2600-2300 BC, it is in this "layer" of the times that in 1873, the German archaeologist Schliemann found the famous Trojan treasure, which consisted of numerous weapons, copper trinkets, pieces of jewelry, gold vessels, gravestones and prehistoric renaissance period.



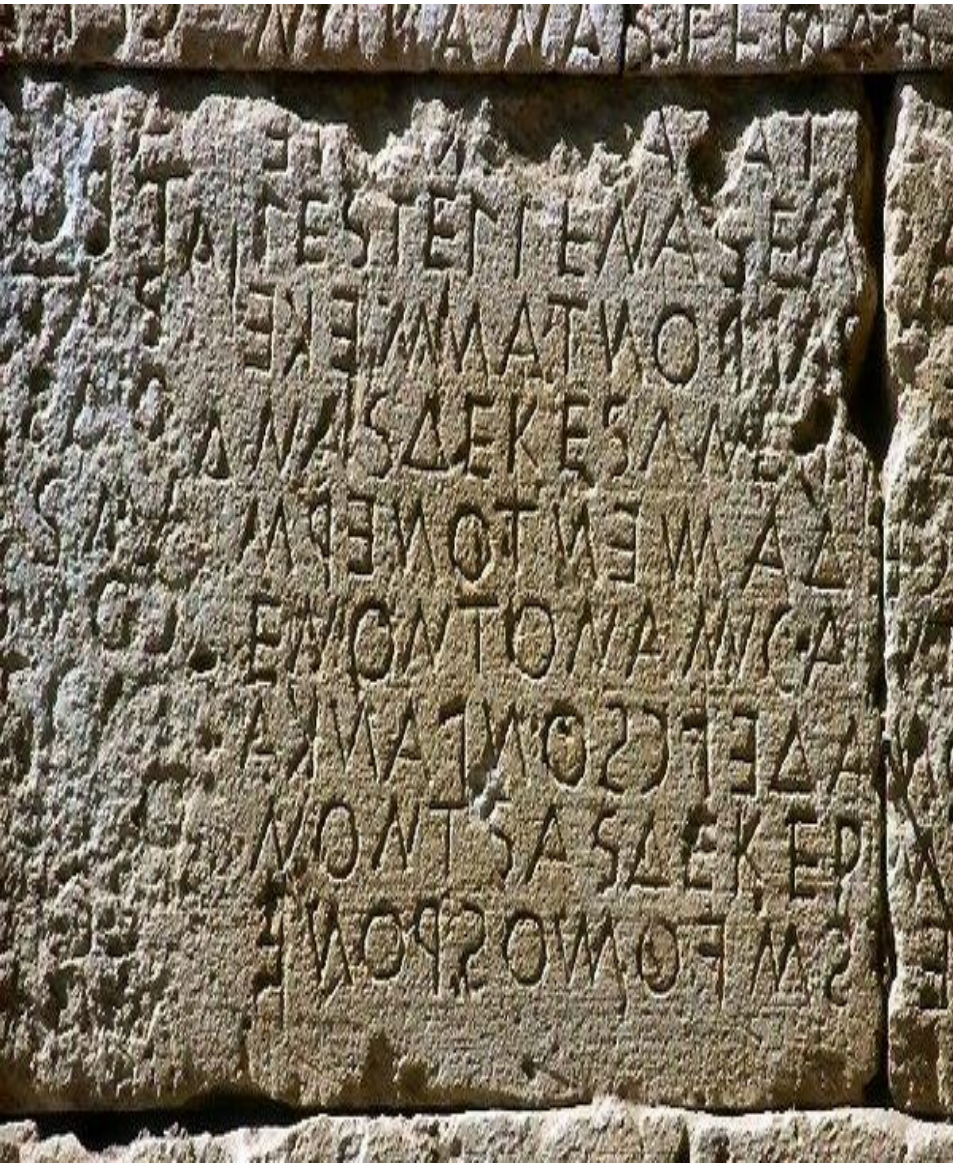


# The Royal tombs at Mycenae



- May 31, 1873, Schliemann had discovered the "Treasure of Priam", named after one of the kings of Troy. Jewelry, military armor, statues and household items, were all of gold. Of particular value to archaeologists is found a gold death mask.

# Language and script



- In the mid-1980s, Kazanskiy N. N. has published several pieces of clay pottery from Troy with strange characters that resembled the Cretan letter — he called these the signs of a Trojan email.



# "Gold Of Troy"



- 7 Feb 1882 in two halls of the Berlin Museum of arts and crafts was inaugurated the exhibition "Gold of Troy". By 1896, in the collection of Schliemann, there were 8455 exhibits from Troy, not counting the "treasure of Priam". After the death of Schliemann left a will, under which Germany became the heir to his collection.



# Государственный музей изобразительных искусств имени А. С. Пушкина



- После окончания войны с Германией в 1945 г. «сокровища Приама» были вывезены из Германии в Россию и по сей день находятся в русских музеях. Если кто-то из вас захочет увидеть те археологические находки Трои, то самое близкое место для созерцания это **музей имени А. С. Пушкина** в Москве.

# The search continues!



- In the twenty-first century on the site of Troy studied every meter, but the young adventurers still have a chance for new discoveries and unexpected discoveries, because fortune favors the brave!