



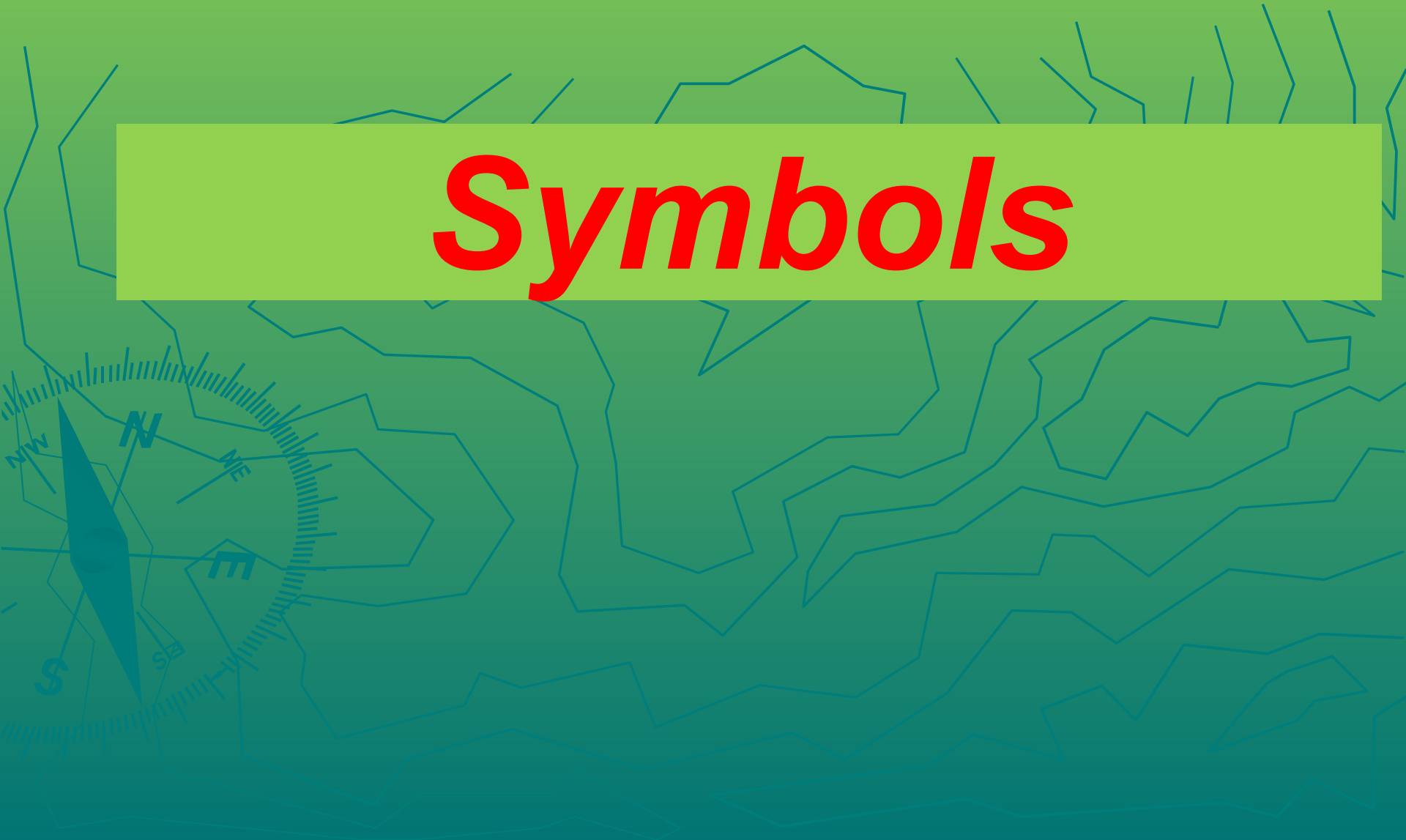
# *Welcome to Canada*







# ***Symbols***



**a maple leaf**





*Ottawa is  
the capital of Canada*



Drawing by Wm. A. Norman, © 1994 Encyclopaedia Britannica, Inc.

# *The National Emblem*





*Six distinct time zones*

*Some part is beyond the Arctic Circle*

*Canada is the world's second largest country after Russia and the largest country in the Western Hemisphere.*

# Great Lakes





# *Cities*

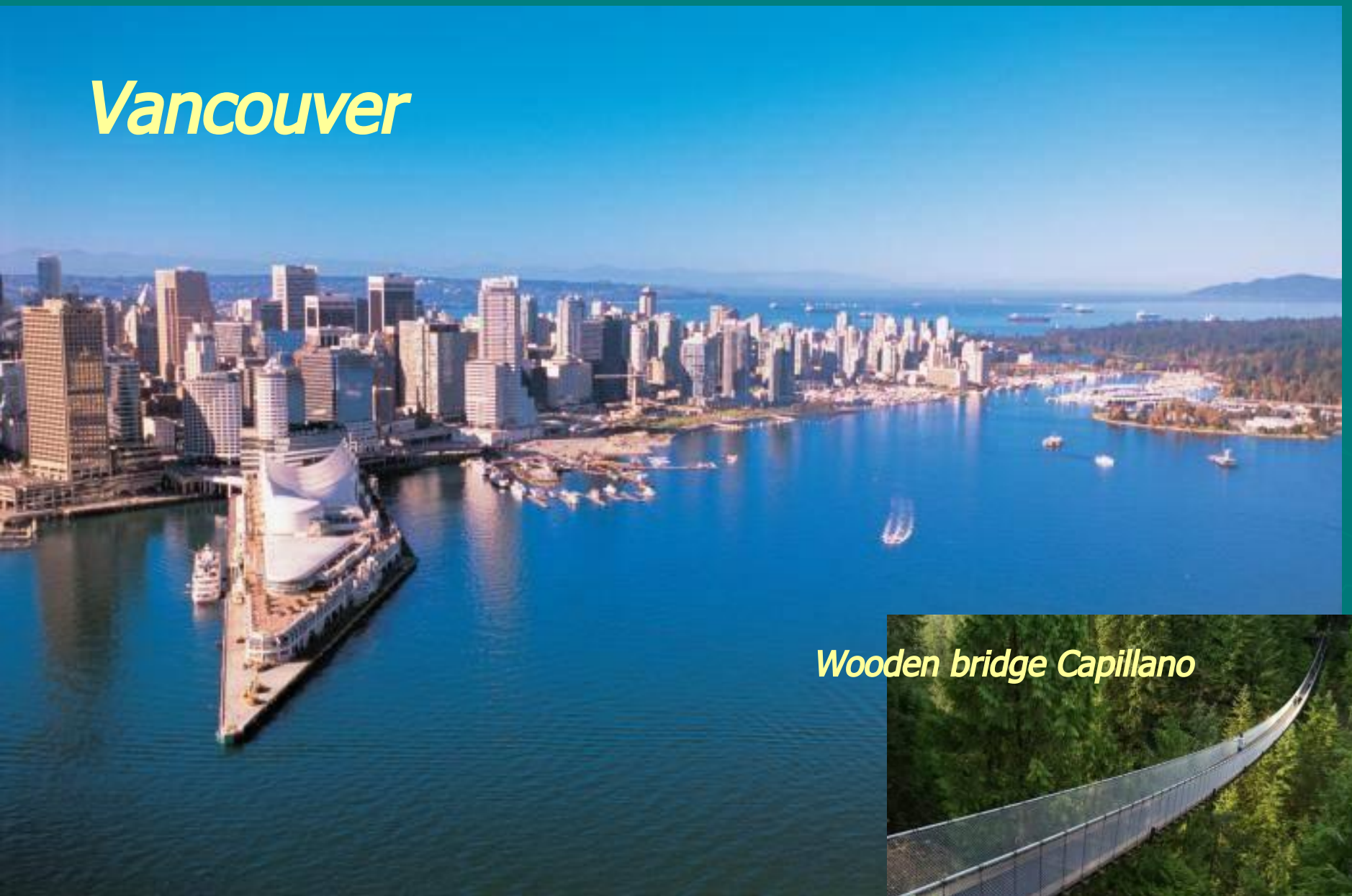
- ▶ **Toronto**
- ▶ **Montreal**
- ▶ **Vancouver**
- ▶ **Ottawa**

*Ottawa*





# *Vancouver*



*Wooden bridge Capillano*





***Toronto***



# *Montreal*





# Canada is rich in



*oil*



*gas*



*nickel*



*wood*



*coal*



*iron ore*



*agricultural products*



*copper*



*gold*



# *Sights*



# *Toronto*



**CN Tower**



**Royal Ontario  
Museum**





**Fort York Historical Site**



**Niagara Falls**



**High Park**





**Toronto Zoo**



**Roy Thomson Hall**



**Ontario Science Centre**

# *Montreal*

**Stock Exchange Tower**



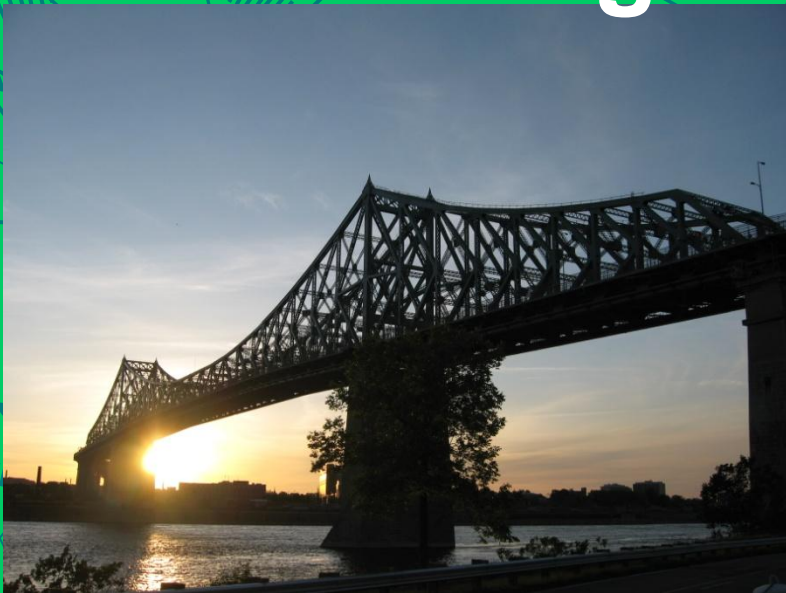
**Saint Joseph's Oratory of Mount Royal**



# Olympic Stadium



# Cartier Bridge



# Notre-Dame Basilica





# Mount Royal Park



# Botanical Garden



# Museum of Fine Arts

# *Vancouver*



**Stanley Park**



**Art Gallery**





**Vancouver  
Museum**



**BC Place  
Stadium**





# Burrard Street Bridge



# Olympics Clock

# *Ottawa*



**Parliament**



**Chateau Laurier**





**Hog's Back Falls**



**Canada Museum of  
Nature**



**Ottawa Civic Centre**





# Byward Market



# National Gallery





# *Canadian Animals*



**Beaver**



**Caribou**



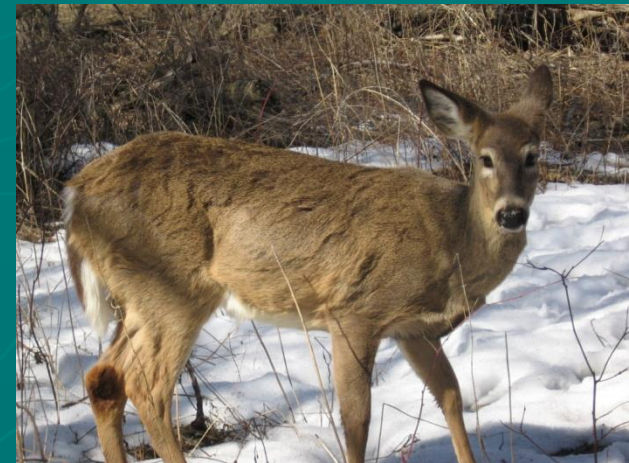
**Coyote**



**Lynx**



**Raccoon**



**Deer**





**Skunk**

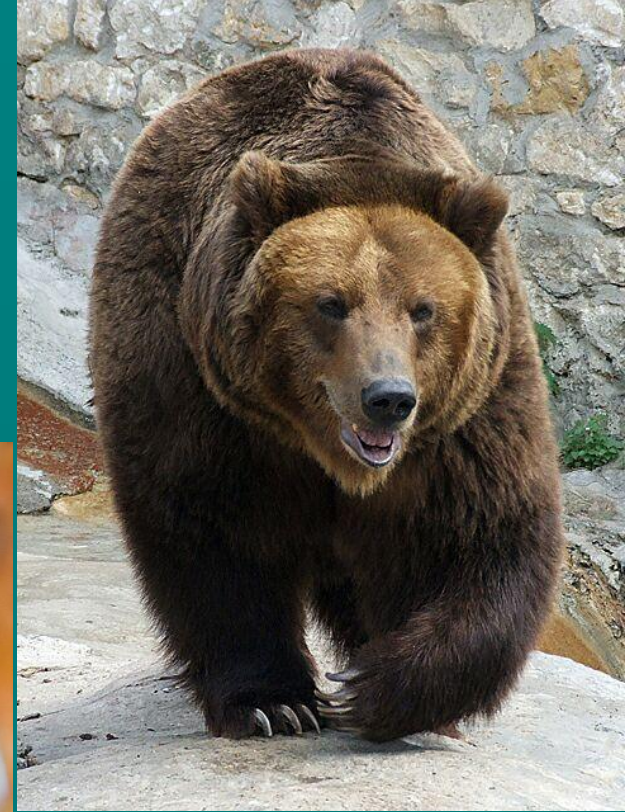


**Squirrel**



**Mink**

**Bear**



**Buffalo**



# *The Ice Hotel*



# *Dotted Lake*





# *Prince Edward's Island*

