

1C:ERP 2

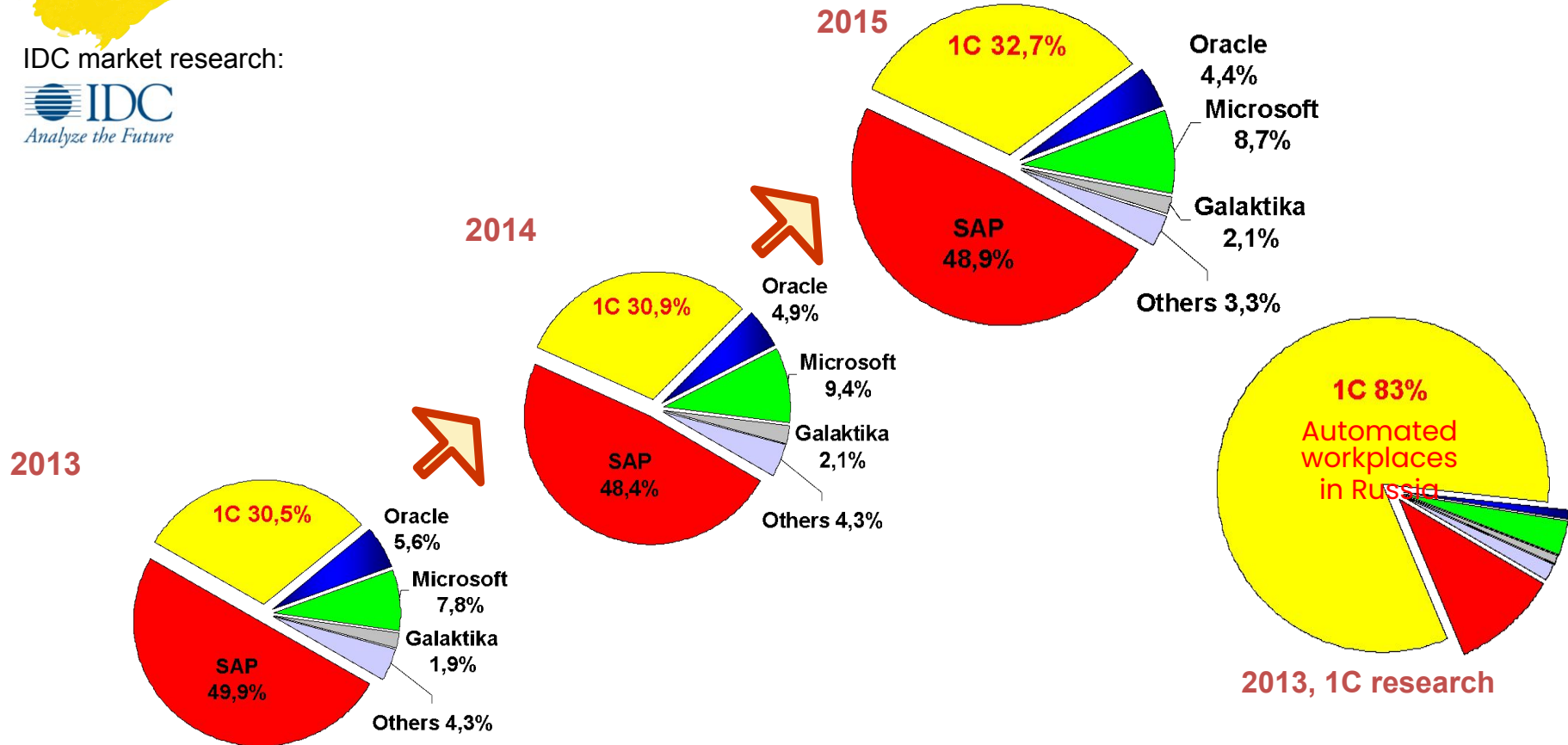
Enterprise Resource Management





1C:Enterprise 8 platform on the enterprise management systems market

IDC market research:



International Data Corporation (IDC) is the premier global provider of market intelligence, advisory services, and events for the information technology, telecommunications and consumer technology markets.



1C:ERP 2 (Enterprise Resource Management)

- **1C:ERP 2 (Enterprise Resource Management)** is an innovative solution that helps to build integrated information management systems at diversified enterprises, taking into account the best global and domestic practices of large and medium-sized business automations.
 - It is a result of the development of Manufacturing Enterprise Management* rev. 1.3, the most popular ERP-class system in Russia and the CIS countries.
 - It is based on the experience learned from the implementation and exploitation of this system within large-scale projects with hundreds and thousands of workplaces.
- *1C:Manufacturing Enterprise Management products have proved to be reliable and modern ERP solutions. Enterprises of the Russian Federation, Ukraine, Kazakhstan, Belarus, and other countries purchased over 20,000 distribution packages of 1C:Manufacturing Enterprise Management and some industry-specific solutions developed on its base. The total number employees of different sectors who use 1C:Manufacturing Enterprise Management is about 8 000 000 people. According to regular surveys, satisfaction level of customers who choose 1C:Manufacturing Enterprise Management is evaluated as “good” and “excellent” in 90% of cases.



Key benefits of 1C:ERP 2 (Enterprise Resource Management), the new flagship 1C solution

- **Rich functionality** that is equal to the level of international ERP systems.
- **Flexible, efficient, and modern** [1C:Enterprise 8.3 platform](#) that supports work via the Internet, including cloud technologies and mobile devices.
- **A large number of specialized solutions** that extend the system capabilities and use a single platform ([PDM](#) that extend the system capabilities and use a single platform (PDM, [EAM](#) that extend the system capabilities and use a single platform (PDM, EAM, [PMO](#) that extend the system capabilities and use a single platform (PDM, EAM, PMO, [ITIL](#) that extend the system capabilities and use a single platform (PDM, EAM, PMO, ITIL, [CRM](#) that extend the system capabilities and use a single platform (PDM, EAM, PMO, ITIL, CRM, [MDM](#) that extend the system capabilities and use a single platform (PDM, EAM, PMO, ITIL, CRM, MDM, [WMS](#) that extend the system capabilities and use a single platform (PDM, EAM, PMO, ITIL, CRM, MDM, WMS, [TMS](#) that extend the system capabilities and use a single platform (PDM, EAM, PMO, ITIL,



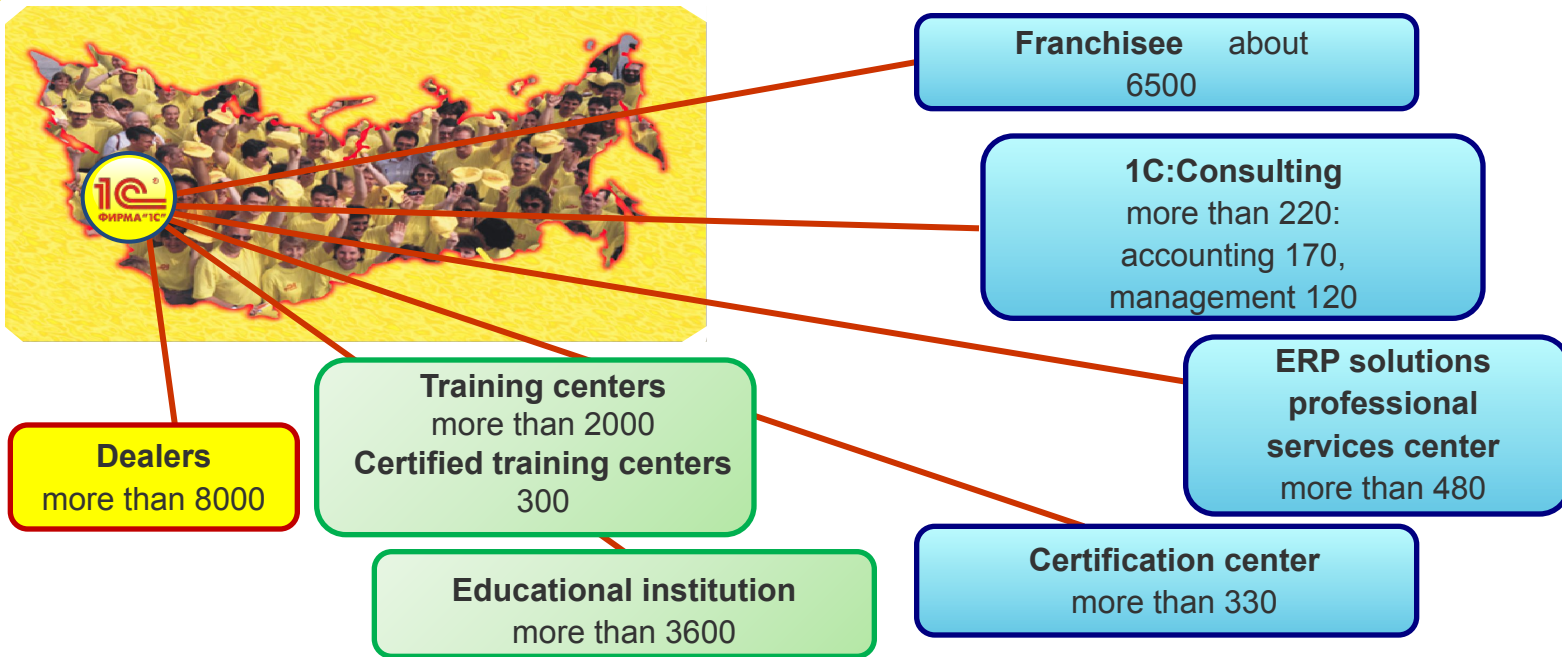


1C:ERP 2 (Enterprise Resource Management) and 1C:Document Management features

| | | | |
|--|---|---|---|
| MONITORING ENTERPRISE ACTIVITIES  | PRODUCTION MES  | COST CALCULATION  | DOCUMENT MANAGEMENT  |
| FINANCIAL MANAGEMENT  | BUDGETING AND FINANCIAL PLANNING  | IFRS ACCOUNTING AND REGULATORY ACCOUNTING  | SCHEDULE  |
| CUSTOMER AND VENDOR RELATIONSHIP MANAGEMENT  | SALES  | PROCUREMENT  | BUSINESS PROCESS MANAGEMENT  |
| HUMAN RESOURCES MANAGEMENT, INCLUDING WAGE CALCULATION  | WAREHOUSING  | FIXED ASSETS ACCOUNTING  | COLLABORATION  |
| 1C:ERP 2 | | | 1C:Document Management |



1C partner network



1C solutions are distributed over a net of franchisee companies in 600 cities of Russia and CIS.

The most important are 1C:Franchisees, a net of companies that provide complex services in automation of accounting and business activities.



Overview of 1C:ERP 2 functionalities



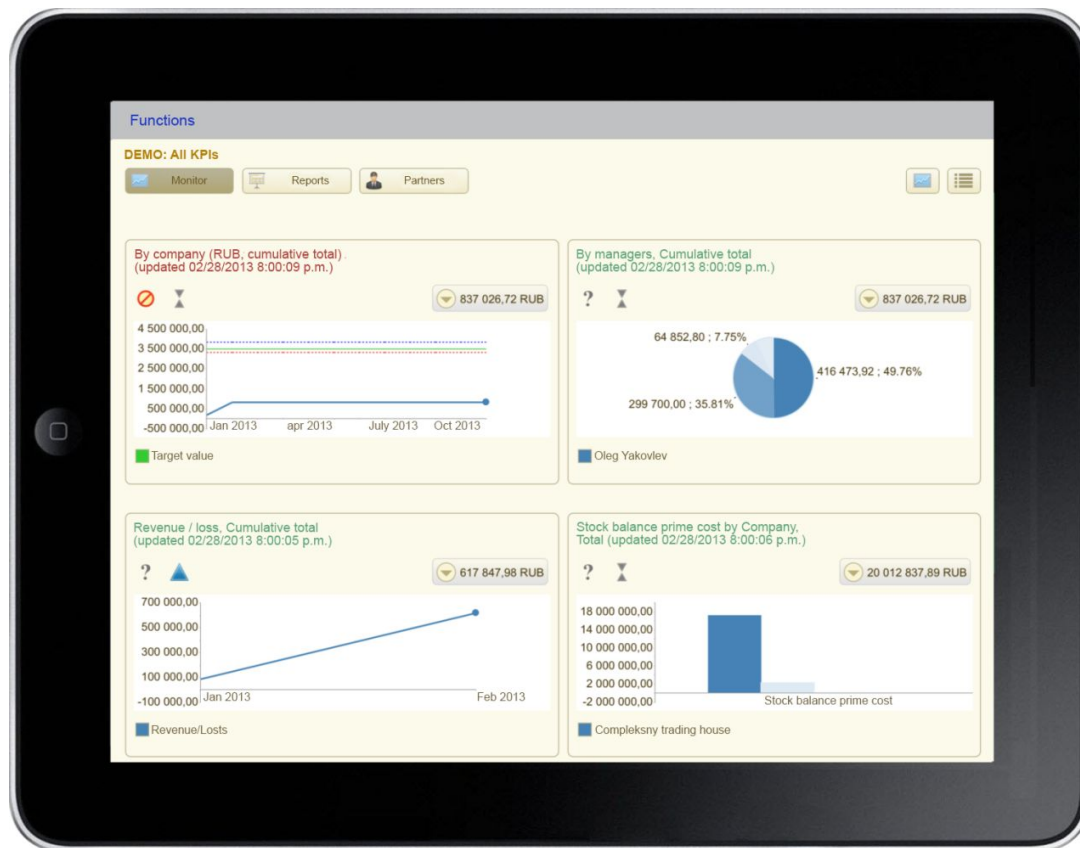
1C:ERP 2 (Enterprise Resource Management) KPI monitoring and analysis

- Hierarchical model goals and targets.
- Day-Week–Month control principle.
- Creating different options for comparing performance.
- Monitoring of targets with explanations of source data.
- Advanced analysis of financial results of the business areas.
- Short range of analytical reports.
- Newsletters on enterprise performance information via email.
- Access from mobile devices (tablet, smartphone).





1C:ERP 2 (Enterprise Resource Management) KPI monitoring and analysis





1C:ERP 2 (Enterprise Resource Management)

Production management and planning optimization

- Visualization of product structures.
- Description of production process (resources specifications).
- Detailed description of resources needed for production (route sheets).
- Parametrical description of needed materials.
- **Two level of production planning:** main and local production manager.
- **Interval planning** and Drum–Buffer–Rope.
- **Bottleneck detection and management.**
- MES/APS.





1C:ERP 2 (Enterprise Resource Management) Repair management

- Accounting for repair objects, registration of operating time
- Accounting for planning and unscheduled repairs
- Integration with the production subsystem
- Charts of equipment accessibility





1C:ERP 2 (Enterprise Resource Management) Cost calculation

- With 1C:ERP 2, users can organize the monitoring of material flows and resource usage, which provide the production, management, and commercial activities of the company.
- Production cost calculation is performed based on operational accounting.
- Accounting for the actual costs by business areas at the needed analytical view in volume and value terms.
- Operational quantitative resource accounting of work in progress.
- Accounting of the actual work in progress at the end of the reporting period at the needed analytics views.
- Multiple drivers to allocate cost to products, works, production costs, business areas, future periods.
- Actual costs calculation for the period.
- Information on the cost structure.
- The calculated costs may be detailed to the initial costs regardless of the number of production process stages.



1C:ERP 2 (Enterprise Resource Management) Financial management, IFRS, cash flow

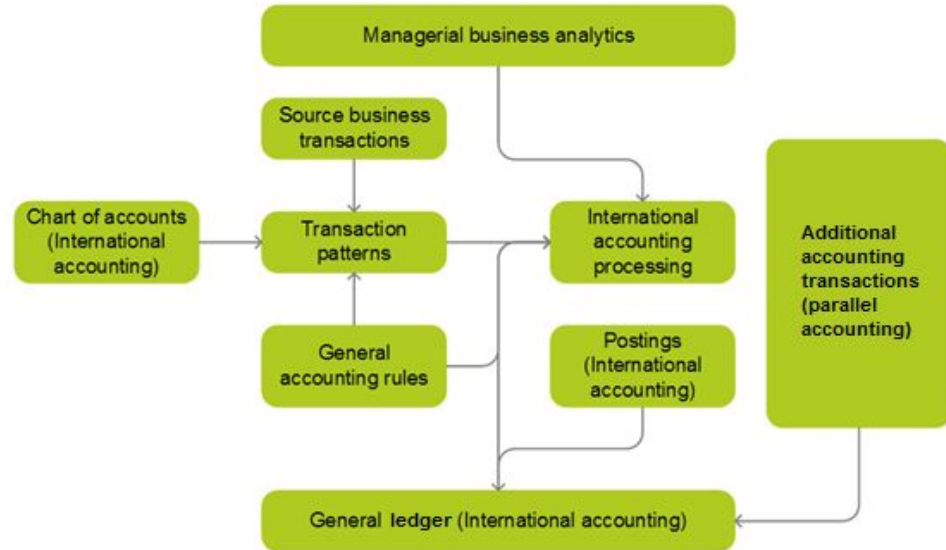
- Accounting in terms of business activities
- Stages of request approval
- Flexible rules of distribution
- Acquiring operations





1C:ERP 2 (Enterprise Resource Management) Financial management, IFRS, cash flow

- Use a combination of transformations of Russian accounting postings and parallel accounting to build a general ledger for corporate accounting.
- Set up additional corporate charts of accounts.
- Define corporate postings patterns for individual operations or groups of identical operations.

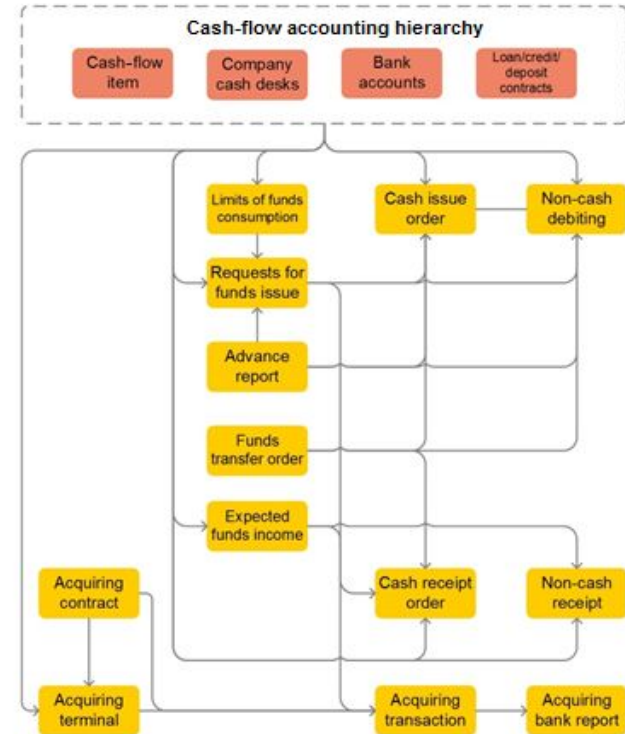




1C:ERP 2 (Enterprise Resource Management)

Financial management, IFRS, cash flow

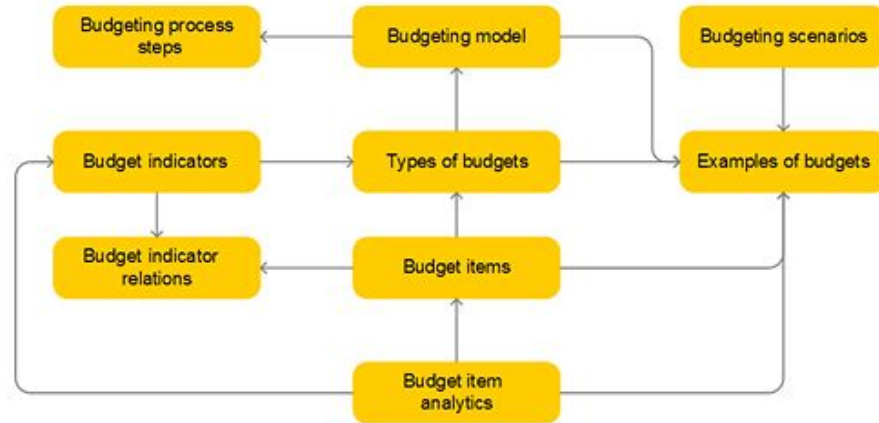
- Cash-flow planning.
- Control of cash transfers (cash desks and bank accounts).
- Control of payment terms under the contracts.





1C:ERP 2 (Enterprise Resource Management) Budgeting

- Plan and design diverse budget options.
- Collect and analyze data on actual budget implementation.
- Control limited budget highlights.
- Analyze and estimate pro forma and current financial performance of the company.





1C:ERP 2 (Enterprise Resource Management) Budgeting

- Configure basic budgeting model settings without the need for advanced programming, including setting KPIs and budget type, structure and workflow.
- Input planned data in the form of spreadsheets (similar to Microsoft Excel) and the upload of budget plans from Microsoft Excel.
- Use rolling planning, including the tracking of corrections and revisions to budgets.
- Automatic representation of actual business operations in progress reports, without duplicating business data.





1C:ERP 2 (Enterprise Resource Management) Regulatory accounting

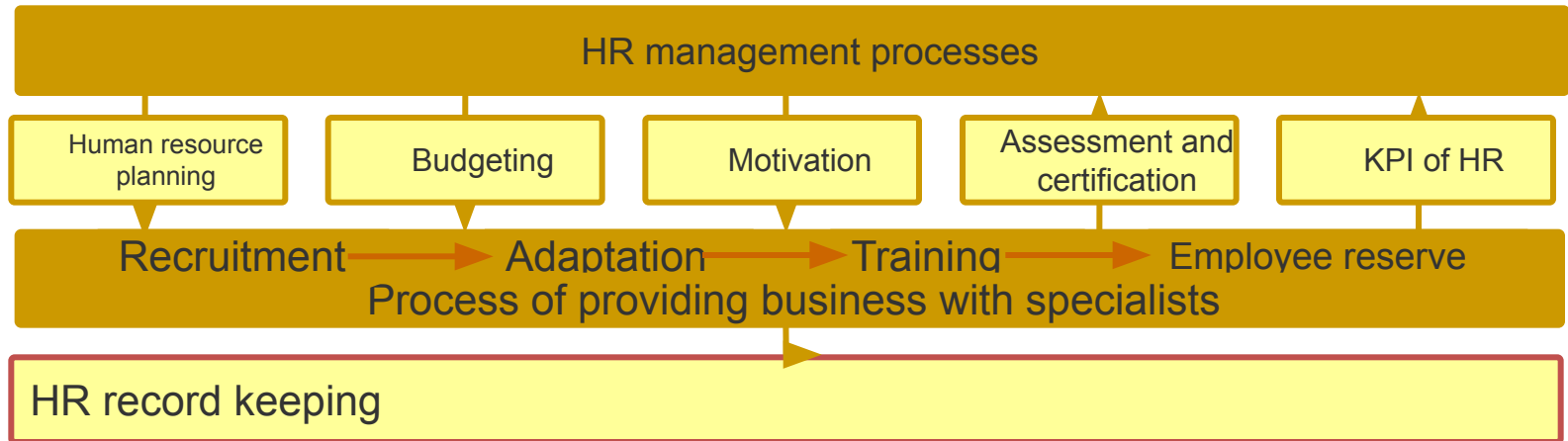
- Customization of the output of business transactions for groups of financial accounting, accounting of facts of economic activity with the delayed posting, monitoring the relevance of the output.
- Operational control over generation of postings for an optional document, calculations with separate subdivisions of the company (account 79).
- Automatic support of accounting for “complex” VAT without additional settings.
- Specification of declaration of income tax and regulatory accounting.





1C:ERP 2 (Enterprise Resource Management) HR and payroll management

- Work out HR management strategies
- Develop company organizational structure
- Analyze personnel information
- Estimate HR department efficiency
- Manage and maintain corporate culture





1C:ERP 2 (Enterprise Resource Management) HR and payroll management

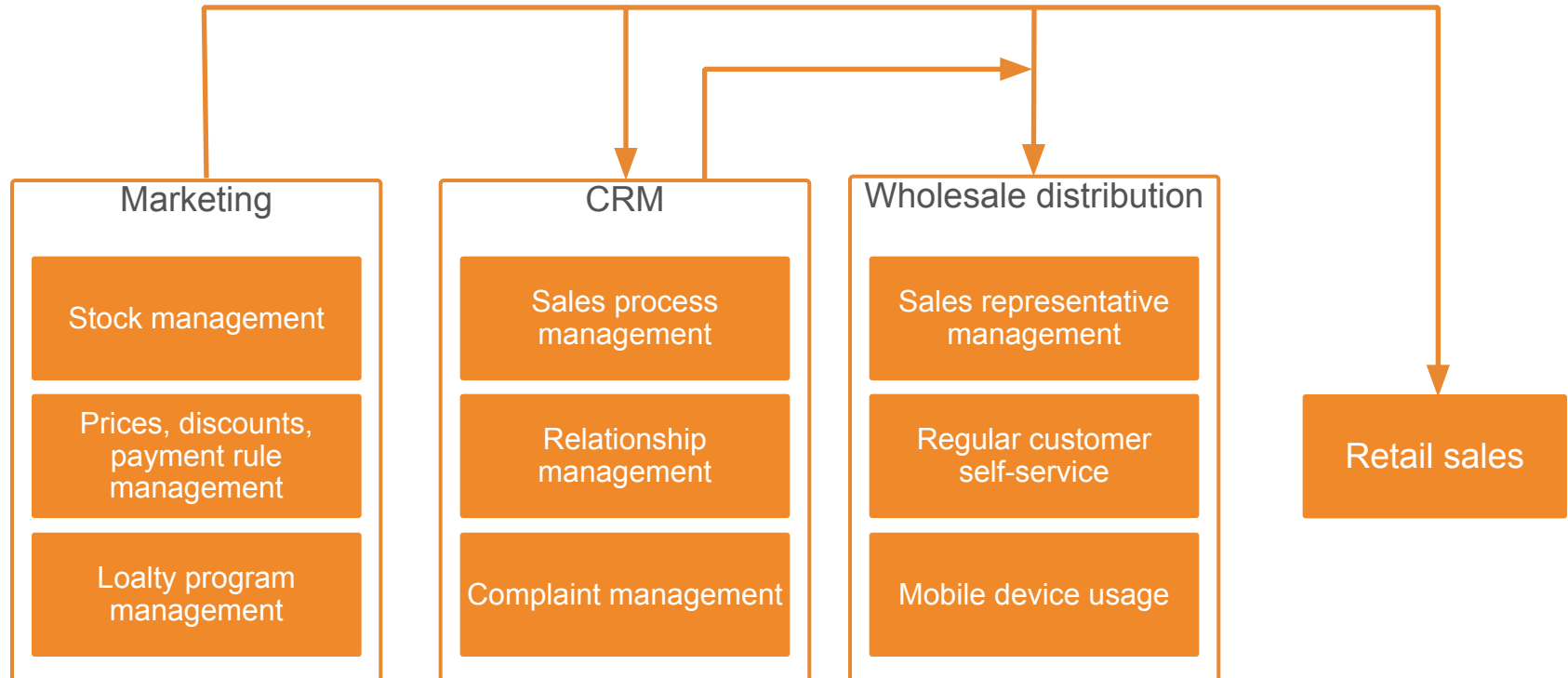
- Set goals for departments and employees and assess performance.
- Model payroll budget whenever the motivation system changes.
- Compare payroll budget if various motivation systems are used.
- Grading involves indication of personnel levels, setting rules of rewards, social benefits, and compensations by grades.
- Support individual benefits packages.





1C:ERP 2 (Enterprise Resource Management)

Sales management, marketing, and CRM

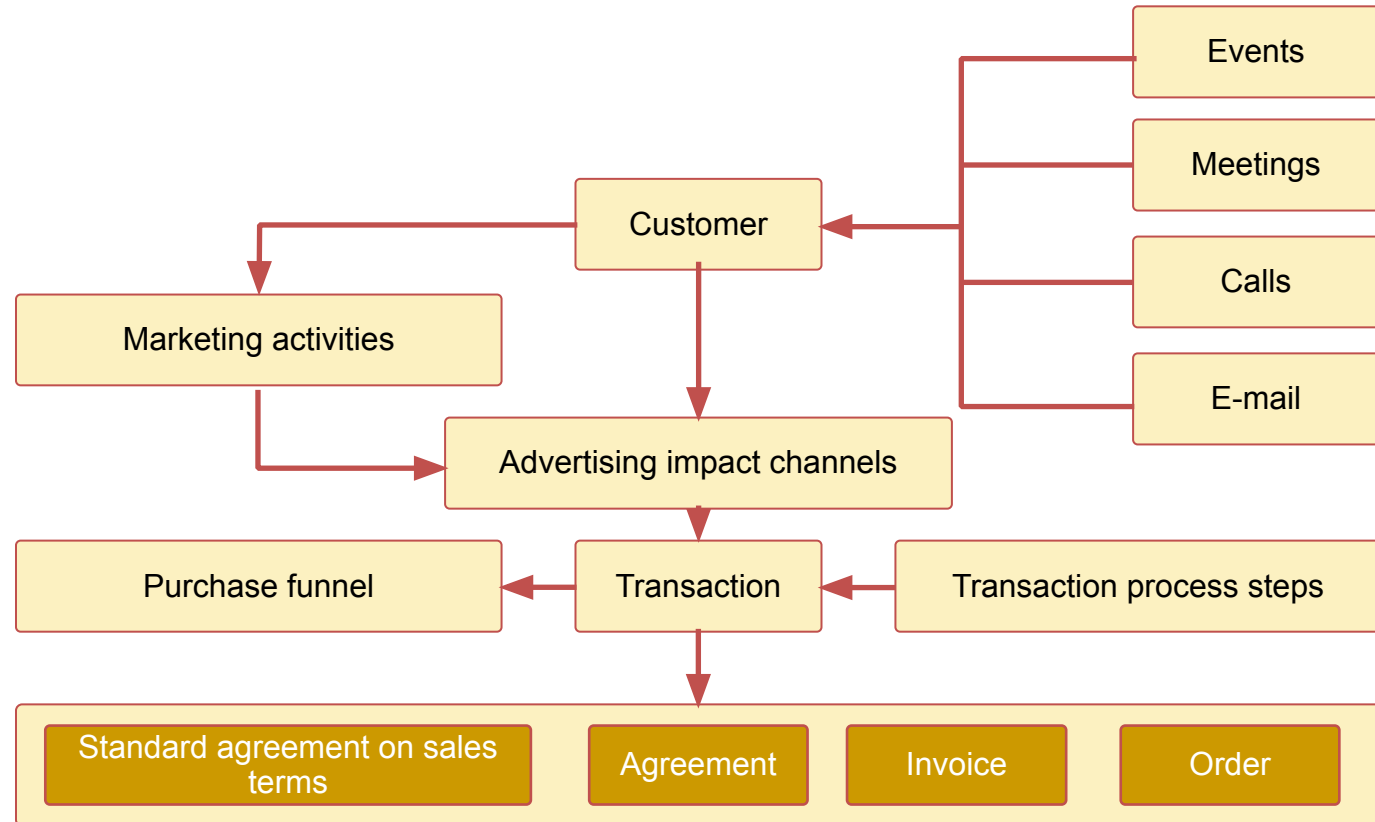




1C:ERP 2 (Enterprise Resource Management)

Sales management, marketing, and CRM

- All requests are to be registered and processed.
- Customers Segmentation using the integrated ABC (XYZ).
- Various pricing and discount schemes.
- Compare enterprise release prices with prices of suppliers and competitors.
- Use cumulative discounts by discount cards.
- Control how employees follow the fixed pricing policy.
- Organize commission and retail trade.





1C:ERP 2 (Enterprise Resource Management) Procurement management

- Use simple or complex schemes for procurement workflow.
- Arrange the approval process and track the history of each purchase order.
- Automatic upload and storage of pricing and other information related to suppliers for further usage and statistics.
- Combine the naming of articles according to suppliers' and internal price lists.
- Detailed partner balance accounting (supplier accounts payable), including outgoing payments approval and tracking.
- Support for a range of purchase schemes, including purchase, tolling, commercial concession and more.





1C:ERP 2 (Enterprise Resource Management) Inventory management and delivery

The main purposes of the inventory management and delivery module are:

- Automated planning and control of different warehouse operations
- Optimising material flows inside warehouses and zones.
- Tracking deliveries to customers





1C:ERP 2 (Enterprise Resource Management) Inventory management and delivery

- Full integration between sales and warehouse, using orders, statuses and online reports
- Special user workspaces (user interface screens) for fast-tracking the most intensive stock operations
- Flexibility between simple or complex stock operations control models
- The ability to use warehouse zone planning and trace stock movements with a range of barcode equipment
- The ability to print whatever accounting documents are required by Russian legislation



Thank you for your attention



1C Company, 05.2017

int@1c.com