

BAM!

around

WITH

from

OUTSIDE

after

DOWN

on

away from

BENEATH

ALONG

BETWEEN

of

up

beyond

until

TO

GAME RULES

BAAM! The GAME SHOW

1. **Make teams. Decide which team goes first.**
2. **Appoint a scorekeeper.**
3. **Teams answer correctly and earn money. If a team is correct,
they can continue until max. 3 times or until they get BAAM!**
4. **If a team hits BAAM! they go bankrupt!**
5. **The team with the most money at the end is the winner.**
6. **Penalties cost a team \$10 , \$25 and \$50 dollars!**

X	X	X	X	X
X	X	X	X	X
X	X	X	X	X
X	X	X	X	X
X	X	X	X	X



The owl is on the book.

\$100





The frog is on the box.

\$ 100





**The dog is under the
table.**

\$ 100







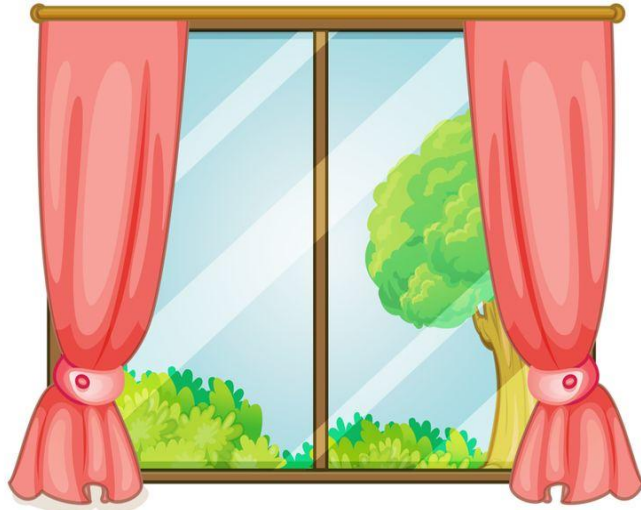
**The clock is
below the
window**

\$ 150





**The clock
is above
the
window.**

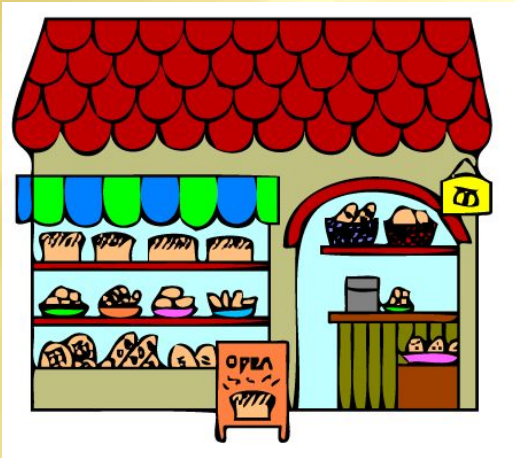


\$150





The shop is opposite the bank



\$ 200



The children are on the hill.



\$ 500

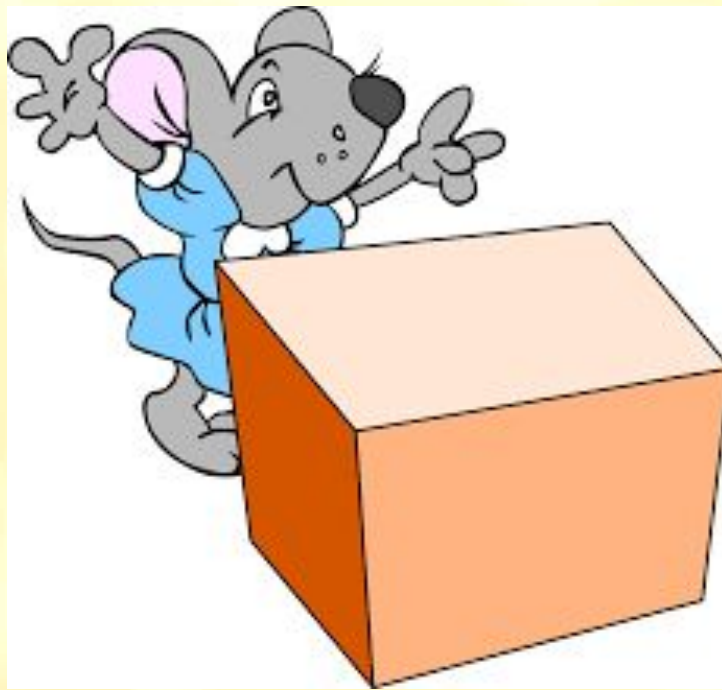


**The cat is between the
dog and the rabbit**



\$ 250





**The mouse is behind
the box**

\$ 100



**The mouse is in front
of the box.**

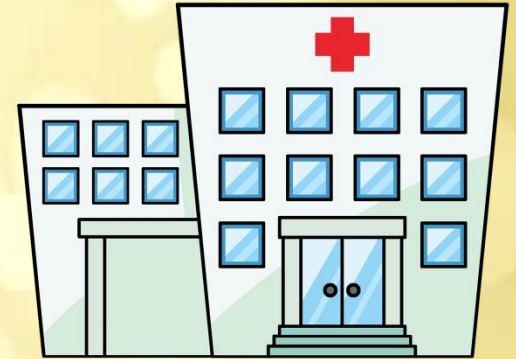


\$ 100





**The sports center is
between the tower and
hospital**



\$ 250



The café is next to the bus station



\$ 100



The children are in the library



\$ 50



**The supermarket is near
the bank.**



50m

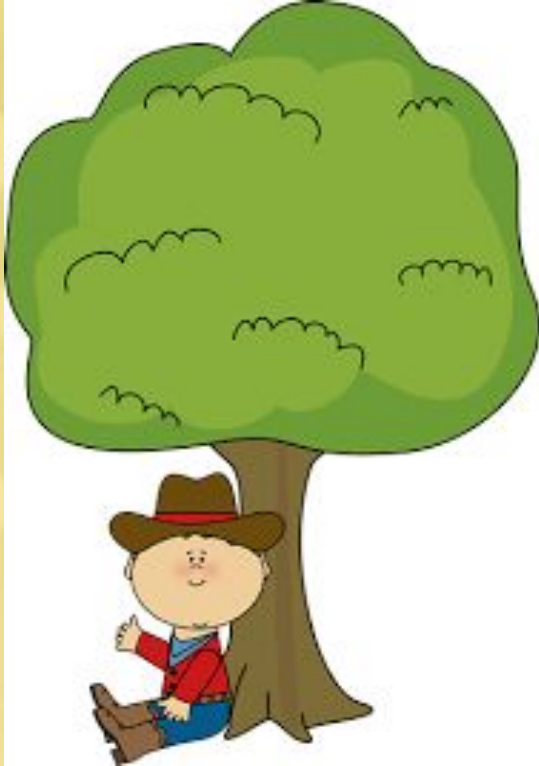


\$ 1000





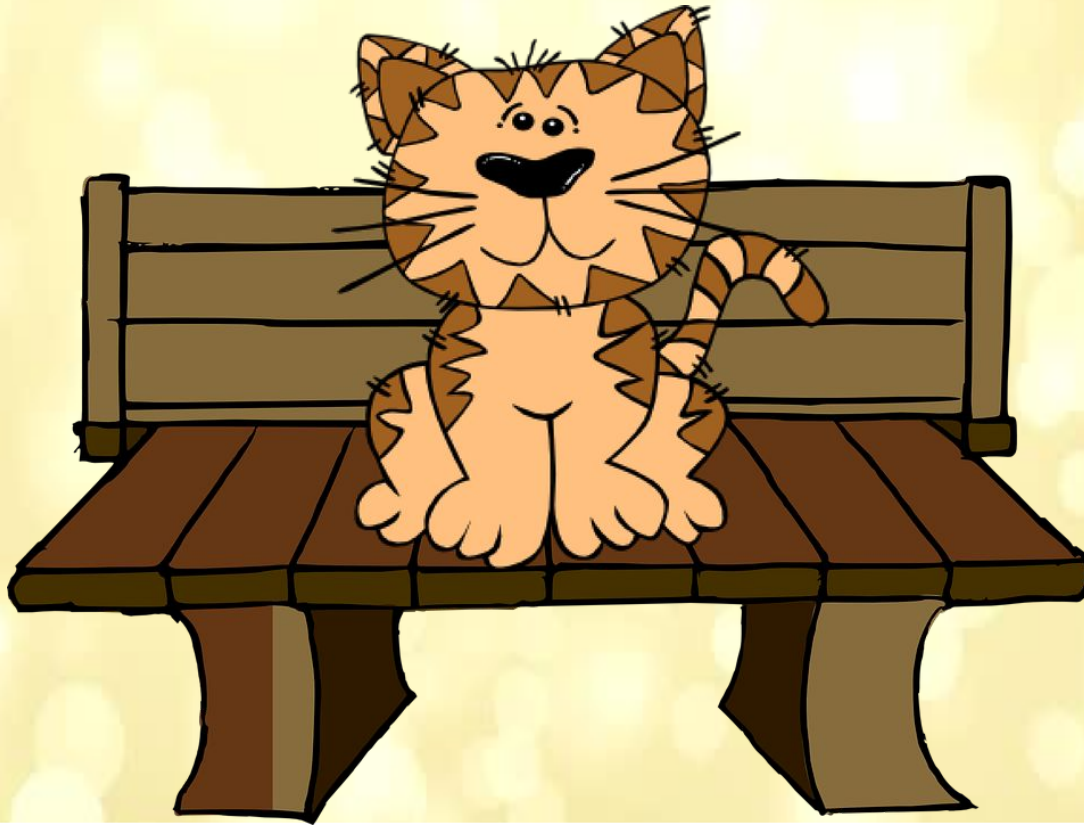
**The boy is under the
tree.**



\$ 200



The cat is on the bench



\$ 150



**The school is opposite
the park.**



\$ 50





**The
picture is
above
the sofa**



\$ 500





**The café is
above the
supermark
et**

\$ 200





**The
supermarke
t is below
the cafe**

\$ 50





The school bus is in front of the Museum



\$ 150





**The girl
is behind
the
books**

\$ 100





Sports centre is near the bus station



100 m

\$ 100

