

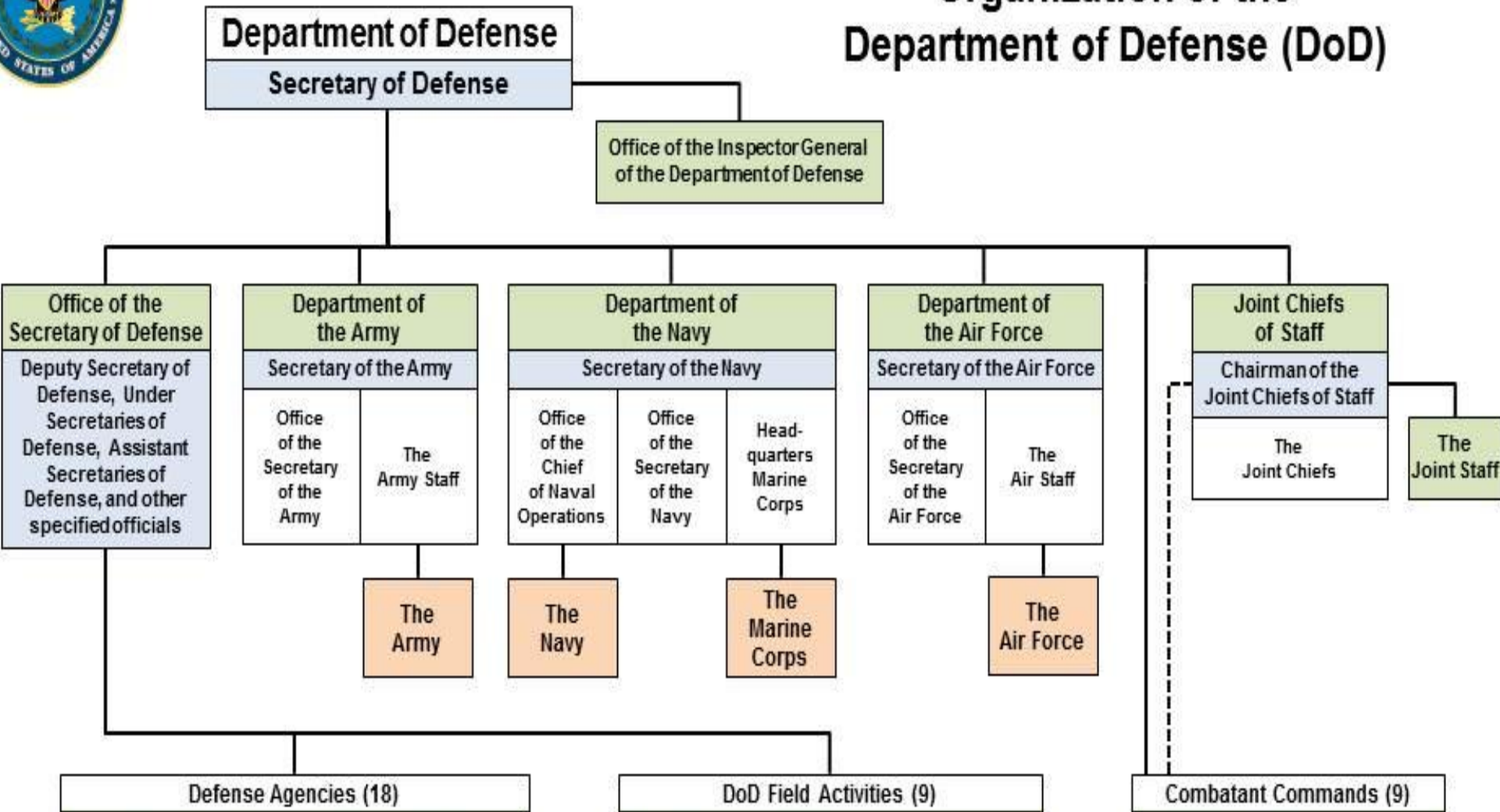
United States Navy **STRUCTURE**



LOOK AT THE CHART AND TRY TO GUESS WHAT IT IS ABOUT



Organization of the Department of Defense (DoD)



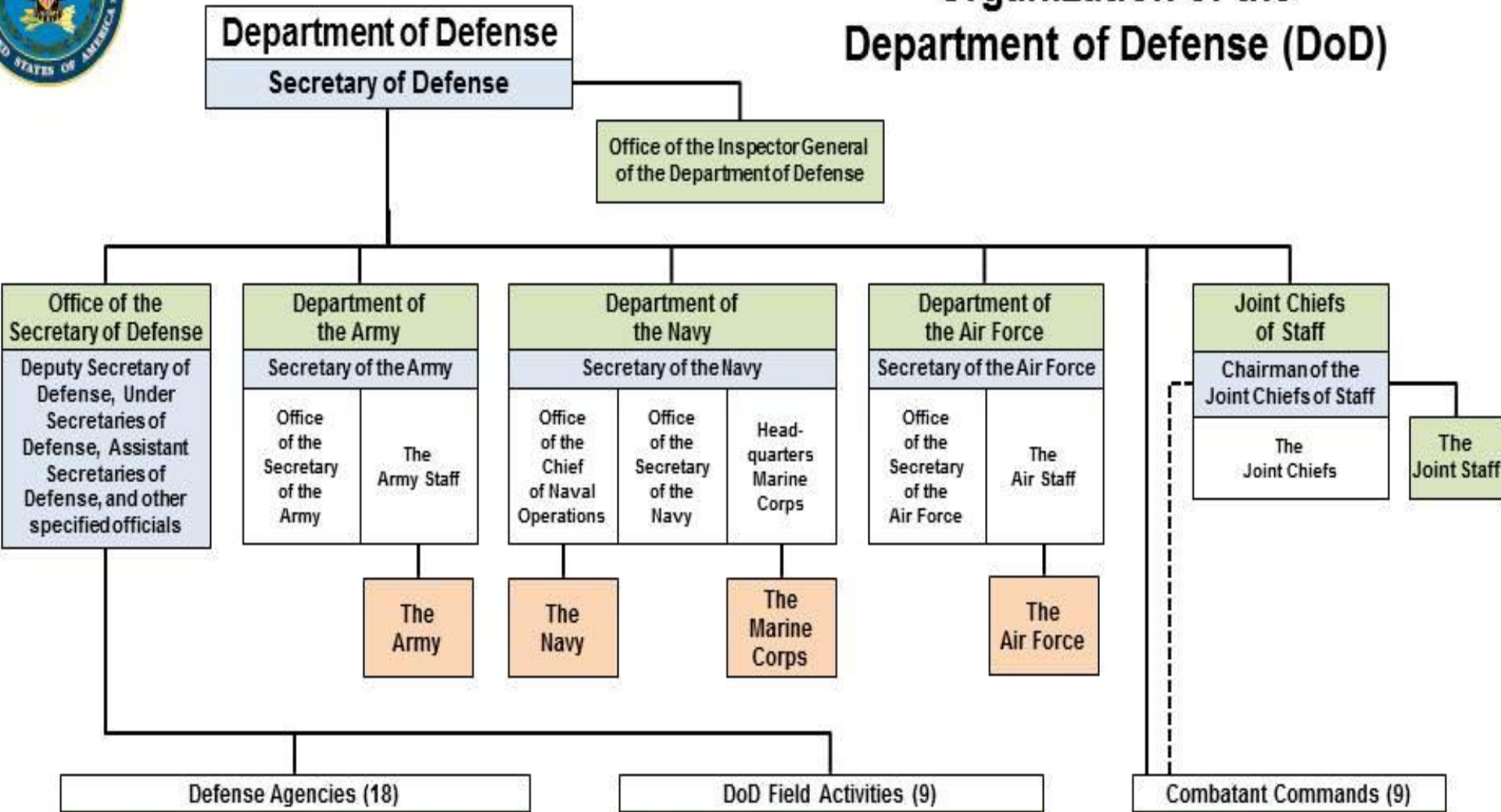
DO YOU KNOW ALL THE WORDS? IF NOT THEN SEE THE NEXT SLIDE

Secretary of Defense (SECDEF)	министр обороны
Department of Defense (DOD)	министерство обороны
Department of the Army (DA)	министерство сухопутных войск
Department of the Navy (DN)	министерство ВМС
Department of the Air Force (DAF)	министерство ВВС
Chief of Naval Operations (CNO)	начальник штаба ВМС, Главком ВМС
Chief of Staff	начальник штаба
Secretary of the Navy (SN; SECNAV)	министр ВМС
Joint Chiefs of Staff (JCS)	комитет начальников штабов
Joint Staff (JS)	объединенный штаб
Commandant of the Marine Corps	командующий корпусом морской пехоты

LOOK AT THE CHART AND TELL ABOUT THE DOD STRUCTURE



Organization of the Department of Defense (DoD)



Include, Incorporate, Comprise, consist of
is headed by , is under control of , is commanded by, Is responsible to, Is responsible for

PRONOUNCE AND WRITE DOWN THE NEW WORDS

the Operating Forces (OF)	боевые силы ВМС США
the Shore Establishment	береговые части и учреждения
the Coastal Guard (USCG)	береговая охрана
the Navy Department (ND)	Главное управление ВМС США
sea-going forces	корабельный состав флота
sea frontier forces	силы военно-морского округа
utilization	использование, применение
entire	весь
assign	определять, устанавливать
Military Sealift Command	командование морских перевозок
executive authority	орган исполнительной власти
flexible	гибкий

Translate the following words and word combinations from English into Russian:

Department of the Navy; sea frontier forces; the Operating Forces of the Navy; under the con or supervision; the Secretary of the Navy; the Navy Department; be assigned to; the US Marine Corps; executive authority; the US Coast Guard; comprise the several fleets; seagoing forces; squadron; division; civilian secretary

Match word combinations and abbreviations

Secretary of Defense

Department of Defense

Operating Forces

Department of the Navy

USA Navy

Chief of Naval Operations

Secretary of the Navy

US Marine Corps

US Coast Guard

• DOD

• OF

• USN

• SECNAV

• CNO

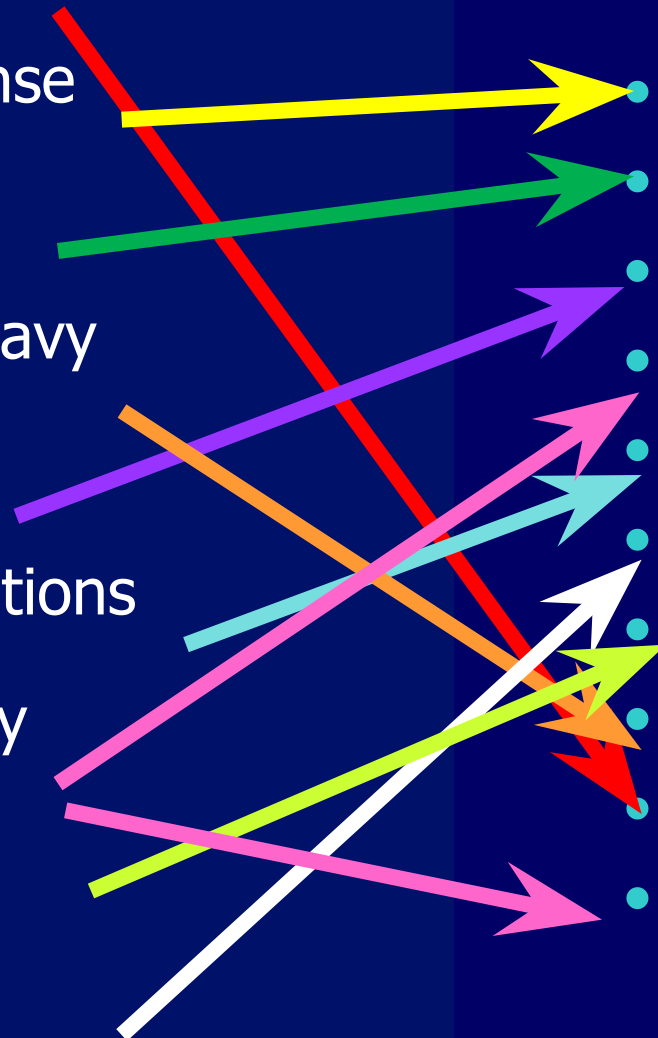
• USCG

• USMC

• DN

• SECDEF

• SN



Read and translate

The US Armed Forces are organized to serve within and under control of the DOD.

The National Security Act of 1947 established the position of the Secretary of Defense and his responsibility over the three departments — department of the Army, Navy, and Air Force, each headed by a civilian secretary. Actual command of the Armed Service in each department is carried out by the Chief of Staff, US Army; Chief of Naval Operations; and Chief of Staff, US Air Force.

- The CNO is the senior military officer in the Navy. The CNO is a four-star admiral and is responsible to the Secretary of the Navy for the command, utilization of resources and operating efficiency of the OF of the Navy and of the Navy shore activities assigned by the Secretary.
- The term "Department of the Navy" means the Navy Department, the United States Marine Corps; the entire Operating Forces of the US Navy; including naval aviation, and the reserve components of such forces; all HQ, forces, bases and installations, under the control or supervision of the Secretary of the Navy and the US Coast

Read the following text and translate it into Russian: **The Organization of the US Navy**

The DN consists of the principal parts as follows:

The OF of the Navy, which comprise the several fleets, seagoing forces, sea frontier forces, the Military Sea Transportation Service and such shore activities of the Navy and other forces as may be assigned to the OF of the Navy by the President or the SECNAV.

The Navy Department, which is the central executive authority of the DN. It comprises the Office of the SECNAV, the Naval Staff headed by the Chief of Naval Operations and the HQ of the USMC.

The Shore Establishment comprises all activities of the DN not assigned to the OF of the Navy and not part of the ND. These activities include air stations, training stations, and other shore activities of the US Navy and the USMC.

The ships that provide transportation for all Military Services are operated under the con of the OF as the Military Sealift Command.

Find mistakes

- The National Security Act established the position of the Secretary of Defense and his responsibility over the four departments, each headed by a civilian secretary.
- The CNO is the senior mil off in the Navy.
- Actual command of the Armed Service in each department is carried out by the Chief of Staff
- The term "Department of the Navy" means the Navy Department, the USMC the entire Operating Forces of the US Navy; including naval avn, and the res components of such forces; all HQ, forces, bases and installations, and the US Coast Guard operating as part of the Navy in wartime

Find the ending

1. The Department of Defence consists of
 2. Each department is
 3. Actual command in Department of the Navy is
 4. The CNO is
 5. The CNO is
 6. The DN consists of
- a) headed by a civilian secretary.
 - b) responsible to the Secy of the Navy for the comd, utilization of resources and operating efficiency of the OF of the Navy and of the Navy shore activities.
 - c) the three departments
 - d) the OF of the Navy, the Navy Department, the Shore Establishment.
 - e) the senior mil off in the Navy.
 - f) carried out by the Chief of Naval Operations.

Finish the sentence

- The Department of Defence consists of
- Each department is
- Actual command in Department of the Navy is
The CNO is
- The CNO is
- The DN consists of

Replace the abbreviations by words

Fill in the chart

SECDEF

CNO

secy

mil

off

DN

OF

SECNAV

resp

ND

USMC

res

con

USCG

SN

	POSITION	Establishments	Unclassified	
dept				tgt
comdr				EM
con				spt
msn				atk
svc				

Replace the words by abbreviations where possible

- The **SECDEF** is responsible for the three departments, each headed by a civil **secy** ary.
- The **CNO** is the senior **mil** **off** in the Navy. The **CNO** is a four-star admiral and is responsible to the **SECNAV** for the command, utilization of resources and operating efficiency of the Operating Forces of the Navy and of the Navy **DN** ed by the **ND**.
- The **USMC** "the Navy" me **OF** artment, the United States Marine Corps; the en **res** rating Forces of the US Navy; including naval aviation, and the reserve **con** components of **SN** ces, base **USCG** installations, under the control or supervision of the Secretary of

Fleet Marine Forces	флотские силы морской пехоты
Type Commander	командующий однородным соединением [однородными силами] флота
Task Organization	оперативная организация
task force	оперативная группа, оперативное соединение
task force organization	организация оперативного соединения
Type Organization	повседневная организация однородных сил флота
primary	начальный
intermediate	Средний, промежуточный
advanced	Сложный, передовой,

The Operating Forces

The OF of the Navy comprise the several fleets, seagoing forces, sea frontier forces, district forces, Fleet Marine Forces and other assigned Marine Corps forces, the Military Sea Transportation Service, and such shore activities of the Navy and other forces and activities as may be assigned to the OF of the Navy.

Ships of the OF are organized under three different organizational systems.

First, the majority of forces are assigned to Type Commanders for administrative control and for operational control during primary and intermediate training.

Second, these same forces are assigned to Fleet Commanders for advanced training and operations.

Third, some elements of these forces are further assigned to task force organizations for specific operations and missions.

**Chief of
Naval
Operations**

**Naval Reserve
Forces**

**Operational
Test &
Evaluation
Forces**

**Naval
Special
Warfare
Command**

**Military
Sealift
Command**

**U.S. Naval
Forces
Europe**

**U.S. Naval
Forces
Central
Command**

**Atlantic
Fleet**
includes Fleet
Marine Forces

**Pacific
Fleet**
includes Fleet
Marine Forces

**6th
Fleet**

**5th
Fleet**

**2nd
Fleet**

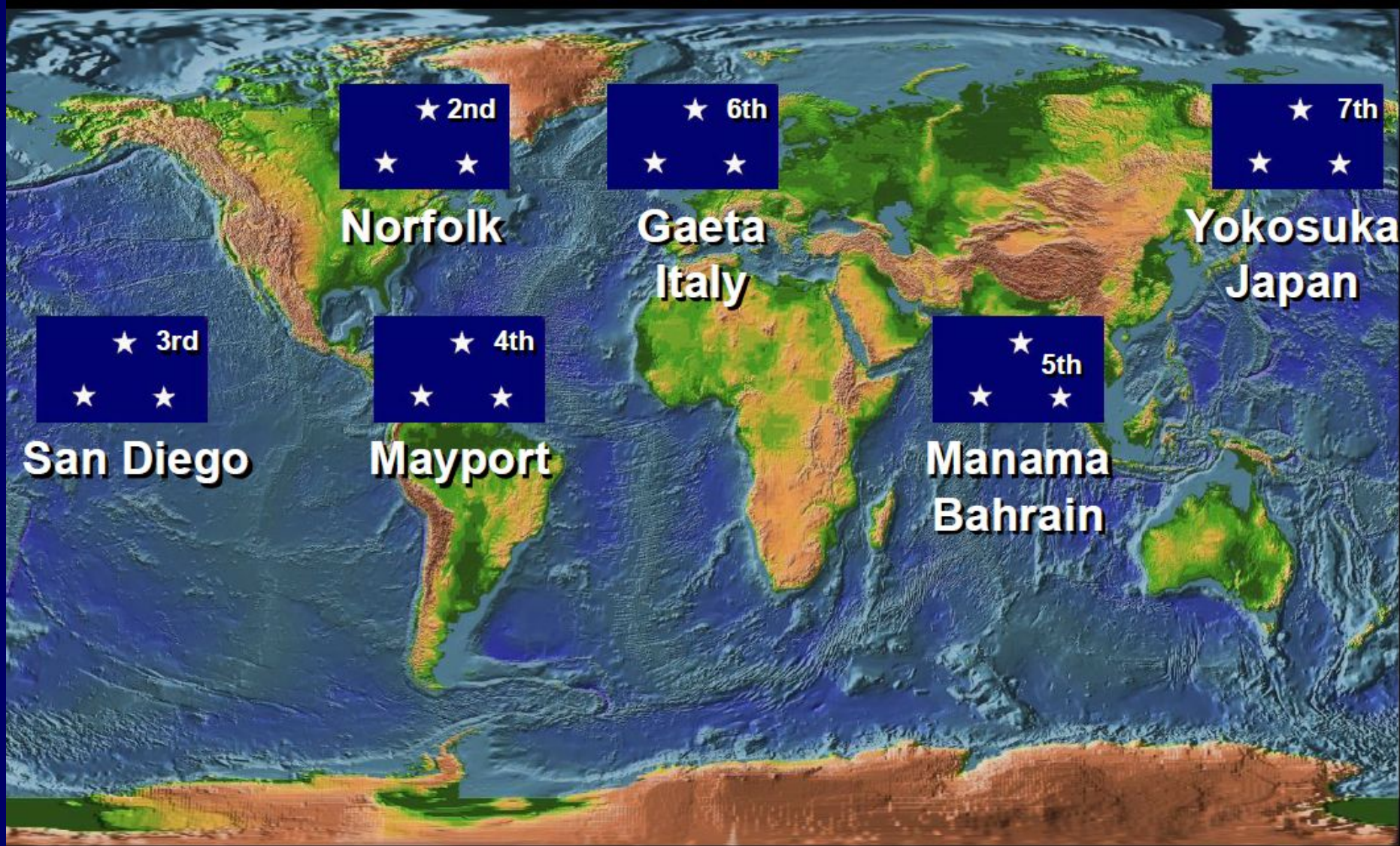
**3rd
Fleet**

**7th
Fleet**

**Type
Commands**

**Type
Commands**

Operating Forces



U. S. Navy Fleets



- Based in Gaeta, Italy, the U.S. 6th Fleet's primary operating area is the Mediterranean Sea as the operating force for US Naval Forces Europe headquartered in London, England.





- U.S. Naval Forces Central Command (CENTCOM) operates the 5th Fleet located in Manama, Bahrain.
- The Commander, U.S. Atlantic Fleet (COMLANTFLT), is located in Norfolk, Virginia. The U.S. Second Fleet is responsible for this area.



- The Commander, U.S. Pacific Fleet (COMPACTFLT), is located at Pearl Harbor, Hawaii.



- The 3rd Fleet is located at San Diego, California, responsible for the eastern Pacific Ocean



- Located in Yokosuka, Japan, the 7th Fleet is responsible for the western Pacific



Why are some fleet numbers missing?

- Some fleet numbers are missing: a result of renumbering following World War II

Type Organization

All ships are organized into broad categories under commanders whose titles are self-explanatory, such as Amphibious, Destroyer, Mine, Submarine, Air, etc.

Each type command contains further administrative sub-divisions such as flotillas, squadrons, and divisions or air wings, air groups, and squadrons.

Normal administration is carried on by this organization, and a ship or unit is always under the administrative control of the appropriate type commander, even though under the operational control of a fleet or task force commander.

CARRIER STRIKE GROUP

U.S. NAVY

What are the carrier strike groups employed for?

What is their formation?

Do you remember missions of these ships?

If not let's refresh your knowledge.

THE CARRIER STRIKE GROUP PROVIDES THE COMBATANT COMMANDER WITH A RESPONSIVE, FLEXIBLE COMBAT FORCE FOR SUSTAINED MARITIME POWER PROJECTION AND COMBAT SURVIVABILITY TO SHAPE THE OPERATIONAL ENVIRONMENT, RESPOND TO CRISES, AND PROTECT THE UNITED STATES AND ALLIES' INTERESTS IN ANY THREAT ENVIRONMENT.

7,500

SAILORS & MARINES

75

AIRCRAFT ON AVERAGE



5

E-2D HAWKEYES



5

EA-18G GROWLERS



44

STRIKE FIGHTERS



19

HELICOPTERS



2

C-2A GREYHOUNDS

4-6

DESTROYERS



1

CRUISER



1

NUCLEAR-POWERED AIRCRAFT CARRIER



10

U.S. NAVY
CARRIER
STRIKE
GROUPS



NUCLEAR-POWERED AIRCRAFT CARRIERS (CVN)

FOR THE CARRIER STRIKE GROUP, ENSURE AIR
PROVIDE THE STRIKE GROUP WITH INTELLIGENCE
HUMANITARIAN AID OPERATIONS.
6 STRIKE FIGHTERS, AIRBORNE EARLY WARNING
FT TO ENSURE AIR SUPERIORITY, MISSILES AND
S FOR SMALL BOAT DEFENSE, LONG-RANGE RADAR
ING AND ENEMY DETECTION.



CRUISERS (CG)

MISSION: CARRIER STRIKE GROUP AIR DEFENSE

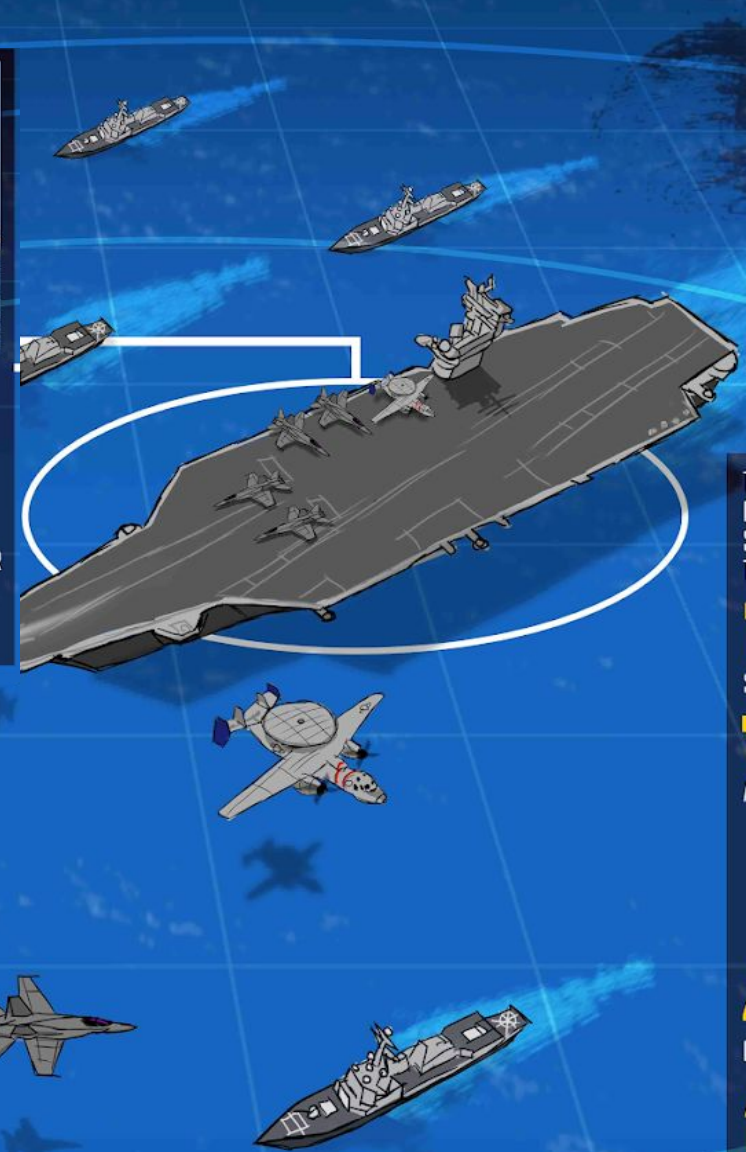


DESTROYERS (DDG)

MISSION: PROVIDE MULTI-MISSION OFFENSIVE AND
DEFENSIVE CAPABILITIES TO CARRIER STRIKE GROUPS.
COMBAT ROLES INCLUDE INTEGRATED AIR AND MISSILE
DEFENSE (IAMD), INCLUDING BALLISTIC MISSILE DEFENSE
(BMD), ANTI-SUBMARINE WARFARE (ASW), ANTI-SURFACE
WARFARE (ASUW) AND LONG-RANGE STRIKE WARFARE.

CAPABILITIES: ADVANCED RADAR AND SONAR DETECTION
SYSTEMS, NETWORK DATA LINK SYSTEMS AND HIGH-TECH
WEAPONS, INCLUDING STANDARD MISSILE, TOMAHAWK,
TORPEDOES, LARGE & MEDIUM CALIBER GUNS. OPERATES
MH-60R SEAHAWK HELICOPTERS FOR ASW, ASUW, SEARCH
AND RESCUE, CARGO LIFT AND SPECIAL OPERATIONS.

SPEED: 30+ KNOTS
CREW: 303



C
M
D
I
S
W
C
S
W
T
I
M
A
I
S
C

ABILITY

ANTI-SUBMARINE WARFARE

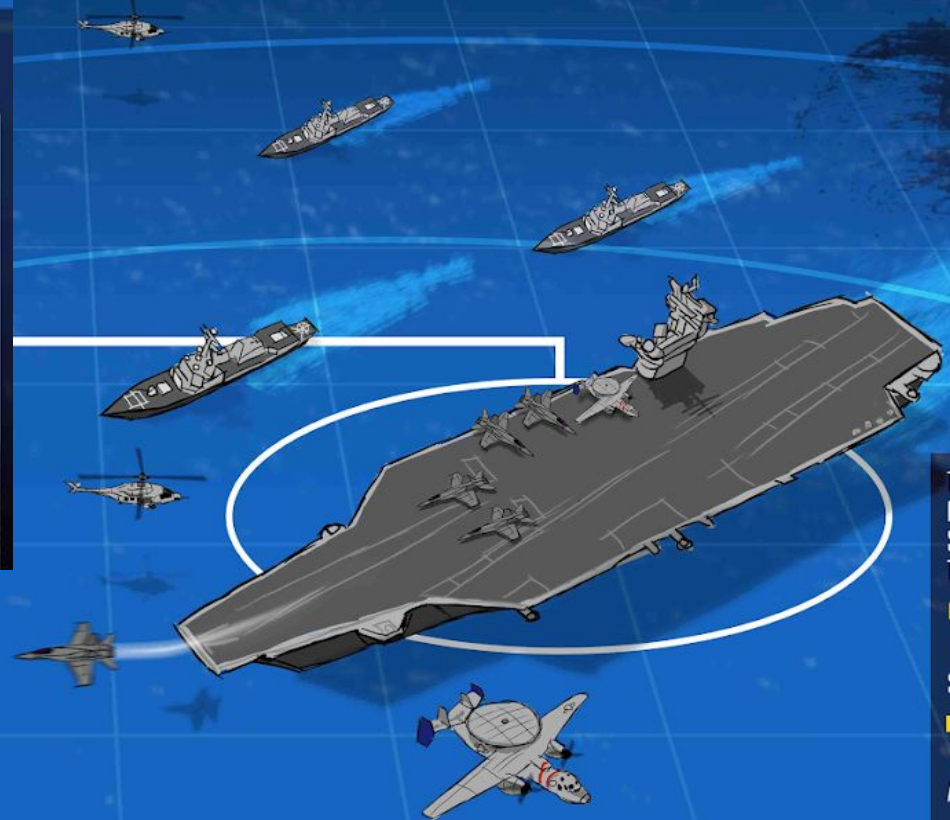
ANTI-SURFACE WARFARE

AI

AIR SUPERIORITY



ANTI-SUBMARINE WARFARE



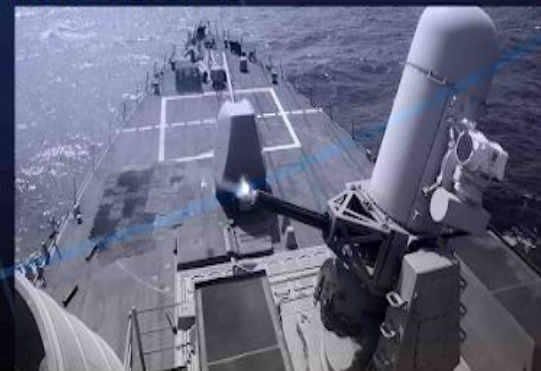
ANTI-SURFACE WARFARE



ANTI-AIR WARFARE



SHIP DEFENSE



INDEPENDENT WORK

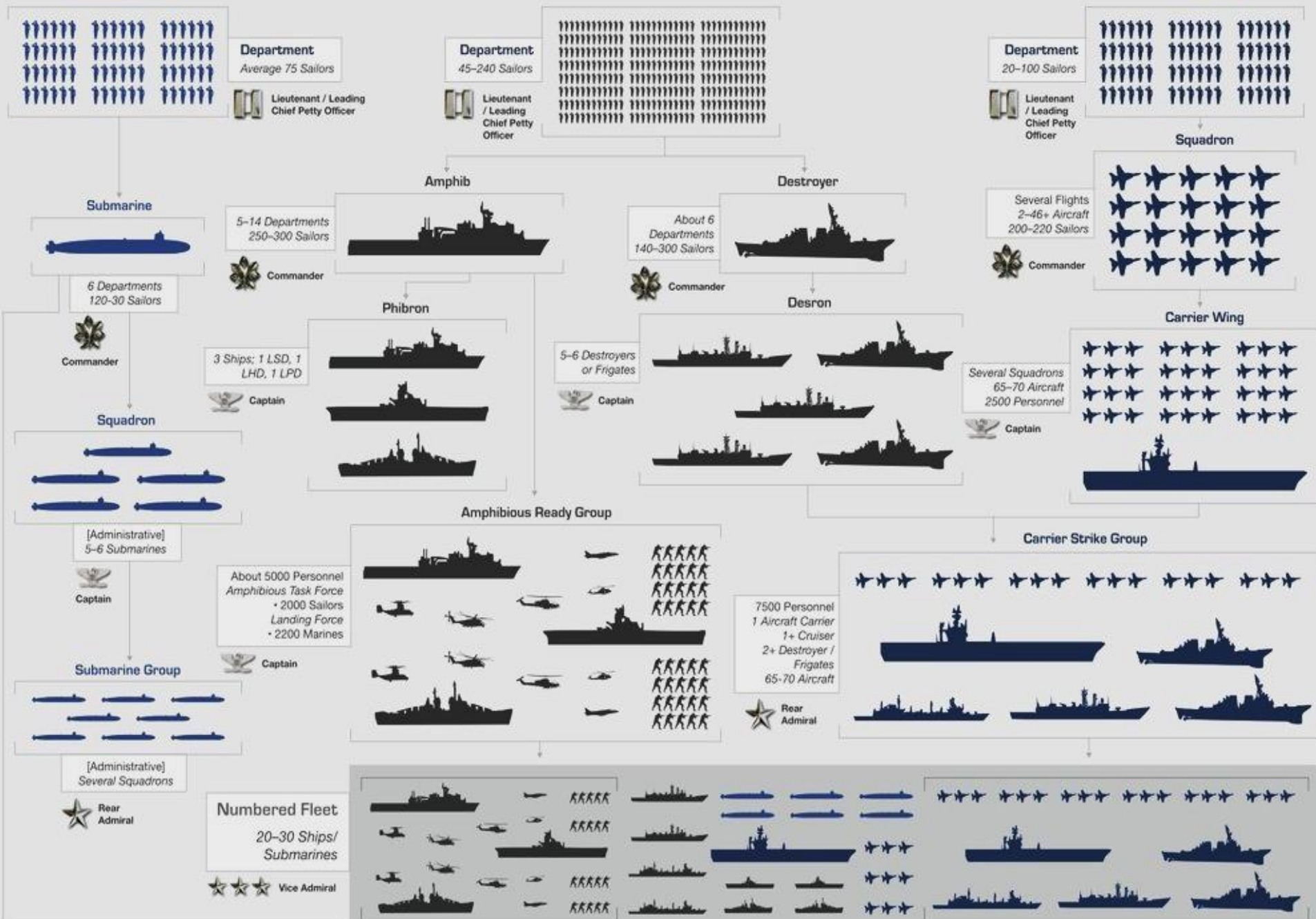
Speak on the topic



SUBMARINES

SURFACE

AVIATION



AIRCRAFT CARRIER

■ Multi-Purpose Aircraft Carrier (Nuclear-Propulsion)

Gerald R. Ford Class CVN

Gerald R. Ford	CVN-78
John F. Kennedy	CVN-79
Enterprise	CVN-80

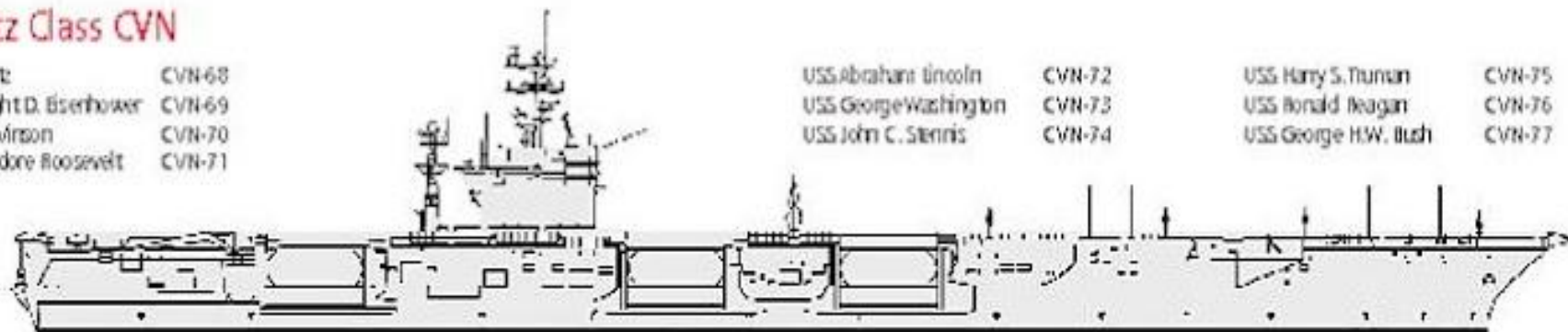


Nimitz Class CVN

USS Nimitz	CVN-68
USS Dwight D. Eisenhower	CVN-69
USS Carl Vinson	CVN-70
USS Theodore Roosevelt	CVN-71

USS Abraham Lincoln	CVN-72
USS George Washington	CVN-73
USS John C. Stennis	CVN-74

USS Harry S. Truman	CVN-75
USS Ronald Reagan	CVN-76
USS George H.W. Bush	CVN-77

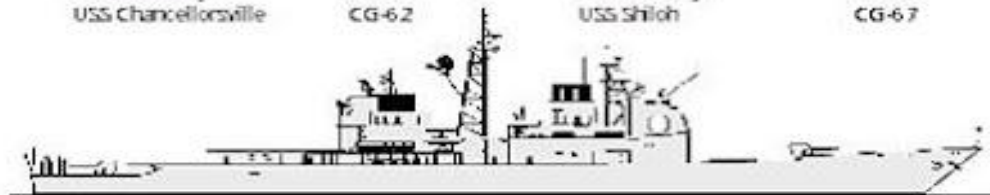


SURFACE COMBATANT

■ Guided Missile Cruiser

Ticonderoga Class CG

USS Bunker Hill	CG-52	USS Princeton	CG-59	USS Gettysburg	CG-64	USS Lake Erie	CG-70
USS Mobile Bay	CG-53	USS Normandy	CG-60	USS Chosin	CG-65	USS Cape St. George	CG-71
USS Anfield	CG-54	USS Monterey	CG-61	USS Hue City	CG-66	USS Vella Gulf	CG-72
USS Leyte Gulf	CG-55	USS Chancellorsville	CG-62	USS Shiloh	CG-67		
USS San Jacinto	CG-56						
USS Lake Champlain	CG-57						
USS Philippine Sea	CG-58						



■ Guided Missile Destroyer

Zumwalt Class DDG

Zumwalt	DDG-1000
Michael Monrroe	DDG-1001
Lyndon B. Johnson	DDG-1002



Arleigh Burke Class DDG Flight I and Flight II

USS Arleigh Burke	DDG-51	USS Paul Hamilton	DDG-60	USS Cole	DDG-67	USS Hopper	DDG-70
USS Barry	DDG-52	USS Ramage	DDG-61	USS The Sullivans	DDG-68	USS Ross	DDG-71
USS John Paul Jones	DDG-53	USS Fitzgerald	DDG-62	USS Millers	DDG-69	USS Mahan	DDG-72
USS Curtis Wilbur	DDG-54	USS Stephen	DDG-63			USS Decatur	DDG-73
USS Stout	DDG-55	USS Canby	DDG-64			USS McFaul	DDG-74
USS John S. McCain	DDG-56	USS Benfold	DDG-65			USS Donald Cook	DDG-75
USS Mitscher	DDG-57	USS Gonzalez	DDG-66			USS Higgins	DDG-76
USS Laboon	DDG-58					USS O'Kane	DDG-77
USS Russell	DDG-59					USS Porter	DDG-78



SURFACE COMBATANT

Guided Missile Cruiser

Ticonderoga Class CG

USS Bunker Hill CG-52
 USS Mobile Bay CG-53
 USS Anitama CG-54
 USS Leyte Gulf CG-55
 USS San Jacinto CG-56
 USS Lake Champlain CG-57
 USS Philippine Sea CG-58

USS Princeton CG-59
 USS Normandy CG-60
 USS Monterey CG-61
 USS Chancellorsville CG-62

USS Gettysburg CG-64
 USS Chosin CG-65
 USS Hue City CG-66
 USS Shiloh CG-67

USS Lake Erie CG-70
 USS Cape St. George CG-71
 USS Vella Gulf CG-72



Guided Missile Destroyer

Zumwalt Class DDG

Zumwalt DDG-1000
 Michael Monsoor DDG-1001
 Lyndon B. Johnson DDG-1002



Arleigh Burke Class DDG Flight I and Flight II

USS Arleigh Burke DDG-51
 USS Barry DDG-52
 USS John Paul Jones DDG-53
 USS Curtis Wilbur DDG-54
 USS Stout DDG-55
 USS John S. McCain DDG-56
 USS Mitscher DDG-57
 USS Laboon DDG-58
 USS Russell DDG-59

USS Paul Hamilton DDG-60
 USS Ramage DDG-61
 USS Fitzgerald DDG-62
 USS Stephens DDG-63
 USS Caney DDG-64
 USS Benfold DDG-65
 USS Gonzalez DDG-66

USS Cole DDG-67
 USS The Sullivans DDG-68
 USS Millie DDG-69

USS Hopper DDG-70
 USS Ross DDG-71
 USS Mahan DDG-72
 USS Decatur DDG-73
 USS McFaul DDG-74
 USS Donald Cook DDG-75
 USS Higgins DDG-76
 USS O'Kane DDG-77
 USS Porter DDG-78



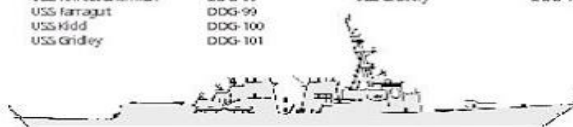
Arleigh Burke Class DDG Flight IIA

USS Oscar Austin DDG-79
 USS Roosevelt DDG-80
 USS Winston S. Churchill DDG-81
 USS Lassen DDG-82
 USS Howard DDG-83
 USS Bulkeley DDG-84
 USS McCampbell DDG-85
 USS Shoup DDG-86
 USS Mason DDG-87
 USS Preble DDG-88
 USS Mustin DDG-89
 USS Chafee DDG-90
 USS Anclney DDG-91
 USS Monssen DDG-92

USS Chung-Hoon DDG-93
 USS Nite DDG-94
 USS James E. Williams DDG-95
 USS Bainbridge DDG-96
 USS Halsey DDG-97
 USS Forrest Sherman DDG-98
 USS Farragut DDG-99
 USS Kidd DDG-100
 USS Grady DDG-101

USS Sampson DDG-102
 USS Truxtun DDG-103
 USS Sterett DDG-104
 USS Dewey DDG-105
 USS Stoddard DDG-106
 USS Gravely DDG-107

USS Wayne E. Meyer DDG-108
 USS Jason Dunham DDG-109
 USS William P. Lawrence DDG-110
 USS Spruance DDG-111
 USS Michael Murphy DDG-112
 John Finn DDG-113
 Ralph Johnson DDG-114
 Rafael Peralta DDG-115
 Thomas Hudner DDG-116
 Raul Ignatius DDG-117
 Daniel Inouye DDG-118

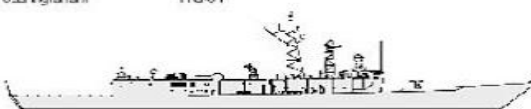


Guided Missile Frigate

Oliver Hazard Perry Class FFG

USS Halibut FFG-40
 USS McClusky FFG-41
 USS Kent FFG-46
 USS Vandegrift FFG-48
 USS Taylor FFG-50
 USS Gary FFG-51
 USS Brod FFG-55
 USS Simpson FFG-56

USS Samuel B. Roberts FFG-58
 USS Kaufman FFG-59
 USS Rodney M. Davis FFG-60
 USS Ingraham FFG-61



Littoral Combat Ship

Freedom Variant

USS Freedom LCS-1
 USS Fort Worth LCS-2
 Milwaukee LCS-5
 Detroit LCS-7
 Sioux City LCS-11
 Wichita LCS-12
 Billings LCS-15
 Indagaparis LCS-17

LCS-11
 LCS-12
 LCS-15
 LCS-17

Independence Variant

USS Independence LCS-2
 USS Coronado LCS-4
 Jackson LCS-6
 Montgomery LCS-8
 Gabrielle Giffords LCS-10
 Onizha LCS-12
 Manchester LCS-14
 Tulsa LCS-16

PATROL

Patrol Coastal

Cyclone Class PC

USS Tenpest PC-2
 USS Hurricane PC-3
 USS Monsoon PC-4
 USS Typhoon PC-5
 USS Simoco PC-6
 USS Squall PC-7
 USS Zephyr PC-8
 USS Chinook PC-9
 USS Firebolt PC-10
 USS Whirlwind PC-11
 USS Thunderbolt PC-12
 USS Shamal PC-13
 USS Tornado PC-14



■ Guided Missile Frigate

Oliver Hazard Perry Class FFG

USS Halyburton	FFG-40	USS Samuel B. Roberts	FFG-58
USS McClusky	FFG-41	USS Kauffman	FFG-59
USS Bente	FFG-46	USS Rodney M. Davis	FFG-60
USS Vandegrift	FFG-48	USS Ingraham	FFG-61
USS Taylor	FFG-50		
USS Gary	FFG-51		
USS Brod	FFG-55		
USS Simpson	FFG-56		



■ Littoral Combat Ship

Freedom Variant

USS Freedom	LCS-1	Sioux City	LCS-11
USS Fort Worth	LCS-3	Wichita	LCS-13
Milwaukee	LCS-5	Billings	LCS-15
Detroit	LCS-7	Indianapolis	LCS-17
Little Rock	LCS-9		



Independence Variant

USS Independence	LCS-2	Gabrielle Giffords	LCS-10
USS Coronado	LCS-4	Omaha	LCS-12
Jackson	LCS-6	Manchester	LCS-14
Montgomery	LCS-8	Tulsa	LCS-16



SUBMARINE

■ Submarine (Nuclear-Powered)

Los Angeles Class SSN

USS Bremerton	SSN-698
USS Jacksonville	SSN-699
USS Dallas	SSN-700
USS La Jolla	SSN-701
USS City of Corpus Christi	SSN-705
USS Albuquerque	SSN-706
USS San Francisco	SSN-711
USS Houston	SSN-713
USS Norfolk	SSN-714
USS Buffalo	SSN-715
USS Olympia	SSN-717
USS Providence	SSN-719

USS Pittsburgh	SSN-720
USS Chicago	SSN-721
USS Key West	SSN-722
USS Oklahoma City	SSN-723
USS Louisville	SSN-724
USS Helena	SSN-725
USS Newport News	SSN-750
USS San Juan	SSN-751
USS Pasadena	SSN-752

USS Albany	SSN-753
USS Topeka	SSN-754
USS Scranton	SSN-756
USS Alexandria	SSN-757
USS Asheville	SSN-758
USS Jefferson City	SSN-759
USS Annapolis	SSN-760
USS Springfield	SSN-761
USS Columbus	SSN-762

USS Santa Fe	SSN-763
USS Boise	SSN-764
USS Montpelier	SSN-765
USS Charlotte	SSN-766
USS Hampton	SSN-767
USS Hartford	SSN-768
USS Toledo	SSN-769
USS Tucson	SSN-770
USS Columbia	SSN-771
USS Greenville	SSN-772
USS Cheyenne	SSN-773



Seawolf Class SSN

USS Seawolf	SSN-21
USS Connecticut	SSN-22
USS Jimmy Carter	SSN-23

Virginia Class SSN

USS Virginia	SSN-774
USS Texas	SSN-775
USS Hawaii	SSN-776
USS North Carolina	SSN-777
USS New Hampshire	SSN-778
USS New Mexico	SSN-779

USS Missouri	SSN-780
USS California	SSN-781
USS Mississippi	SSN-782
USS Minnesota	SSN-783

North Dakota	SSN-784
John Warner	SSN-785
Illinois	SSN-786

Washington	SSN-787
Colorado	SSN-788
Indiana	SSN-789
South Dakota	SSN-790
Delaware	SSN-791



■ Ballistic Missile Submarine (Nuclear-Powered)

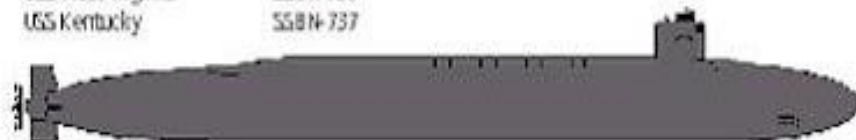
Ohio Class SSBN

USS Henry M. Jackson	SSBN-730
USS Alabama	SSBN-731
USS Alaska	SSBN-732
USS Nevada	SSBN-733

USS Tennessee	SSBN-734
USS Pennsylvania	SSBN-735
USS West Virginia	SSBN-736
USS Kentucky	SSBN-737

USS Maryland	SSBN-738
USS Nebraska	SSBN-739

USS Rhode Island	SSBN-740
USS Maine	SSBN-741
USS Wyoming	SSBN-742
USS Louisiana	SSBN-743



■ Guided Missile Submarine (Nuclear-Powered)

Ohio Class SSGN

USS Ohio	SSGN-726
USS Michigan	SSGN-727
USS Florida	SSGN-728
USS Georgia	SSGN-729



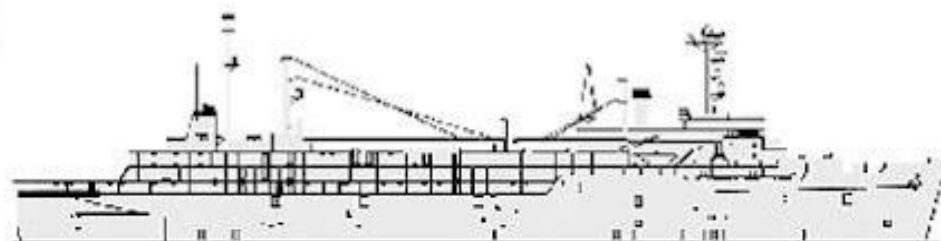
AUXILIARY

■ Submarine Tender

Emory S. Land Class AS

Emory S. Land
Frank Cable

AS-39
AS-40



■ Environmental Research Ship

AGER-2 Class

USS Pueblo

AGER-2



MINE WARFARE

■ Mine Countermeasures Ship

Avenger Class MCM

USS Avenger
USS Defender
USS Sentry
USS Champion
USS Devastator

MCM-1
MCM-2
MCM-3
MCM-4
MCM-6

USS Patriot
USS Scout
USS Pioneer

MCM-7
MCM-8
MCM-9

USS Warrior
USS Gladiator
USS Ardent
USS Dextrous
USS Chief

MCM-10
MCM-11
MCM-12
MCM-13
MCM-14



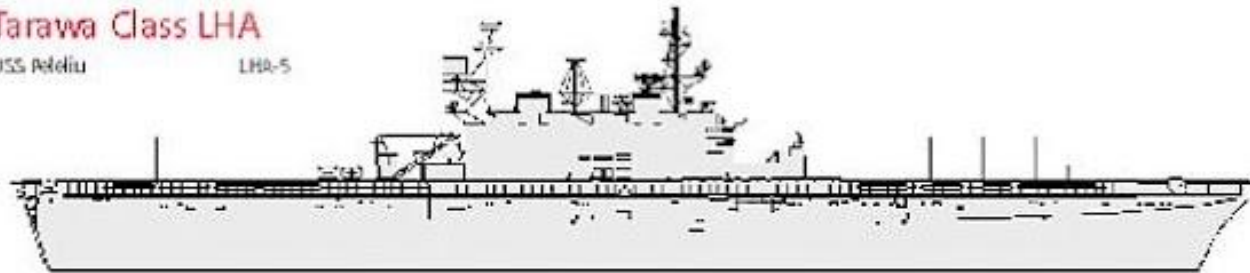
AMPHIBIOUS

■ Amphibious Assault Ship

Tarawa Class LHA

USS Peleliu

LHA-5



Wasp Class LHD

USS Wasp

LHD-1

USS Essex

LHD-2

USS Kearsarge

LHD-3

USS Boxer

LHD-4

USS Bataan

LHD-5

USS Bonhomme Richard

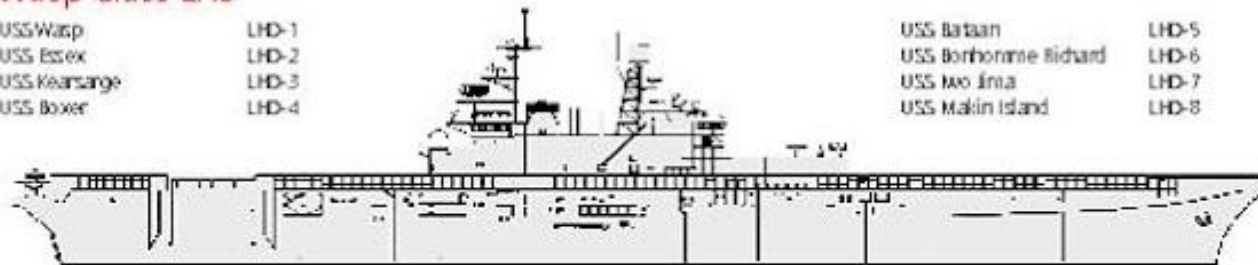
LHD-6

USS Iwo Jima

LHD-7

USS Makin Island

LHD-8



America Class LHA

America

LHA-6

Tipoli

LHA-7



■ Amphibious Transport Dock

San Antonio Class LPD

USS San Antonio	LPD-17	USS San Diego	LPD-22	USS Arlington	LPD-24
USS New Orleans	LPD-18	USS Anchorage	LPD-23	USS Somerset	LPD-25
USS Mesa Verde	LPD-19			USS John P. Murtha	LPD-26
USS Green Bay	LPD-20			Portland	LPD-27
USS New York	LPD-21				



Austin Class LPD

USS Denver	LPD-9
------------	-------



■ Dock Landing Ship

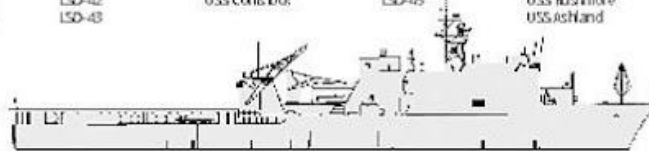
Harpers Ferry Class LSD

USS Harpers Ferry	LSD-49
USS Carter Hall	LSD-50
USS Oak Hill	LSD-51
USS Pearl Harbor	LSD-52



Whidbey Island LSD

USS Whidbey Island	LSD-41	USS Gunston Hall	LSD-44	USS Tortuga	LSD-46
USS Germantown	LSD-42	USS Condit	LSD-45	USS Rushmore	LSD-47
USS Fort McHenry	LSD-43			USS Ashland	LSD-48



■ Command Ship

Blue Ridge Class LCC

USS Blue Ridge	LCC-19
USS Mount Whitney	LCC-20

