



1759

# Royal Botanic Gardens-Kew

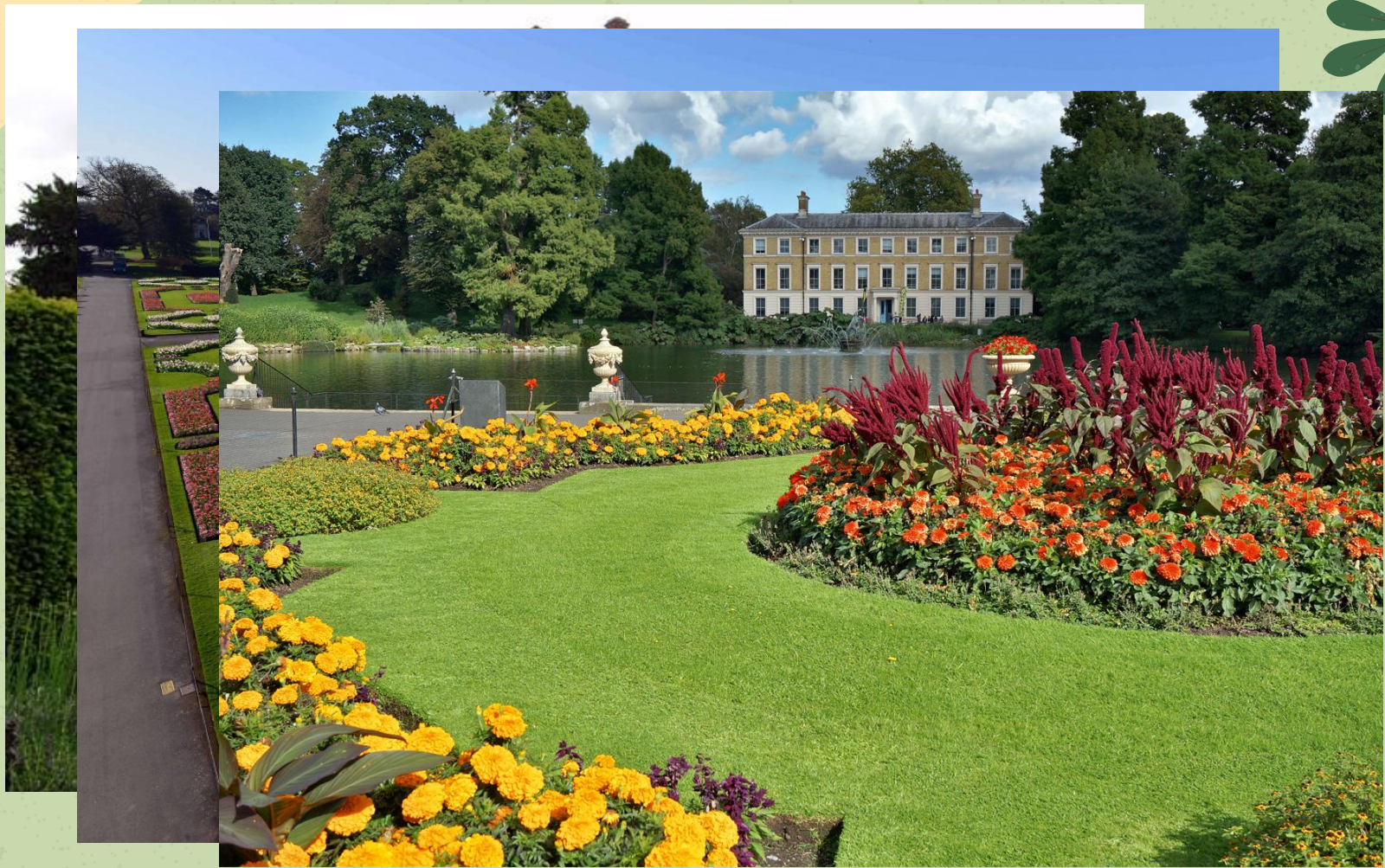
World Heritage in London





**The Royal Botanic Gardens, Kew, were officially established in 1759.**





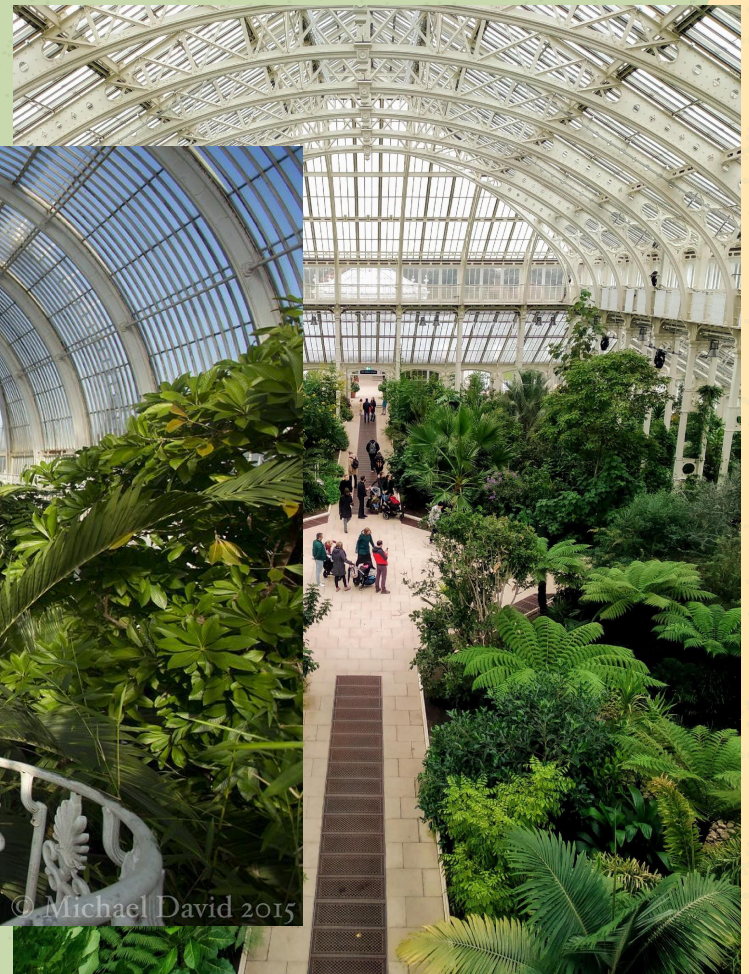




# large Palm House



© Michael David 2015







**Water Lily House**









conservatory





# Royal Botanic Gardens, Kew Palace





**Risotron, a modern combination of plasma screens and bronze sculpture.**







**The end,  
thank you for your  
attention!**

