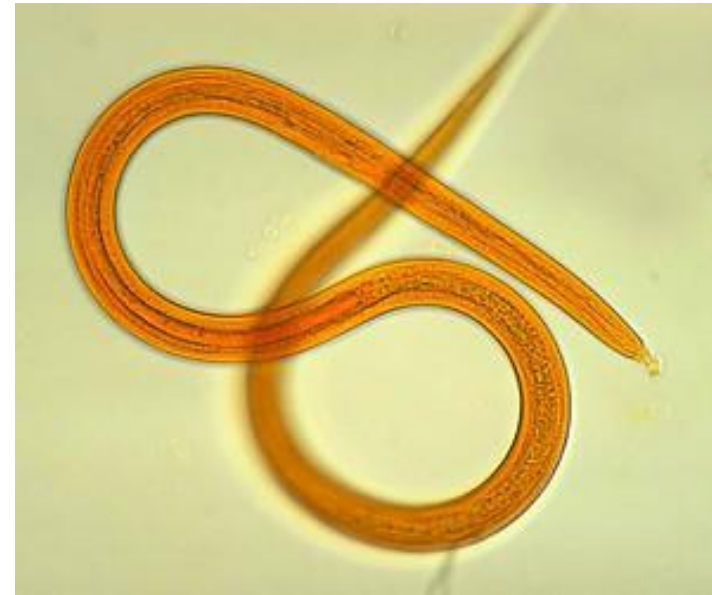


# Nematode (Round worms)

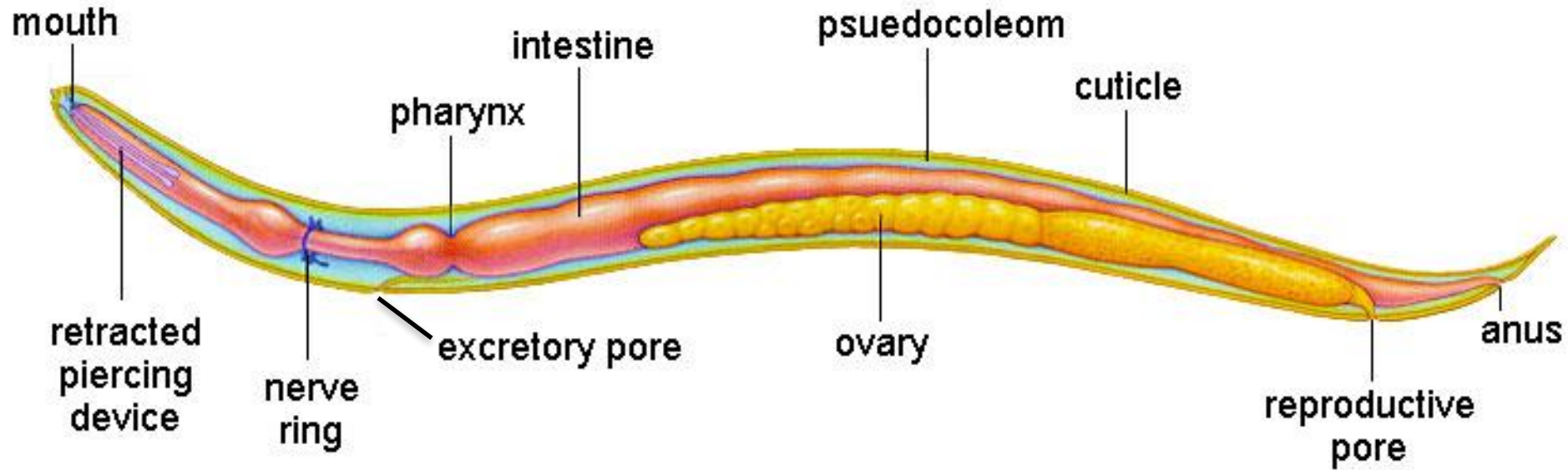


**Ascaris lumbricoides**

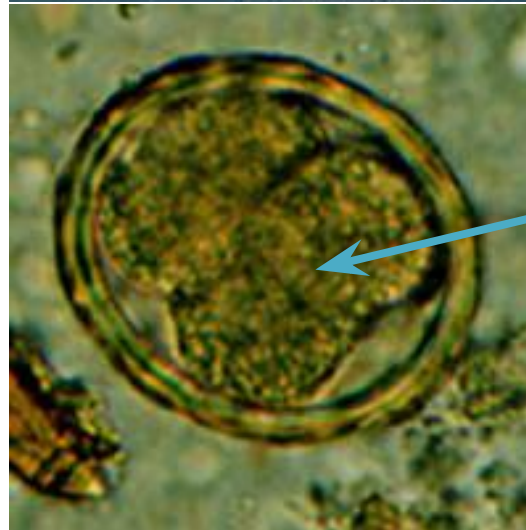
# Nematode (Round worms)

- Mostly live in sediment layers of water and in soil.
- They are **decomposers** (saprophytic) or **Parasitic**.
- Their sex are separated.
- Anus and mouth are separated.
- Trichina worm, hook worm, ascarid worm are parasite in human.

# Anatomy of Nematodes

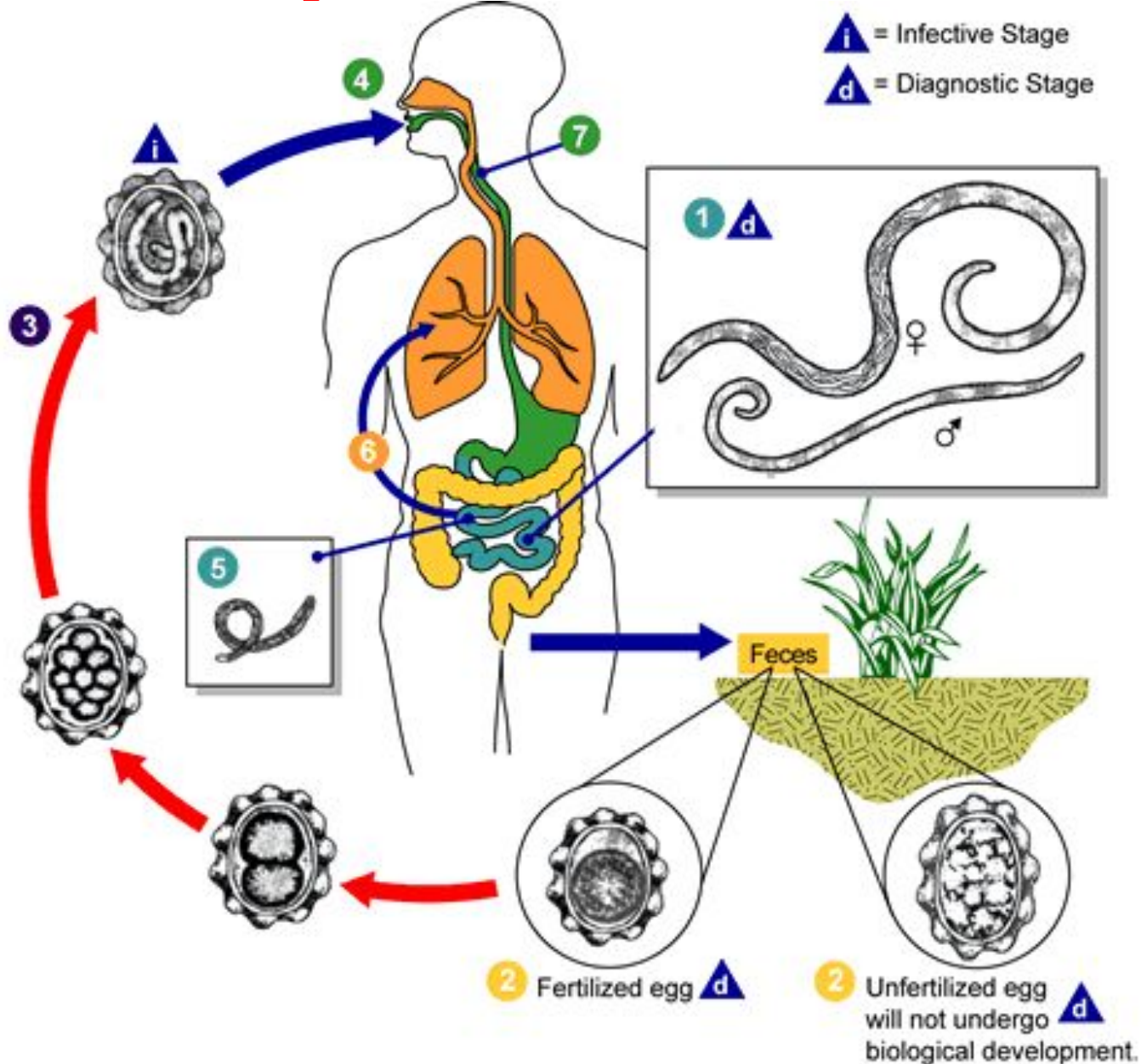


*Ascaris lumbricoides* lives in **human intestines** parasitically.



← A cyst of Ascarida

# Life cycle of Ascarida





# Elephantiasis



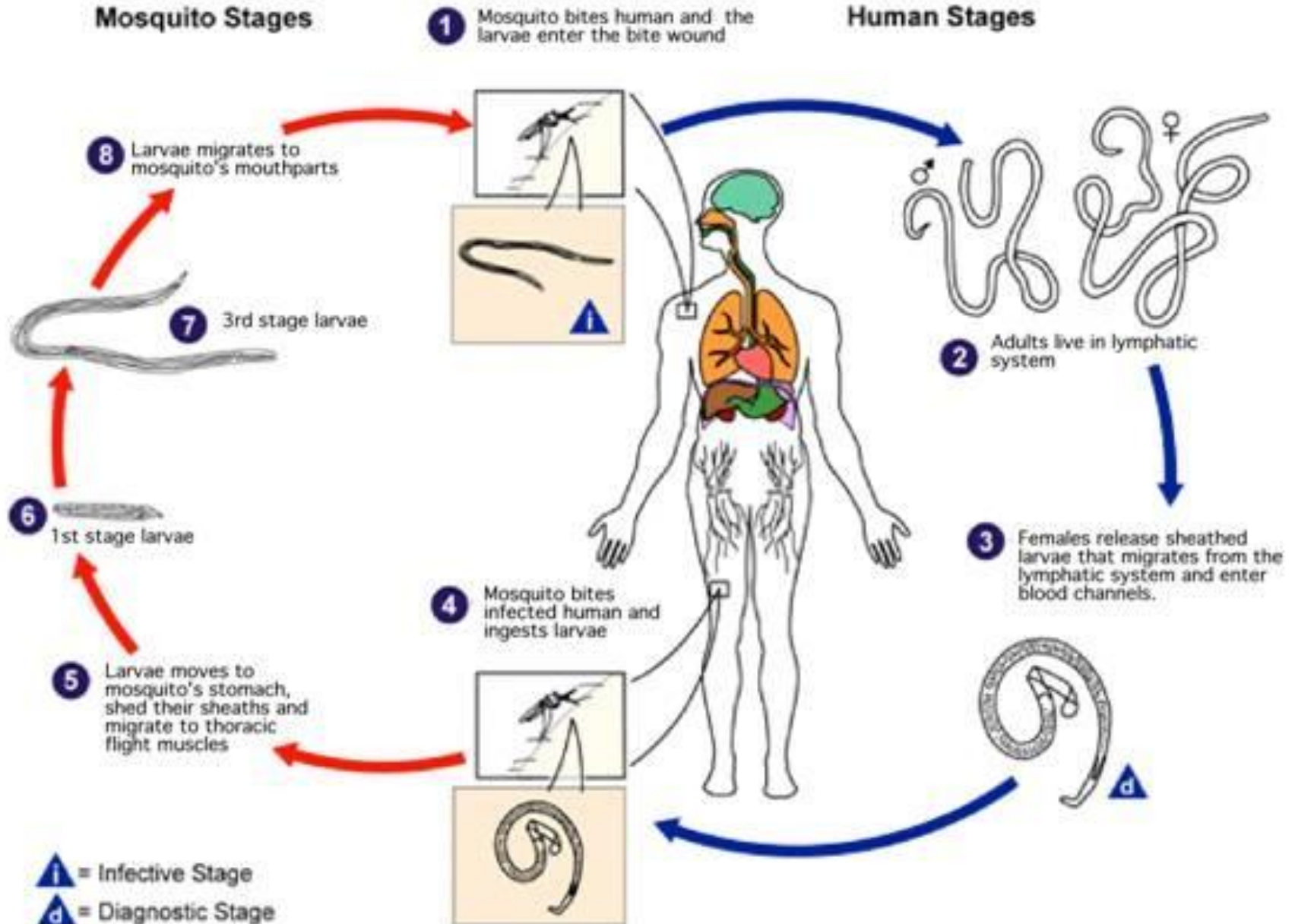
*Wuchereria bancrofti* causes **elephantiasis** in Human

# Life Cycle of *Wuchereria bancrofti*

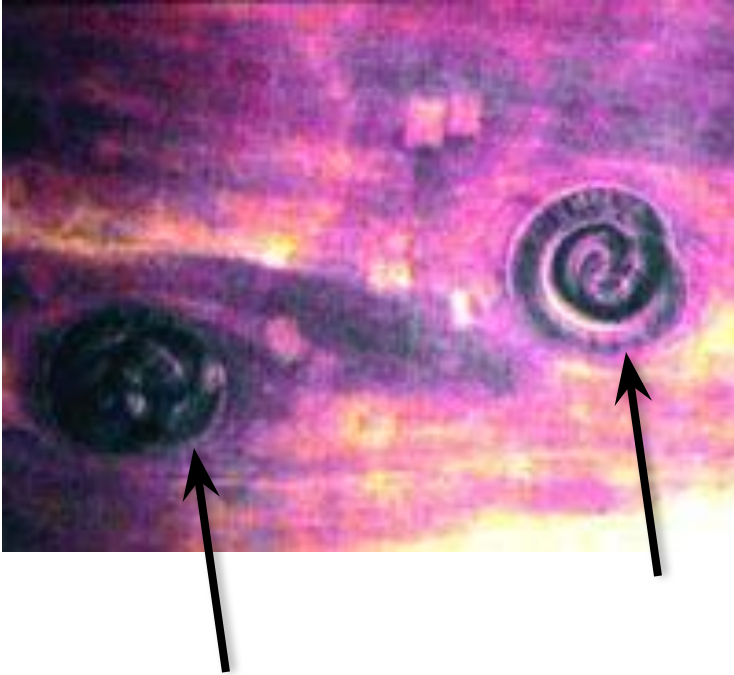
## *Wuchereria bancrofti*

### Mosquito Stages

### Human Stages



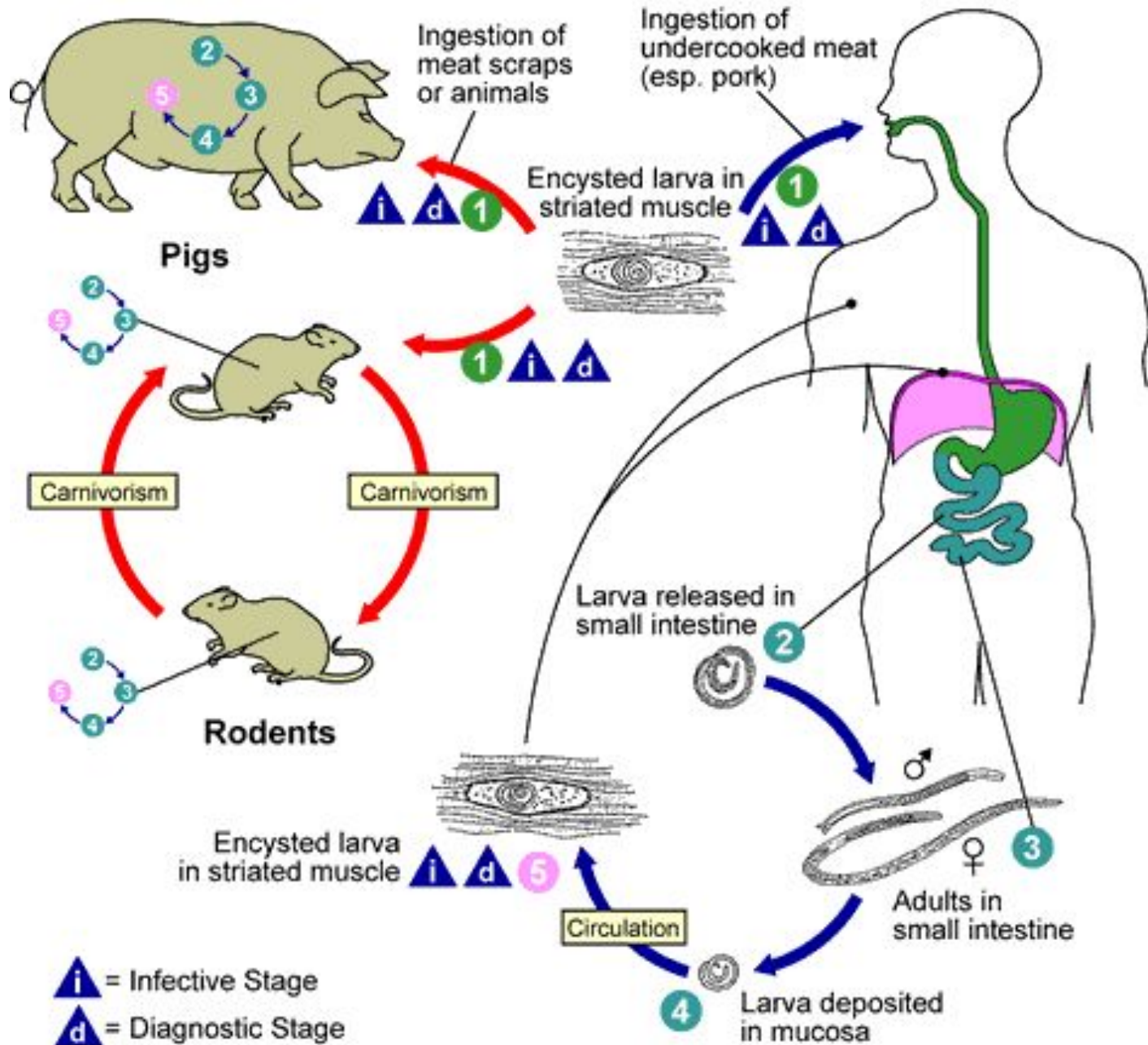
# Trichina



Trichina worm's larva in meat.



# Life Cycle of Trichina Worm



# Questions

**1. What causes the disease called elephantiasis?**

- A) Flukes**
- B) Tapeworms**
- C) Filaria**
- D) Ascarid worms**
- E) Planaria**

**2. Ascaris worm lives in human \_\_\_\_\_ as parasite.**

**3. Which of the following is taken from improperly cooked pork products?**

- A) Trichina**
- B) Ascarida**
- C) Flukes**
- D) Filaria**
- E) Planaria**

# Answers

**1. What causes the disease called elephantiasis?**

- A) Flukes                      B) Tapeworms    C) Fila **C) Filaria**  
D) Ascarid worms          E) Planaria

**2. Ascaris worm lives in human intestines as parasite.**

**3. Which of the following is taken from improperly cooked pork products?**

- A) Trichina**                      B) Ascarida          C) Flukes  
D) Filaria                      E) Planaria