

POLO

Maintenance Instruction

TABLE OF CONTENTS

1 about POLO

2 Distribution of the main board components

2.1 TOP

2.2 BOTTOM

3 Baseband

3.1 System block Diagram

3.2 Power management

3.2.1 Block Diagram

3.2.2 Power list

4 Reference for maintenance

4.1 No power on

4.2 Download fail

4.3 Audio

4.3.1 No ring

4.3.2 No receiving voice

4.3.3 Speaker echo

4.3.4 No sending voice

4.3.5 Earphone detect fail

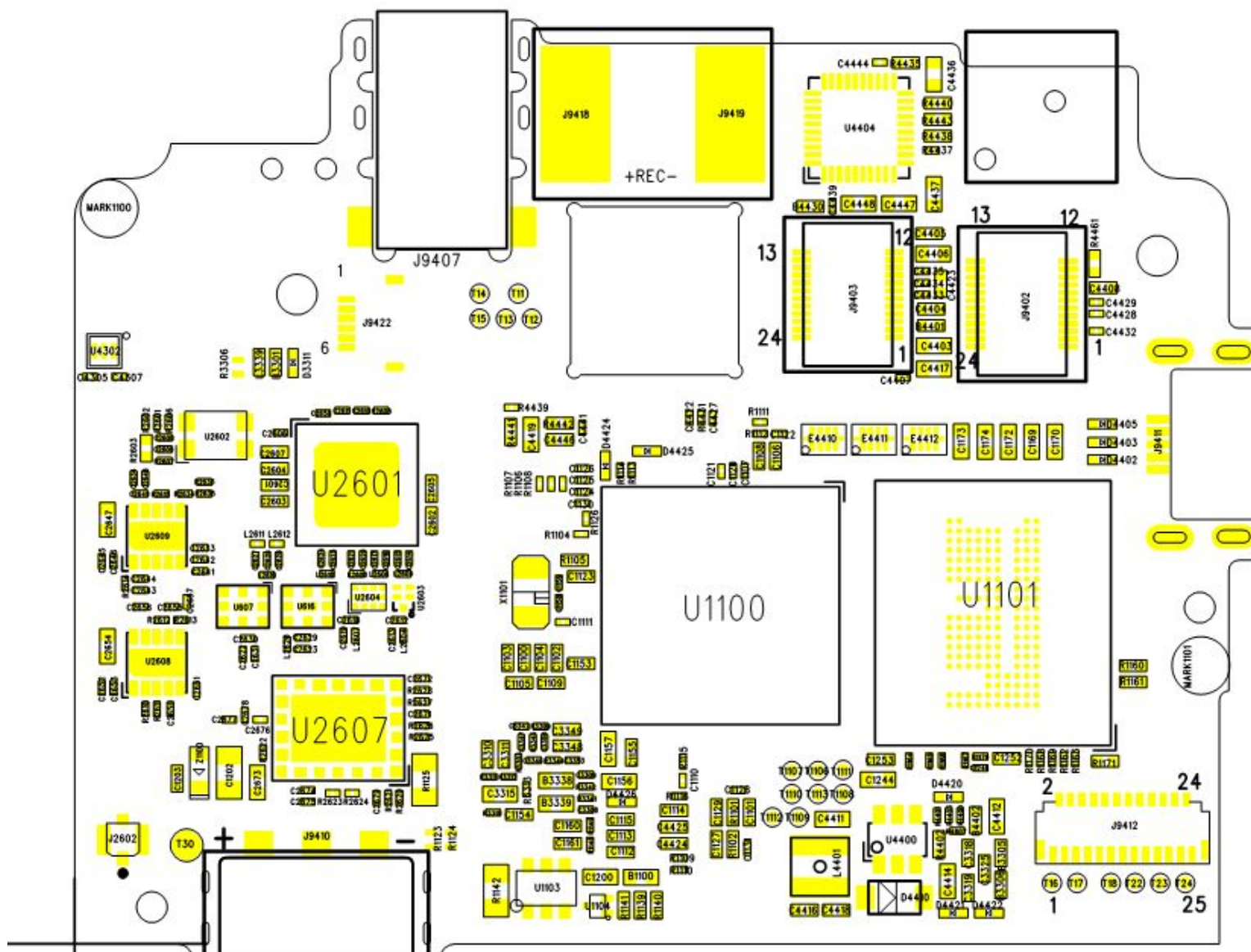
4.3.6 Earphone inefficacy

- 4.4 No vibration
- 4.5 No charge
- 4.6 Camera inefficacy
- 4.7 LCD
 - 4.7.1 LCD display wrong
 - 4.7.2 LCD backlight inefficacy
- 4.8 Bluetooth
 - 4.8.1 power on fail
 - 4.8.2 Connect fail/bad voice
- 4.9 WIFI inefficacy
- 4.10 FM inefficacy
- 4.11 Key NG
- 4.12 KEY LED NG
- 4.13 Sensor
 - 4.13.1 proximity sensor NG
 - 4.13.2 Gsensor NG
- 4.14 SIM card inefficacy
- 4.15 TF card inefficacy
- 4.16 GPS inefficacy
- 4.17 TP inefficacy

1 . About POLO

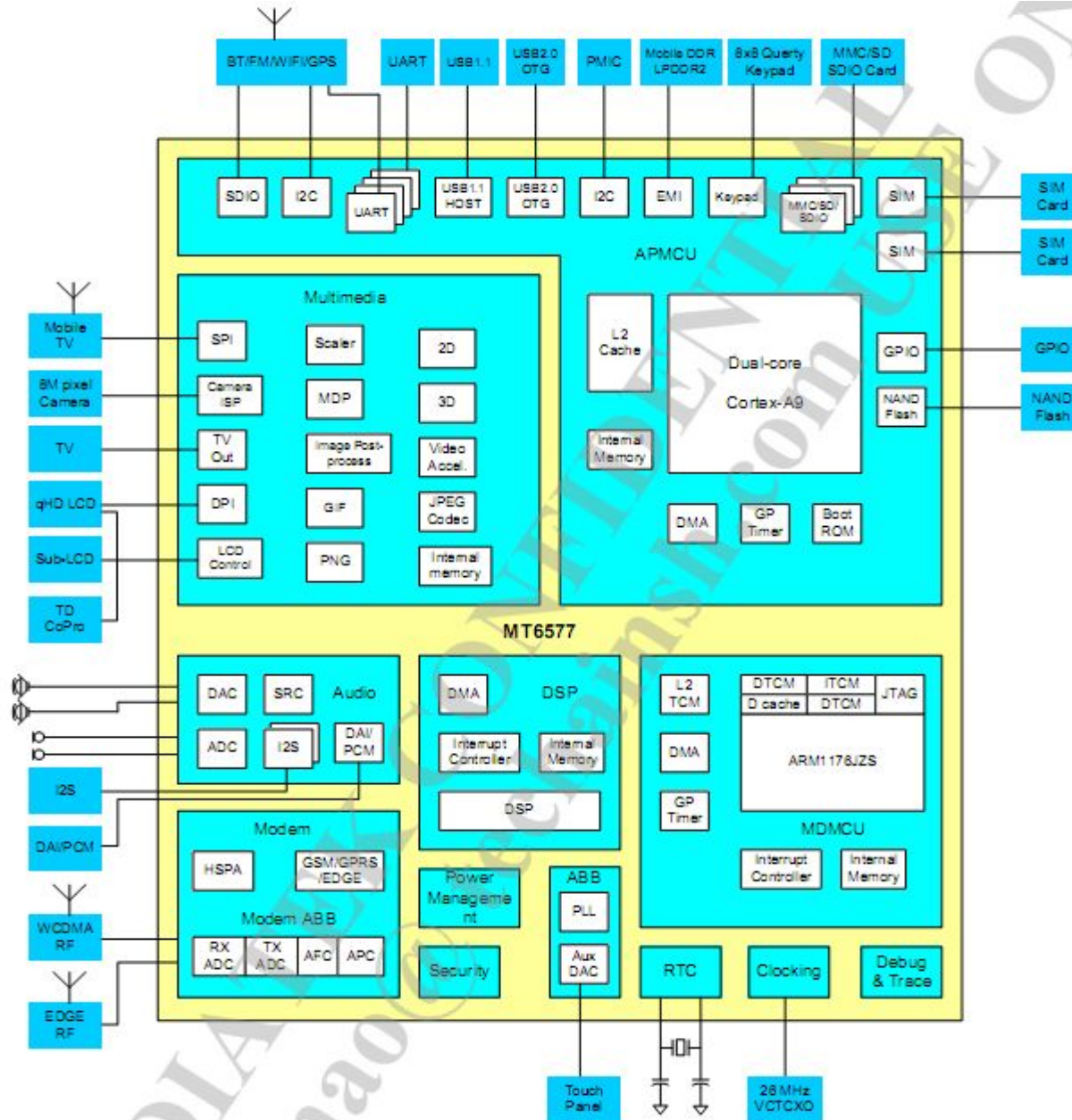
POLO is based on MTK MT6577 platform designed Smartphone.
Support all main functions like WIFI/GPS/BT/FM/CTP and so on.

2.1 TOP



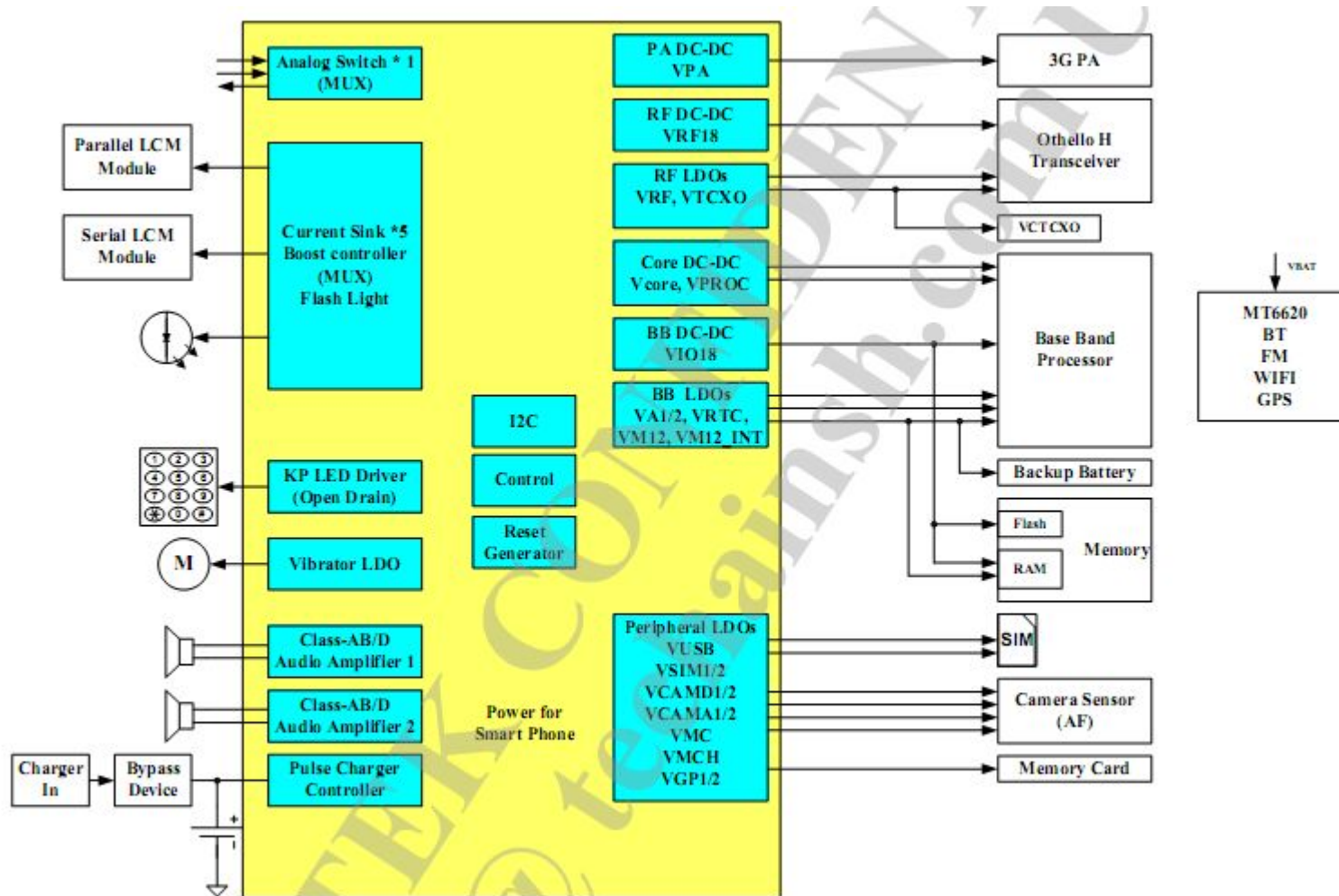
3 Baseband

3.1 System block Diagram



3.2 Power management

3.2.1 power management Block Diagram

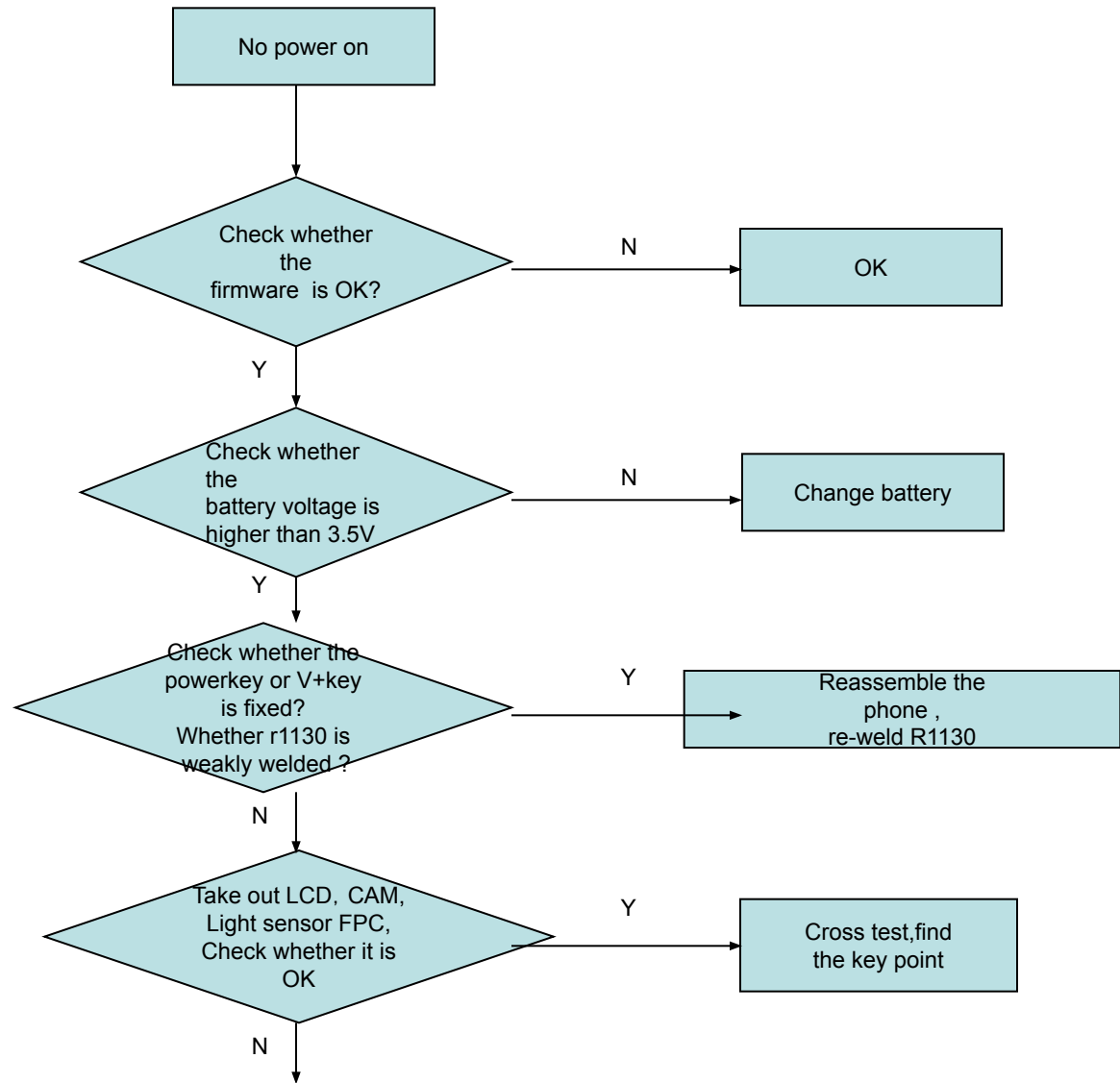


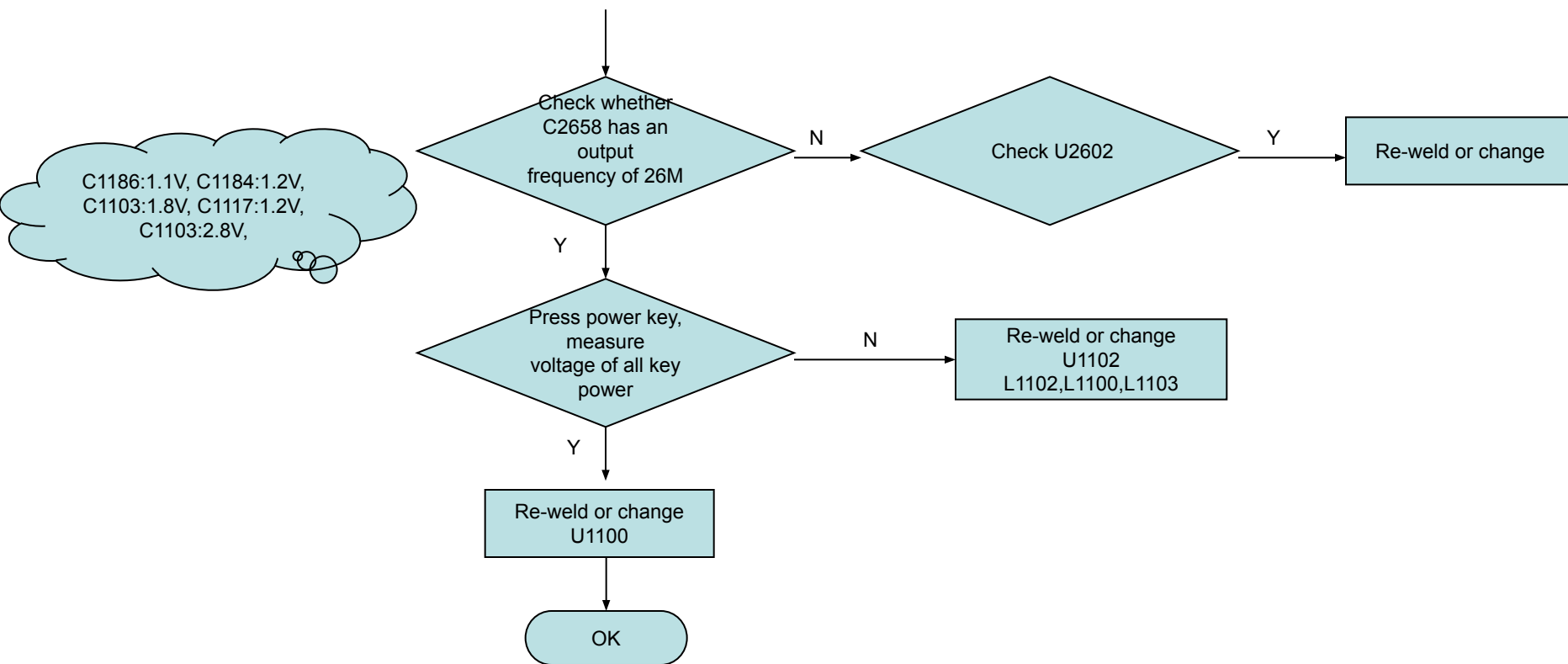
MT6329 Power List

	Symbol	Vout (V)	Iout (mA)
Buck	VPA	0.9 ~ 3.4 (100mV/step)	800
	VPROC	0.75 ~ 1.3 (25mV/step)	1500
	VRF1B	1.825	250
	VCDRE	0.75 ~ 1.3 (25mV/step)	1000
	VIO1B	1.8	1000
Analog LDO	VRF2B	2.85	200
	VTCKO	2.8	40
	VCAMA	1.5/1.6/2.5/2.8	200
Digital LDO	VA1	1.8/2.0/2.1/2.5	100
	VA2	2.5/2.8	100
	VM12_1	1.2	300
	VM12_2	1.2	300
	VM12_INT	1.2	300
	VIO2B	2.8	100
	VSIM1	1.8/3.0	100
	VSIM2	1.3/1.5/1.8/2.5/2.8/3.0/3.3	100
	VUSB	3.3	100
	VCAMD	1.2/1.3/1.5/1.8/2.5/2.8/3.0/3.3	300
	VCAM_IO	1.3/1.5/1.8/2.5/2.8/3.0/3.3	100
	VCAM_AF	1.3/1.5/1.8/2.5/2.8/3.0/3.3	200
	VMC	1.3/1.5/1.8/2.5/2.8/3.0/3.3	200
	VMCH	1.3/1.5/1.8/2.5/2.8/3.0/3.3	400
	VGP	1.3/1.5/1.8/2.5/2.8/3.0/3.3	100
	VGP2	1.3/1.5/1.8/2.5/2.8/3.0/3.3	100
Vibrator	VIBR	1.3/1.5/1.8/2.5/2.8/3.0/3.3	200
RTC	VRTC	1.8/2.0/2.1/2.8	2

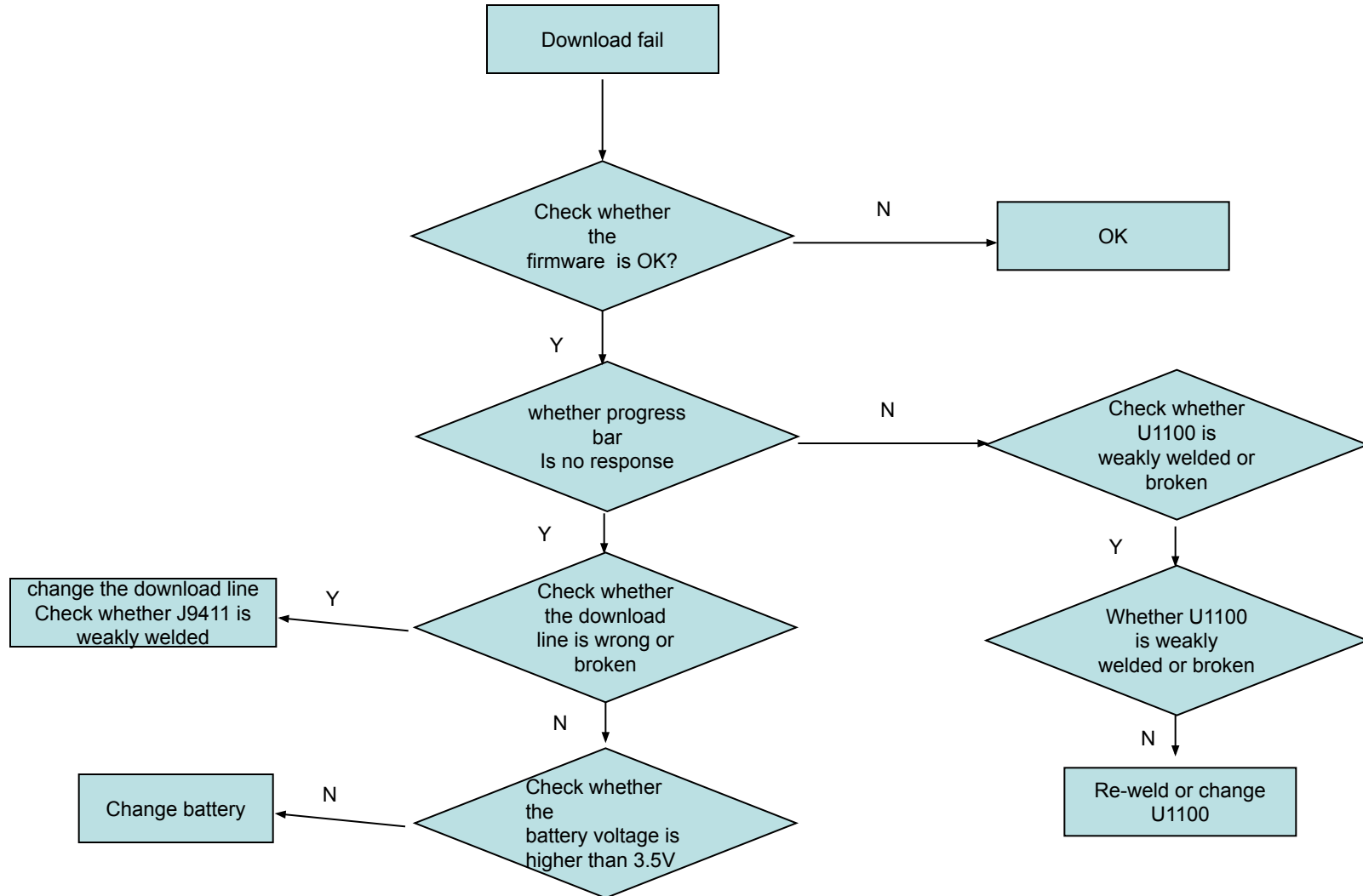
4 Reference for maintenance

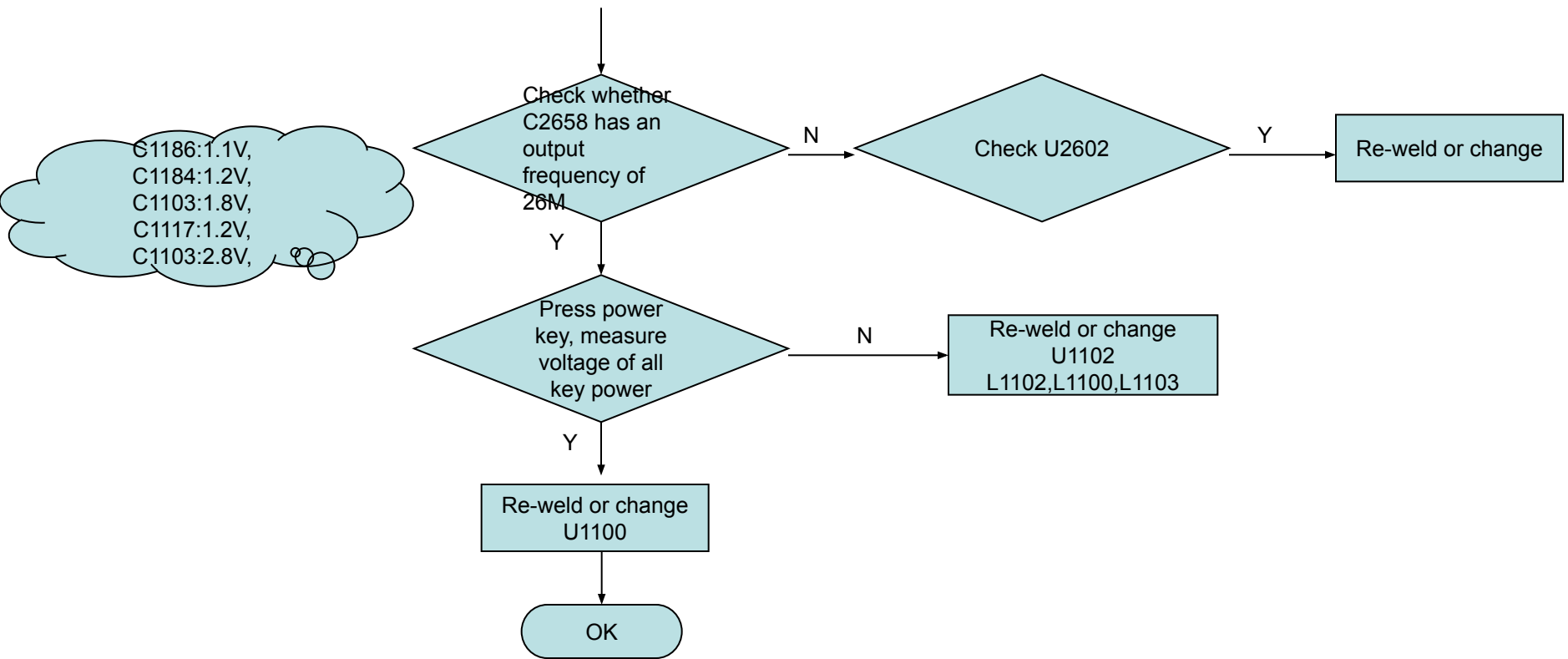
4.1 No power on



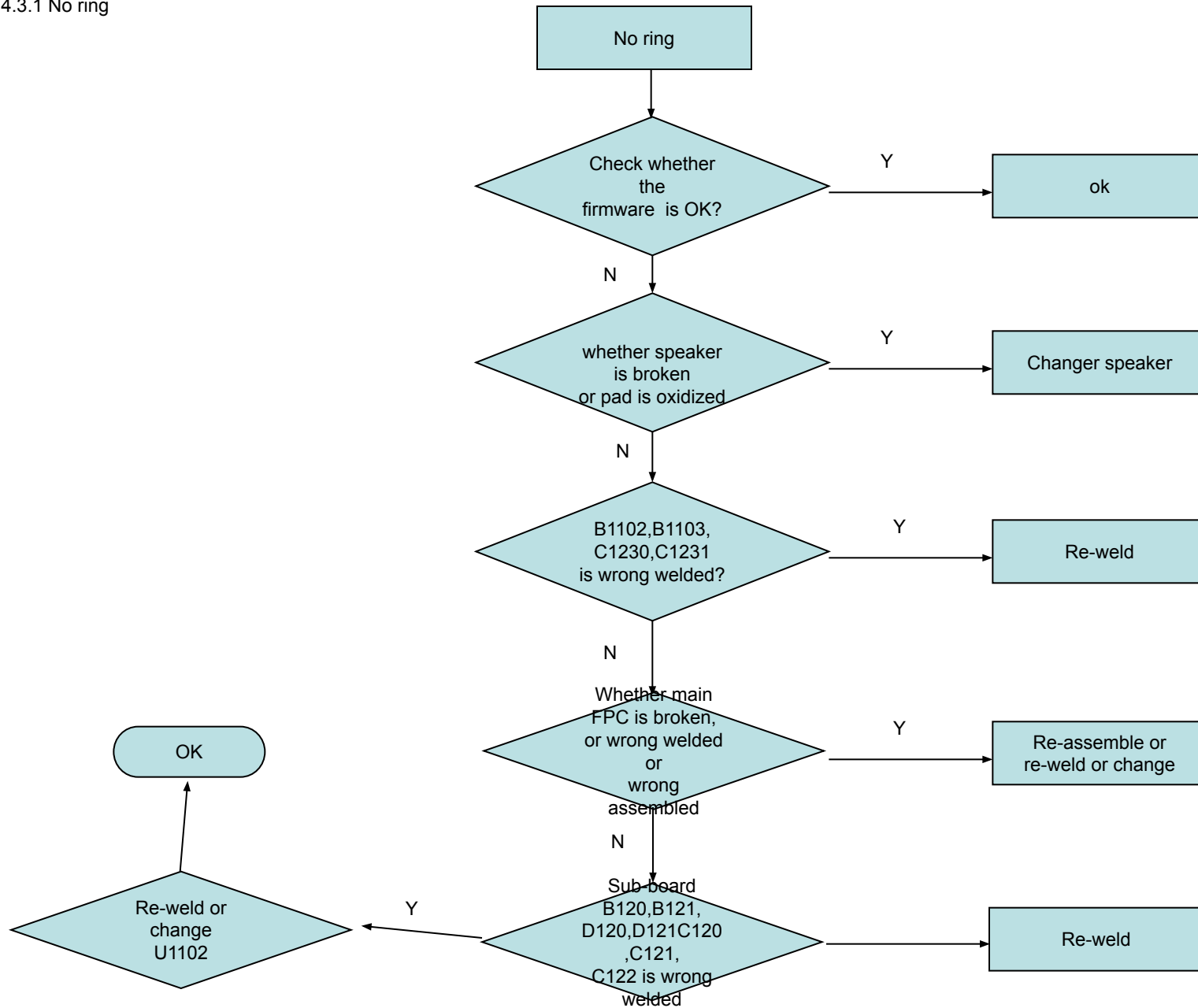


4.2 Download fail

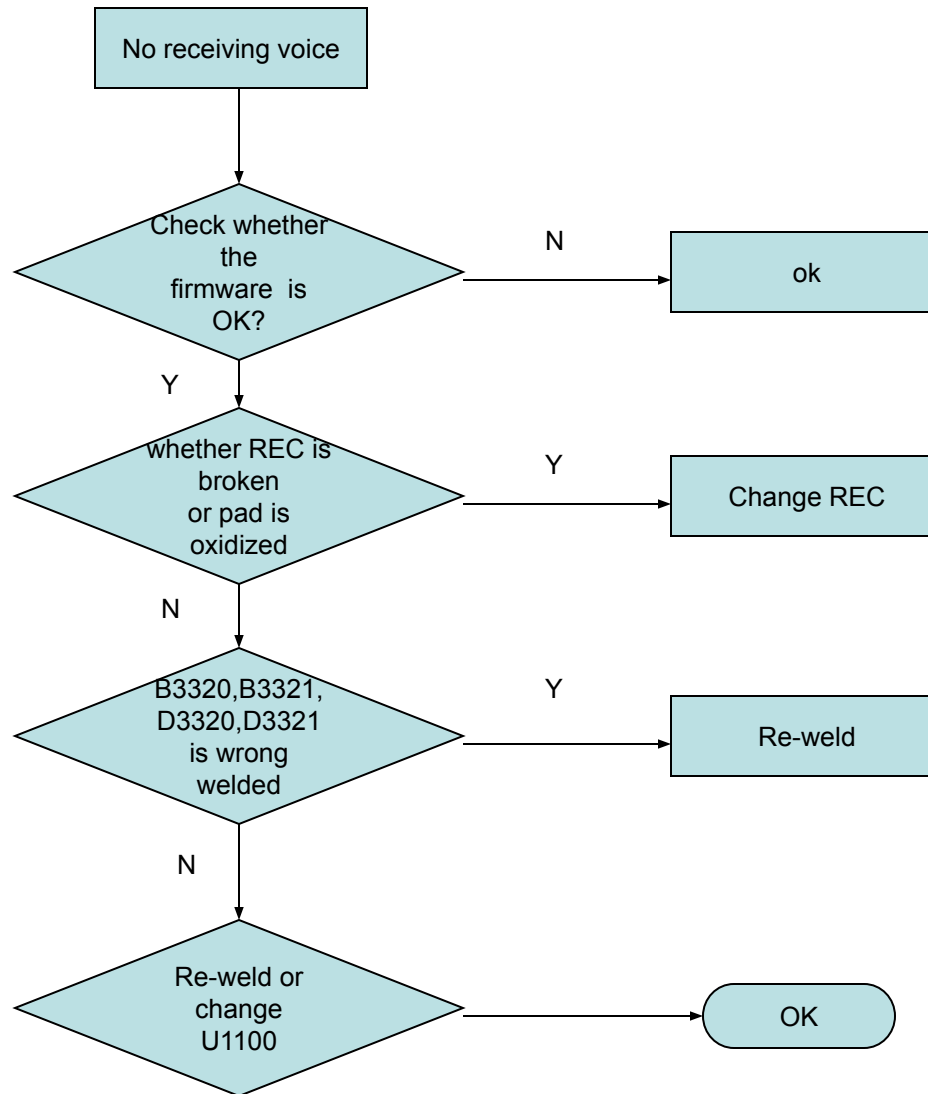




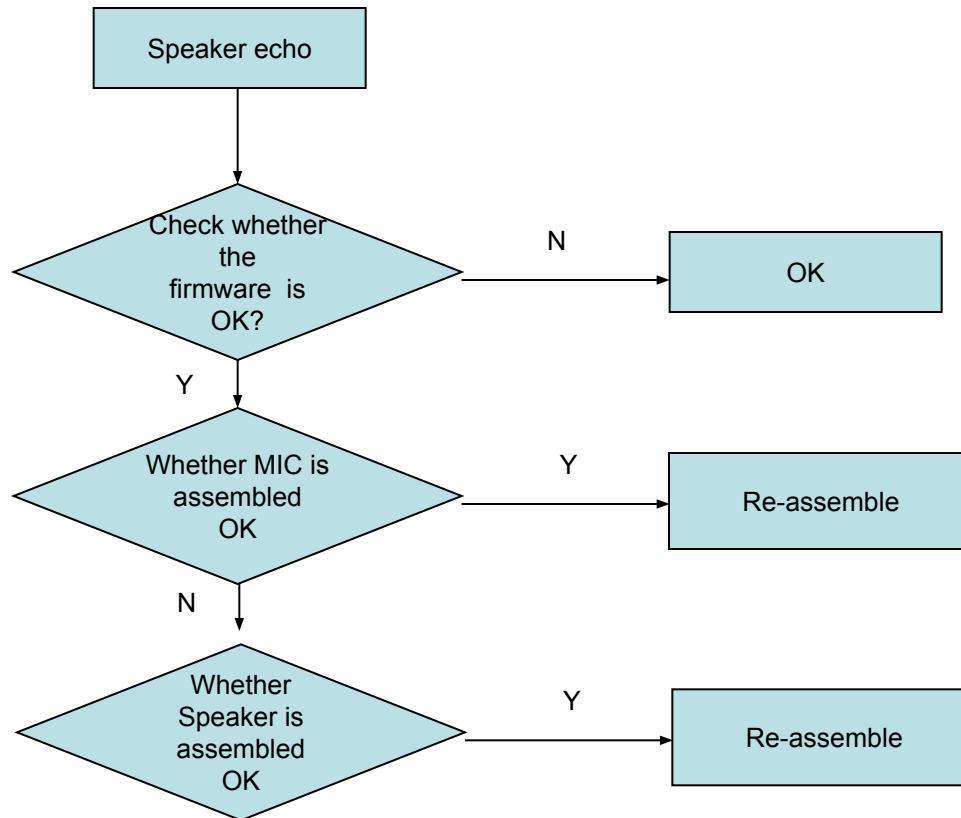
4.3.1 No ring



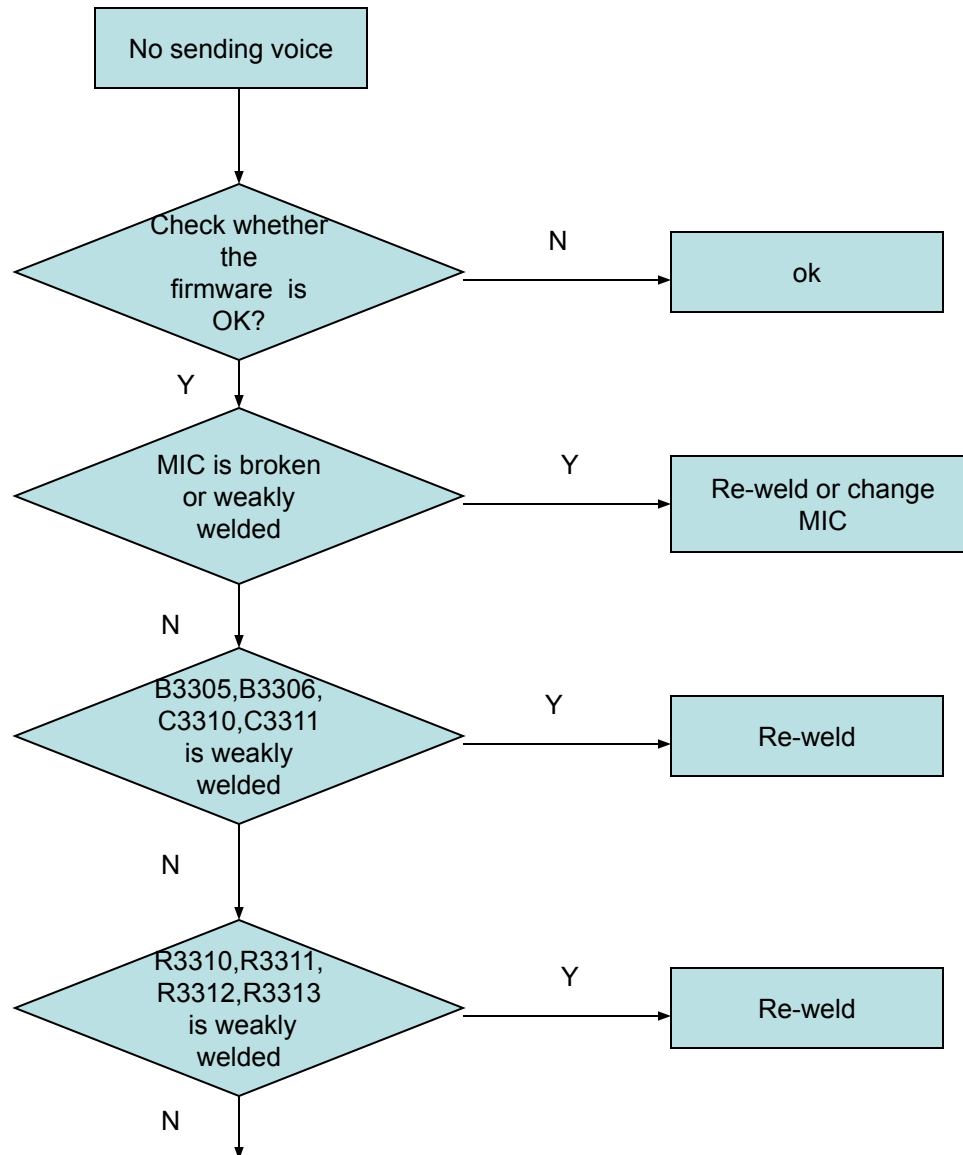
4.3.2 No receiving voice

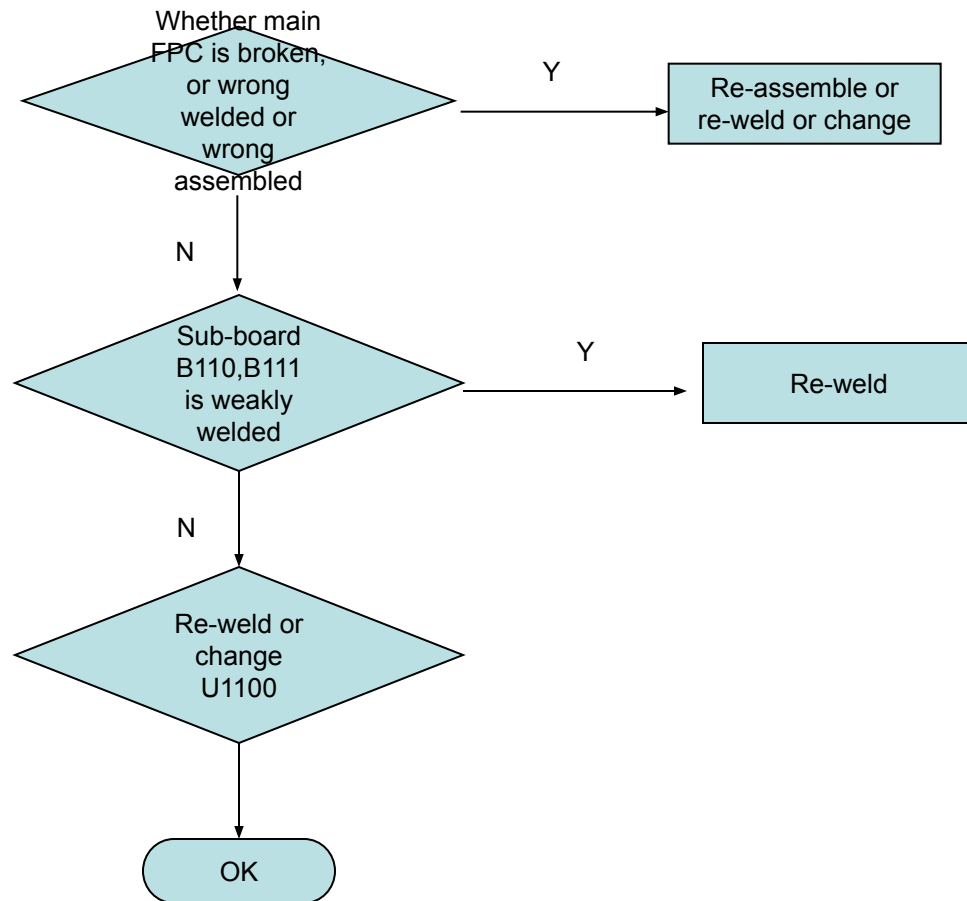


4.3.3 Speaker echo

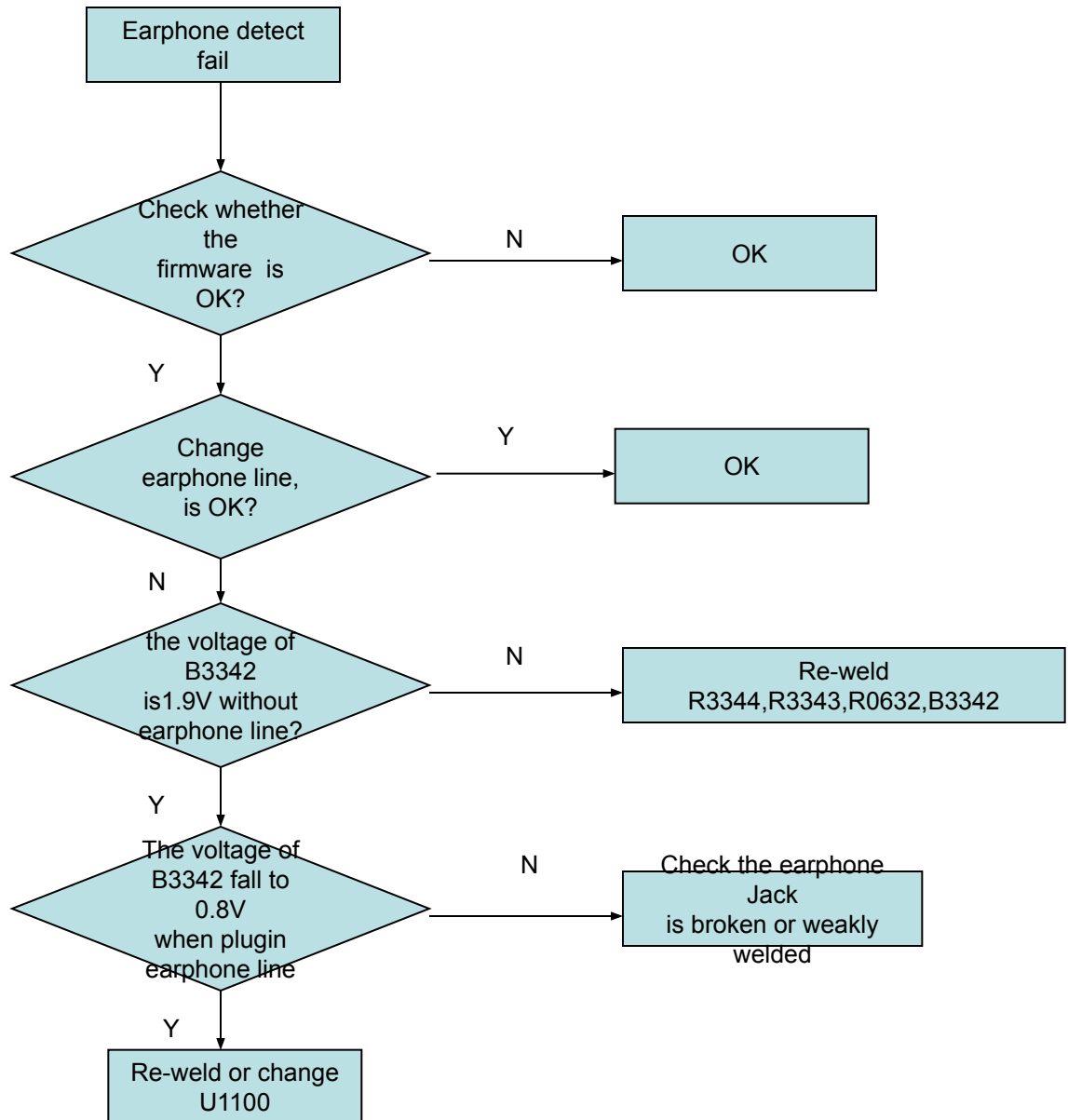


4.3.4 No sending voice

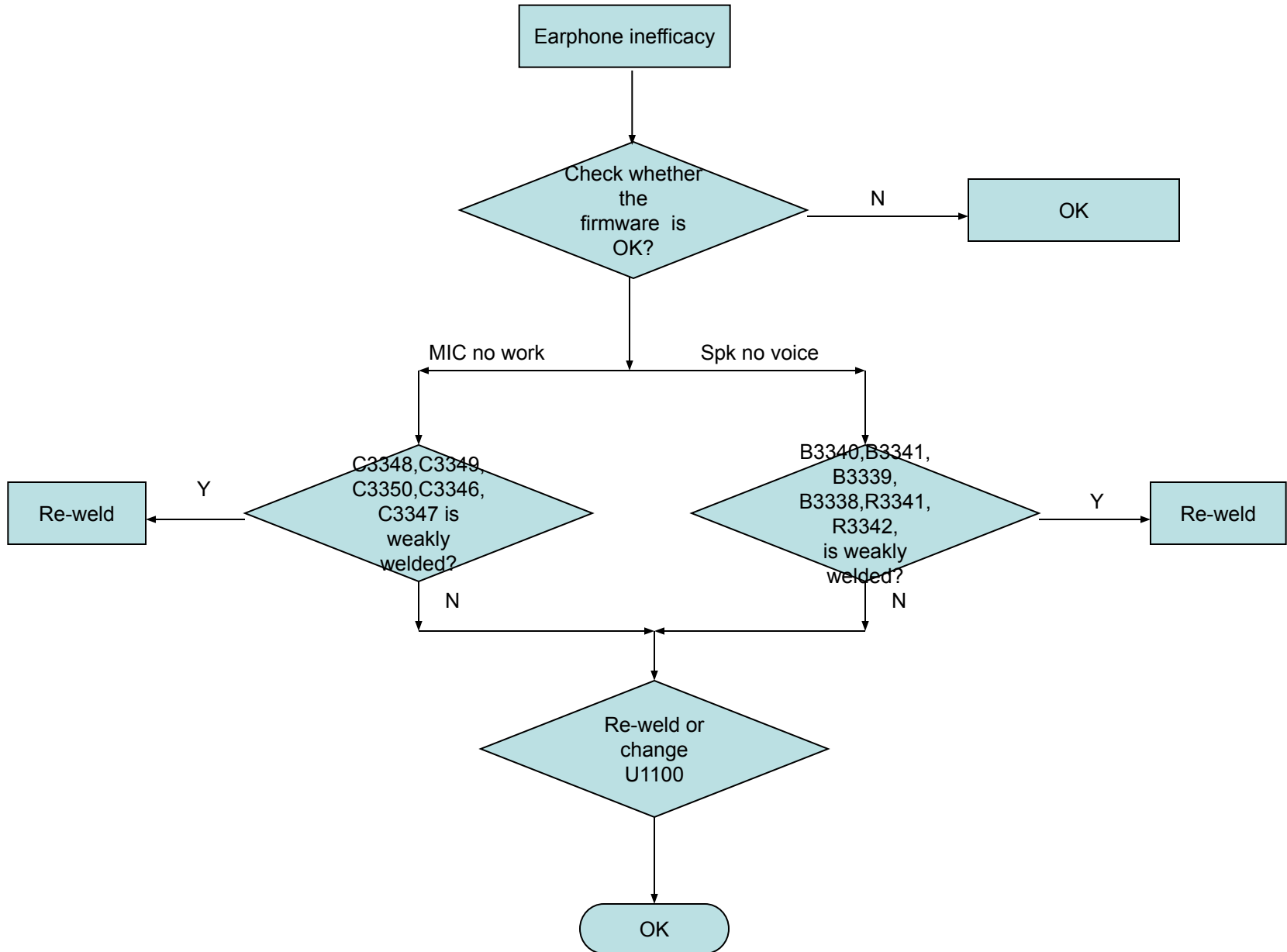




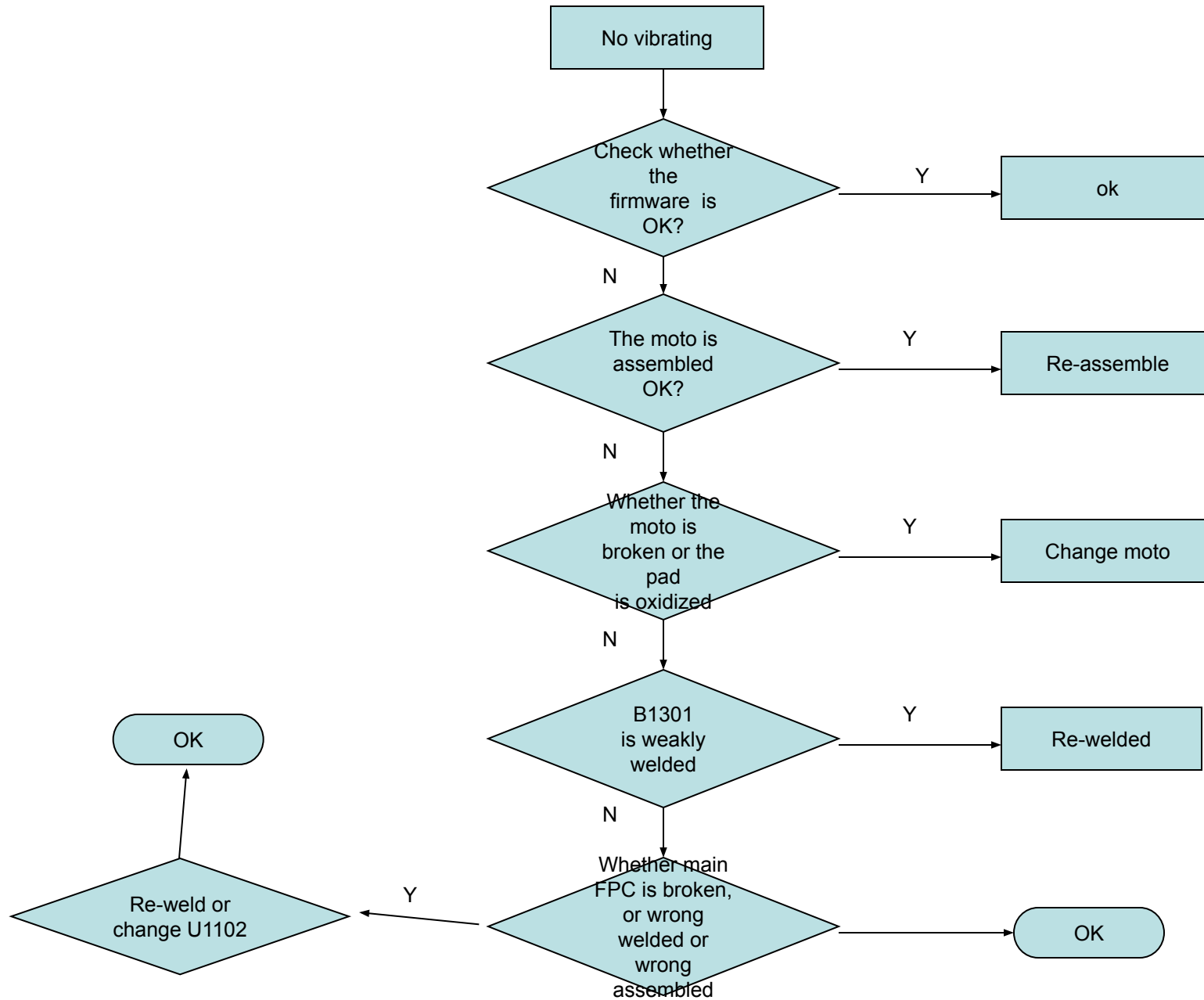
4.3.5 Earphone detect fail



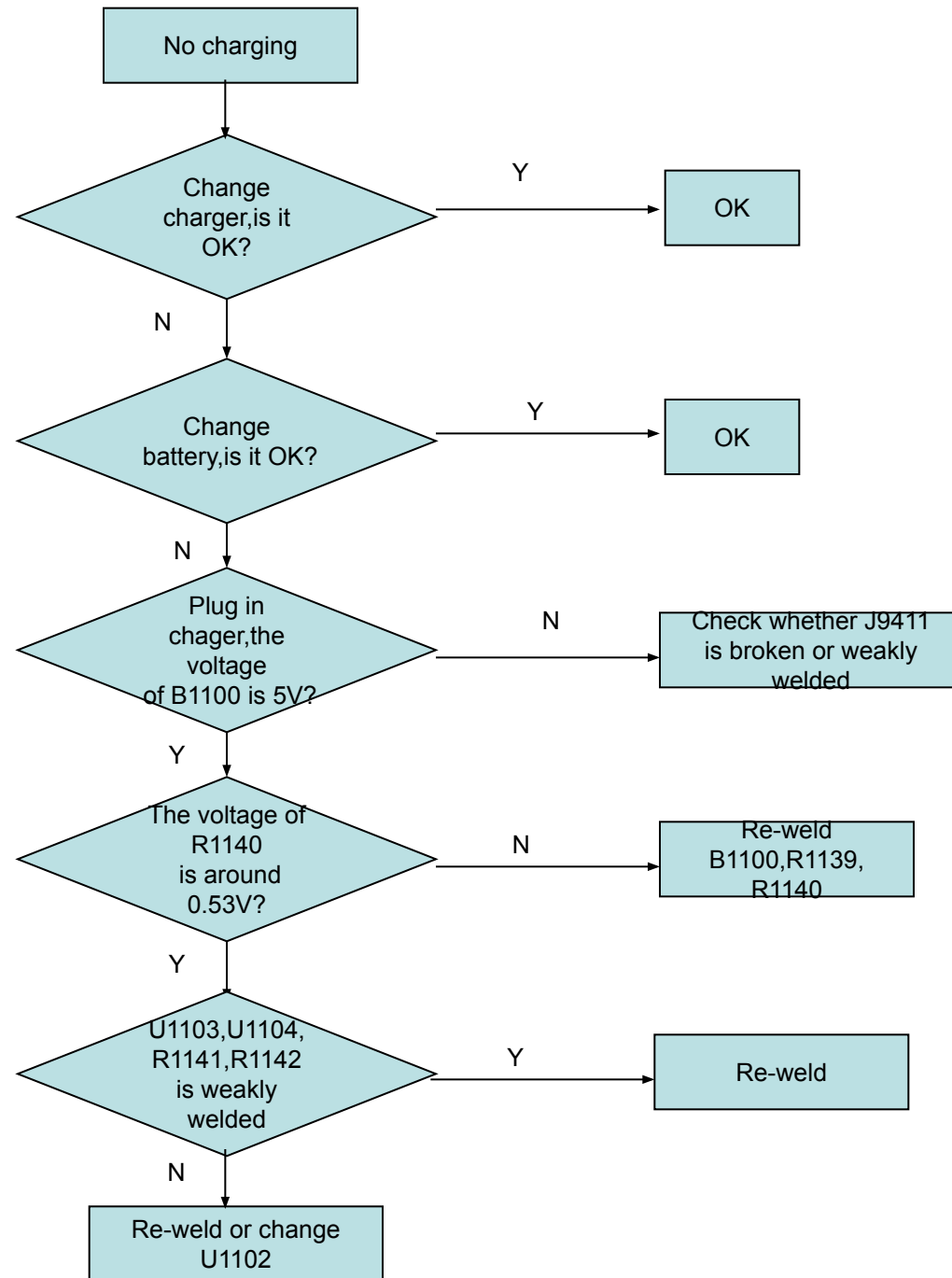
4.3.6 Earphone inefficacy



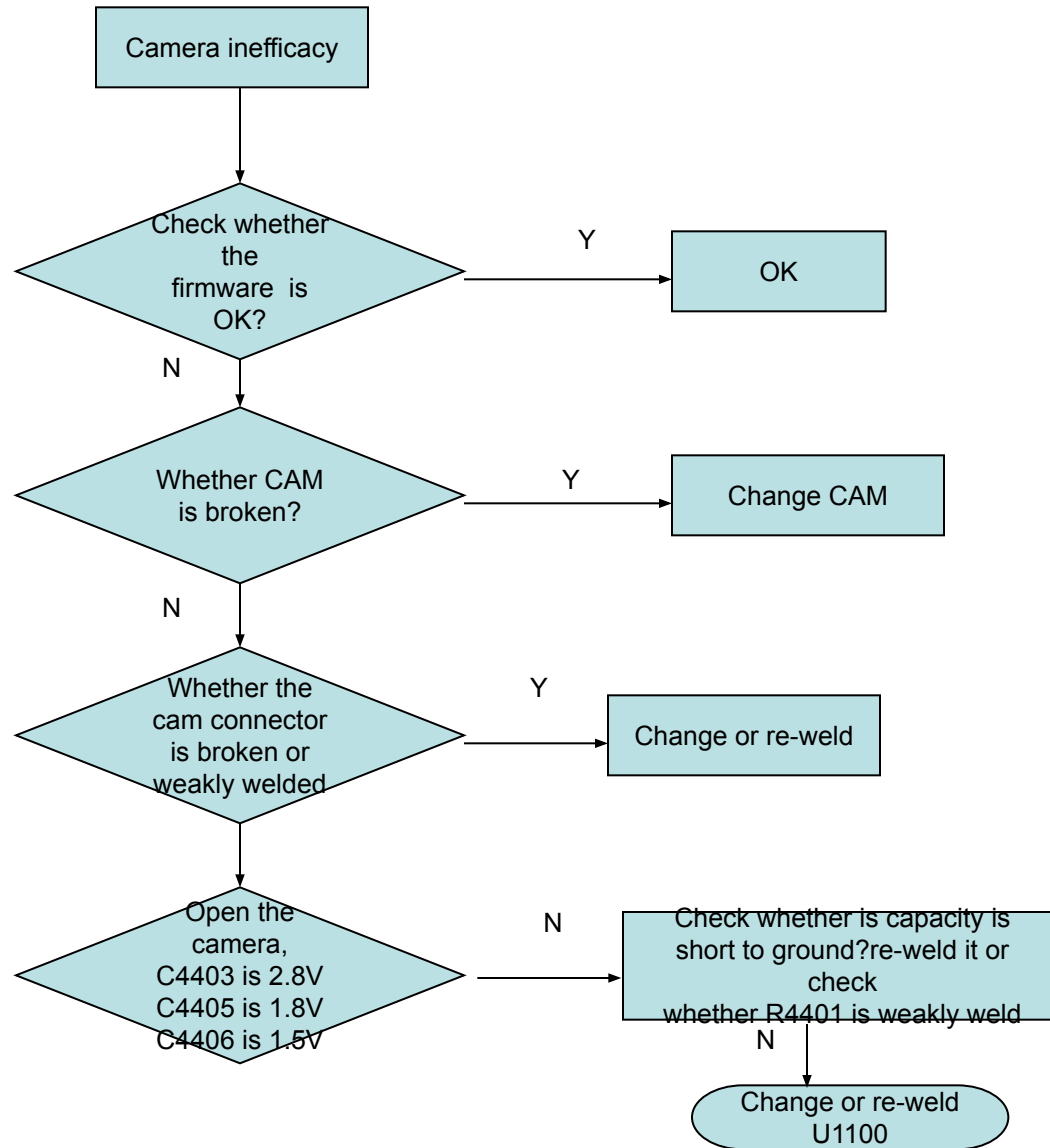
4.4 No vibrating

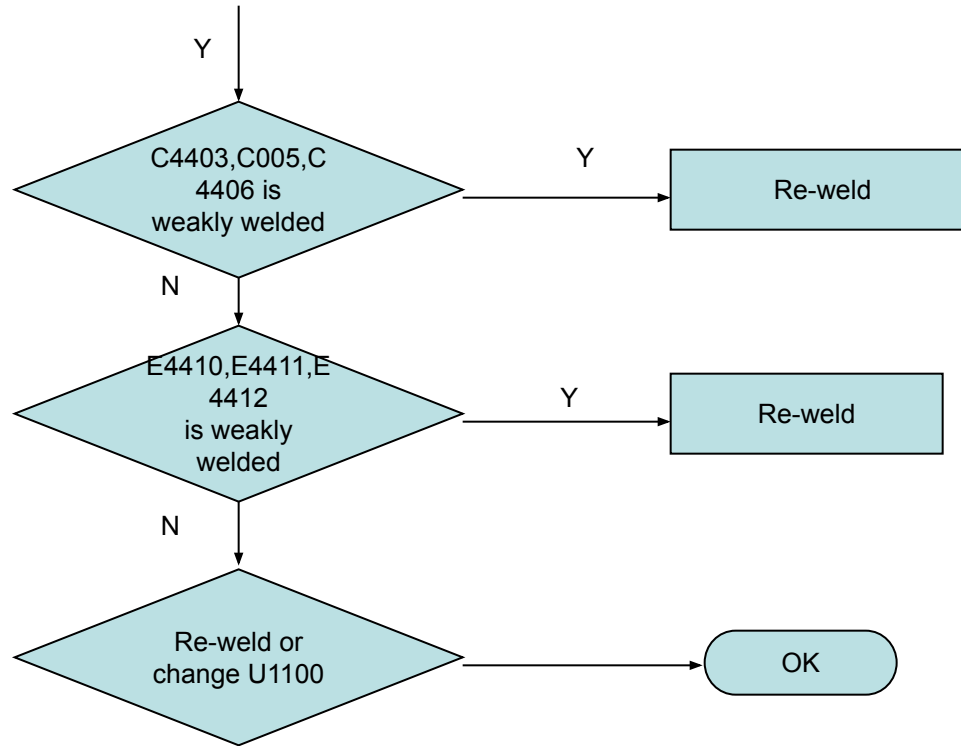


4.5 No charging

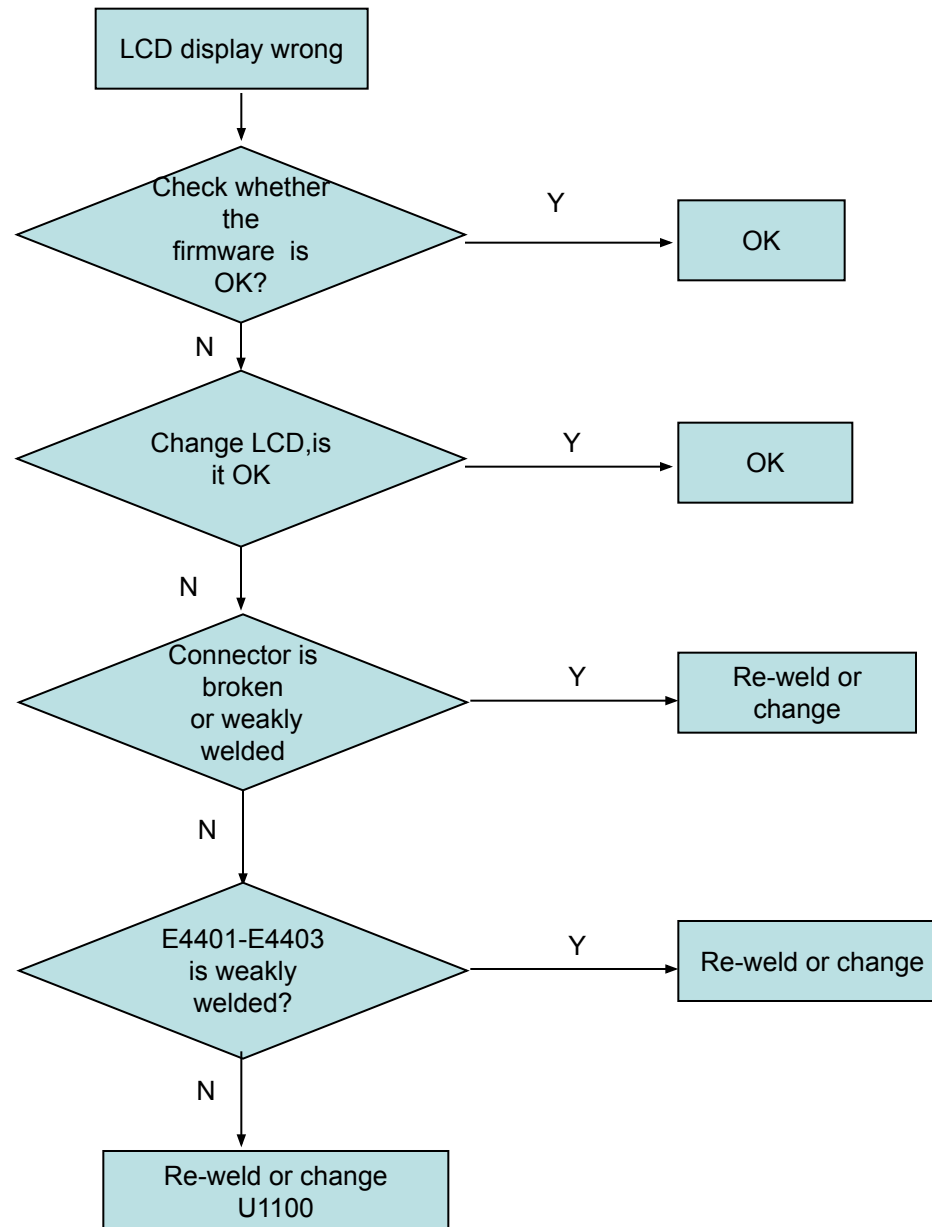


4.6 Camera inefficacy

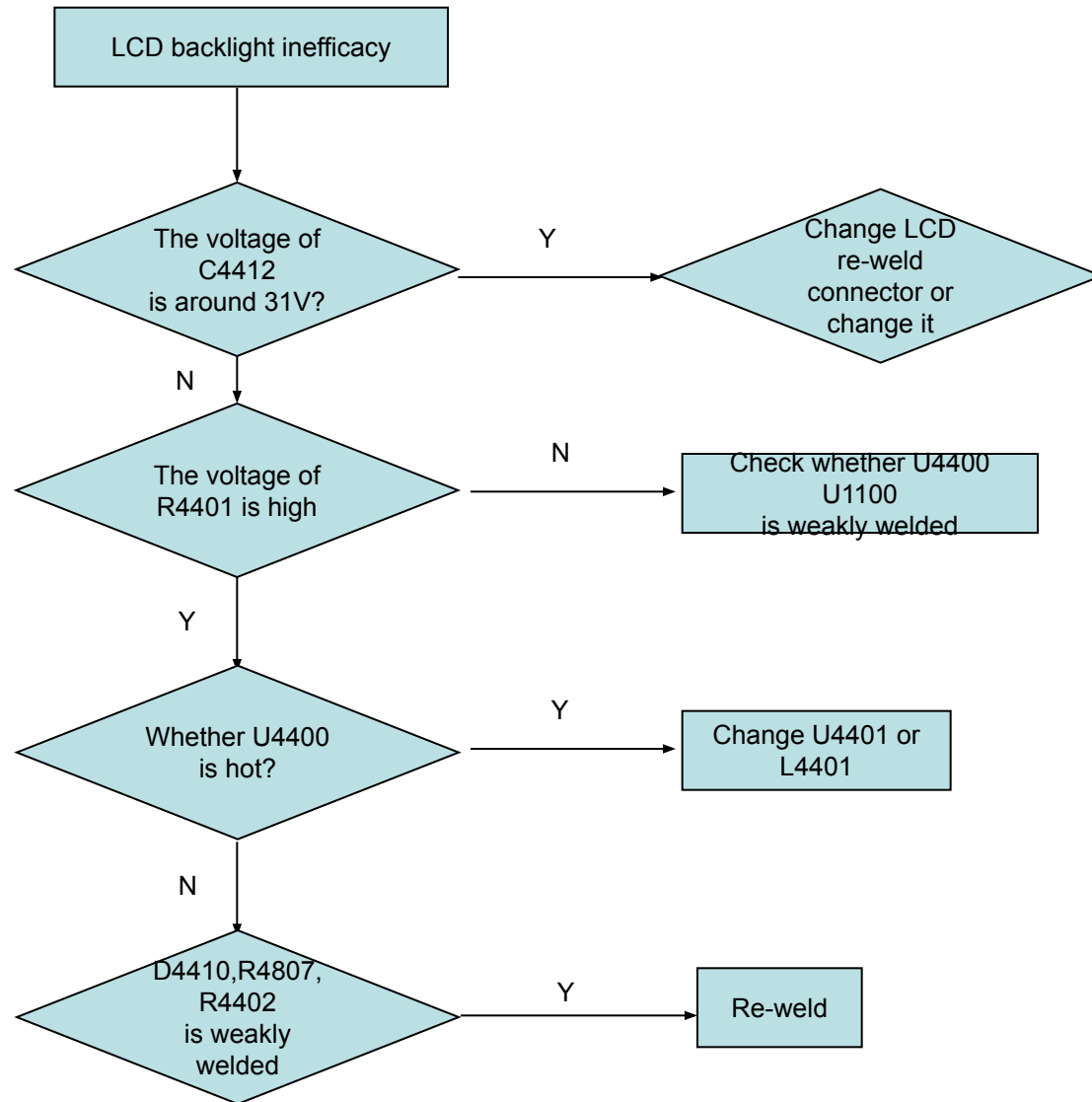




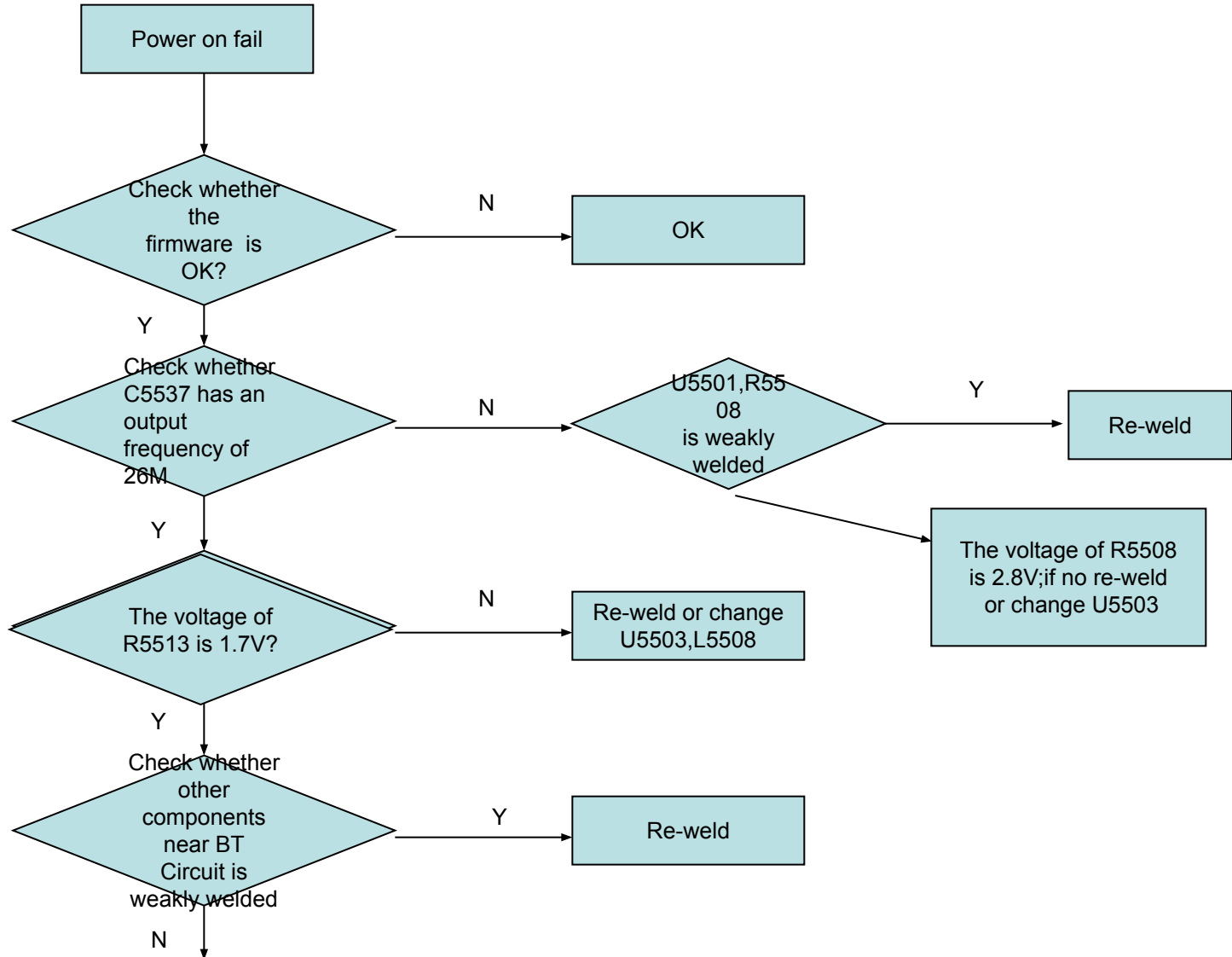
4.7.1 LCD display wrong

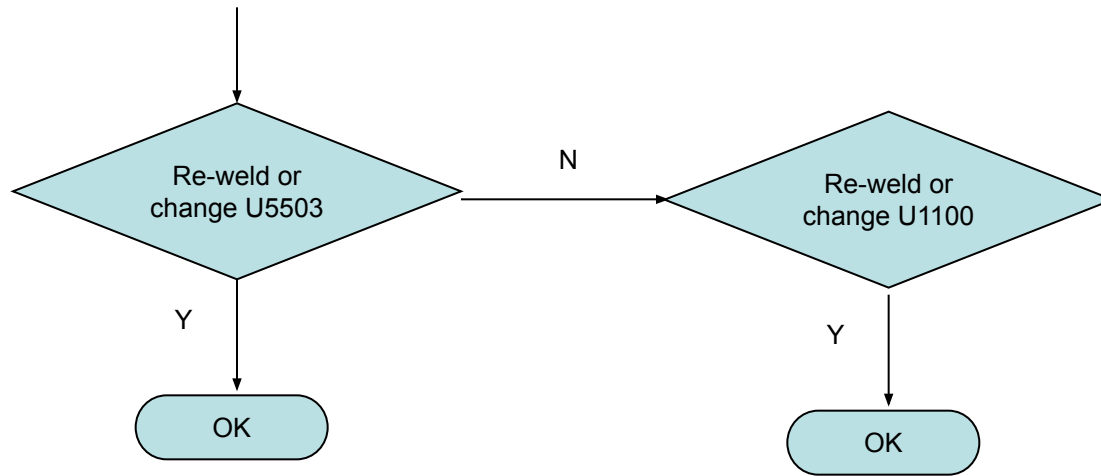


4.7.2 LCD backlight inefficacy

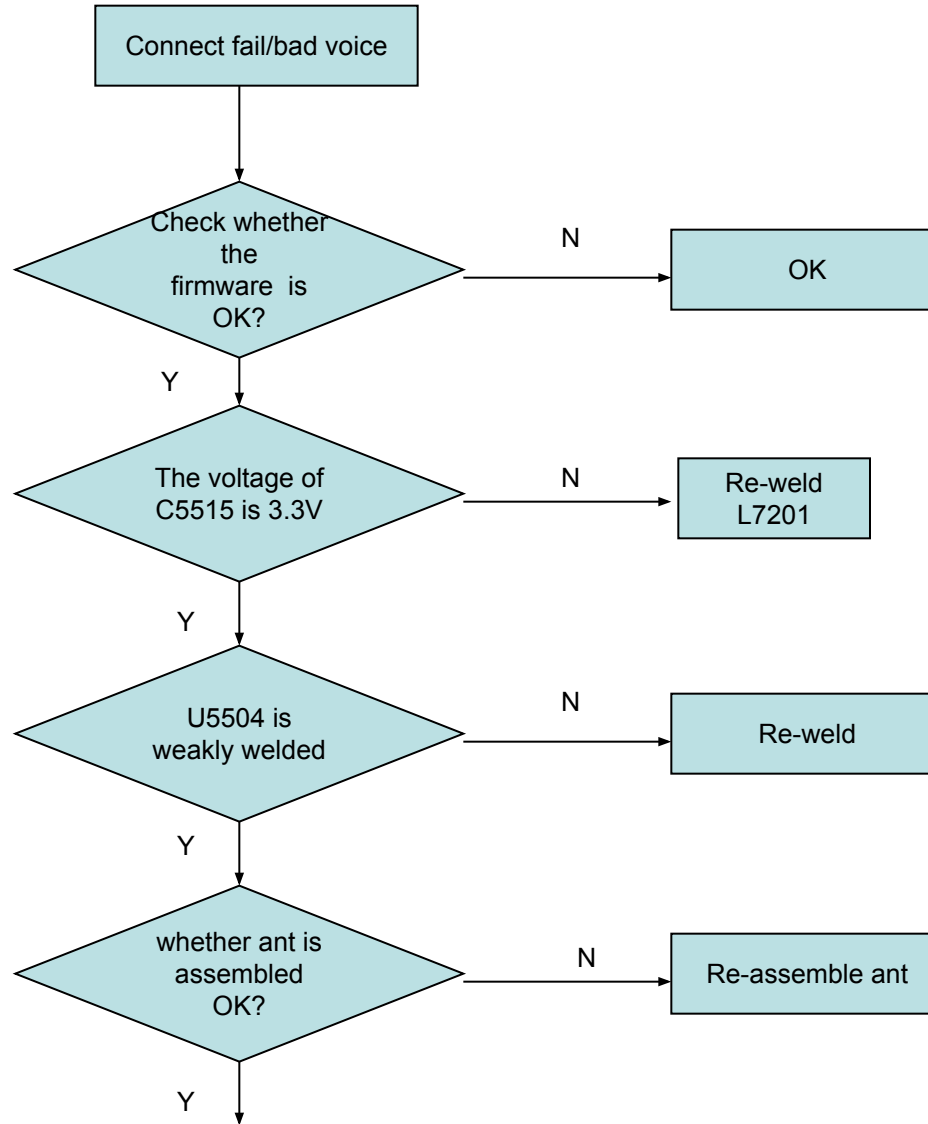


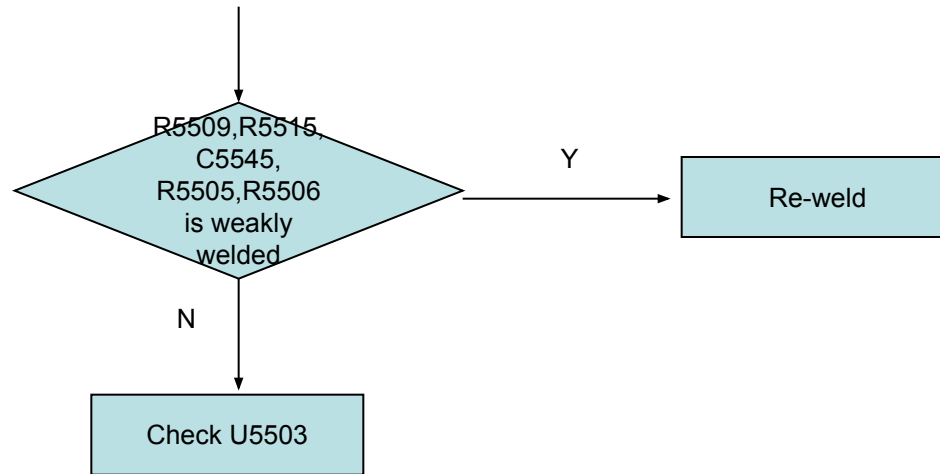
4.8.1 Power on fail



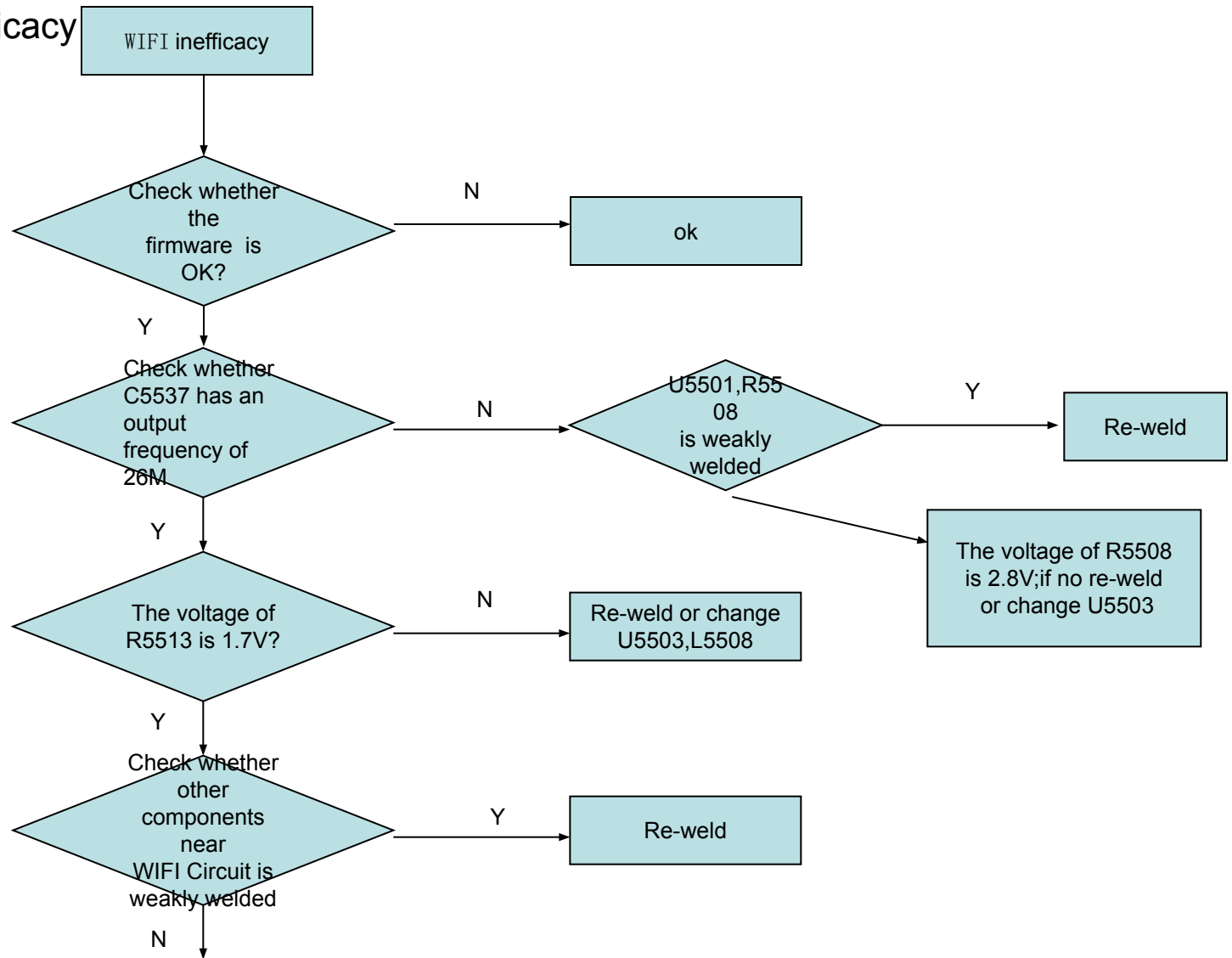


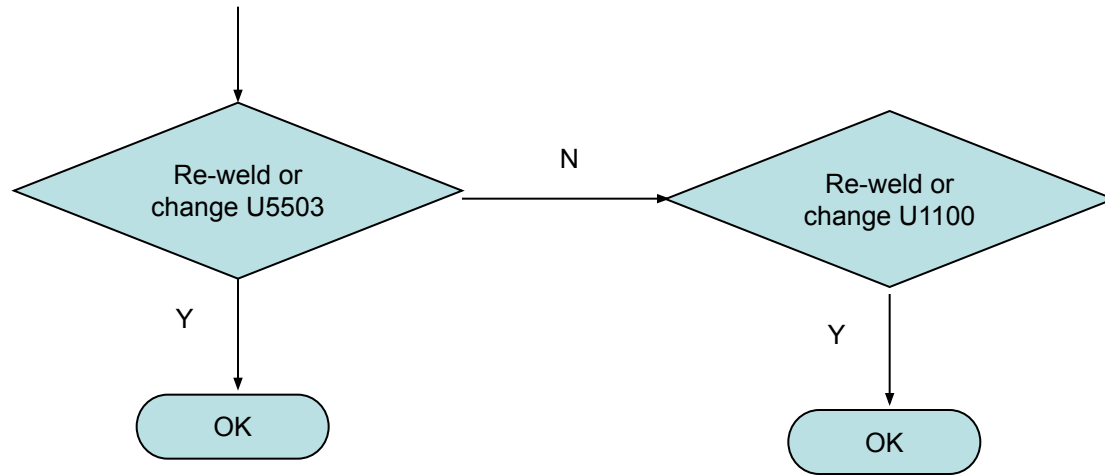
4.8.2 Connect fail/bad voice



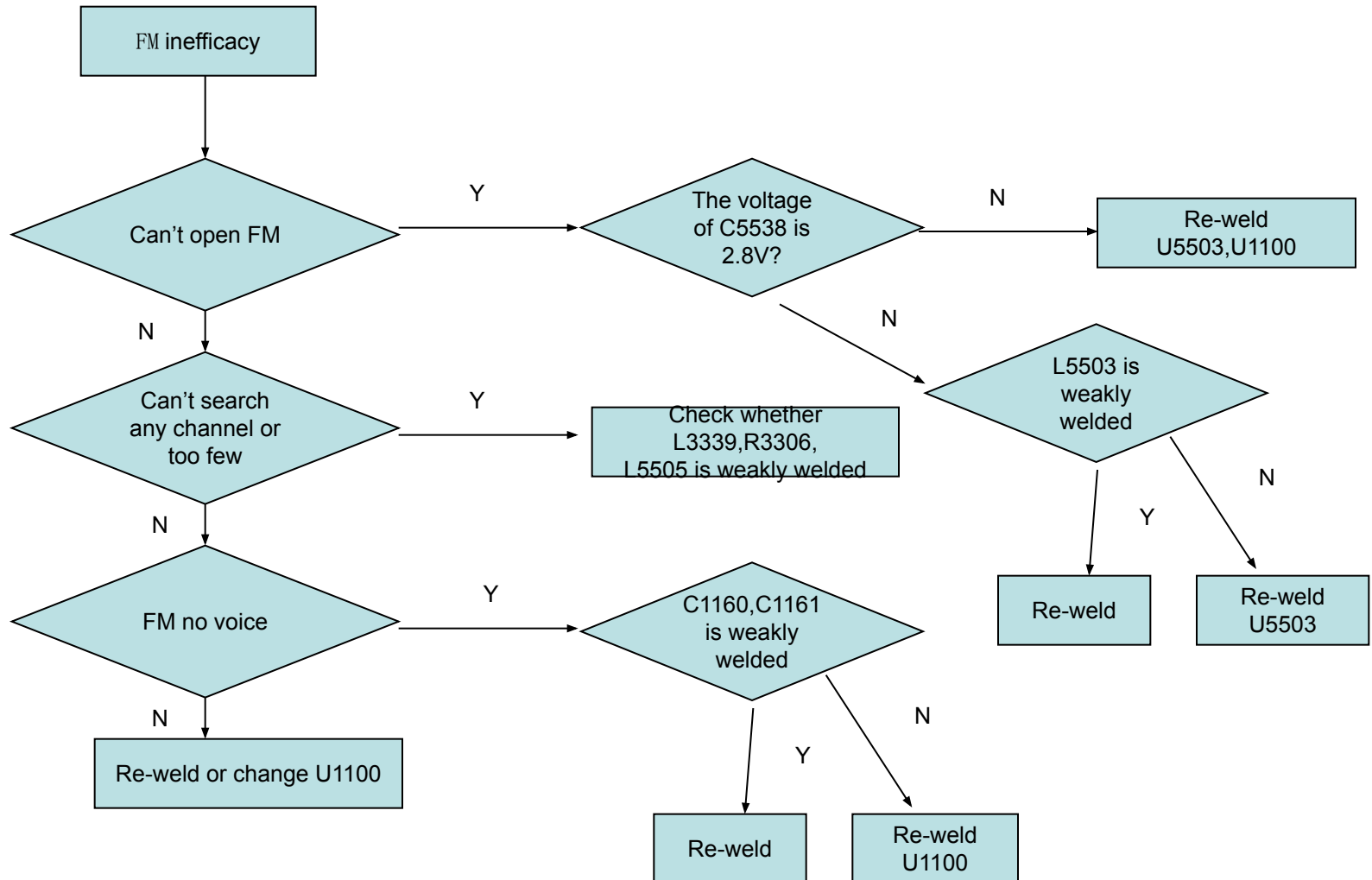


4.9 WIFI Inefficacy

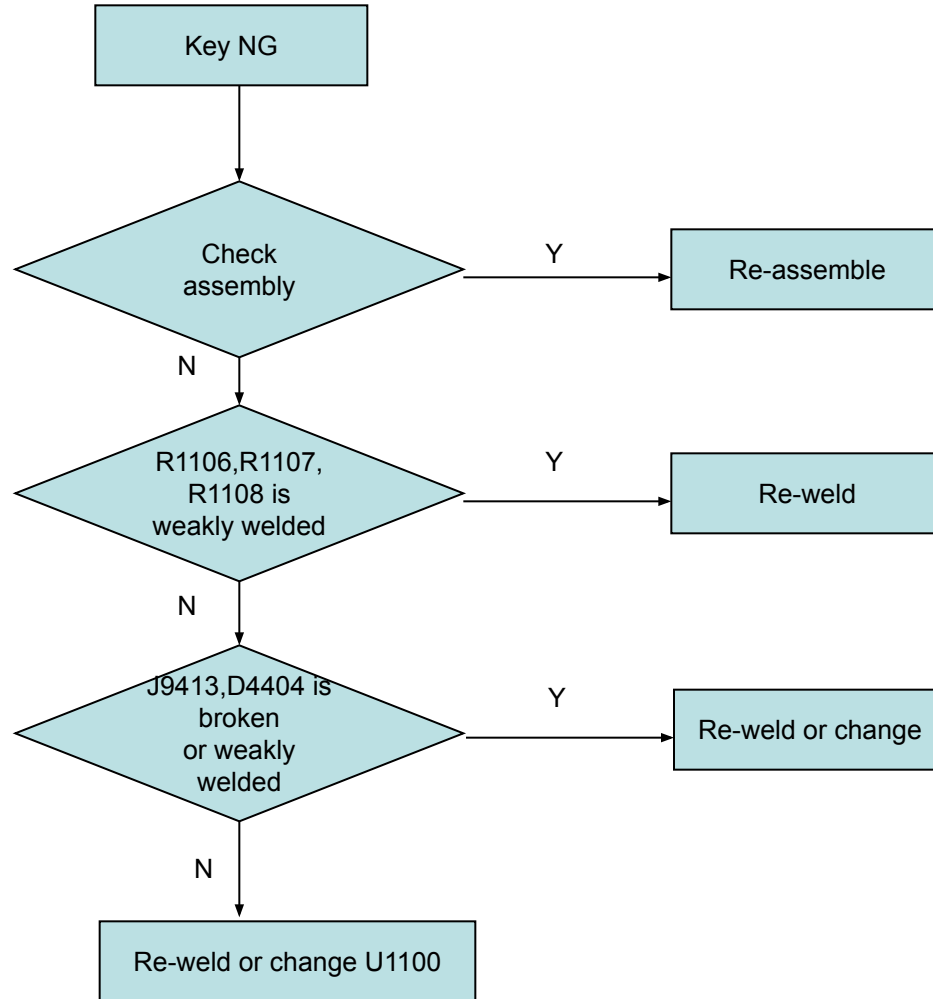




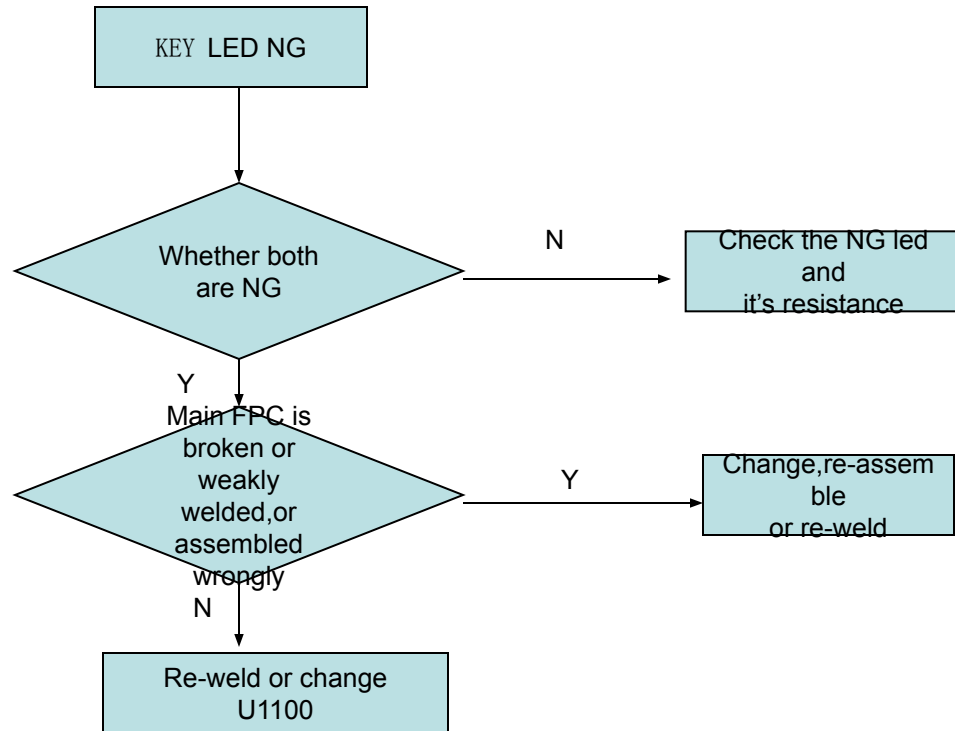
4.10 FM inefficacy



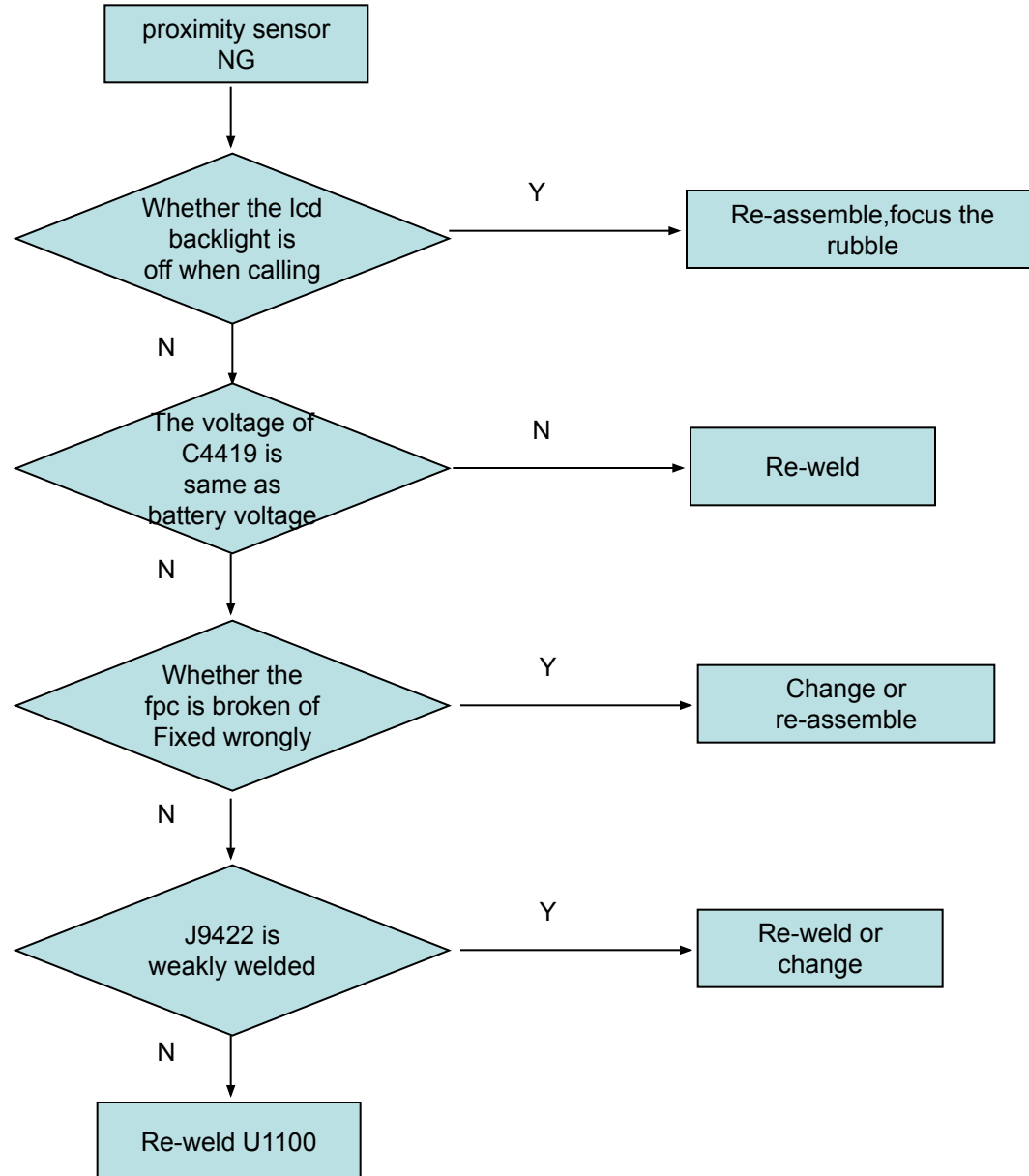
4.11 Key NG



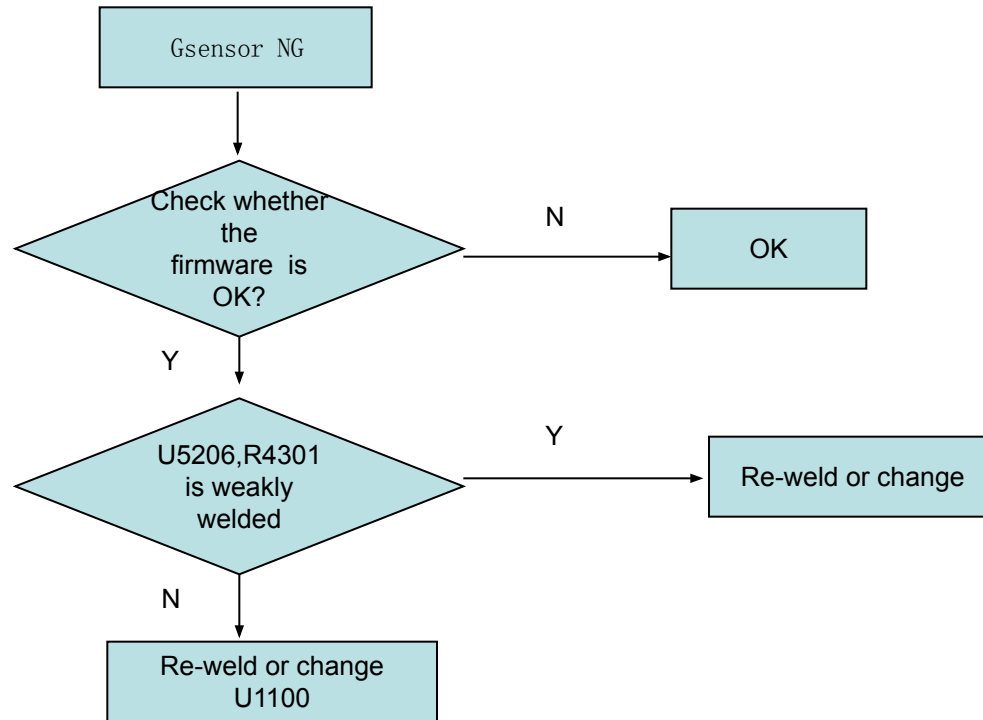
4.12 KEY LED NG



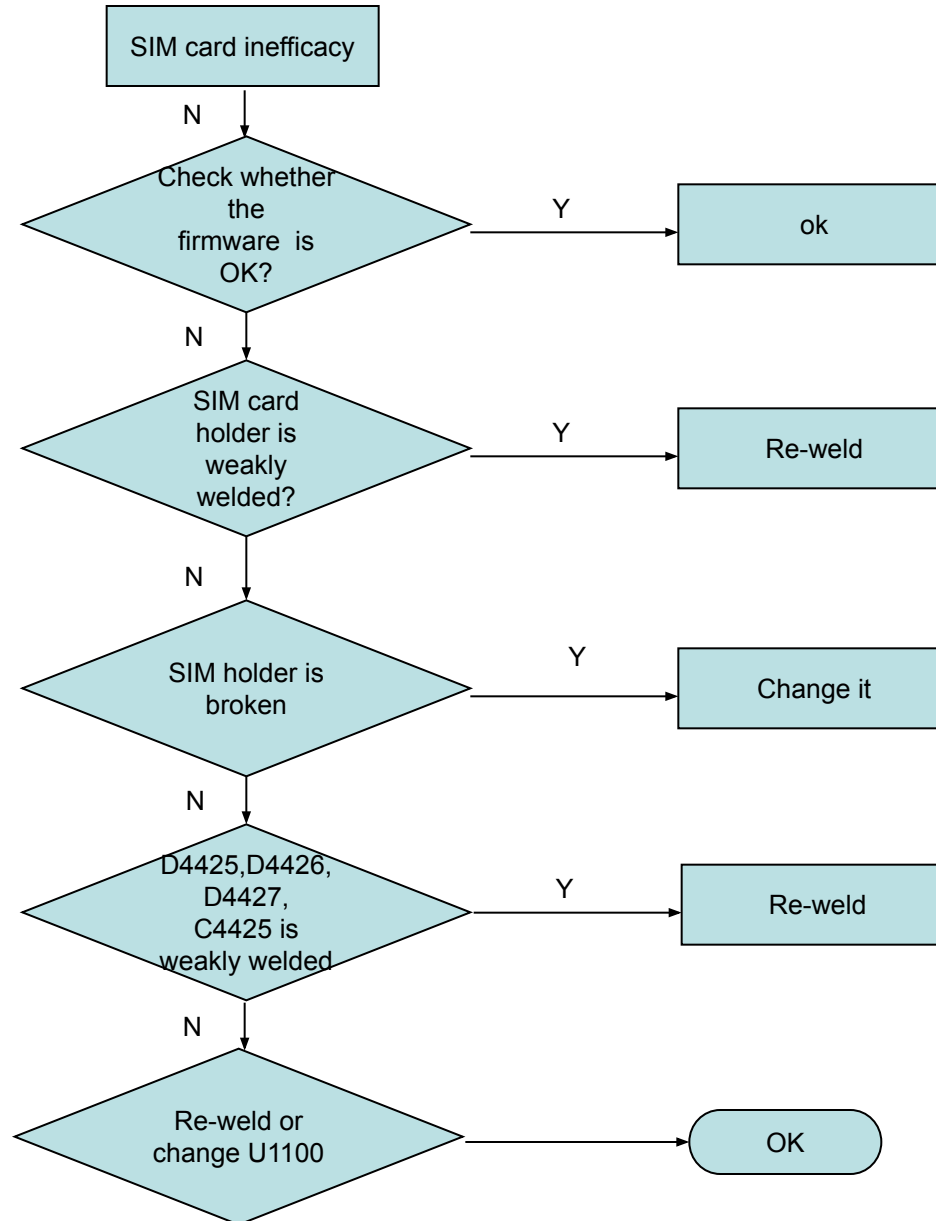
4.13.1 Proximity sensor NG



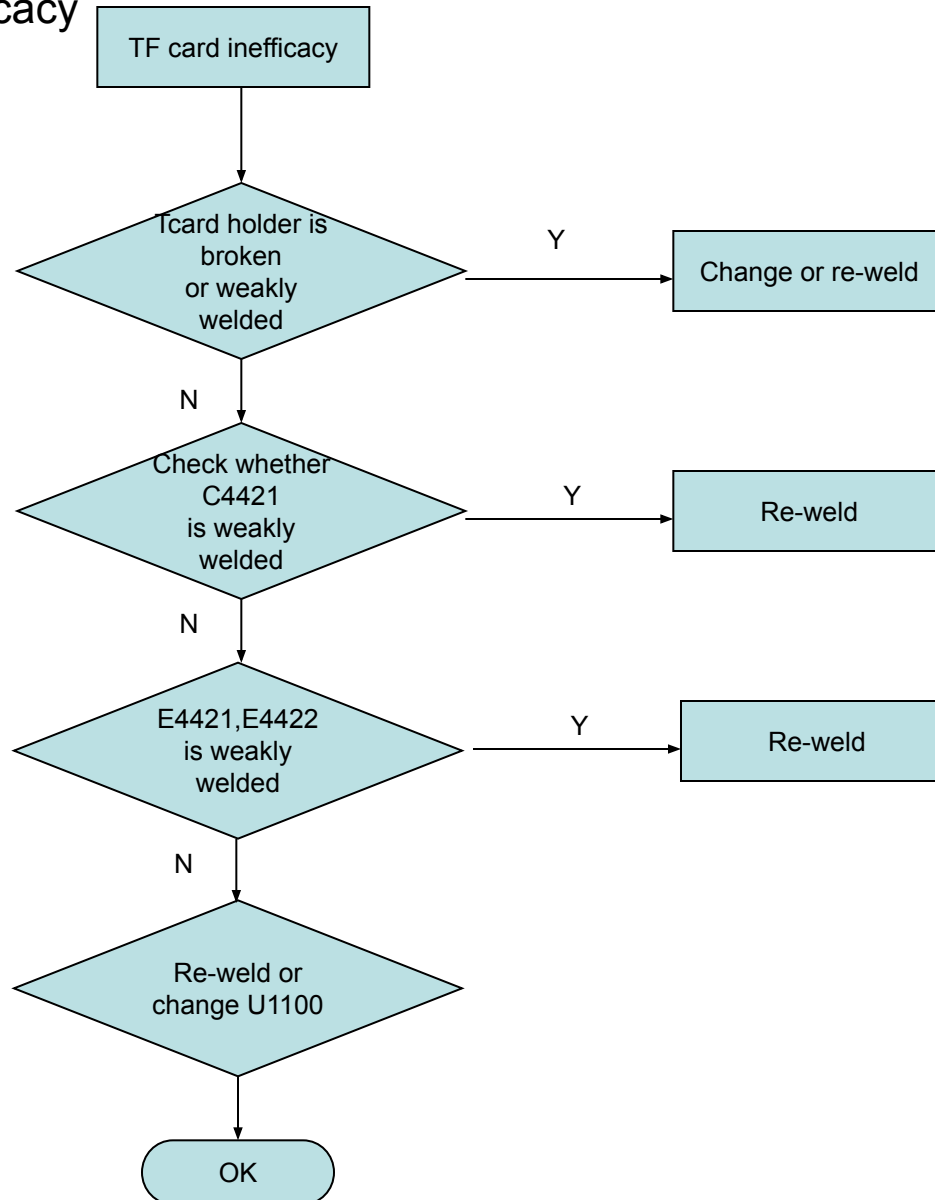
4.13.2 Gsensor NG



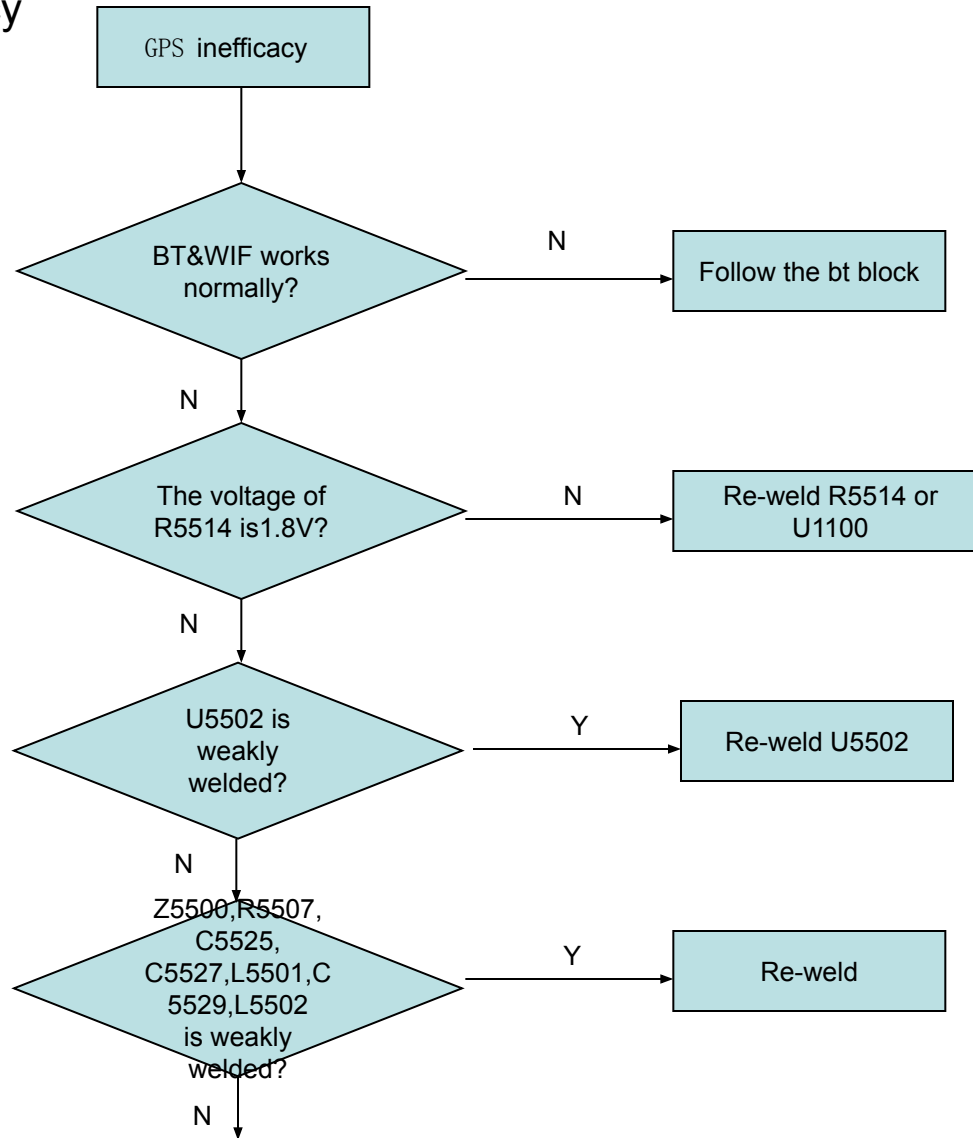
4.14 SIM card inefficacy



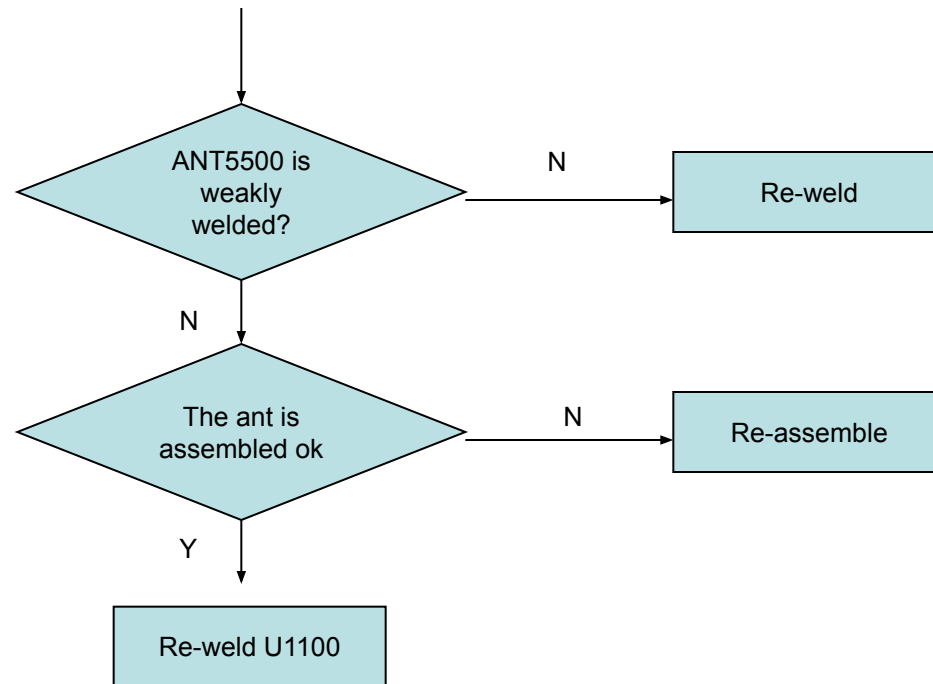
4.15 TF card inefficacy



4.16 GPS inefficacy



4.16 GPS inefficacy



4.17 TP inefficacy

