



# MAP OF LONDON

What do you  
know about  
**LONDON?**

If the flag is up,  
it means the Queen  
is home.

# What's this ?



# Buckingham Palace



# What's this ?



Beefeater (*guardians of the Tower*)

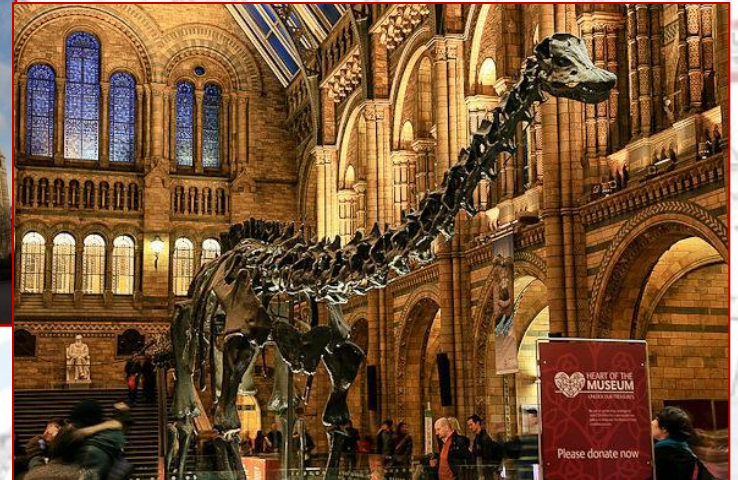
Ravens (*believed to protect the Crown*)

## The Tower of London

(built around 1066 by William the Conqueror)



What's this ?



The Natural History Museum



What's this ?



St Paul's  
Cathedral



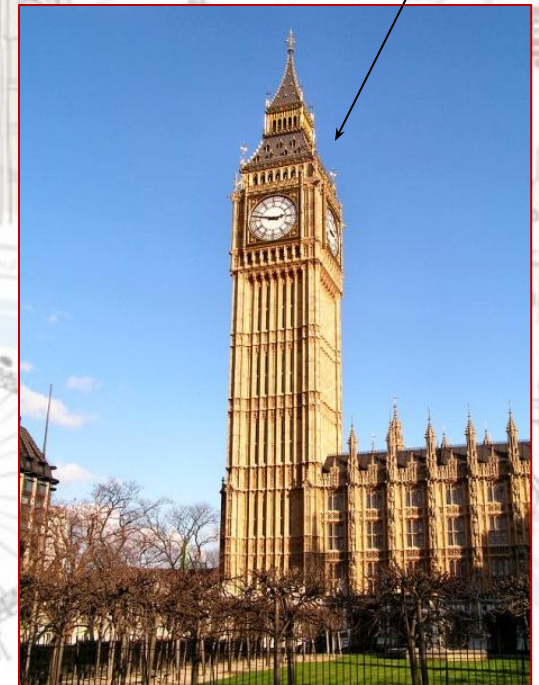
MAP OF  
LONDON

# What's this ?



The Houses of Parliament /  
The Palace of Westminster

## Big Ben





What's this ?



Madame Tussauds

# What's this ?

The National Portrait Gallery



## Trafalgar Square

Nelson's column

*(built to honor the naval victory of Admiral Nelson over the French in 1805)*





# What's this ?



# The British Museum

What's this ?

The London Eye





# What's this ?



## The Globe

*(built in 1599, destroyed by fire in 1613, rebuilt in 1614)*



What's this ?

Piccadilly Circus



MAP OF  
LONDON





What's this ?

10  
Downing  
Street



What's this ?



Tate Modern



What's this ?



Tower Bridge

What's this ?



Harrods

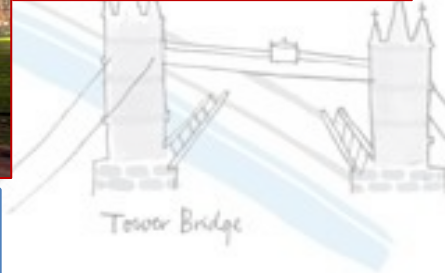


What's this ?



Westminster Abbey

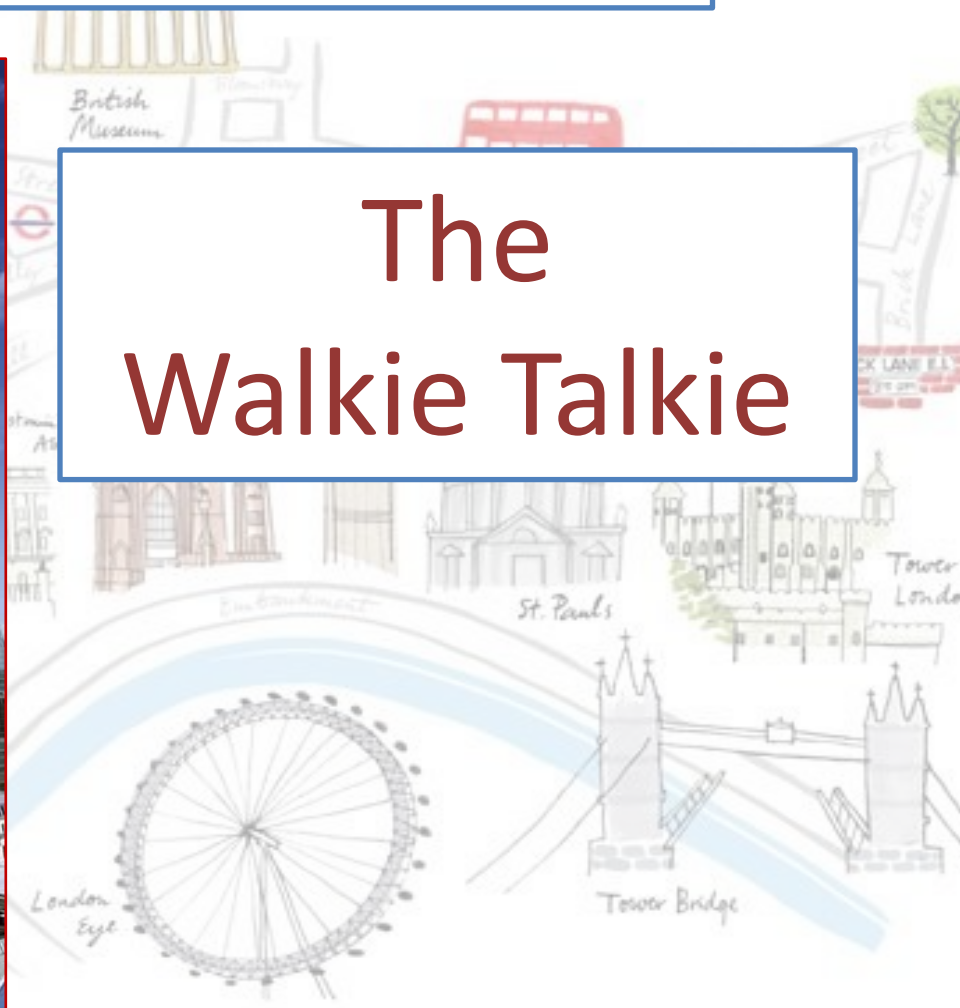
MAP OF  
LONDON



What are these ?  
3 incredible buildings !



The  
Walkie Talkie





What are these ?  
3 incredible buildings !



The  
Shard



What are these ?  
3 incredible buildings !



The  
Gherkin





KEEP  
CALM  
AND  
GO TO  
LONDON