

Презентейшн

Раша Федерейшн

Эд13.1

Черный Никита

Винт Ильмар

Russia

The Largest country in the world. The country is situated both in Europe and Asia. Its total area is over 17 mln. sq. km.

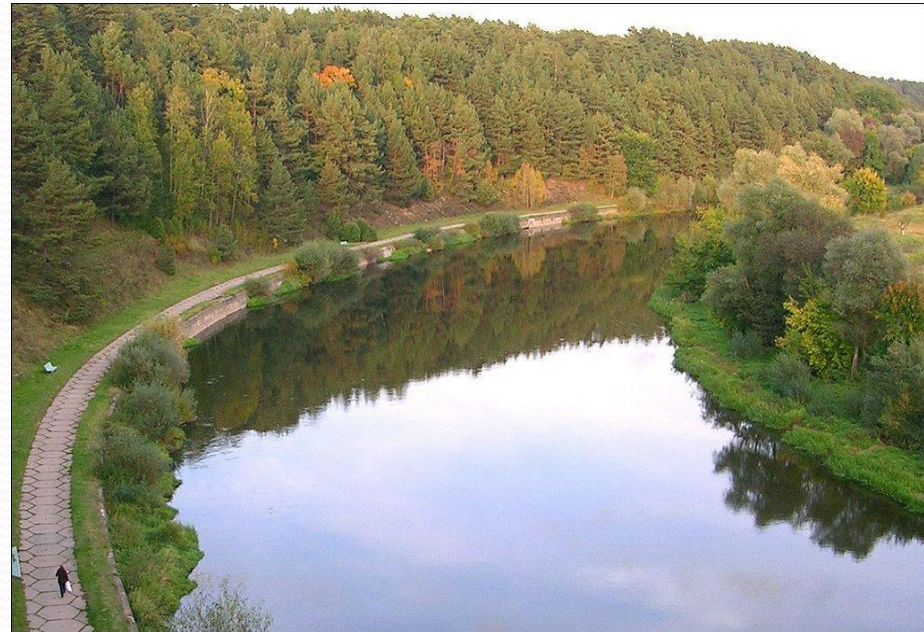
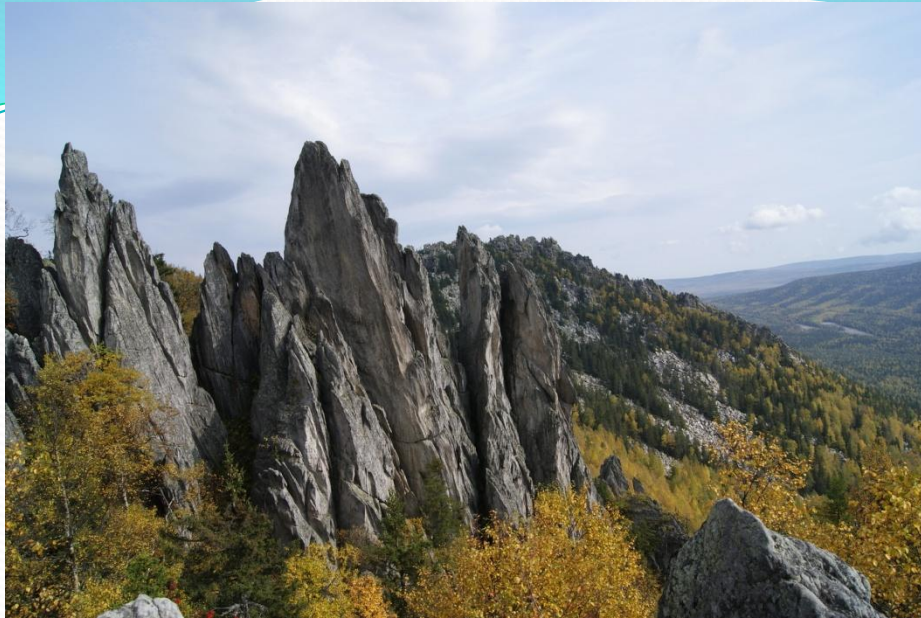
Our land is washed by 12 seas, most of which are the seas of 3 oceans: the Arctic, the Atlantic and the Pacific.

In the south and in the west the country borders on 14 states. It also has a sea-border with the USA.

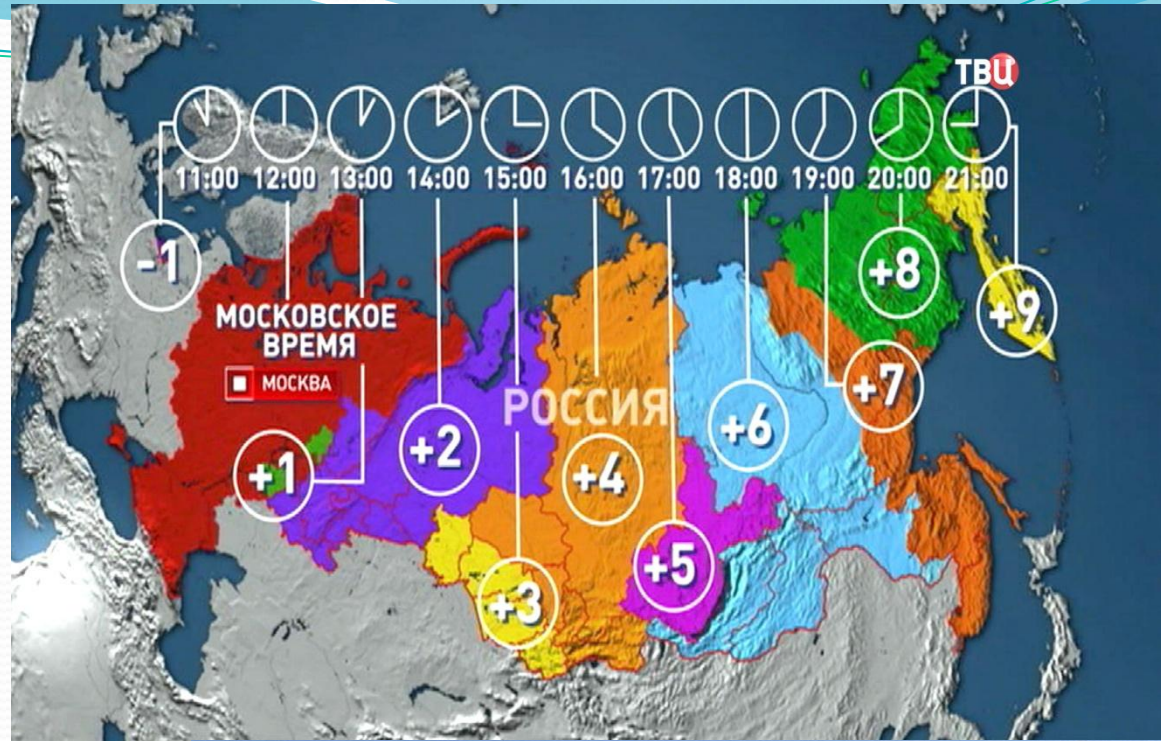


The country has a great **variety of flora and fauna.**

There are numerous forests, plains and steppes, taiga and tundra, highlands and deserts in our land. The highest mountains are the Altai, the Urals, and the Caucasus. There are over 2 mln rivers in the Russian Federation. The longest of them are the Volga, the Ob', the Yenisei, the Lena and the Amur. Our land is also rich in various lakes. Baikal is the deepest lake in the world.



On the Russian territory there are 11 time zones. The climate conditions are **rather different**: from arctic and mild — to continental and subtropical. Our country is one of the richest in natural resources countries in the world: oil, natural gas, coal, different ores of ferrous and non-ferrous metals and other minerals. It is one of the highly developed agro-industrial powers in the world. The main

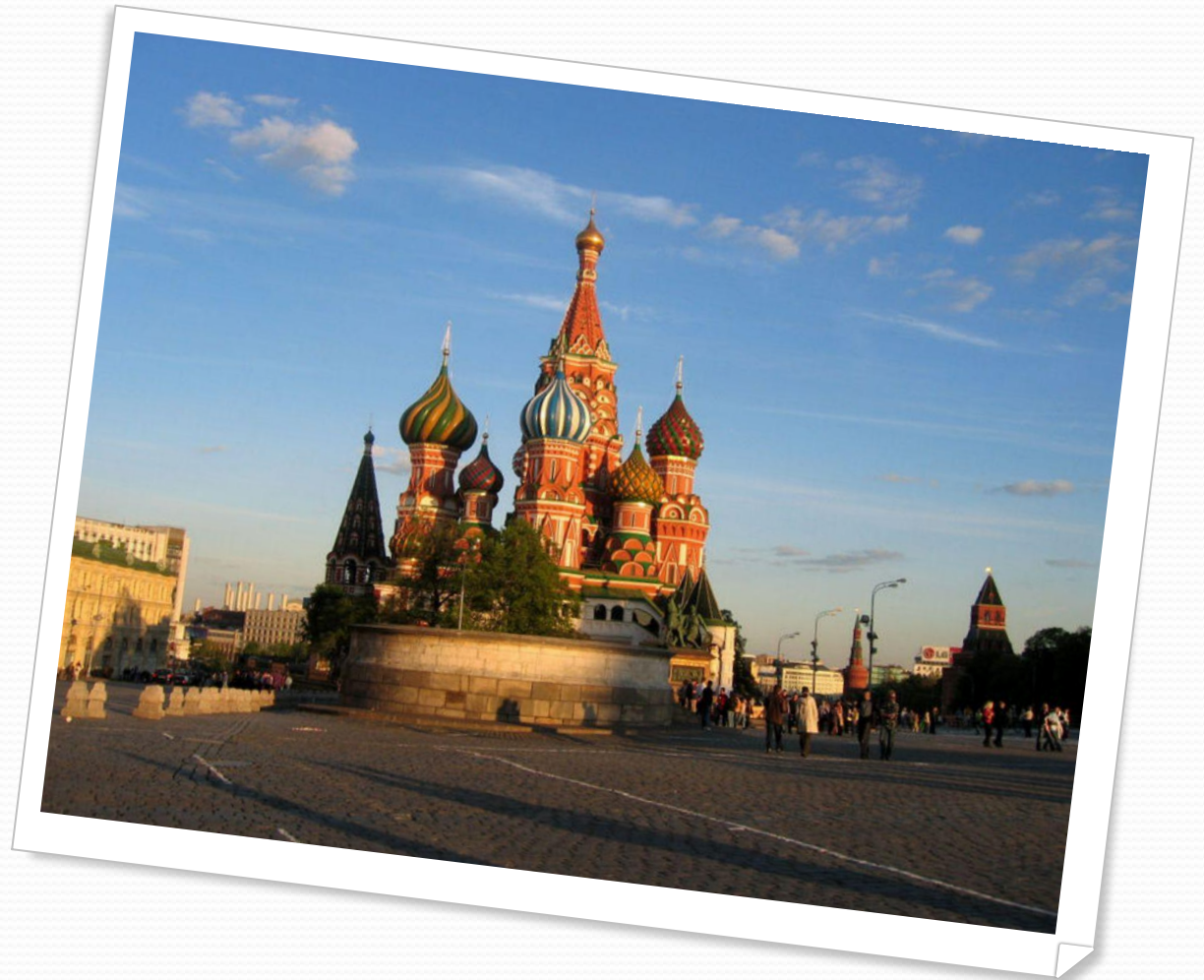


The Russian Federation is a multinational state. It comprises many national districts, several autonomous republics and regions. The population of the country is about 150 mln. More than 100 different nations and nationalities live in the Russian Federation.



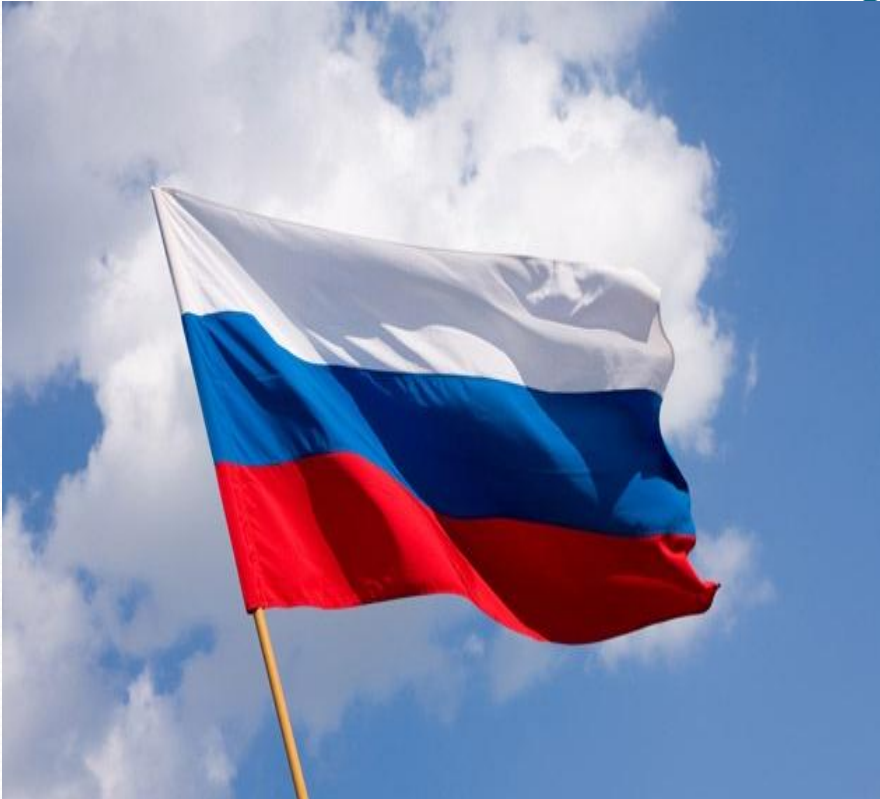
Moscow

Moscow is the capital of our Motherland. Its population is over 10 mln people. It is the largest political, scientific, cultural and industrial center of the country and one of the most beautiful cities.



Flag

Russian is the official language of the state. The national symbols of the Russian Federation are the state white-blue-red flag and 2-headed Eagle.



The Russian Federation is a constitutional state **headed by the President**. The country government consists of 3 *branches: legislative, executive and judicial*. The legislative power **belongs to the Council of Federation (upper chamber) and the State Duma (lower chamber)**. Each chamber is headed by the Speaker.



The executive power belongs to the Government (the Cabinet of Ministers) headed by the **Prime Minister**. The judicial power belongs to the system of Courts comprising the **Constitutional Court**, the **Supreme Court** and federal courts.



Our country has a **multiparty system.**

The **foreign policy of the Russian Federation** is that of **international cooperation, peace and friendship with all nations of the Globe** irrespective of their political and social systems.



The End Do you enjoyed? NO?

