



Playtika

Congratulations!

We've chosen to move forward with you in the application process for 2D artist position.

We'd like to get a chance to see how you work and think!
In the next slides you will see your home task.

The time for this task is limited **to one week**.

You're welcome to contact us if you have any questions!

TASK 1

Isometric house

Please draw a farmhouse in the center.



Of course feel free to be creative – we love good surprises 😊

For this task, please use the attached “test.png” file

Final export: PNG file

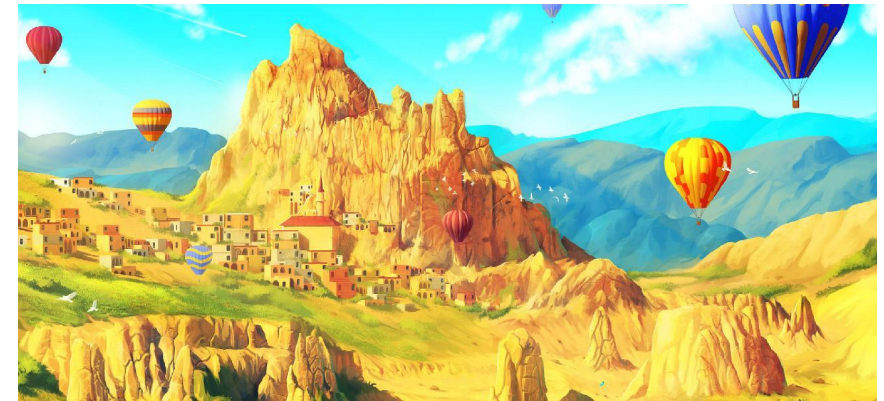
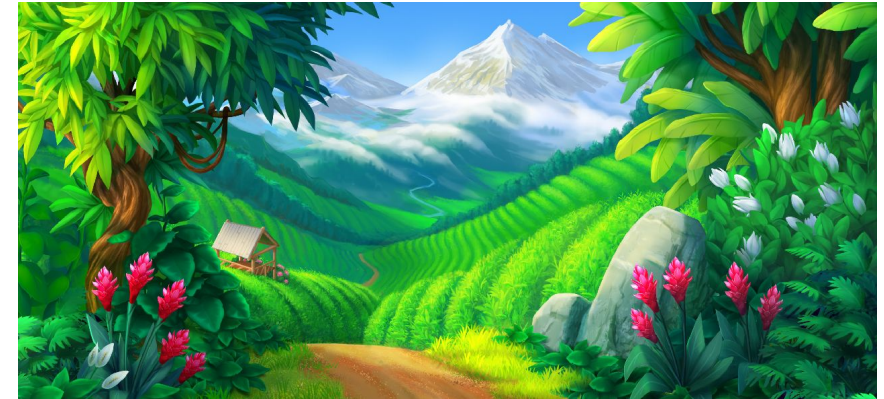
TASK 2

Game scene

As a continuation of the previous task..

When user enters a game scene, the first thing he'll see is a pastoral and inviting landscape.

Your task is to create jungle full-screen image, while preserving the same artistic style and attributes as the provided references.



Size: 1280px by 590px

Final export: PNG file

Feel free to add sketches of your work
or share parts of your process.

GOOD LUCK!