

Kazakh mythology

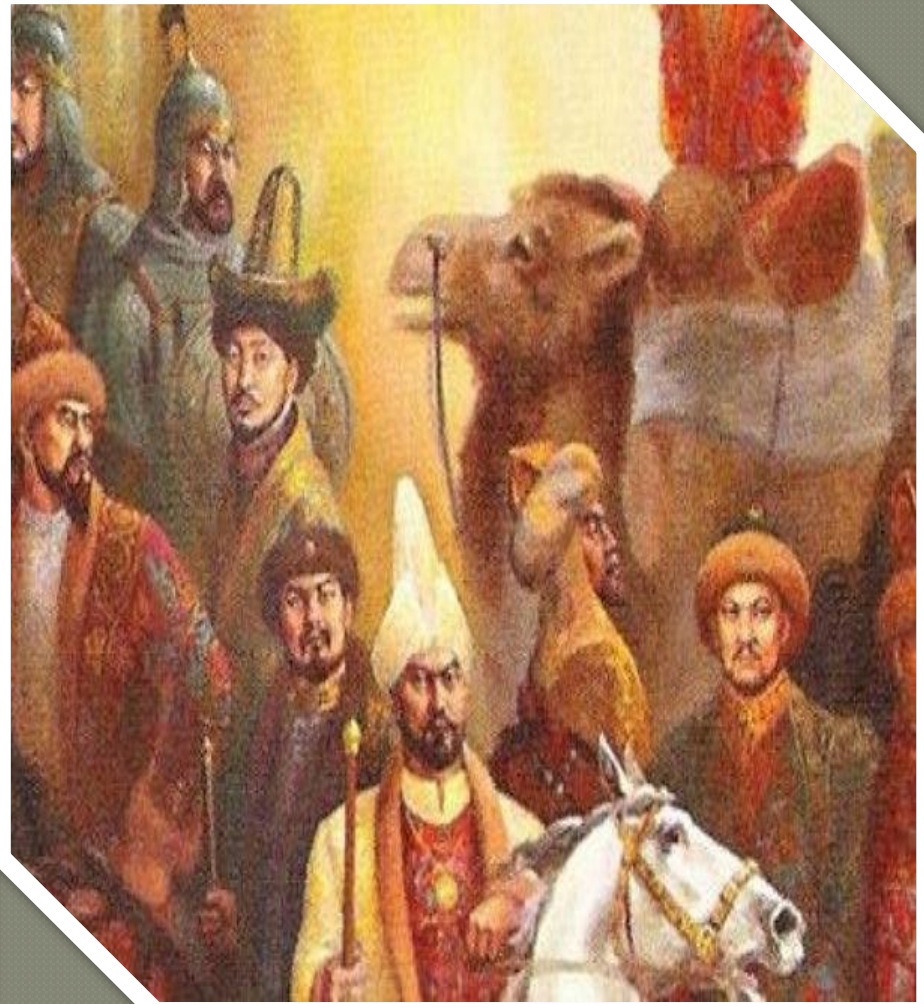
Kazakh mythology embraces Tengriism and Shamanism traditional as well as all cultural and social subjects being a nomad folk

- First - proto. Since the end of the Neolithic and Chalcolithic to 1-3 centuries BC
- The second - actually Turkish. C 1-3 centuries BC to 14-15 centuries BC
- The third - the actual Kazakh. After the 15th century to the present day.

Kazakh Scientists on mythology

- Serikbol Kondybai:
- *"We just tried to make a sketch of the great heritage ..."* - noted scholar in the manuscript of the "preface to Mythology"
- His discovery-mythological features of legendary ancestor of the Kazakh people Alash-Khan.
- Works: «Введение в казахскую мифологию», «Священные места Мангыстау и Устюрта» (2000), «Казахская степь и германские боги» (2000), «Есен-казак» (2002), «Гиперборея: родословная времени сновидений»

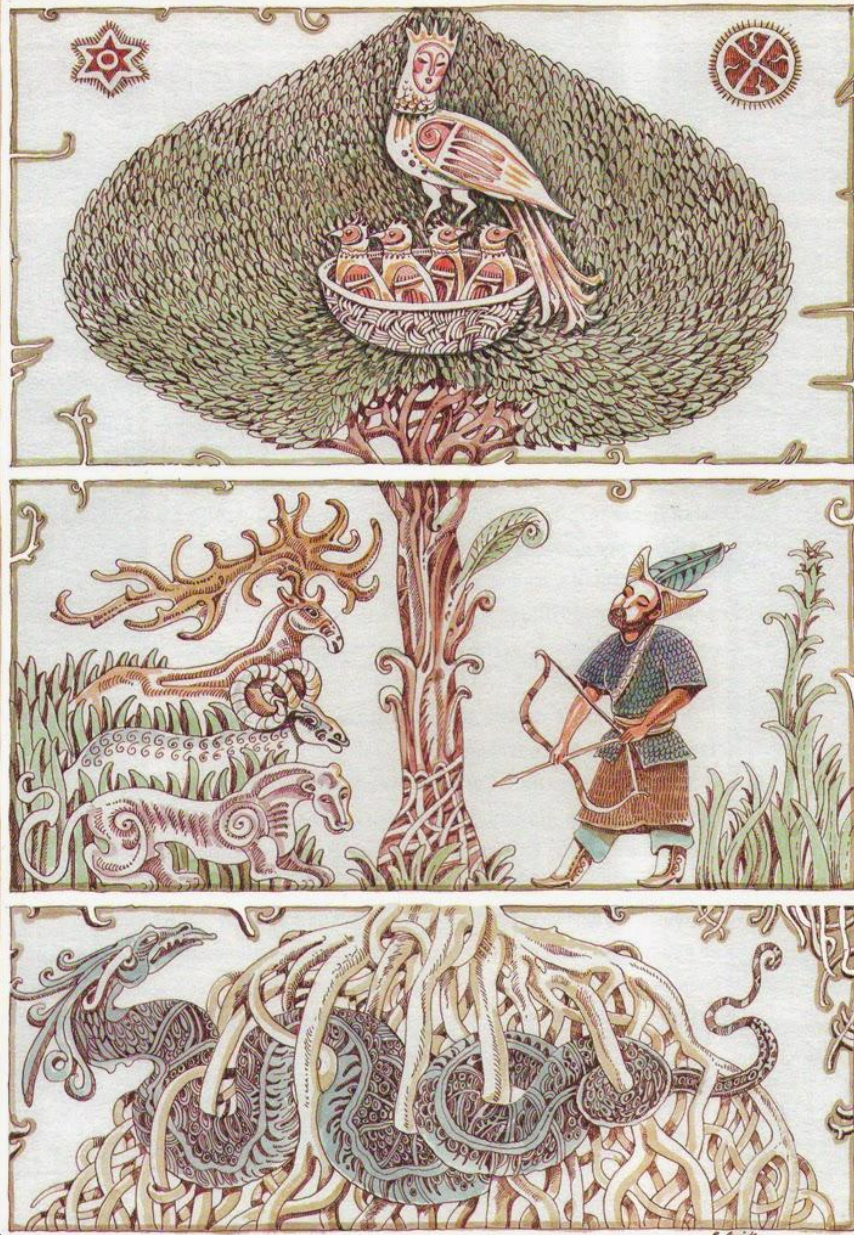
Tengri is one of the names for the primary chief deity in the religion of the early Turkic people.





Baiterek

The legend of the World Tree



the World Tree connects the
three levels of spiritual
existence,
heaven,
earth
the underworld, or upper middle
and lower existences
respectively.

