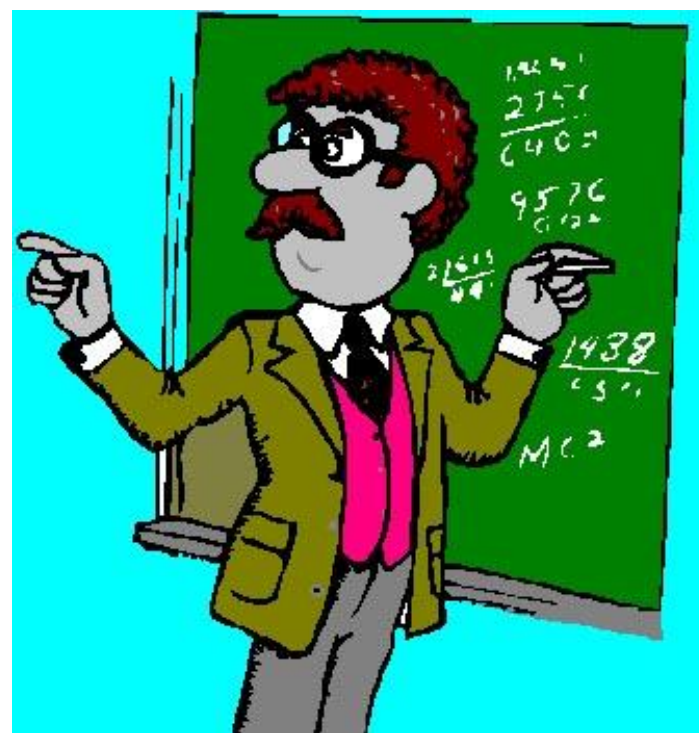


Places Around Town





school



bank

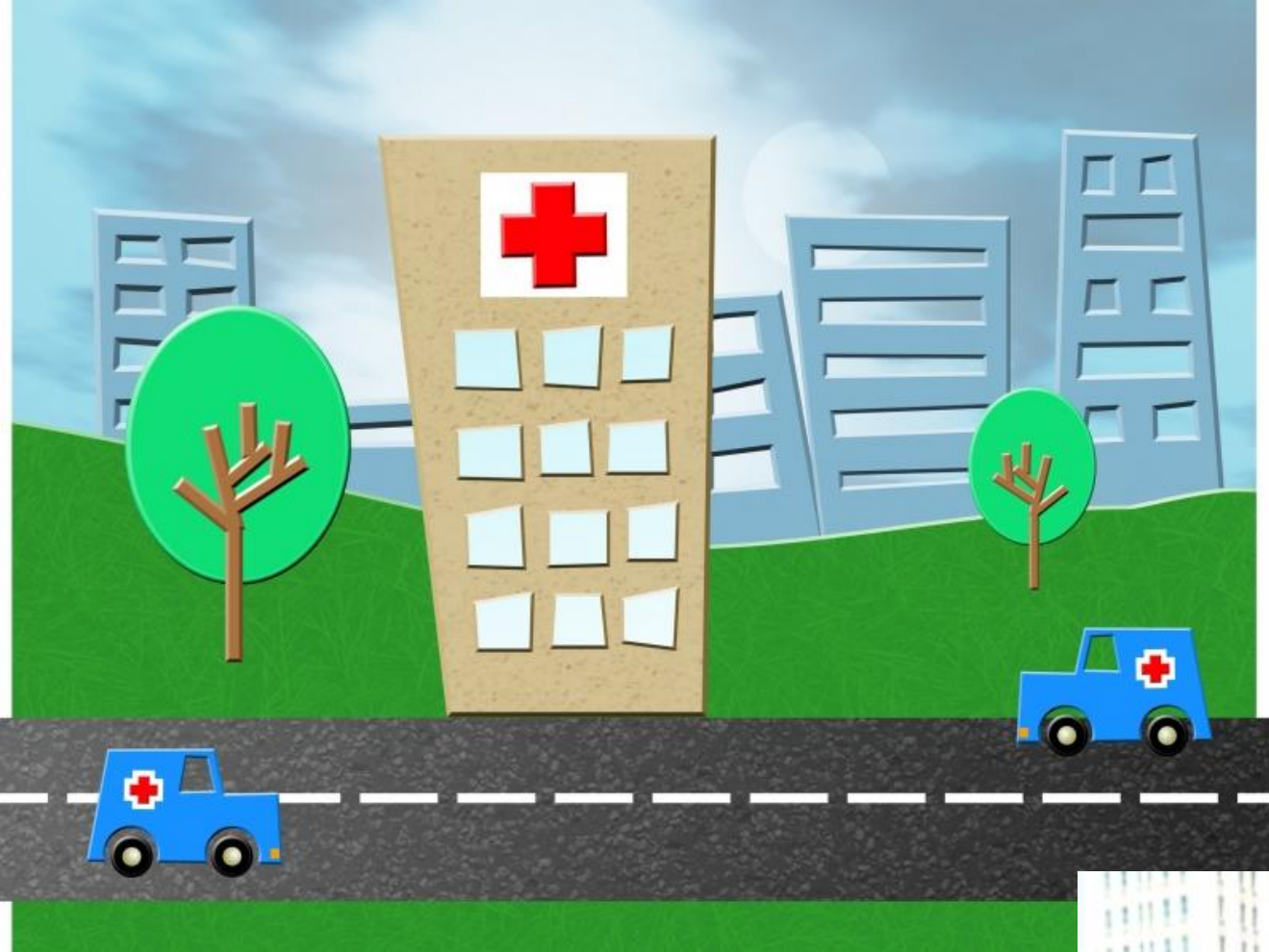


church



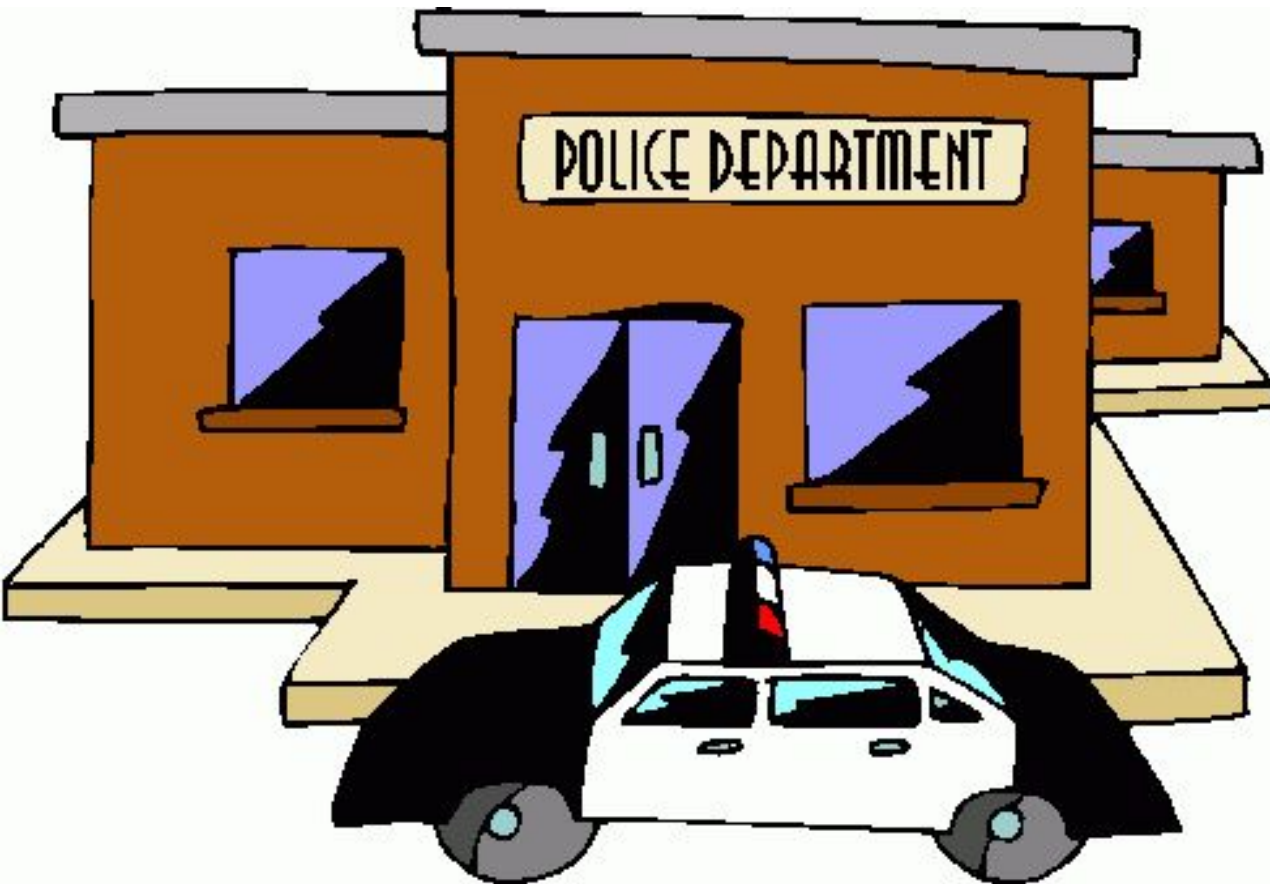
cinema





hospital





Police station



library



Post office





restaurant



www.shutterstock.com · 3555560



shop
(clothes shop)



station
(train station)

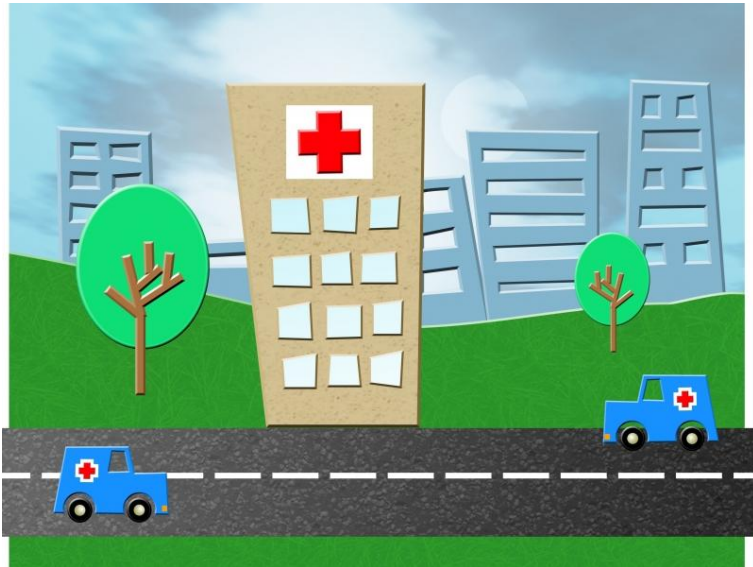
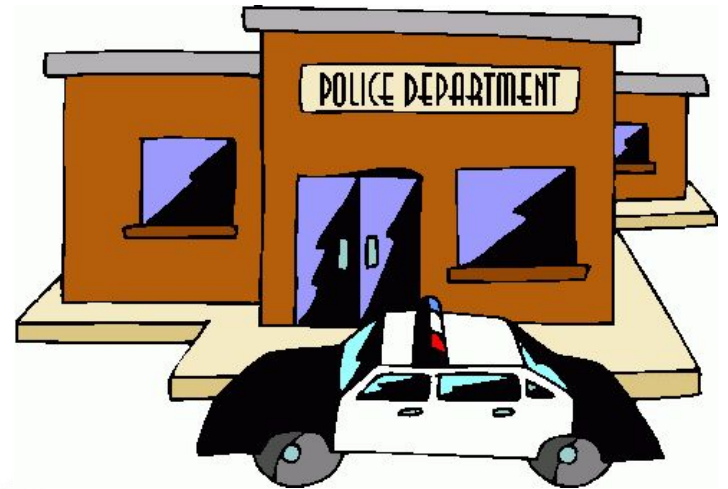


supermarket



www.shutterstock.com · 3555560







A blue speech bubble with a tail pointing towards the bottom left.

What is there in your town?

A blue speech bubble with a tail pointing towards the bottom right.

In my town there's a.....