



Will you be my Valentine?



BY HERBER

Valentine's Day

Customs and Symbols



February 14th



People around the
world celebrate
Valentine's Day on
February 14th.



Valentine's Day Card



Children write Valentine cards to their friends.

A Valentine card usually has a poem and this question:

Will you be my Valentine?



Valentine's poems

I Love You So Well
I love you,
I love you,
I love you so well.
If I had a peanut
I'd give you the shell.

Roses Are Red
Roses are red,
Violets are blue,
Sugar is sweet,
And so are you!



Valentine's poems

To My Valentine

If apples were pears
And peaches were plums,
And the rose had a different name,
If tigers were bears
and fingers were thumbs,
I'd love you just the same.

I love coffee,
I love tea,
I love you,
Do you love me?



Valentine's poems

Bee My Valentine

Won't you bee my valentine
And fly away with me?
We'll bumble along together
'Cause you're my Honey bee!



Roses are red,
Violets are blue.
I made this card
Just for you!

I think you're nice,
I think you're cool.
If you won't be my Valentine,
I'll think you're a fool!



Chocolate candy

Many people love
chocolate candy.
They are popular
on Valentine's
Day.



Gifts and cards

There is someone
who will be grateful
and happy to receive
a Valentine's Day
gift and a card from
you.



Flowers

Thank you!



This boy is going
to give a bouquet
of flowers to his
friend.



Cupid's arrows

**This is Cupid.
If he strikes you with
one of his arrows,
you will fall in love
with the first person
you see.**



Valentine's Day

Vocabulary



Valentine's Day vocabulary

1 / 9



Cupid



Valentine's Day vocabulary

2 / 9

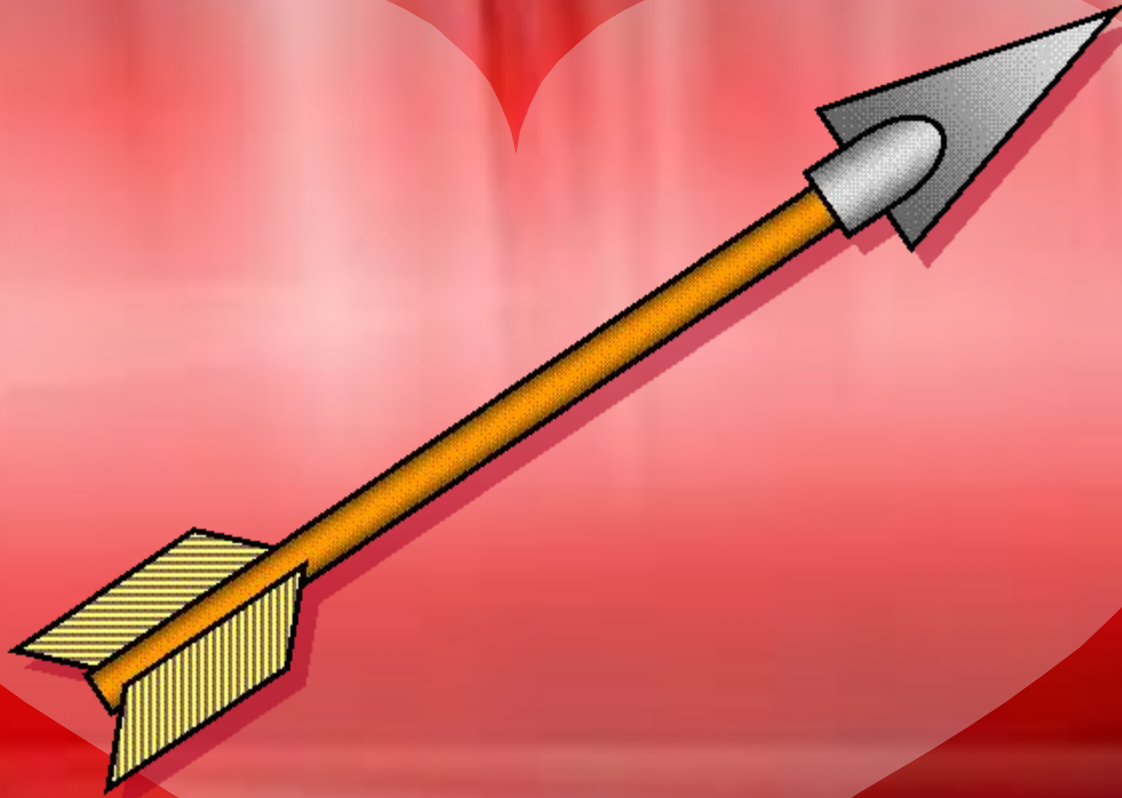


heart



Valentine's Day vocabulary

3 / 9



arrow



Valentine's Day vocabulary

4 / 9



couple



Valentine's Day vocabulary

5 / 9



card



Valentine's Day vocabulary

6 / 9

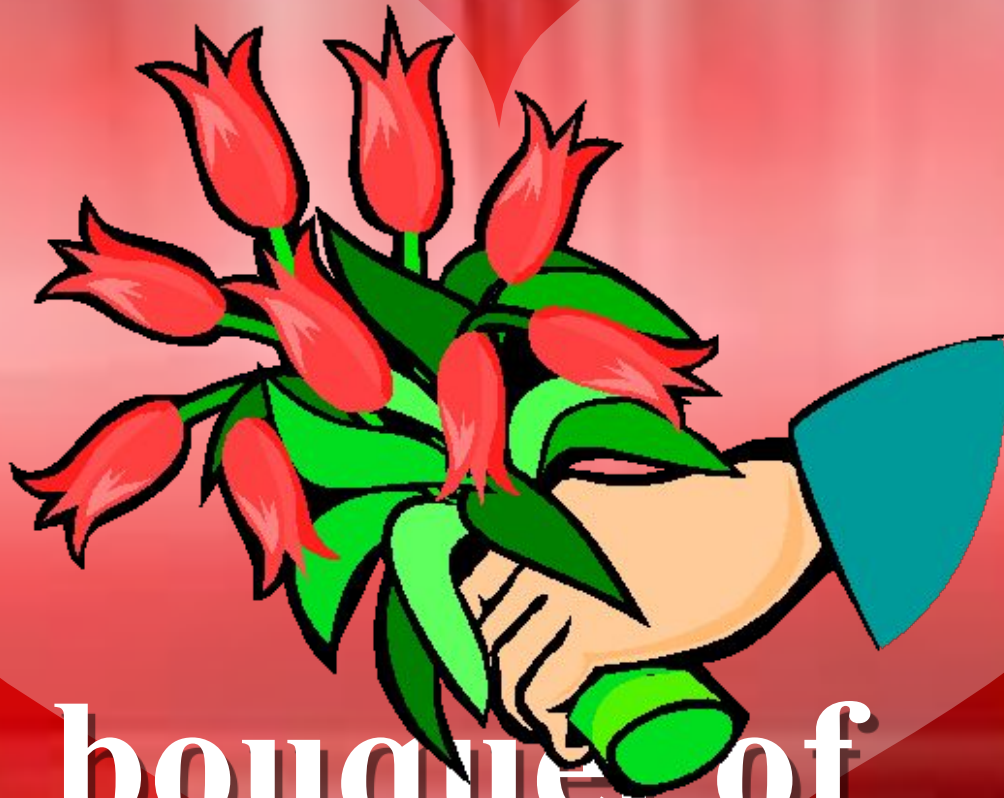


**chocolate
candy**



Valentine's Day vocabulary

7/9



bouquet of
flowers



Valentine's Day vocabulary

8 / 9



rose



Valentine's Day vocabulary

9 / 9



perfum
e



Valentine's Day

GAME
Cupid's choice



Click the correct heart



BOB



TOM



PAUL



PHIL

He is eating pop corn



Click the correct heart



ANDY



JOHN



DAVE

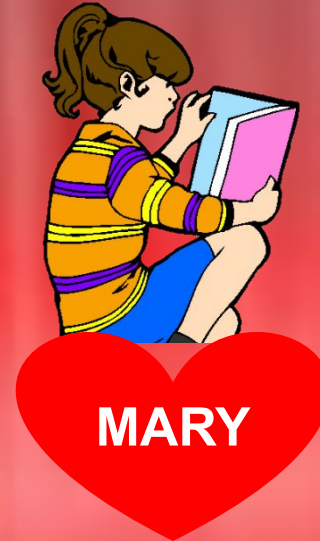
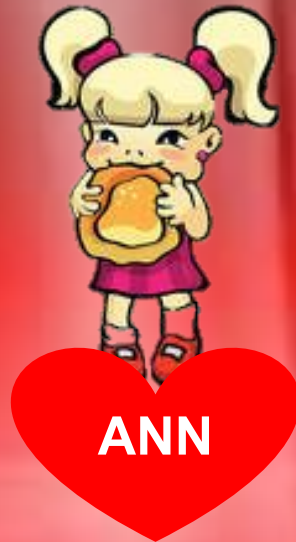


JIM

He is playing baseball



Click the correct heart



She is dancing



Click the correct heart



MEG



CINDY



LYNN



NORA

She is singing



Click the correct heart



**Louise
& Ben**



**Peter
& Gina**



**Amy &
James**



**Lisa &
Mark**

They are waiting



Happy
Valentine's Day

