

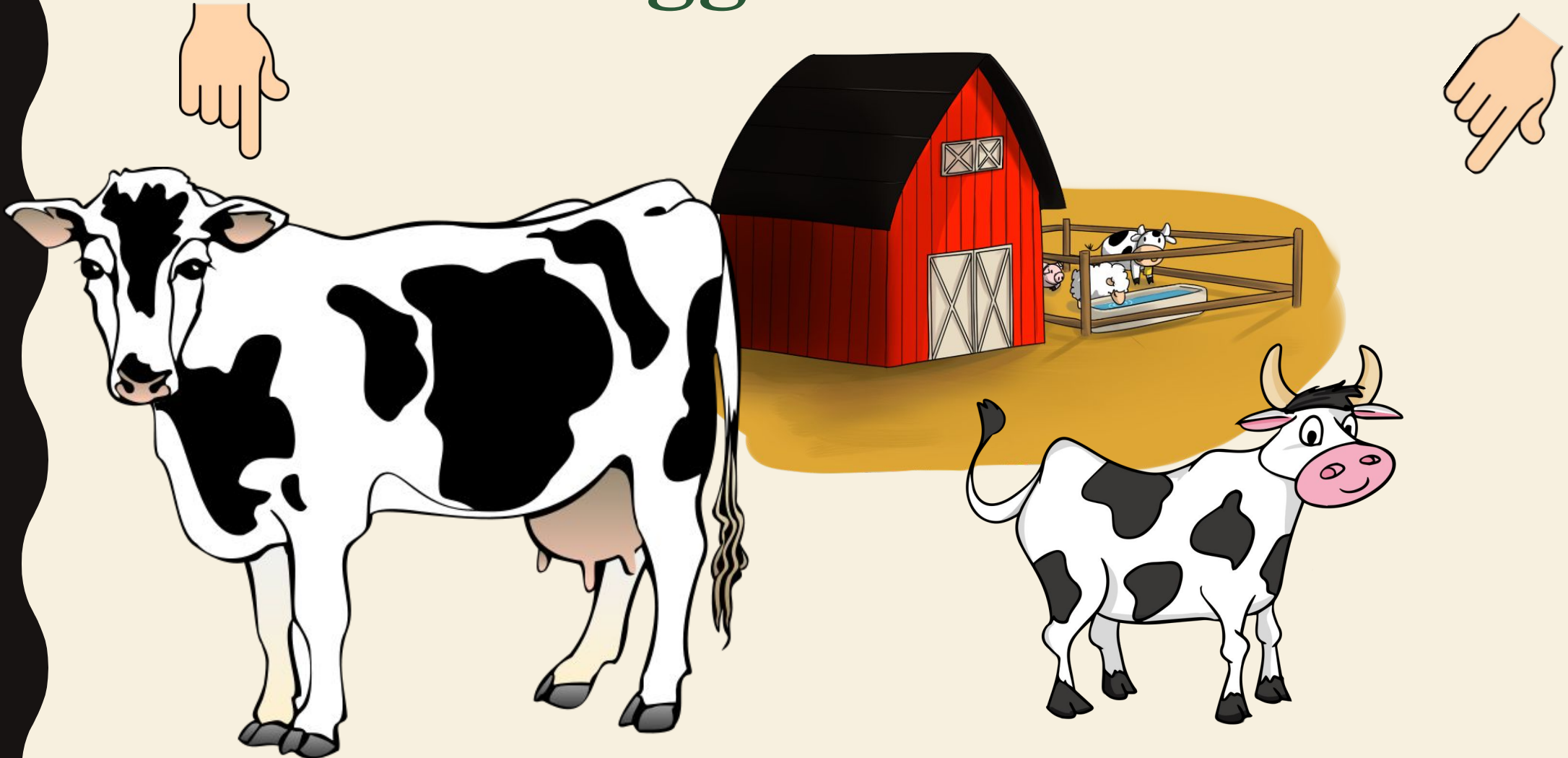
**LOOK AT ALL THE
ANIMALS**

Sami_lahiji@yahoo.Com

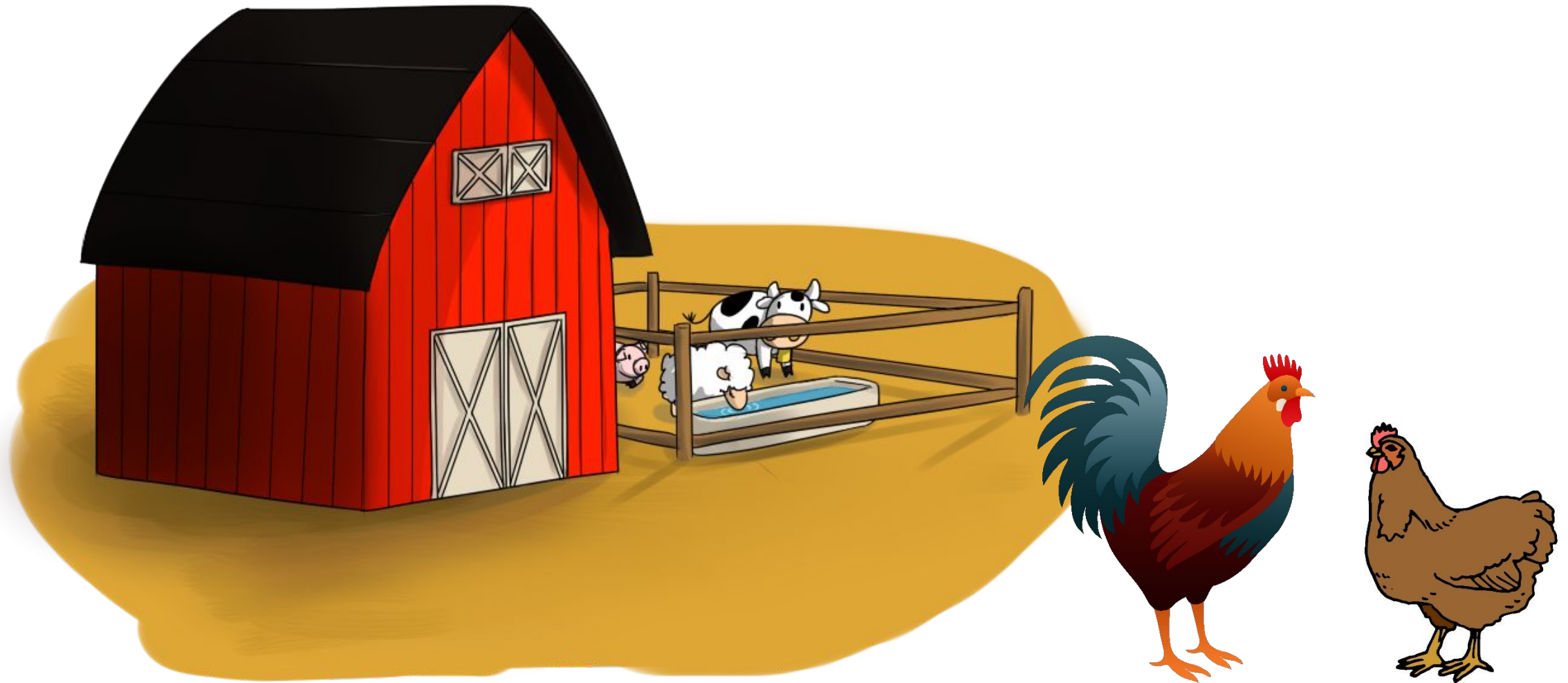
Cows live on the farm.



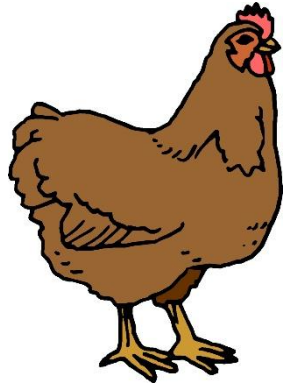
This cow is bigger than that cow.



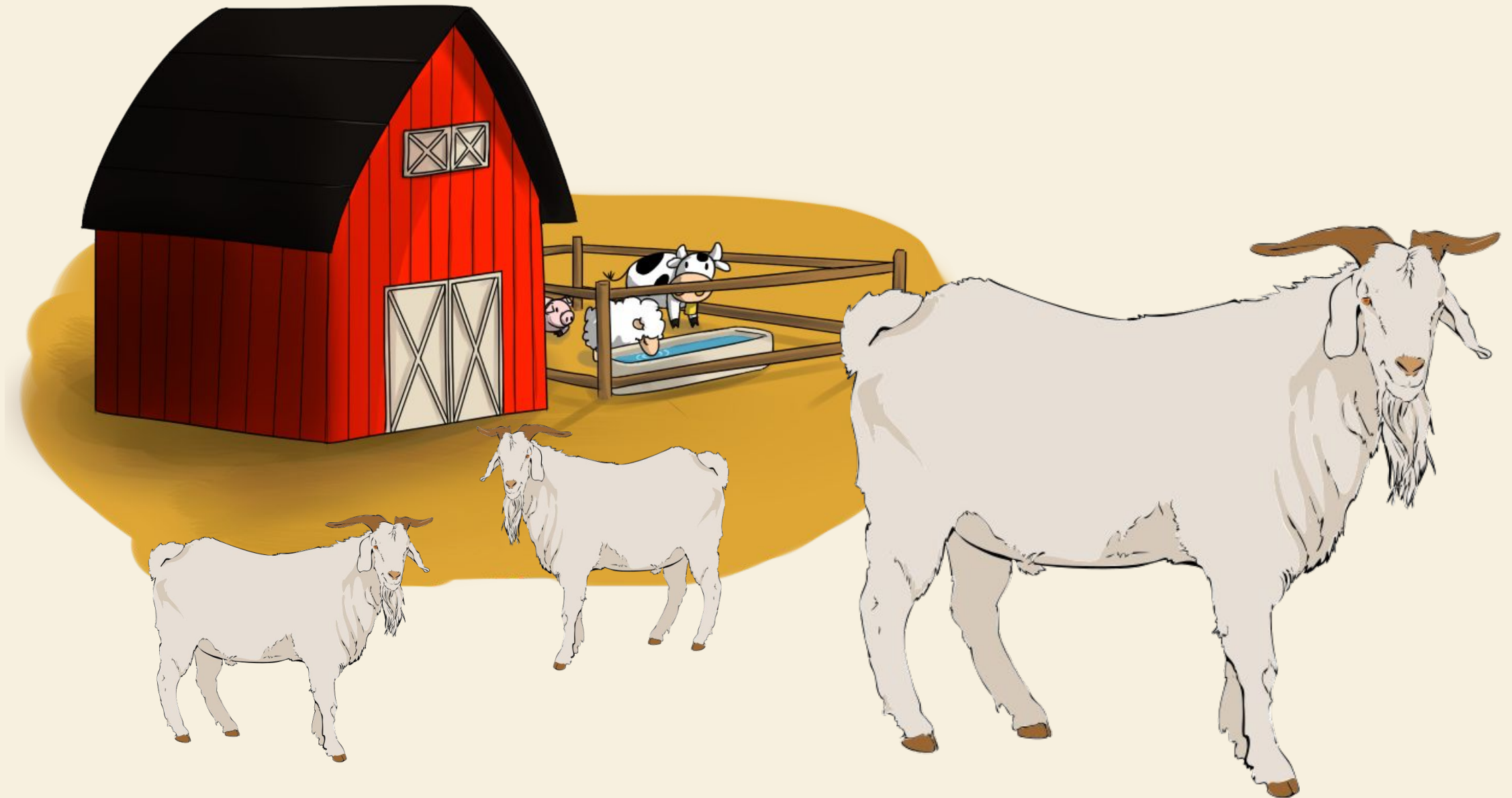
**Hens and roosters live on
the farm.**



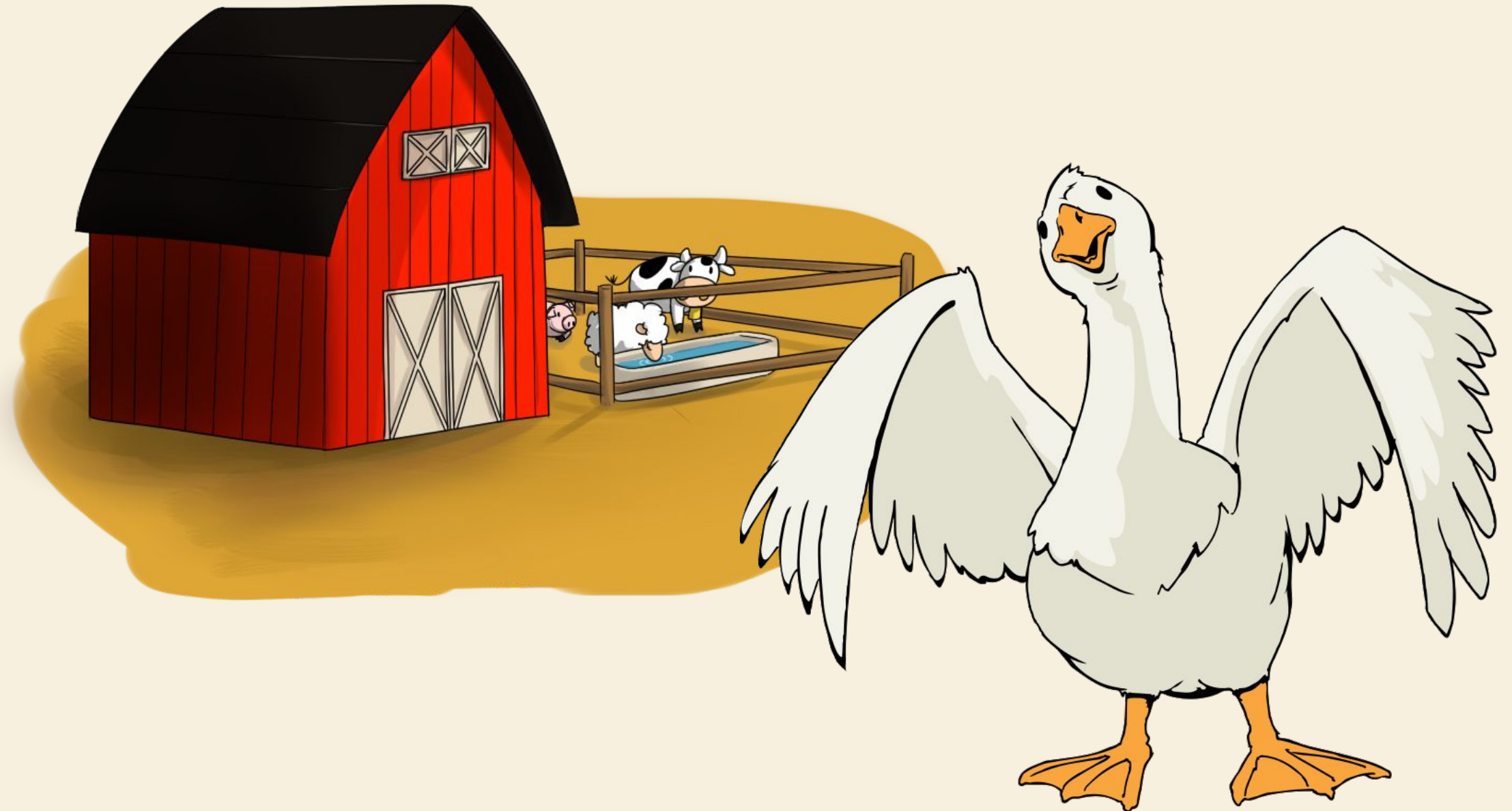
This hen is smaller than that rooster.



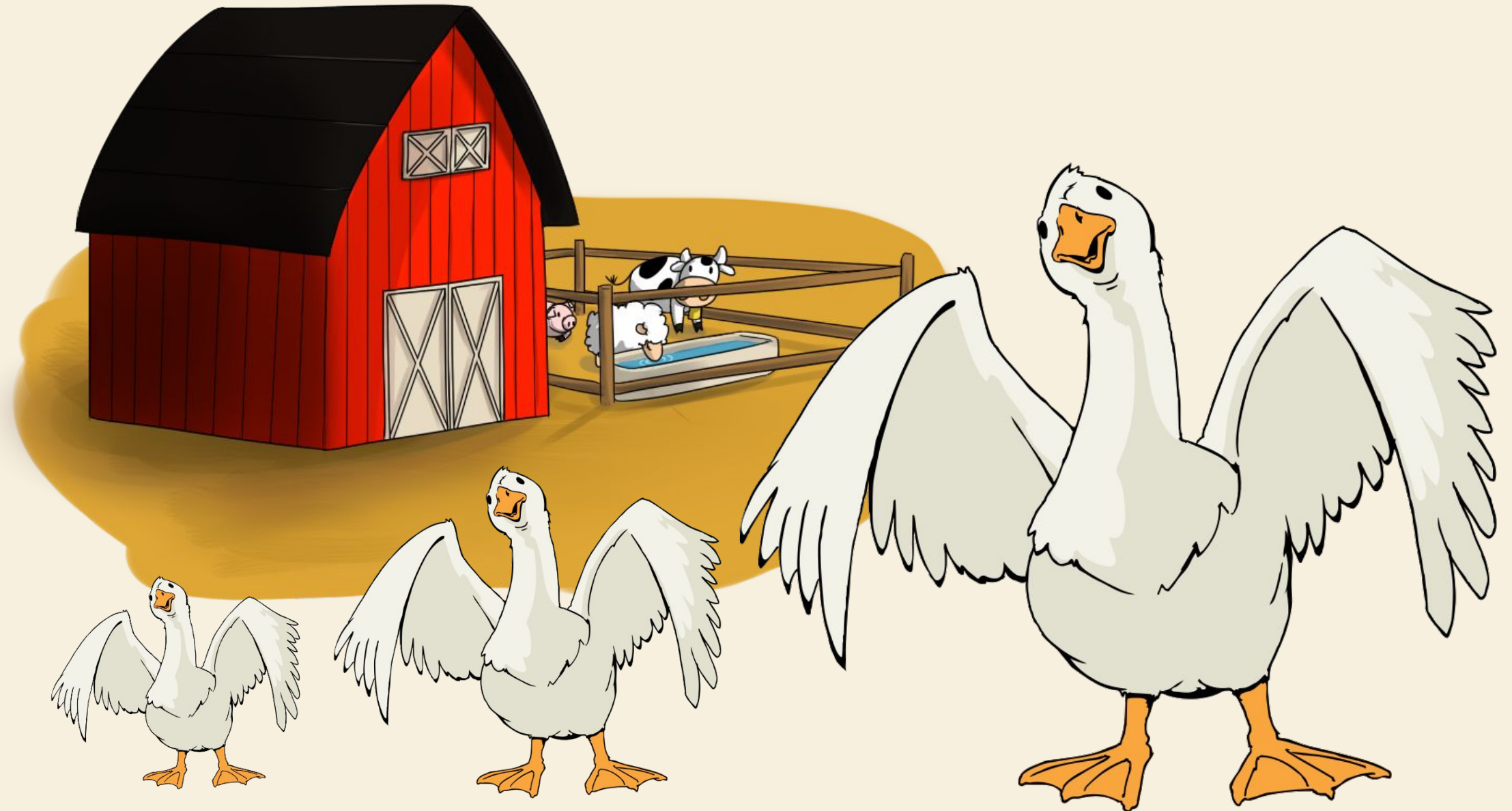
Goats live on the farm.



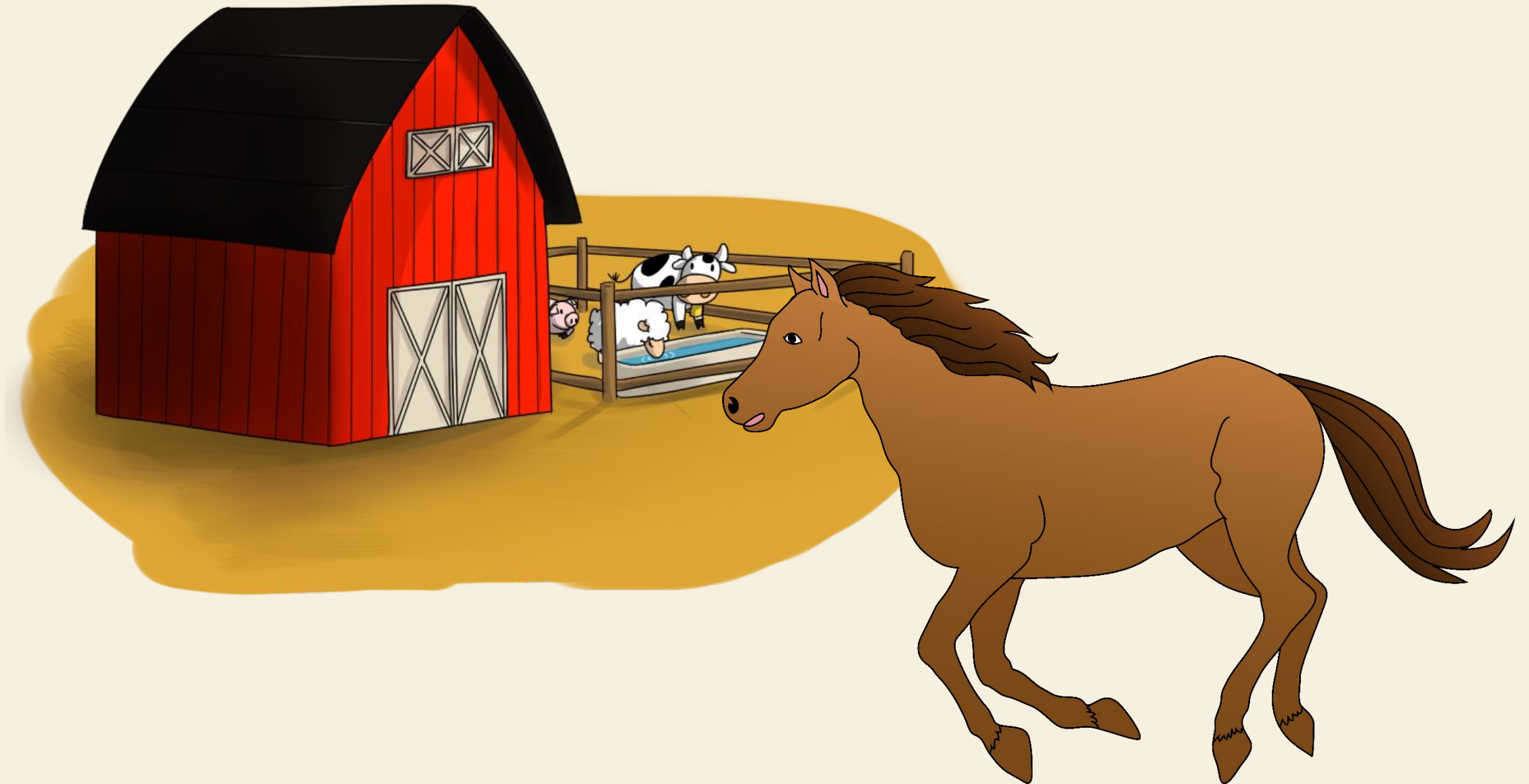
Goose lives on the farm.



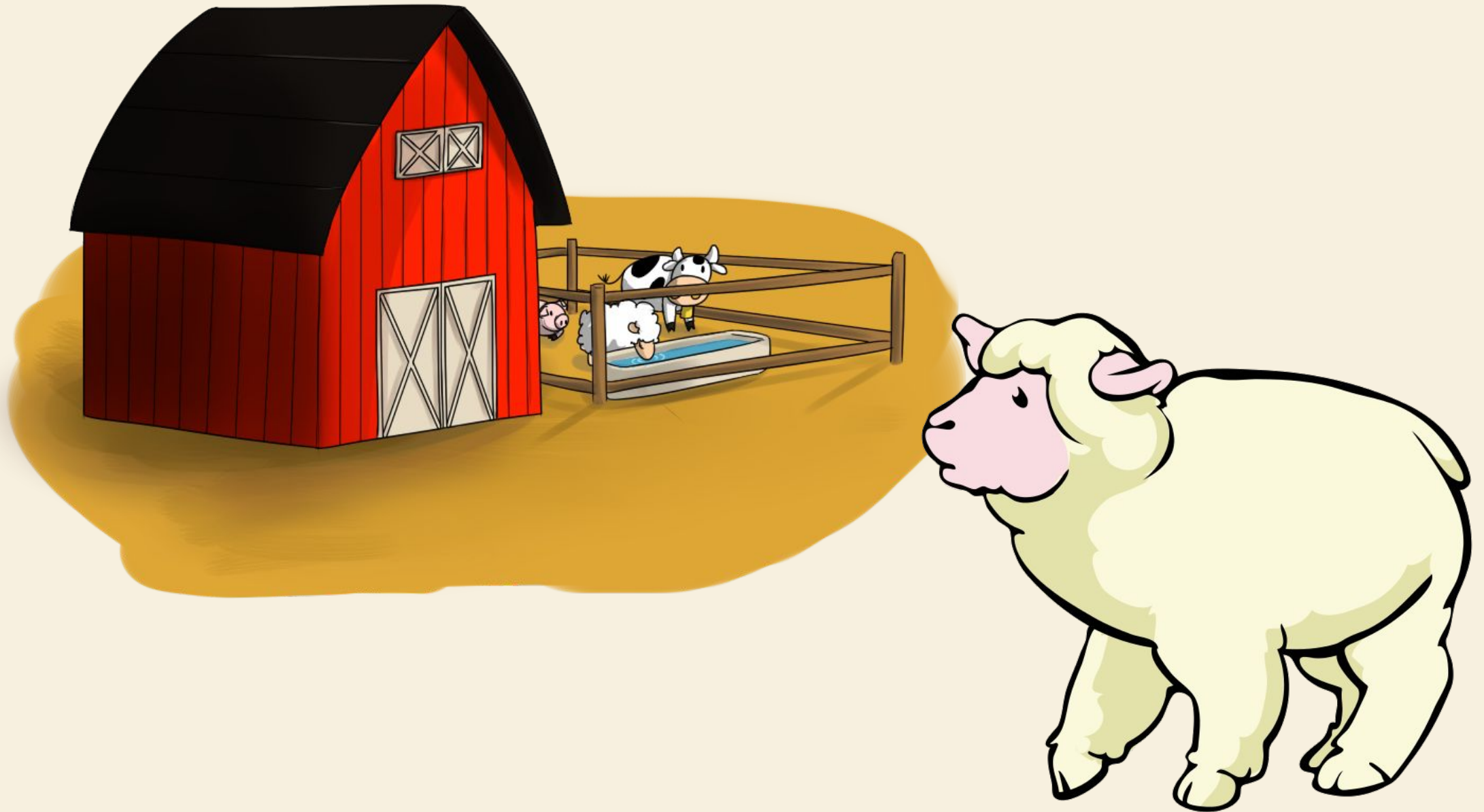
Geese live on the farm.



Horse lives on the farm.



Sheep lives on the farm.





THANKS

FAMILY AND FRIENDS 2.C