

# Pollution

{ to make Constance Borozdina

# Pollution in my city

1. factories
2. exhaust gases of vehicles
3. trash on the streets
4. dump

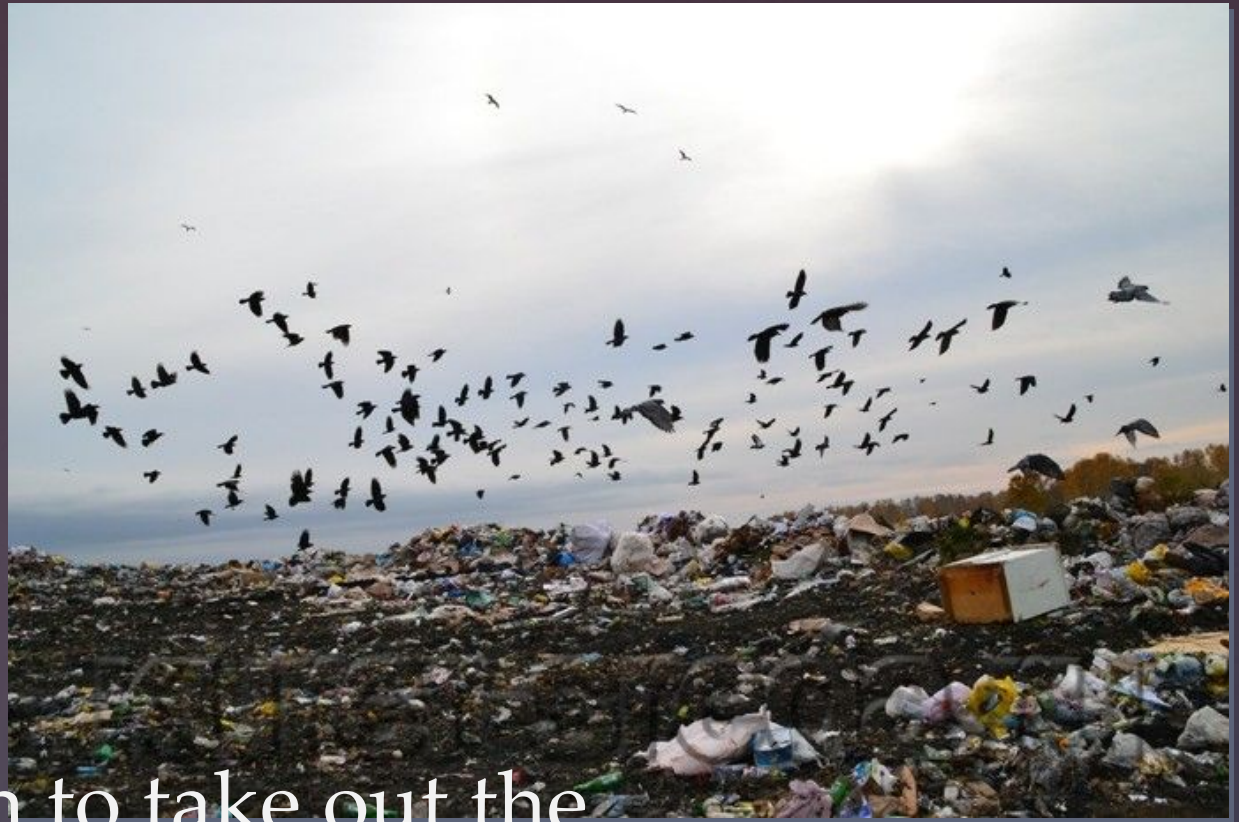


Than it is harmful

Industrial enterprises and motor transport emit black smoke and greenish-yellow dioxide, which increase the risk of early death.



# Dump



to the dustbin to take out the  
bulb that needs to be destroyed  
in any other way. dump burns  
and it burns with toxic  
substances that were emitted



A huge area of the Earth's surface is contaminated with human waste. Many of the toxic waste, threat for life of animals and humans. Scientists estimate that in a year, one city resident throws away one tone of rubbish! Today it is increasingly difficult to find a place to store even this is not very dangerous rubbish, such as plastic.



**Soil pollution**

# Water pollution


In the world there are a few rivers that would not be contaminated by products of human activity. Wastewater in rivers are fertilizer and pesticides from agricultural lands. And also they get water from the sewers and drainage ditches. Some plants is drained into rivers and lakes streams of dirty water. Water pollution of rivers and lakes nitrate fertilizers is growing in the world almost every week. In 1984, a victim of his was one of the lakes in the United States. Unfortunately, even in that case, if to prohibit the use of nitrate fertilizers tomorrow, the situation will deteriorate. Nitrates slowly for many years, seep through the ground into rivers or lakes. Dirty waste water and fertilizers get into lakes and reservoirs and cause the rapid growth of slime — algae that choke the river fauna and flora. So, in 1988 off the coast of Sweden Tina killed millions of fish.







# Nuclear waste



Most dangerous to all life on the planet are waste from nuclear production. Nuclear waste can cause cancer, DNA changes and death. Waste to become harmless and no radioactivity must pass 80 thousand years. But today, sometimes liquid waste is simply pumped into the sea and gas into the air. Solid wastes accumulate. Basically the radioactive waste buried, and sometimes stored on the ground in the containers. This is very dangerous, because at any moment they can appear cracks, leaks of harmful substances.



thank you for your  
attention!

