



Proxim Product Training Class
Tsunami 8000 Product family

Configuration and Management



Configuration options

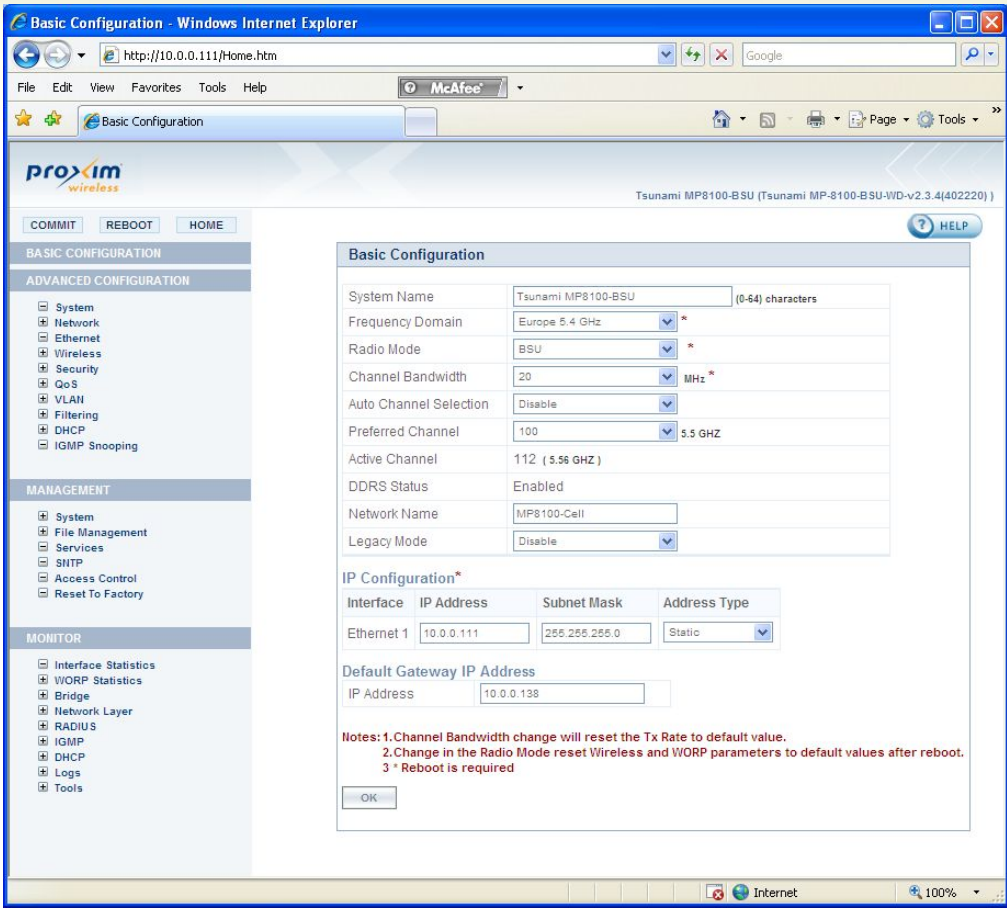
- WEB Browser, by connecting to the internal web-server, and using intuitive screens and forms
 - Requires an IP path between the computer on which the web browser runs and the Tsunami device
 - Can be performed remotely
- Telnet, by using CLI commands
 - Requires an IP path between the computer on which the Telnet client runs and the Tsunami device
 - Can be performed remotely
 - User may need the reference manual for exact command syntax
 - Series of commands can be saved in text file and copy/pasted in telnet window for execution (scripting)
- Serial port
 - Cannot be performed remotely, does not require IP path
 - User may need the reference manual for exact command syntax
 - Series of commands can be saved in text file and copy/pasted in telnet window for execution (scripting)



Configuration options

- **SNMP**
 - Requires an IP path between the computer on which the SNMP browser or manager runs and the Tsunami device
 - Can be performed remotely
 - Used by ProximVisionES
 - MIBs are provided to allow integration in user selected SNMP manager
- **User defined/edited configuration files**
 - Device configuration can be downloaded as an XML file.
 - It can then be edited and loaded back on to the device

- **UserName / Password**
 - admin / public
- **Menu Architecture**
 - Basic Configuration
 - Advance Configuration
 - Management
 - Monitor
- **Action Button**
 - OK
 - Save to temp configuration file
 - Commit
 - Apply to active configuration file
 - Reboot
 - Restart the device (needed for some modifications)



- UserName / Password
 - admin / public
- Menu Architecture
 - Standard Mode
 - Show basic information
 - Privileged mode
 - Show full configuration
 - Configure menu
- Configure Menu
 - Sub menu per feature
 - Need to commit to apply modification
 - Need to reboot for some features
 - Tab key automatically finish typing if there is no ambiguity

```
Telnet 192.192.192.82

Username: admin
Password:
?***** WELCOME TO COMMAND LINE INTERFACE *****
Please Type '?' for a Description on Commands and Parameters

QB-8100-EndPointB> ?
Possible completions:
aad      Antenna Alignment Display
clear    Turn off privileged commands
disable  Turn on privileged commands
enable   Exit from EXEC
exit     Send Echo Messages
ping     Show Running System Information
show     Trace Route to Destination
traceroute

QB-8100-EndPointB> enable
QB-8100-EndPointB# ?
Possible completions:
aad      Antenna Alignment Display
clear    Enter Global Configuration Mode
configure Turn off privileged commands
disable  Turn on privileged commands
enable   Exit from EXEC
exit     Send Echo Messages
ping     Show Running System Information
show     Trace Route to Destination
traceroute

QB-8100-EndPointB# configure
QB-8100-EndPointB(config)# ?
Possible completions:
commit    Apply the changed configurations to the device
dhcp      DHCP Configuration
ethernet  Ethernet Configuration
exit      Exit from configure mode
filtering Filtering Configuration
macacl    Macacl Configuration
management Management Configuration
monitor   Monitor Configuration
network   Network Configuration
qos       Quality of Service Configuration
radio-mode Radio Mode Configuration
radius    Radius Configuration
reboot    Reboot the device.Set 1 to reboot
security  Security Configuration
system-configure Country Code,Packet Mode Configuration
vlan      Vlan Configuration
wireless  Wireless Configuration
worp-qos  Worp Qos Configuration

QB-8100-EndPointB(config)# _
```

- Scripts
 - A series of CLI commands that can be executed in sequence
 - Can be created as plain text file using e.g. notepad.
 - Can be used to ease the configuration of large number of devices.
- Suggested approach
 - Use the reference manual.
 - Try commands on a unit nearby and verify the correctness of them.
 - Once found correct, save copy them in text file used as master set.
 - Create different scripts from the master set to make individual script files

```
QB8100 Master set.txt - Notepad
File Edit Format View Help
enable
configure
    radio-mode
        interface 1 radio-mode 4
    exit
exit
configure
    management
        system-information
            system-name QB8150_EPA
            phone-number +31612341234
            location Field
            email john.doe@company.com
            gps-altitude 100
            gps-latitude 52.39
            gps-longitude 5.23
        exit
    exit
    wireless
        worp
            radio 1 network-name QB8150link
        exit
    wireless
        properties
            radio 1 current-bandwidth 20
            radio 1 auto-channel-selection disable
            radio 1 configured-channel 100
            radio 1 cellsize medium
            radio 1 satellite-density medium
            radio 1 tpc 6
            radio 1 antenna-gain 28
        exit
    exit
    system-configure
        frequency-domain 11
    exit
    management
        telnet
            password public
        exit
        snmp
            read-write-password public
        exit
        http
            password public
        exit
    security
        security-profile
            rowadd 02 profile-name NETSecurityTypeAES
            rowadd 02 authentication-mode 5
            rowadd 02 encryption-type 7
            rowadd 02 key1 2234567890123456
            rowadd 02 key-index 1
            rowadd 02 entry-status 4
        exit
    exit
    worp-qos
        sfc-list
            rowedit 1 max-latency 30
            rowedit 1 tolerable-jitter 30
            rowedit 1 max-msg-inburst 16
            rowedit 2 max-latency 30
            rowedit 2 tolerable-jitter 30
            rowedit 2 max-msg-inburst 16
        exit
    exit
    commit 1
exit
configure
reboot 1
```

- Device configuration can be downloaded as an XML file.
- It can then be edited and loaded back on to the device
 - Before being able to download the XML configuration file it needs to be generated through CLI.
 - Two versions can be generated
 - Config file including passwords (in clear)
 - Config file without passwords
- Only change made during the current CLI session are saved into the XML config file

Retrieve from Device

HTTP

TFTP

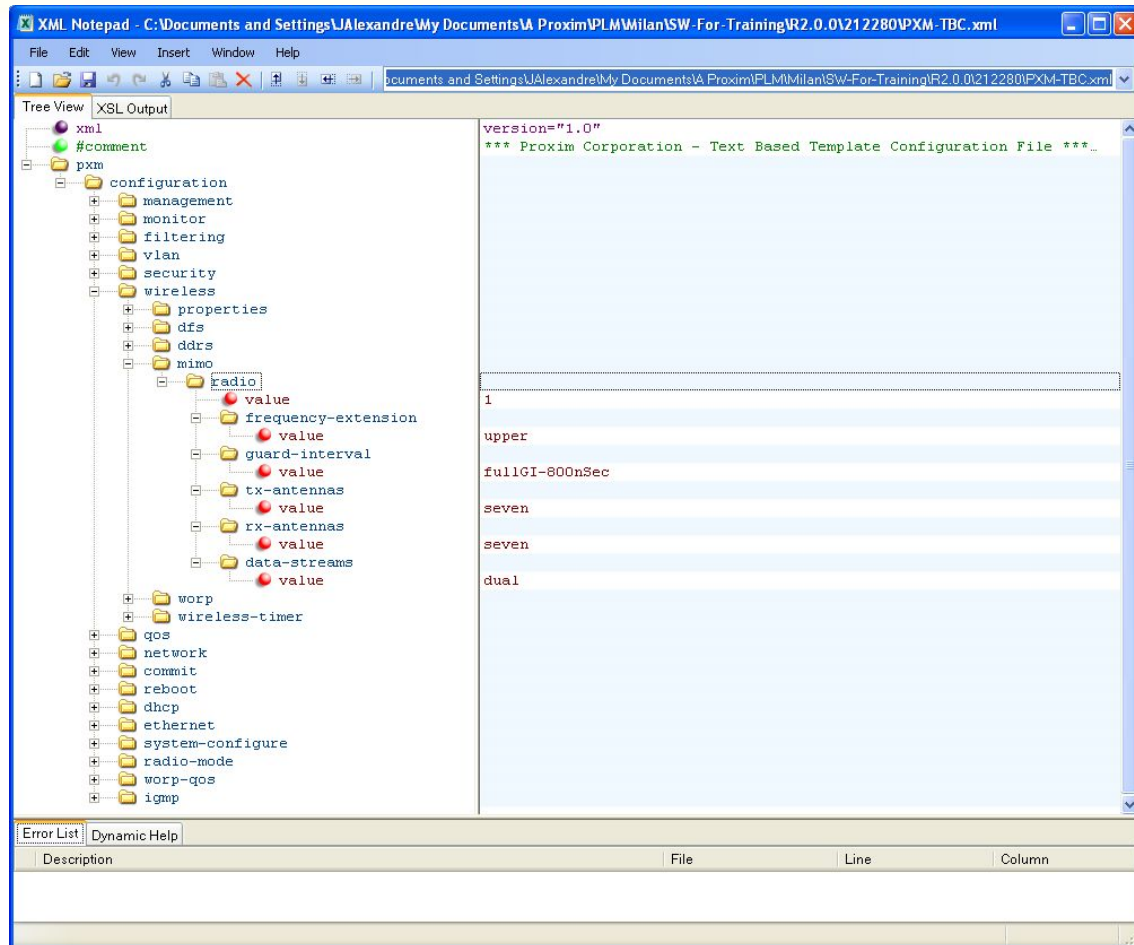
File Type

Text Based Template Config

Retrieve

```
C:\ Telnet 172.27.72.81
Username: admin
Password:
          !**** WELCOME TO COMMAND LINE INTERFACE ****!
          Please Type '?' for a Description on Commands and Parameters
T8000-C1:79:A8>enable
T8000-C1:79:A8# generate ?
Possible completions:
  tbc-with-pwds          Generate Text Based Template Config file with keys/pas
swords
  tbc-without-pwds       Generate Text Based Template Config file without keys/
passwords
T8000-C1:79:A8# generate tbc-without-pwds
Text Based Config Generated Successfully
T8000-C1:79:A8#
```

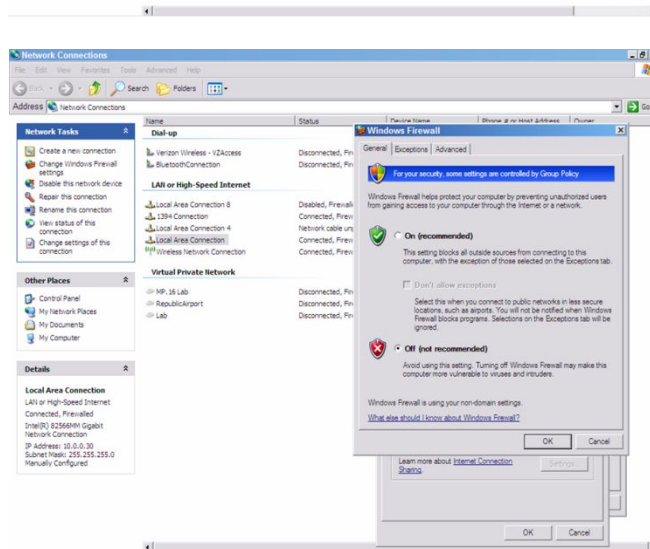
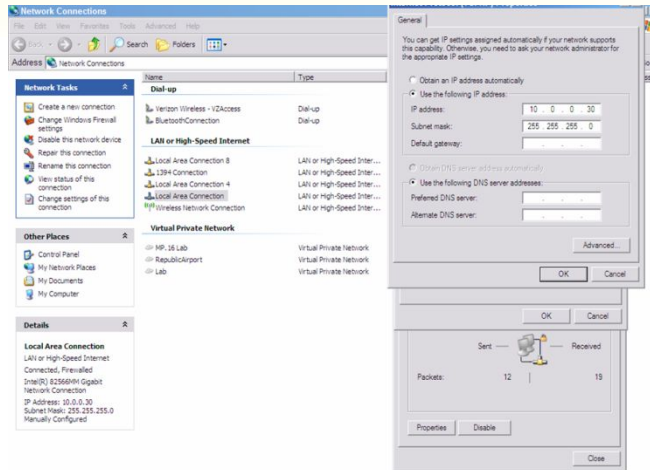

- Once downloaded, the XML config file can be edited with a standard XML editor.
 - Microsoft XML Notepad is an easy to use, free of charge XML editor.



<http://www.microsoft.com/downloads/details.aspx?familyid=72d6aa49-787d-4118-ba5f-4f30fe913628&displaylang=en>

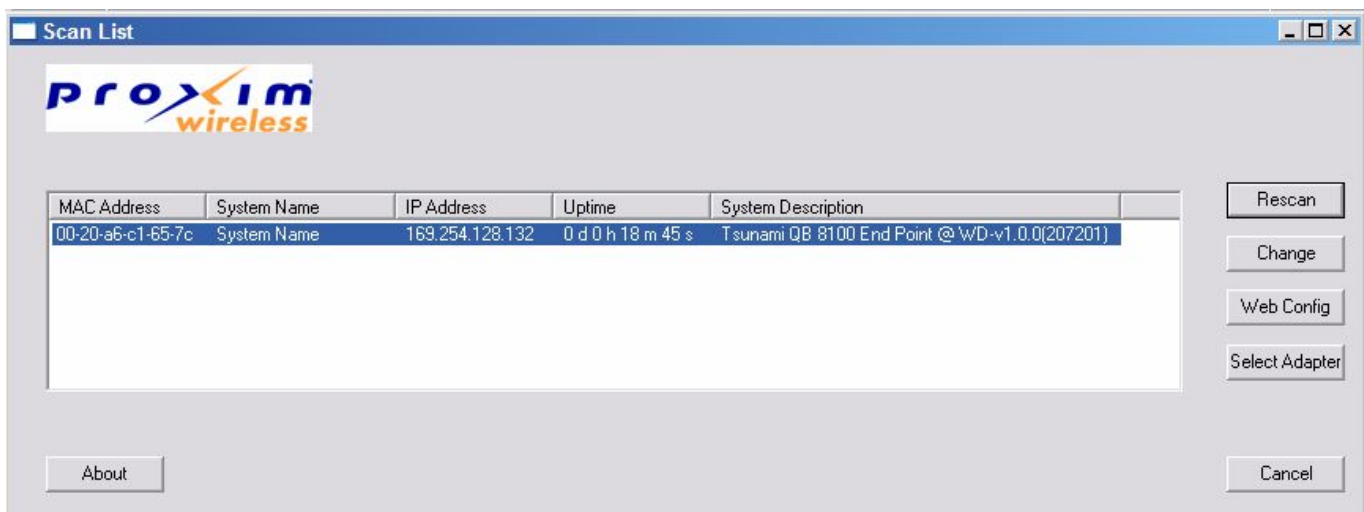
Configure PC to manage 8100

- Set the IP Address of the PC to be within the same subnet as the 8100 devices being managed

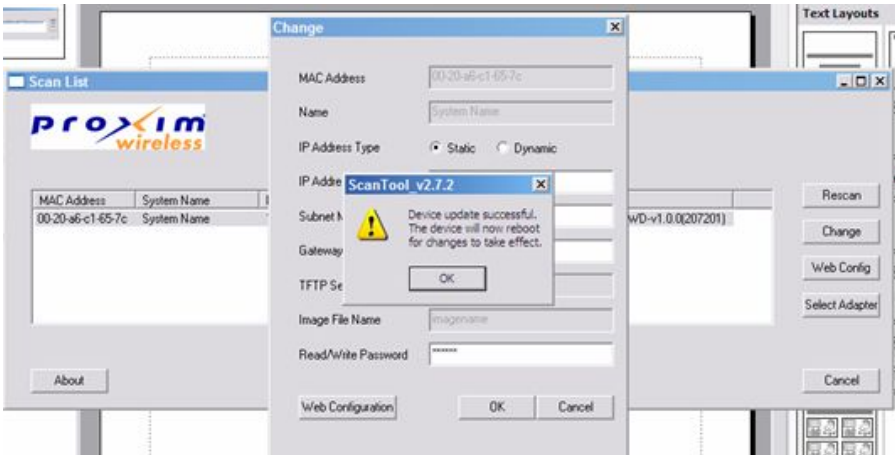
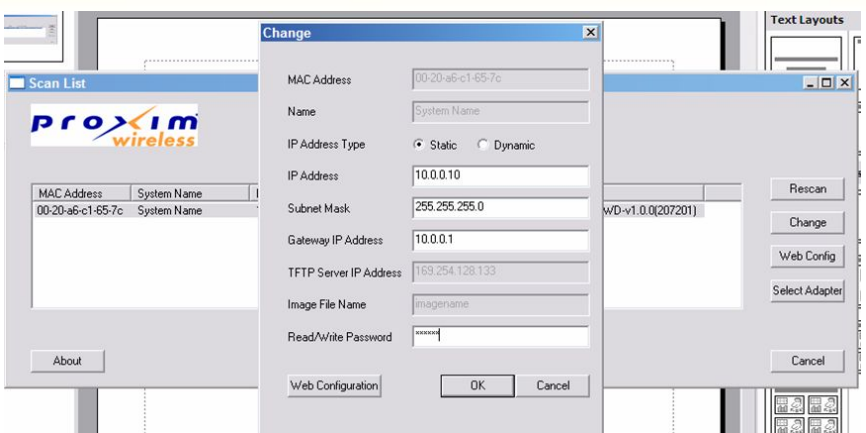


- When using Scantool, disable Windows Firewall to allow discovery of 8100 devices

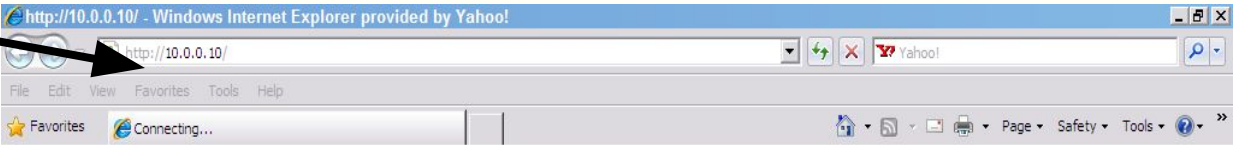
- Small windows application to be used to detect Proxim equipment
 - Configuration computer and Proxim device needs to be on same segment (the scan request will not pass through a router)
 - Shows IP addresses for Proxim devices found (even though these maybe in a different subnet from the configuration computer)
 - Allows making basic changes (IP address)
 - Can be used during forced reload procedure to “tell” the bootloader where the tftp server is and what the name is of the image that is to be reloaded



- After clicking 'OK' you will be prompted to accept changes and automatic reboot. Click 'OK'



Enter IP Address of device to be managed in URL bar of web browser i.e. IE, Mozilla, etc.



When prompted, enter username/password



Username: admin
Password: public



Home Page

Commit Button:
Used to 'commit' changes to memory

Reboot Button:
Used to reboot radio. Will also activate some changes

Home Button:
Clicking on this button will navigate to this page

Navigation Tree:
Select various buttons to navigate through the device

The screenshot shows the 'System Summary' page of a Proxim device. The browser window title is 'System Summary - Windows Internet Explorer'. The address bar shows 'http://10.0.0.111/Home.htm'. The page features a navigation tree on the left with buttons for COMMIT, REBOOT, and HOME. The main content area displays system information and an event log.

System Summary

System Name	Tsunami MP8100-BSU
System Up-Time	42:17:35:56 (dd:hh:mm:ss)
IP Address	10.0.0.111
Remote Partners	2
Radio Mode	BSU
Network Mode	Bridge

Interface	Status	Physical Address	Speed/Mode
Ethernet 1	UP	00:20:a6:c1:66:cc	100 Mbps / Full Duplex
Ethernet 2	DOWN	00:20:a6:c1:66:cd	
Wireless	UP	00:20:a6:c1:65:f4	DDRS Enabled

Event Log

```
00d:00h:01m:44s-->Channel 100 is set as the current channel.
00d:00h:01m:46s-->SU: Tsunami MP8100 SUA (MAC: 00:20:a6:c1:66:16) is trying to
00d:00h:01m:47s-->SU: Tsunami MP8100 SUA (MAC: 00:20:a6:c1:66:16) registered at
00d:00h:01m:58s-->SU: Tsunami MP8150-CPE (MAC: 00:20:a6:ca:e8:9b) is trying to
00d:00h:01m:58s-->SU: Tsunami MP8150-CPE (MAC: 00:20:a6:ca:e8:9b) registered at
```

Clear Event Log Refresh

Powered By
WEB SERVER



Configuration screens - live Operation

- AT this point the instructor will connect live to an 8xxx system and illustrate the various configuration screens when access the device(s) using the web interface

[Return to agenda](#)