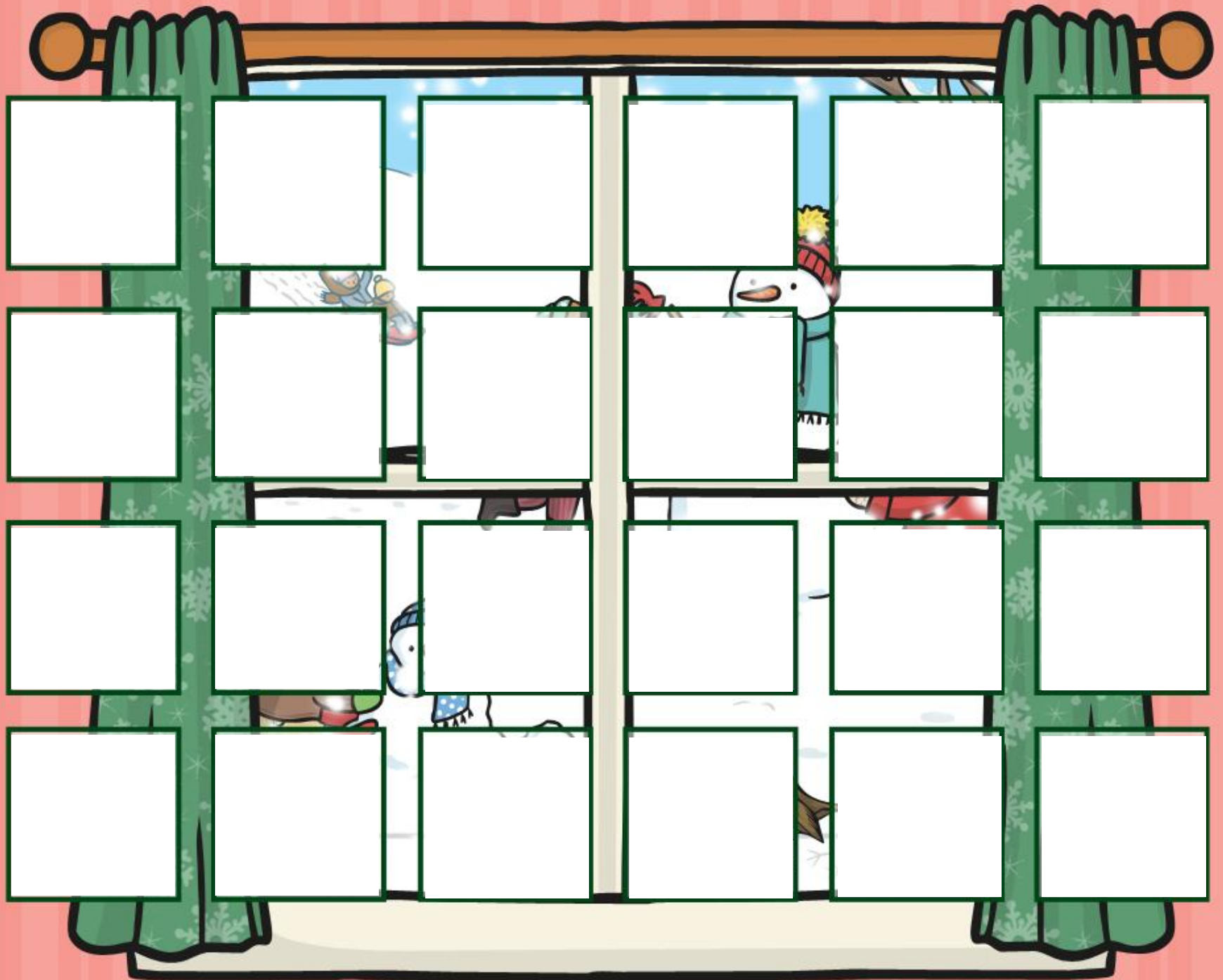




Christmas Riddles Advent Calendar

twinkl



1st December

I was first made popular in England after Queen Victoria's husband Albert put me up in Windsor Castle.

I used to be decorated with candles, sweets and cakes.

Today I am decorated with fairy lights, tinsel and decorations.

Today I come in all sizes and colours.

What am I?

Answer: a Christmas tree



Click the tree
to add it to the
Christmas
scene!



2nd December

I was first sent by Sir Henry Cole around 1843.

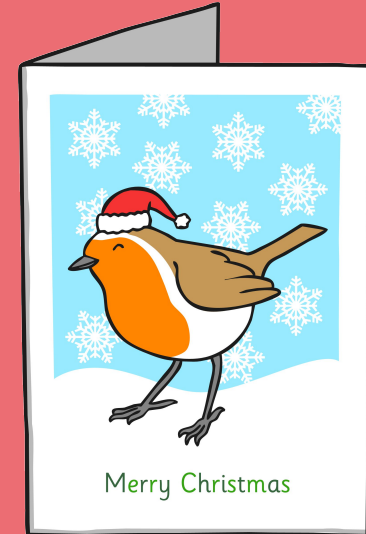
I sometimes arrive through the letterbox, but I can also be delivered by hand.

Some people hang me from string, put me on a shelf or stick to me to a

I come in lots of different sizes.

What am I?

Answer: A Christmas card



Click the card
to add it to the
Christmas
scene!



3rd December

I am usually hung up in people's houses.

Children open a different part of me each day.

Sometimes I have chocolate inside me.

I count down the days until Christmas.



What am I?

Answer: an advent calendar

Click the
calendar to add
it to the
Christmas
scene!



4th December

I was first invented by a sweet shop owner from London called Thomas Smith, in around 1846.

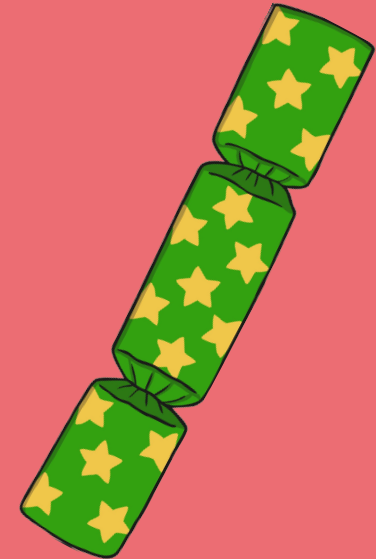
I can usually be found on dinner tables or hidden in Christmas trees.

I usually have paper hats, toys and jokes inside me.

I make a loud bang when you pull me!

What am I?

Answer: a Christmas cracker



Click the cracker to add it to the Christmas scene!



5th December

I originate from a Church in Germany.

I am often lit in Church services and in special school assemblies.

I have a red ribbon around my middle.

I am round and orange.



What am I?

Answer: a Christingle

Click the
Christingle to
add it to the
Christmas
scene!



6th December

I am traditionally made with raisins, nuts and cherries.

I should be stirred from East to West in honour of the Three Wise Men.

I am cooked in the oven.

Sometimes, I am covered in a drink called brandy and set alight.



What am I?

Answer: a Christmas pudding

Click the
pudding to add
it to the
Christmas
scene!



7th December

I work very hard all year and have a very good memory.

I have lots of different names like Papa Noel, Sinterklaas, Christkind and Weihnachtsmann.

I work in a workshop with my elves

I live in the North Pole.

What am I?

Answer: Father Christmas



Click Santa to
add him to the
Christmas
scene!



8th December

I was first performed in Italy in around 1223.

I am often performed in Churches and schools around Christmas time.

I have lots of characters in, including animals.

I tell the story of the birth of Jesus.



What am I?

Answer: the Nativity

Click the
Nativity to add
it to the
Christmas
scene!



9th December

I am usually hung on doors.

Sometimes I can be a decoration.

I am made from evergreens, twigs and flowers.

I am a circular shape.

What am I?

Answer: a wreath



Click the
wreath to add it
to the
Christmas
scene!



10th December

I can be made from brightly coloured felt or old socks.

I come out on Christmas Eve.

Sometimes I am hung up, sometimes I am put at the bottom of the bed.

On Christmas morning I am full of little presents.

What am I?

Answer: a stocking



Click the
stocking to add
it to the
Christmas
scene!



11th December

I am a popular Christmas dessert.

I am made from chocolate sponge.

Then I am covered in chocolate icing.

Sometimes I am decorated with holly.



What am I?

Answer: a yule log

Click the yule
log to add it to
the Christmas
scene!



12th December

I was first written in the early 1400s.

I can be heard in Churches and in people's houses.

I can sometimes be heard outside people houses.

I am sung.

What am I?

Answer: a Christmas carol



Click the
carollers to add
them to the
Christmas
scene!



13th December

I am round.

I can be eaten hot or cold.

Lots of people like to eat me with cream.

I am filled with dried fruit mix spices.

I am often left out for Father Christmas.



What am I?

Answer: a mince pie

Click the mince
pie to add it to
the Christmas
scene!



14th December

I originally come from Germany.

I taste of peppermint.

I am shaped like a shepherds crook.

I am usually red and white.

What am I?

Answer: a candy cane



Click the
candy cane to
add it to the
Christmas
scene!



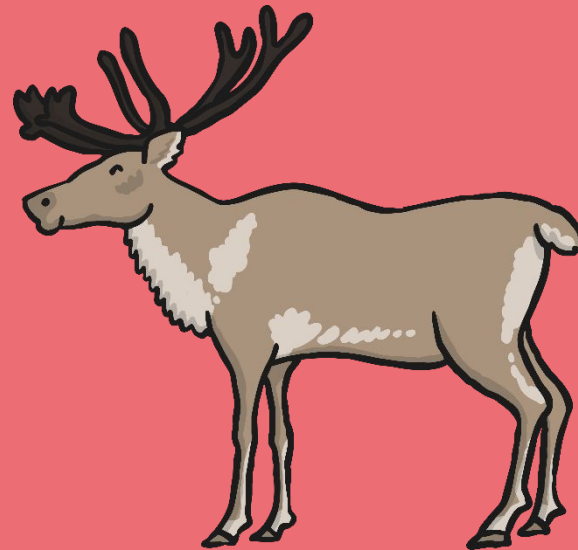
15th December

I have a very important job.

I have eight friends who I work with.

My busiest night is Christmas Eve.

I follow Rudolph.



What am I?

Answer: a reindeer

Click the
reindeer to add
it to the
Christmas
scene!



16th December

I am a symbol of love and friendship.

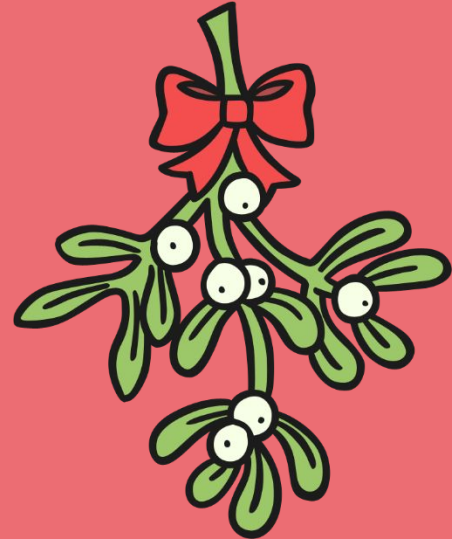
I can be used as a decoration.

I am usually hung from the ceiling.

If people kiss beneath me, I bring them good luck.

What am I?

Answer: mistletoe



Click the mistletoe to add it to the Christmas scene!



17th December

We are very loud!

You can hear us in Churches.

We are often used as decorations on Christmas trees.

We are rung to celebrate the birth of Jesus.

What are we?

Answer: bells



Click the bells
to add them to
the Christmas
scene!



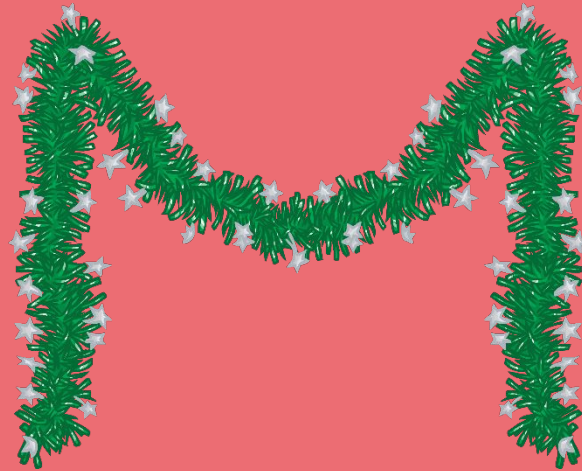
18th December

I was first made in Europe, in the 1600s from shredded silver.

Today I come in all sorts of colours.

I am often wrapped about the Christmas tree.

I can also be hung from ceilings and draped over things.



What am I?

Answer: tinsel

Click the tinsel
to add it to the
Christmas
scene!



19th December

I am a very important part of the Christmas story.

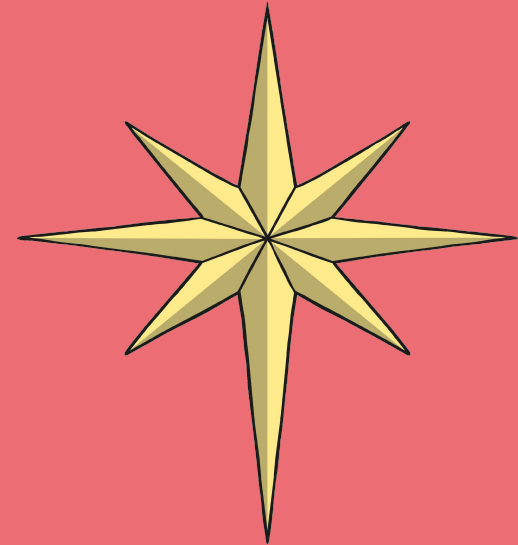
I helped the Three Wise Men find Jesus.

Christmas biscuits are often made in the shape of me.

I am sometimes put on the top of Christmas trees.

What am I?

Answer: a star



Click the star to
add it to the
Christmas
scene!



20th December

The first of us were given to baby Jesus.

We are given and we are received.

We are usually wrapped in Christmas paper.



What are we?

Answer: Christmas presents

Click the presents to add them to the Christmas scene!



21st December

We used to be used to decorate Christmas trees..

We are used to light carol and Church services.

We are also used in Christingles.



What are we?

Answer: candles

Click the
candles to add
them to the
Christmas
scene!



22nd December

One of my friends told the shepherds about the birth of baby Jesus.

I am often seen dressed in white.

I am often used as a decoration.

I am sometimes put on the top of the Christmas tree.

What am I?

Answer: an angel



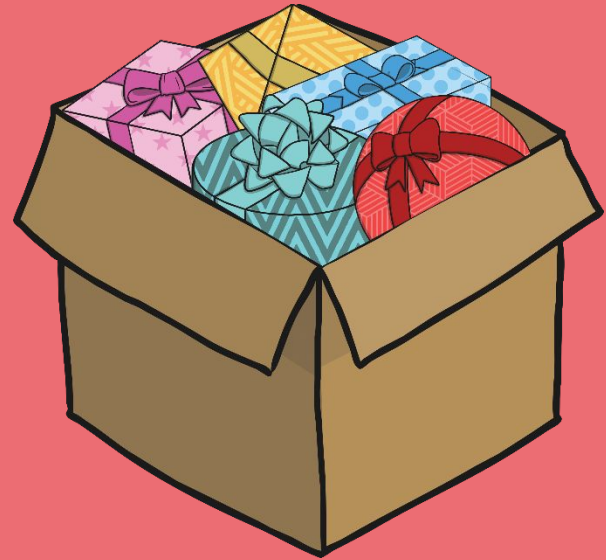
Click the angel
to add it to the
Christmas
scene!



23rd December

My name comes from boxes of gifts which used to be given to the poor.

I am always celebrated the day after Christmas on 26th December.



What am I?

Answer: Boxing day

Click the box to
add it to the
Christmas
scene!



24th December

I bring families and friends together.

I celebrate the day Jesus was born.

I am always celebrated on 25th December.



What am I?

Answer: Christmas day



