

#1914
97

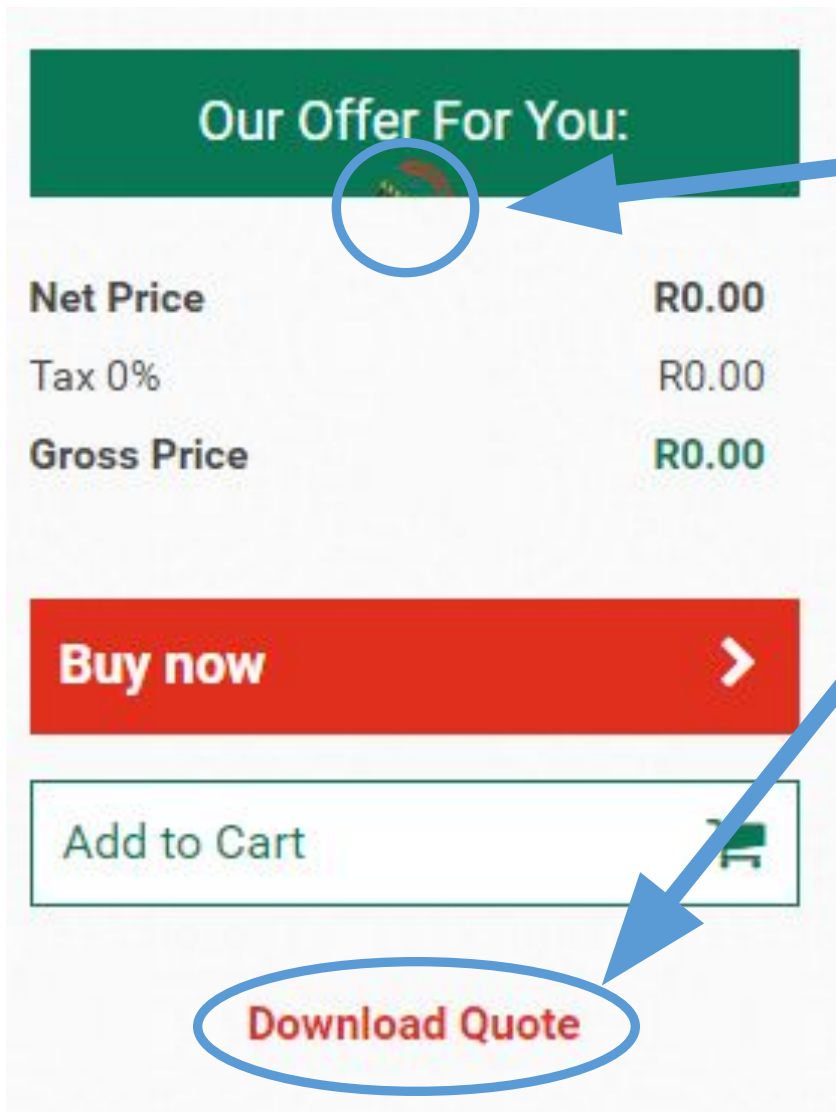
Code

#0977
54

#E02F
1D

#F6B4
0E

Frontend Comments Extended 9



Our Offer For You:

1

I want to see the full circle, so please make it also visible on the white/grey background!

Net Price

R0.00

Tax 0%

R0.00

Gross Price

R0.00

Buy now



Add to Cart



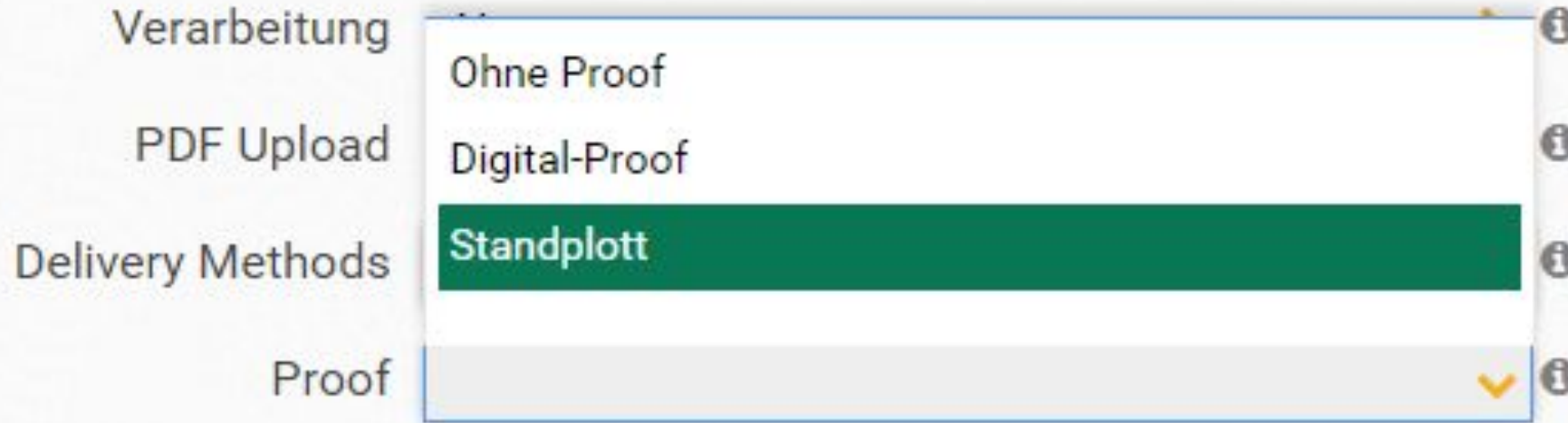
Download Quote

2

Use out black for the text here

For Dima

For Dima



1

When the dropdown opens upwards the blue line still appears (that happens when you click on a dropdown that is at the edge of your screen)
Get rid of it. The dropdown that opens upwards should look the same way as when opening it downwards!

1 Configure Your Flyer

Print run: 100



100

1000

10000

250

2500

15000

500

5000

Papers 130g matte



2

When highlighting the different quantity Options with mouseover – use our green and white font then (like the other dropdowns)

For Dima

2 Choose Your Delivery Time

1

Should look like this:

2

Remove this text! We have it already at the bottom next to the upload button

3

Remove the 24- hour production and also 48-hour production! We don't offer that in the beginning! (So just Express and Standard!

4

Call it: Express Delivery and Standard Delivery (not production)

5

Use the font you used above! This font does not fit!

Don't worry if you don't have your artwork ready yet. You can also upload it later on our confirmation page.



Delivery



Payment

Please pay before:

12:00* TUESDAY

Delivery date

18.07.2016



Arrival

Delivery will

arrive latest

12 TUESDAY
July

Deadline 15.07.2016

24-hour Production +35%

48-hour Production +25%

Express Production +15%

Normal Production

Continue shopping

Buy now



Is your artwork ready? Upload it. If not - Don't worry – you can also do it after ordering.

For Dima

The screenshot shows a delivery form with three main sections: Delivery, Payment, and Arrival. The Delivery section has four radio button options: 24-hourd Production +35%, 48-hourd Production +25%, Express Production +15%, and Normal Production. The Payment section has a 'Please pay before:' label and a box containing '12:00* TUESDAY'. The Arrival section has a 'Delivery will arrive latest' label and a box containing '12 TUESDAY July'. Yellow circles highlight the 'Delivery date 18.07.2016' in the Payment section and the 'Deadline 15.07.2016' in the Arrival section. Yellow arrows point from the '12:00*' in the Payment box to the '12' in the Arrival box, and from the 'TUESDAY' in the Payment box to the 'TUESDAY' in the Arrival box.

Delivery

- ☐ 24-hourd Production +35%
- ☐ 48-hourd Production +25%
- ☐ Express Production +15%
- ☐ Normal Production

Payment
Please pay before:
12:00* TUESDAY
Delivery date 18.07.2016

Arrival
Delivery will arrive latest
12 TUESDAY July
Deadline 15.07.2016

- 6 Switch the Dates: Delivery date belongs below Arrival date, Deadline belongs below payment date

The screenshot shows a delivery form with three main sections: Delivery, Payment, and Arrival. The Delivery section has two radio button options: Express Delivery +15% and Standard Delivery. The Payment section has a 'Please pay before:' label and a box containing '12:00* TUESDAY'. The Arrival section has a 'Delivery to arrive' label and a box containing '12 July TUESDAY'. Green circles highlight the '12:00* TUESDAY' in the Payment box and the '12 July TUESDAY' in the Arrival box. A green arrow points from the '12:00*' in the Payment box to the '12' in the Arrival box, and another green arrow points from the 'TUESDAY' in the Payment box to the 'TUESDAY' in the Arrival box. A red arrow points from the '12 July TUESDAY' in the Arrival box to the '12 July TUESDAY' in the Arrival box.

Delivery

- ☐ Express Delivery +15%
- ☐ Standard Delivery

Payment
Please pay before:
12:00* TUESDAY

Arrival
Delivery to arrive
12 July TUESDAY

Continue shopping Buy now

- 7 The dates should be shown (linked to) the respective boxes
- Optimal scenario Payment: the deadline date for payment is displayed in the box in form of exact TIME and WEEKDAY (14:00 not 12:00)
- Optimal scenario Arrival: the arrival date is also shown in the respective box underneath Arrival in form of DAY/MONTH + WEEKDAY

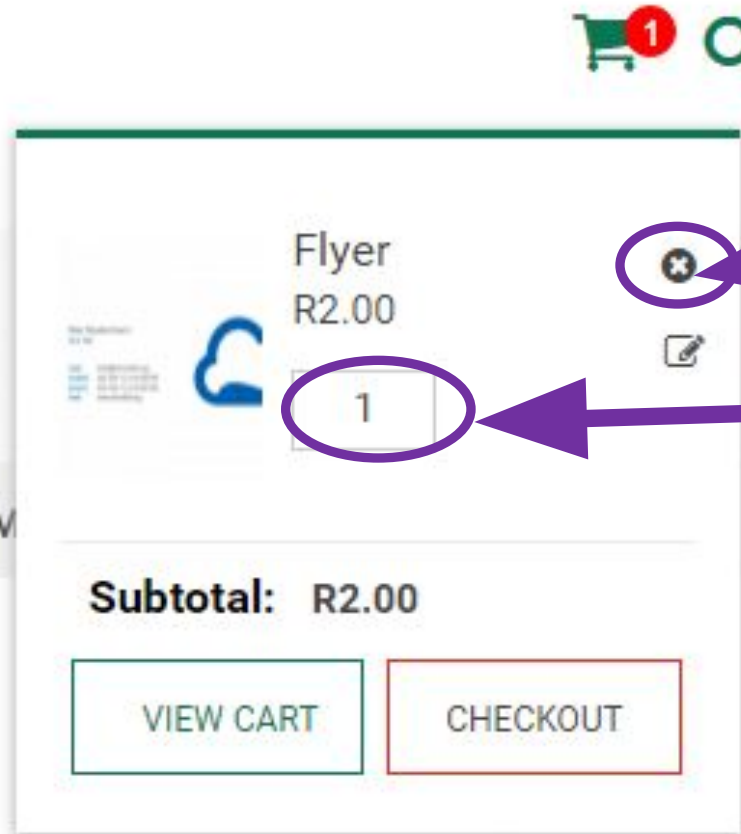
For Dima

8 Distribute evenly
in between all 3
Payment, Arrival)

Should fit in one line only! (like
here)

Align boxes and text lines
aligned! So it looks "clean"

9 Remove them in the responsive



1 Button does not work – error page

2 Get rid of input field – not possible to change quantity there

Make it next to each other

e.g.:

1000 Flyers, R27

500 Business Cards, R3

...

Shopping Cart (1)

5 Remove this (1)

6 Make our yellow

Continue Shopping

Products	Price	Qty	Discount	Move to Wishlist	Total
<div><div><div>Max Mustermann</div><div>012 345 6789</div><div>max@mustermann.de</div><div>012 345 6789</div><div>www.mustermann.de</div></div><div></div><div><div>Print Selection</div><div>Flyer: 130g matte, DIN A3 (297 x 420 mm), 1 Page, Full Colour on Both Sides, None, None, PDF-Datei, Standard, , No</div></div></div>	R2.00	1	R0.00		R2.00

For Andrey

3 Make buttons like this

USE VOUCHER Initial status
USE VOUCHER Mouseover/click

7 Make button like this

UPDATE CART Initial status
UPDATE CART Mouseover/click

4 Make lines longer (same length!)

DISCOUNT CODES

Do you have a promotional code?

SUB TOTAL

Checkout with Multiple Addresses

Subtotal

R2.00

Grand Total

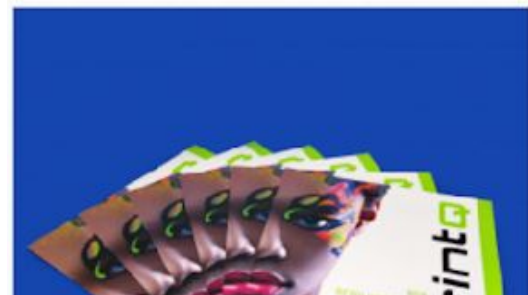
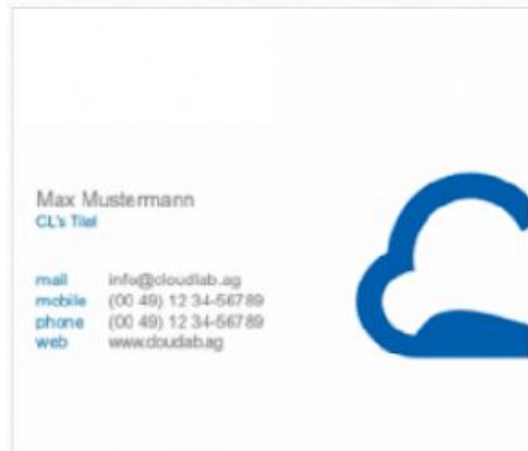
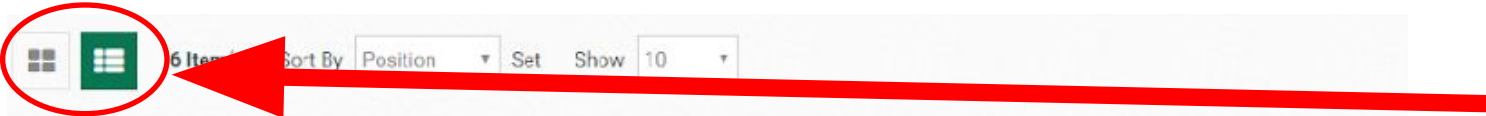
R2.00

2 Align buttons!!!

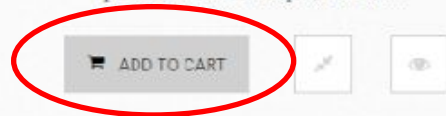
USE VOUCHER

PROCEED TO CHECKOUT

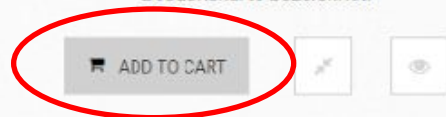
1 Change to "GO TO CHECKOUT"



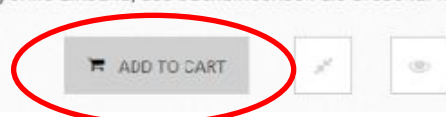
Flyer
€13.00
Lorem ipsum dolor sit amet, consectetur adipiscing elit. Phasellus pulvinar pellentesque leo ut consequat. Vivamus semper, felis ut



€0.19
Eine Visitenkarte ist ein Kärtchen mit Namen und weiteren Daten einer Person. Vornehm wird Besuchskarte bezeichnet.



Broschüre
€2.90
Eine Broschüre (im 18. Jahrhundert aus gleichbedeutend französisch brochure entlehnt) ist ein Umfang ohne Einband, das buchbinderisch als Broschur hergestellt wird.



1 When in the “list view” of product the buttons like this:

(ICON) ADD TO CART

Initial status

(ICON) ADD TO CART

Mouseover/
click

