

An aerial photograph of the Washington Monument, a tall, white, obelisk-shaped structure, standing prominently in the center. The monument is surrounded by a circular plaza with many small flags. In the background, the Potomac River flows, with a bridge visible on the right. The surrounding area includes green lawns, trees, and some buildings. The sky is clear and blue.

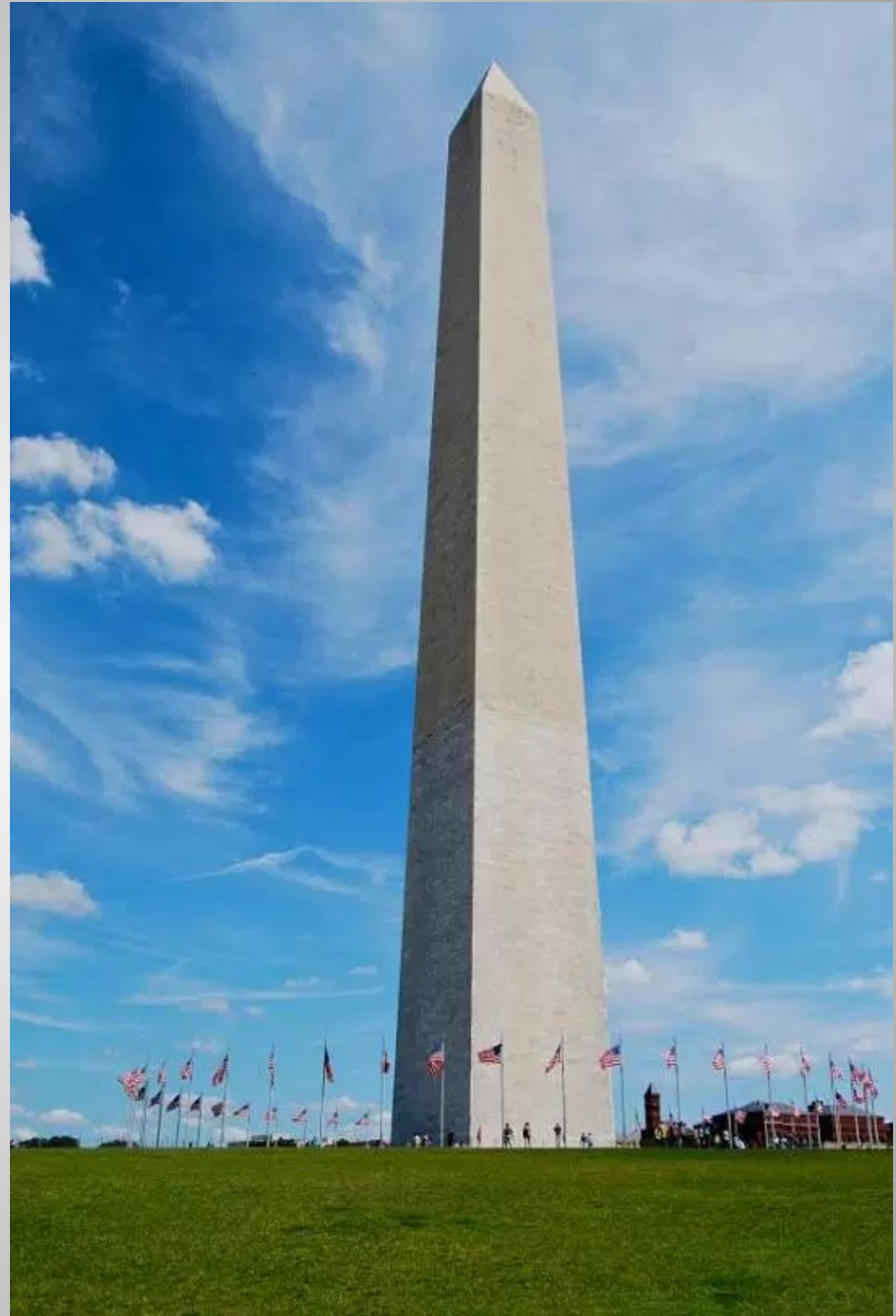
Washington Monument

Completed: Pushpashev M
Loginov D

2017

George Washington Memorial

George Washington Memorial was created in the image of the classical Egyptian obelisk. He towers over the city, being one of the highest stone constructions in the world. 50 Flags surround the base of the memorial and symbolize the 50 states of the Union. If you go up the elevator (лифт) to the top of the pyramid, from the windows of the observation deck (смотровая площадка) open views (виды) of the Lincoln Memorial, the White House, Thomas Jefferson Memorial and the Capitol Building.



The first premise*

The first call for the construction of the Washington Monument came back in 1783, when the Continental Congress decided that there should be the equestrian statue (конная статуя) in honor of the great general who had just led to the victory of his army volunteers in the War of Independence. But the new country had other problems and limited resources, and at the time of Washington's death in 1799 is no monument to the most revered man of America has not been delivered (не было поставлено)

* - первые предпосылки



Start creating*

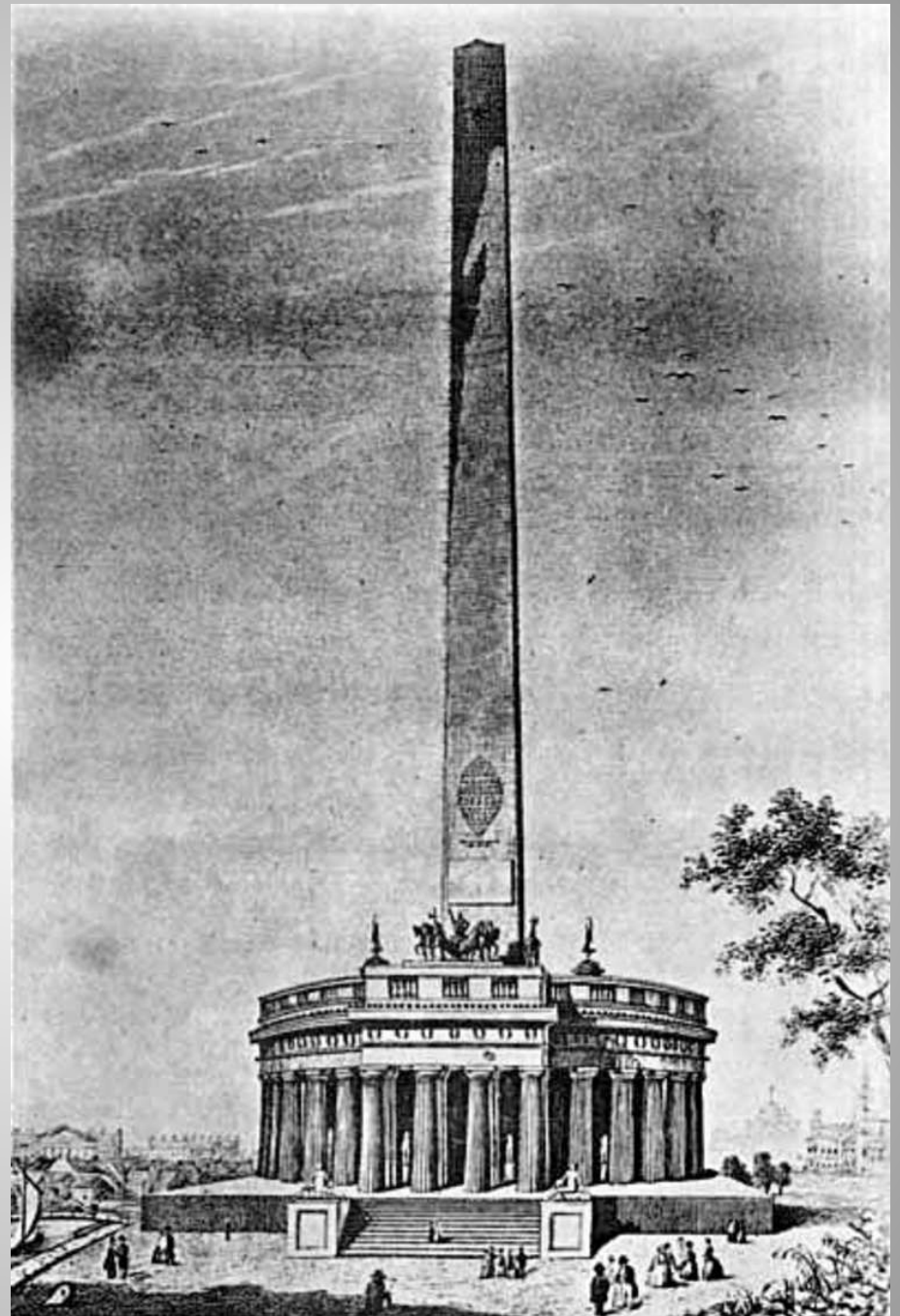
In 1833, prominent residents of the capital (видные жители столицы) have created an organization called the Society of the National Monument George Washington to raise money (чтобы собрать деньги) for the construction of the obelisk, which we see today.

* - начало создания

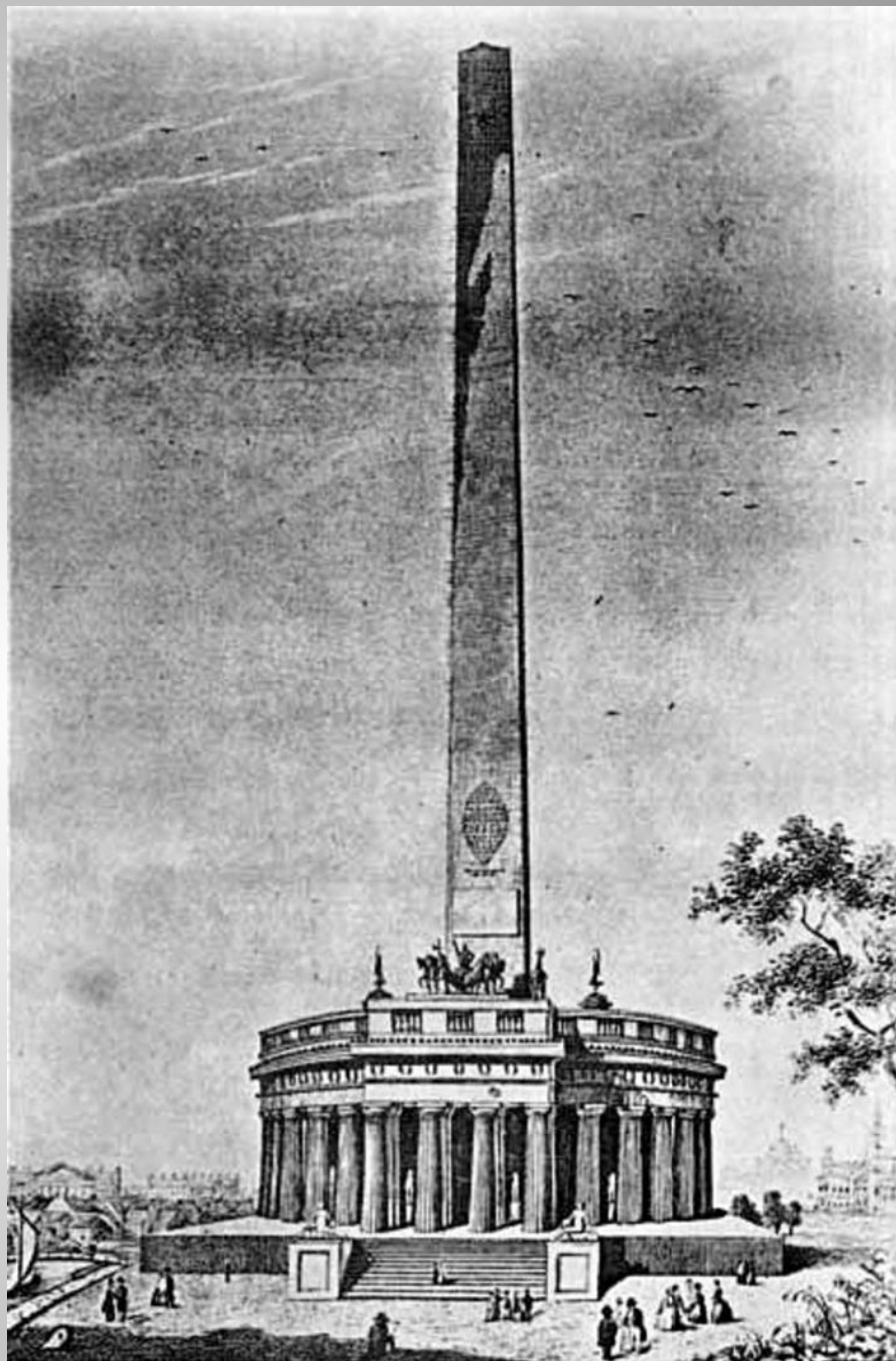


Project selection

In 1836, the Company commissioned (поручило) the architects to propose a monument projects. The winner was an engineer-architect Robert Mills. The initial design of the monument, designed by Robert Mills, has undergone significant changes (претерпел значительные изменения) during construction due to limited funds. The current view of the monument has little to do with the complex design of Mills, which is a combination of elements of Greek and Egyptian architecture and involves the construction of 600-foot obelisk surrounded by columns pantheon diameter 250 and height of 100 feet.

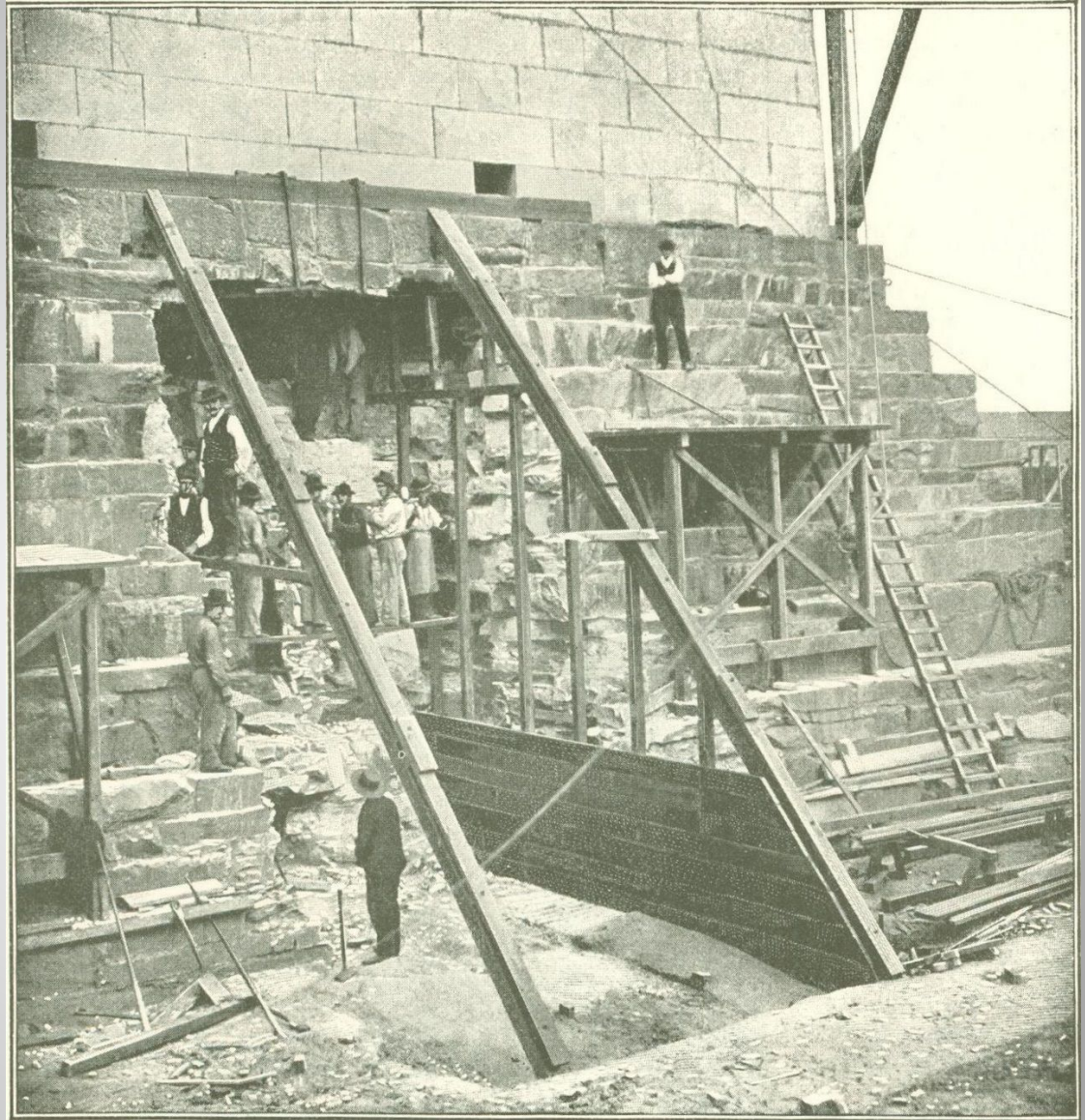
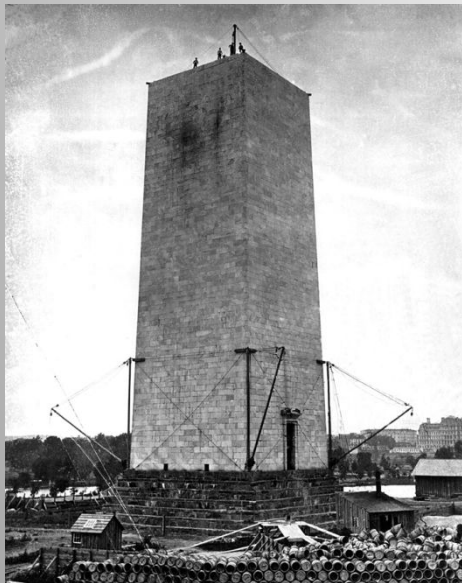


Between the columns were supposed to be 30 niches (НИШИ), which eventually had to be put statues of prominent (ВИДНЫЕ) Americans. Figure Washington wearing a toga and control triumphal chariot (КОЛЕСНИЦА), he was to serve as the entrance decoration (служить украшением входа).



Start of construction

The foundation of the monument stone was laid (**был заложен**) July 4, 1848 (Independence Day in the US), and has been used is the paddle (**лопатка**), which he used during the laying of the Capitol, Washington 55 years earlier

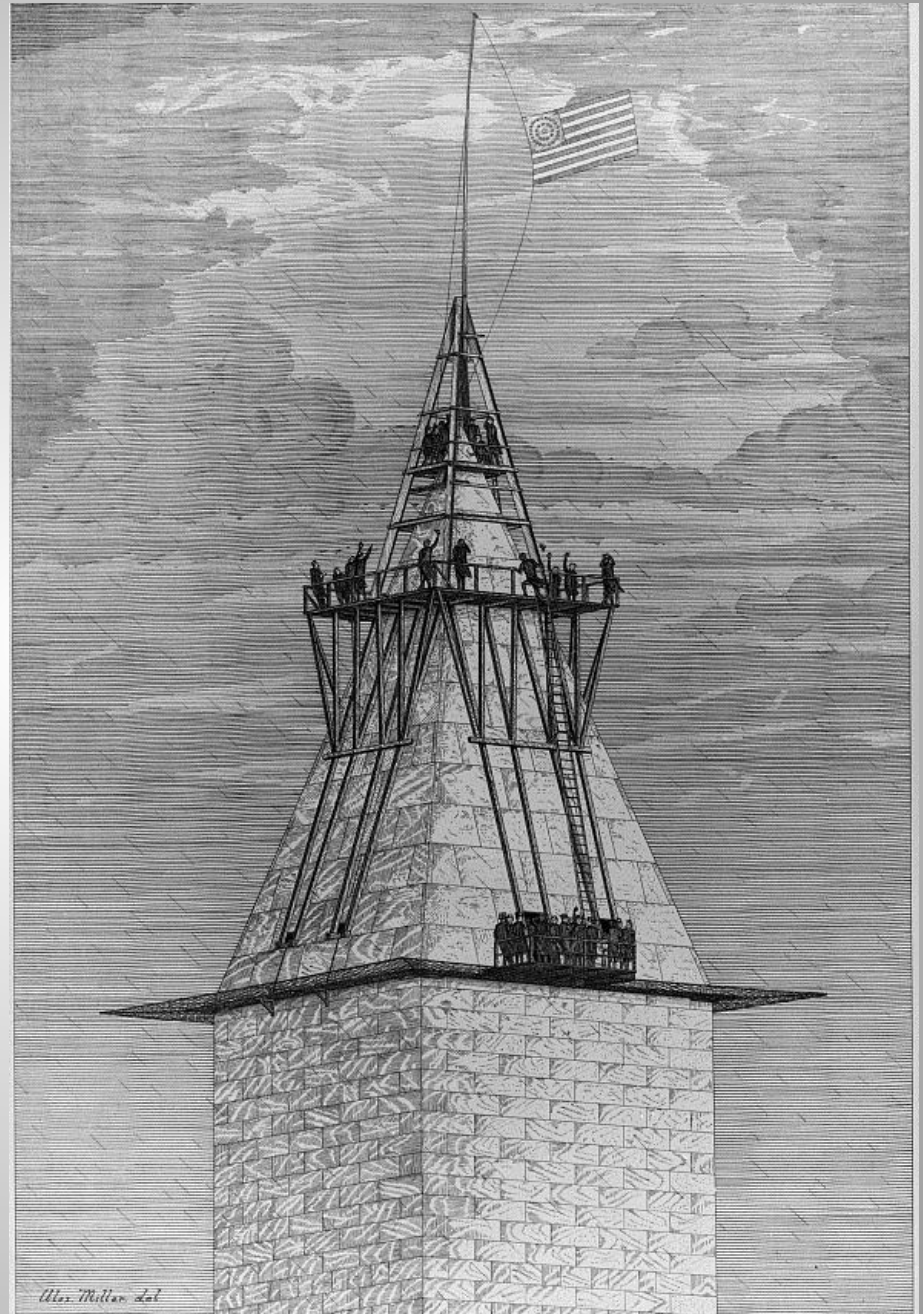


The first obelisk few years has
grown rapidly (быстро рос),
but most of the work was
interrupted (прервалось) in
the mid-1850s, when the
height of the monument was
raised to 46 meters: there was
a threat of civil war



Completion

In 1876, Congress appropriated funds (ассигновал фонды) to complete construction. December 6, 1884 was set the last keystone (замковый камень). The official opening ceremony took place on the platform just a few meters from the spire.



So he stands now, towering over Washington. The height of 169.3 meters, width (ширина) 16.8 meters at the base and at the apex (у вершины) of 10.5 m. The wall thickness (толщина стен) of 4.6 m at the base and 46 cm at the top. It weighs 79,590 tons. In 1888, it was installed a steam (паровой) elevator, which in 1901 gave way (уступил) to electric.



Different color marble top and bottom*

Because of failures (неудачи) in building the monument stood 25 years incomplete, about 150 feet high. Work resumed in 1880. However, once again delivered marble slabs (поставляемые мраморные плитки) were from another quarry (каменоломня). The difference in the color of the marble cladding notes the "old" and "new" part of the obelisk. Marble was supplied from three different quarries, and it was impossible to choose the perfect color for the old and new rock.

* - Разные цвета мрамора нижней и верхней части



Pond nearby*

Between the George Washington Memorial and the Lincoln Memorial is a Mirror Pond (зеркальный пруд). This pond is 2000 feet long and 160 feet wide contains 7 million gallons of water. It was created in the likeness of bodies of water (по подобию водоемов) in Versailles and Taj Mahal. Pond device (устройство) minimizes the anxiety (волнение) on the surface (поверхность) of the water and increases the sharpness (резкость) of the water reflection (отражение) of the monument.

* - пруд по соседству



Thank you for attention

