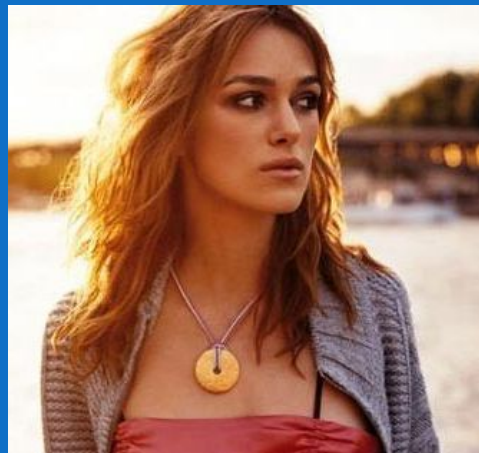
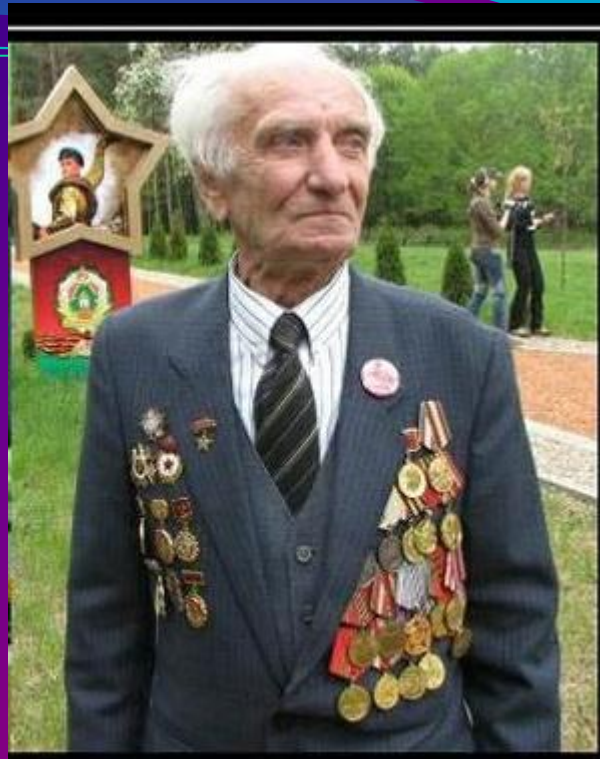


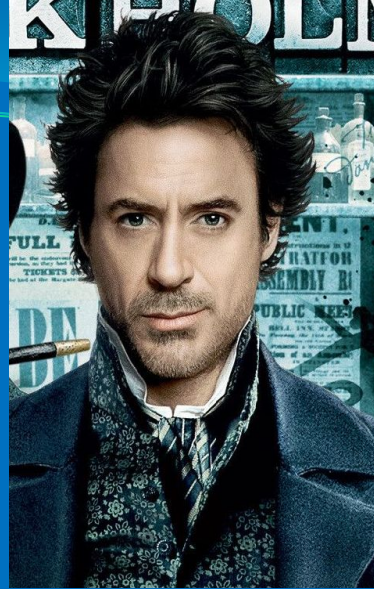
Describing people



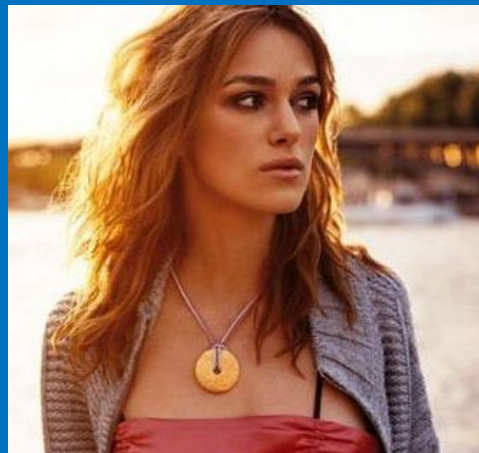


Appearance and
traits of
character





Describing people



DESCRIBE, PLEASE

- ❖ **Age**
- ❖ **Appearance**
- ❖ **Hair**
- ❖ **Eyes**
- ❖ **Nose**
- ❖ **Height**
- ❖ **Build**
- ❖ **Character**



What type of person are you?
Do the quiz, check your score

1. What is the first thing someone notices when they walk into your bedroom?

- A** the posters
- B** the furniture
- C** the mess

2. What do you keep in your drawers?

- A** souvenirs and knick knacks
- B** neatly organized essential items
- C** magazines and sweet wrappers

3. Where is favorite item of clothing right now?

A in the wash

B clean and hanging in your wardrobe

C you're wearing it

4. What do you usually head straight for when you go into your room?

A your CD player

B your desk

C your bed

5. What do you do if mum tells you your room is messy?

A tell her to stay out of your room

B tidy up

C hide everything under your bed

6. What is the last thing you do before you go to bed?

A write in your diary

B put out what you need for the next day

C listen to your favorite CD

Mostly As: You are creative and thoughtful. You like to express yourself either through art. music. Writing or sport

Mostly Bs: You are sensible as well as ambitious. You know what you want and you always plan ahead.

Mostly Cs: You are easy-going and joyful and take each day as it comes. You are honest and caring but value your privacy

Match the words in list A with the words in list B to make up phrases of physical description

1. pale
2. deep-set
3. thin
4. plump
5. short
6. curly
7. of medium
8. broad
9. tanned
10. skinny

- a. figure
- b. complexion
- c. height
- d. lips
- e. nose
- f. eyes
- g. shoulders
- h. hair
- i. skin
- j. face

Face	Hair	Eyes	Character	Body	Special features
straight round oval wrinkled freckled	shoulder-length blonde wavy straight muscular	green big fat blue clear	lazy turned up sociable polite violent	tall fat curly long-legged well-built	balding dimples curved beard moustache

Fill in the antonym table positive / negative character traits

*patient, boring, pessimistic, mean,
ambitious, generous, mature,
interesting, hostile, immature, friendly,
impatient, tactful, good-natured,
short-tempered, thick-skinned,
easy-going, hard-working, deceitful,
fair, shy, helpful, aggressive, reserved,
outgoing, cheerful.*

Positive Qualities

Negative Qualities

patient

boring

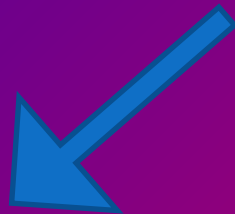


**Read the following descriptions of mannerisms
and match them with the adjectives below.**

***shy, sensitive, loving, inattentive, naughty,
aggressive, reserved***

1. Whenever Roger got involved in an argument, he would shout and become quite violent. -
2. Sue is often seen with her children holding them close, stroking their hair and speaking softly to them. -
3. When everybody else is busy studying, Sheila spends her time starrng at the ceiling, yawning and playing with her hair. -
.....
4. She blushes when she talks to people she does not know and her palms sweat. -
5. When little Tommy wants a new toy, he screams until his parents buy it for him. -
6. Whenever he received bad news, John would remain quite still and expressionless. -
7. When Sarah listens to sad music her eyes fill with tears. -
.....

Are You
or a Home
a Party Bird?
Animal



or
a home bird?

Outgoing

Sociable

Quiet

Popular

Shy

Friendly

Look at the title of the quiz.

What does it mean? Which

of the following adjectives

best describe a party

animal/ a home bird?

1. A classmate is having a party on Saturday.

What are you going to do?

- A** You're going to stay in. There's a great film on TV!
- B** You're going to go, but you're not crazy about the idea.
- C** You're definitely going to go. You can't wait!

2. You're going to a wedding reception and you don't know many people. How do you feel?

3. Your parents are going away this weekend. What are you going to do?

- A** You're going to rent DVDs and relax at home.
- B** A few close friends are coming over and you're having a barbecue in the garden.
- C** You're going dancing with friends.

4. Your friend calls to invite you out for coffee but you're comfortable on the sofa and a little bit tired. What are you doing to do?

- A** You're not moving. You really don't want to go out!
- B** You're going to invite your friend over.
You can have a coffee at home!
- C** You're going! The night is young.

Your Score

- **Mostly As:** Just because you like staying in, it doesn't mean you can't have company. Share your sofa with friends some time or go out for a cosy meal!
- **Mostly Bs:** You are friendly and popular, but sometimes you just want to stay at home. God for you! You don't always have to go to have a good time!
- **Mostly Cs:** You're the life and soul of the party and everyone's best friend. Just be careful not to tire yourself out. Why not relax at home once in a while or invite friends over to your house?

Listen to the dialog, fill in the missing words. Repeat the

phrases after the

announcer. Act out the dialog.

WPC Rix Was there anyone else in the cafe?

Man Yes. There were two waitresses and a 1) _____ other customers.

WPC Rix Can you remember that any of the customers were 2) _____?

Man Yes, I remember one young couple.

WPC Rix Can you describe them?

Man Yes. The woman was 3) _____ and thin.

WPC Rix What was her hair like?

Man She had long 4) _____ black hair.

WPC Rix What did the man look like?

Man He was of average height and average 5) _____ .

WPC Rix What was his hair like?

Man It was 6) _____ brown and very short.

WPC Rix Anything else?

Man He had a small 7) _____ and a scar on his cheek.

WPC Rix What sort of people were they?

Man They were very loud. He seemed very 8) _____ and aggressive.

WPC Rix What about the woman?

Man She was argumentative and she was very 9) _____ to the waitress.

WPC Rix Do you think they might have been thieves?

Man Well, they were not very nice, 10) _____ they, Sarah?

Woman I disagree. Just because they were a bit noisy and rude doesn't mean that they were thieves.

Repeat the phrases after the announcer. Act out the dialogue.

WPC Rix Was there anyone else in the cafe?

Man Yes. There were two waitresses and a few other customers.

WPC Rix Can you remember that any of the customers were like?

Man Yes, I remember one young couple.

WPC Rix Can you describe them?

Man Yes. The woman was tall and thin.

WPC Rix What was her hair like?

Man She had long straight black hair.

WPC Rix What did the man look like?

Man He was of average height and average build.

WPC Rix What was his hair like?

Man It was medium brown and very short.

WPC Rix Anything else?

Man He had a small moustache and a scar on his cheek.

WPC Rix What sort of people were they?

Man They were very loud. He seemed very arrogant and aggressive.

WPC Rix What about the woman?

Man She was argumentative and she was very rude to the waitress.

WPC Rix Do you think they might have been thieves?

Man Well, they were not very nice, were they, Sarah?

Woman I disagree. Just because they were a bit noisy and rude doesn't mean that they were thieves.

“My Next-Door Neighbour

Mavis has been my neighbour for six years. I first met her when she knocked on my door and asked for a spade because she hadn't yet unpacked hers. She had only moved in two days before.

Physically, Mavis looks younger than most other women in their late sixties. She is of average height, neither fat nor thin. Her plump round face is framed by a mass of wavy white hair and her sparkling eyes are always friendly. She wears casual, comfortable clothes. I don't think I have ever seen her in a perfectly ironed suit.

As for her personality, Mavis's most striking characteristic is her generosity. My house, as well as most of our neighbours', nearly always has a vase of flowers from her garden in the living room. Mavis is very good-natured and always has time for a chat. She is also patient. She hardly ever gets annoyed about anything except when children pick her favourite roses and lilies. However, she tends to be quite stubborn once she has made a decision, nothing can change her mind.

Being hardworking by nature Mavis always seems to be busy doing something. She spends a lot of her time looking after her garden and often participates in local flower shows. When she is not in her garden she is usually off somewhere raising money for one charity or another.

All in all, Mavis is the perfect next-door neighbour. Since the day she moved in, we have grown very close and I am very fond of her, even if I am woken up by the noise of her lawnmower early in the morning!

***Is the beauty in the eye of the
beholder ?***



Beauty



*Beauty is in the eye of the
beholder.*

*It means that beauty is
relative.*

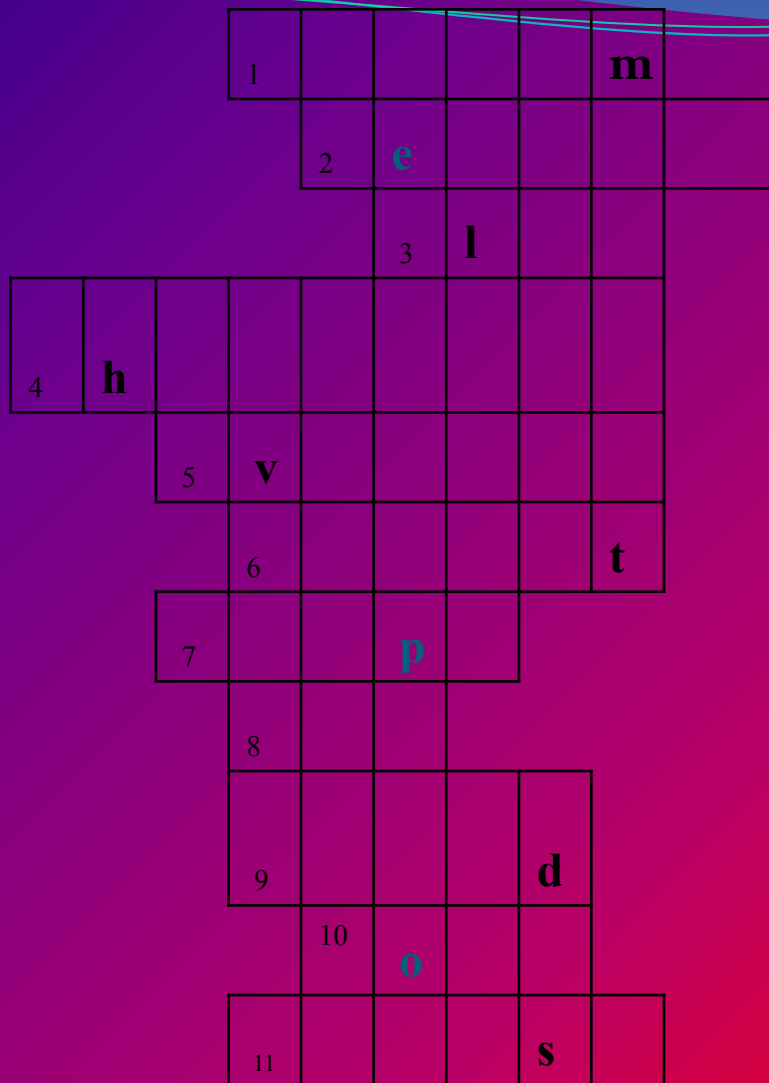
*Different people have
different ideas about what
is beautiful.*

***The perception of beauty changes
according to the period and the
people.***

***We need to be tolerant of others
who don't perceive beauty in
the same way.***

Beauty is external

***Interior beauty counts as much or
more.***



Conclusion

Sinkwein poem