



Stylistic lexicology

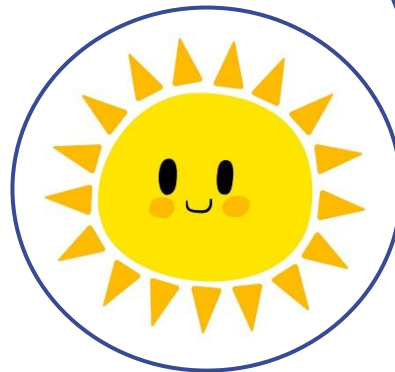
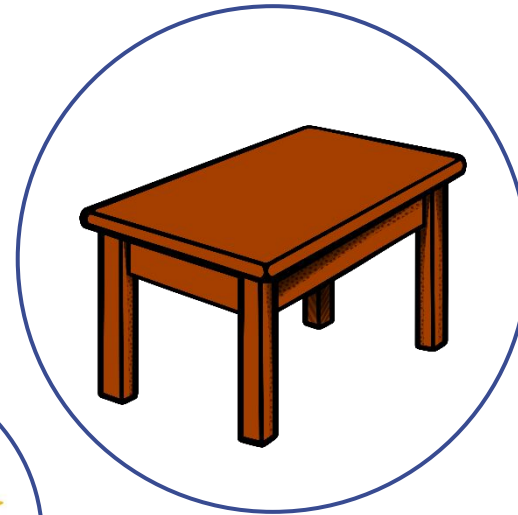
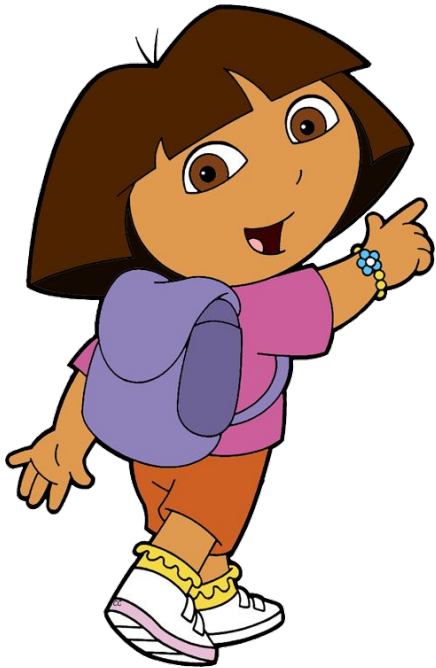
What is Stylistic Lexicology?

- ▶ Stylistic Lexicology studies the semantic structure of the word and the interrelation (or interplay) of the connotative and denotative meanings of the word, as well as the interrelation of the stylistic connotations of the word and the context.
- ▶ In other words, stylistic lexicology deals with words which make up people's lexicon.

Vocabulary

Neutral words

- ▶ Neutral words do not have stylistic connotations



Neutral words are characterized by the following points:

- ▶ They can be used in any style of speech without causing a special stylistic effect
- ▶ They can be used not only in written speech which abounds in literary words but also in colloquial speech without causing any stylistic effect
- ▶ They are generally devoid of any emotional meaning, unless special means are employed for this purpose

The literary vocabulary

- ▶ Common literary words are chiefly used in writing and in polished speech.



The literary vocabulary consists of the following groups of words:

- Terms
- Poetical words
- Archaic words
- Foreignisms and barbarisms
- Literary nonce-words or neologisms