

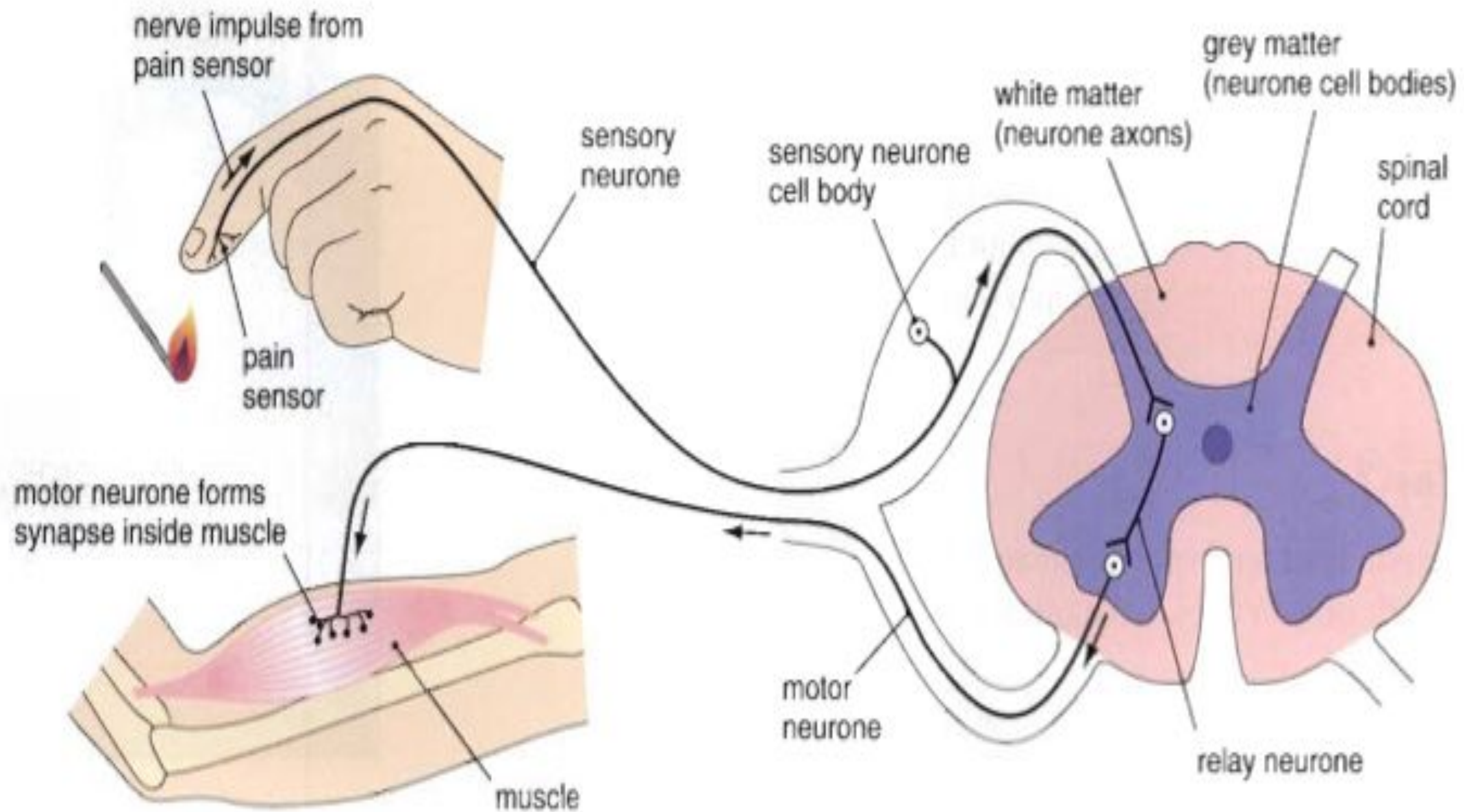
Reflex arc

- You will
- Research the reflex arc

Reflex

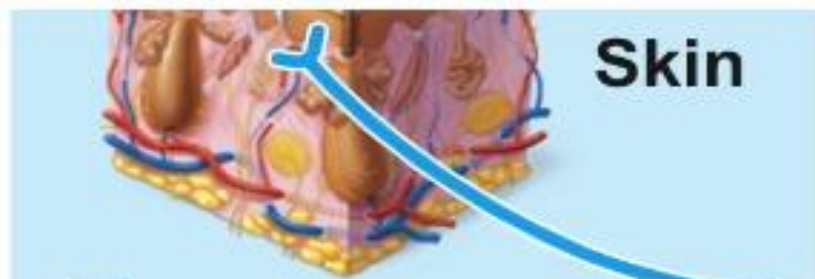
- Reflex is involuntary reaction to a stimulus. It is an automatic response.

Stimulus	Reflex
A delicious food	salivation
Spoiled food	nausea
An object reaching to your eye	blinking
When light becomes brighter	Pupils get smaller
Knee is hit by a hard substance	Knee jerk reflex



Reflex arc

- **Reflex arc** is when nerve signal move through neural pathway
- Components of a reflex arc are:
 - 1. **Receptor** which detects stimulus
 - 2. **Sensory neuron** carries information to the spinal cord
 - 3. **Motor neuron** carries information to an effector
 - 4. **Interneuron**, which is located in the spinal cord. It connects sensory neuron to motor neuron
 - 5. **Effector**, which is a muscle or other organ that produces the reflex action



Skin

① Receptor

② Sensory neuron

③ Integration center

④ Motor neuron

⑤ Effector

