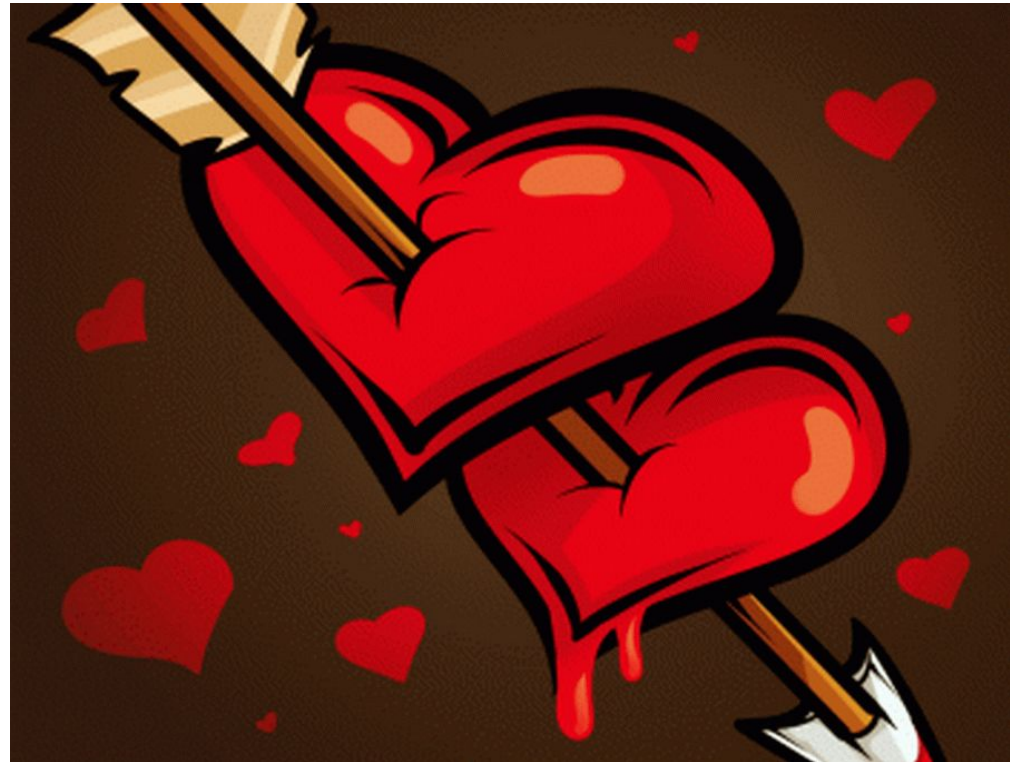


One hundred versus one



Round I

What is the most popular answer?



What love can be like? (6 answers)

- Mutual - 30
- First - 25
- Unhappy - 20
- Strong - 15
- Real - 5
- Passionate - 5

Round II

Vice versa. What is the least popular answer?



What or who can create a romantic atmosphere?

- Candles - 5
- Music - 5
- Flowers - 10
- Twilight - 15
- Love/beloved person - 25
- Wine - 30

Round III

Double Game



A girl was half an hour late for a date. Why?

- It took her a long time to make up - 60
- Overslept - 50
- Couldn't make up her mind what to wear - 40
- Got stuck in a traffic jam- 30
- Forgot - 10
- Broke the heel - 10

Super Game!

What is the most extraordinary place for a wedding?

Who can confess one's love?

Who or what appears in a couple's life after the wedding?

What do women lack of?

Who wouldn't you kiss when meeting?

What is the most extraordinary place for a wedding?

- Island – 30
- Beach - 25
- Under water - 20
- Space - 15
- Restaurant - 10
- Registry Office - 10



Who can confess one's love?

- Spouses - 30
- Girlfriend or boyfriend - 25
- Lovers - 20
- Children - 15
- Parents - 10
- Fans - 10



Who or what appears in a couple's life after the wedding?

- Children - 30
- Routine - 25
- Family - 20
- Sex - 15
- Problems - 10
- Flat - 10



What do women lack of?

- Money - 30
- Love - 25
- Men - 20
- Tenderness - 15
- Brain - 10
- Happiness - 10



Who wouldn't you kiss when meeting?

- Boss - 30
- Enemy- 25
- Unknown person - 20
- Nobody - 15
- Man- 10
- Mother-in-law - 10



Congratulations to the winners!

What words do you
associate with LOVE?

