

*There is no bad weather,
there are bad clothes.*



- **[w] weather, windy, winter**
- **[ə] there is, there are, clothes**
- **[æ] bad, bag, January**
- **[u] June, July, put on.**

Try to guess.

*There is no bad weather,
there are bad clothes*

*У природы нет плохой погоды,
есть плохая одежда.*





Dress right !



We should:

- ***Learn new words “Clothes”***
- ***Speak about seasons, weather***
- ***Present Simple and Present Continuous***
- ***Recommend how to dress right in different weather.***

blouse



skirt



high heels



dress



hat



shirt



boot



jeans



T-shirt



cap



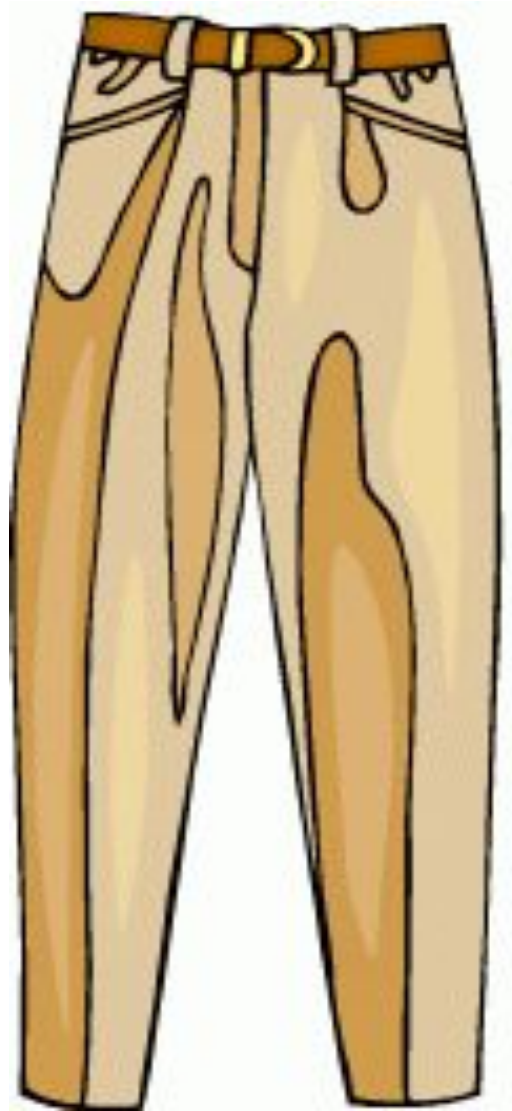
shorts



jacket



trousers



suit



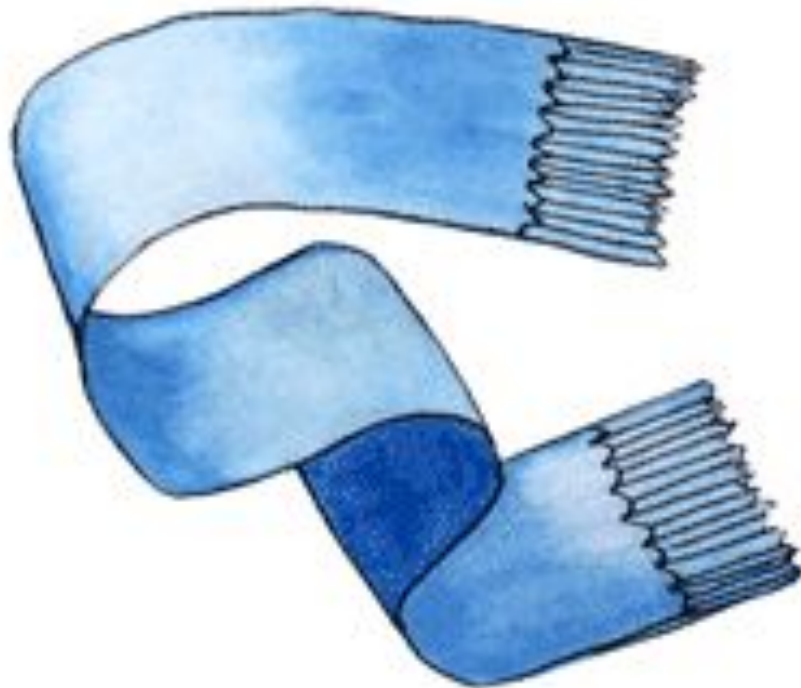
coat



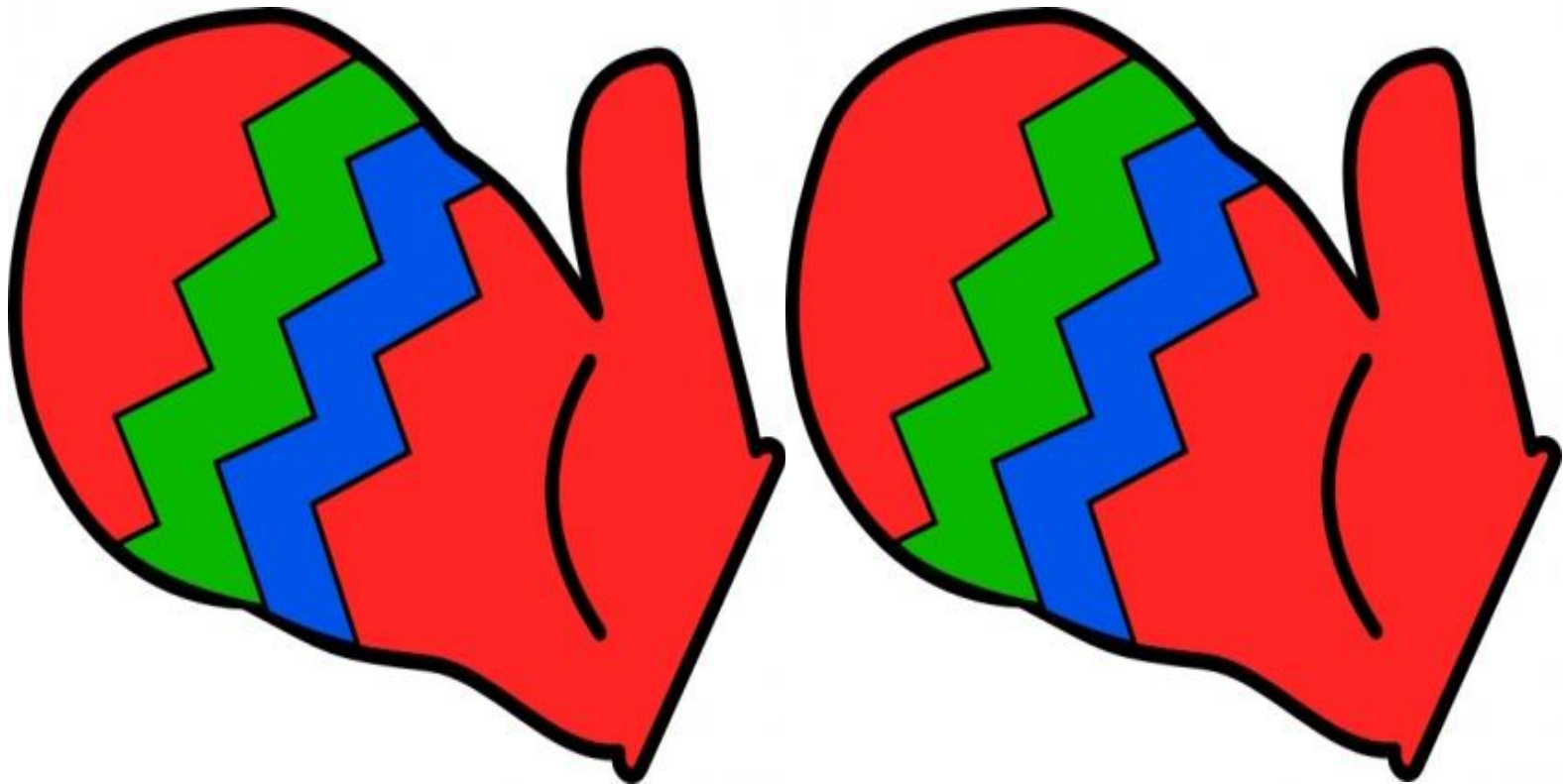
raincoat



scarf



mitten



gloves



socks



trainers



tie



sweater



What season is it?

- 1. It often rains. The leaves are falling. They are red and brown.*** **(autumn)**
- 2. It is hot and sunny. There are many flowers. They are red, yellow, pink and white.*** **(summer)**
- 3. It is warm. There are small green leaves on the trees. The birds are singing.*** **(spring)**
- 4. It is very cold. It often snows. The ground and trees are white*** **(winter)**

It is rainy





It is snowy



It is cloudy

A foggy scene of the River Thames in London. In the background, the Houses of Parliament and Big Ben are visible through the mist. In the foreground, a bridge with ornate arches and lit-up lamp posts spans the river. A single bird is seen flying in the sky above the text.

It is foggy

It is sunny



A woman with long blonde hair, wearing a black coat and carrying a black bag, is walking on a wet city street. She is holding a black umbrella that is being blown inside out by a strong wind. Her hair is blowing in the wind, and she has a pained or frustrated expression. In the background, another person is walking, and the street is wet with reflections of buildings and vehicles. The overall scene conveys a sense of struggle against the weather.

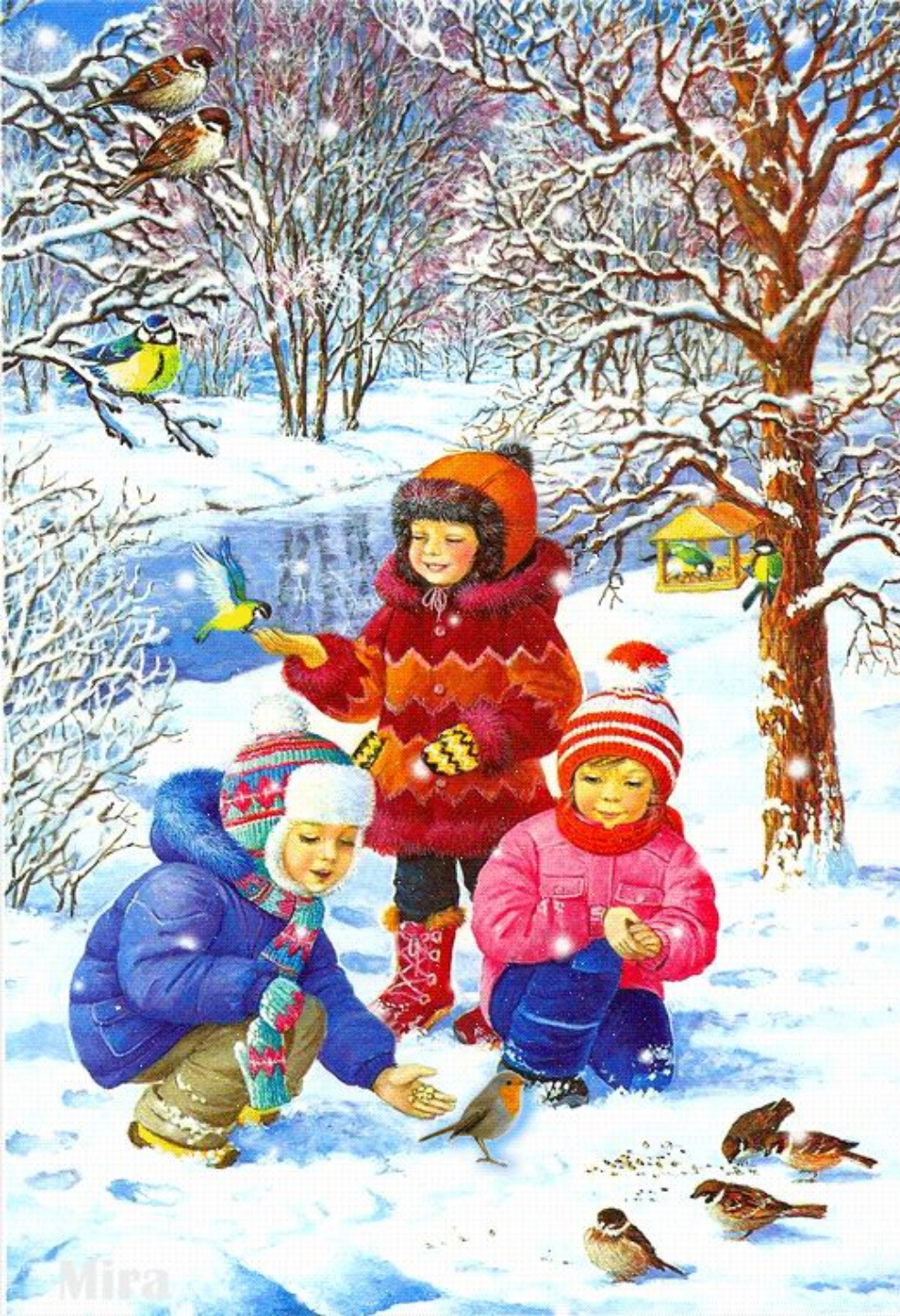
It is windy



It is hot

It is cold





□ What season is it?

□ **What** months are there in
winter?

□ What is the weather like in
winter?



□ What season is it?

□ What months are there in
spring?



□ What is the weather like in
spring?

□ What season is it?

□ What months are there in
summer?

□ What is the weather like in
summer?



□ What season is it?

□ What months are there in

autumn?

□ What is the weather like in

autumn?





Which clothes are

- for warm weather



- for cold weather





Complete the sentences.

1. *When it's cold, we put on*



2. *When it's warm, we put on*

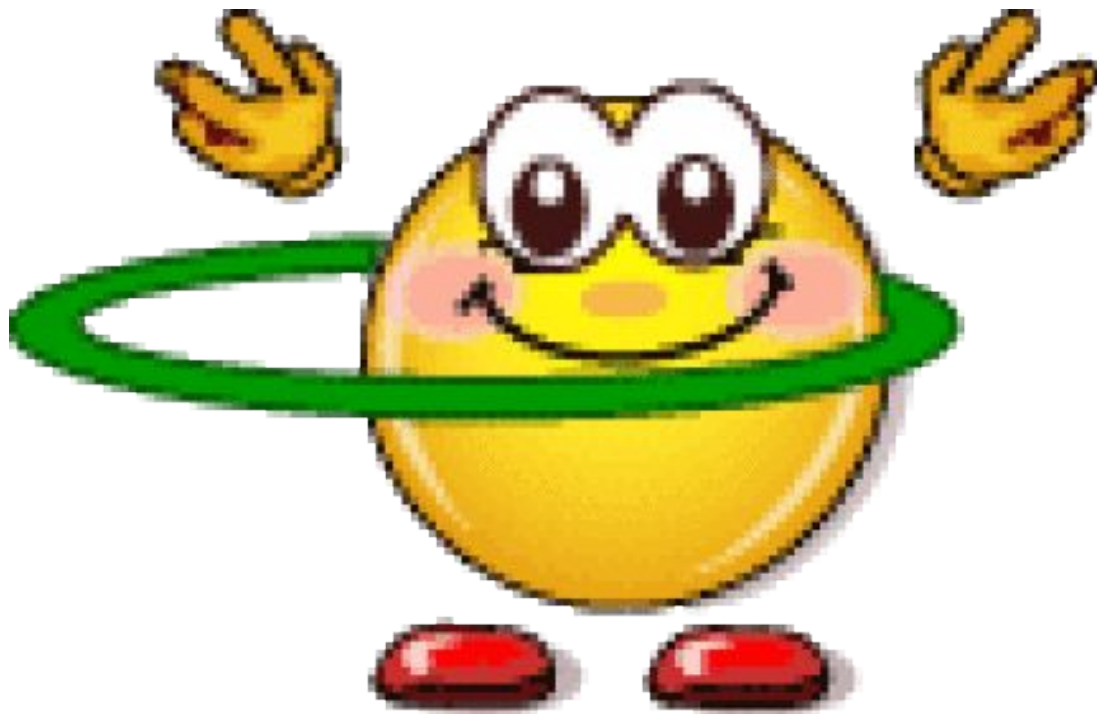


Работа в парax

P1: It's raining.

P2: Put on your

Let's do some exercises



Describe the pictures



The men are wearing

...



The girl is wearing

...

Describe the pictures



**The boy is
wearing..**



**The girl is wearing
...**

Describe the pictures



The women are wearing .. The girl is wearing..



HAVE A
NICE
DAY

