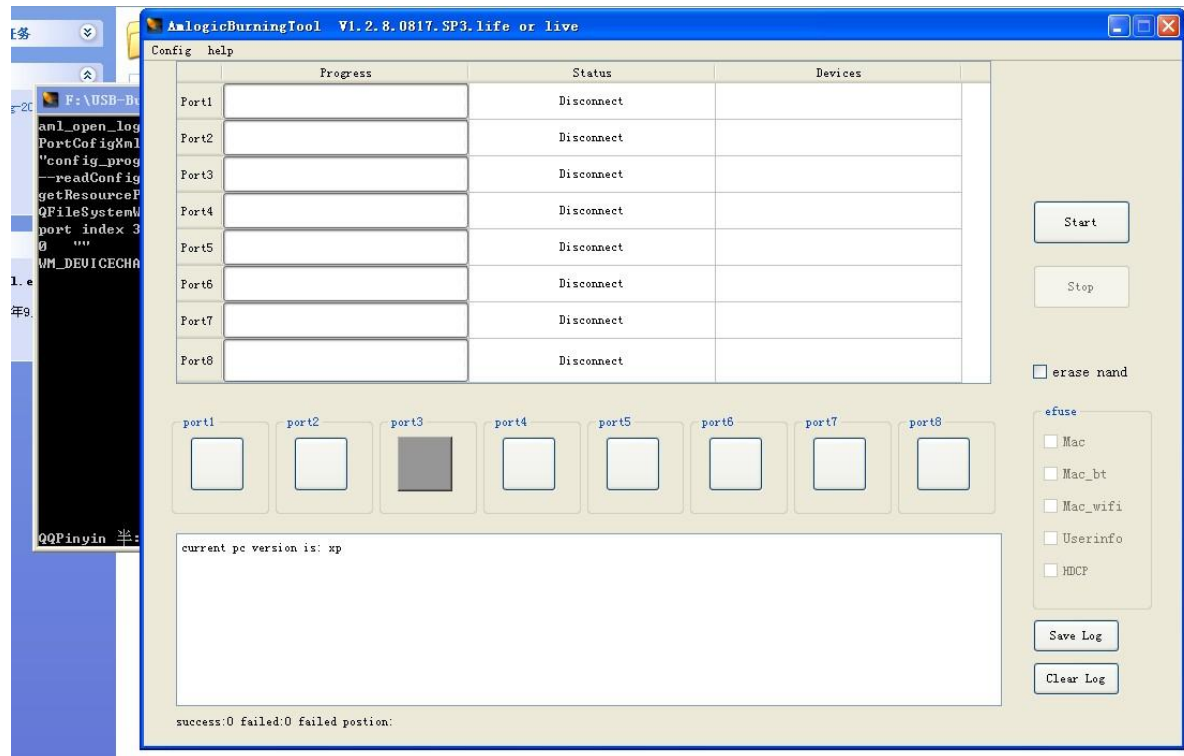


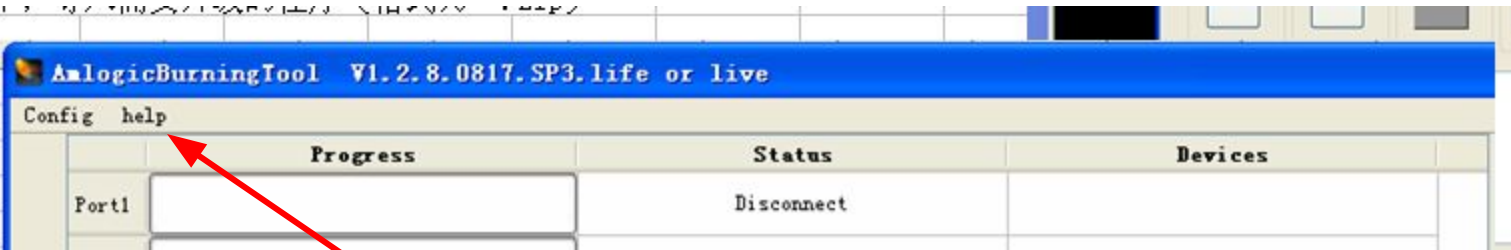
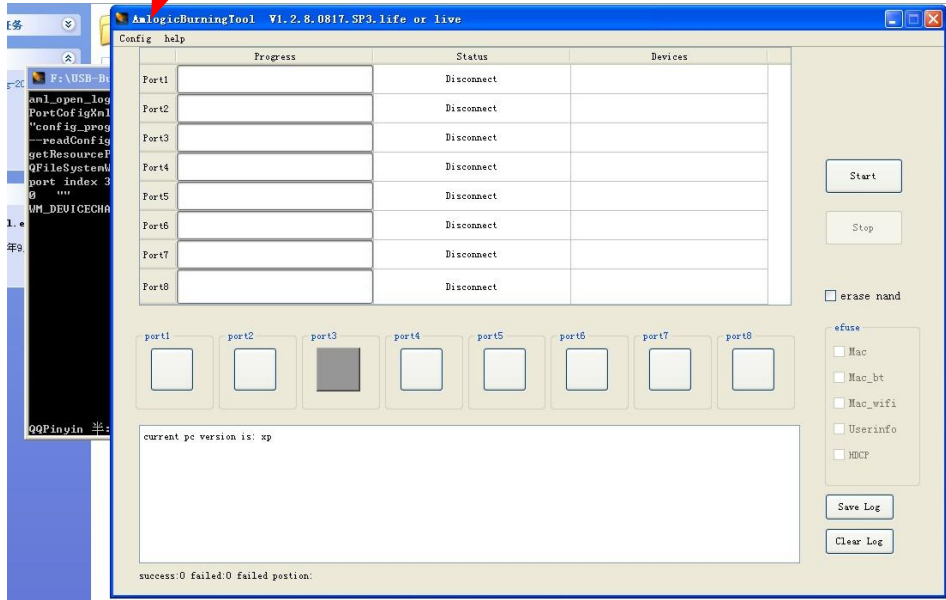


1. Click the icon to open it

2.. The below screen window will appear.



3. Click “ config” and then choose the first one, and then leading-in the file named “\*\* .zip”



To click “ help” can choose the language of the firmware tool showing

4. Under the power off model ,Connect the MID to computer with USB cable,  
Press the power key continuously until the below information will appear.  
And then click “ start” . Few minus later , the firmware will succed ,and the port will turn green.

	Progress	Status	Devices
Port1		Disconnect	
Port2		Disconnect	
<b>Port3</b>		Connect	Standard Enhanced PCI to USB Host Controller (RootHub)-port3

