

A photograph of the Brooklyn Bridge, showing its massive stone towers and intricate steel suspension system. The bridge spans a body of water, with a city skyline visible in the background under a clear blue sky. The title "Brooklyn Bridge" is overlaid in a light blue serif font.

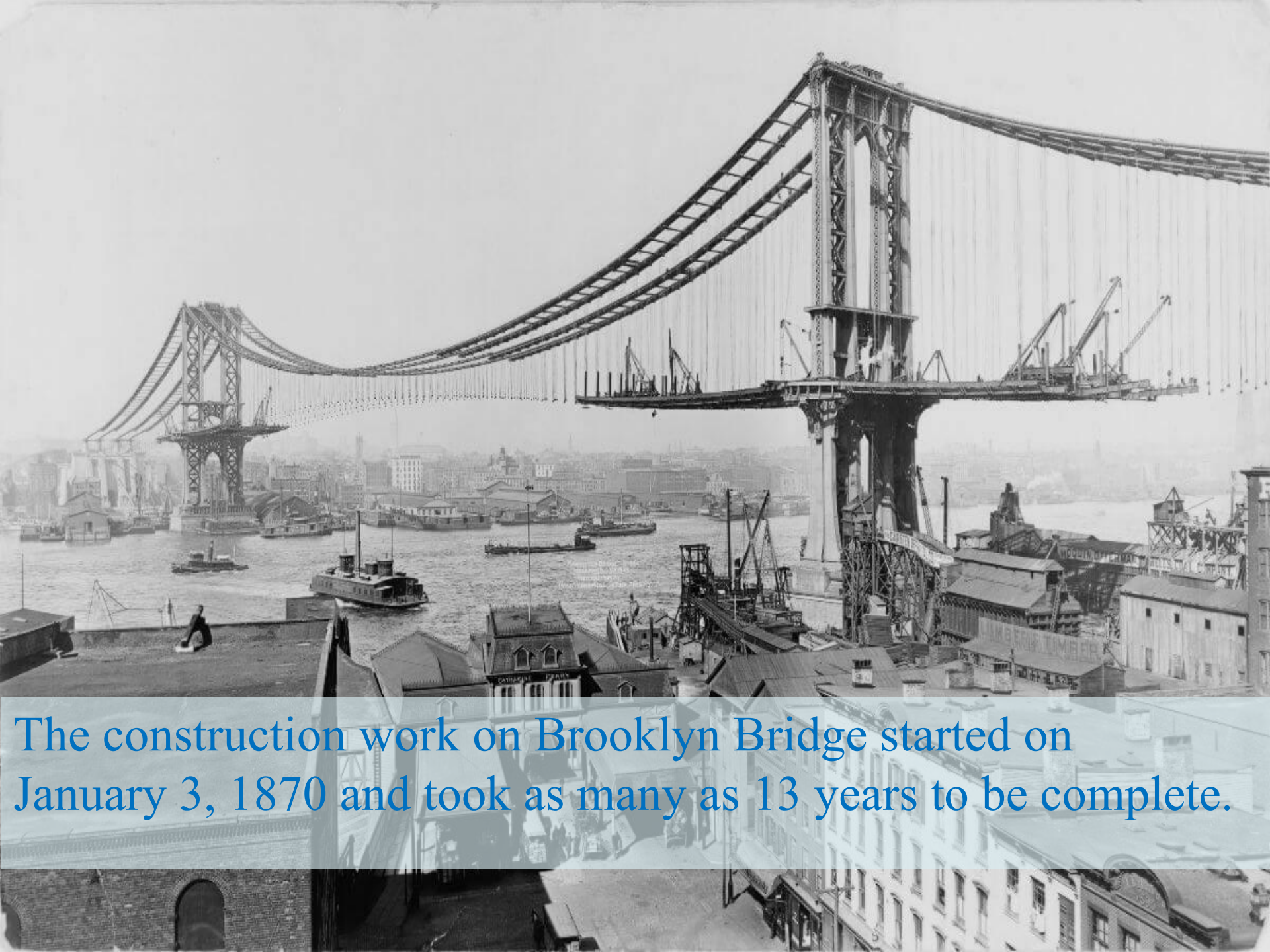
Brooklyn Bridge

The Brooklyn Bridge is a suspension bridge in New York City and is one of the oldest bridges in the United States. Completed in 1883, it connects the boroughs['bʌr.əs] of Manhattan and Brooklyn.

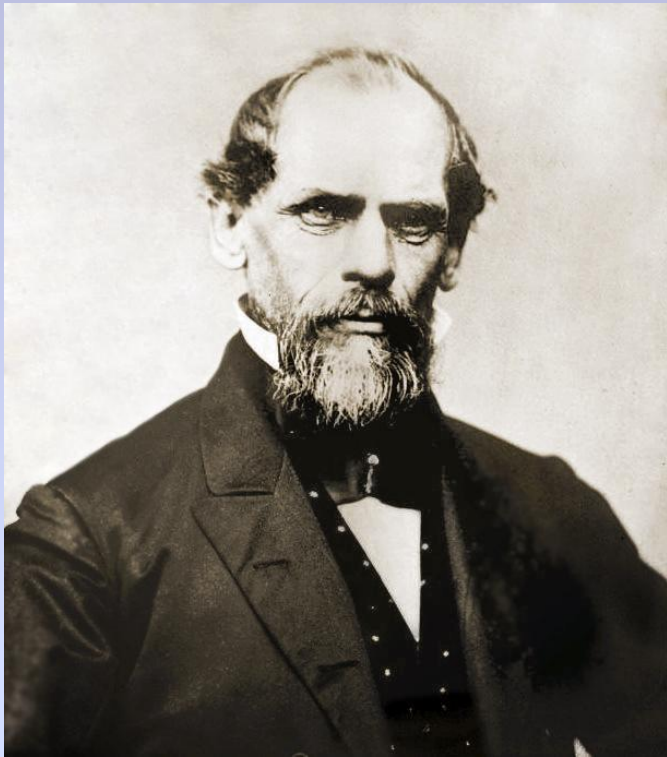


A composite image featuring the Brooklyn Bridge. The top half shows a close-up of the massive steel-wire suspension cables against a cloudy sky. The bottom half shows a view from the bridge deck looking towards the Manhattan skyline, with several tall skyscrapers visible. A group of people is walking on the right side of the bridge deck.

Brooklyn Bridge is the first steel-wire suspension bridge in the world. The length of the bridge is 1825 meters



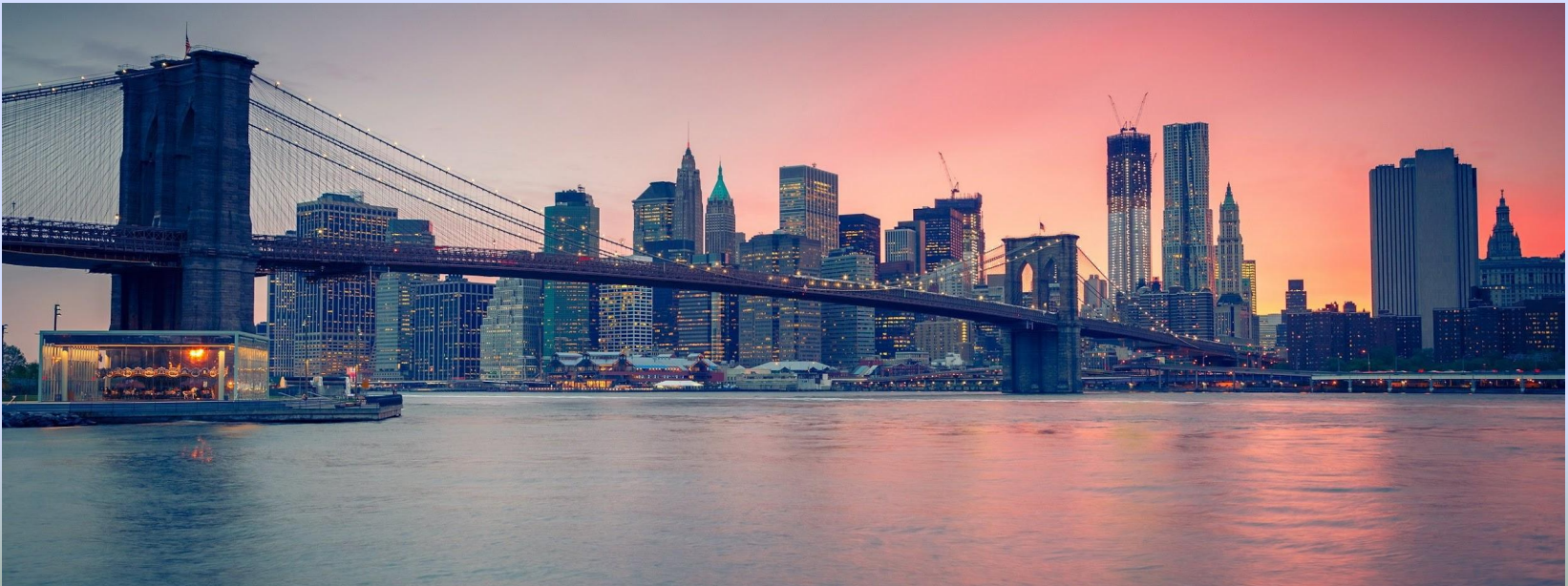
The construction work on Brooklyn Bridge started on January 3, 1870 and took as many as 13 years to be complete.

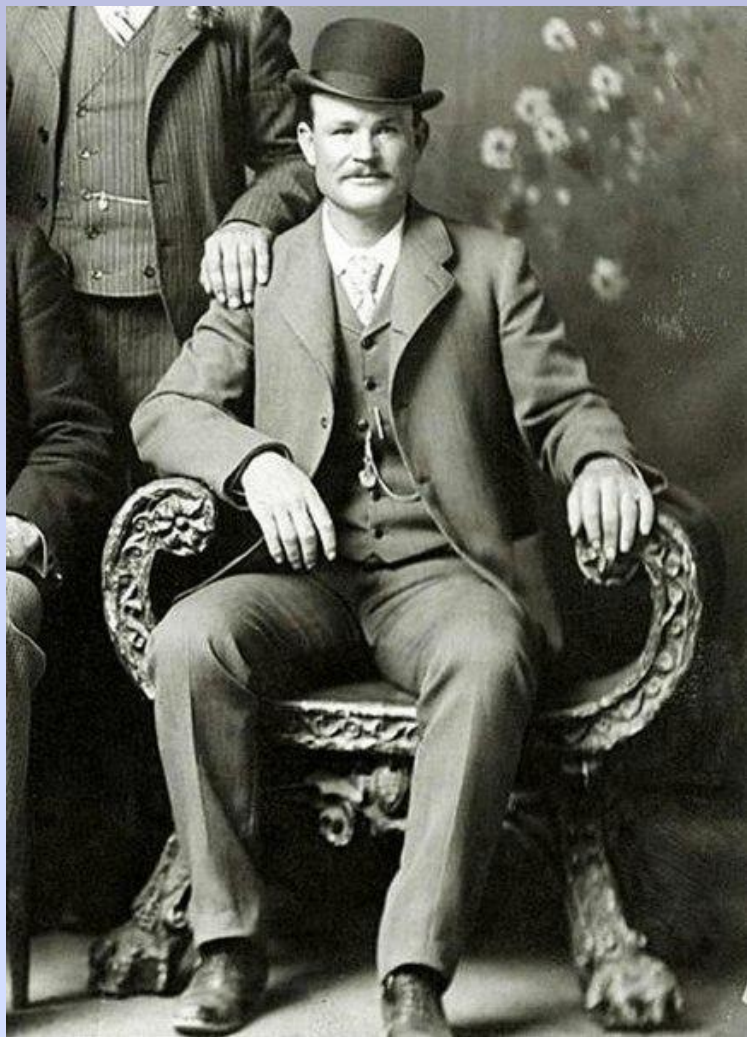


Brooklyn Bridge was designed by John Augustus Roebling. John Roebling started design work in 1867. He died during construction on July 22, 1869

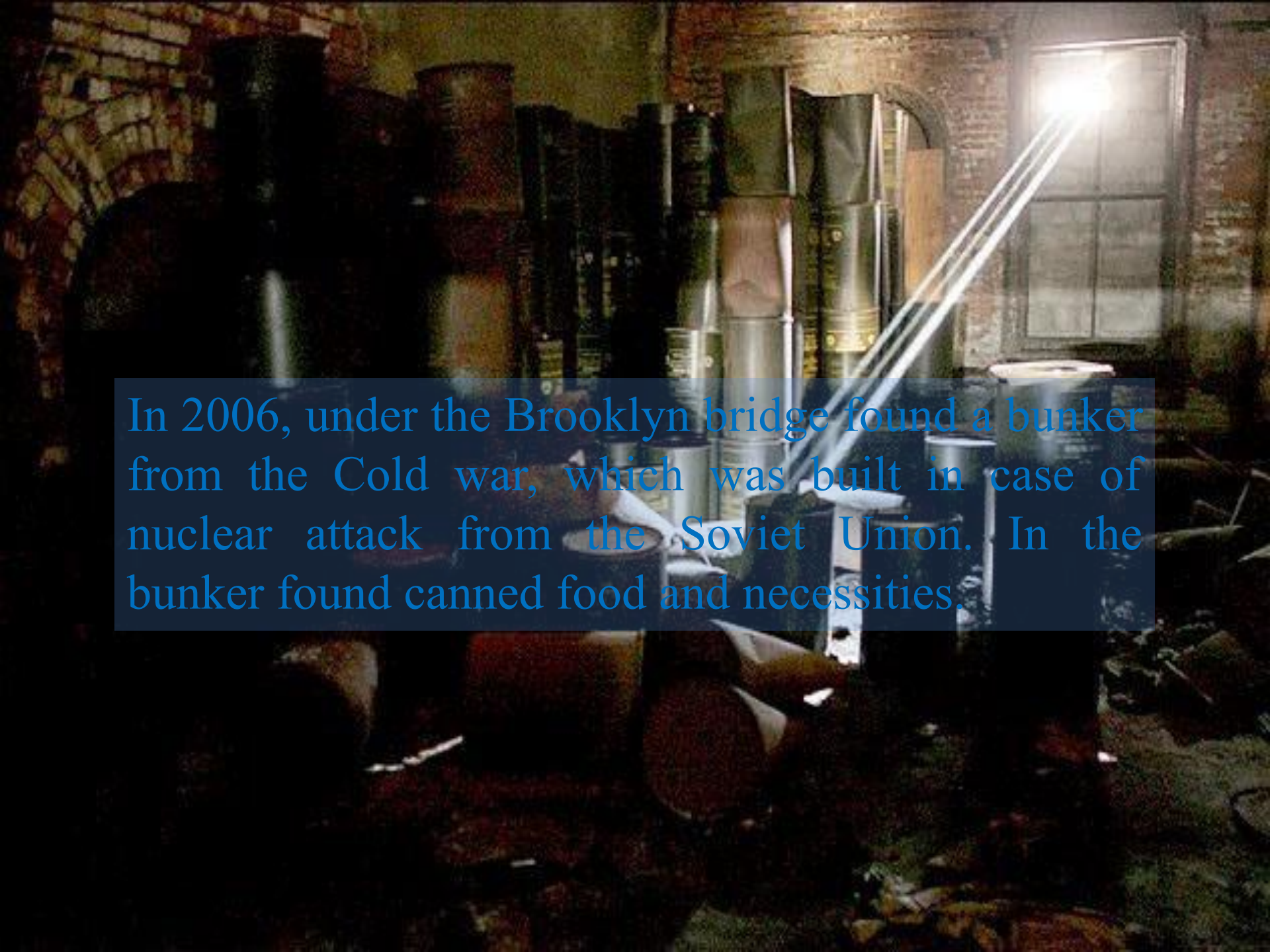
...It is said that during the construction of Brooklyn Bridge, as many as 27 people died.

Washington Augustus
Roebeling (1837 – 1926)
became assistant engineer
on the Brooklyn Bridge in
1868, and was named chief
engineer after his father's
death.

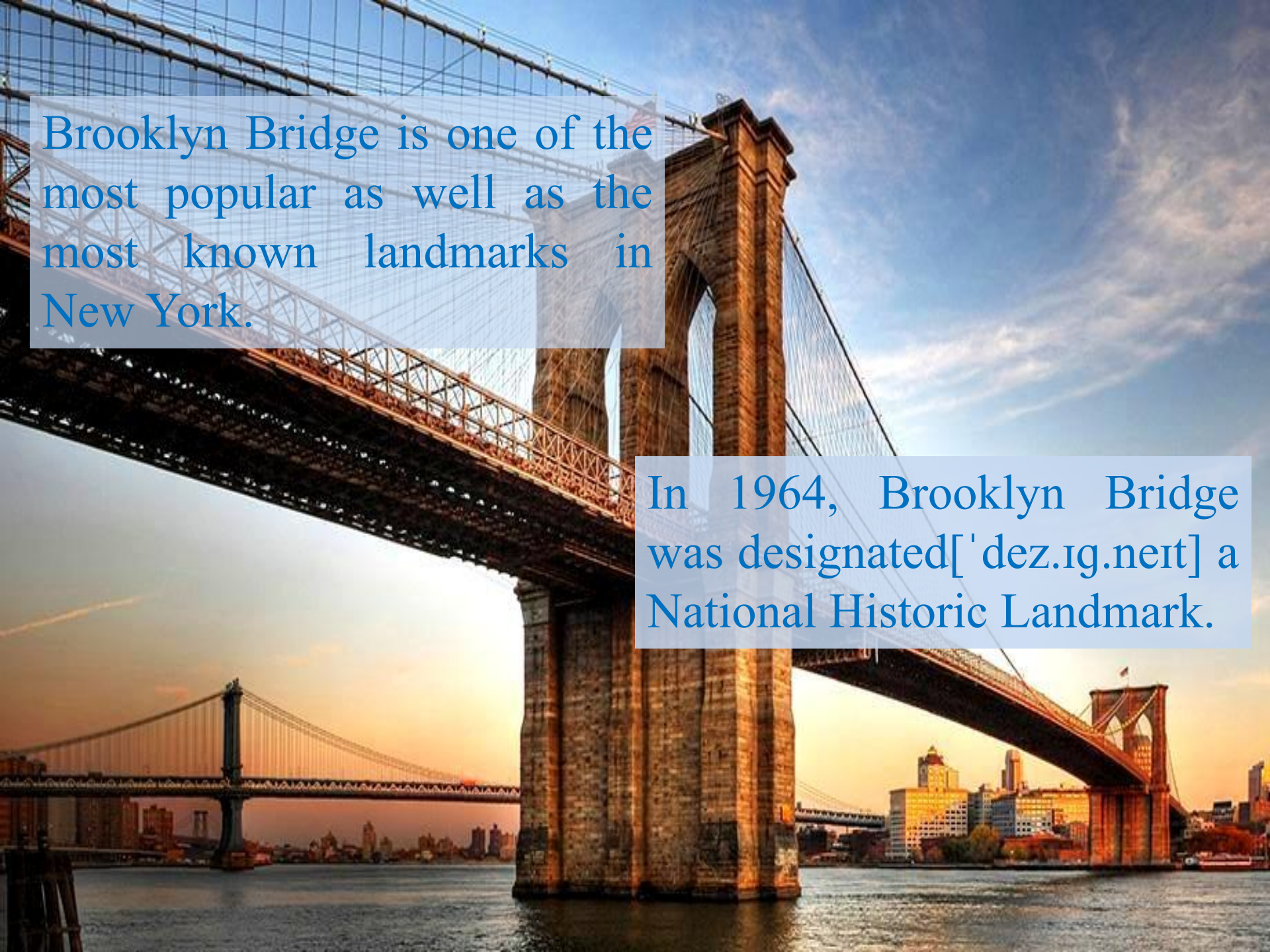




In 1901, George C. Parker was sentenced to two years in jail for 'selling' the bridge to a tourist.

The image shows a dimly lit, underground space, likely a bunker. The walls are made of brick, and the floor is covered with debris and stacks of supplies. Numerous cans of food are visible, some stacked high. A bright light source, possibly a window or a powerful lamp, is located in the upper right corner, casting a strong beam of light across the scene. The overall atmosphere is one of a hidden, long-abandoned storage area.

In 2006, under the Brooklyn bridge found a bunker from the Cold war, which was built in case of nuclear attack from the Soviet Union. In the bunker found canned food and necessities.

A photograph of the Brooklyn Bridge at sunset. The bridge's massive stone towers and steel cables are silhouetted against a warm, orange and yellow sky. The Manhattan skyline is visible in the background across the water.

Brooklyn Bridge is one of the most popular as well as the most known landmarks in New York.

In 1964, Brooklyn Bridge was designated a National Historic Landmark.