

# 1. USB Driver Installation to Downloading - INFINEON

## Whole Process

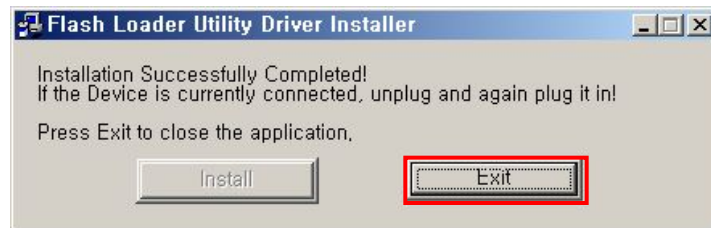
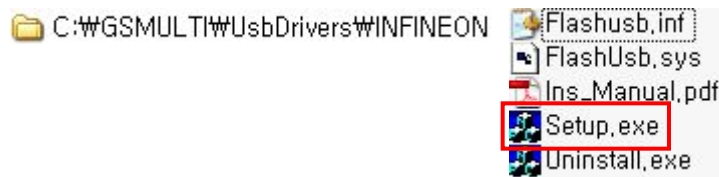
**USB Driver  
Installation  
to Download**

**Device Detection**

**USB Port Mapping**

**Configuration  
to Download**

1. Run "Setup.exe" for Installation Infineon usb driver.
2. Click Install button.
3. Click Exit button after installation completion.



# 1. USB Driver Installation to Download - NEPTUNE

## Whole Process

USB Driver  
Installation  
to Download

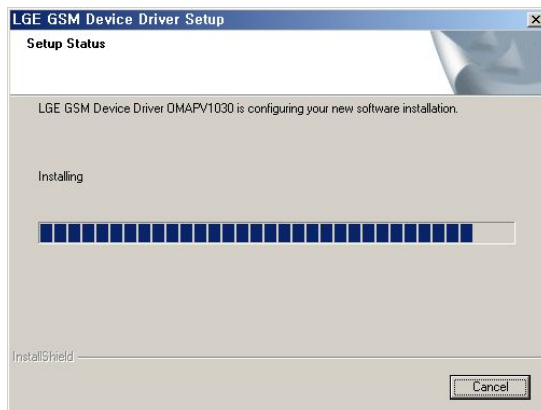
Device Detection

USB Port Mapping

Configuration  
to Download

1. Run "LGE\_GSM\_Device\_Driver\_OMAPV1030\_1.0" for Installation Infineon usb driver.

LGE\_GSM\_Device\_Driver\_OMAPV1030\_1.0.exe



## 2. Device Detection

### Whole Process

**USB Driver  
Installation  
to Download**

**Device Detection**

**USB Port Mapping**

**Configuration  
to Download**

1. Connect cable within the device.
2. Windows will pop-up Found new hardware wizard and detect the new usb device.
3. Check “Install the software automatically (Recommended)” button, install driver for the device. (or set specific location.)
4. In case of Infineon, “Flash Loader utility” will be installed.  
In case of Neptune, “LGE GSM Device OMAPV1030” will be installed.
5. If you have several usb ports for usb download, you have to repeat installation from No. 1 to No. 3 for each the usb port.

Eg. In case of Infineon, “Flash Loader utility” will be installed as shown below.



### 3. USB Port Mapping

#### Whole Process

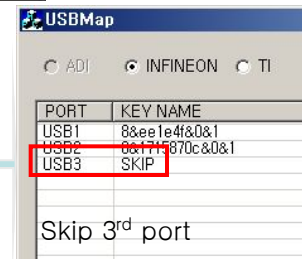
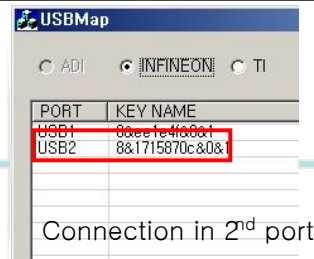
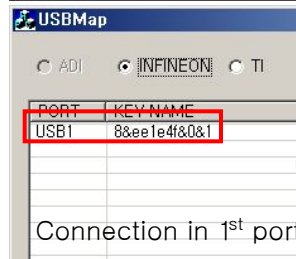
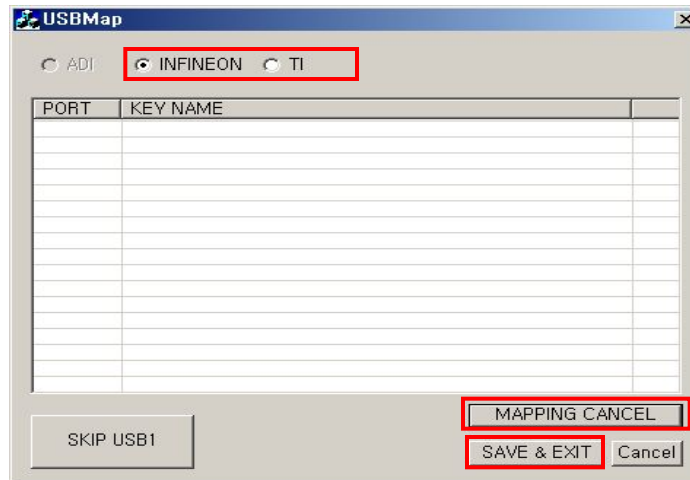
USB Driver  
Installation  
to Download

Device Detection

USB Port Mapping

Configuration  
to Download

1. Run USB Map Program and check solution, click mapping start.
2. Connect the usb or nexus cable with the device in order of port number.
3. If you have the disable port, click “SKIP” button.
4. After mapping is completed, click “Save & Exit” button.



## 4. Configuration to Download

### Whole Process

USB Driver  
Installation  
to Download

Device Detection

USB Port Mapping

Configuration  
to Download

1. Run GSMULTI after version 3.0.
2. Select “Model DLL” file.
3. If the model is supported usb download, USB button will be appeared.
4. If the model is supported both interface, you can choice one.

