

# Step 26

---

*Презентация подготовлена  
учителем МБОУ СОШ п.  
Солидарность Елецкого района  
Липецкой области  
Зуботаревой Еленой Николаевной*

*2014г.*



Good morning, good morning,  
good morning to you  
good morning, good morning,  
I am glad to see you.





**Queen Liz is not sad, Queen Liz is...**



**It is not a bad car, it is a...**



**It is not a wood, it is  
a....**



**It is not a cock, it is  
a.....**

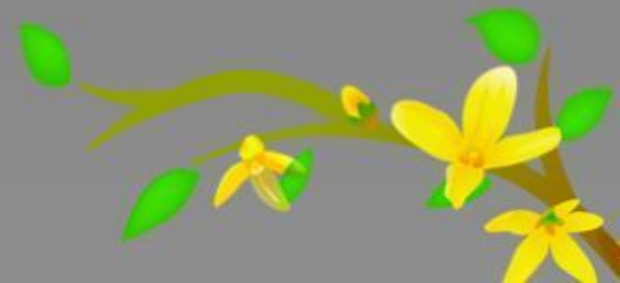




**It is not a bee, it is an....**



**It is not a green sock, it is  
a.....**





Dolly

**It is not sheep Polly,  
it is sheep ....**



**It is not a little tree,  
it is a.....**

*Найди в каждой строчке лишнее слово*

**1) good, happy, lorry, funny**

**2) horse, sheep, bee, bench**

**3) hill, wood, book, park**

**4) green, sad, red, black**

**5) street, car, van, lorry**

**6) box, book, black, dog**

## *Прочитай слова*

[ kw ] **q**ueen, **q**uilt

[ a:] st**a**r, p**a**rk, c**a**r, f**a**rm

[ ɔ:] p**o**rt, h**o**rse, fl**o**or, d**o**or

[ tʃ ] **ch**erry, **ch**ick, **ch**imp, m**at**ch

[ k ] cl**o**ck, d**u**ck, s**o**ck, c**o**ck

[ ʃ ] **sh**op, f**ish**, d**ish**, **sh**elf

[ u ] g**oo**d, w**oo**d, c**oo**k, b**oo**k

[ i: ] gr**ee**n, s**ee**, b**ee**, sh**ee**p



Прочитай текст. Послушай, что говорит о ферме господин Кларк. О чем он забыл сказать?



It is a farm. It is a big farm. I can see a red horse and a black sheep. I can see a cat and a dog. I can see a cock and a chick. I can see a green tree and a bench. I can see a car and a van.

*Составь рифмовку, используя слова в рамке*

car, door, hook

What is it?	It's a big book.
What is it?	It's a little.....
What is it?	It's a red star.
What is it?	It's a good.....
What is it?	It's a green.....
What is it?	It's a black floor.

Выбери **What** или **Who** и закончи вопросы

1) \_\_\_\_\_ is it? – It is a horse.

1) \_\_\_\_\_ is it? – It is a door.

1) \_\_\_\_\_ is it? – It is Barney Scott.

1) \_\_\_\_\_ is it? – It is Queen Anne.

1) \_\_\_\_\_ is it? – It is a little funny chimp.

1) \_\_\_\_\_ is it? – It is a street.

1) \_\_\_\_\_ is it? – It is Sally Clark.

1) \_\_\_\_\_ is it? – It is Charley Sheen.

Скажи, где тролль ошибся, отвечая на вопросы эльфа. Исправь его.



**Образец: *Is it a bench? - Yes, it is.***  
***No, it isn't . It is a shelf.***



*1) Is it a chimp? – No, it isn't.*

*2) Is it a queen? - Yes, it is.*

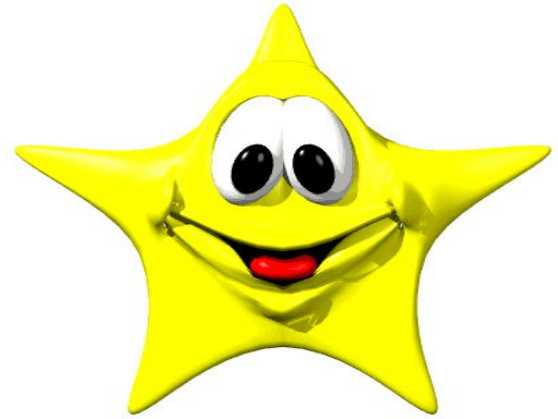


*3) Is it a quilt? – No, it isn't.*





*1)Is it a star? - Yes, it is.*



*2)Is it a car? - Yes, it is.*



*3)Is it a horse? –Yes, it is.*





***Домашнее задание:***

**Step 27, подготовка к контр. раб.**



**Good bye! See you!**

