



London & Its Sights

London



London is the capital of Great Britain.

The Thames



The Thames



It stands on the River Thames.

London



The city is very old.

London



It is more than two thousand years old.

London's Sights



There are many sights in London.

Trafalgar Square



Buckingham Palace



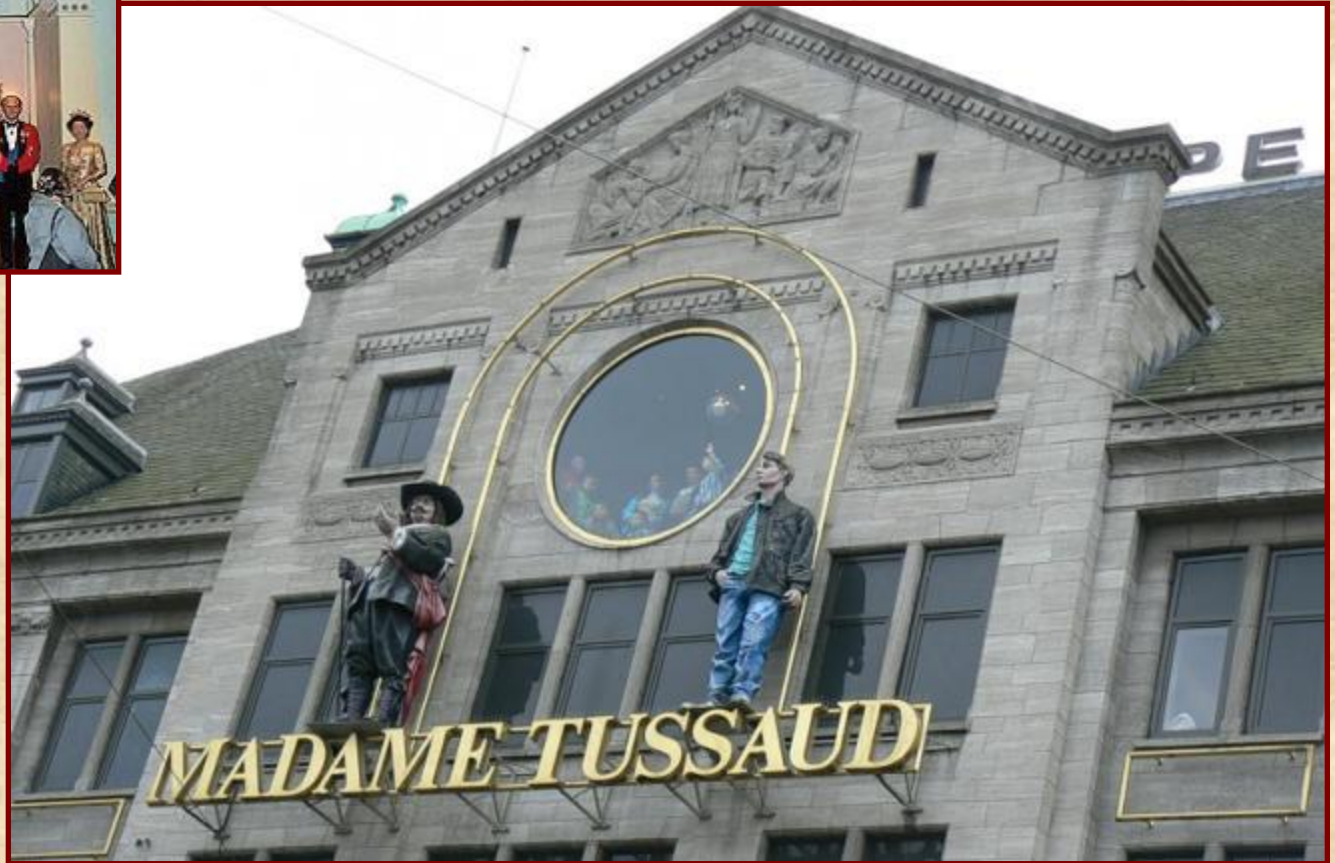
The Houses of Parliament



The Tower of London



Madame Tussaud's Museum



Trafalgar Square



Trafalgar Square is the centre of London.

Buckingham Palace



Buckingham Palace is the London home of the Queen.

The Houses of Parliament



The Houses of Parliament
is the seat of the British government.

The Tower of London



The Tower of London was a fortress, a castle, a prison and a zoo.

The Tower of London



Now it is a museum.

Madame Tussaud's Museum



Madame Tussaud's
is a famous museum of wax figures.

Four parts of London

The City



Westminster



The West End



The East End



The City



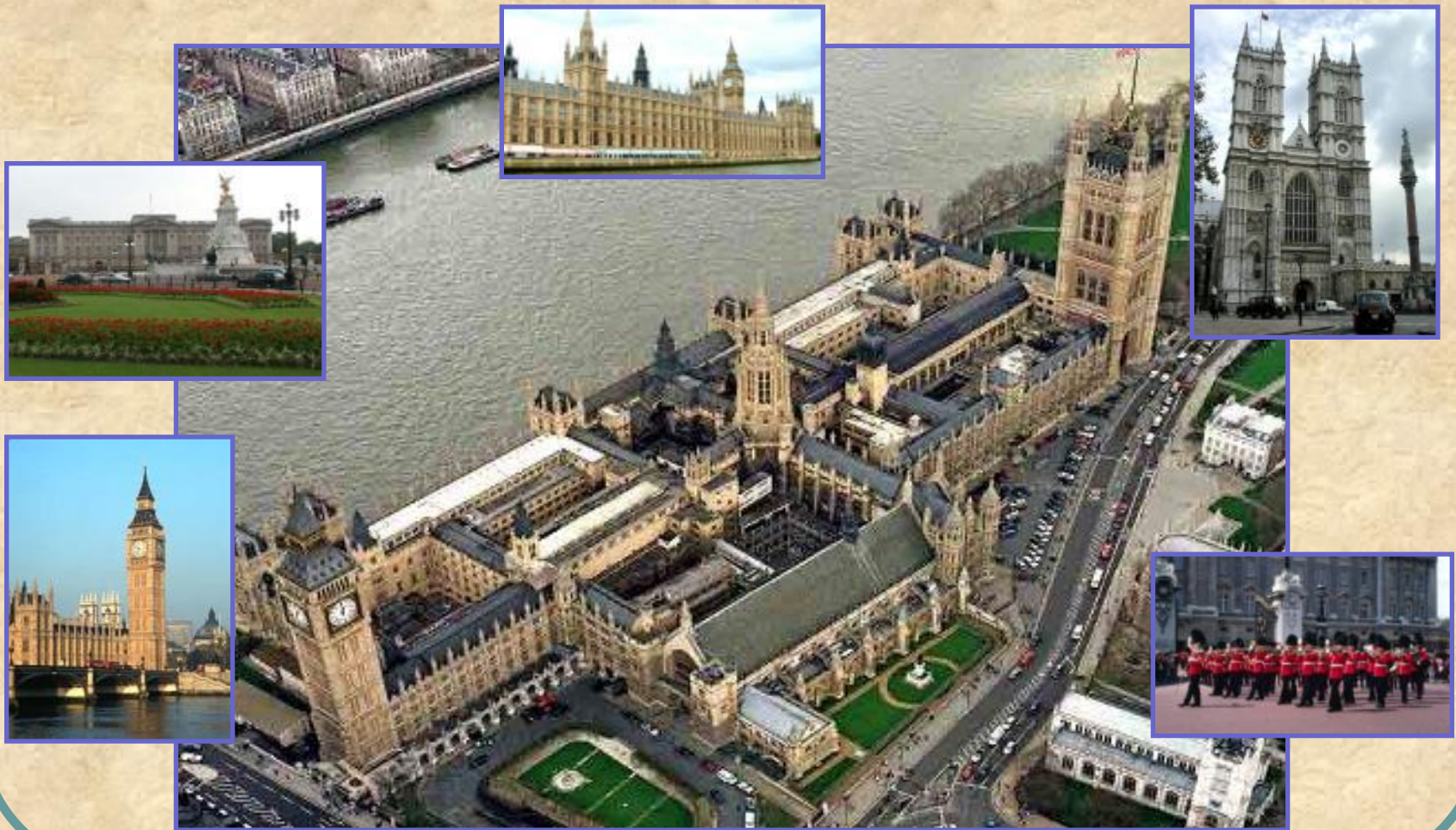
St. Paul's Cathedral



Tower Bridge



Westminster



Westminster Abbey



Big Ben



The West End



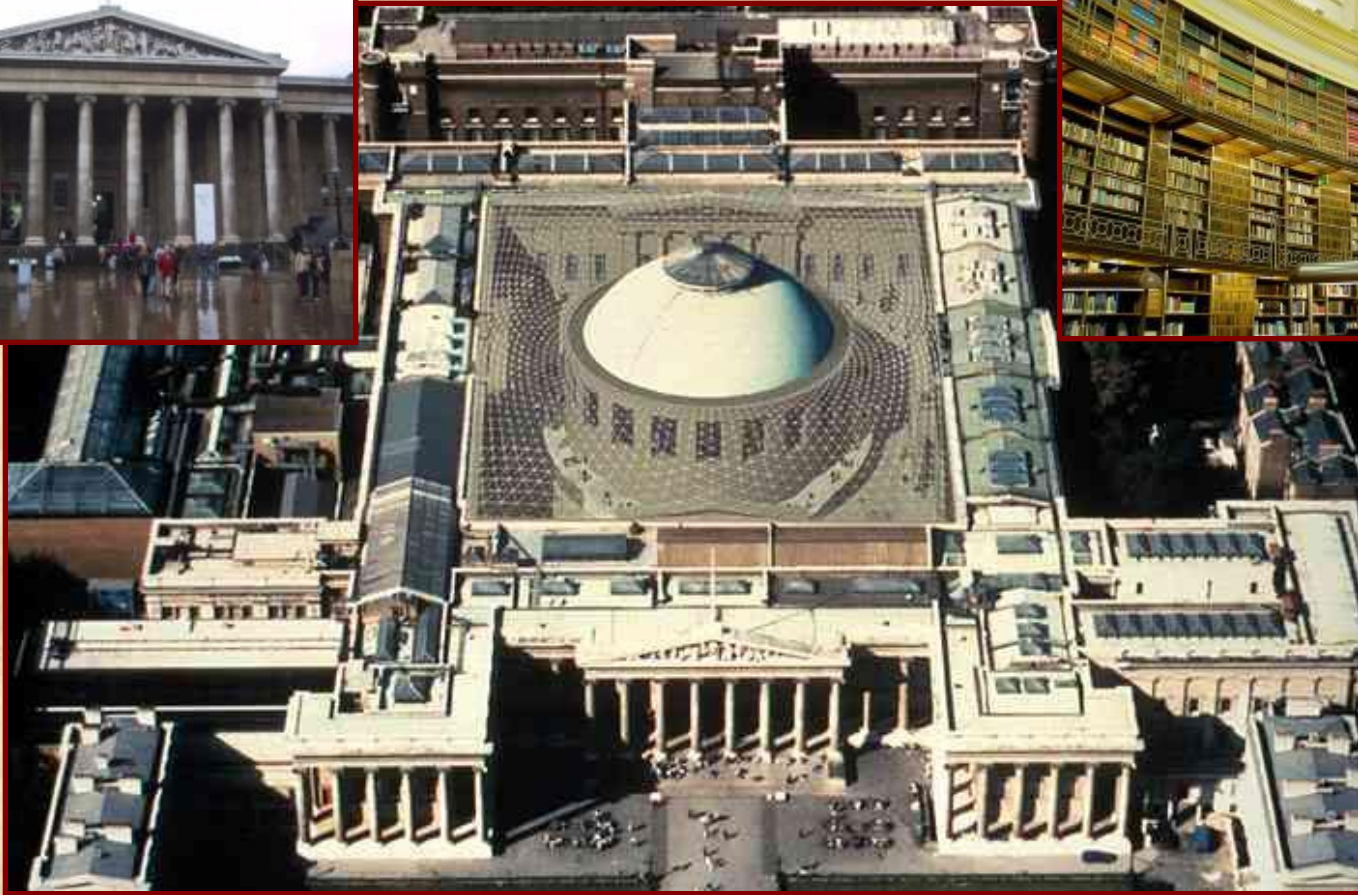
Piccadilly Circus



Oxford Street



The British Museum



The National Gallery



The Sherlock Holmes Museum



Parks of the West End

Hyde Park



Regent's Park



St. James's Park



Kensington Gardens



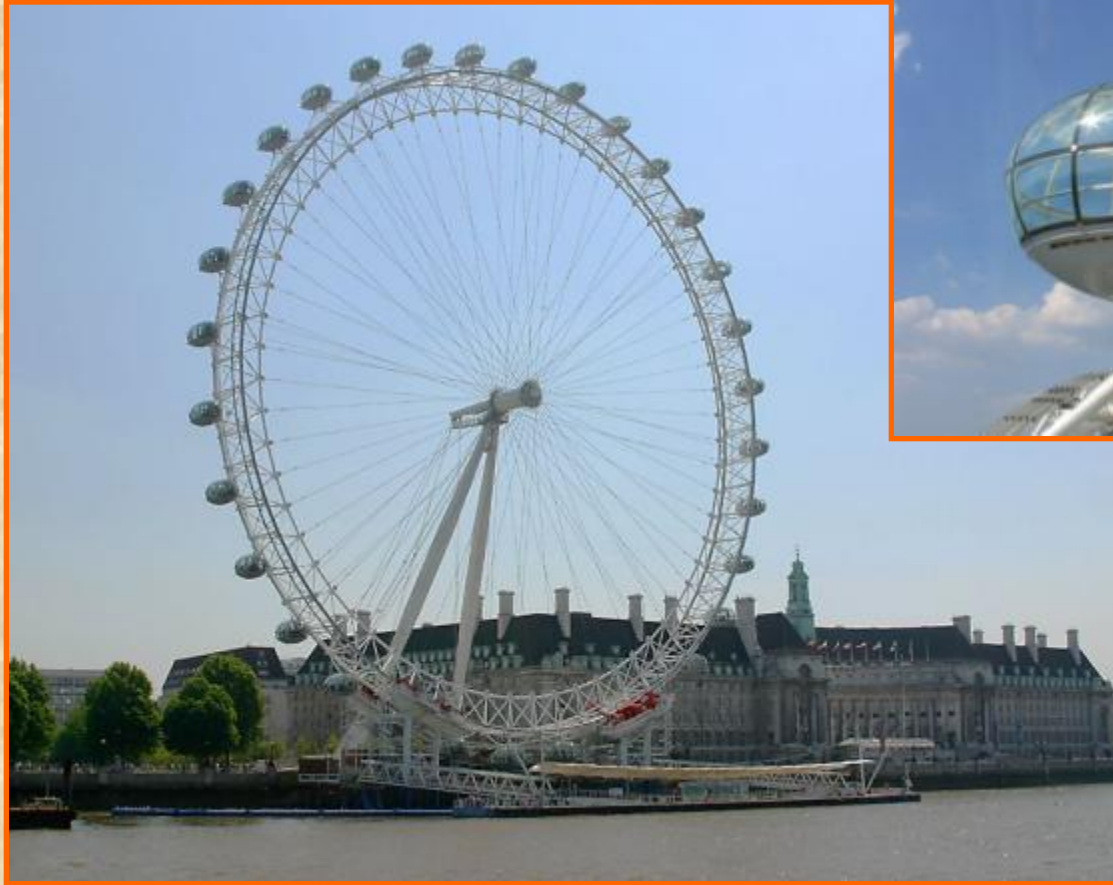
The East End



The Transport of London



The London Eye



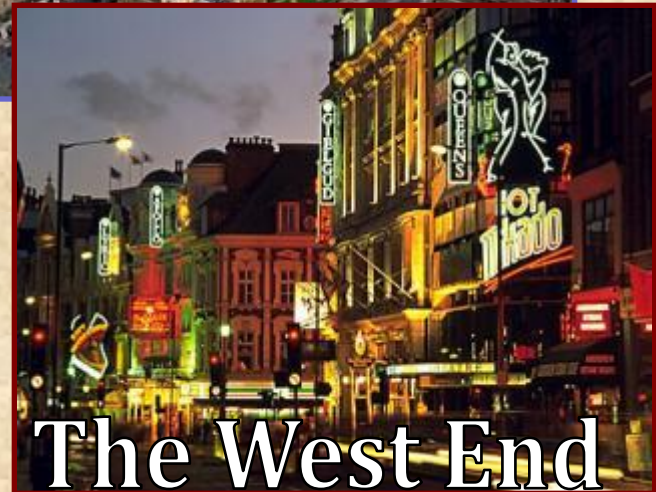
Name the parts of London



Westminster



The East End



The West End

Name the sights of London

1



2



3



4



5



6



Name the sights of London

7



8



9



10



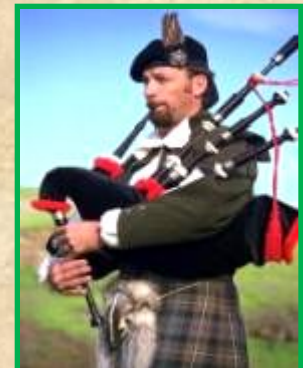
11



12



What is not in London?



Complete the sentences:

- London is the capital of... .
- It stands on
- The city is It is more than
- There are many ... in London: ..., ..., ...,
- Trafalgar Square is
- Buckingham Palace is
- The Houses of Parliament is
- The Tower of London was Now it is
- Madame Tussaud's is

HOMEWORK

1. Повторить грамматический материал.
2. Выполнить упр.3 стр.168, упр.6 стр.169 письменно

Thank you for your work!

