



NW Rapid Site Installation

NW220GPD

Typical NW Rapid plant layout

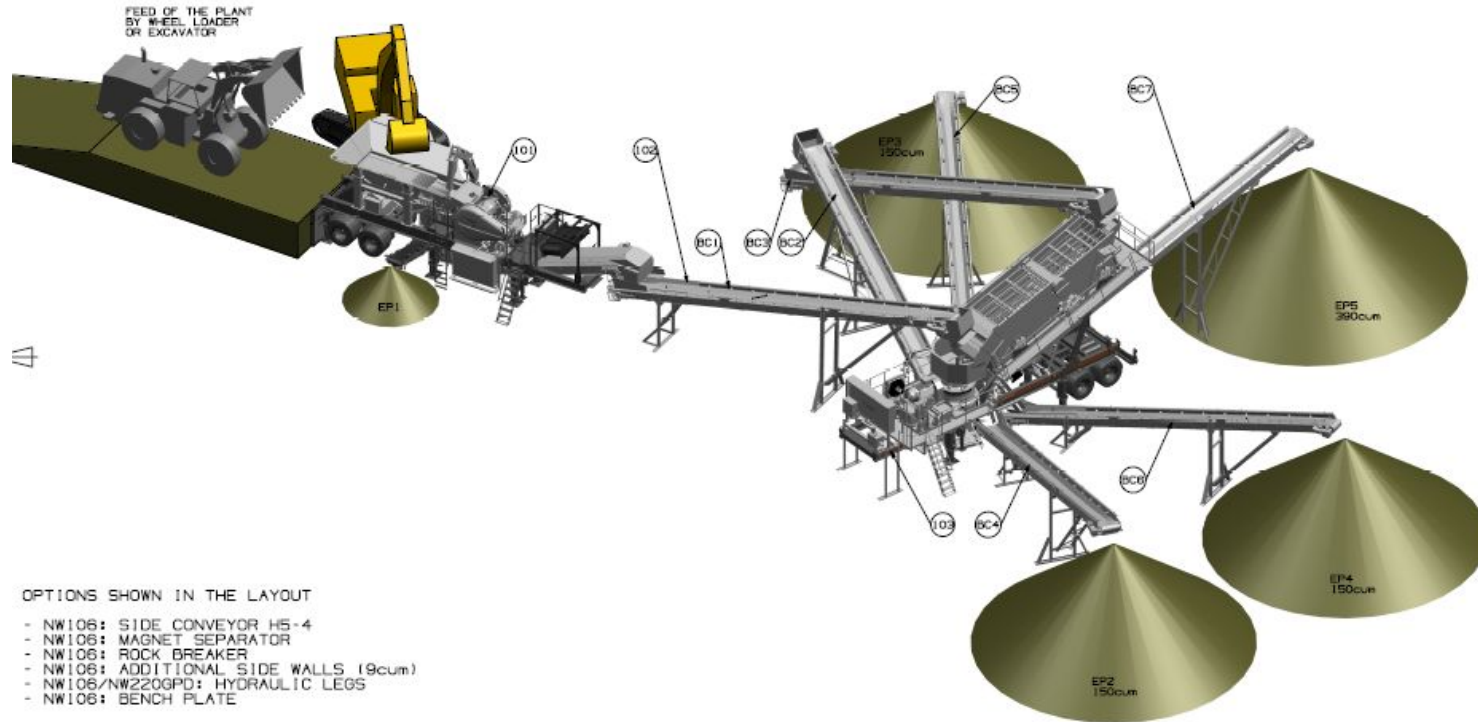
CONCEPT LAYOUT C2-5

MAIN UNITS

- 101: NW108
- 102: METAL DETECTOR
- 103: NW220GPD

CONVEYOR LIST

- BC-1 800mm - 15m
- BC-2 800mm - 15m
- BC-3 800mm - 15m
- BC-4 500mm - 15m
- BC-5 500mm - 15m
- BC-6 500mm - 15m
- BC-7 500mm - 15m



OPTIONS SHOWN IN THE LAYOUT

- NW108: SIDE CONVEYOR H5-4
- NW108: MAGNET SEPARATOR
- NW108: ROCK BREAKER
- NW108: ADDITIONAL SIDE WALLS (9cum)
- NW108/NW220GPD: HYDRAULIC LEGS
- NW108: BENCH PLATE

RECOMMENDED OPTIONS FOR QUICK FIX SOLUTION

- NW108: SIDE CONVEYOR H5-4
- NW108/NW220GPD: HYDRAULIC LEGS (Or additional pair of landing legs)
- NW108: 9cum, HYDRAULIC FOLDABLE FEED HOPPER
- NW108: BENCH PLATE FOR FEEDING WITH WHEEL LOADER/EXCAVATOR FEED
- NW220GPD: HYDRAULIC LIFTING OF SCREEN
- SYSTEM PORTION: AT LEAST ONE PRODUCT CONVEYOR 650mm - 15m (EXAMPLE BC-5)

NOTE: PLEASE CONSULT THE LIST OF AVAILABLE OPTIONS OF NW-UNITS AND PLANT SYSTEM PORTION FOR MORE OPTIONS

NO.	DESCRIPTION	UNIT	QTY	REMARKS
1	CONVEYOR BC-1	800mm - 15m	1	
2	CONVEYOR BC-2	800mm - 15m	1	
3	CONVEYOR BC-3	800mm - 15m	1	
4	CONVEYOR BC-4	500mm - 15m	1	
5	CONVEYOR BC-5	500mm - 15m	1	
6	CONVEYOR BC-6	500mm - 15m	1	
7	CONVEYOR BC-7	500mm - 15m	1	
8	FEED HOPPER EP1	9cum	1	
9	FEED HOPPER EP2	150cum	1	
10	FEED HOPPER EP3	150cum	1	
11	FEED HOPPER EP4	150cum	1	
12	FEED HOPPER EP5	350cum	1	
13	UNIT 101	NW108	1	
14	UNIT 102	METAL DETECTOR	1	
15	UNIT 103	NW220GPD	1	

Typical NW Rapid plant layout

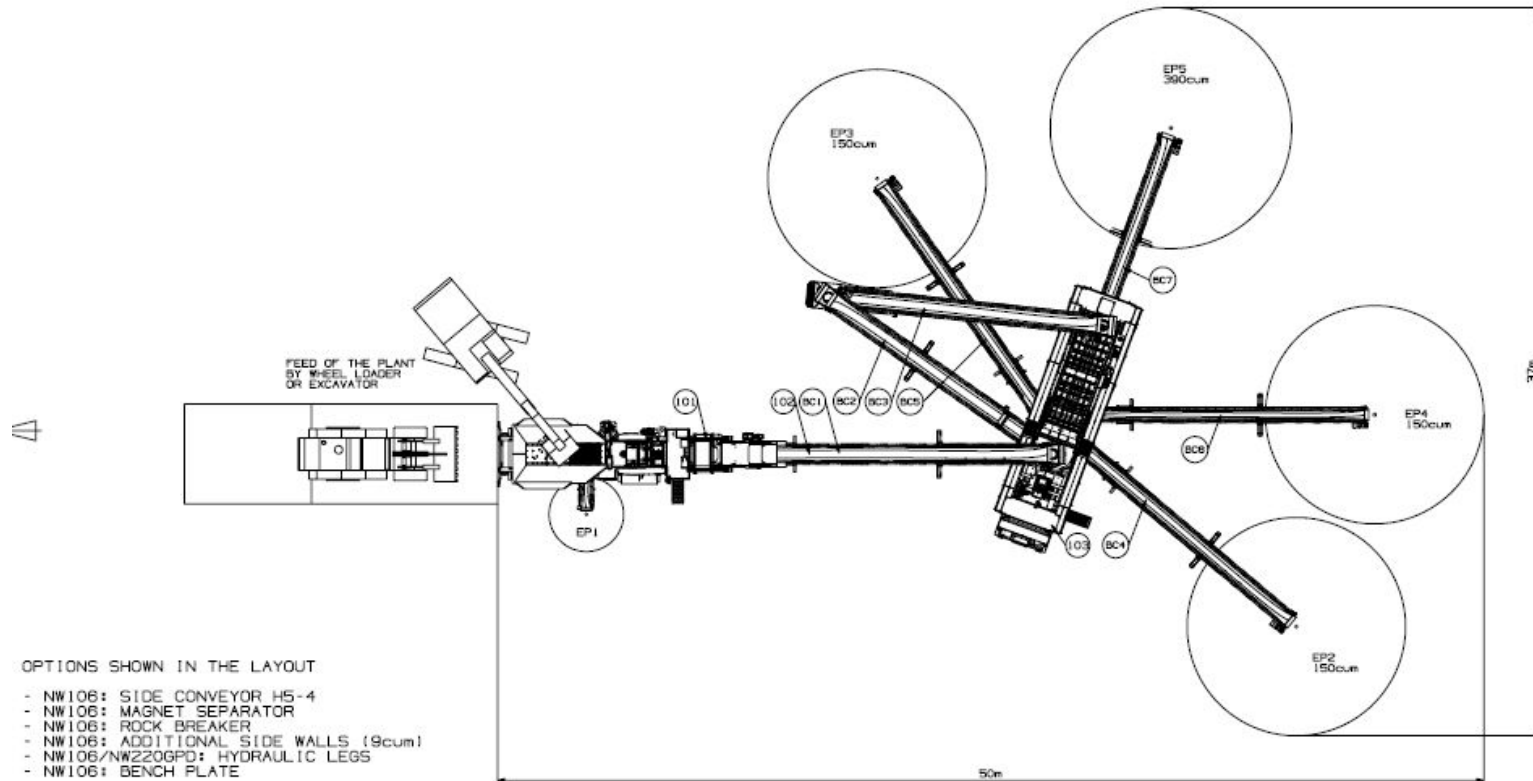
CONCEPT LAYOUT C2-5

MAIN UNITS

- 101. NW106
- 102. METAL DETECTOR
- 103. NW220GPD

CONVEYOR LIST

- BC-1 800mm - 15m
- BC-2 800mm - 15m
- BC-3 800mm - 15m
- BC-4 500mm - 15m
- BC-5 500mm - 15m
- BC-6 500mm - 15m
- BC-7 500mm - 15m



OPTIONS SHOWN IN THE LAYOUT

- NW106: SIDE CONVEYOR H5-4
- NW106: MAGNET SEPARATOR
- NW106: ROCK BREAKER
- NW106: ADDITIONAL SIDE WALLS (900mm)
- NW106/NW220GPD: HYDRAULIC LEGS
- NW106: BENCH PLATE

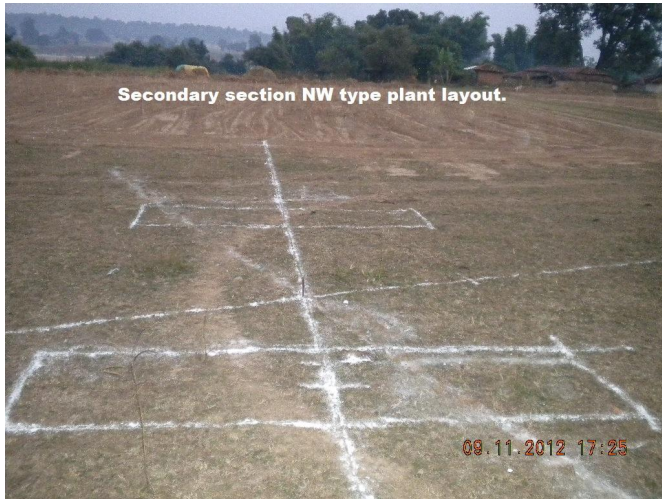
RECOMMENDED OPTIONS FOR QUICK FIX SOLUTION

- NW106: SIDE CONVEYOR H5-4
- NW106/NW220GPD: HYDRAULIC LEGS (Or additional pair of landing legs)
- NW106: 900mm, HYDRAULIC FOLDABLE FEED HOPPER
- NW106: BENCH PLATE FOR FEEDING WITH WHEEL LOADER/EXCAVATOR FEED
- NW220GPD: HYDRAULIC LIFTING OF SCREEN
- SYSTEM PORTION: AT LEAST ONE PRODUCT CONVEYOR 800mm - 15m (EXAMPLE BC-5)

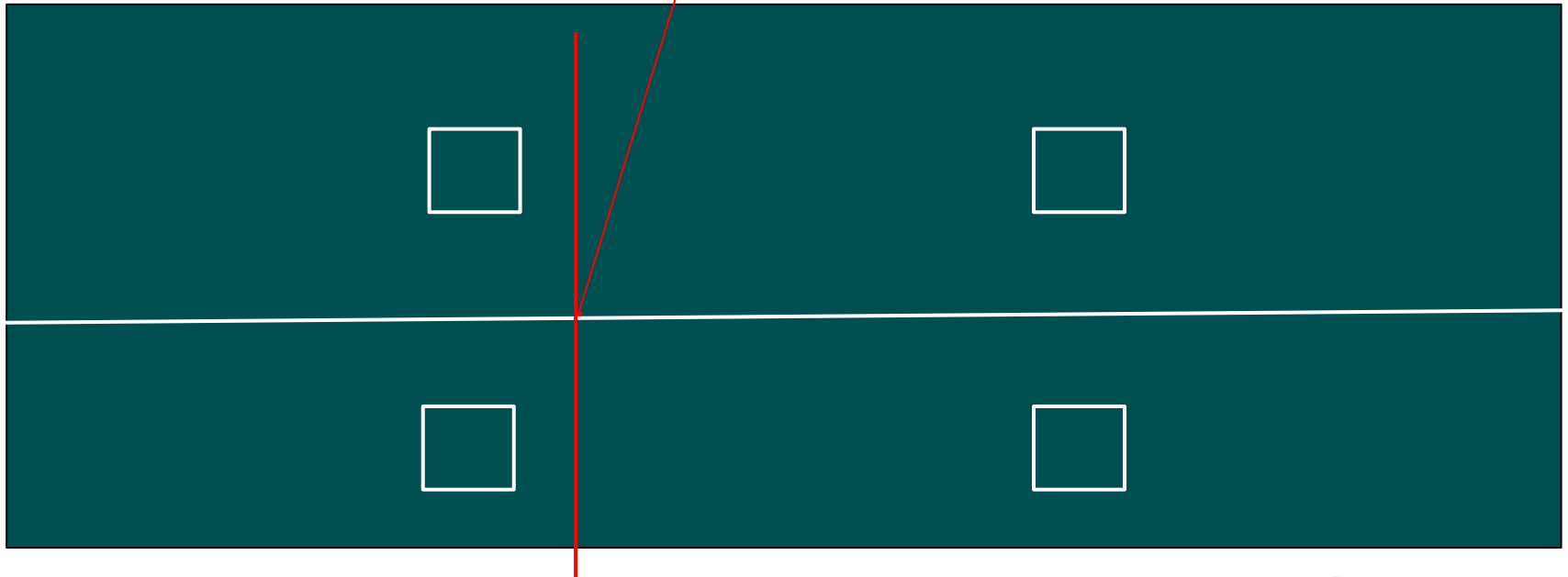
NOTE: PLEASE CONSULT THE LIST OF AVAILABLE OPTIONS OF NW-UNITS AND PLANT SYSTEM PORTION FOR MORE OPTIONS

<div>  </div>		<div>  </div>	
<div>  </div>		<div>  </div>	
<div>  </div>		<div>  </div>	
<div>  </div>		<div>  </div>	
<div>  </div>		<div>  </div>	
<div>  </div>		<div>  </div>	
<div>  </div>		<div>  </div>	
<div>  </div>		<div>  </div>	
<div>  </div>		<div>  </div>	
<div>  </div>		<div>  </div>	
<div>  </div>		<div>  </div>	
<div>  </div>		<div>  </div>	
<div>  </div>		<div>  </div>	
<div>  </div>		<div>  </div>	
<div>  </div>		<div>  </div>	
<div>  </div>		<div>  </div>	

Co-ordinate marking as per layout

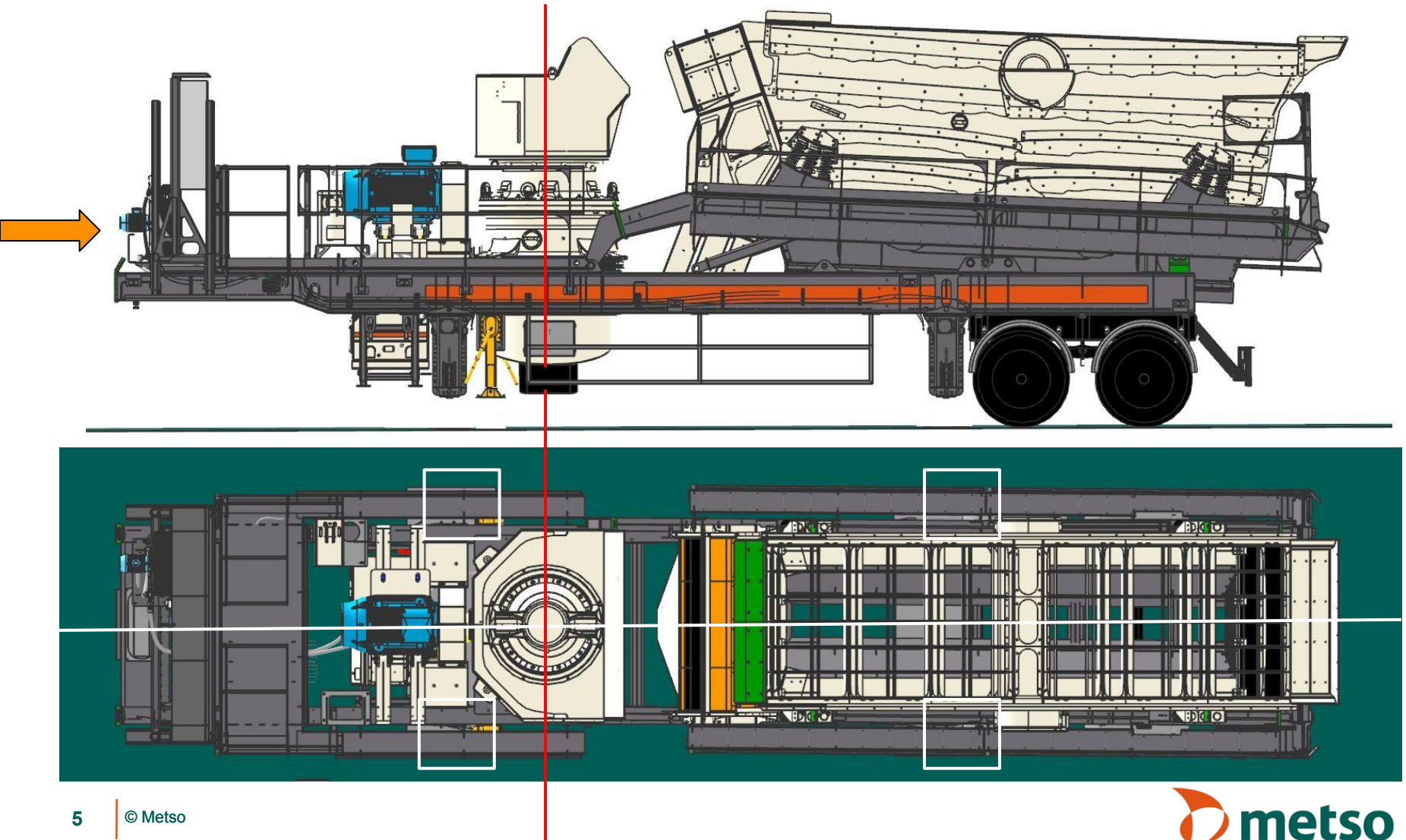


Centre line of
Crusher

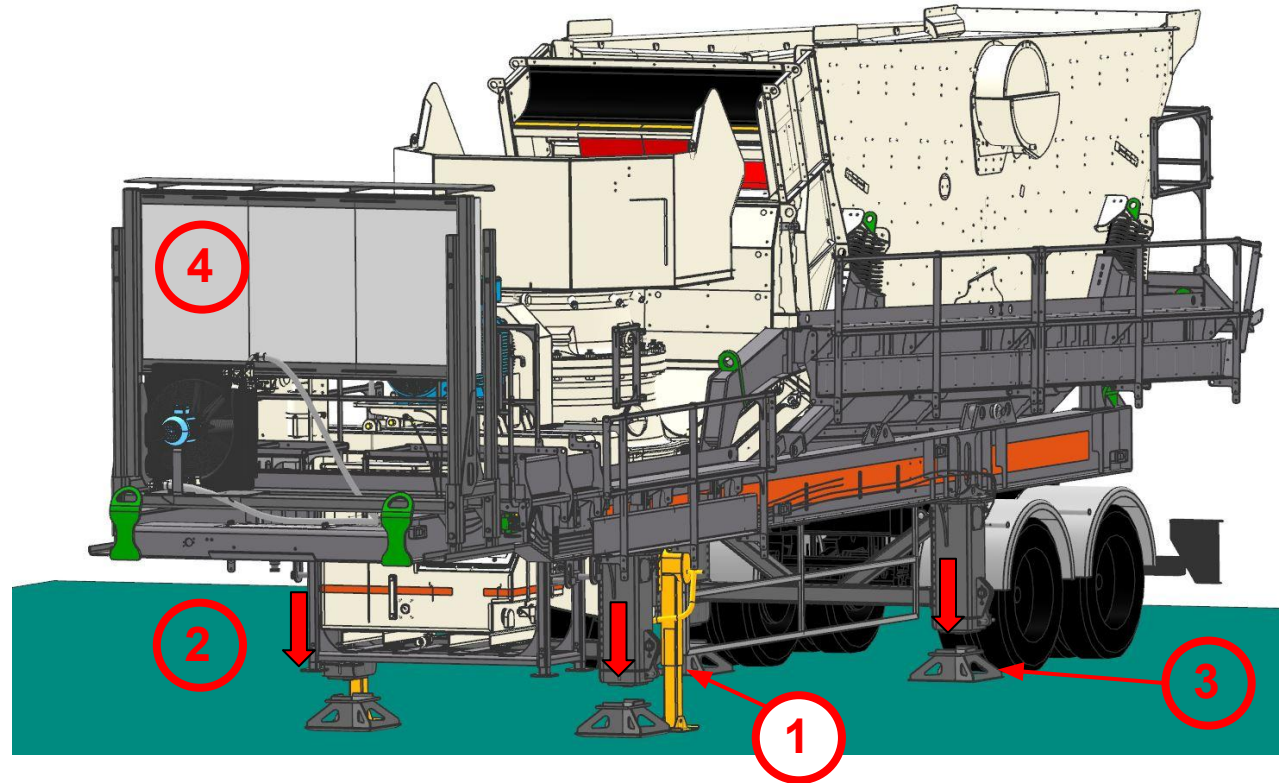


Positioning of the NW chassis

Drive in the NW, align the NW with respect to centre line and position of the legs.



Support the NW on Hydraulic legs

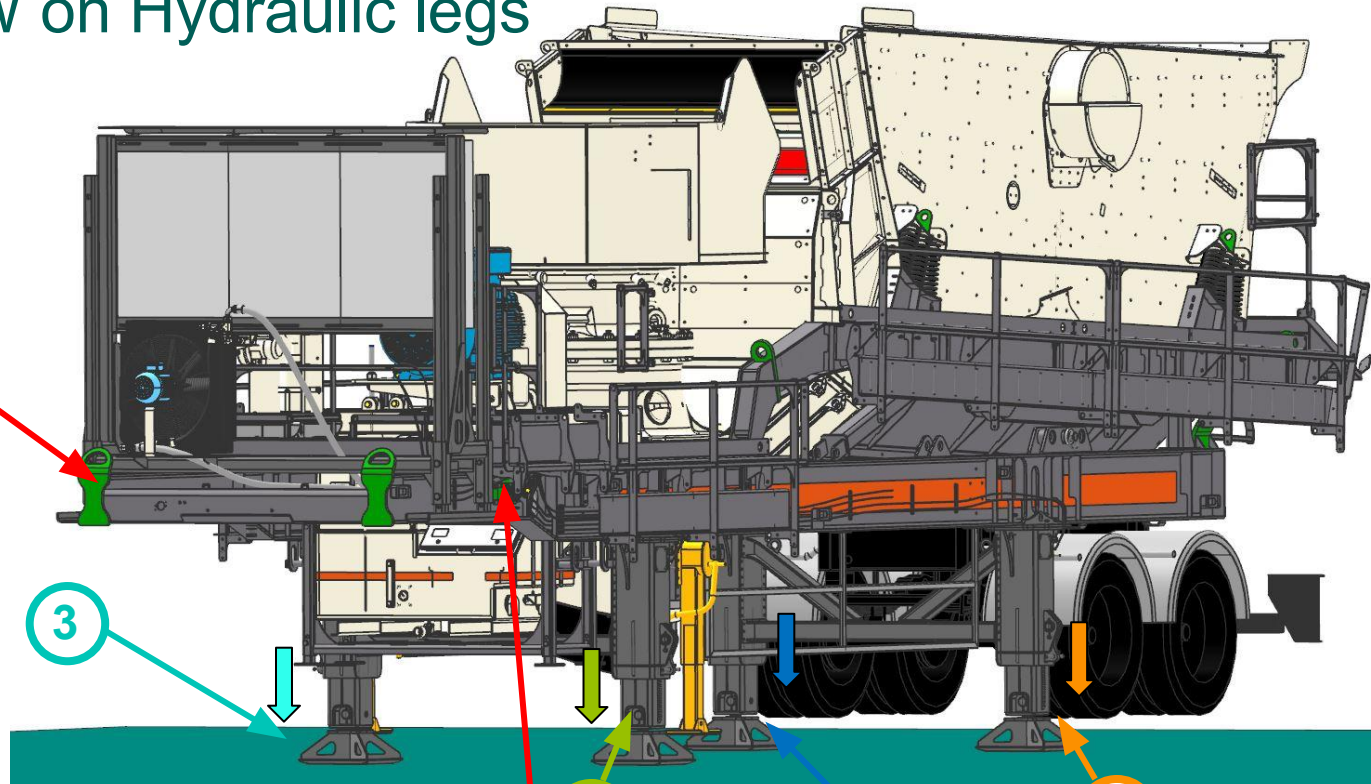


- 1) Support the NW on Landing Legs.
- 2) De-couple the Horse
- 3) Place the base plate of the Hydraulic legs just below the Legs.
- 4) Power up the main Control Centre and start the Hydraulic power pack. Ensure correct rotation.
- 5) Operate the Hydraulic valve to lower the legs.

Support the NW on Hydraulic legs



4 3



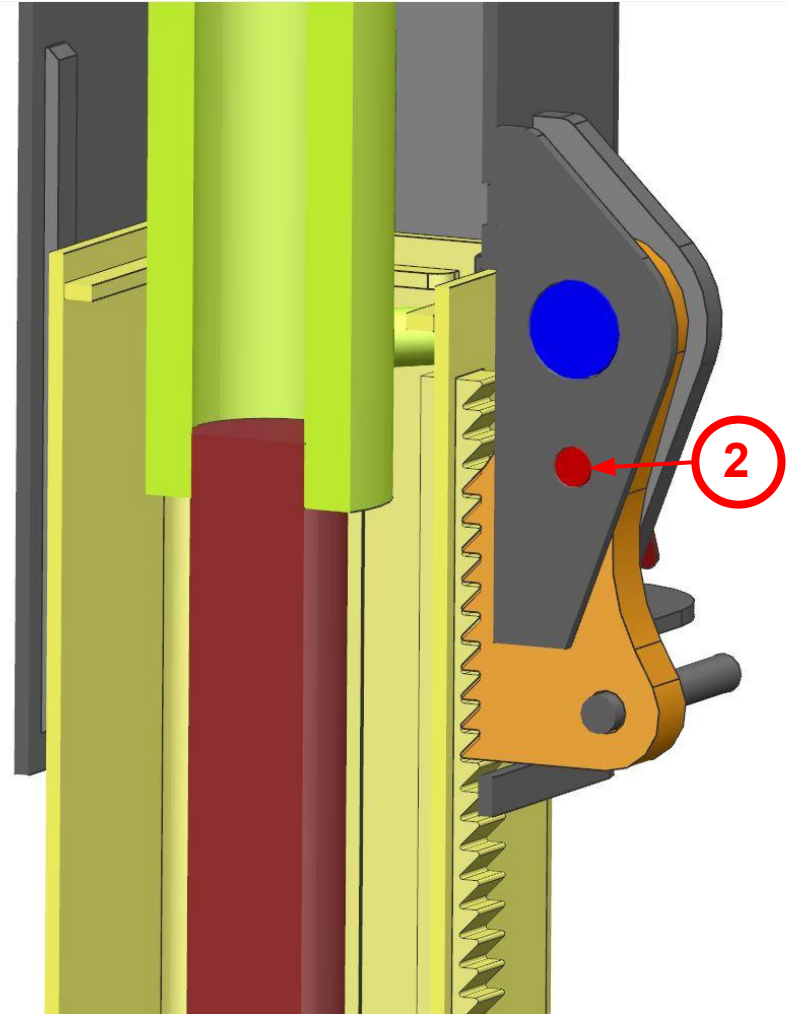
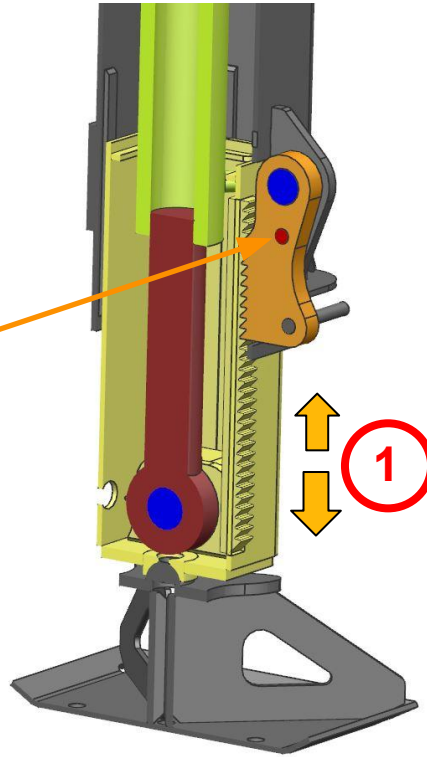
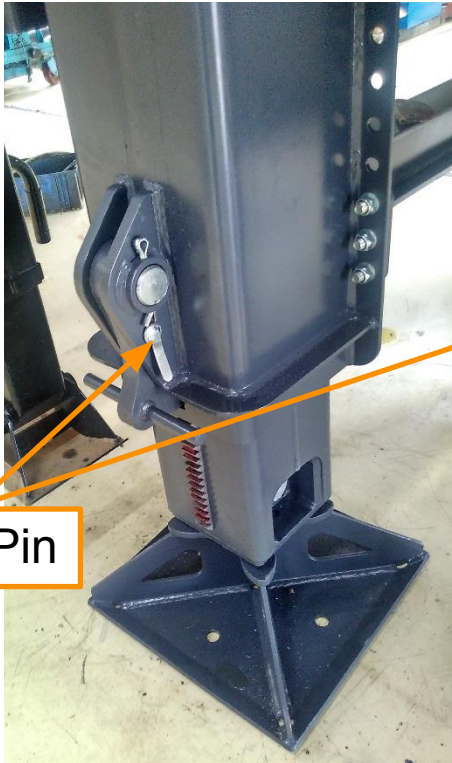
1 2

Note : Operate alternate legs and keep the chassis horizontal .

↑ Cylinder Up
●
↓ Cylinder Down

Support the NW on Hydraulic legs

Operation of Hydraulic Legs

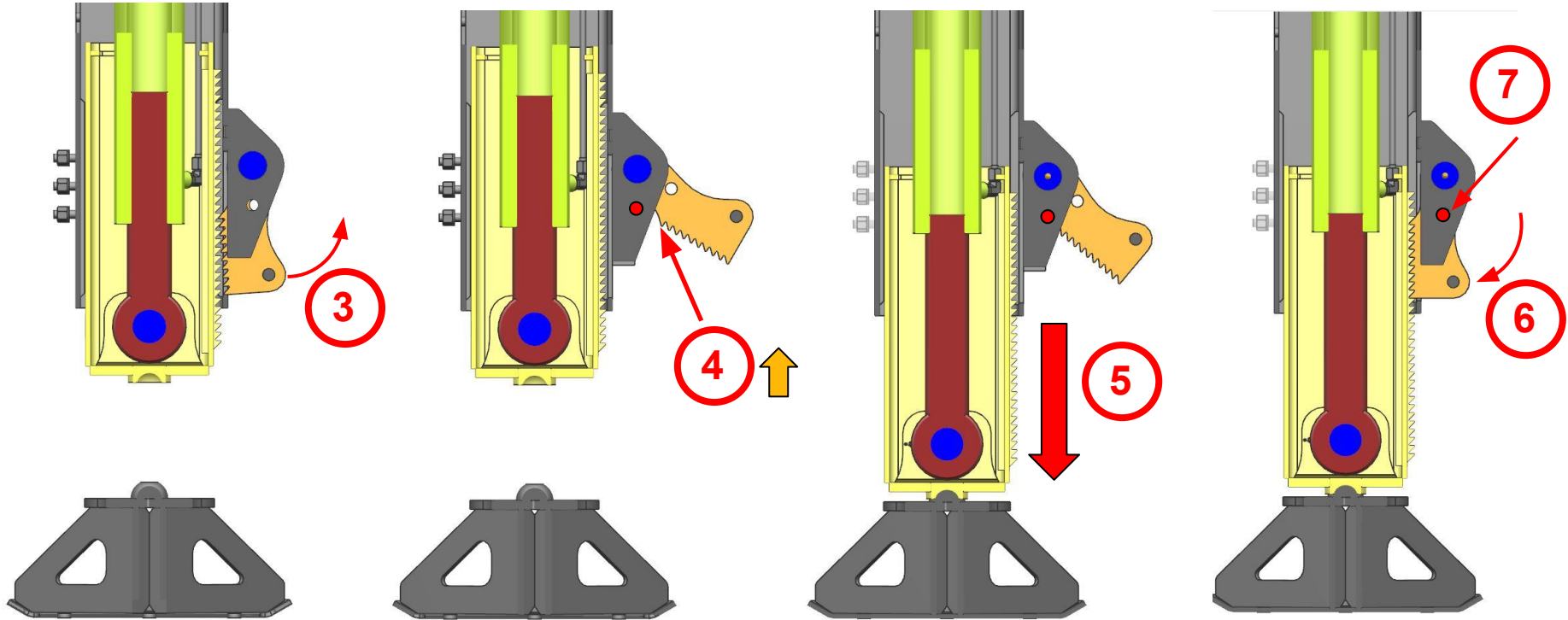


- 1) Operate (inching) the hydraulic cylinder Up / Down to loose the Lock pin.
- 2) Remove the locking Pin.

1/2

Support the NW on Hydraulic legs

Operation of Hydraulic Legs

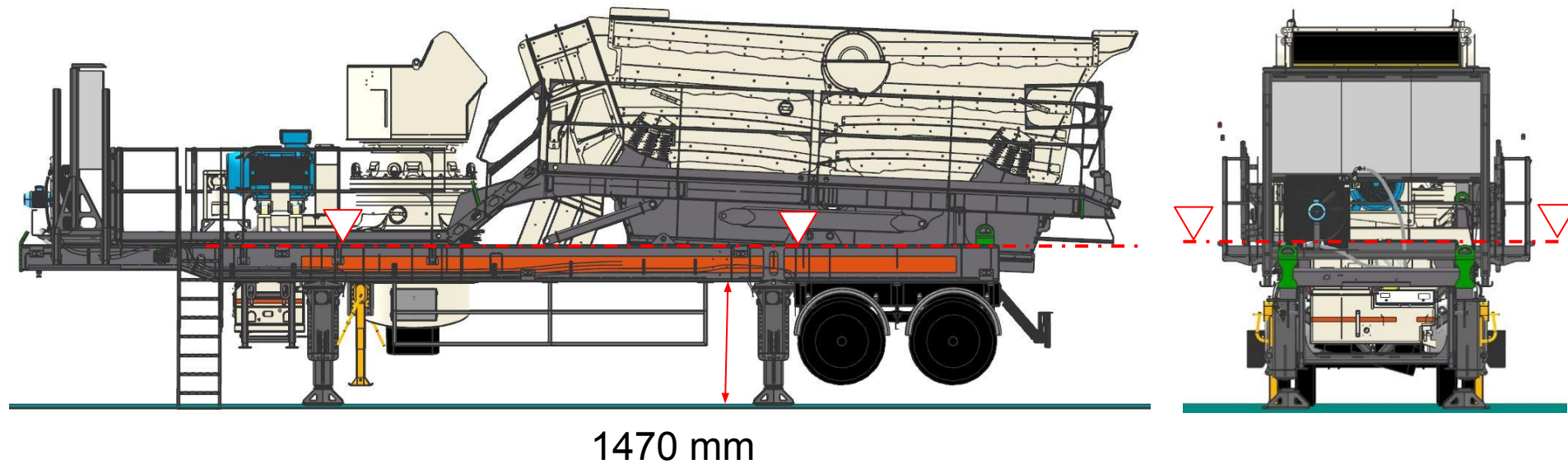


- 3) Turn the lock plate upward and disengage from rack.
- 4) Put the lock pin to hold the lock plate in dis-engaged position.
- 5) Lower the cylinder to support the NW.
- 6) Remove the lock pin and turn the lock plate downward. Operate the cylinder to match the pitch.
- 7) Put the lock pin to hold the lock plate in position.

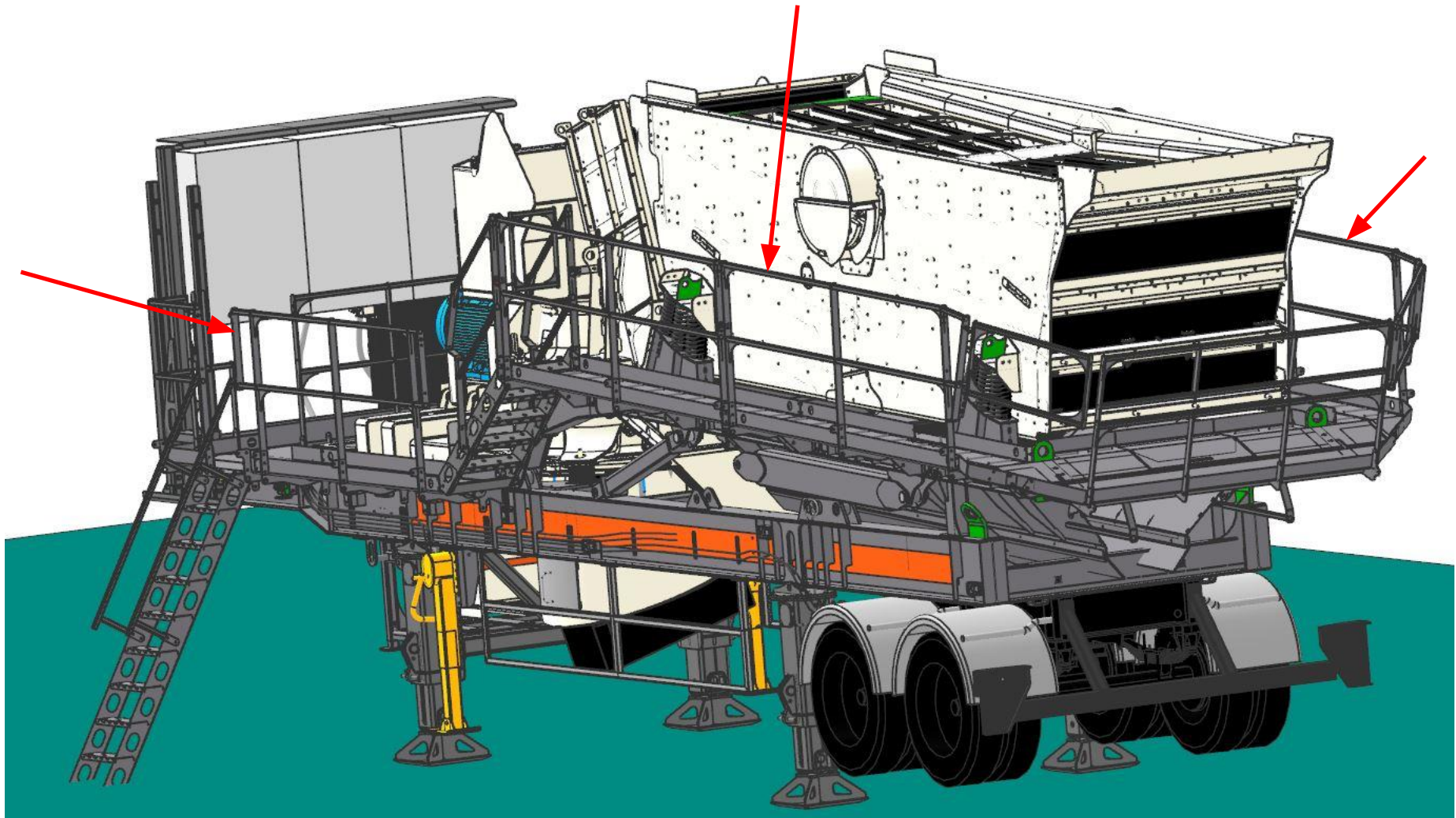
2/2

Support the NW on Hydraulic legs

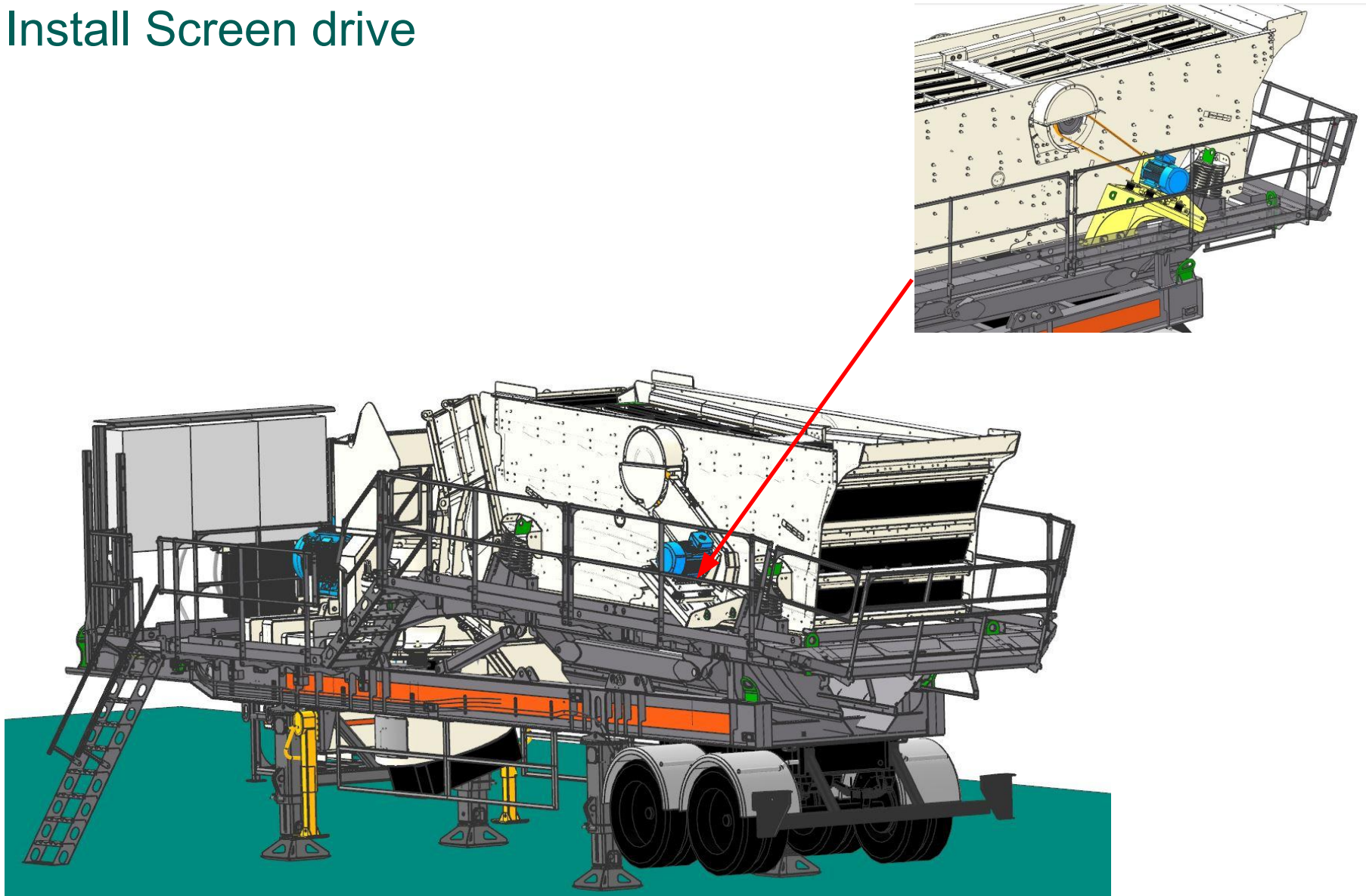
Level the NW chassis

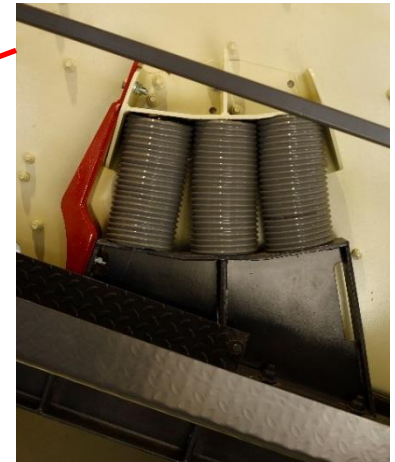
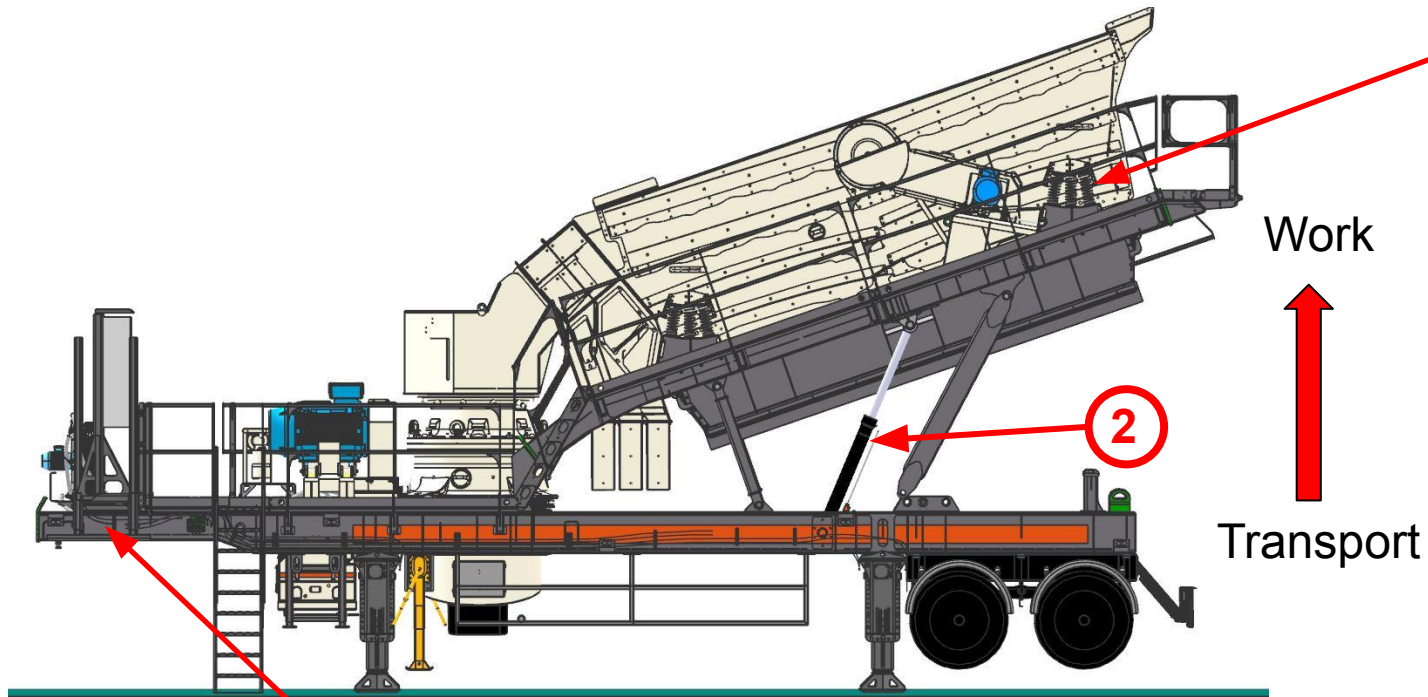


Unfold the hand rails



Install Screen drive





1

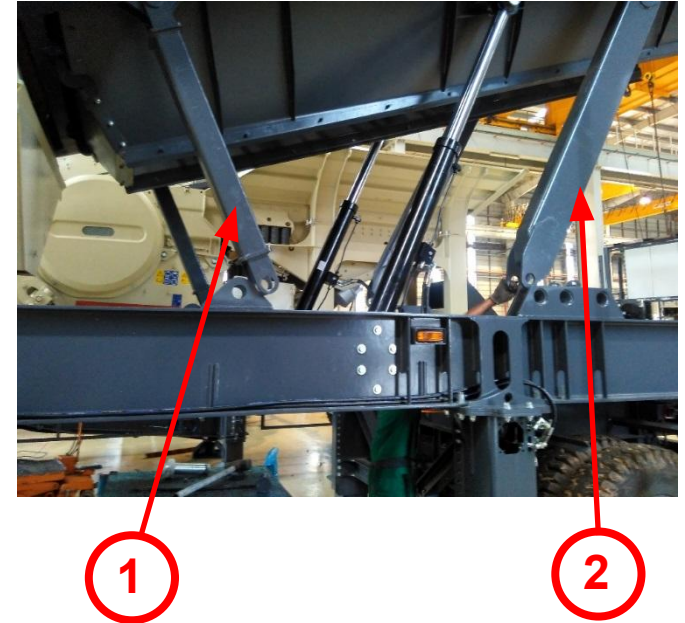
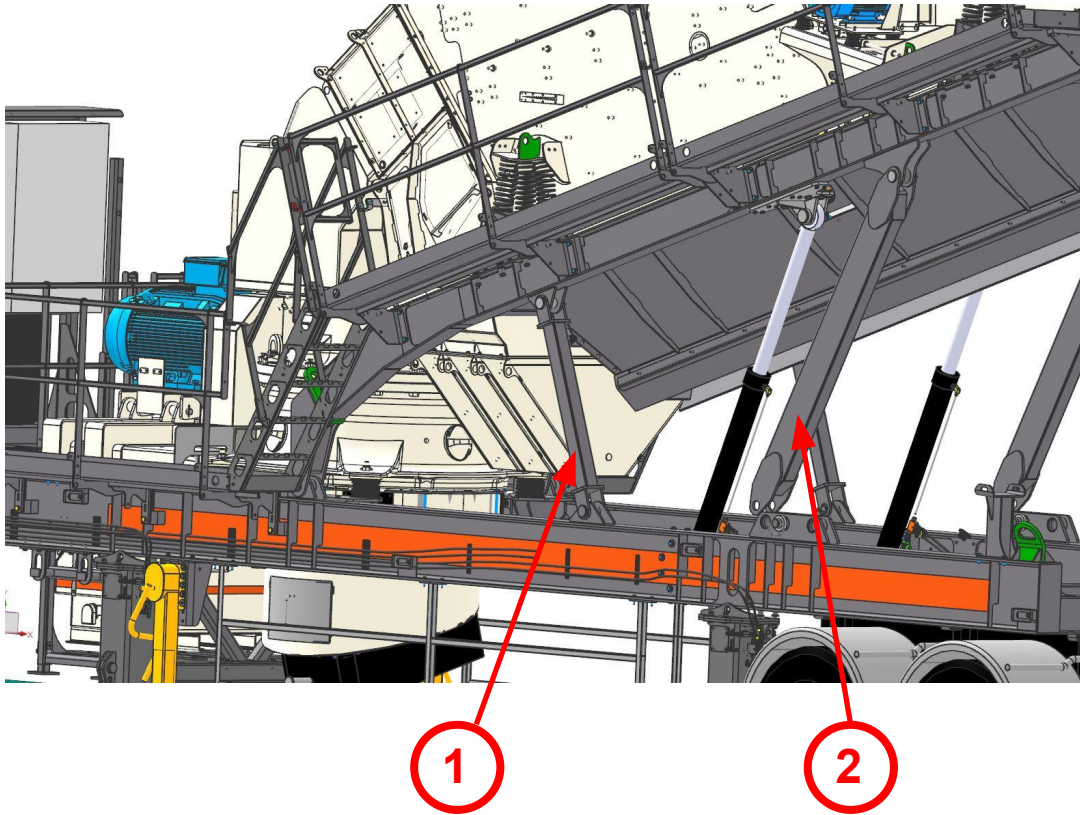


2

↑ Cylinder Up
 ●
 ↓ Cylinder Down

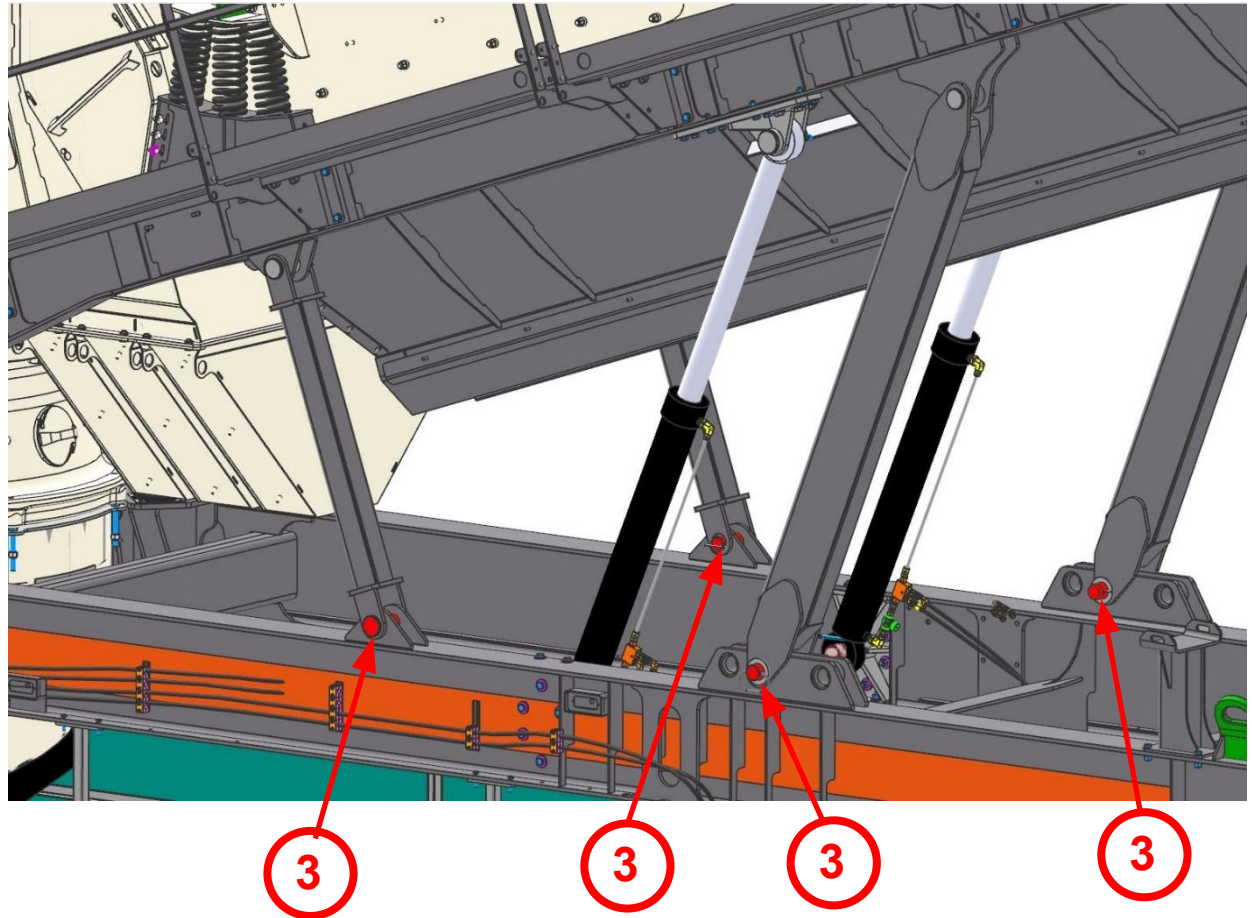
- 1) All the Screen springs must be locked by using screen transport lock.
- 2) Operate the hydraulic hand valve to lift / lower the screen

Lift the screen



- 1) Install the smaller support levers first.
- 2) Lift the screen and install bigger support levers.

Lift the screen



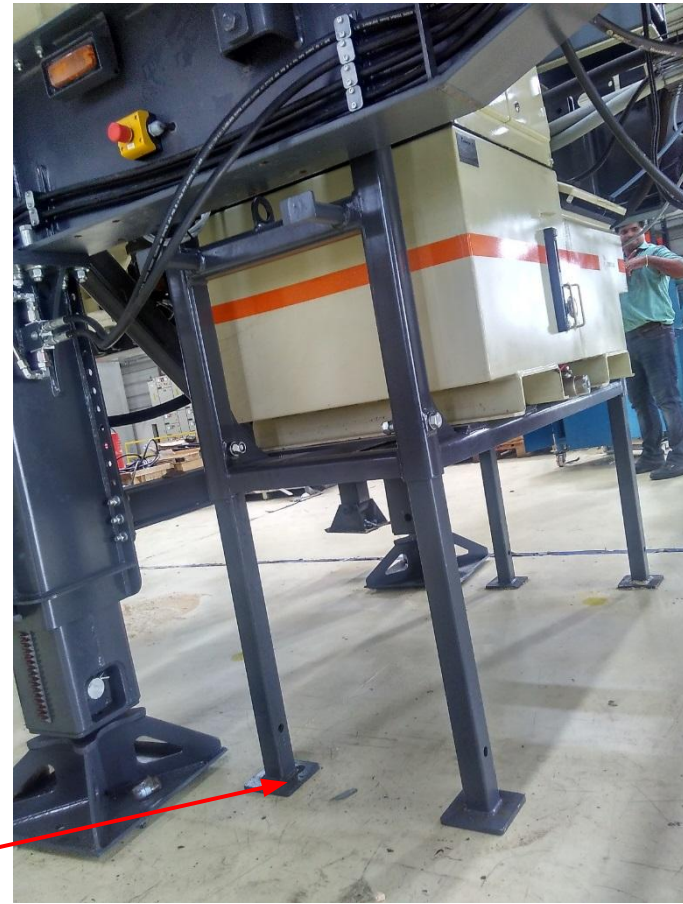
- 3) Install the lock pins / washers....
- 4) Remember to remove the screen transport lock.

Isolate Crusher Lubrication Unit



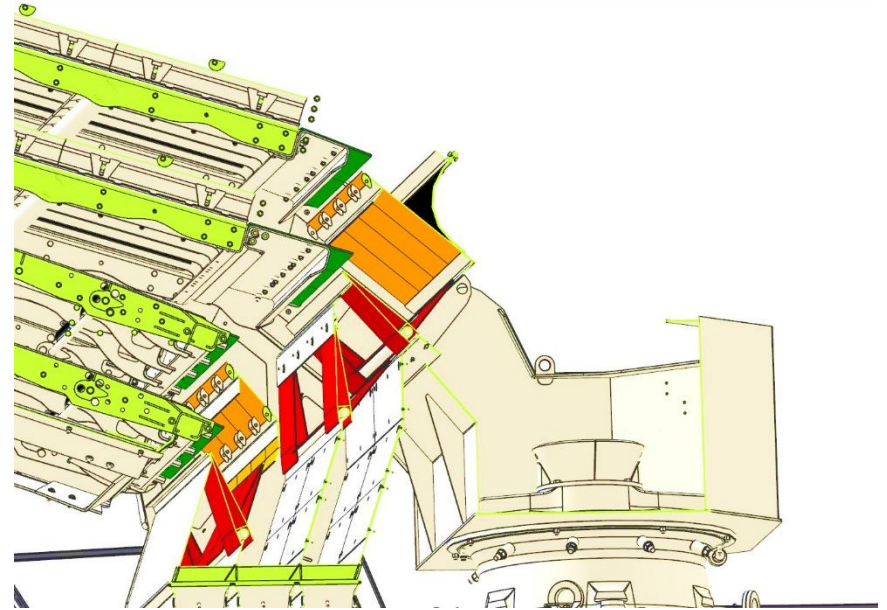
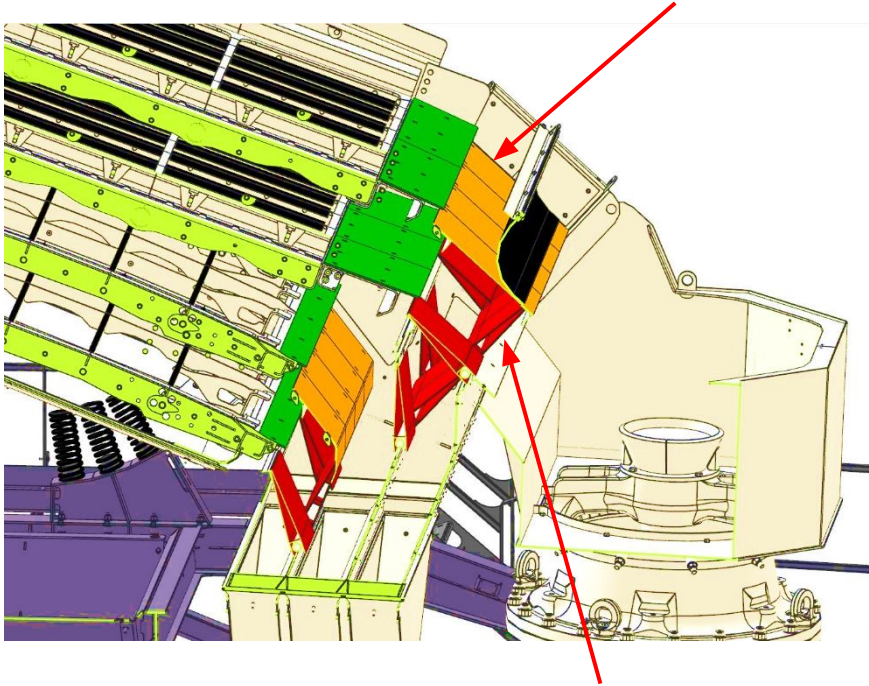
2

1

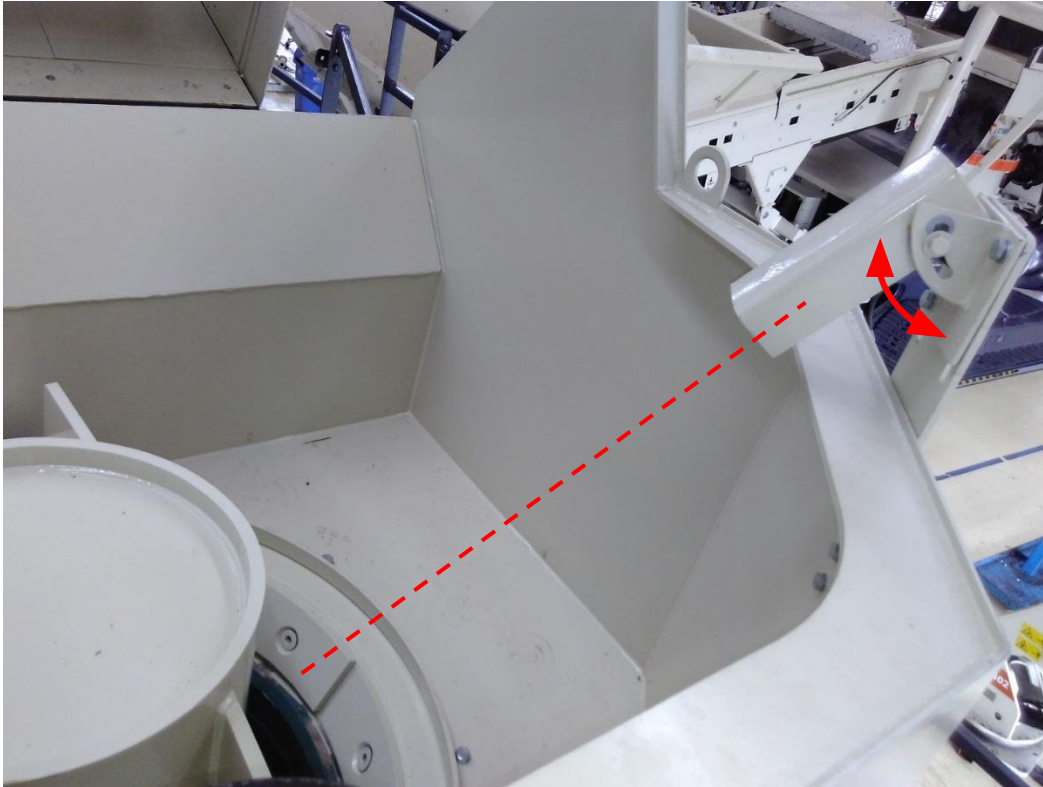


- 1) Support the Lubrication Unit on ground.
- 2) Remove the bracket to isolate the tank from chassis.

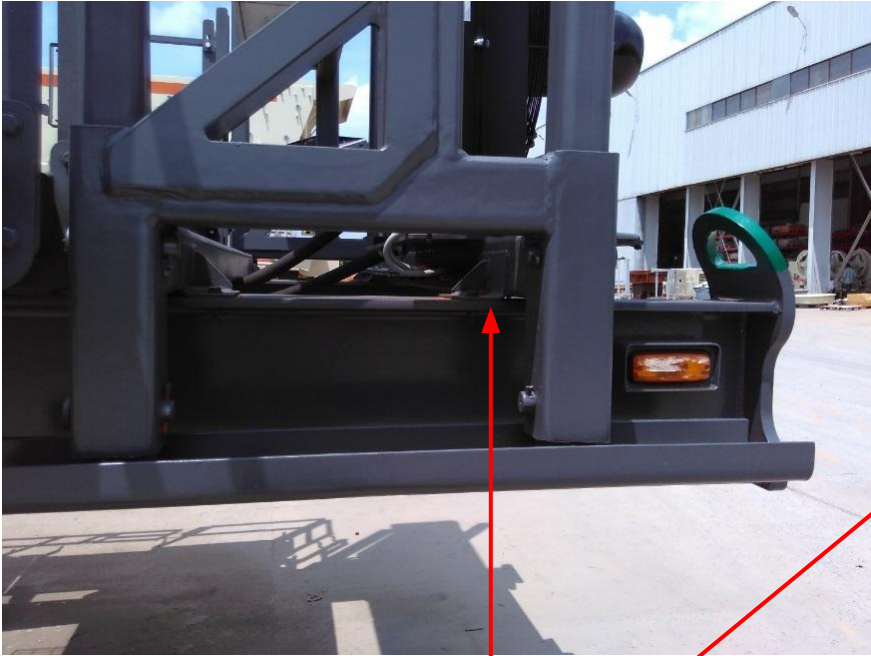
Set the dividing hopper gate as per process requirement



Set Up Cavity Level Sensor



Isolate the Control Centre from NW chassis.



Remove the mounting bolts and support the Control Centre on Telescopic legs.



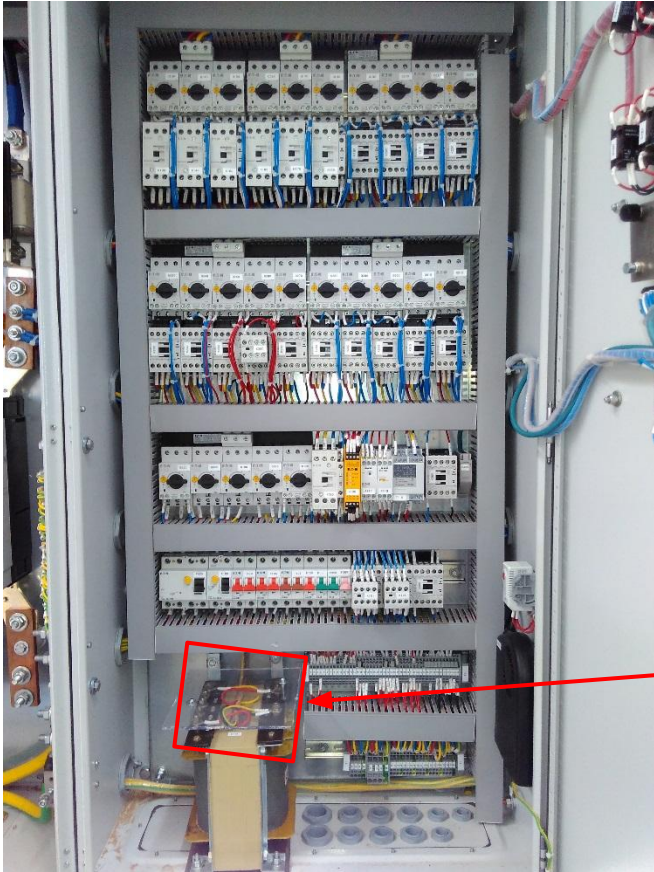
Electrical Installation

Electrical Installation

Connect Screen motor power cable.



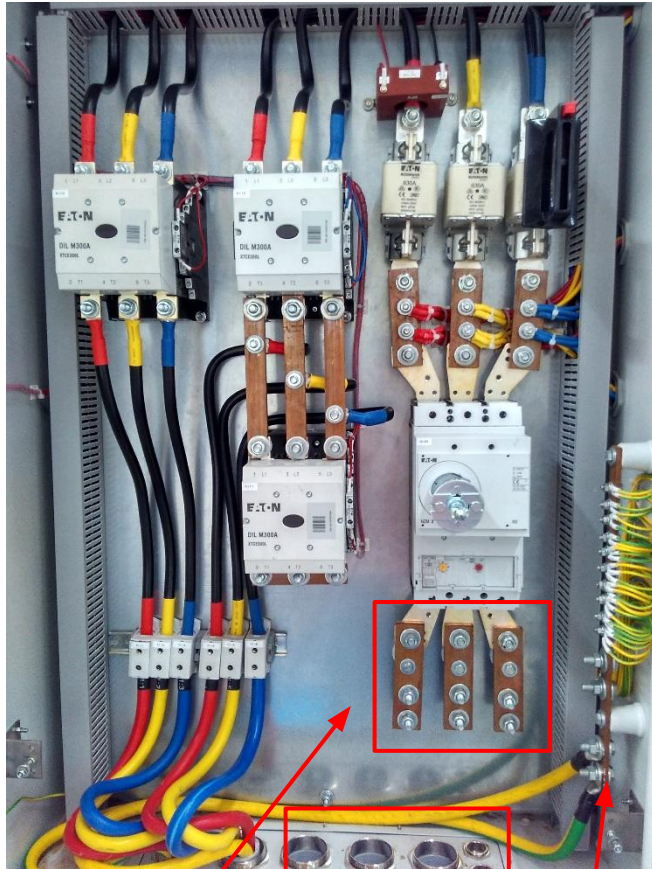
Electrical Installation



- Check and change the Incoming voltage of the control transformer if needed



Electrical Installation



Incoming

Gland

Ground

Do's



Don't

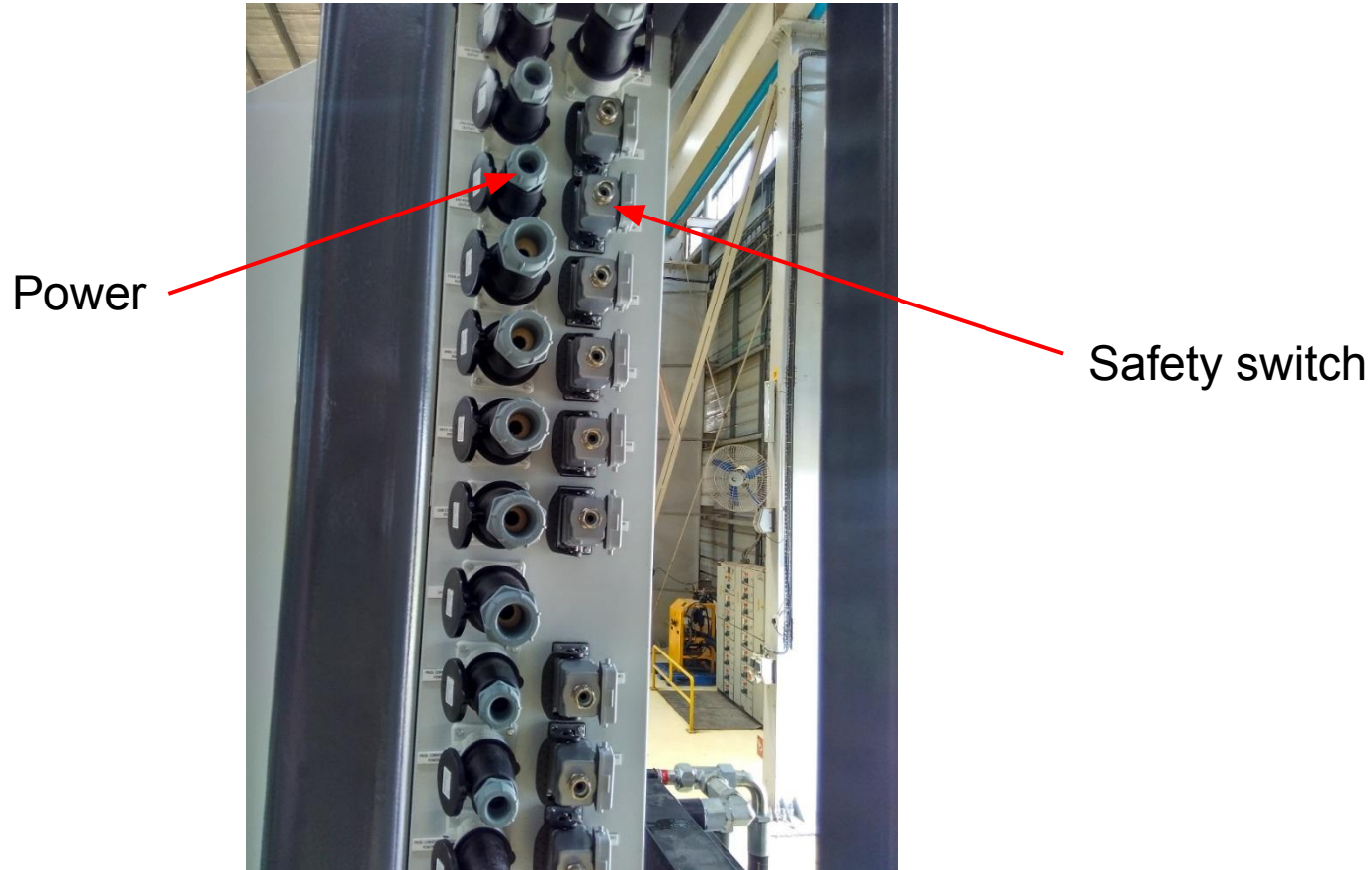


Connect Control Centre Power Cables .

- Use proper size cable/gland.
- For selection of cable refer Electrical documents.
- Incoming cables must be tighten properly
- Control centre / chassis must be connected to ground / earth. Follow local electrical rules for earth pith.

Electrical Installation

Plant Conveyor connection



Refer Electrical Circuit diagram for Plant Conveyor connection details

Electrical Installation

IC50C Parameters to be set as per plant layout and feed arrangement

18	Single start alarm for optionals	G219	0		
19	Optional module 1 OCM in use	G220	0		
20	Optional module 2 SCM in use	G250	1		
21	Feed arrangement (0 = Recycling to screen, 1 = Recycling to crusher (Screen feed), 2 = Recycling to feed conveyor)	G251	0		
22	Recycling stop delay from feed pause	G252	60 Sec		
23	Start delay between devices for SCM	G253	5 Sec		
24	Stop delay between devices for SCM	G254	15 Sec		
25	Product conveyor 1 in use	G255	1		
26	Product conveyor 1 speed sensor low speed limit (0= not in use, 1= continuous mode, >1 low speed limit pulses per minute)	G256	0		
27	Product conveyor 2 in use	G257	1		
28	Product conveyor 2 speed sensor low speed limit	G258	0		
29	Product conveyor 3 in use	G259	1		
30	Product conveyor 3 in use Product conveyor 3 in use	G260	0		
31	Product conveyor 4 in use	G261	1		
32	Product conveyor 4 speed sensor low speed limit	G262	0		
33	Recycling conveyor in use	G263	1		
34	Recycling conveyor speed sensor low speed limit	G264	0		
35	Screen in use	G267	1		
36	Screen speed sensor low speed limit	G268	0		
37	Crusher starting delay	C401	15 Sec		
38	Crusher stopping delay	C402	15 Sec		



www.metso.com

