



Smarten up your Home

SALTO Systems HQ, Spain
Polígono Lanbarren - C/ Arkotz, 9
20180 Oiartzun, Spain

T: +34 943 344 550
www.saltosystems.com

SALTO
inspired**access**

DANALOCK V3

System Devices



Danalock V3

Simply the smartest,
smallest and strongest
smartlock on the market

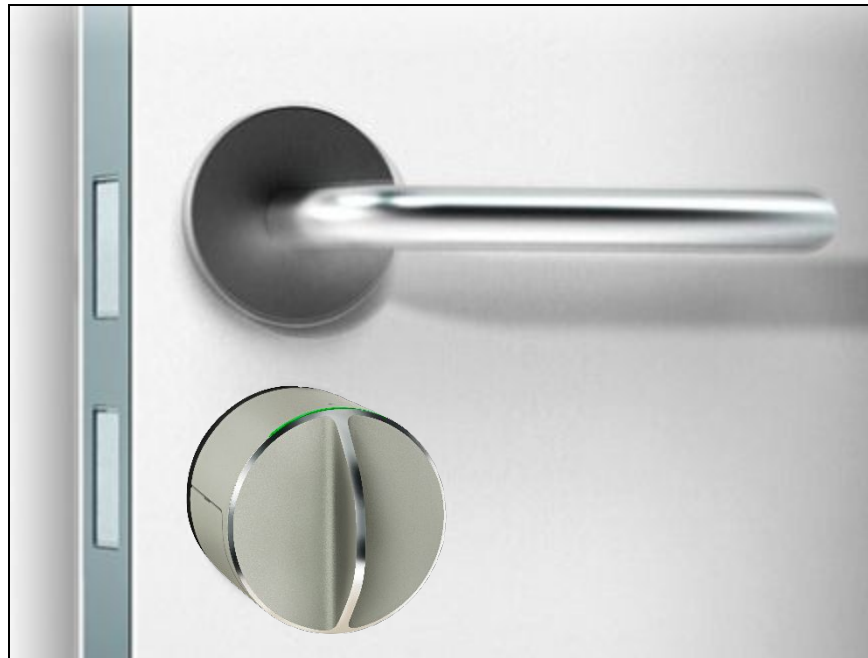


Danalock
mobile app

INTRODUCTION

Types of solution

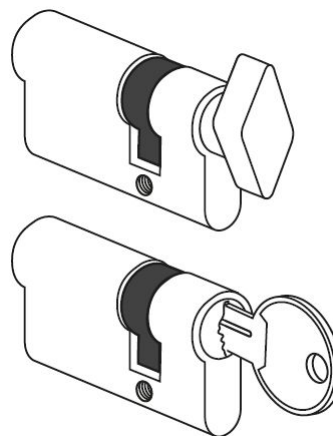
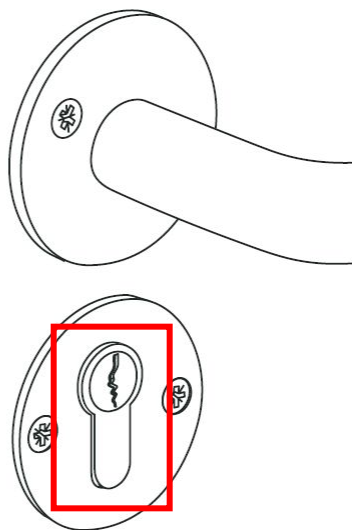
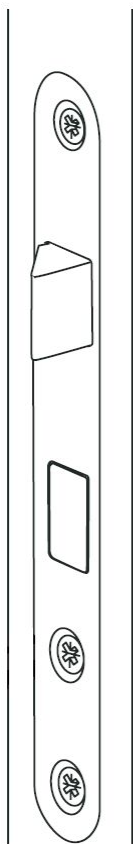
European Profile Cylinders



INTRODUCTION

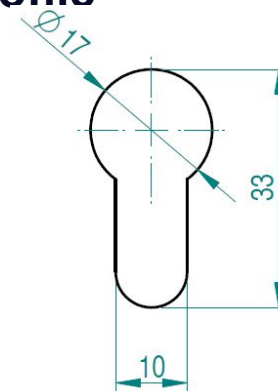
What do we find in the door?

Usually we have an european profile cylinder and in inside a handle



Cylinder with
thumbturn

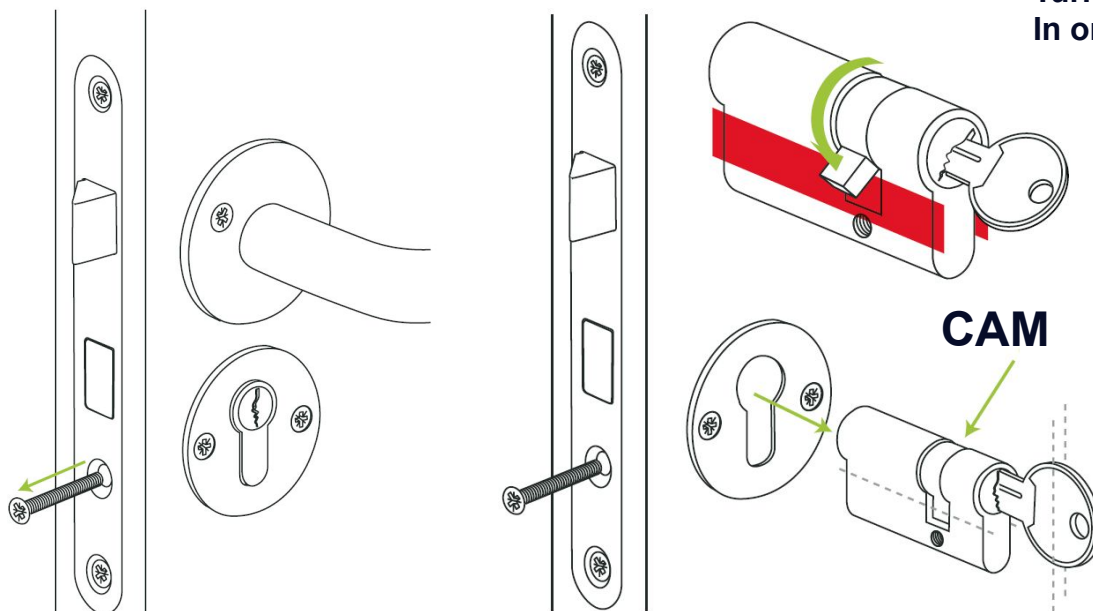
**PZ european
profile**



INTRODUCTION

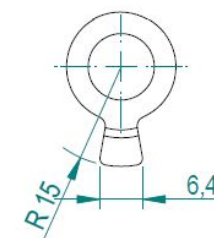
What do we find in the door?

Remove the fixing screw to remove the existing cylinder:



Turn the key 12°
In order to move the CAM

DIN 15mm (D)



**SPAIN 13,2mm
for metal doors (M)**



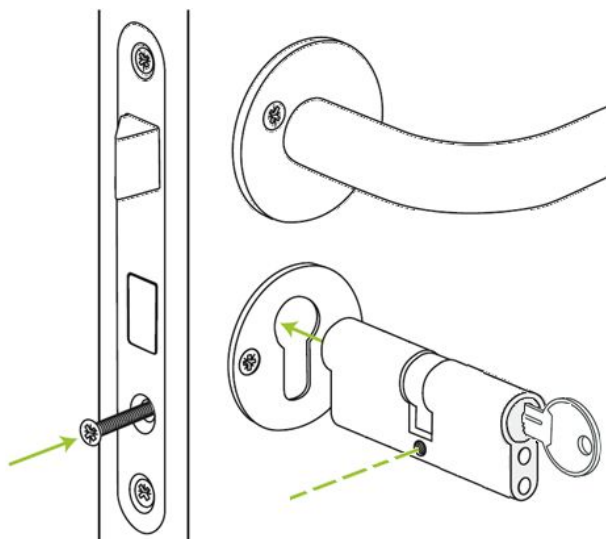
**Pay attention to the type of
CAM since can be 15 or 13mm
CAM**



INTRODUCTION

Double clutch Installation

Fix the screw:



DEADBOLT MUST BE PROJECTED EASILY.

DOUBLE CLUTCH MECHANISM

If the keys are inserted inside we can open from outside

STANDARD cylinder does not allow opening from outside if keys are inserted inside



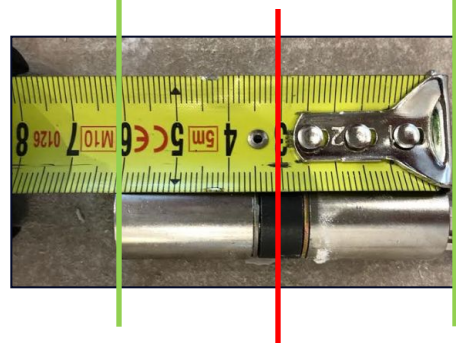
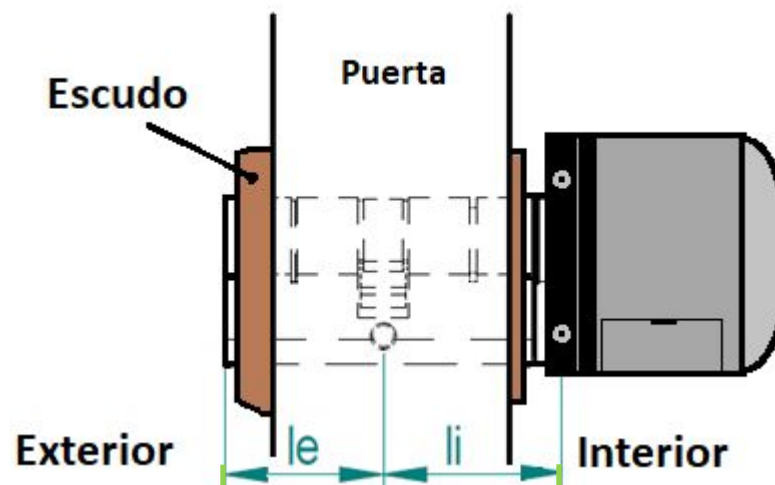
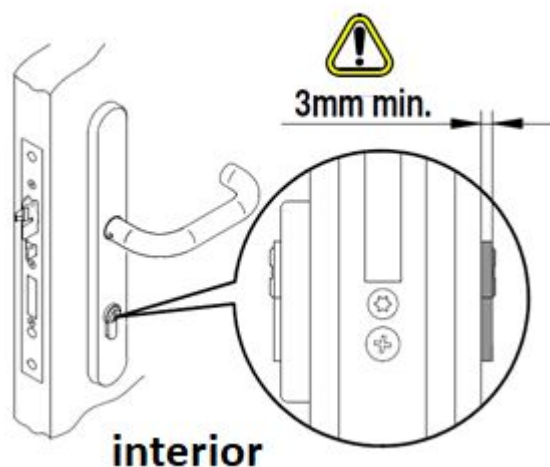
Deadbolt must be projected easily



INTRODUCTION

CHOOSE A CYLINDER

Pay attention with the
thickness of  internal/external sides



Length of the
Cylinder
 $Le \times Li = 30 \times 30$

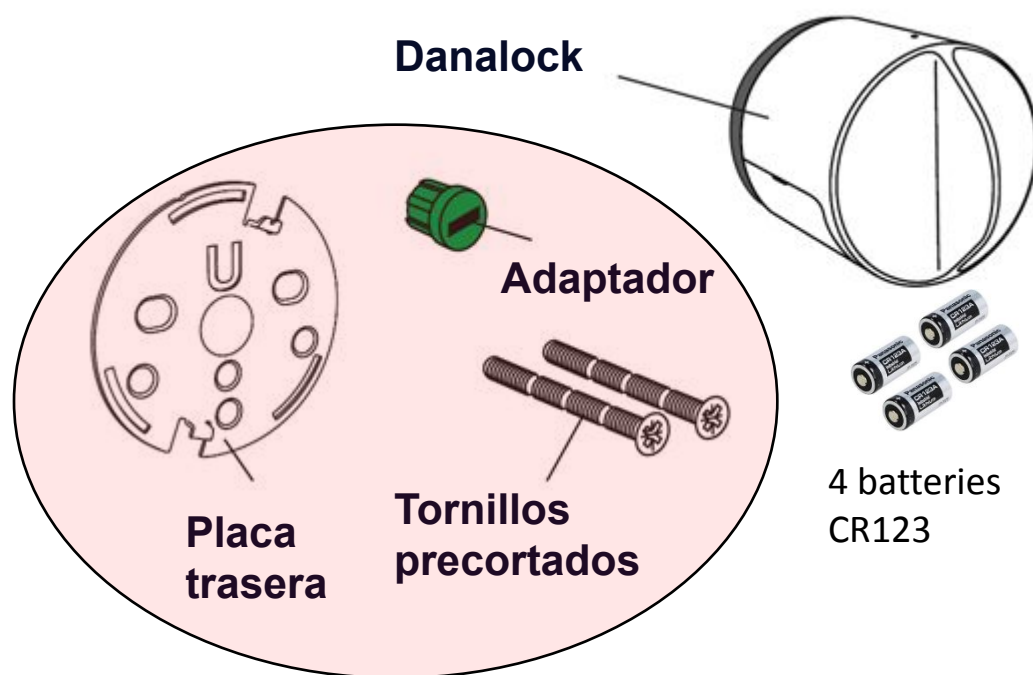


3 mm in the minimal
requirement to override the
escutcheon from the internal
side in order to install Key
Turner where is fitted the
Danalock.

INTRODUCTION

Danalock V3

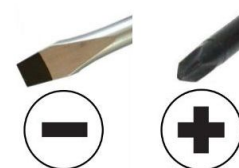
DANALOCK Kit scope of supply:



Pieces which are not included
in the scope of supply of
Danalock KEY TURNER

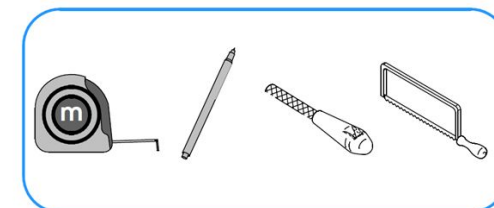
Necessary screws:

✓ Philips Screwdriver and flathead screwdriver



Remove cylinder

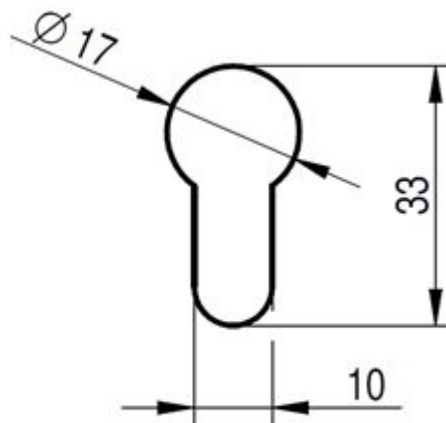
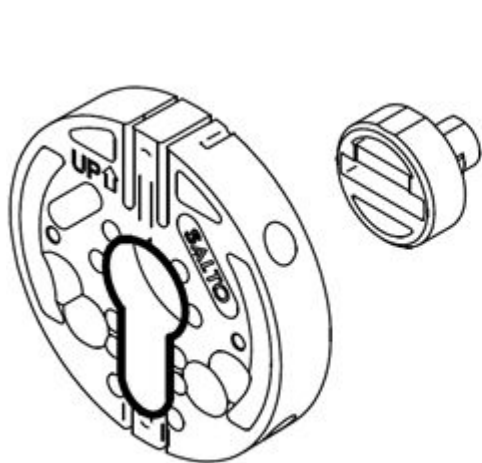
✓ Kit key Turner



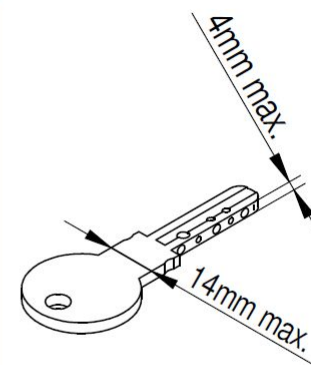
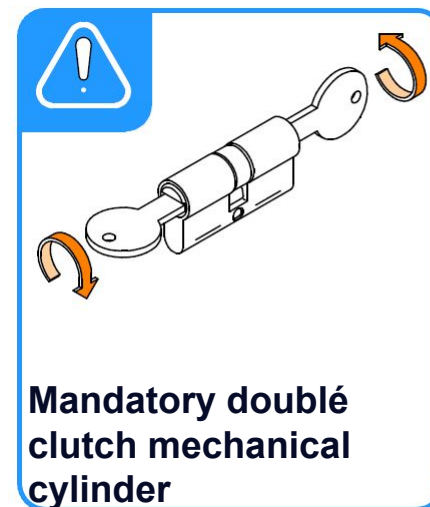
INTRODUCTION

Key Turner Installation

Solución to use a third party cylinder



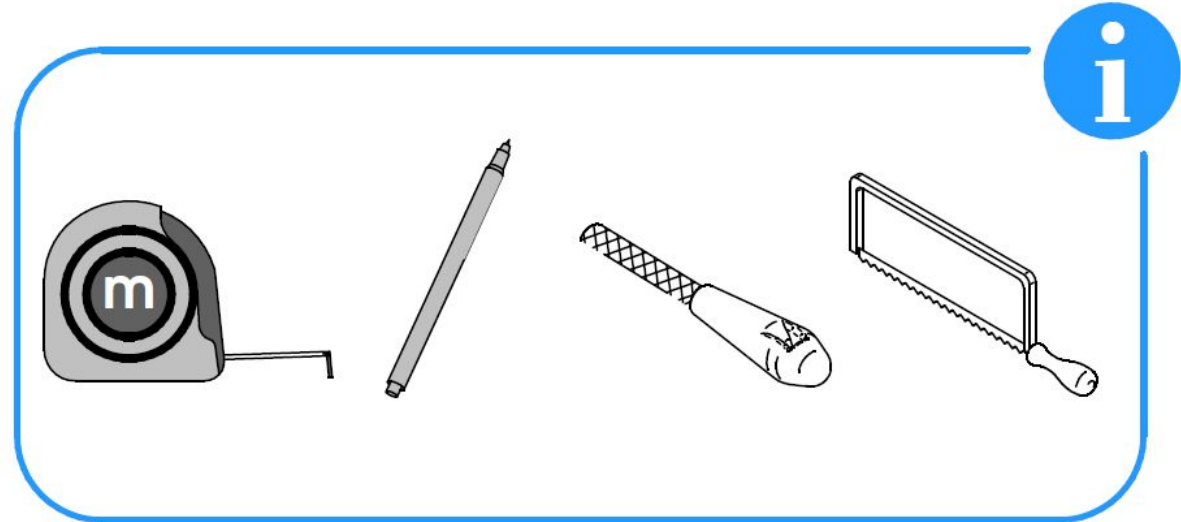
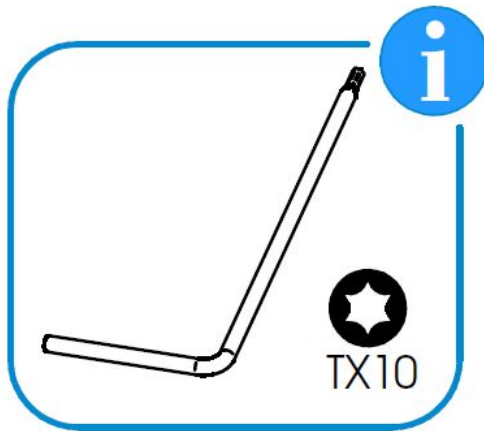
MEDIDA
EUROPEA



INTRODUCTION

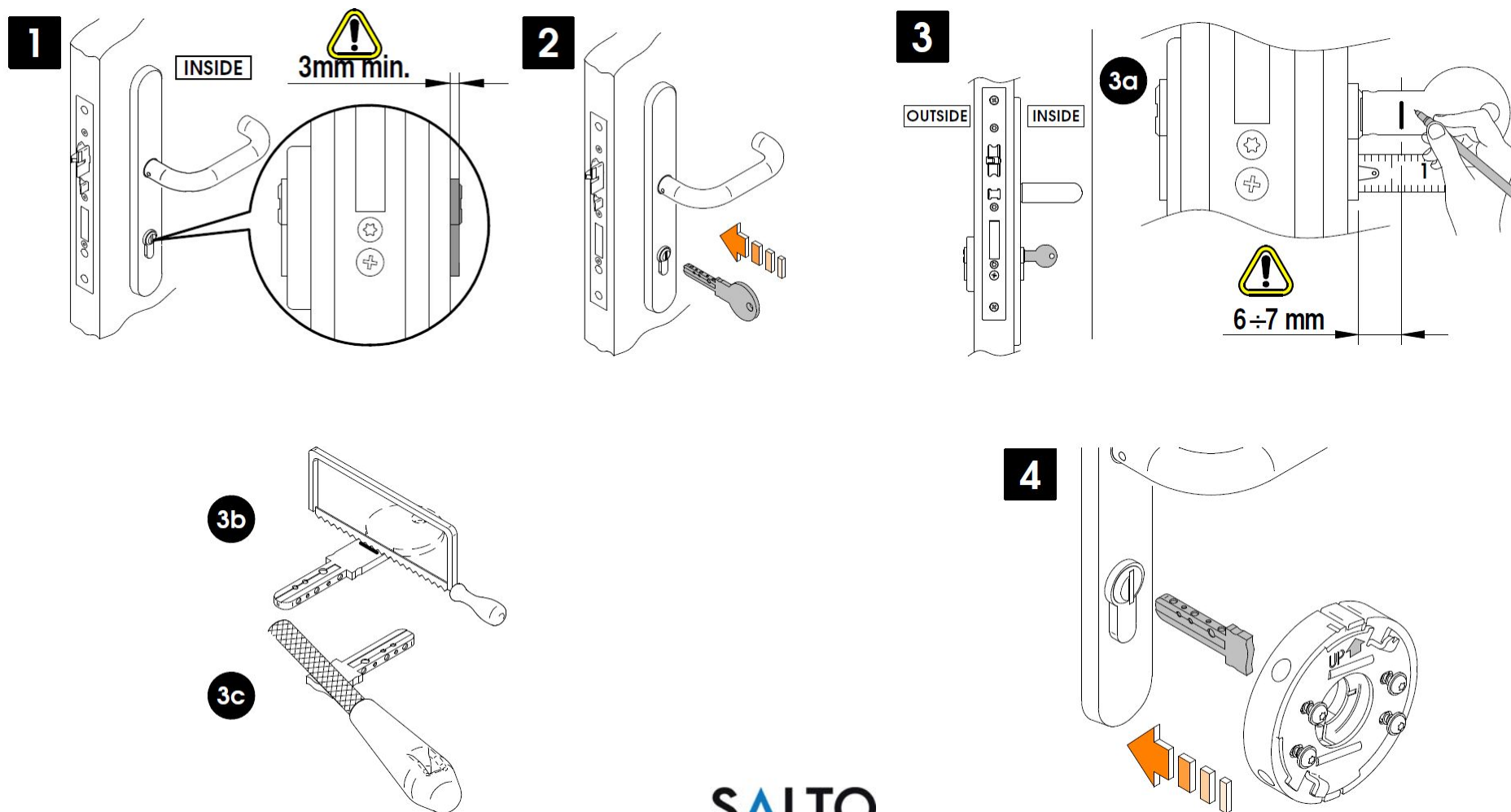
Key Turner Installation

Necessary Tools:



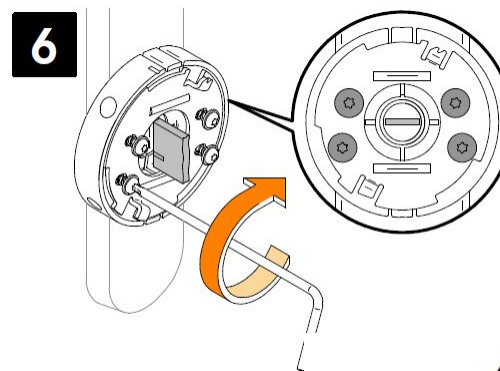
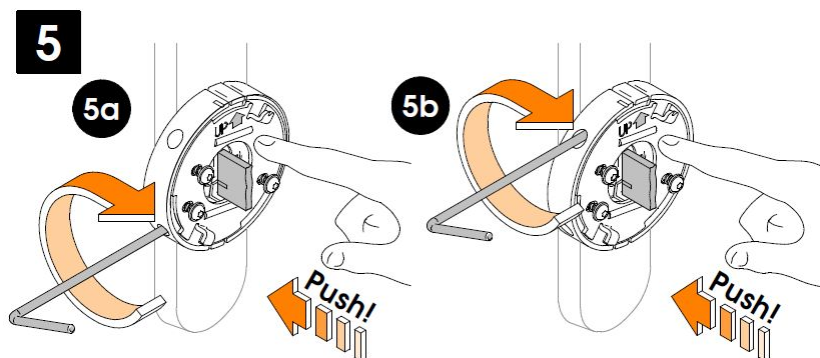
INTRODUCTION

Key Turner Installation

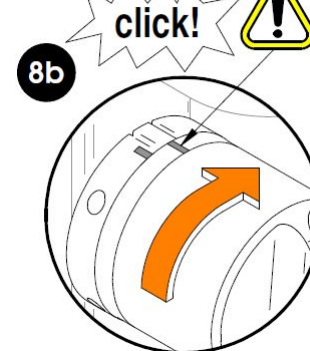
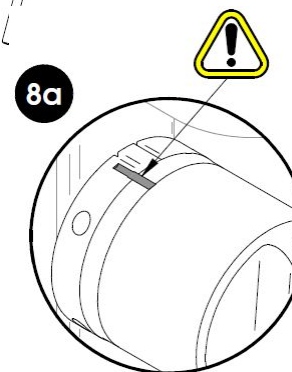
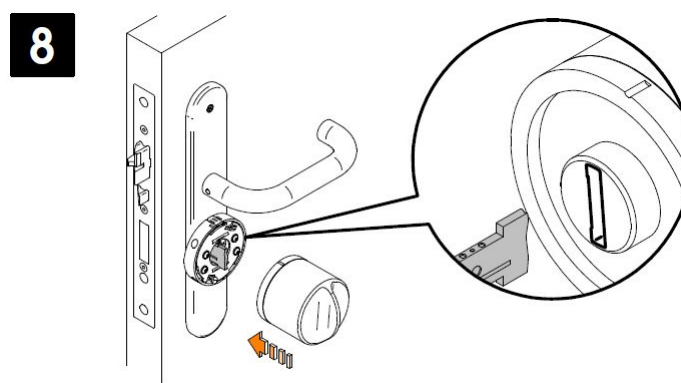
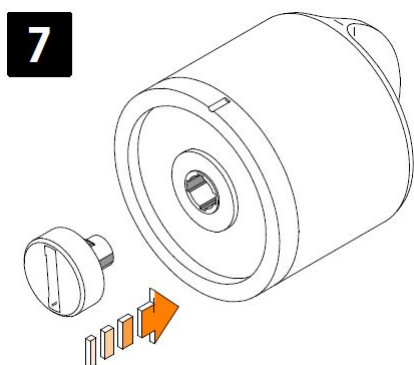


INTRODUCTION

Key Turner Installation



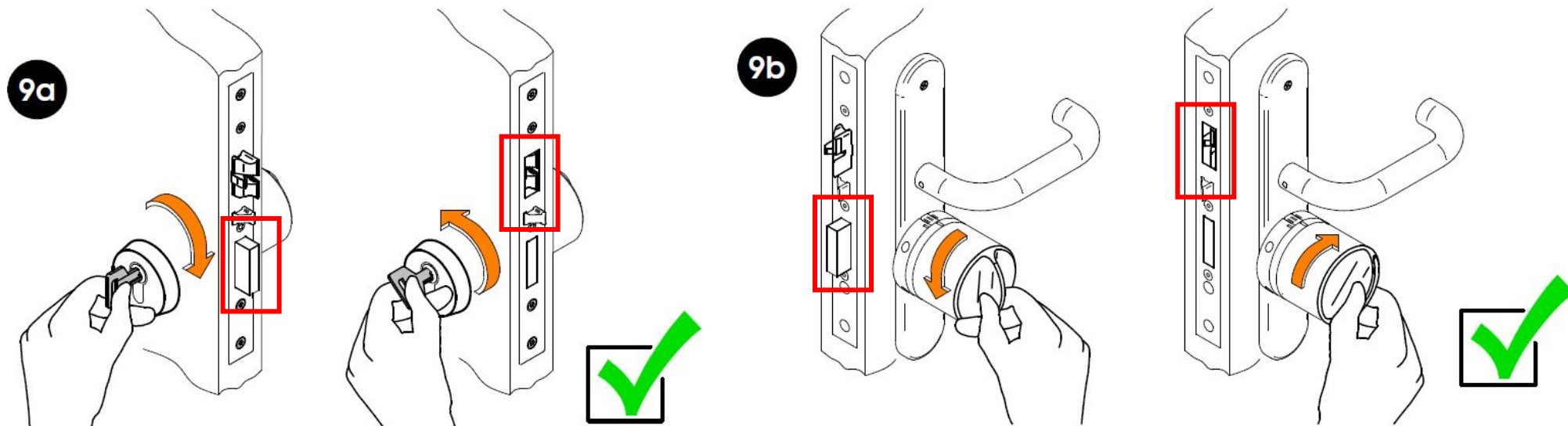
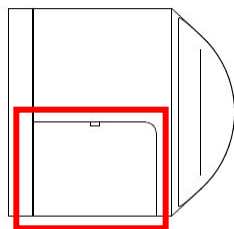
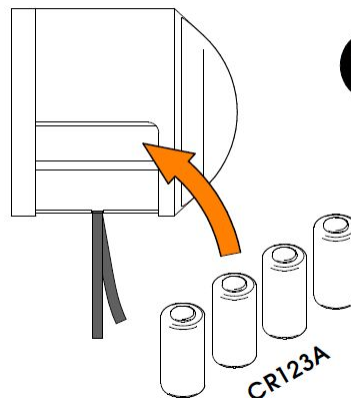
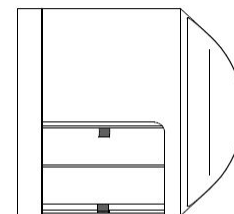
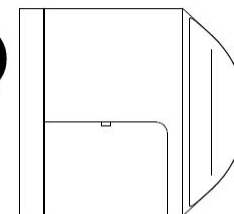
5 and 6 fixing Torx 10 screws from key Turner over the cylinder



Push button and turn to remove DANALOCK from key Turner.

INTRODUCTION

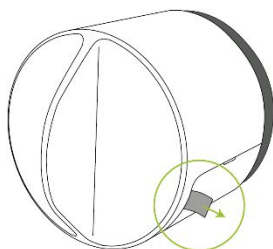
Key Turner Test

**10****10a****10b****10c****10d**

INTRODUCTION

Batteries Installation

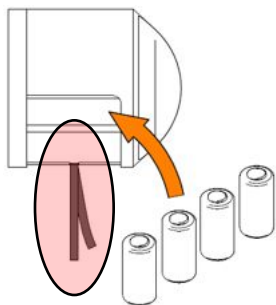
Remove the isolating from the battery:



Danalock uses lithium batteries CR123A type:



Introduce the batteries, removing the isolating pay attention in not getting outside the isolating



Recommended brands:
✓Panasonic CR123A
✓Duracell 123

Verify The position and batteries placement

***9000 openings battery life**

INTRODUCTION

Danalock APP

Ready for ios and Android

Minimum versions:

- ✓ **Android v5.0 – Recommended: v6.1**
- ✓ **iOS v9.0**

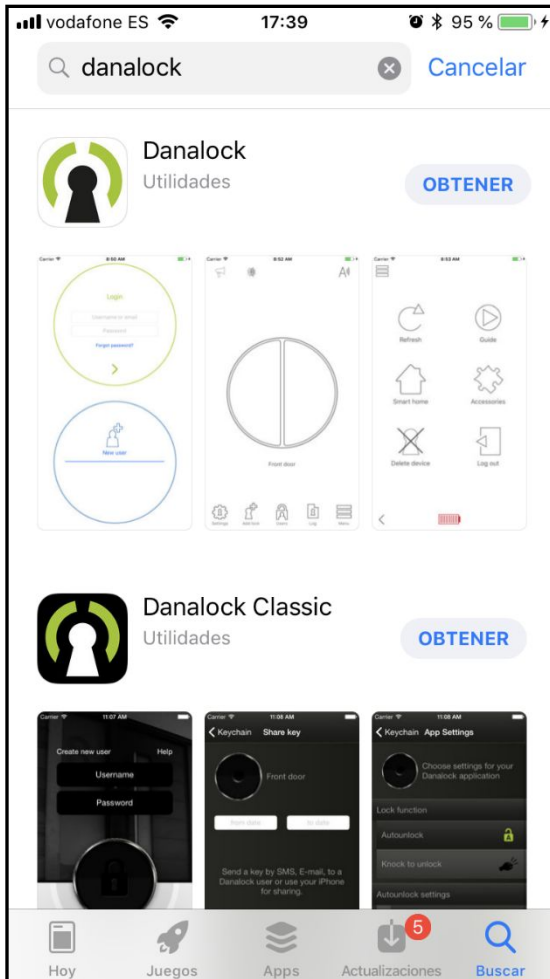
Functions:

- ✓ **Lock settings**
- ✓ **User administration**
- ✓ **Auditor events**

Registre and start using!



Download DANALOCK App



From App Store for iOS



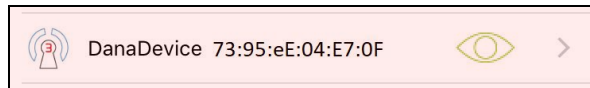
From Google
Play for Android





Steps to follow

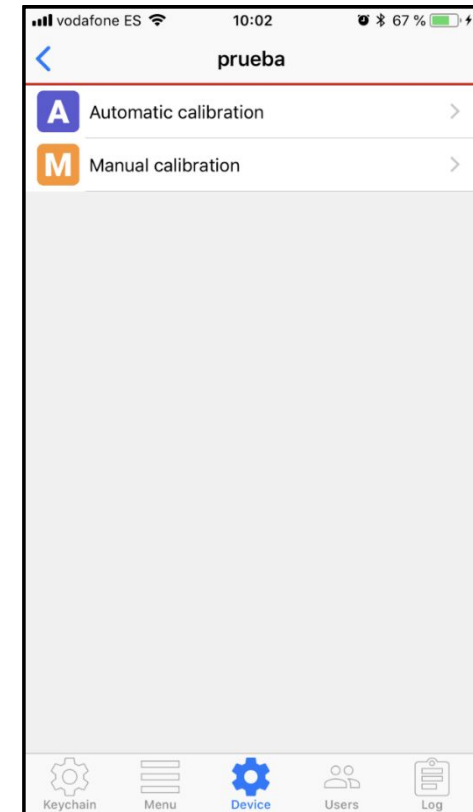
1. **Download App, iOS - Android.**
 1. **With a valid email register in the app.**
 1. **Username y Password**
2. **Find the door**
 1. **The code from the app must be the same with the MAC which is unders BIDI from battery holder.**
3. **Give a name to the door**
 1. **Door Name**
4. **Lock Setup**
5. **Door calibration**
 1. **Automatic mode calibration**
6. **Lock/Unlock Test**



Not mix covers



Verify that the initialised device is the same in the cover and in the APP



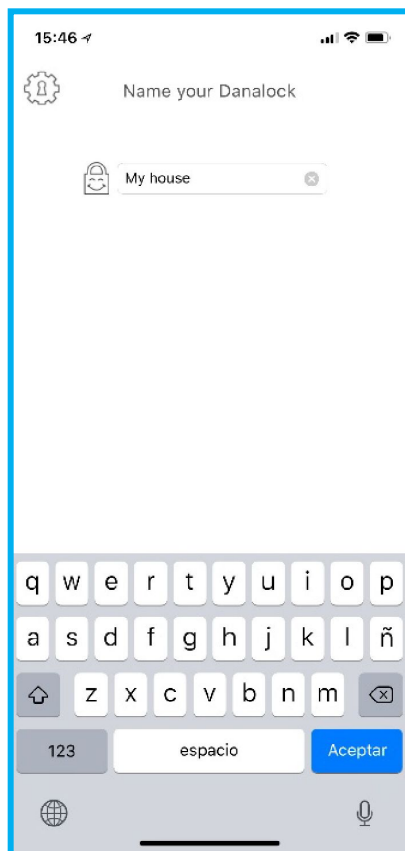
**Bluetooth in the phone
Must be enabled**



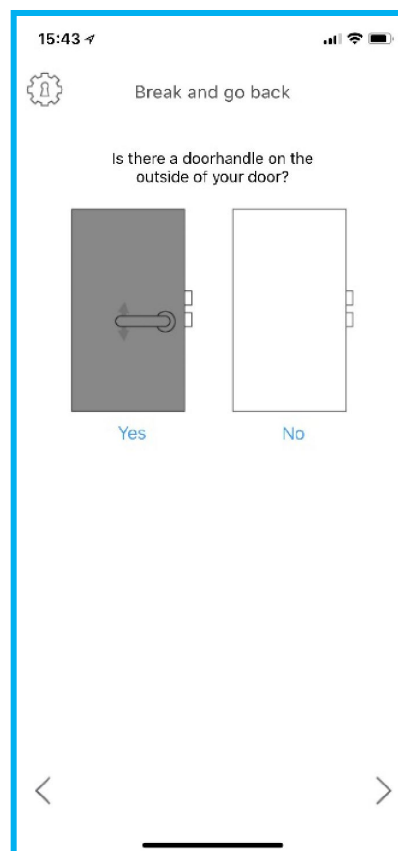


INTRODUCTION

Create the door

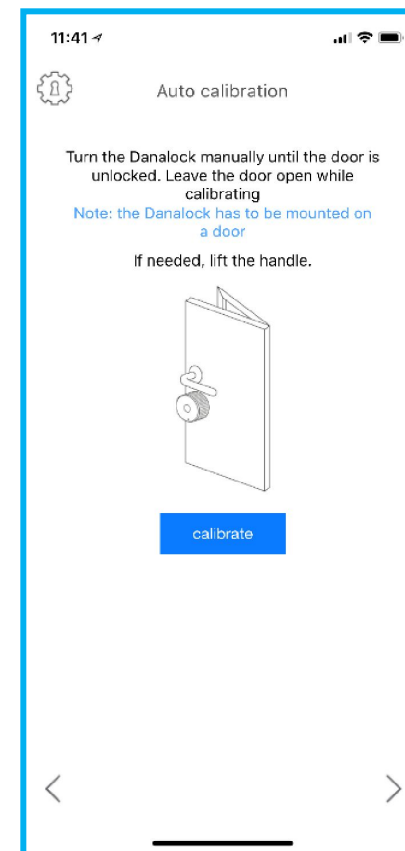


Type a name for the door



Choose the type of door

SALTO
inspiredaccess



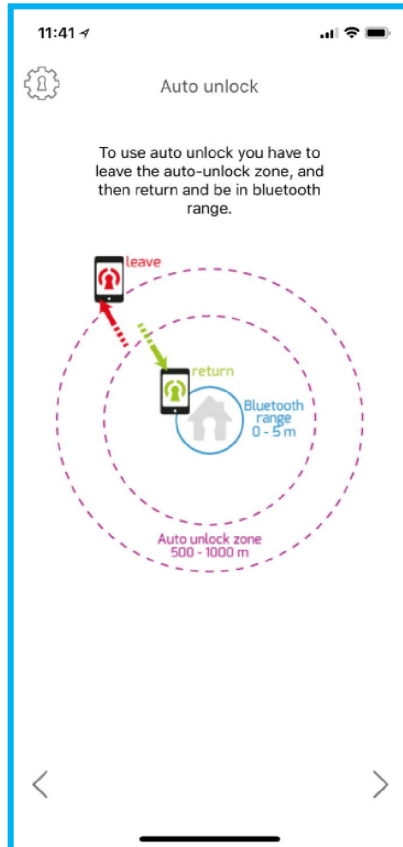
Calibrate the door

***Pay attention with antipanic doors!**

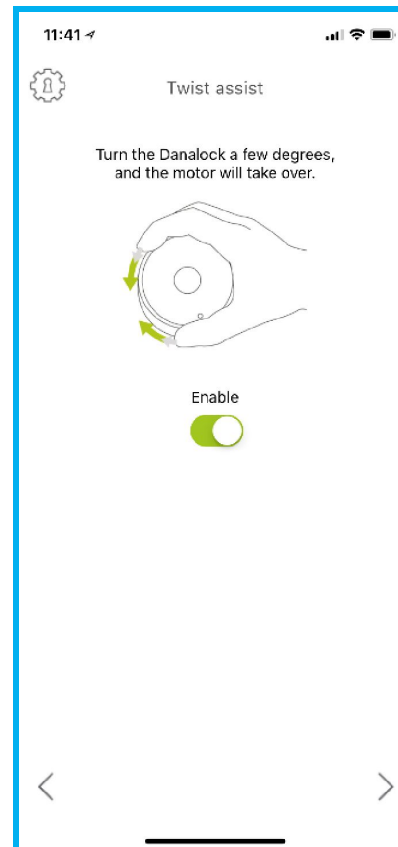


INTRODUCTION

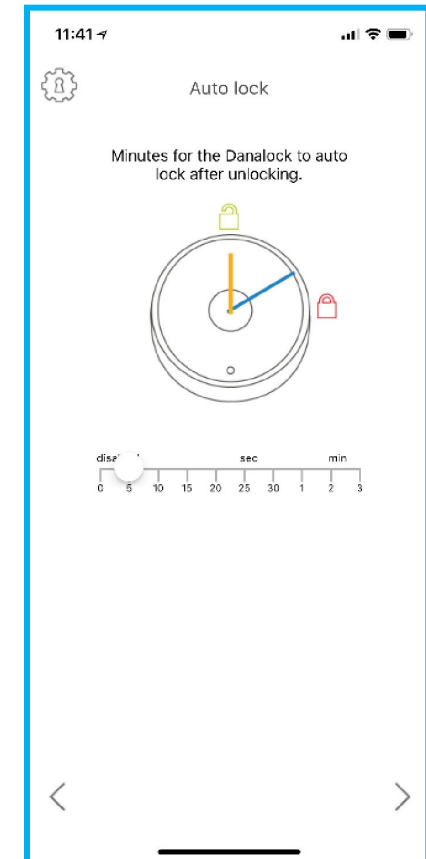
Setup the door



Auto unlock



Twist assist



Auto lock

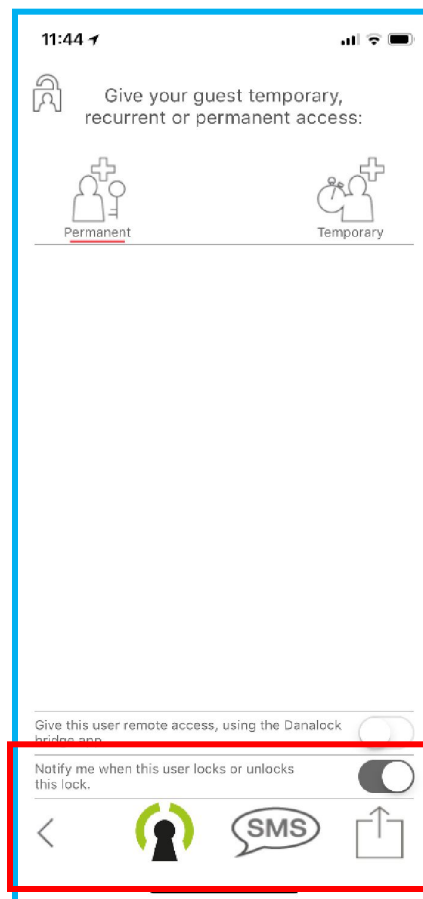


INTRODUCTION

Invite a Guest



Choose the type of user



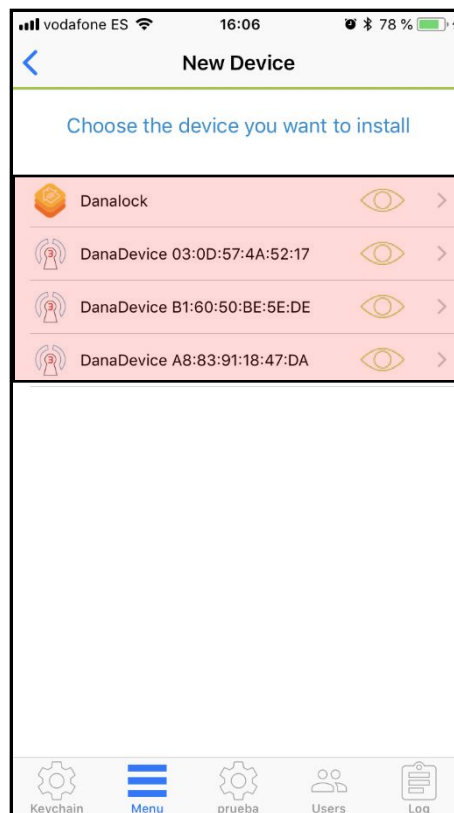
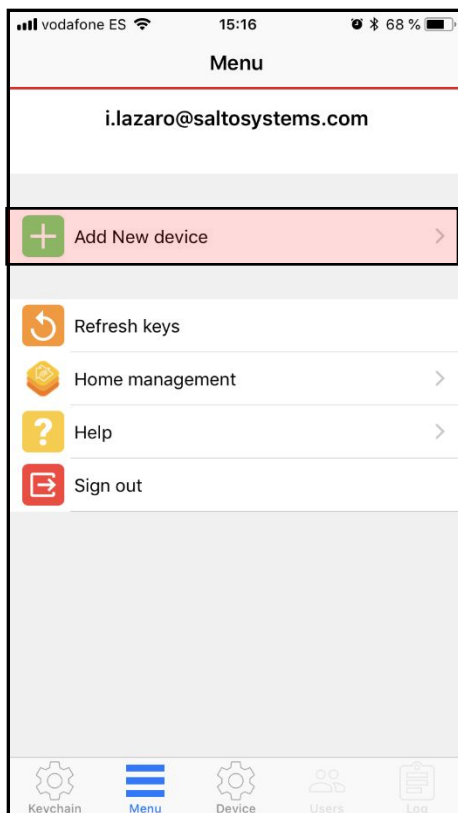
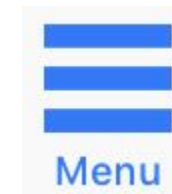
Invite a Guest



Fix a timetable



MENU iOS Screen: Add a door

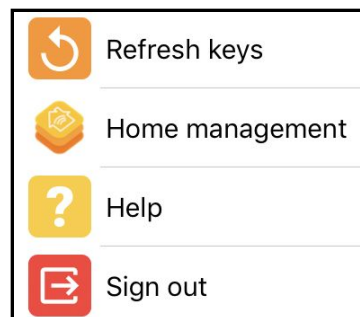
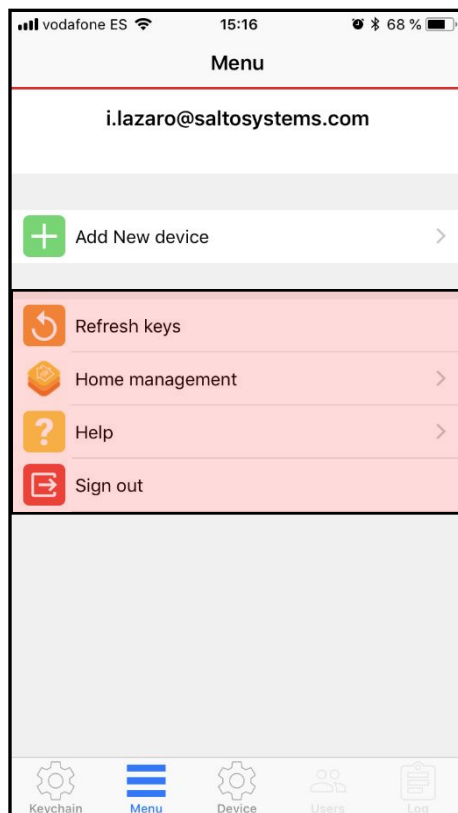
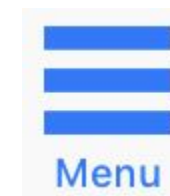


Clicking in Add New Device DANALOCK in the range appears. Enabled the Bluetooth, máximo distance is 5 meters. We chose the lock to initialise inicializar and then belongs to the system





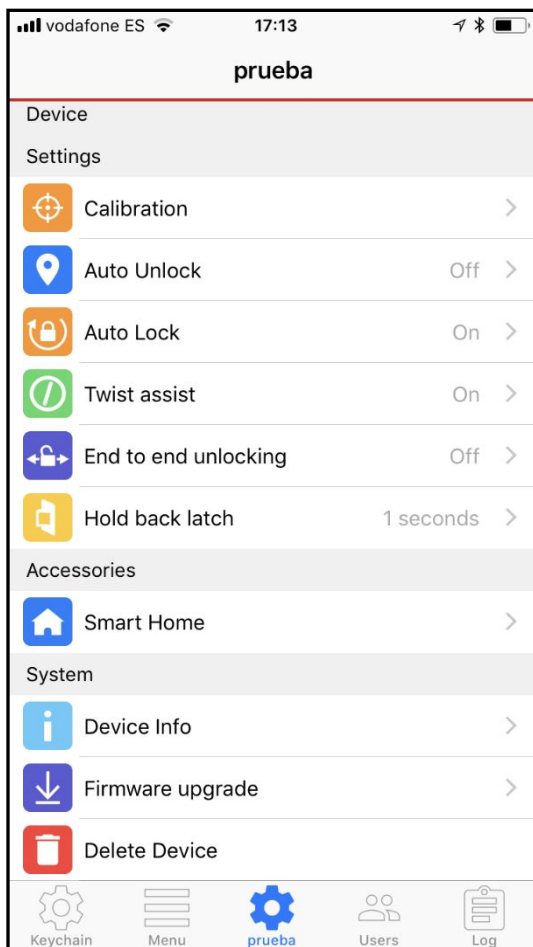
MENU screen



Refresh keys
Home management
Help
Sign Out



Door Setup Screen



Name: Name of the device(PRUEBA)

Battery:DANALOCK BATTERY status

Calibration: DANALOCK calibration

Auto Unlock: DANALOCK automáticamente unblocks coming back home

Auto Lock: Latch projeciton time after an opening (1-180 sg.)

Twist assist: Just turning the DANALOCK the motor operated for you (opening/close)

End to end unlocking: Always Off

Hold back latch: Latch automatic retracts time

Smart Home: No ready

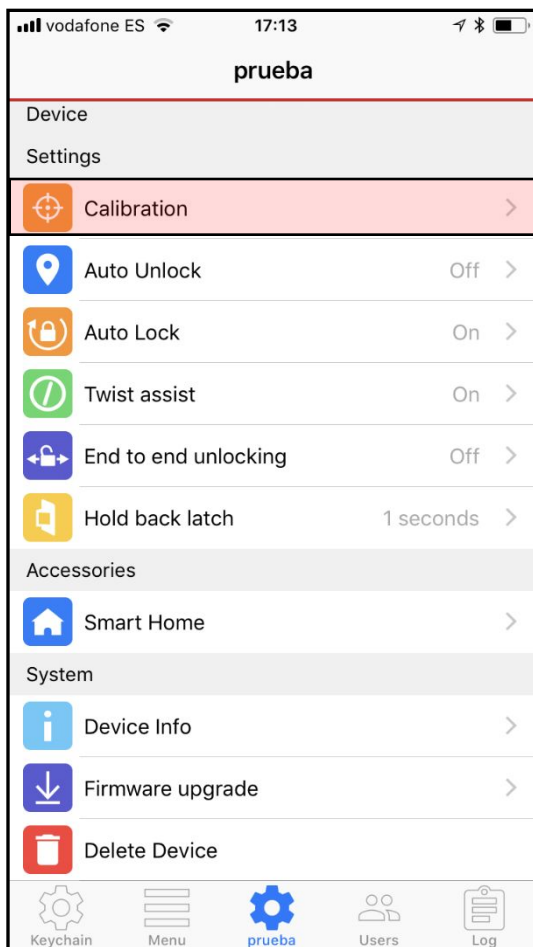
Device info: Device information

Firmware upgrade: Opción to DANALOCK

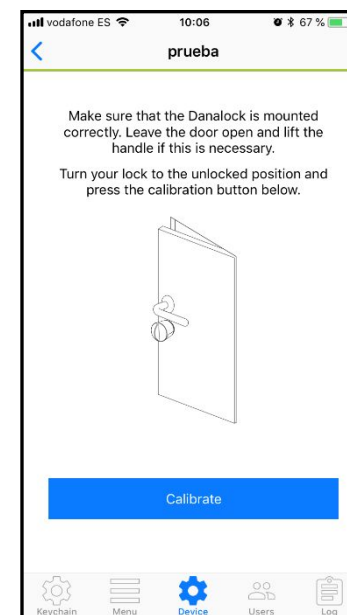
Delete Device: Free DANALOCK from your phone and system



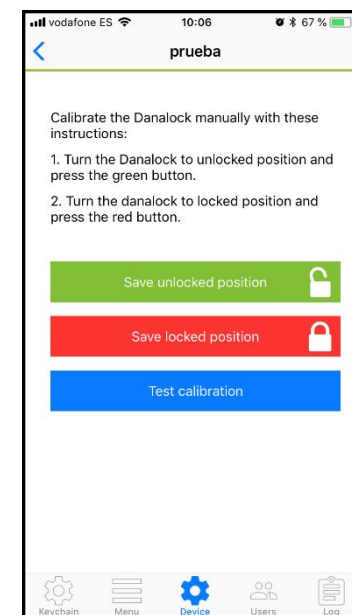
Door Screen Setup: Calibration



Automatic calibration

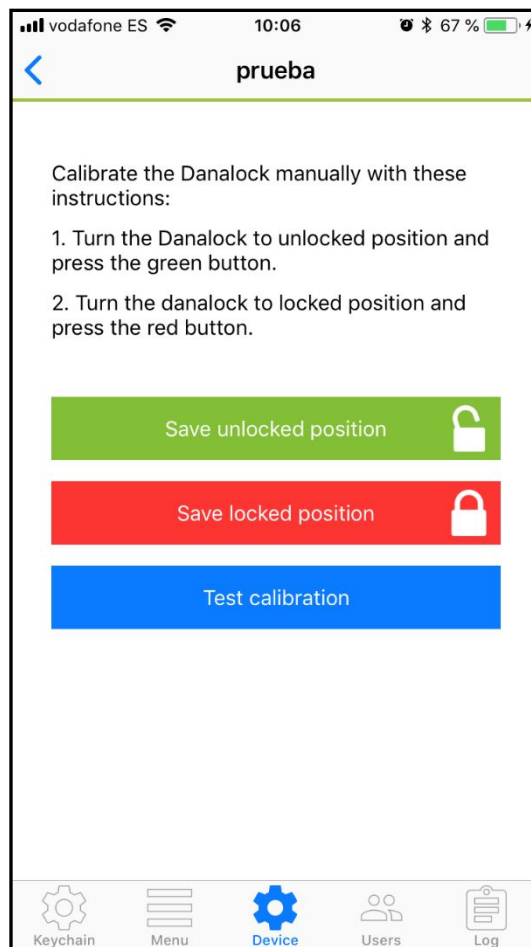
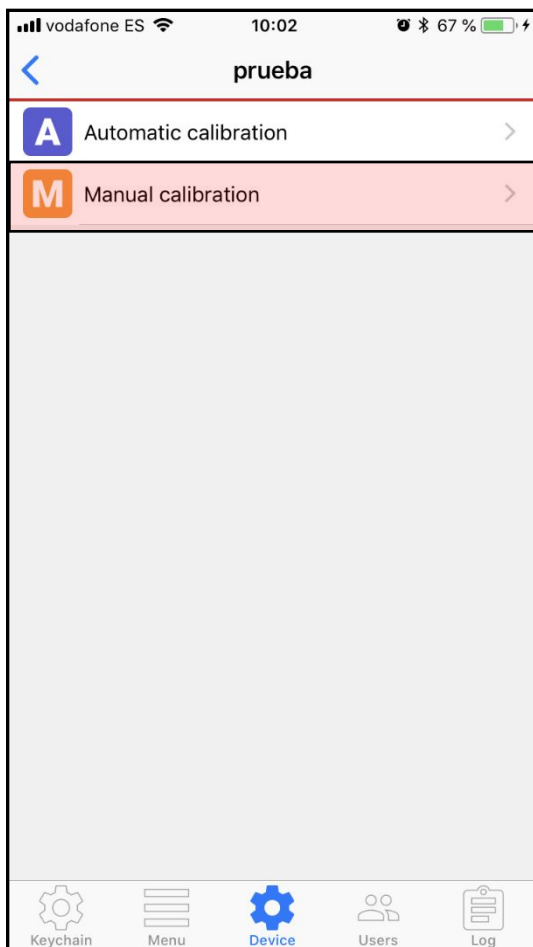


Manual Calibration





Door Screen Setup: Calibration



Manual calibration



Save unlocked position

DANALOCK is placed in the unlocking position at all in the latch and you push in the Green button

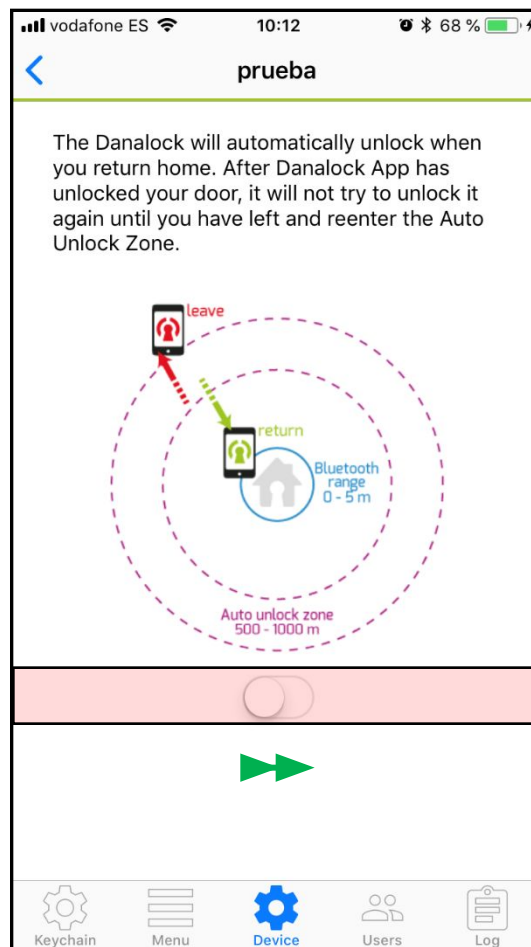
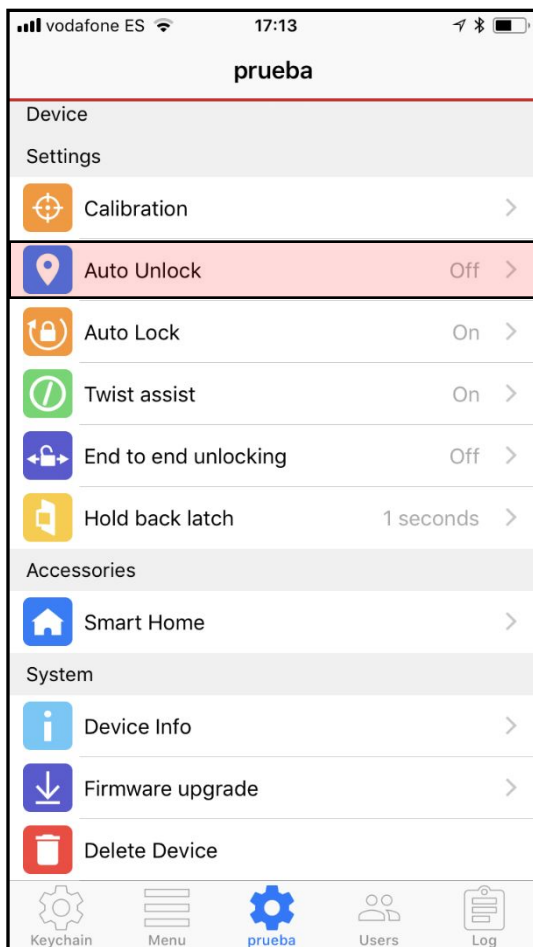


Save locked position

DANALOCK is placed before retracting the latch and then push red button



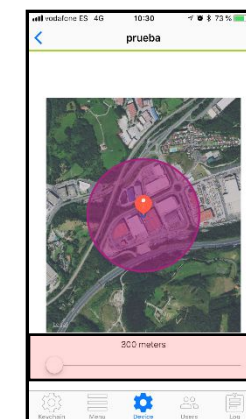
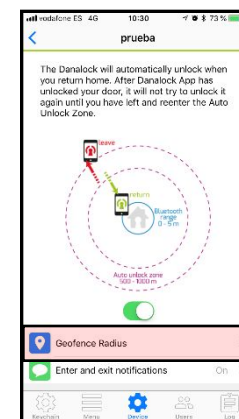
Door Setup Screen: Auto Unlock



AUTO UNLOCK

When you come back to home the Danalock is unblocked automatically

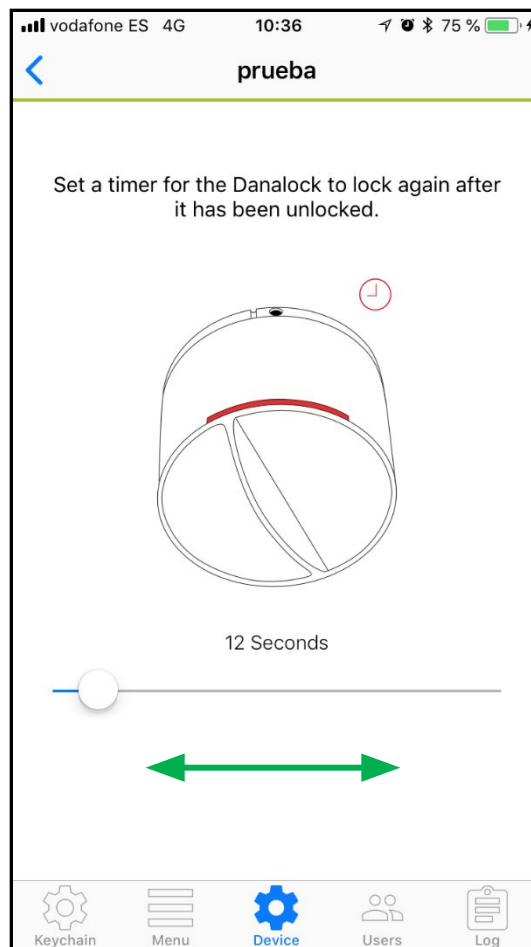
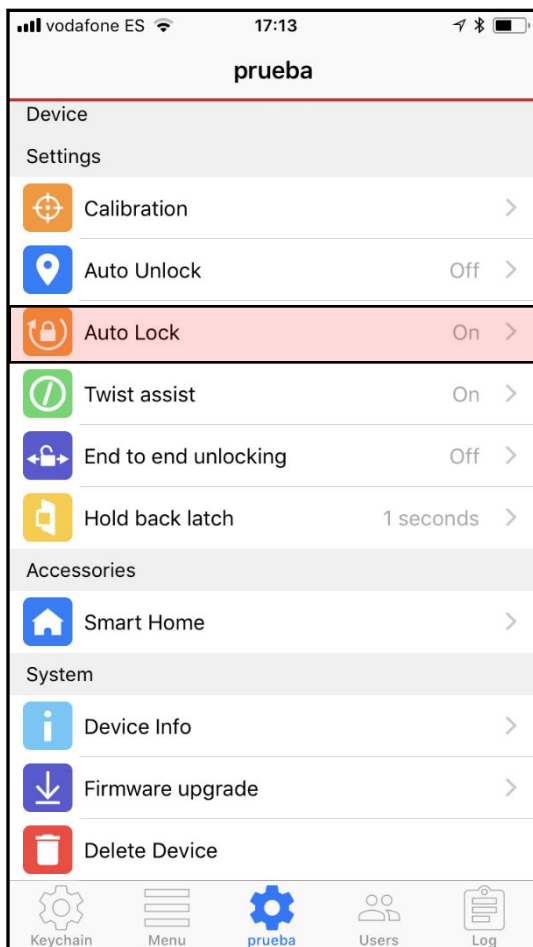
Once the door is unblocked the system will try to unblock the door until you do not move away from the door



To enable the unblocking zone the mobile must have the GPS activated.



Door Screen Setup: Auto Lock

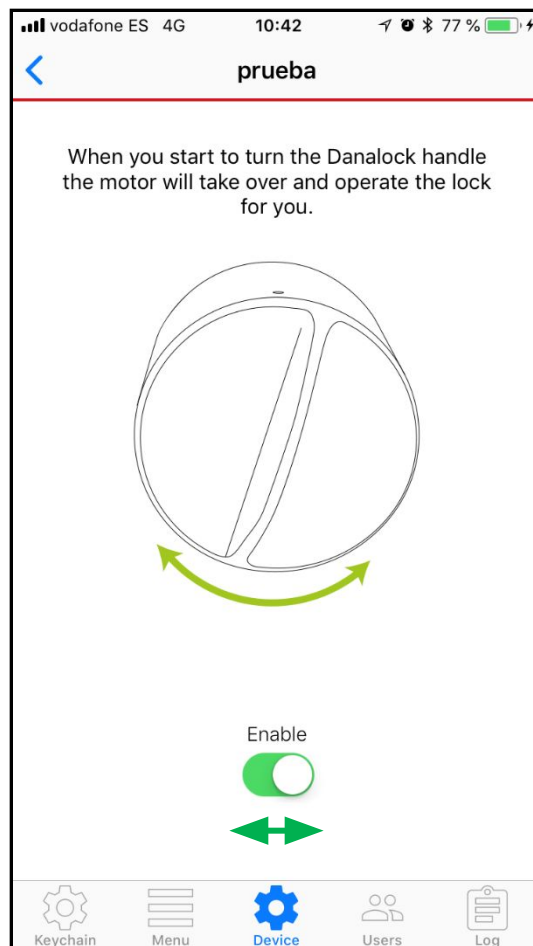
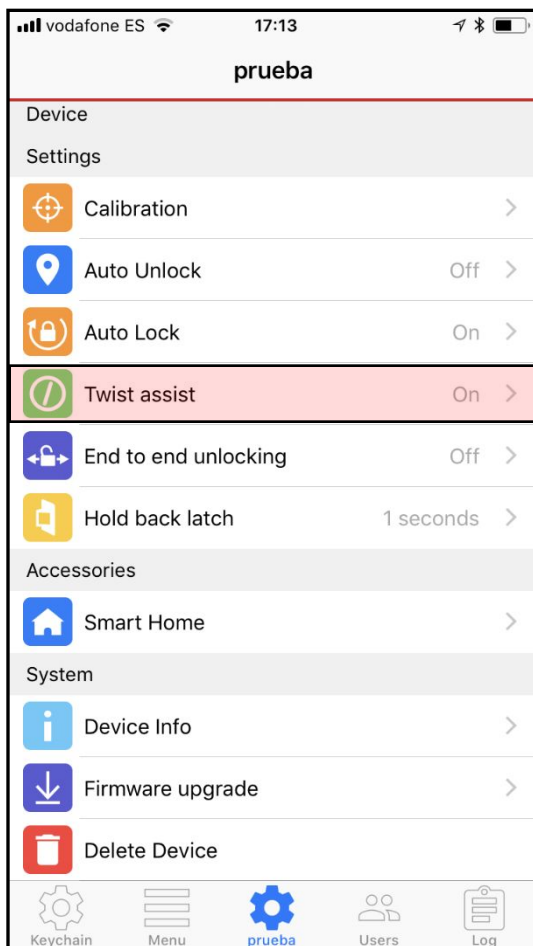


SELF LOCKING

Define the time(1 – 180 seconds) in order that the system unlocks wutomatically the lock automatically



Door Screen Setup: Twist Assist

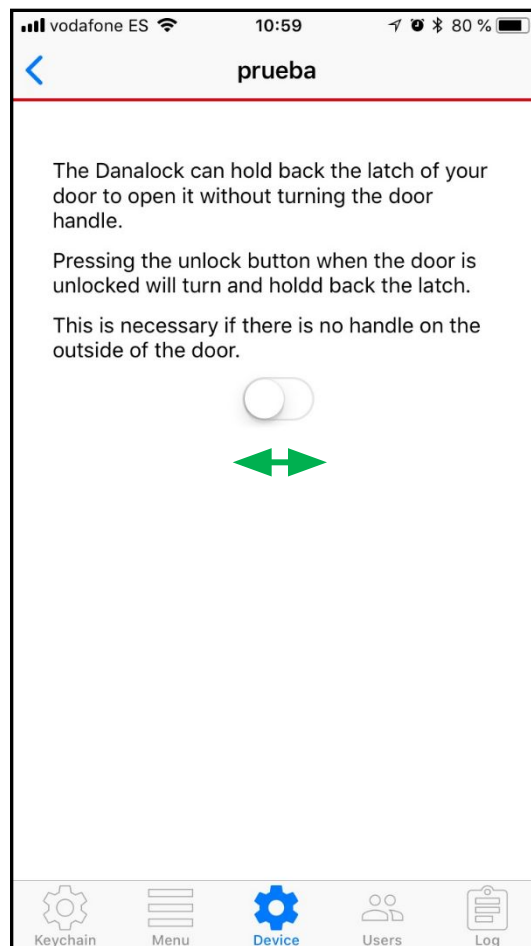
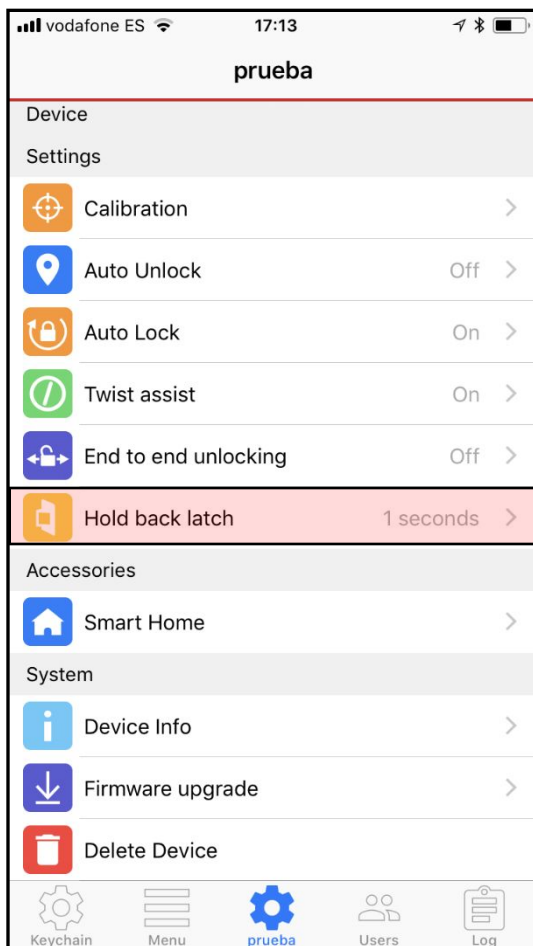


HELP TO TURN

enabling the option when you start to turn the DANALOCK the system will take the control and the motor will make the operation

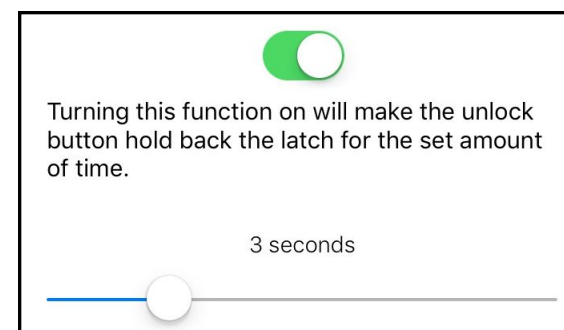


Door Screen Setup: Hold back latch



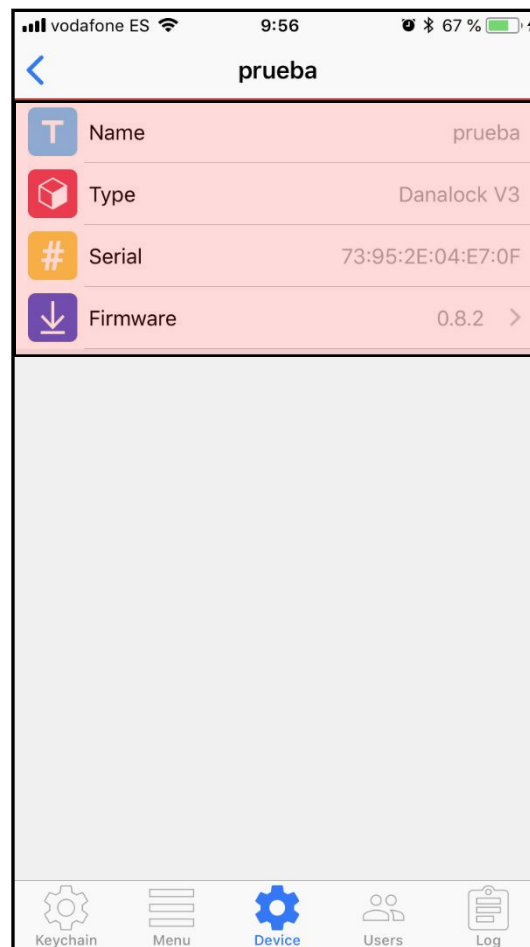
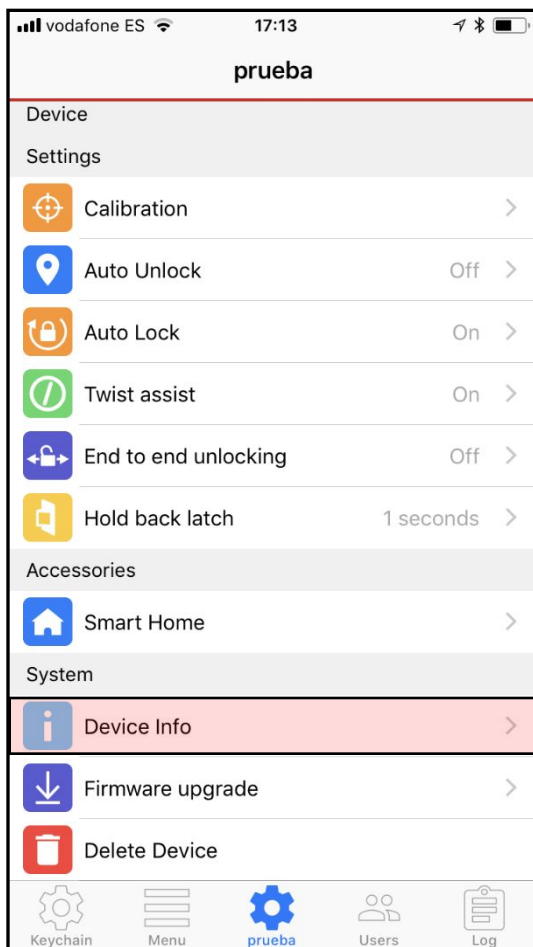
KEEP LATCH

The mechanical latch keeps hold inside the door for several seconds.(between 1-15 seconds)





Door Screen Setup: Device Info

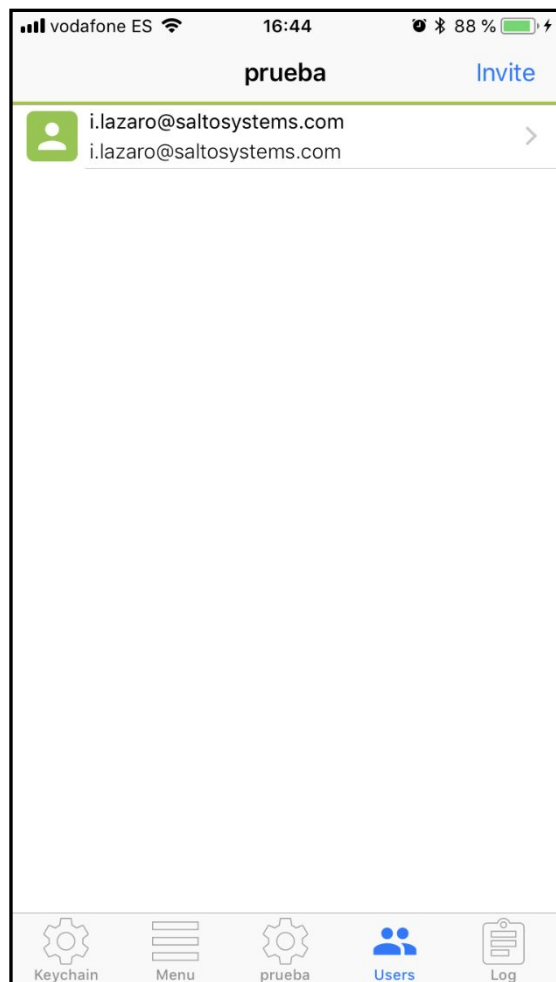
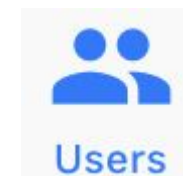


Battery holder with serial number





User Screen

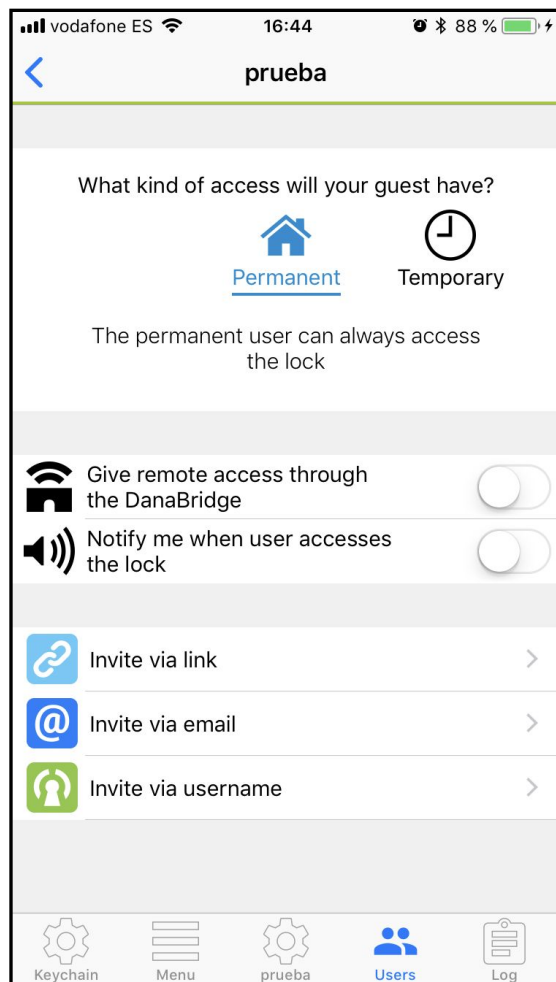


It will appear in the screen the user added in the door

In the same way is possible to invite other users to open the door

A guest is not able to make a setting of the Danalock





Users Screen: Invitation

2 type of access

Permanent: always

Temporary: specific time

Remote Activation

Notification alarm when a guest access to a door

Different options to invite

Through link: mensaje, mail..

For example:

Example:

User@saltosystems.com

Through Name:

Example:

















Registro_danalock@saltosystems.com





Audit Trail

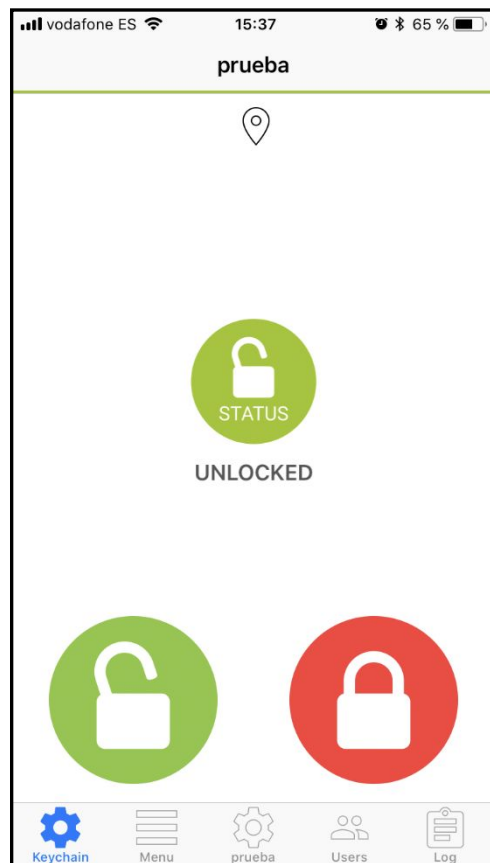


vodafone ES 17:35 95 %		
prueba		
Today		
	i.lazaro@saltosystems.com	15.11
	i.lazaro@saltosystems.com	08.40
	i.lazaro@saltosystems.com	08.40
	i.lazaro@saltosystems.com	08.40
Yesterday		
	i.lazaro@saltosystems.com	23 jul 17:32
	i.lazaro@saltosystems.com	23 jul 17:10
	i.lazaro@saltosystems.com	23 jul 17:10
	i.lazaro@saltosystems.com	23 jul 17:09
	i.lazaro@saltosystems.com	23 jul 17:09
	i.lazaro@saltosystems.com	23 jul 17:09
	i.lazaro@saltosystems.com	23 jul 17:08
	Keychain	
	Menu	
	prueba	
	Users	
	Log	

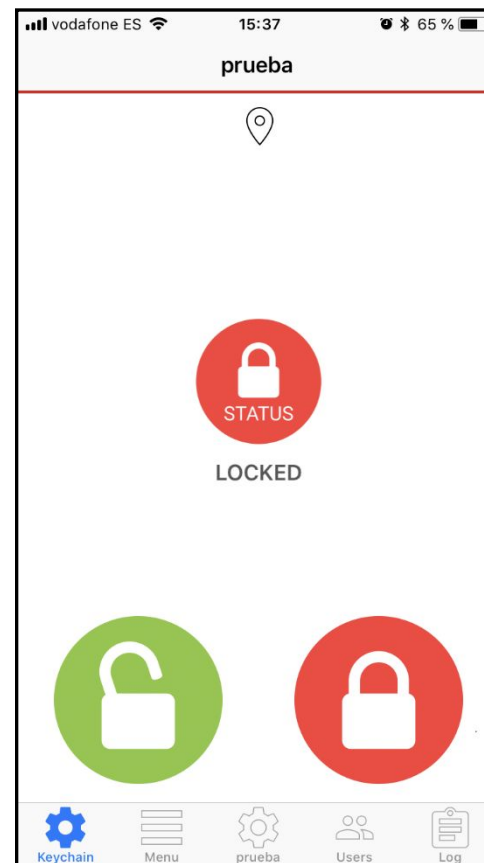
Audit trails of Prueba lock showing when the lock was user



KEYCHAIN main screen



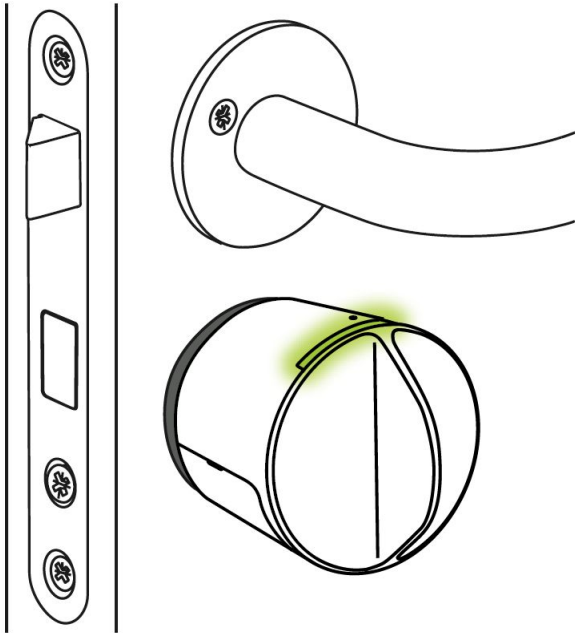
Apertura

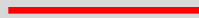
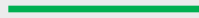
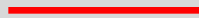
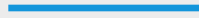


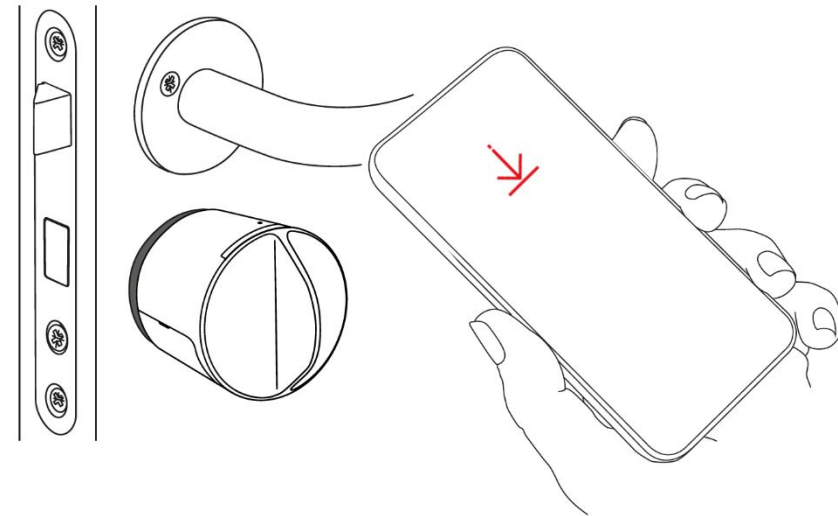
Cierre

INTRODUCTION

LED indications



LED SCREEN	RED COLOR	EXPLANATION
Continuos red		Success blocking
Continuos green		Unblocking success
3 seconds White LED		Connection.Batteries enabled
Red flash every 5 minutes		Low battery
Continuos Blue		Firmware Update



With a red arrow is shown the firmware upgrade in the APP. Choose the arrow in the app and the firmware is updated through Bluetooth.



SALTO
inspired**access**

THANKS!

SALTO Systems HQ, Spain
Polígono Lanbarren - C/ Arkotz, 9
20180 Oiartzun, Spain

T: +34 943 344 550
www.saltosystems.com

SALTO
inspired**access**